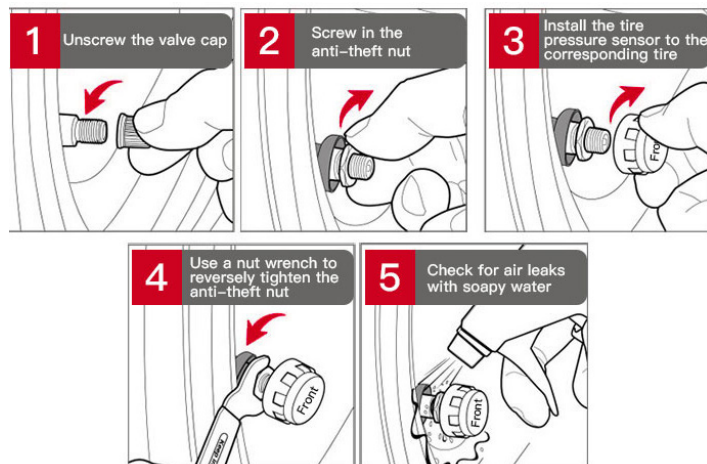


Tire Pressure Installation And Function Introduction


1. Install the Tire Pressure Sensor

Open the Bag 11 tire pressure installation kit and take out the **Anti-theft Nuts**. Install the **Anti-theft Nuts** at the inflation ports of both the front and rear wheels. Install the Tire Pressure Sensors on the wheels of the front and rear wheels respectively. Use a **Nut Wrench** to tighten the anti-theft nuts counterclockwise.

Start the motorcycle and wait a few minutes for the tire pressure and temperature data to be displayed normally.

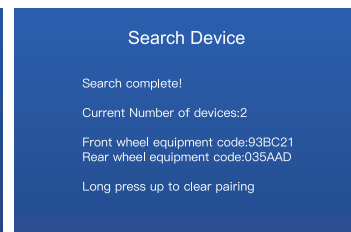
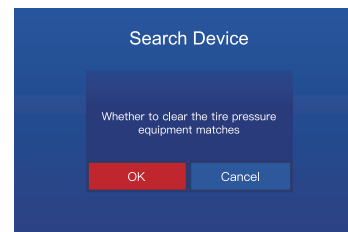
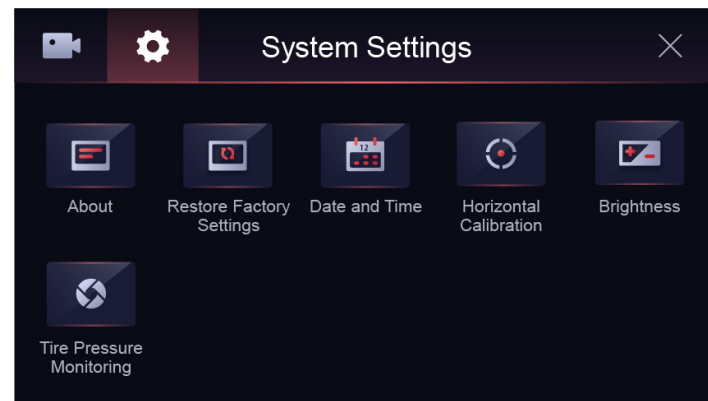


2. Tire Pressure Equipment Matching Function

Each host will match the tire pressure before leaving the factory. If user needs to re-pair, user needs to set it in the "Tire Pressure Device Matching" interface: press and hold the **"Up Key"**  and a prompt box will pop up, prompting "Whether to clear the tire pressure device matching ", click OK.

Quickly re-match Tire Pressure Method

open the cover on the tire pressure sensor and remove the button battery. Then, enter the "Tire Pressure Device Matching" interface on the host, wait for one minute, and insert the battery into the tire pressure sensor. The front/rear device number will appear, indicating that the pairing is successful.



1. App Introduction

The video recorded by the dash-cam is saved in the TF card. Customers can use the App to download the video from the TF card to the mobile phone, which is convenient for editing and sharing the video.

Deepmoto's dash-cam has different models and functions, but there is only one corresponding app, that is, the app is universal for all models.

The app has a mainland China version and an international version. The app name of the mainland China version is "**Deepmoto**", and the app name of the international version is "**Philo Deepmoto**". No matter whether you download the mainland version or the international version, the functions of the app are the same.

2. App Installation Method

► **There are two ways to install the app in mainland China.**

(1) Search for "Deepmoto" in any application store of the mobile phone, find the application, download and install it.

(2) Download and install by scanning the QR code.



► **There are two ways to install the international version of the App.**

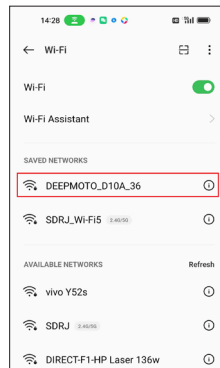
(1) Search for "Philo Deepmoto" in the Google Play application store, find the application, download and install it. It should be noted that the mobile phone must first install the Google Play application store.

(2) Download and install by scanning the QR code.



3. App WiFi Connection

After the dash-cam is turned on, search for the signal named "Deepmoto_XXXX_XX" in the WiFi signal of the mobile phone and connect it. Enter the password "12345678". After the connection is completed, return to the App interface, and the name of the connected WiFi will be displayed at the bottom of the interface. The WiFi signal of the example diagram is version D10A.



Note:

When connecting to WiFi for the first time, a security prompt box will pop up, please click to "Decline", otherwise the connection will fail and the App will not be available. If the connection fails due to wrong click, please try to restart the dash-cam and restart the WiFi.

The Wi-Fi network "DEEPMOTO_D10A_36" is not connected to the Internet. Allow Wi-Fi Assistant to switch you to a better Wi-Fi network?

Decline

Allow

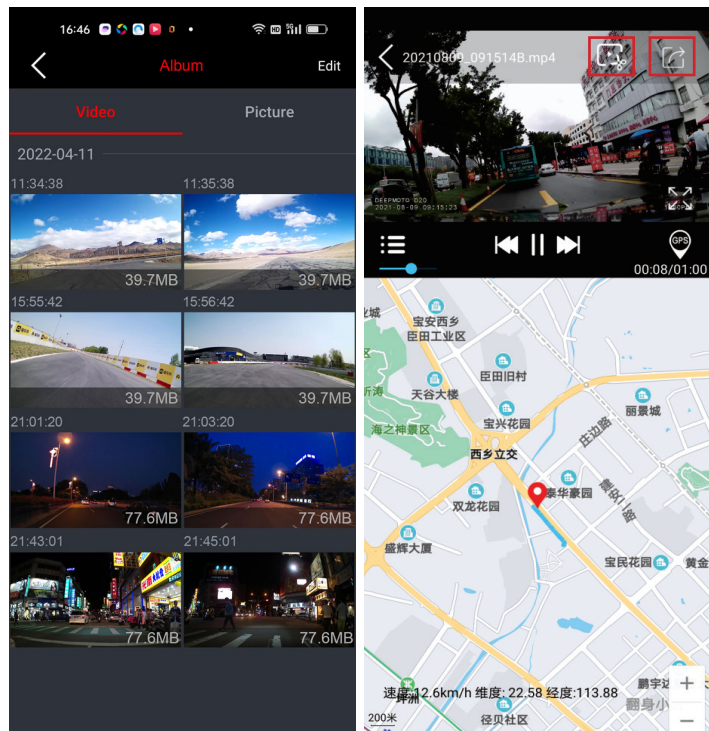
The "+" sign in the upper right corner of the App interface is also used to connect to WiFi. It will list the product model of Deepmoto. Click the button below the product model interface, the page will jump to the WiFi signal page of mobile phone. It might to wait 3 to 5 seconds because the slow system responding. It is recommended to connect directly on the mobile phone WiFi signal page.

4. App Function Introduction

4.1 Album

Click the album in the lower left corner to view the videos and pictures downloaded from the TF card, and click edit in the upper right corner to edit and share the videos and pictures.

Click on the GPS to see the map and driving track. The Chinese interface uses Baidu Maps, and the English interface uses Google Maps. Please pay attention to the usage environment.

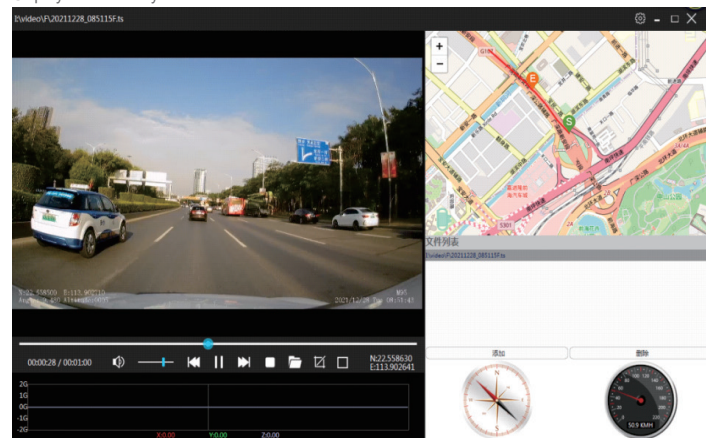


The downloaded video format is TS. If you want to view the recorded video and driving track on the computer, you need the corresponding playback software, here recommends GXplayer.




Download address: <http://www.sunningsoft.com/en/pcgps.html>

Customers can also use other video playback software to play.

GXplayer Video Play:

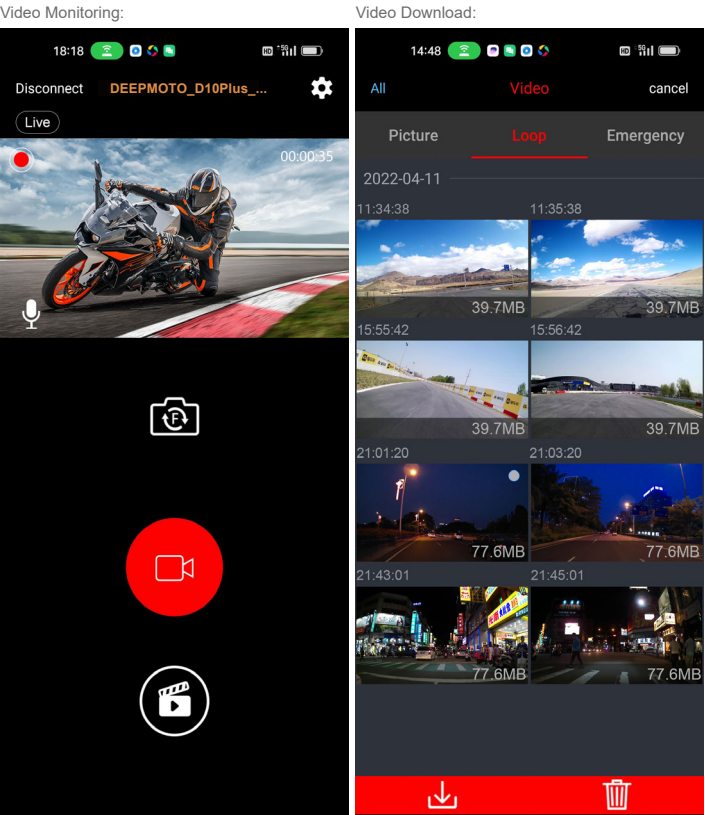


4.2 Video Monitoring


- ▶ Click the WiFi name to enter the real-time video monitoring interface. The flashing red light in the upper left corner of the video indicates that the camera is recording.
- ▶ Click the camera button  to switch the recording screen of the front camera/rear camera.
- ▶ Click the recording button  in the middle to stop/start recording.
- ▶ Click the video file list button  to view the pictures and videos saved in the TF card.
- ▶ Click "Disconnect" in the upper left corner to log out of the link.

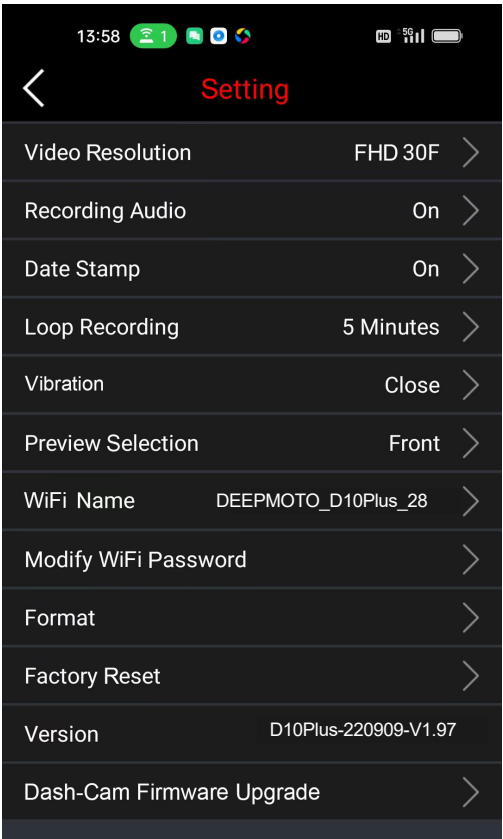
4.3 Video Download

Enter the video file list to view the pictures saved in the TF card, loop videos and emergency videos (Locked Videos), click "Select" in the upper right corner to choose the desired videos and pictures to download or delete.



4.4 Setting

In the video monitoring interface, click the setting  in the upper right corner to enter the setting interface. WiFi password can be modified in this interface. Other functions are relatively simple and will not be described again.



5. System Upgrade

There are two types of system upgrades, one is dash-cam host firmware upgrade, and the other is App software upgrade.

Host Firmware Upgrade

It is mainly to upgrade the software system and operation of the dash-cam host. Click "Host Firmware Upgrade" under the setting interface, and the host will enter the firmware upgrade state. During the upgrade process, the power cannot be cut off. Power failure may cause the host program to crash and cannot be turned on.


App Software Upgrade

It is mainly to upgrade the App application software interface and functions. To upgrade the App software, customers need to update or reinstall the App in the App Store.


Precautions:

- ▶ Before the firmware upgrade, it is recommended to format the TF card once, and after the upgrade is completed, format it again.
- ▶ For App software, it will not affect the use if it is not upgraded.


► Dash-cam Host-related Issues

 After the motorcycle is started, the dash-cam does not turn on / the dash-cam always displays the logo and cannot be turned on normally.

- a. Check whether the line connection is normal, and rule out whether the ACC contact is loose.
- b. If there is no problem with the ACC contact, check whether the position of the power cord connector is tightly inserted.
- c. Pull out the power cable and check whether there is water in the connector.
- d. If there is no problem, it may be that the power cord is abnormal and needs to be replaced.

 Abnormal phenomena such as crash occurred in the dash-cam.

Long press the power button to shut down and restart the dash-cam.

 The button function of the dash-cam is abnormal / the button function automatically jumps / the button has no effect.

- a. Pull out the wire control of the driving recorder, and observe whether the phenomenon of abnormal button function disappears.
- b. Check whether there is water at the position of the remote control connector, if there is water, wipe it dry.
- c. If there is no water, it is the remote control problem, and the remote control needs to be replaced.
- d. If it is still not normal after replacing the wire control, it is most likely that the host is faulty and needs to be replaced.

 TF card does not recognize.

Insert another TF card and try it. If there is no problem with the TF card, it is the problem of the host, and the host needs to be replaced.

? No GPS signal detected.

Check whether the GPS connection is normal, and there should be no interference around the GPS. Drive the motorcycle outside and check again.

? The HUD interface shows that other GPS information is normal, but the speed is 0.

Try to update the software, download the latest APP version, and upgrade the host firmware.

► Camera and Video Related Issues

? The dash-cam does not record after turning on.

- Check whether the TF card is inserted.
- Check whether the recorded videos are locked. After the capacity of the TF card is used up, the loop recording cannot be performed.
- Format the TF card, or try a new TF card.

? The dash-cam video monitoring interface displays a black screen.

Check whether the camera connection is normal, re-plug the camera, if the problem still exists, replace a new camera.

? Video is blurry.

Check the camera for dust, please wipe the camera.

? Video has no sound.

Check if the microphone is off.

? The video is locked during normal driving / the recorded video is all in the emergency video.


Adjust the vibration sensing sensitivity, or turn off the vibration sensing function.

? There will be stripe electromagnetic interference or purple stripe electromagnetic interference in the video displayed and recorded by the host.

- Check whether there is any problem with the camera wiring.
- When wiring, please run it smoothly, do not fold it and keep a certain margin.
- When tying the wiring, please do not tie it too tightly or squeeze it too tightly with the car shell.

► Application and WiFi Related Issues

? The WiFi connection is not working properly.

Check whether the WiFi is turned on, and the status bar of the screen will display  after it is turned on.

? App crashes.

Check the APP version number, download the latest App, and upgrade the dash-cam firmware.

Product Parameters

Model	D10Plus
Dash-cam Material	Metal material
Dash-cam Voltage	5V/3A, Power box step-down line input 9V-36V range
Dash-cam Size	105mm X 72mm X 55mm
Dash-cam Weight	250g
Package Weight (including accessories)	1.05kg
Storage	C10 and above high-speed card 64G (can record for 6 hours) / 128G (can record for 12 hours) / 256G (can record for 24 hours)
Screen Size	3-inch IPS high-definition LCD screen, 854*480 pixels
Camera	6G+IR filter, F1.6 large aperture
Image Sensor	Sony IMX307
Air Pressure Sensor	ST Semiconductor
Shock Sensor	ST Semiconductor
Imaging Technology	Built-in video wide dynamic WDR technology, can backlight high-definition display image peripheral
Video Resolution	Video Resolution 1920*1080 pixels / 1080P / 30F
Video Format	TS format
GPS Function	External GPS, support track playback, with air pressure and altitude
WiFi signal	2.4G WiFi
Sound Input	External Microphone
Waterproof Level	IP67

Tire Pressure Technical Parameter

Part	Project	Parameter
Tire Pressure Sensor	Working Frequency	433.9200MHz ± 0.1MHz
	Operating Voltage	2.4 ~ +3.3V
	Working Current	Static ≤ 1uA
		Working Current ≤ 15mA
	Working Temperature	-40°~+120°C
	Monitoring Range Temperature	-40°~+130°C
	Monitoring Range Air Pressure	0bar~3.5bar
	Temperature Accuracy	±2°C
Sensor Lithium Battery	Air Pressure Accuracy	±0.1bar
	Model	CR1632
	Working Temperature	-30°C~80°C

DEEPMOTO

Let DeepMoto's Dash-cam Record Every
Exciting Moment of Your Motorcycle Journey!
And Guard Your Safe Arrival To The Dream
Destination!



FCC Caution.

This device complies with part 15 of the FCC Rules. Operation is subject to the following two conditions: (1) This device may not cause harmful interference, and (2) this device must accept any interference received, including interference that may cause undesired operation.

Any Changes or modifications not expressly approved by the party responsible for compliance could void the user's authority to operate the equipment.

Note: This equipment has been tested and found to comply with the limits for a Class B digital device, pursuant to part 15 of the FCC Rules. These limits are designed to provide reasonable protection against harmful interference in a residential installation. This equipment generates uses and can radiate radio frequency energy and, if not installed and used in accordance with the instructions, may cause harmful interference to radio communications. However, there is no guarantee that interference will not occur in a particular installation. If this equipment does cause harmful interference to radio or television reception, which can be determined by turning the equipment off and on, the user is encouraged to try to correct the interference by one or more of the following measures:

- Reorient or relocate the receiving antenna.
- Increase the separation between the equipment and receiver.
- Connect the equipment into an outlet on a circuit different from that to which the receiver is connected.
- Consult the dealer or an experienced radio/TV technician for help.

This equipment complies with FCC radiation exposure limits set forth for an uncontrolled environment. This equipment should be installed and operated with minimum distance 20cm between the radiator & your body.

DEEPMOTO



Shenzhen Shendu Software Co., Ltd.

🌐 www.deepdesign.com.cn ✉ Deepmotoservice@163.com

📍 308, Building A, Wenle Industrial Zone, Longzhu Community,
Xixiang Street, Bao an District,
Shenzhen City, Guangdong Province, China