



User Manual

Smart Recessed Lighting Kit

1. Product Overview

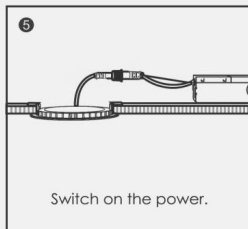
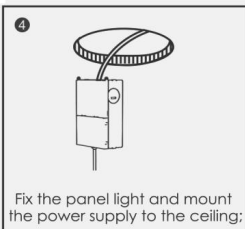
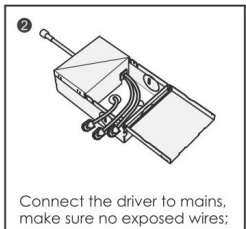
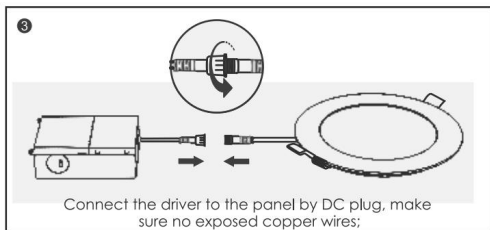
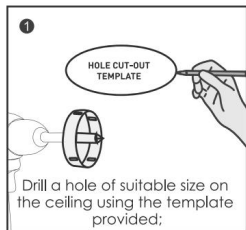
Thank you for purchasing Smart Recessed Lighting Kit. This kit adopts the standard Zigbee3.0 communication protocol, compatible with multi-platform use, easy to install, simple to use, and can provide stable and simple wireless control for lighting. With dimming, color adjustment, and other functions, to meet the daily lighting, but also to create a sense of leisure, comfort, and other atmospheres, to meet the needs of your rich personality lighting scene.

2. Using the Steps

- 1.Install the Recessed Lights (refer to Chapter 3 for details).
- 2.Connect the Matter gateway (refer to Chapter 4, also refer to the gateway operation instructions).
- 3.Connect the platform to use (refer to electronic file's Chapter 7 for details).

3.Installation Instructions for Recessed Light

Installation process



4. Matter Gateway Connection

Connect the gateway to the 5V power supply (Type-C port), and use the cable to connect the gateway's LAN port to the router's LAN port, and the indicator light will turn green for normal use.



5. Restoring Factory Settings of the Matter Gateway

Long press the RESET button at the bottom of the gateway for 5S, the white light of the indicator light flashes, restoring factory settings is successful and the gateway starts.

6. Recessed Light restore factory settings (trigger light into pairing mode)

Toggle the Light powered on and off 5 times within 10s (pay attention to the power off and on interval 1S), the light blinked three times, and the device reset successfully, at this time the device is in the state of looking for the network for the 60S.

7. User manual electronic file

For more information on how to use the platform, please download the e-Manual, download link:

http://xskylight.com/doc/FSPC999W_manual.html



Download Link QR Code

Packing List

Matter Gateway*1

Network Cable*1

Adapter*1

Type-C cable*1

User Manual*2

Recessed Light*4

Junction Box *4

Precautions

1. This product is wireless communication, please do not place the product in a metal box to work, in case the signal is shielded;
2. Ambient temperature range: $-25^{\circ}\text{C} \sim +70^{\circ}\text{C}$, ambient humidity: maximum 95%RH;
3. Avoid using in chemical or combustible gas, saturated salt spray, highly humid for a long time, or other abnormal environment;
4. It should be installed in a place where there is no rain or snow intrusion, and the medium is free of gas and dust sufficient to corrode metal and destroy insulation, not to mention the danger of explosion.

Warranty

The company's products are free of charge warranty for two years (except for the appearance of parts and personal use caused by improper damage);

The following cases are not covered by the free warranty:

1. Machines that have been disassembled or repaired by non-authorized maintenance centers;
2. Damage caused by natural disasters such as flood, fire, lightning, and so on;
3. Due to falling, extrusion, immersion, moisture, and other human-caused damage;
4. Product failure caused by not using the product by the rated parameters (voltage, etc.) of the product instruction manual (the shell is not covered by the warranty).

Warning:

This device complies with Part 15 of the FCC Rules. Operation is subject to the following two conditions: (1) this device may not cause harmful interference, and (2) this device must accept any interference received, including interference that may cause undesired operation.

Changes or modifications not expressly approved by the party responsible for compliance could void the user's authority to operate the equipment.

NOTE: This equipment has been tested and found to comply with the limits for a Class B digital device, pursuant to Part 15 of the FCC Rules. These limits are designed to provide reasonable protection against harmful interference in a residential installation. This equipment generates uses and can radiate radio frequency energy and, if not installed and used in accordance with the instructions, may cause harmful interference to radio communications. However, there is no guarantee that interference will not occur in a particular installation. If this equipment does cause harmful interference to radio or television reception, which can be determined by turning the equipment off and on, the user is encouraged to try to correct the interference by one or more of the following measures:

- Reorient or relocate the receiving antenna.
- Increase the separation between the equipment and receiver.
- Connect the equipment into an outlet on a circuit different from that to which the receiver is connected.
- Consult the dealer or an experienced radio/TV technician for help.

NOTE: This device and its antenna(s) must not be co-located or operation in conjunction with any other antenna or transmitter

RF Exposure Statement

To maintain compliance with FCC's RF Exposure guidelines, This equipment should be installed and operated with minimum distance of 20cm the radiator your body. This device and its antenna(s) must not be co-located or operation in conjunction with any other antenna or transmitter