

Owners Manual



STARK FUTURE



STARK FUTURE'S MISSION
IS TO LEAD THE WAY
TOWARD A SUSTAINABLE
MOTORCYCLE INDUSTRY,
BY REDUCING PLASTIC
AND CO₂ POLLUTION.
THIS WILL BE
ACHIEVED BY BUILDING
SUSTAINABLE PRODUCTS
THAT ARE SUPERIOR
TO TRADITIONAL
TECHNOLOGY IN TERMS
OF PERFORMANCE,
EMOTION AND DESIGN.

THE AMBITION

Inspire sustainability by offering a game-changing experience.

Limit global warming by reducing CO₂ pollution.

Save lives by reducing plastic pollution.

Be a leader in quality using sustainable materials.

Be a leader in performance, innovation and technical exploration.

Design functional and timelessly beautiful products.

Be great at sourcing, to make premium products available to more people.

Enhance user experience by persistently simplifying functionality.

THE PHILOSOPHY

Stark Future's logo represents the company's full-circle mentality, sustainability and strive for perfection.

Uncompromising with results, the logo is 24 Karat gold to reflect the desire to be number 1.

Our work mentality is based upon three pillars:

We challenge the norm to improve how things are done.

We search for the limit, we adapt and we set clear, smart and inspiring goals.

We deliver outstanding results.

We would like to thank you for the purchase of your Stark VARG, and we would like to offer you our warmest welcome to the Stark Future family. We hope you enjoy the Stark VARG as much as we do!



CONTENTS

1 INTRODUCTION

1.1	Description of the user	13
1.2	About this owners manual	13
1.3	How to use these instructions	15
1.4	Conventions used in this manual	16
1.5	Explanation of safety warnings	17
1.6	Obtaining documentation and information	18

2 DESCRIPTION OF THE STARK VARG

2.1	Intended use and reasonably foreseeable misuse	20
2.2	General description of the Stark VARG	20
2.3	Product elements	22
2.3.1	Important parts	22
2.3.2	Important controls	28
2.4	Visual indicators	29
2.5	Technical data	30
2.5.1	Position of the VIN number	30
2.5.2	Technical Specifications	30

3 SAFETY

3.1	How to use the Stark VARG safely	34
3.1.1	General safety information	34
3.1.2	Safety information regarding the battery and charger	35
3.1.3	Safety information regarding the use	37
3.1.4	Safety information regarding maintenance and repairs	39
3.2	California Proposition 65 and California Perchlorate Advisory	41
3.3	Potential health consequences	42

4

ASSEMBLING
THE STARK VARG

4.1	Getting started	45
4.2	How to unpack and assemble the Stark VARG	45

5

USING
THE STARK VARG

5.1	Connecting the battery	64
5.2	How to charge the Stark Varg	67
5.3	How to remove and charge the Stark phone	70
5.4	How to USE the Stark Future app	71
5.5	How to prepare the Stark VARG for a safe ride	72
5.5.1	Mechanical safety check table	73
5.5.2	Torque setting table	76
5.6	How to ride the Stark Varg	79
5.6.1	Use the throttle	81
5.6.2	Use the brakes	82
5.6.3	Switch between ride modes	84
5.6.4	Use the adjustable suspension system	85
5.6.5	Front suspension	87
5.6.6	Rear Suspension	88
5.7	What to do in an emergency situation	90
5.7.1	What to do in case of malfunction or breakdown	90
5.7.2	What to do in case of an accident	91
5.7.3	What to do in case of fire	91

6 CLEANING AND MAINTENANCE

6.1	Maintenance schedule	94
6.1.1	Before and after every ride	94
6.1.2	Service intervals	98
6.1.3	Service intervals	99
6.2	Cleaning the Stark VARG after use	99
6.3	Lubricating the chain	102
6.4	Adjusting the chain tension	103
6.5	Adjusting the brakes	106

7 TRANSPORT AND STORAGE

7.1	Centre of gravity	109
7.2	Handling and transporting the Stark VARG	110
7.3	Storing the Stark VARG	111

8 TROUBLESHOOTING AND REPLACING PARTS

8.1	Troubleshooting	115
8.2	Replacing parts	115

9 DISPOSAL

9.1	How to recycle parts	117
9.2	How to dispose of harmful substances	117
9.3	How to dispose of electronic components	118
9.4	How to dispose of packaging waste	119
9.5	How to dispose of batteries	119

10

APPENDIXES

I	Declaration of conformity	121
II	FCC statement	123
III	License agreement	125
IV	Data protection	130
V	Warranty	141
VI	Disclaimer	144

1

INTRODUCTION

1.1

DESCRIPTION
OF THE USER

This owner’s manual is intended for the end-user of the Stark VARG. The end-user can be described as each person who interacts directly with the product.

All use of the product shall only be carried out by an authorized and a properly qualified and skilled person of 18 years or older, who:

- Has read and understood this manual.
- Is familiar with operating similar products.
- Knows how to control this product.
- Is aware of all possible dangers and acts accordingly.
- Is trained and authorized by applicable legislation to ride our motorcycle.

The required maintenance and/or inspection work as stated in this user manual is allowed by the end-user, unless clearly indicated when this is not allowed.

1.2

ABOUT THIS
OWNERS MANUAL

The purpose of this document is to make you familiar with the features and specifications of the Stark VARG, so that you can safely operate it as an end-user.

This documentation should therefore be regarded as an integral part of the product.

The information provided in this document contains general descriptions and/or technical characteristics of the performance of the products contained herein. This documentation is not intended as a substitute for and is not to be used for determining suitability or reliability of these products for specific user applications. It is the duty of any such user or integrator to perform the appropriate and complete risk analysis, evaluation and testing of the products with respect to the relevant specific application or use thereof. Neither Stark Future nor any of its affiliates or subsidiaries shall be responsible or liable for misuse of the information that is contained herein. If you have any suggestions for improvements or amendments or have found errors in this publication, please notify us.

Furthermore, the manufacturer reserves the right to revise this publication at any time without incurring an obligation to notify any person of the revision. The content of these instructions is constantly monitored and, where necessary, modified. However, inconsistencies between these documents can not be excluded. No guarantee is therefore given with regard to the completeness of these instructions. All images in this document are for illustrative purposes only.

HOW TO USE THESE INSTRUCTIONS



**IMPORTANT
READ CAREFULLY
BEFORE USE AND KEEP
FOR FUTURE REFERENCE**

READ AND UNDERSTAND THIS MANUAL AND ITS SAFETY INSTRUCTIONS BEFORE USING THIS PRODUCT. FAILURE TO DO SO CAN RESULT IN SERIOUS INJURY OR DEATH.

FOLLOW ALL THE INSTRUCTIONS. THIS WILL AVOID FIRE, EXPLOSIONS, ELECTRIC SHOCKS OR OTHER HAZARDS THAT MAY RESULT IN DAMAGE TO PROPERTY AND/OR SEVERE OR FATAL INJURIES.

THE PRODUCT SHALL ONLY BE USED BY PERSONS WHO HAVE FULLY READ AND UNDERSTAND THE CONTENTS OF THIS MANUAL.

ENSURE THAT EACH PERSON WHO USES THE PRODUCT HAS READ THESE WARNINGS AND INSTRUCTIONS AND FOLLOWS THEM.

KEEP ALL SAFETY INFORMATION AND INSTRUCTIONS FOR FUTURE REFERENCE AND PASS THEM ON TO SUBSEQUENT USERS OF THE PRODUCT.

THE MANUFACTURER IS NOT LIABLE FOR CASES OF MATERIAL DAMAGE OR PERSONAL INJURY CAUSED BY INCORRECT HANDLING OR NON-COMPLIANCE WITH THE SAFETY INSTRUCTIONS. IN SUCH CASES, THE WARRANTY WILL BE VOIDED.

1.4 CONVENTIONS USED IN THIS MANUAL

The following style conventions are used in this document:

Bold:

- Names of elements, commands, options, programs, processes, services, and utilities.
- Names of interface elements (such as windows, dialog boxes, buttons, fields, and menus).
- Interface elements the user selects, clicks, presses, or types.

Italic:

- Publication titles referenced in text.
- Emphasis (for example a new term).
- Variables.

EXPLANATION OF SAFETY WARNINGS



DANGER

“**DANGER!**” indicates a hazard with a high level of risk which, if not avoided, will result in death or serious injury



WARNING

“**WARNING!**” indicates a hazard with a medium level of risk which, if not avoided, could result in death or serious injury.



CAUTION

“**CAUTION!**” indicates a hazard with a low level of risk which, if not avoided, could result in minor or moderate injury.



NOTICE

“**NOTICE**” Indicates information considered important, but not hazard-related.

1.6 OBTAINING DOCUMENTATION AND INFORMATION

This is the original English owners manual. Manuals in other languages are available upon request.

For ordering spare parts visit the website: starkfuture.com ↗

For inquiries, information, technical assistance or any other questions or feedback, please contact us:

Email support@starkfuture.com

or

Stark Future SL

Carrer Batan 2-8

08830 Sant Boi de Llobregat

Barcelona

Spain

2

DESCRIPTION
OF THE STARK VARG

2.1 INTENDED USE AND REASONABLY FORESEEABLE MISUSE

The Stark VARG is intended to be used for motorcycling on a dirt bike track.

The Stark VARG is not intended to be used for motorcycling on public roads.

Only use the product within the specified performance limits and according to the instructions as described in this manual. All use other than described in this manual is seen as unintended use.

The product shall be used with the following original software, accessories and components only:

- Stark Future phone
- Stark Future app
- Stark VARG charger stand

2.2 GENERAL DESCRIPTION OF THE STARK VARG

The Stark VARG is an electrically powered motorcycle. It consists of a motorcycle with an integrated battery and electric motor. It also contains a detachable smartphone containing the Stark Future app. The product comes with a charger stand.

The Android Stark phone contains the Stark Future app, which allows the end-user to customize the motorcycle by adjusting the power curve, the engine braking, the flywheel effect and the traction control. The Stark phone does not have to be docked in order to use the motorcycle. However when it is docked, the display of the phone is used as a dashboard display.

The Stark VARG is turned on by pressing the On/Off button on the control switch. With the + and - buttons, the rider can switch between different riding modes. The Vehicle Control Unit integrated on the Stark VARG contains default riding modes, which can be overridden by the user via the Stark Future app.

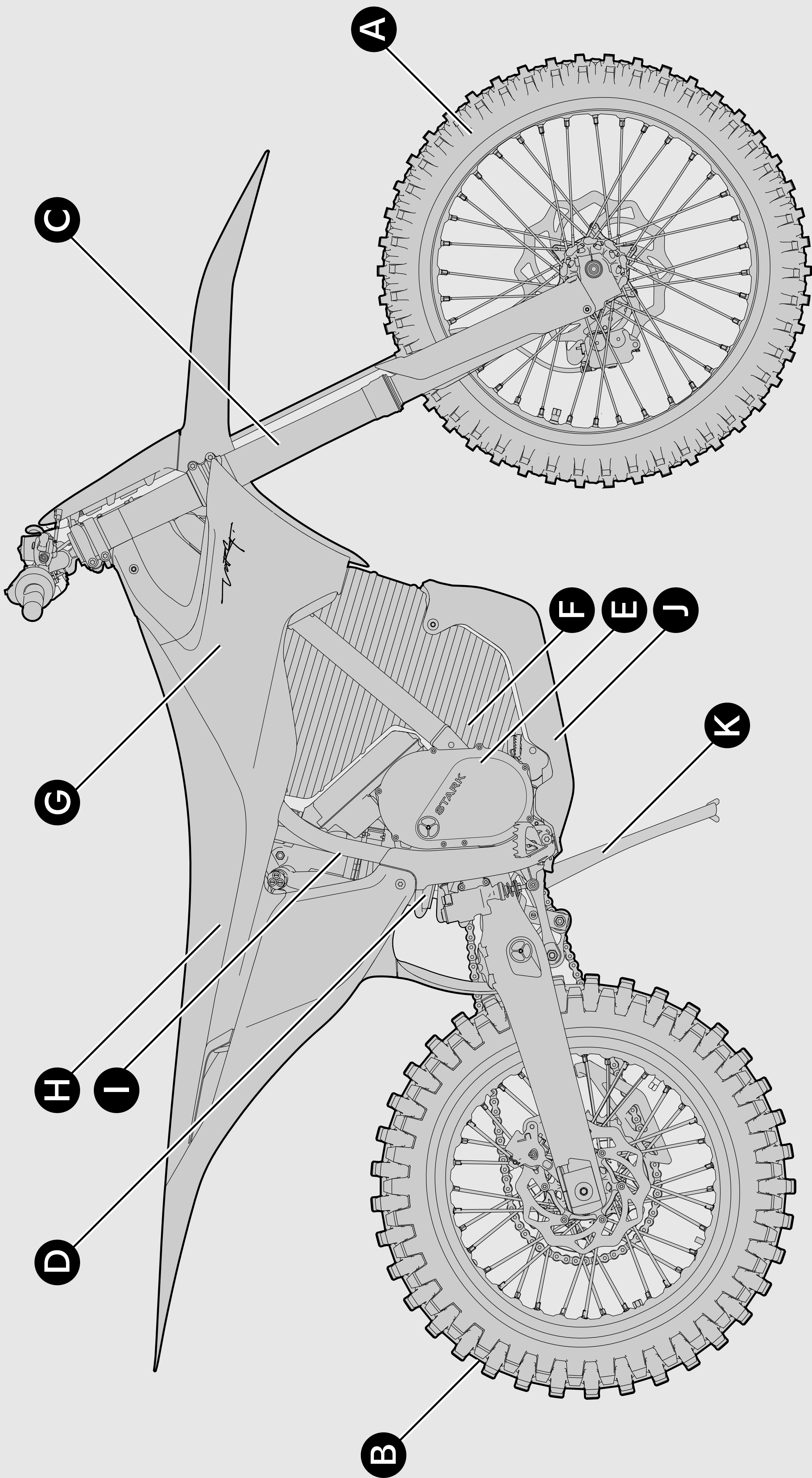
The Stark VARG comes in two versions, a 60 hp variant called Standard and a 80 hp variant called Alpha. The Stark VARG is offered in three colors and is further customizable by choosing a hand or foot rear brake, two different rear wheel sizes, a side stand option and seven suspension sets based on the rider's weight. More information on the options on our website starkfuture.com ↗.

2.3

PRODUCT
ELEMENTS

2.3.1

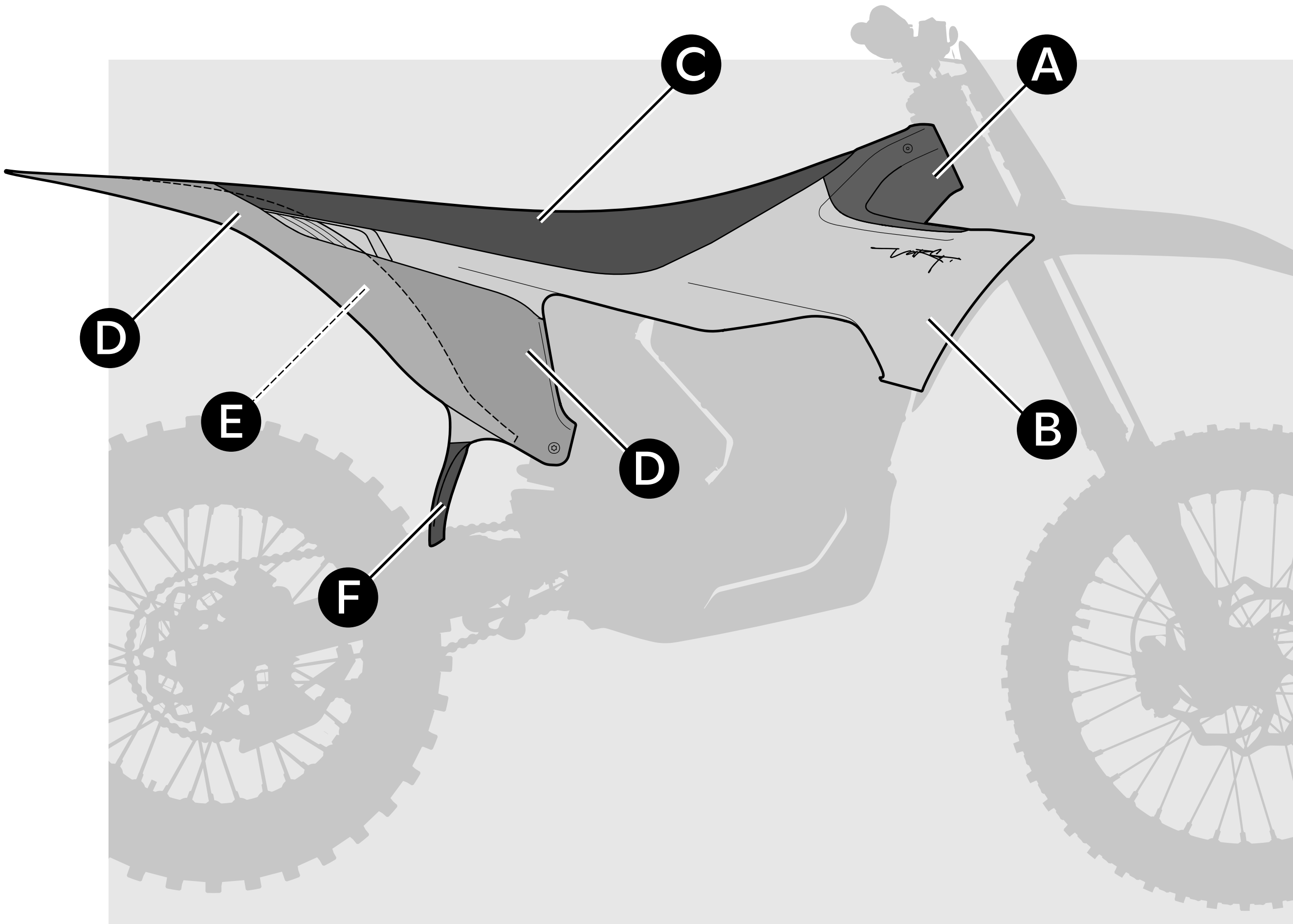
Important parts



(Image on previous page)

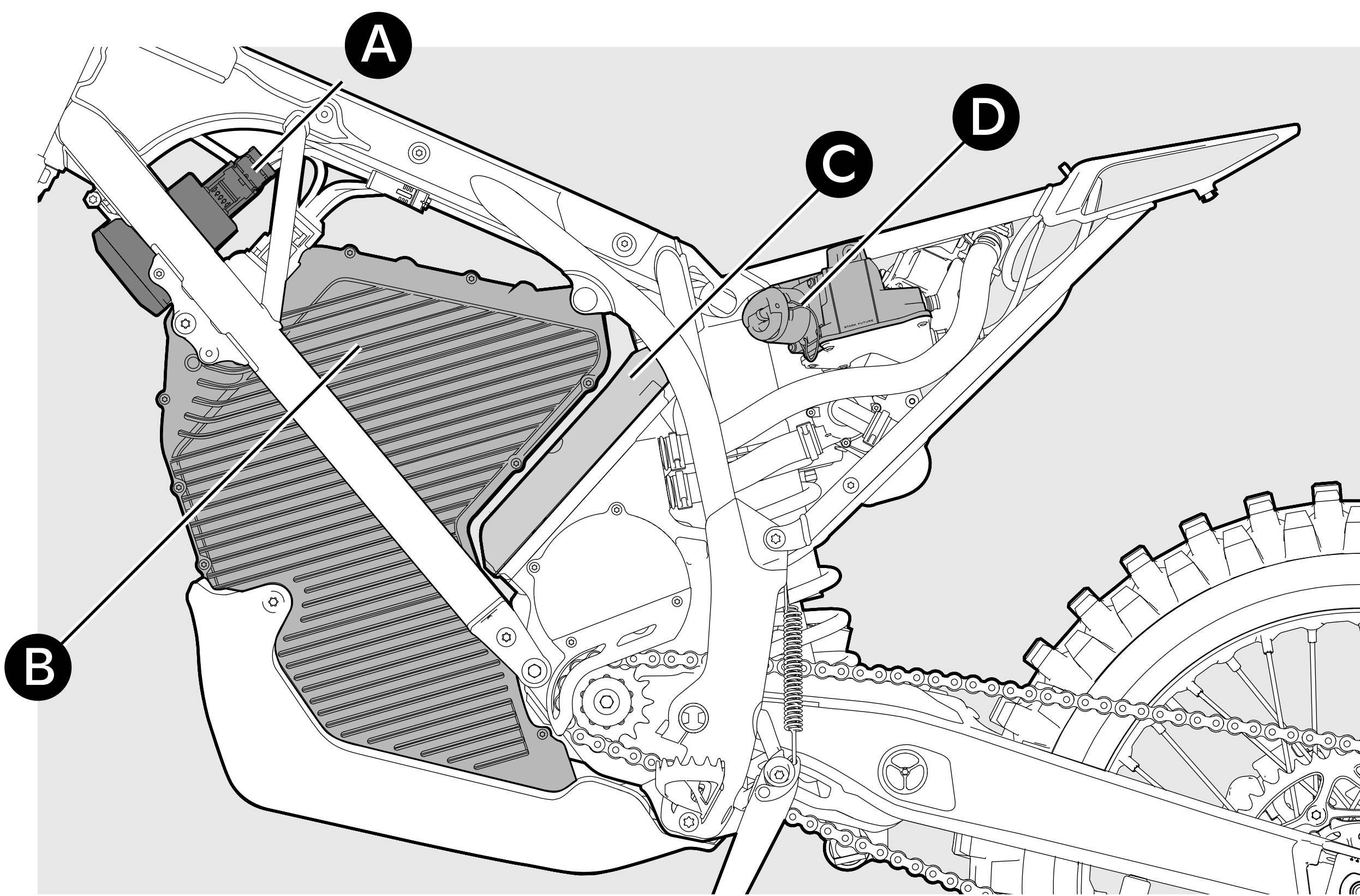
- | | |
|---------------------------|---------------------|
| A Front wheel | G Spoilers |
| B Rear wheel | H Seat |
| C Front suspension | I Frame |
| D Rear suspension | J Skid Plate |
| E Powertrain | K Side stand |
| F Battery | (if equipped) |

SPOILERS



- | | |
|-------------------------------|----------------------------|
| A Carbon fiber spoiler | D Rear fender |
| B Side spoiler | E Lower rear fender |
| C Seat | F Mudflap |

ELECTRONIC COMPONENTS



- A

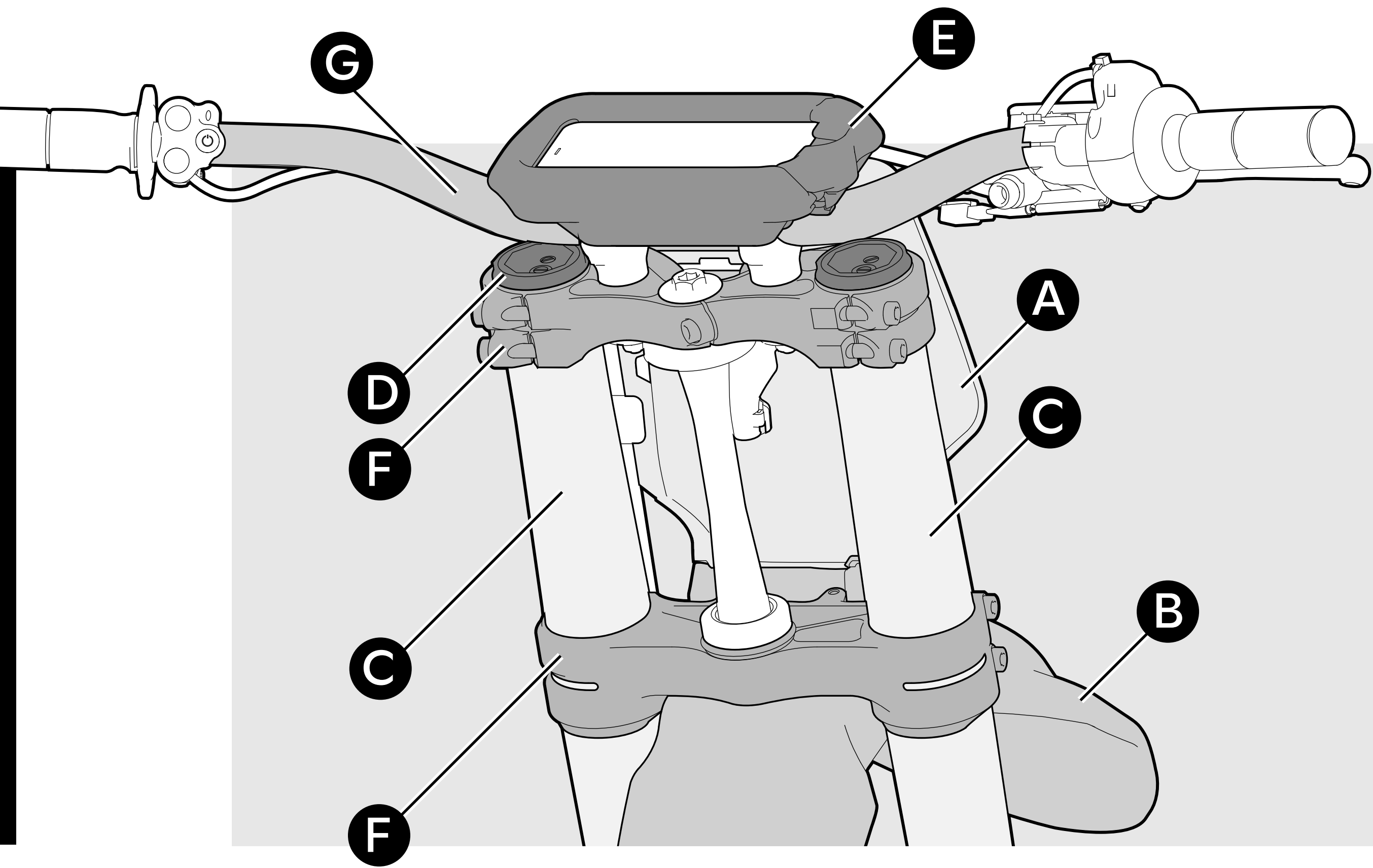
VCU
- B

Battery
- C

Inverter
- D

Charging port

FRONT SUSPENSION

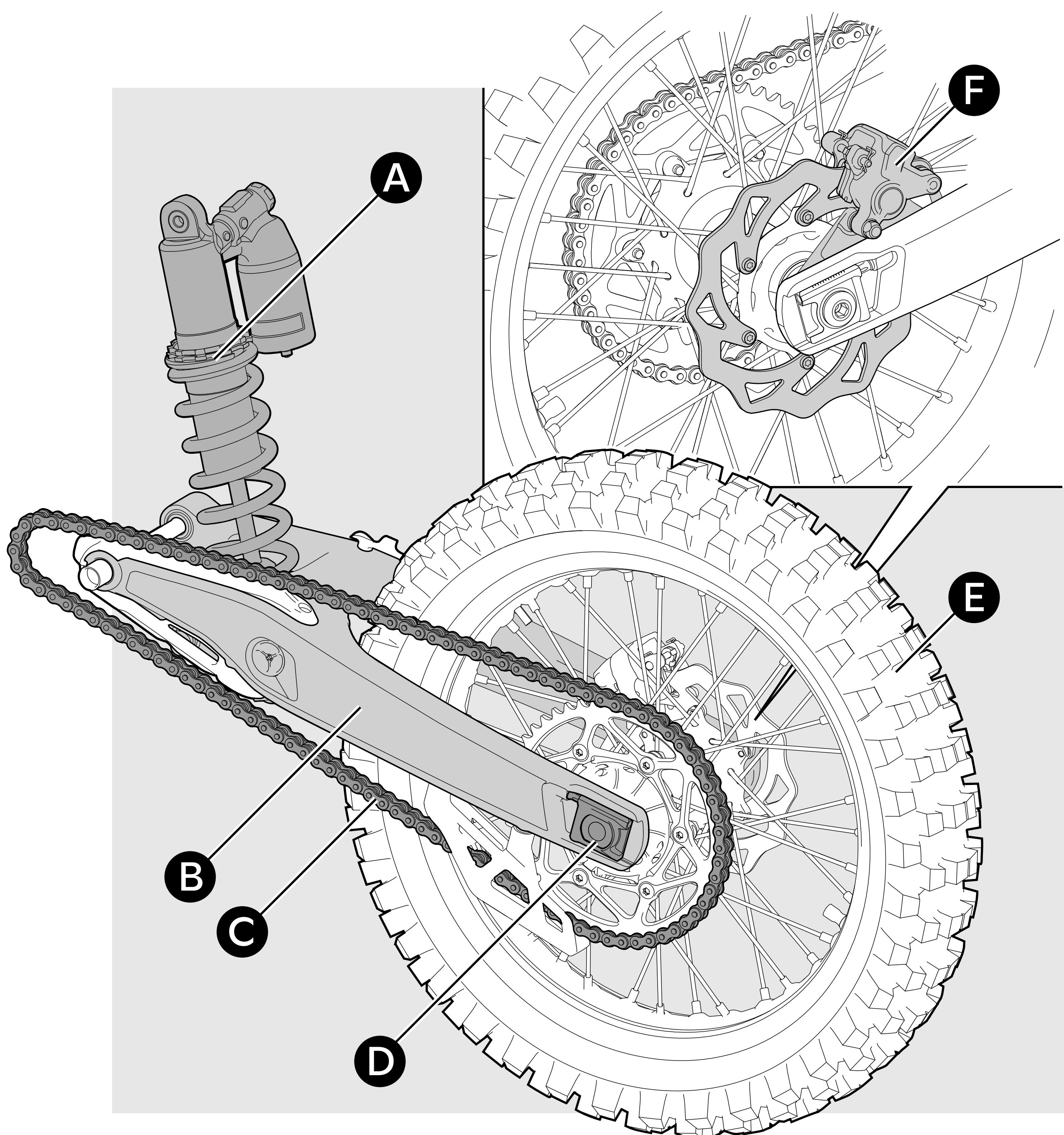


(Image on previous page)

- A** Number plate
- B** Front fender
- C** Forks
- D** Compression adjusters

- E** Docking station
- F** Triple clamps
- G** Handlebar

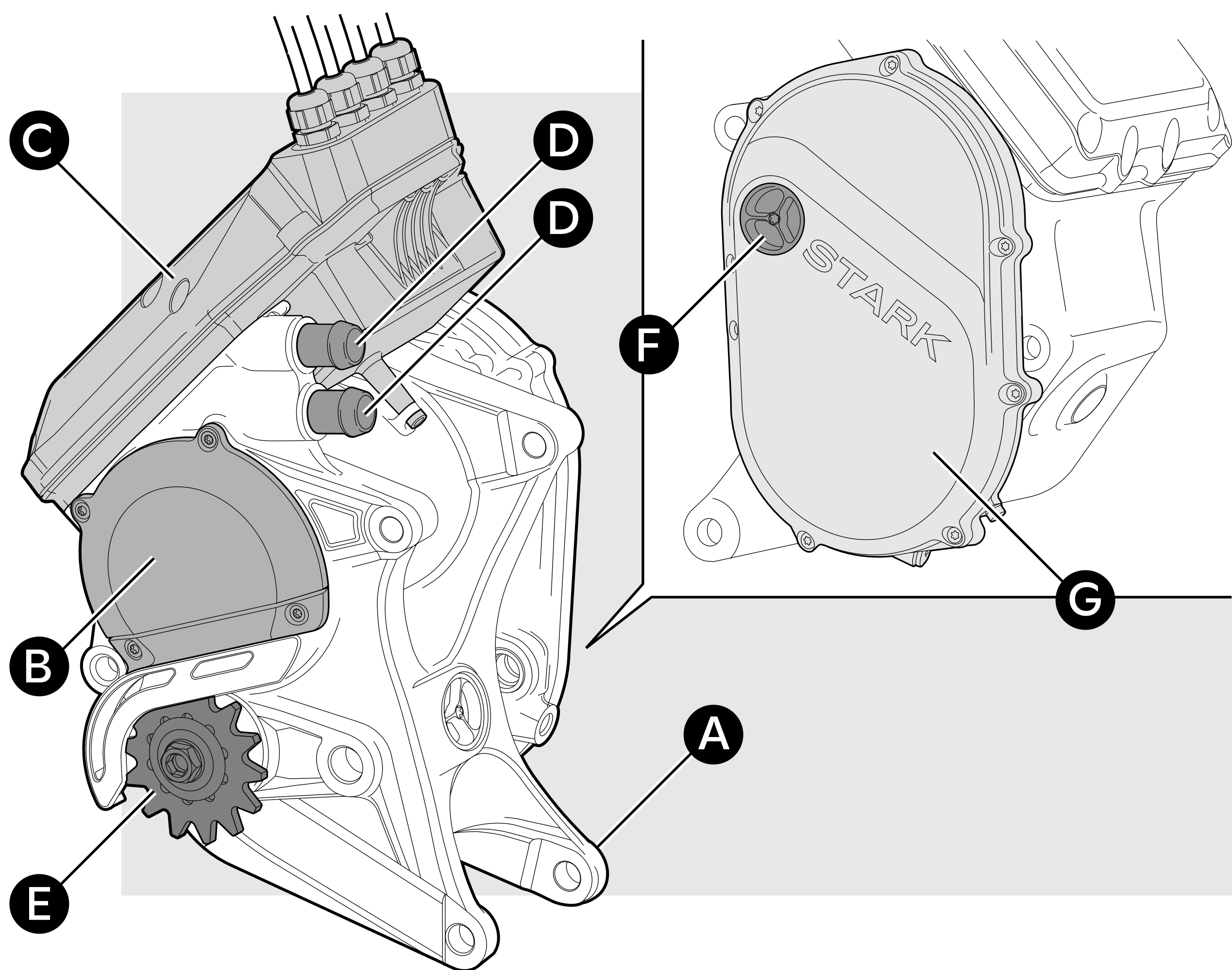
REAR SUSPENSION



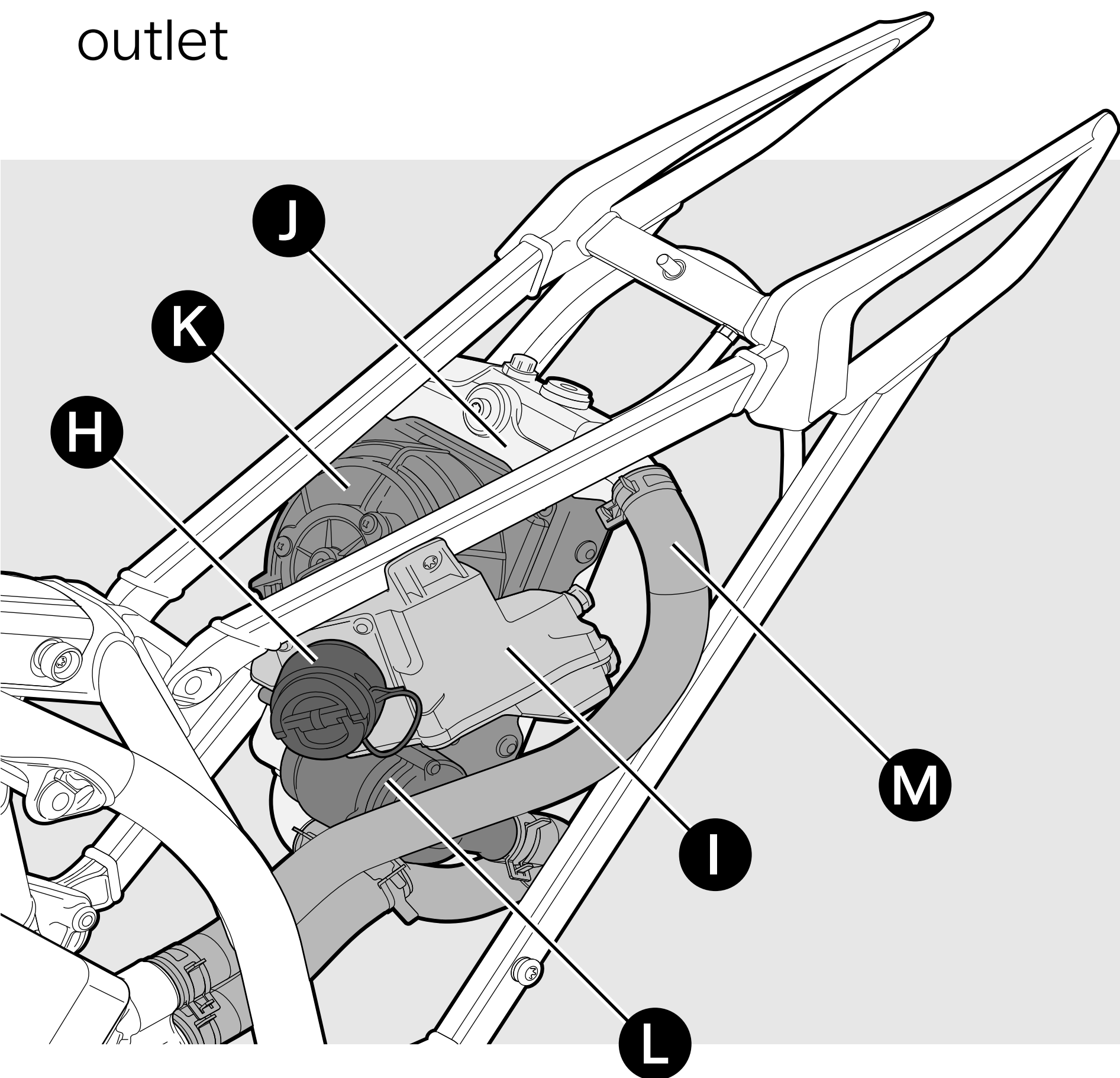
- A** Shock
- B** Swingarm
- C** Chain

- D** Chain tensioner
- E** Wheel
- F** Rear brake

POWERTRAIN



- A Motor case
- B Left motor cover
- C Inverter
- D Cooling inlet/
outlet
- E Front sprocket
- F Oil filling cap
- G Right motor cover



(Image on previous page)

- H

Charging port cap
- I

Charging port box
- J

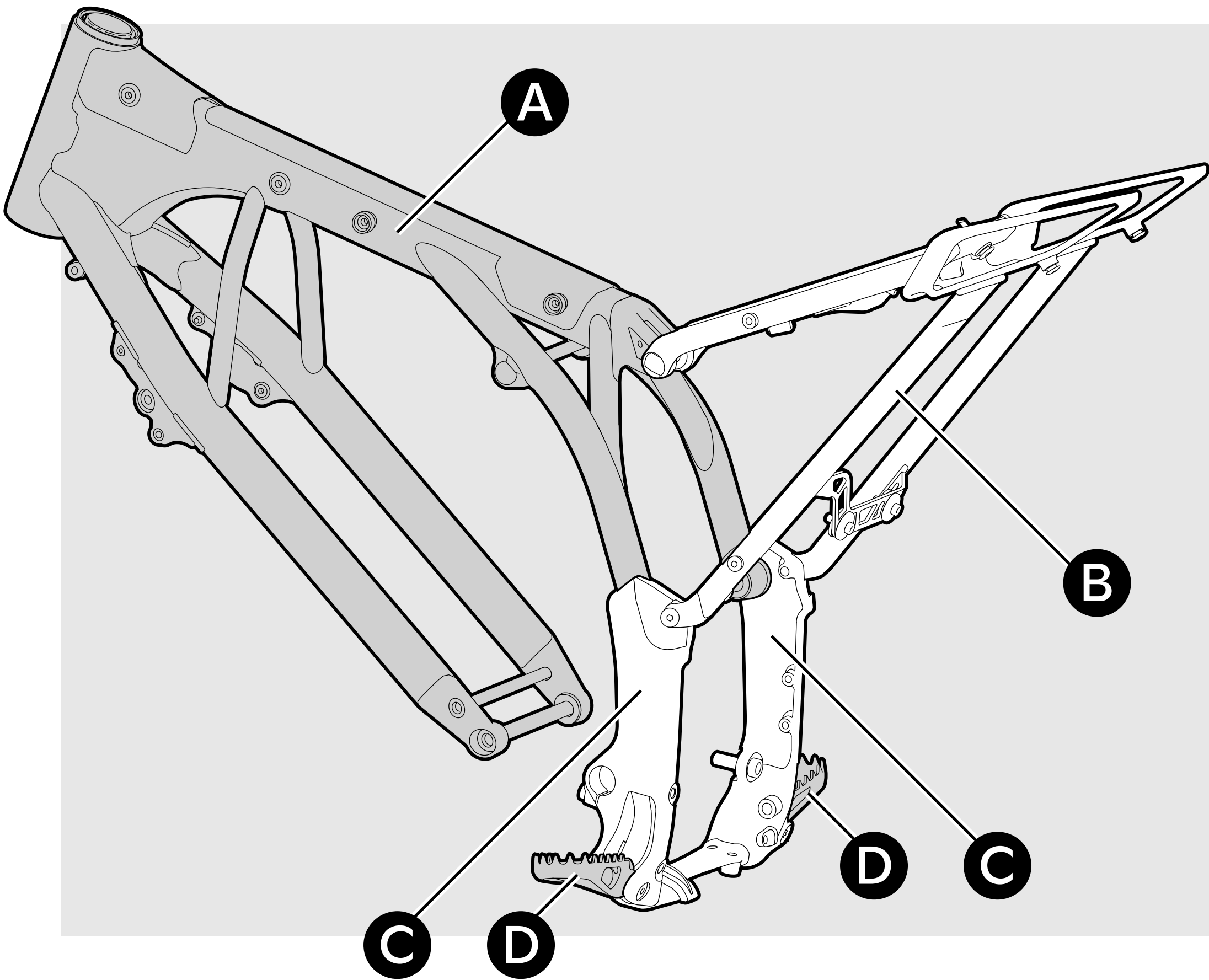
Radiator
- K

Fan
- L

Water pump
- M

Inlet/outlet cooling hoses

FRAME



- A

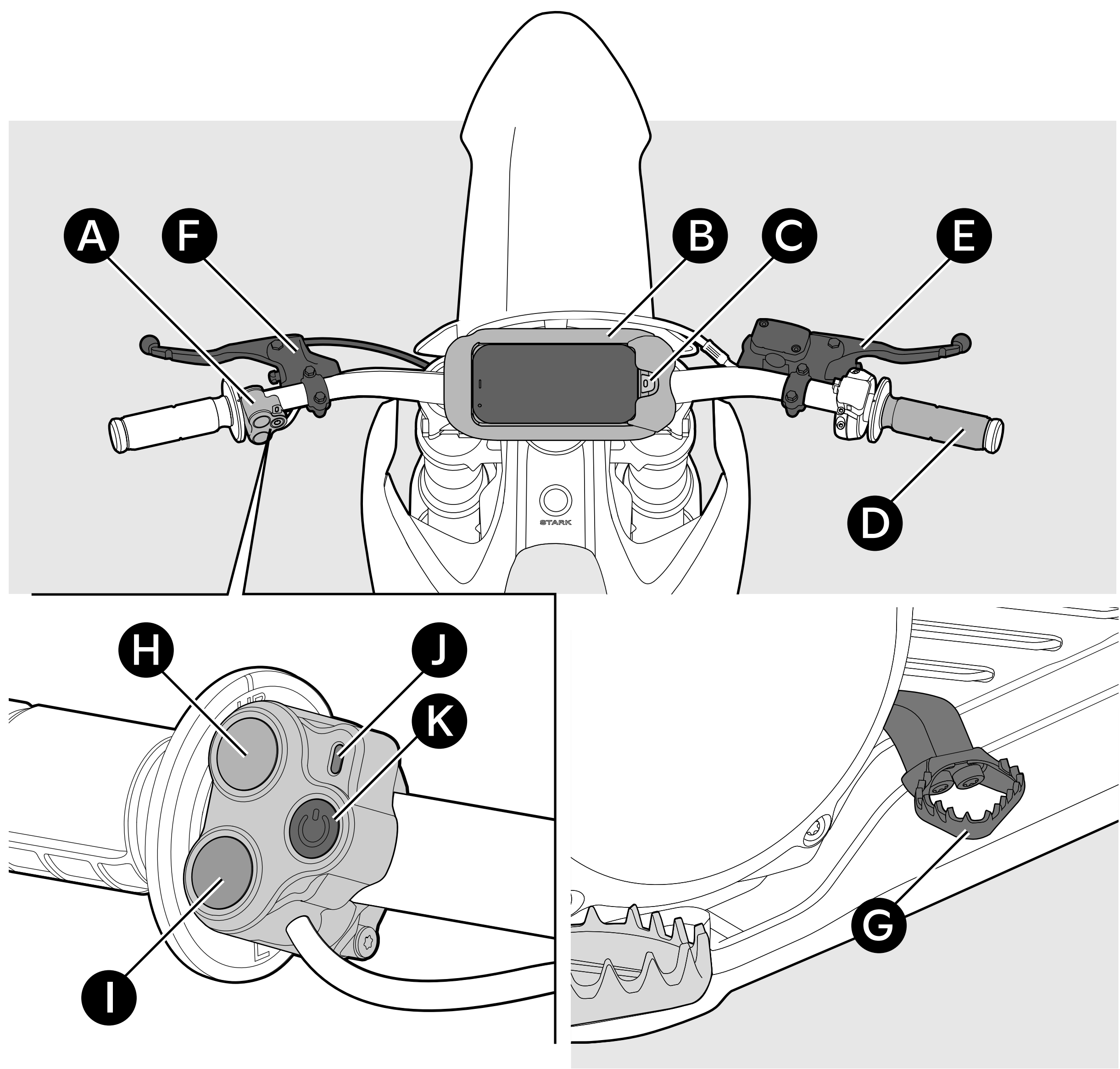
Frame
- B

Subframe
- C

Side plates
- D

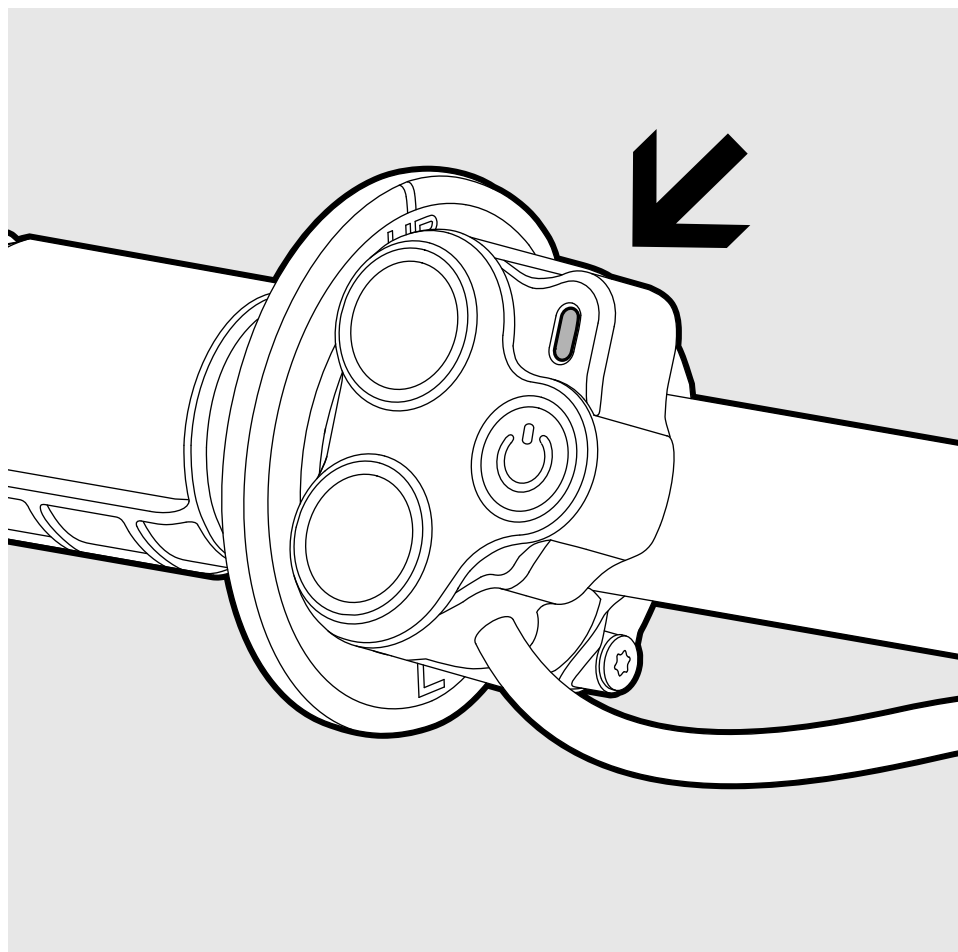
Foot pegs

2.3.2 Important controls



- | | |
|-------------------------------------|-------------------------------------|
| A Control switch | G Rear foot brake (optional) |
| B Docking station | H Plus button |
| C Phone release button | I Minus button |
| D Throttle | J LED light |
| E Front hand brake | K On/Off button |
| F Rear hand brake (optional) | |

2.4 VISUAL INDICATORS



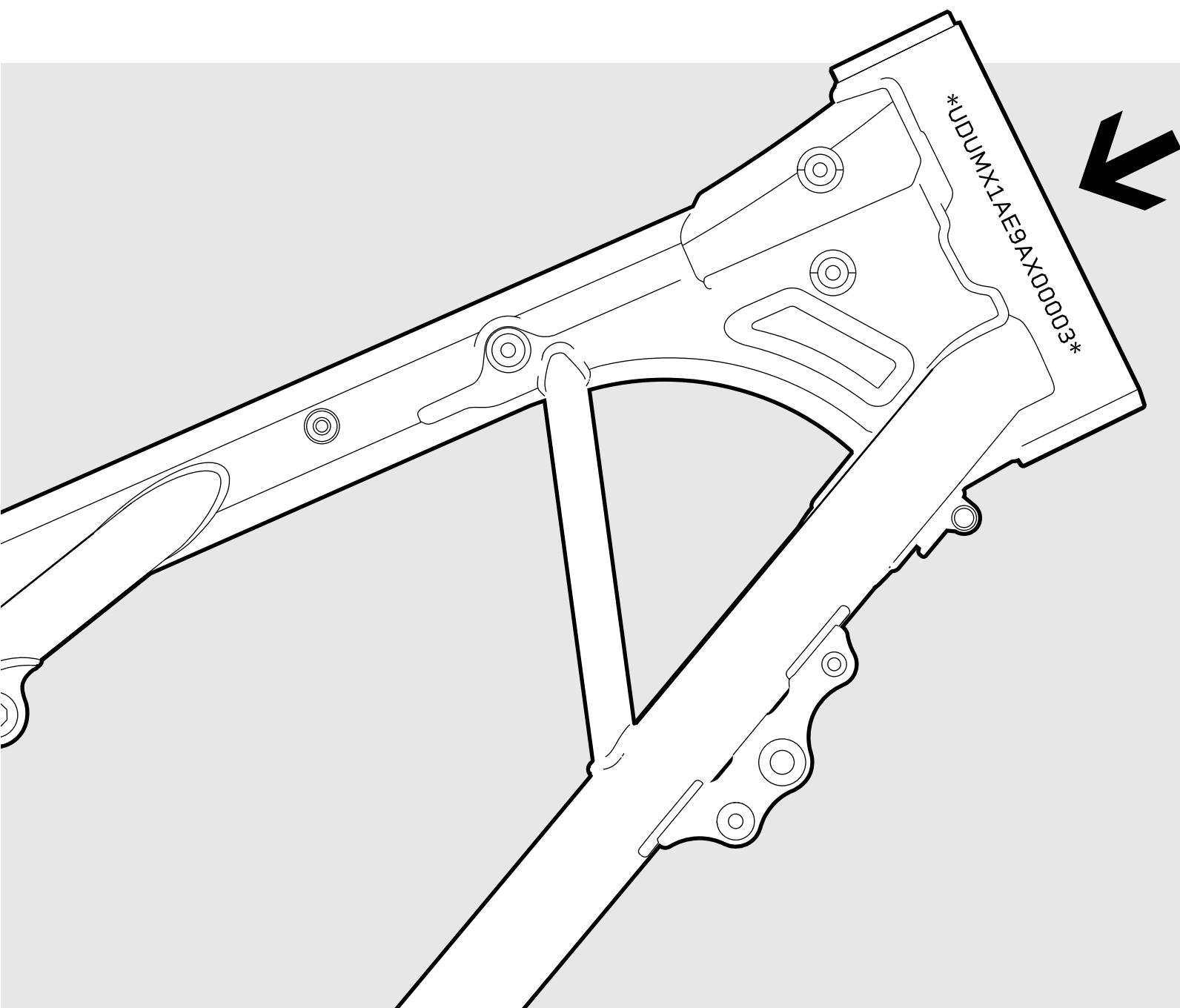
The control switch contains a **LED light** which can change color. Each color has a different meaning.

Color	Meaning
● Dark blue	The battery is charging.
● Light blue	The battery is charging with cooling system active.
● Blinking green	The motorcycle is On and in neutral. The throttle does not work.
● Green	The motorcycle is On and ready to go.
● Red	Lights up just before stopping the motorcycle.
● Magenta	Ready to update.

2.5 TECHNICAL DATA

2.5.1 Position of the VIN number

The Vehicle Identification Number can be found on the frame.



2.5.2 Technical Specifications

Parameter	Standard 60hp	Alpha 80hp
Device name	Stark VARG <i>Standard</i>	Stark VARG <i>Alpha</i>
Designation	Competition Electric MX Motorcycle	
Manufacturer	Stark Future	

Parameter	Standard 60hp	Alpha 80hp
Country of manufacture	Spain	
Technical life span	500 running hours	
Dimensions (L×W×H)	2185×825×1297 mm 86×32.5×51 inch	
Max Power	44.7 kW	59.7 kW
Weight	118 kg 260 lbs	
Motor type	SPMAC machine	
Max rpm	14200	
Max motor torque	60 Nm 44.25 ft-lbs	80 Nm 59 ft-lbs
Chemical composition of the battery	Lithium-ion	
Battery specifications	6.48 kWh, 420 V	
Riding time	Up to 6 hours	
Charging time	2 hours (on 220 V)	
Top speed	110 kmh 68 mph	

Parameter	Standard 60hp	Alpha 80hp
Max carrying capacity depending on suspension Check your suspension type	<ul style="list-style-type: none"> • 65-70 kg 143-154 lbs • 70-75 kg 154-165 lbs • 75-80 kg 165-176 lbs • 80-85 kg 176-187 lbs • 85-90 kg 187-198 lbs • 90-95 kg 198-209 lbs • 95-100 kg 209-220 lbs 	
Motor oil	SAE 75w-90 gear oil	
Refrigerator liquid	Glycol based coolant	
Sound level	<70dB	
Pressure sound emission	<80dB	
Frequency band	2.4 GHz	
Maximum radio-frequency power Transmitted in the frequency band(s) in which the radio equipment operates	2480 MHz	
Recommended operation and storage ranges	<ul style="list-style-type: none"> • Temperature: 0 to + 25 °C 32 to 77 °F • Humidity: 0 - 60% 	

3

SAFETY

3.1

HOW TO USE THE STARK VARG SAFELY



DANGER

Read and understand this manual and its safety instructions before using this product. Failure to do so can result in serious injury or death.

3.1.1

General safety information



WARNING

- The product shall only be used as described by the manufacturer. All other use cases are unprofessional and considered dangerous. The manufacturer cannot be held liable for damage resulting from errors, unintended or unprofessional use of the product.
- The product is not intended for use by persons (including children) with restricted physical, sensory or intellectual capability or lack of experience and/or knowledge.



WARNING

- Only use the product within the specified performance limits as described in these instructions.
- Do not remove warning labels from the product.
- Inspect the packaging and product for any damages, before assembling the product. If there are any damages, contact us.

3.1.2 Safety information regarding the battery and charger



DANGER

- **Risk of injury or death!** Do not use the product if the battery pack is damaged. When the battery pack is damaged, it may present a fire hazard.
- **Risk of explosion!** The battery and the charger must be dry before operation. Dry the battery and the charger with a soft cloth.
- **Risk of explosion!** Do not charge or use a battery that is damaged. If the battery is damaged, it must be discarded immediately.



DANGER

- **Risk of damage!** After charging, the charger must be disconnected from the battery and the AC power socket immediately.
- Always charge and store the battery in a dry environment.
- Do not charge a battery at temperatures below 4°C (40°F).
- Do not charge a battery that has been exposed to seawater.
- Do not charge the battery with charger cables that may be damaged.
- Do not charge the battery near flammable materials.
- Do not leave the battery unattended while charging.
- If the product appears to be bulging or shows other undesirable phenomena (e.g. excess noise), stop using the product immediately.
- Do not cover the product while charging the battery. Charge the product in a well-ventilated environment.
- Batteries produce heat when charging and discharging. If the product becomes too hot to touch, switch the product off and unplug immediately.
- If the battery leaks avoid contact with skin and eyes. Rinse affected areas immediately with plenty of clean water, then consult a doctor.

3.1.3 Safety information regarding the use



DANGER

- **Risk of injury or death!** Do not use the product under the influence of alcohol, any medicine or illegal drugs that could alter your capacity to drive, or if you are not physically or mentally able to drive.
- **Risk of injury or death!** It is formally prohibited to use the product if the product, or one of its components, hasn't been properly maintained or if it is used outside the scope of the intended use. It is forbidden to open the motor or the battery pack.
- **Risk of injury or death!** The user assumes all responsibility while operating the product. The seller assumes no liability for misuse or operator negligence.
- **Risk of injury or death!** To reduce the risks of potential injury while using the product, it is necessary to be equipped with all compulsory protective clothing. For any kind of trip and for any person(s) that use the product, it is necessary to wear the correct protective clothing (helmet, boots, gloves, trousers and jacket equipped with protective means).



DANGER

- **Risk of injury or death!** Only use protective clothing and helmet that is in perfect condition and complies with the legal requirements of the country of use.
- **Risk of injury or death!** Always be vigilant when activating a new ride mode. Beware that the settings which can be adjusted in the Stark Future app influence the behavior of the motorcycle.
- **Risk of injury!** Always turn the product off when you are not riding, by pressing the On/Off button on the control switch. An accident may occur if the product is powered up while getting on or off the product and the throttle is twisted.
- **Risk of injury!** When using the product, some components start moving (chain, wheels) and become dangerous for the user. It is important to take the right measures to avoid any unnecessary risks.
- **Risk of injury!** Beware of falling over the handlebar when only using the front brake. Hand brakes must always be used simultaneously.
- Always ride at a safe speed that allows you to react quickly to unexpected circumstances.



DANGER

- Always use lights and reflectors in low-light or dark conditions.
- Take into account that the battery performance and the range depends on many factors, including load, tire pressure, driving circumstances and/or operational temperature.

3.1.4 Safety information regarding maintenance and repairs



DANGER

- **Risk of injury or death!** Use only original parts. These parts have been tested and approved by the manufacturer. Under no circumstances should you try to replace the components such with components of another brand, at the risk of causing irreversible damages to your product. The manufacturer does not assume any responsibility for the adaptation of unapproved parts.



DANGER

- **Risk of injury or death!** The high voltage components on the motorcycle should only be serviced by specially trained technicians. Do not probe, tamper with, cut, or modify high voltage cables or wiring.
- **Risk of injury or death!** Alterations to the product and technical modifications are not permitted. Failure to do so may result in damage or severe or fatal injuries and it will invalidate the warranty.
- **Risk of injury!** Always turn the Stark VARG off completely before performing any cleaning or maintenance tasks.
- **Risk of damage!** Repairs shall only be done by a qualified and trained technician who is familiar with repairing similar products.

3.2 CALIFORNIA PROPOSITION 65 AND CALIFORNIA PERCHLORATE ADVISORY



WARNING

- **California Proposition 65**
Lithium-ion batteries and products that contain lithium-ion batteries can expose you to chemicals including cobalt lithium nickel oxide, and nickel, which are known to the State of California to cause cancer and birth defects or other reproductive harm
- **California Perchlorate Advisory**
Certain components of this motorcycle such as lithium batteries may contain perchlorate material. Special handling may apply for service or end of life disposal. For more information go to: dtsc.ca.gov ↗

3.3 POTENTIAL HEALTH CONSEQUENCES



DANGER

The Stark VARG is meant for motorcycling on a dirt bike track. Participation in all aspects of this activity should be considered a high-risk sports activity. Your participation in this activity is at your own risk and you shall take all necessary precautionary measures, including wearing all necessary protective clothing and gear, while riding the Stark VARG. The necessary protective clothing includes, but is not limited to, a helmet and protective boots, gloves, trousers and jacket. You agree to consult with your personal physician before participating in this high-risk activity.

4

ASSEMBLING
THE STARK VARG



DANGER

- **Risk of injury or death!** Use only original parts. These parts have been tested and approved by the manufacturer. Under no circumstances should you try to replace the components such with components of another brand, at the risk of causing irreversible damages to your product. The manufacturer does not assume any responsibility for the adaptation of unapproved parts.
- **Risk of injury or death!** The high voltage components on the motorcycle should only be serviced by specially trained technicians. Do not probe, tamper with, cut or modify high voltage cables or wiring.
- **Risk of injury or death!** Alterations to the product and technical modifications are not permitted. Failure to do so may result in damage or severe or fatal injuries and it will invalidate the warranty.
- Inspect the packaging and product for any damages, before assembling the product. If there are any damages, contact your (re)seller.

4.1

GETTING
STARTED

- 1 Open the top card box lids.
- 2 Take out the Stark phone.
- 3 Turn on Stark phone and follow the setup steps.
- 4 Scan the QR code on the box and follow the VARG assembly steps.

Required tools included.



Scan to watch the online instructional videos on how to unpack and assemble the Stark VARG

4.2

HOW TO UNPACK
AND ASSEMBLE
THE STARK VARG

- 1 Lift the cardboard box off the pallet with the motorcycle.



NOTICE

For this action two people are recommended.



2 Check if the delivery contains the following:

- a** Stark Future phone box, containing:
 - i Stark Future phone
 - ii USB cable
 - iii SIM card pin
- b** Stark Future toolbox
- c** Handlebar and controls
- d** Front wheel
- e** Front fender
- f** Stand
- g** Charger box, including:
 - i Foot pegs
 - ii Front wheel spacers
- h** Chassis and rear wheel



- 3 Loosen the strap holding the toolbox and remove it from the **fork**.



NOTICE

The contents of the toolbox will be needed throughout the rest of the assembly.



- 4 Remove the **front fender** from the **back wheel**.



- 5 Unscrew the **number plate** and remove it from the motorcycle.



NOTICE

Carefully release the brake line from the number plate.





- 6 Unscrew the four bolts inside the **docking station** and take it off the **handlebar clamps**.



- 7 Loosen the strap around the **seat** and the **handlebar**.



NOTICE

Beware parts are not falling on the floor as you loosen the strap.



- 8 Place the **handlebar** on the **handlebar clamps** with the **throttle** on the right side of the motorcycle. Place the **docking station** on top.



- 9 Tighten the four bolts inside the **docking station** to 30 Nm.



NOTICE

All torque settings stated in §[Torque setting table](#).

- 10 Loosen the **two bolts** of the **front brake**, put it around the **handlebar** next to the **throttle** and tighten it to 6 Nm.



NOTICE

All torque settings stated in §[Torque setting table](#).



- 11 If your bike is equipped with rear hand brake instead of rear foot brake, repeat the previous step to attach the **rear hand brake** on the left side of the handlebar.



NOTICE

All torque settings stated in §[Torque setting table](#).

- 12 Put the **cables** of the **docking station, throttle** and **control switch** through the **triple clamp** and connect them with the matching **plugs**.
- 13 Push the connected **plugs** into the slots of the **connectors box**.



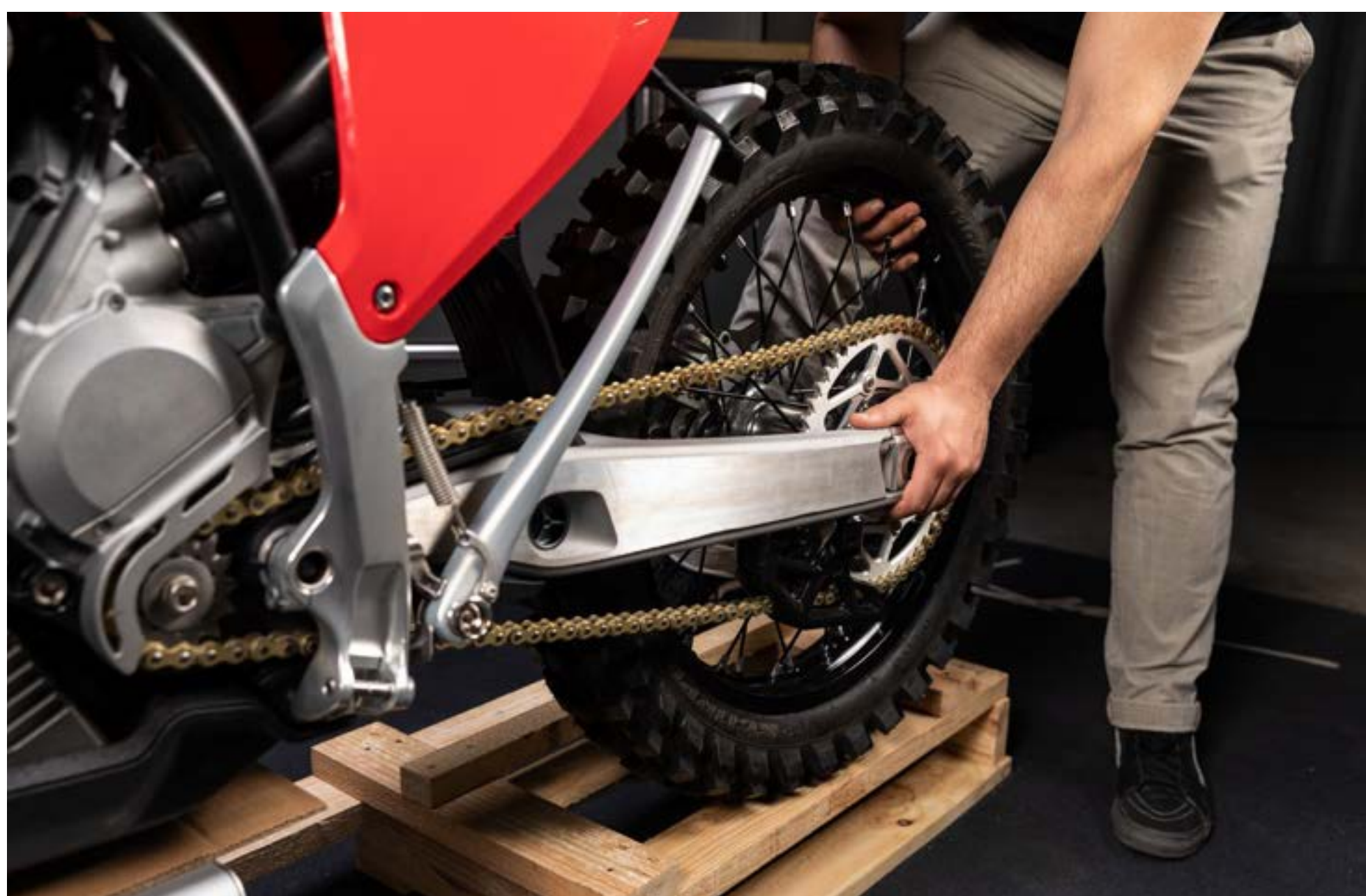
- 14 Install the connectors box lid and tighten the screws.



15 Loosen the four clamping straps around the **front wheel** and the bottom of the frame.



16 Lift the **back wheel** and place it on the edge of the pallet.



17 Remove the **stand frame** around the **fork** and the charger box underneath the **frame**.



18 Remove all the loose parts inside the **charger box** and slide it inside the **stand frame**.



19 Place the assembled **charger stand** next to the pallet at the level of the **skid plate**.



20 Unscrew the **wooden fork holder**.



NOTICE

For this action two people are recommended to ensure the motorcycle stability.

21 Lift and turn the front of the **frame** until the **skid plate** is resting on the **charger stand**.



22 Lift and turn the back of the **frame** until the skid plate is in the center of the charger stand and the motorcycle is evenly balanced.

23 Unscrew the four bolts at the bottom of the **fork** and take out the **front wheel axle**.



24 Place the **spacers** on each side of the **front wheel**.



25 Place the **front wheel** with the **spacers** in between the **fork protectors** and align the **shaft**.



NOTICE

Make sure the brake disk is placed in between the brake pads of the front brake caliper.



- 26** Put the **front wheel axle** through the **fork and hub** and tighten the **right fork clamp bolts**.
- 27** Tighten the front axle lock nut to 35 Nm.
- 28** Loosen right fork clamp bolts.
- 29** Spin the front wheel by hand and press the front brake lever a few times.
- 30** Tighten both fork clamp bolts to 15 Nm.



NOTICE

All torque settings stated in [§Torque setting table](#).

- 31** Press the supplied **washers** into the holes on the inside of the **front fender**.



- 32** Place the **front fender** in between the fork and align the notches in the **front fender** with the fastening points in the **frame**.
- 33** Attach the four supplied **bolts** from the inside of the **front fender** to the **frame**.



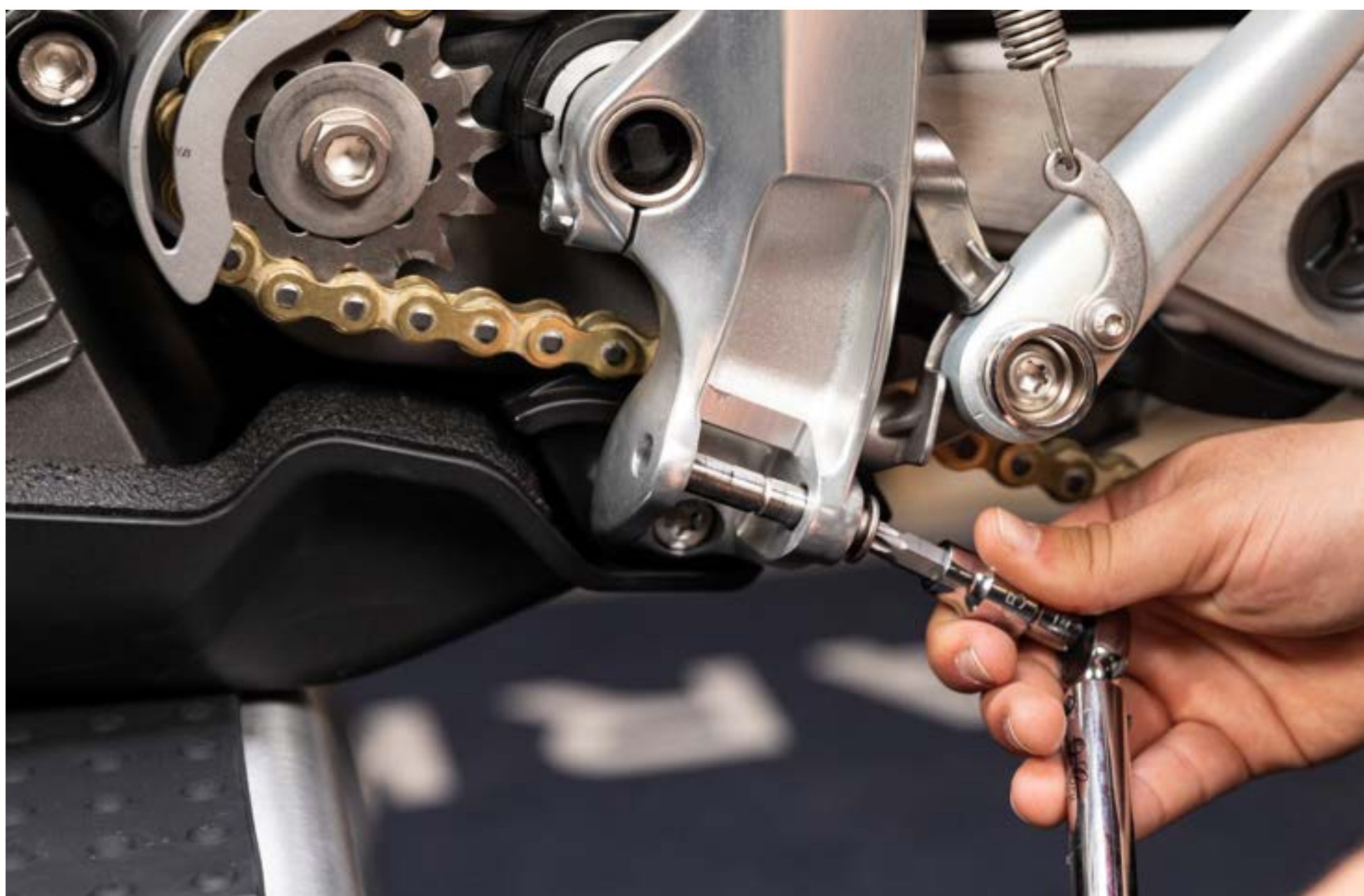
- 34** Put the **front brake line** through the cable clamps on the back of the **number plate**.



35 Screw the **number plate** to the triple clamp.



36 Loosen the **foot peg spindle** on the left side of the motorcycle and take it out.



37 Place the **left foot peg** inside the recess on the left side of the motorcycle and gently push the **foot peg** inside the recess to align the **shaft**.



NOTICE

The grip spikes on each foot peg should point upwards for a correct assembly.



- 38** Push the **foot peg spindle** back to lock **the left foot peg** and tighten to 20 Nm.
- 39** Repeat the process with the **right foot peg** on the right side of the motorcycle.

5

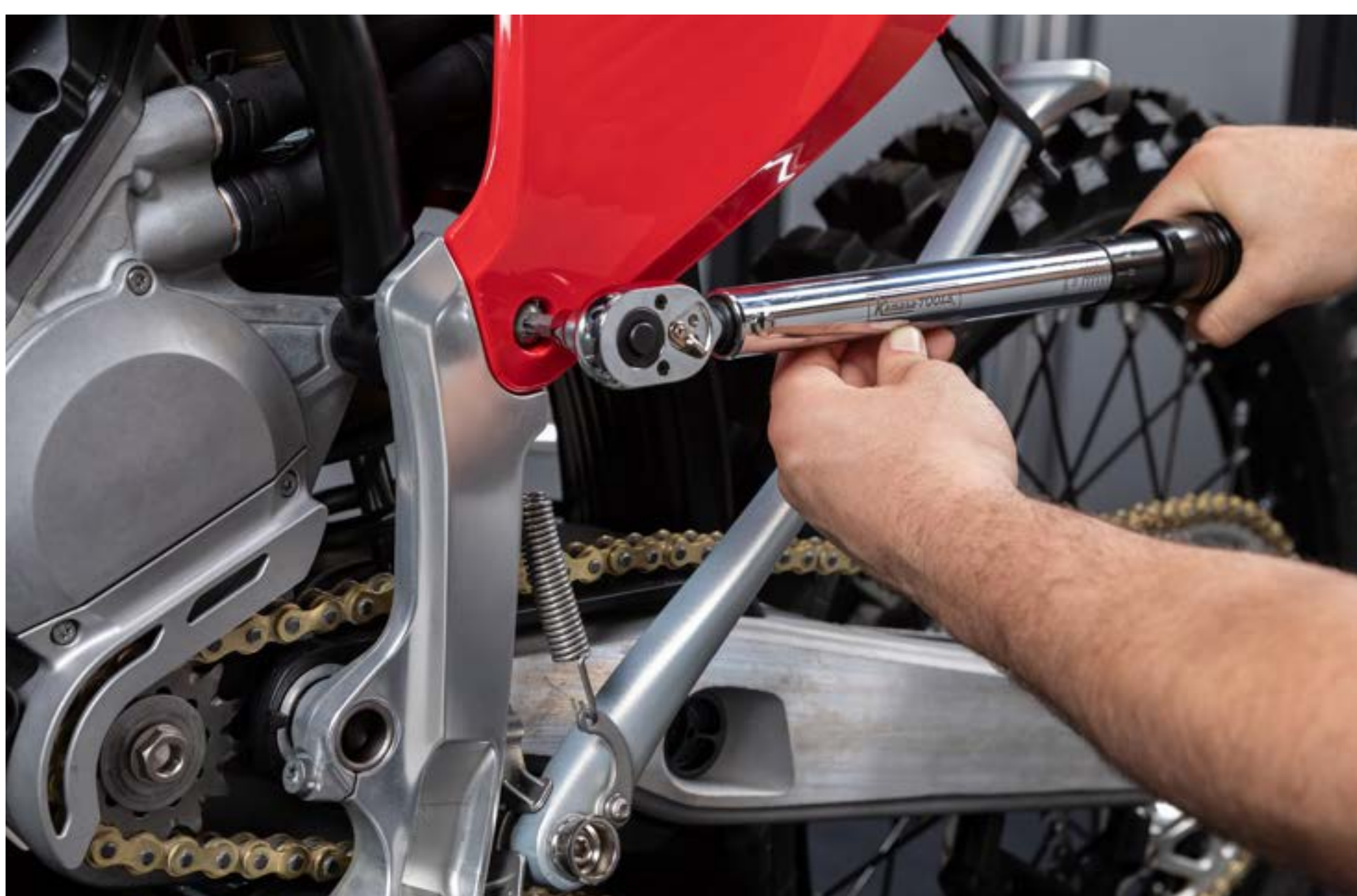
USING THE
STARK VARG

5.1 CONNECTING THE BATTERY

- 1 Remove the front spoiler bolts.



- 2 Remove the side spoiler bolts.



- 3 Remove the rear fender bolt.



4 Remove the spoiler assembly.



5 Remove both connectors caps.



- 6 Connect both sockets.
- 7 Please ensure the connector is all the way in and press the red clip to lock the connection.
- 8 Test if everything is working by turning on the bike.
- 9 Reinstall the spoiler assembly.



- 10 Tighten rear fender bolt to 8 Nm.
- 11 Tighten side spoiler bolts to 40 Nm.
- 12 Tighten front spoiler bolts to 5 Nm.



5.2 HOW TO CHARGE THE STARK VARG



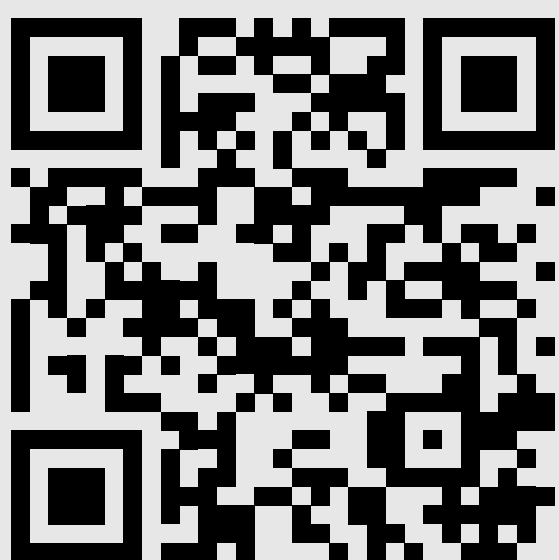
DANGER

- **Risk of injury or death!** It is formally prohibited to use the product if the product, or one of its components, hasn't been properly maintained or if it is used outside the scope of the intended use. It is forbidden to open the motor or the battery pack.
- **Risk of injury or death!** Do not use the product if the battery pack is damaged. When the battery pack is damaged, it may present a fire hazard.
- **Risk of explosion!** The battery and the charger must be dry before operation. Dry the battery and the charger with a soft cloth.
- **Risk of explosion!** Do not charge or use a battery that is damaged. If the battery is damaged, it must be discarded immediately.
- **Risk of damage!** After charging, the charger must be disconnected from the motorcycle charging port and the AC power socket immediately.
- Always charge and store the battery in a dry environment.
- Do not charge a battery at temperatures below 4°C (40°F).



DANGER

- Do not charge a battery that has been exposed to seawater.
- Do not charge the battery with charger cables that may be damaged.
- Do not charge the battery near flammable materials.
- Do not leave the battery unattended while charging.
- If the product appears to be bulging or shows other undesirable phenomena (e.g. excess noise), stop using the product immediately.
- Do not cover the product while charging the battery.
Charge the product in a well-ventilated environment.
- Batteries produce heat when charging and discharging. If the product becomes too hot to touch, switch the product off and unplug immediately.
- If the battery leaks avoid contact with skin and eyes. Rinse affected areas immediately with plenty of clean water, then consult a doctor.



Scan to watch the online instructional videos on how to charge the Stark VARG.

To charge the Stark VARG:

- 1 Make sure the Stark VARG is well balanced on the **skid plate**, on top of the **charger stand**.
- 2 Lift the lever on the **charging port cap**, twist it a quarter turn counter-clockwise and take it off.



- 3 Open the **charger box** and:
 - a Connect the **charging cable** to the **charging port** of the motorcycle.
 - b Connect the **power supply cable** to a suitable socket.



WARNING

Only connect the charger to a grounded socket with earth leakage protection that is connected in accordance with the legal guidelines.



- 4 Hold the **On/Off button** until the **light** on the **control switch** turns blue.

5.3 HOW TO REMOVE AND CHARGE THE STARK PHONE

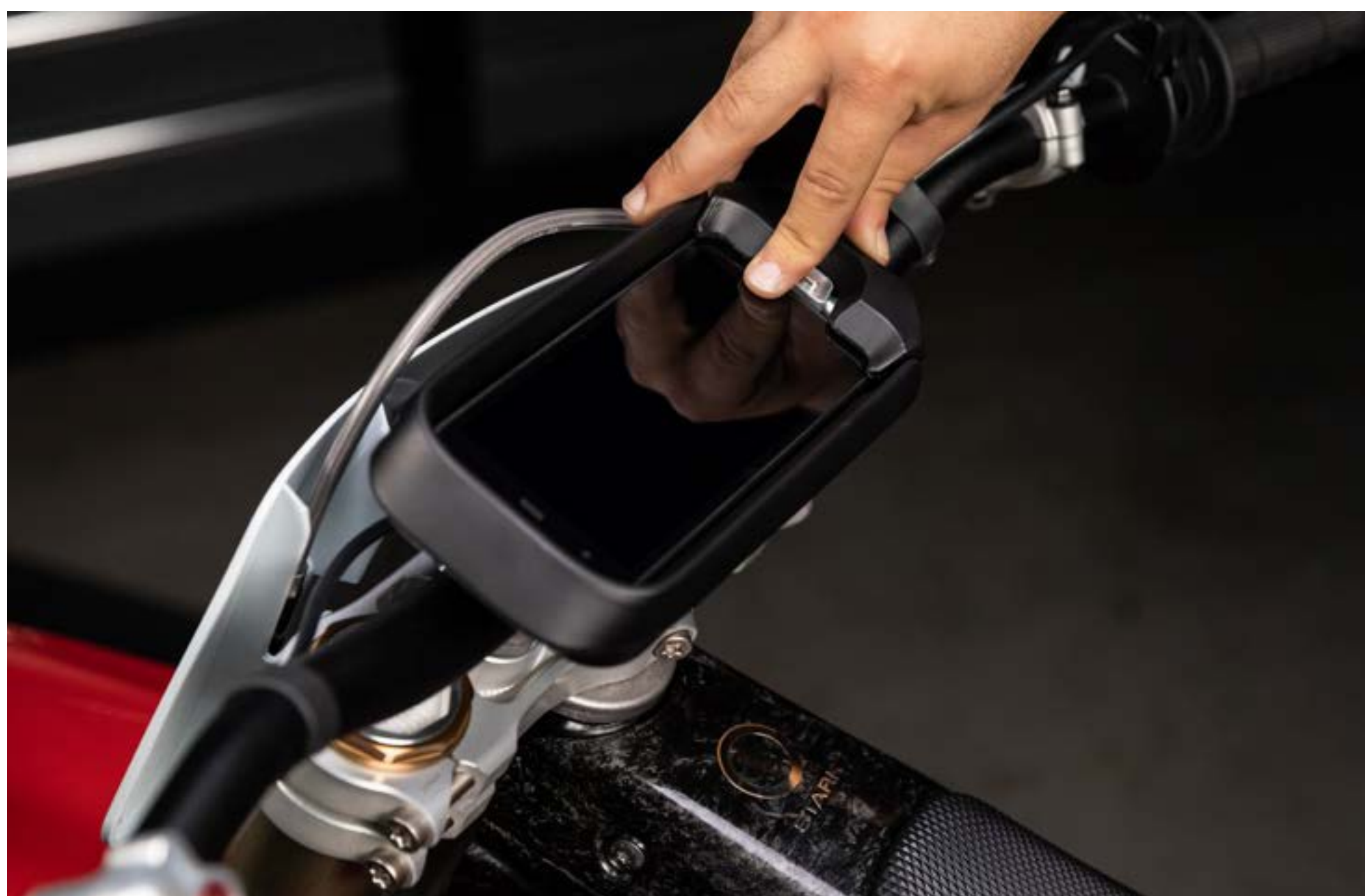


NOTICE

Only put the official Stark Future phone, which is supplied with the product, inside the docking station of the Stark VARG. Do not attempt to mount any other device. The Stark phone will charge wirelessly while mounted on the docking station.

To remove and externally charge the phone:

- 1 Press down the **docking station release lever** and take out the **phone**.



- 2 Connect the **Stark Future phone** with the supplied **charging cable** to a suitable power adapter and outlet.

5.4 HOW TO USE THE STARK FUTURE APP



DANGER

- **Risk of injury or death!** Always be vigilant when activating a new ride mode. Beware that the settings which can be adjusted in the Stark Future app influence the behavior of the motorcycle.



DANGER

- Use the in-app instructions to familiarize yourself with the use of the Stark Future app and its settings.

5.5 HOW TO PREPARE THE STARK VARG FOR A SAFE RIDE



DANGER

- **Risk of injury or death!** Do not use the product under the influence of alcohol, any medicine or illegal drugs that could alter your capacity to drive, or if you are not physically or mentally able to drive.
- **Risk of injury or death!** It is formally prohibited to use the product if the product, or one of its components, hasn't been properly maintained or if it is used outside the scope of the intended use. It is forbidden to open the motor or the battery pack.



DANGER

- **Risk of injury or death!** To reduce the risks of potential injury while using the product, it is necessary to be equipped with all compulsory protective clothing. For any kind of trip and for any person(s) that use the product, it is necessary to wear the correct protective clothing (helmet, boots, gloves, trousers and jacket equipped with protective means).
- **Risk of injury or death!** Only use protective clothing and helmet that is in perfect condition and complies with the legal requirements of the country of use.

Required tools:

- Multiple tools which can be found in the included toolbox.

5.5.1 Mechanical safety check table

Check for loose nuts and bolts:

- 1 Check for loose nuts and bolts.
- 2 Tighten any loose nuts and bolts in accordance with the value engraved on the part or the torque setting table (see [§Torque setting table](#)).