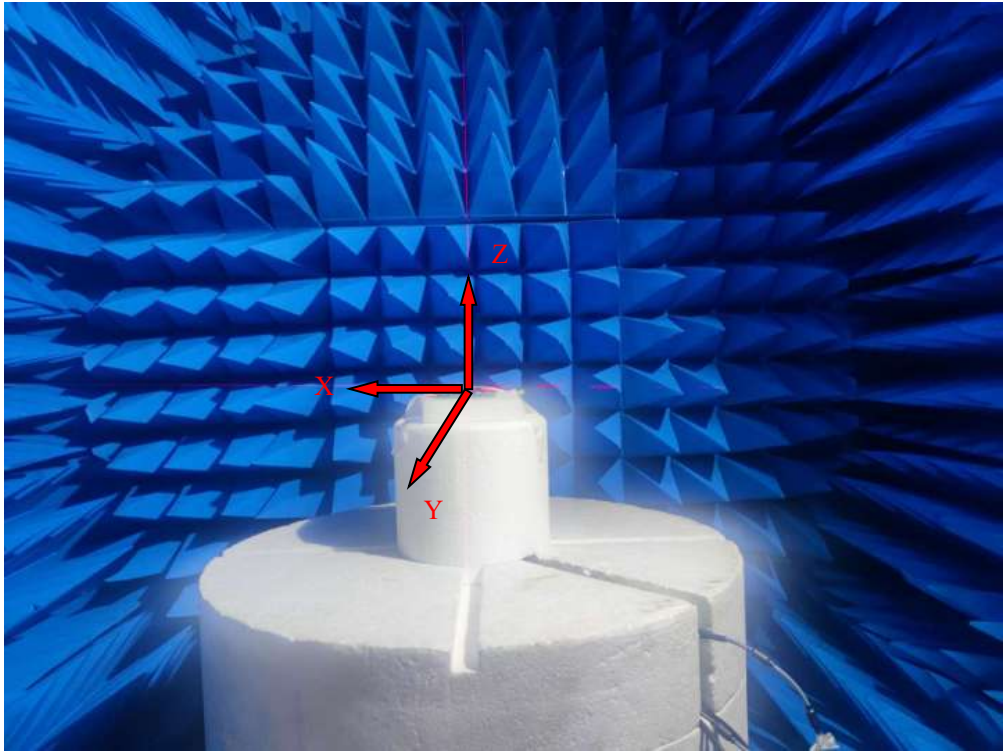


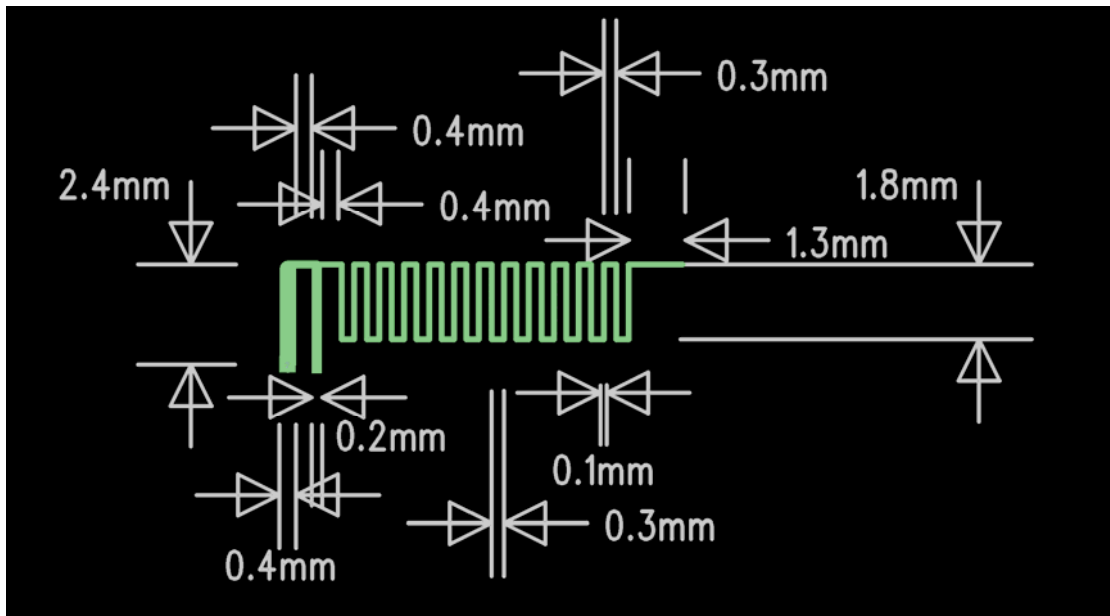
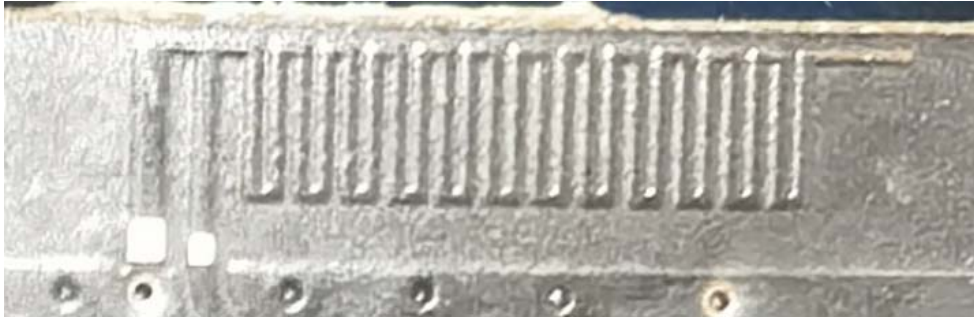
2.4G-2.48G 频段板载 PIFA 天线测试报告

SPECIFICATIONS	
Frequency (MHz)	2400-2480
Peak Gain (dBi)	-2.79
Average Gain (dBi)	>-4
VSWR	<3.2
Impedance (Ω)	50 Ω
Antenna Type	Plannar Inverted F Antenna on board
Polarization	Linear

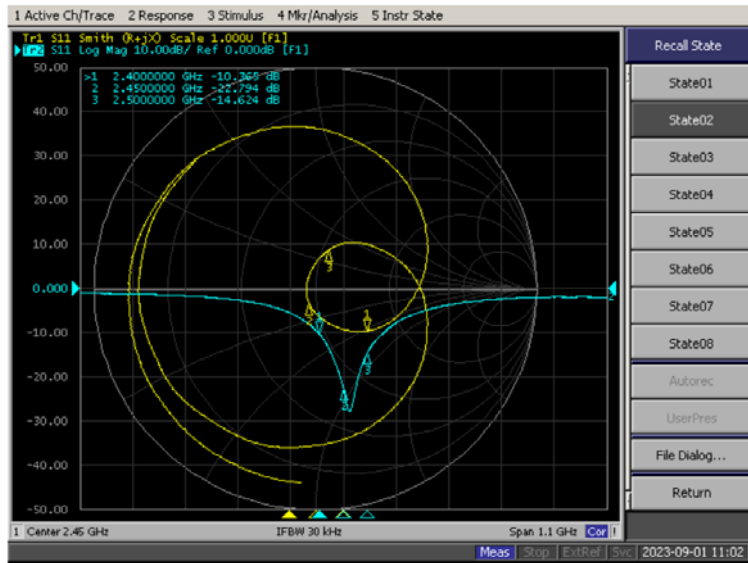
测试环境：中科国技暗室测试系统



天线实物及物理尺寸



天线无源 S 参数:



天线效率及增益

Freq(MHz)	Gain(dB)	Efficiency(dB)	Efficiency(%)
2400	-3.45	-7.57	17.48
2410	-3.25	-7.49	17.81
2420	-3.13	-7.43	18.09
2430	-2.98	-7.31	18.59
2440	-2.85	-7.21	19.02
2450	-2.79	-7.16	19.22
2460	-2.79	-7.14	19.31
2470	-2.85	-7.17	19.20
2480	-2.92	-7.23	18.94
2490	-3.05	-7.31	18.56
2500	-3.12	-7.40	18.21

天线辐射场型

