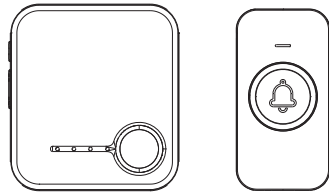


Fovksuc**Wireless Doorbell Kit
User Manual**

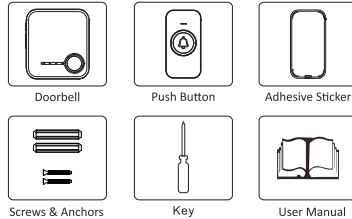
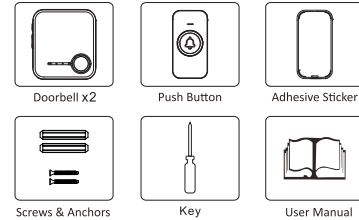
□ U1-W □ U1-B

**Product Features**

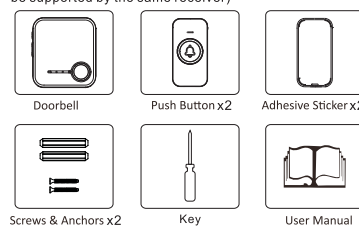
- Modern and stylish design
- 600 feet operating range(Over 1000 feet in open area)
- 60 selectable music/chime
- 5-level adjustable volume(Minimum to mute)
- Easy to install and use
- Bionic comfortable button
- Easy mix and match with more receivers and transmitter
- Low power consumption
- Memory function
- Music/chime scroll through function

Content**1 Transmitter+1 Receiver**

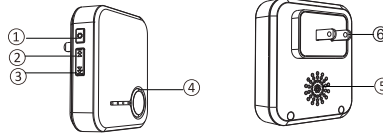
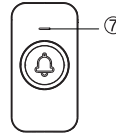
Two or more transmitters pairing (up to 20 transmitters can be supported by the same receiver)

**1 Transmitter+2 Receiver****2 Transmitter+1 Receiver**

Two or more transmitters pairing (up to 20 transmitters can be supported by the same receiver)

**What You Should Know Before Installation**

- 1.Test the operating range you desire. Choose an electric outlet at the height of 3.3 feet at least and plug in the receiver and take the button outside the door to test if it can work well within the range you have chosen.
- 2.Set a desired music (different or same one) for transmitters before installation. For music setting, see Operating Instructions.Doorbells have been paired and set to a default chime (Ding Dong) before leaving factory.
- 3.Please do not install transmitter on metal doors since it is hard for the signal to transmit.
- 4.Please take out the battery insulating strip before using. (As picture ①)
- 5.Ensure all surfaces are clean by wiping the installation area with a clean cloth. Please note that the sticker will have poor adhesion if you attach it to a dirty or uneven surface. Sunlight or rain will also affect the adhesion over a longer period of time.

**Product Structure Diagram****AC Powered Receiver****Waterproof Transmitter**

- 1.Volume/SET button
- 2.Previous button
- 3.Next button
- 4.LED light
- 5.Speaker
- 6.Plug
- 7.LED on the push button (Transmitter)

Set UP and Operation

Press the push button to test whether it is paired with the doorbell.The doorbell LED indicator flashes and ring.If it does not,see"Connect a Push Button" on page 5.

1.Adjust the Volume

There are 5 levels of volume for choosing.Find the Volume Control button() on left side of receiver.press this button repeatedly to get desired volume level,Minimum to mute.

2.Music/Chimes Selection

There are 60 choices of music/chimes.press short this button() on receiver to cycle through the different music/chimes.

Long press this button() or button() On receiver to Play The First 2 Seconds of Each Music /Chime.If you like the current music/Chime, just press this () or() button.

Note:doorbell has a smart memory function that can remember your last melody and volume level

3.Pairing Transmitters and Setting Music/Chime

You can connect up to 20 Transmitters to your doorbell.

① Plug in the receiver, press the or of the receiver to Select Music/Chime.

② Pressing and holding the () on the receiver for 5s,the receiver will LED indicator on,which means receiver get into pairing mode.

③ Press push button,the receiver will the bell rings with LED indicator flashes,is pairing ok

Note: pair and set only one transmitter at a time to avoid interference and ensure successful operation. It 10s without any operation, the doorbell will exit the pairing mode.

After selecting the Music/Chime, press the transmitter will automatically switch to the current ringtone.For the last paired transmitter.

4.For Pairing Additional Transmitters and receivers

Just repeat step 3①-3②-3③ for each additional transmitter or receiver.(Choose a different Music/Chime for the 2nd transmitter to distinguish front and rear doors)

Note:This method is suitable for multiple transmitters or multiple receiver pairing

5.Reset (Clearing out Settings)

Hold down volume button() and plug it into an outlet,After playing the beep twice and LED indicator on,all settings will return to factory defaults.

Installation

Choose a location that is not near a heat source or on something that moves (like a door). For non-mounting locations, choose a place where the doorbell will be easy to see and hear.

1.For Receiver:

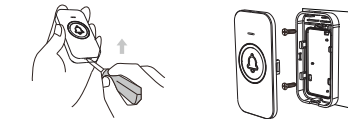
Plug-in receiver: Just plug receiver into standard outlet in room.

2.For Push button:**IMPORTANT:**

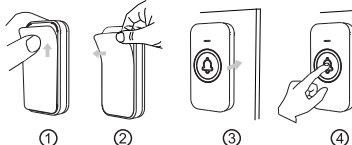
Before installation, please test if the operating range you choose is working and set music if needed.

Before you drill any hole in the wall, please make sure there are not cables or pipes. To install you will require a drill and cross-head-ed screwdriver.

① Open the Transmitter with screw driver and separate the front cover from the back cover. Penetrate the two standby holes at the back cover with two screws. Then fix the screws on the wall at suitable height.



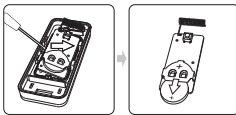
② Or you can stick the Transmitter with the double-sided adhesive tape.



If you are not mounting the push button to the wall, place it where you want it.

Battery Replacement of Push Button

Open the battery cover and install the CR2032 battery.



Note:When you replace the battery with a new one, be carefull to put the positive terminal of the battery facing upwards.

Specifications

| | Doorbell | Push Button |
|----------------------------------|--------------------|---------------|
| Operating Temperature | -4°F to 140°F | -4°F to 140°F |
| Radio Frequency | 433 MHz | 433 MHz |
| Range (open field) | 1,000 ft | 1,000 ft |
| Sound Level (typical) | 0-110 dB | |
| Battery Type | Plug-in AC110-250V | CR2032 |
| Battery Life (5 activations/day) | Up to 5 years | Up to 3 years |
| Rain Proof | N/A | IP55 |
| Internal Sounds | 60 Melody | N/A |
| Type of Bulb | LED/Blue | LED/Blue |

Chimes List

1. Ding-dong, Ding-dong
2. Ding-dong, Ding-dong
3. Ding-dong, Ding-dong
4. Corsica Doorbell
5. Ding-dong
6. Ding-dong Chime
7. Hello Welcome (English)
8. Westminster Chimes1
9. Westminster Chimes2
10. Big ben electronic doorbell
- 11-40. NEWAGE-01~NEWAGE-030
41. Classical organ
42. Morning
43. Dingdong merrily on high
44. Waltz of the flowers
45. For Alice
46. The William tell overture
47. The cuckoo waltzes
48. Minuet in G
49. Happy birthday
50. Fantaisie Impromptu
51. Yesterday Once More
52. Clarinet Polka
53. Russe Dance
54. Souvenirs Denfance
55. Jasmine Flower
56. Waltzes_Op. 34 No. 2
57. Hungarian Dance
58. Spring Song
59. Accordion Tango
60. Alarm Sound Effect

Commom Problems and Troubleshooting

| Receiver suddenly can't get signal from transmitter and doesn't ring | |
|--|---|
| Reason | Solution |
| Low-power battery in transmitter.The less power in transmitter, the shorter range is. | Replace with a new battery. |
| Reset the receiver by accident so that transmitter is not paired with receiver any more. | Re-pair receiver with transmitter following the Operation Instructions. |
| There's rust on the battery contacts or button area on PCB board of transmitter. | Remove the rust to see if it can re-work |
| Receiver keeps ringing continuously and LED indicator of transmitter stays on. | |
| Raindrops have gone inside transmitter,which causes the short circuit and let transmitter keep transmitting signals. | Remove the battery and PCB board of transmitter and then dry them with a hair dryer. Change the install location of transmitter if necessary. |

Customer Service

We hope you never have the need,but if you do, our service is friendly and hassle-free



30-day
money-back
guarantee



18-month
warranty



Lifetime
user support

- ✉ : customerservice@fovksuc.com
- 🌐 : www.fovksuc.shop
- 📞 : www.fovksuc.com

This device complies with Part 15 of the FCC Rules. Operation is subject to the following two conditions: (1) this device may not cause harmful interference, and (2) this device must accept any interference received, including interference that may cause undesired operation

NOTE: This equipment has been tested and found to comply with the limits for a Class B digital device, pursuant to Part 15 of the FCC Rules. These limits are designed to provide reasonable protection against harmful interference in a residential installation. This equipment generates, uses and can radiate radio frequency energy and, if not installed and used in accordance with the instructions, may cause harmful interference to radio communications. However, there is no guarantee that interference will not occur in a particular installation.

If this equipment does cause harmful interference to radio or television reception, which can be determined by turning the equipment off and on, the user is encouraged to try to correct the interference by one or more of the following measures:

- Reorient or relocate the receiving antenna.
- Increase the separation between the equipment and receiver.
- Connect the equipment into an outlet on a circuit different from that to which the receiver is connected.
- Consult the dealer or an experienced radio/TV technician for help.

Warning: changes or modifications not expressly approved by the party responsible for compliance could void the user's authority to operate the equipment

The devices has been evaluated to meet general RF exposure requirement , the device can be used in portable exposure condition without restriction