

1. Antenna Description:

Antenna type	External antenna
Model	GTC129A-H01E-5.8G WIFI
Frequency range	5745-5825MHz
Manufacturer	Guangzhou Daisi Electronics Technology Ltd.
ANT Peak Gain	2.50 dBi

2. Antenna Photo:

Length :115.94mm
Width:21.47mm



3. Test Equipment & Conditions

3.1 Test instrument

VSWR is tested using Agilent E5071B connected to a hand mechanism, and the status is free space.

3.2 Test environment and methods

Dark room specifications: ETS-743

TD-SCDMA test equipment: StarPoint SP6010/Agilent 8960

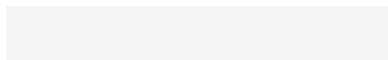
LTE-TDD/FDD-SCDMA test equipment: StarPoint SP8011/CMW500

WCDMA/GSM/CDMA test equipment: Agilent 8960

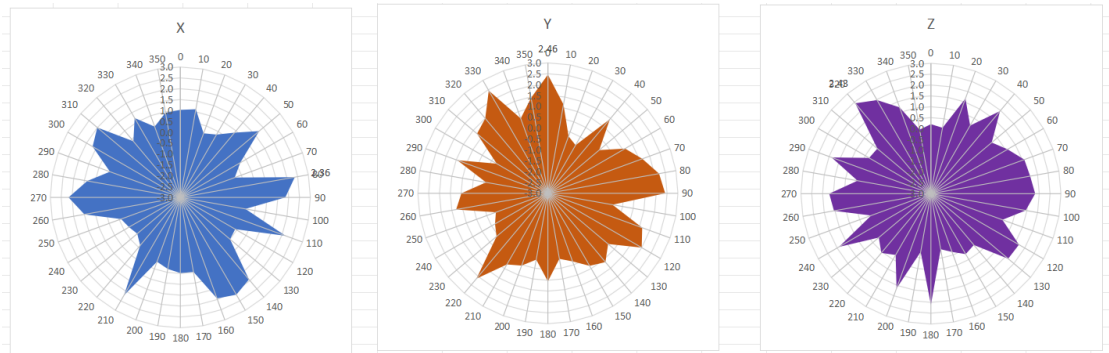
Passive efficiency testing equipment: Agilent Technologies E5071B



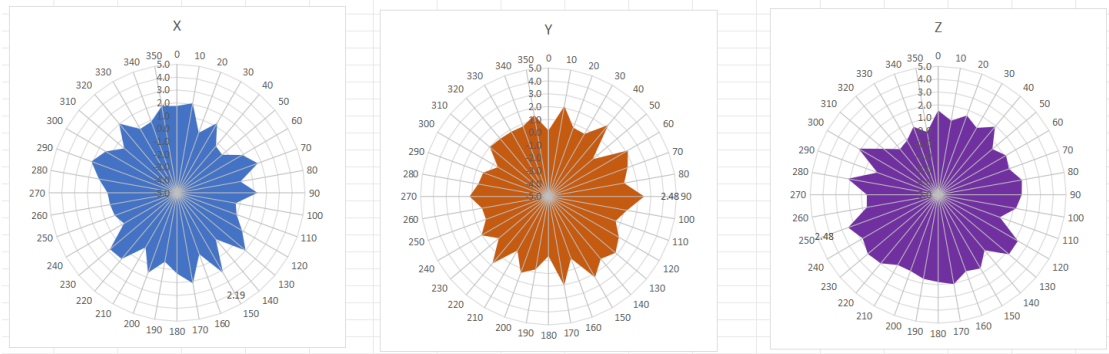
4 . Antenna Radiation Pattern



5745MHz



5785MHz



5825MHz

