

# Anona Lucio Security Camera User Manual



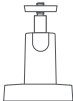
## Package contents

---

Read this manual carefully before use, and retain it for future reference.



Camera



Camera bracket



Charging cable



Mounting sticker



Security sticker



Wall anchors and screws

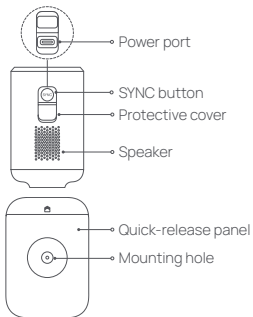
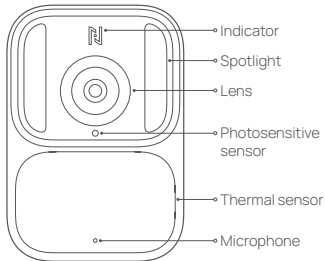


User manual

Note: Illustrations of product, accessories, and user interface in the user manual are for reference purposes only. Actual product and functions may vary due to product enhancements.

## Product overview

---



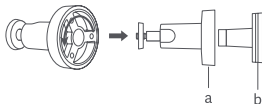
## Installing the camera

---

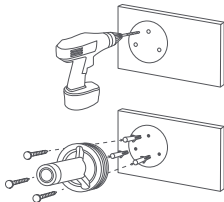
1. Rotate counterclockwise to disassemble the camera bracket.

a. Locking cap

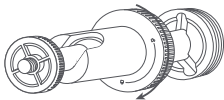
b. Base



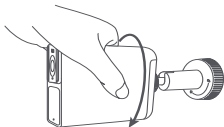
2. Drill holes based on the mounting sticker (drill bit size: 6 mm), insert the wall anchors, and fix the base to the wall with screws.



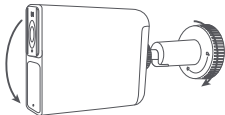
3. Fix the locking cap onto the base.



4. Hold the camera by hand and screw it to the bracket.



5. Loosen the locking cap, hold the camera by hand and adjust the angle. After adjustment, tighten the locking cap.



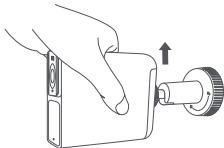
Note: Please install the camera with its power port facing downwards. When the power port is not used, please cover it with the protective cover to prevent water ingress.

## Disassembling/assembling the camera

---

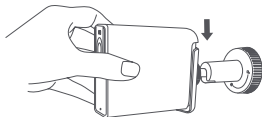
### Disassembling

Hold the camera by hand and lift it up with force; the camera will detach from the quick-release panel.



### Assembling

1. Hold the camera by hand and insert it into the quick-release panel.
2. Slide the camera down until you hear a click sound, the camera is attached to the quick-release panel.



## SYNC button functions

---

Device status	Operation	Function
Turned off	Press and hold for about 3 seconds	Turn on the device
Turned on	Press 5 times in a row	Turn off the device
	Press and hold for about 5 seconds	Reset the device

Note: If the camera malfunctions, press and hold the SYNC button for about 12 seconds to restart the device.

## Indicator status

---

Device status	Indicator status
Starting up	Blinking green
Awaiting connection	Blinking orange
Connecting Wi-Fi	Blinking green
Connected successfully	Solid green
OTA updating	Blinking green
Charging	Breathing green
Fully charged	Off



## Binding the camera

---

1. Scan the QR code to download and install the Anona Security app. Or search for "Anona Security" in the app store to download and install it.
2. Press and hold the SYNC button for about 3 seconds to turn on the camera. Then press and hold the SYNC button until the indicator blinks orange.
3. Open the homepage of the Anona Security app and tap "Add device". In the Bluetooth scanning result list, tap the camera's device ID and then follow the on-screen instructions to complete the binding process.



### Notes:

- Your mobile phone must be running Android 8.0, iOS 12.0, or a later version.
- To find the device ID, detach the camera from the quick-release panel and locate it on the product label.
- Before starting the binding process, ensure that your phone is connected to the internet and Bluetooth is enabled.
- This product only supports 2.4GHz Wi-Fi networks, 5GHz Wi-Fi networks are not supported.

## Precautions

---

- Please select a suitable installation position for the camera. It is recommended to be 2–3 m above the ground and there are no buildings or trees around the mounting wall surface.
- The operating temperature range for the camera is -20°C to 55°C. Do not use the camera at a too high or too low temperature.
- Do not use the camera in extremely humid environments or locations that may cause water ingress to avoid malfunctions.
- Do not expose the camera lens to direct sunlight, as this may damage the camera's photosensitive components.
- Make sure that the camera is installed in an area with a strong Wi-Fi signal. Do not install the camera near microwave ovens, and other objects or places that affect its Wi-Fi signal.
- Keep the camera away from strong magnetic environments. Do not subject the camera to severe shock or vibration.
- When charging with a power adapter, use the included charging cable and a qualified power adapter (with an output of 5V  $\overline{\text{---}}$  2A) that meets safety standards. Charging should be carried out indoors in a well-ventilated environment.
- When charging with a solar panel, only use Anona solar panel and do not use solar panels

from any other brands.


- This camera is equipped with a built-in battery that cannot be removed or replaced. Do not disassemble or modify the battery by yourself.

#### Warnings:

- Replacement of a battery with an incorrect type can defeat a safeguard.
- Disposal of a battery into fire or a hot oven, or mechanically crushing or cutting a battery can result in an explosion.
- Leaving a battery in an extremely high temperature environment can result in an explosion or the leakage of flammable liquid or gas.
- A battery subjected to extremely low air pressure may result in an explosion or the leakage of flammable liquid or gas.

## Specifications

---

Product	Security Camera	Aperture	f/1.6
Model	HM1006-02	Wireless connectivity	Wi-Fi IEEE 802.11b/g/n/ax 2.4GHz, BLE4.2
Input	5V  2A		
Battery capacity	10000 mAh	Operating temperature	-20°C to 55°C
IP rating	IP67	Item dimensions	84 × 58 × 96.5mm
Video codec	H.265/H.264	Wireless operation frequency	2400–2483.5MHz
Resolution	2560 × 1440 (4MP)	Wi-Fi maximum output	< 20dBm
Lens viewing angle	138°	Compatible with	Android 8.0 & iOS 12.0 or above

## **FCC Caution.**

### 15.19 Labelling requirements.

This device complies with part 15 of the FCC Rules. Operation is subject to the following two conditions: (1) This device may not cause harmful interference, and (2) this device must accept any interference received, including interference that may cause undesired operation.

### 15.21 Information to user.

Any Changes or modifications not expressly approved by the party responsible for compliance could void the user's authority to operate the equipment.

### 15.105 Information to the user.

Note: This equipment has been tested and found to comply with the limits for a Class B digital device, pursuant to part 15 of the FCC Rules. These limits are designed to provide reasonable protection against harmful interference in a residential installation. This equipment generates uses and can radiate radio frequency energy and, if not installed and used in accordance with the instructions, may cause harmful interference to radio communications. However, there is no guarantee that interference will not occur in a particular installation. If this equipment does cause harmful interference to radio or television reception, which can be determined by turning the equipment off and on, the user is encouraged to try to correct the interference by one or more of the following measures:

- Reorient or relocate the receiving antenna.

- Increase the separation between the equipment and receiver.
- Connect the equipment into an outlet on a circuit different from that to which the receiver is connected.
- Consult the dealer or an experienced radio/TV technician for help.

RF warning for Mobile device:

This equipment complies with FCC radiation exposure limits set forth for an uncontrolled environment. This equipment should be installed and operated with minimum distance 20cm between the radiator & your body.

FCC ID: 2BB7K-1006

### **ISED compliance statement**

This device contains licence-exempt transmitter(s)/receiver(s) that comply with Innovation, Science and Economic Development Canada's licence-exempt RSS(s). Operation is subject to the following two conditions:

- (1) This device may not cause interference.
- (2) This device must accept any interference, including interference that may cause undesired operation of the device.

L'émetteur/récepteur exempt de licence contenu dans le présent appareil est conforme aux CNR d'Innovation, Sciences et Développement économique Canada applicables aux appareils radio exempts de licence. L'exploitation est autorisée aux deux conditions suivantes :

- (1) L'appareil ne doit pas produire de brouillage;
- (2) L'appareil doit accepter tout brouillage radioélectrique subi, même si le brouillage est susceptible d'en compromettre le fonctionnement."

### **ISED Radiation Exposure statement**

This equipment complies with IC RSS-102 radiation exposure limits set forth for an uncontrolled environment. This equipment should be installed and operated with minimum distance 20 cm between the radiator and your body.

Cet équipement est conforme aux limites d'exposition aux radiations IC CNR-102 établies pour un environnement non contrôlé. Cet équipement doit être installé et utilisé avec une distance minimale de 20 cm entre le radiateur et votre corps.

IC: 30992-1006

CAN ICES-003 (B) / NMB-003 (B)

V1.0-20240704

Service: [help@anonasecurity.com](mailto:help@anonasecurity.com)

For further information, please go to [www.anonasecurity.com](http://www.anonasecurity.com)

Manufacturer: Anona Security Technology Limited

Address: 8 The Green, Ste A Dover DE 19901, America



Please use the LPS adapter.