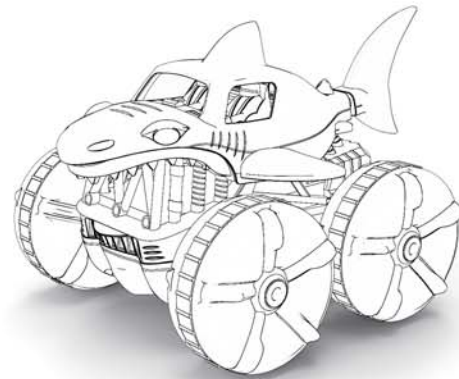


ifollower

2.4GHz Amphibious Stunt RC Car

INSTRUCTION MANUAL

Model No.:989-222



Warning:

1. Please read this instruction manual carefully before installing & operating this car.
2. Children aged under 3 need adults' supervision while playing.

1

Issue	Solution
How do I recognize if the car is working?	After switch on, the car is working when the light is flashing.
How can I know if the signal pairing is successful or not?	Indicator light on the remote controller will flash when it is switched on, and then it will be turned off once paired successfully after your car is turned on.
The car runs slowly	1. Replace or fully recharge the battery 2. Check if the car is geared properly or the gears are dirty
The car doesn't work	1. Make sure all switches are turned on 2. Check if all batteries are fully powered. (including the batteries of the remote controller and the car) 3. Check if there are damages of the car or remote controller
The car only turns and cannot move forward or backward	1. Recharge the battery of the car or replace the batteries of the remote controller. 2. Push the upward or downward button to check if the indicator light flashes. 3. Re-pair the signal by re-switching them on. 4. Check if the motor is damaged.
The car only move forward or backward cannot turn.	1. Check if the car or remote controller is damaged.

Battery information

INPUT: 5V 2A
OUTPUT: 3.7V 0.5A
Battery: 1 x 7.4V 500mAh lithium ion
Rechargeable Battery Pack
Requires: 1 x 7.4V 500mAh lithium ion
Rechargeable Battery Pack

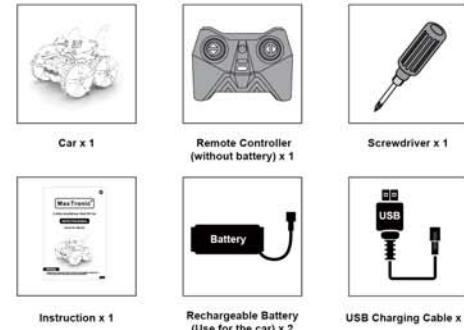
Battery requirement for controller:
Batteries: 2x 1.5V AA
Requires 2x 1.5V AA size batteries (not included).



The Waste Electrical and Electronic Equipment Directive (WEEE Directive) is the European community directive on waste electrical and electronic equipment, which became European law in February 2003. The main purpose of this directive is to prevent electronic waste. Recycling and other forms of waste recovery should be encouraged to reduce waste. The symbol (trash can) on the product and on the packing means that used electrical and electronic products should not be disposed

4

Package Contents

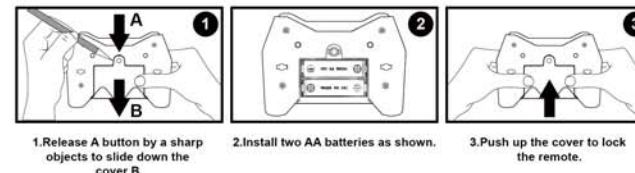


How to charge the car



1. Full recharge the battery with the USB charging cable provided.
2. Insert the rechargeable battery into the car case.
3. Close the battery cover tightly.

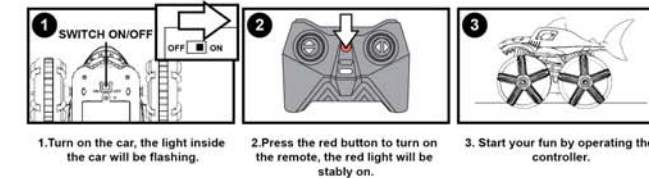
How to install batteries into the remote



1. Release A button by a sharp objects to slide down the cover B.
2. Install two AA batteries as shown.
3. Push up the cover to lock the remote.

2

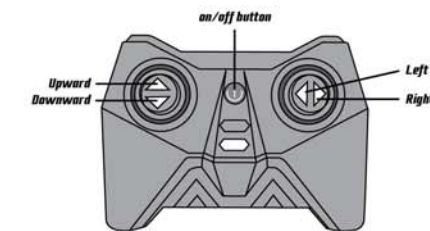
How to connect the controller



Note:

1. Please make sure your car is full recharged and the controller battery is installed.
2. Red button on - remote on / signal paired.
Red button flashing - signal pair failure
Red button off - remote off / battery ran out.

Operation Direction



Control Operation	Car Function
Upward	Forward
Downward	Backward
Upward + Left/Right	Turn left/Right
Left/Right Only	360° Rotating

Troubleshooting

3

After-Sales Service / Kundendienst / Service Clients /
Assistenza clienti / Servicio al Clientet

ifollower

www.myifollower.com
service@myifollower.com (for US CA)
serviceeu@myifollower.com (for DE FR IT ES UK)

EC REP Libelle Consulting GmbH, Hoferstasse 9B, 71636 Ludwigsburg, Germany	UK REP EVATOULTING LTD Suite 11, First Floor, Moy Road Business Centre, Taffs Well, Cardiff, Wales, CF15 7QR
--	--



MADE IN CHINA

of with general household waste. It is your responsibility to dispose of all your electronic or electrical waste at designated collection points. Disposing of this product correctly will help to save valuable resources and it is a significant contribution to protect our environment as well as human health. For more information about the correct disposal of electrical and electronic equipment, recycling and collection points please contact your local authorities, waste management companies, your retailer or the manufacturer of this device.

Batteries are marked with the symbol of a crossed out bin. This symbol indicates that empty batteries or accumulators which can no longer be charged should not be disposed of with household waste. Waste batteries may contain harmful substances that can cause damage to health and to the environment. Please use the return and collection systems available in your country for the disposal of the waste batteries

this device complies with part 15 of the FCC Rules. Operation is subject to the following two conditions: (1) this device may not cause harmful interference, and (2) this device must accept any interference received, including interference that may cause undesired operation. Any changes or modifications not expressly approved by the party responsible for compliance could void the user's authority to operate the equipment.

NOTE: This equipment has been tested and found to comply with the limits for a Class B digital device, pursuant to Part 15 of the FCC Rules. These limits are designed to provide reasonable protection against harmful interference in a residential installation. This equipment generates, uses and can radiate radio frequency energy and, if not installed and used in accordance with the instructions, may cause harmful interference to radio communications. However, there is no guarantee that interference will not occur in a particular installation. If this equipment does cause harmful interference to radio or television reception, which can be determined by turning the equipment off and on, the user is encouraged to try to correct the interference by one or more of the following measures:

- Reorient or relocate the receiving antenna.
- Increase the separation between the equipment and receiver.
- Connect the equipment into an outlet on a circuit different from that to which the receiver is connected.
- Consult the dealer or an experienced radio/TV technician for help.

The device has been evaluated to meet general RF exposure requirement. The device can be used in portable exposure condition without restriction

5

6