

Appendix A

System Check 750 MHz Head
System Check 835 MHz Head
System Check 1750 MHz Head
System Check 1950 MHz Head
System Check 2600 MHz Head

Summary

Dipole	Frequency [MHz]	TSL	Power [dBm]	Dev. 1g [%]	Dev. 10g [%]	Dev. Peak [%]	Iso. Error [%]
D750V3 – SN1231	750.0	HSL	20.0	2.6	2.3	17.5	–6.5

Exposure Conditions

Phantom Section, TSL	Test Distance [mm]	Band	Group, UID	Frequency [MHz], Channel Number	Conversion Factor	TSL Conductivity [S/m]	TSL Permittivity
Flat, HSL	15		CW, 0--	750.000, 0	9.65	0.897	42.7

Hardware Setup

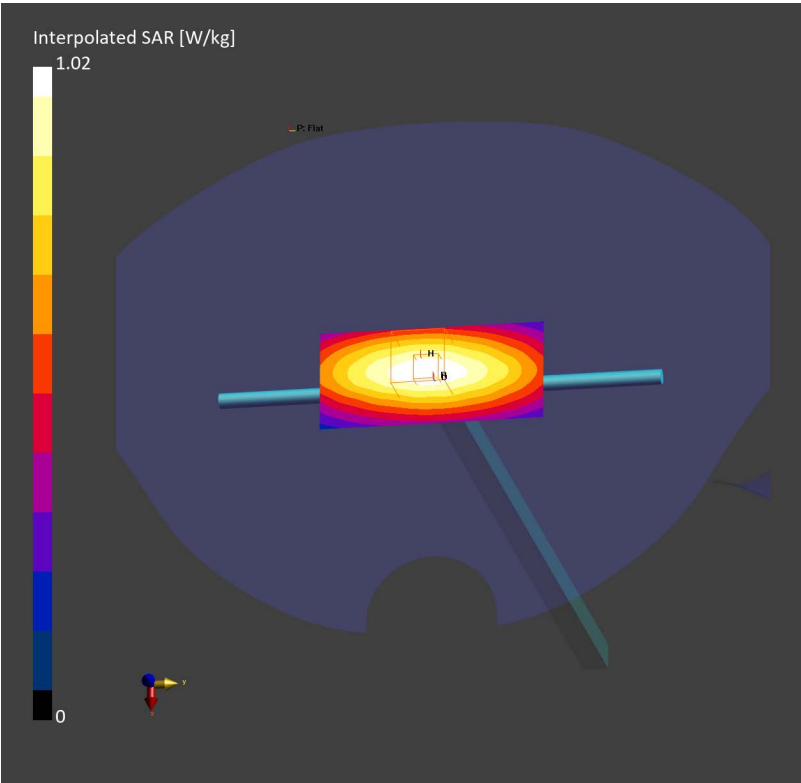
Phantom	TSL	Probe, Calibration Date	DAE, Calibration Date
Twin-SAM V8.0 (30deg probe tilt) – 2173	HSL750	EX3DV4 – SN7812, 2024–06–25	DAE4ip Sn1847, 2024–12–31

Scans Setup

	Area Scan	Zoom Scan
Grid Extents [mm]	40.0 x 90.0	32.0 x 32.0 x 30.0
Grid Steps [mm]	10.0 x 15.0	6.0 x 6.0 x 1.5
Sensor Surface [mm]	3.0	1.4
Graded Grid	N/A	Yes
Grading Ratio	N/A	1.5
MAIA	N/A	N/A
Surface Detection	VMS + 6p	VMS + 6p
Scan Method	Measured	Measured

Measurement Results

	Area Scan	Zoom Scan
Date	2025–03–27, 15:07	2025–03–27, 15:13
psSAR1g [W/Kg]	0.884	0.889
psSAR10g [W/Kg]	0.590	0.580
Power Drift [dB]	–0.01	–0.01
Power Scaling	Disabled	Disabled
Scaling Factor [dB]		
TSL Correction	No correction	No correction



Summary

Dipole	Frequency [MHz]	TSL	Power [dBm]	Dev. 1g [%]	Dev. 10g [%]	Dev. Peak [%]	Iso. Error [%]
D835V2 – SN4d302	835.0	HSL	20.0	0.4	–1.1	13.3	–2.5

Exposure Conditions

Phantom Section, TSL	Test Distance [mm]	Band	Group, UID	Frequency [MHz], Channel Number	Conversion Factor	TSL Conductivity [S/m]	TSL Permittivity
Flat, HSL	15		CW, 0--	835.000, 0	9.35	0.882	42.0

Hardware Setup

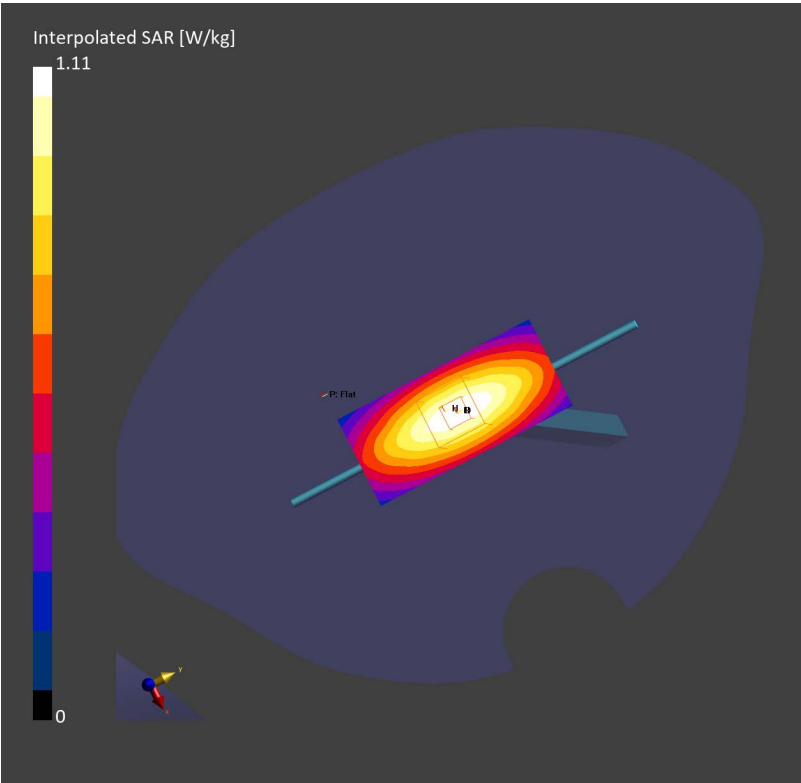
Phantom	TSL	Probe, Calibration Date	DAE, Calibration Date
Twin-SAM V8.0 (30deg probe tilt) – 2173	HSL2450	EX3DV4 – SN7812, 2024–06–25	DAE4ip Sn1847, 2024–12–31

Scans Setup

	Area Scan	Zoom Scan
Grid Extents [mm]	40.0 x 90.0	32.0 x 32.0 x 30.0
Grid Steps [mm]	10.0 x 15.0	6.0 x 6.0 x 1.5
Sensor Surface [mm]	3.0	1.4
Graded Grid	N/A	Yes
Grading Ratio	N/A	1.5
MAIA	N/A	N/A
Surface Detection	VMS + 6p	VMS + 6p
Scan Method	Measured	Measured

Measurement Results

	Area Scan	Zoom Scan
Date	2025–03–27, 10:19	2025–03–27, 10:25
psSAR1g [W/Kg]	0.958	0.957
psSAR10g [W/Kg]	0.630	0.617
Power Drift [dB]	–0.00	–0.02
Power Scaling	Disabled	Disabled
Scaling Factor [dB]		
TSL Correction	No correction	No correction



Test Laboratory: TOWE Lab

System Performance Check Report

Summary

Dipole	Frequency [MHz]	TSL	Power [dBm]	Dev. 1g [%]	Dev. 10g [%]	Dev. Peak [%]	Iso. Error [%]
D1750V2 – SN1115	1750.0	HSL	20.0	5.0	5.8	13.3	–6.1

Exposure Conditions

Phantom Section, TSL	Test Distance [mm]	Band	Group, UID	Frequency [MHz], Channel Number	Conversion Factor	TSL Conductivity [S/m]	TSL Permittivity
Flat, HSL	10		CW, 0--	1750.000, 0	8.11	1.38	41.0

Hardware Setup

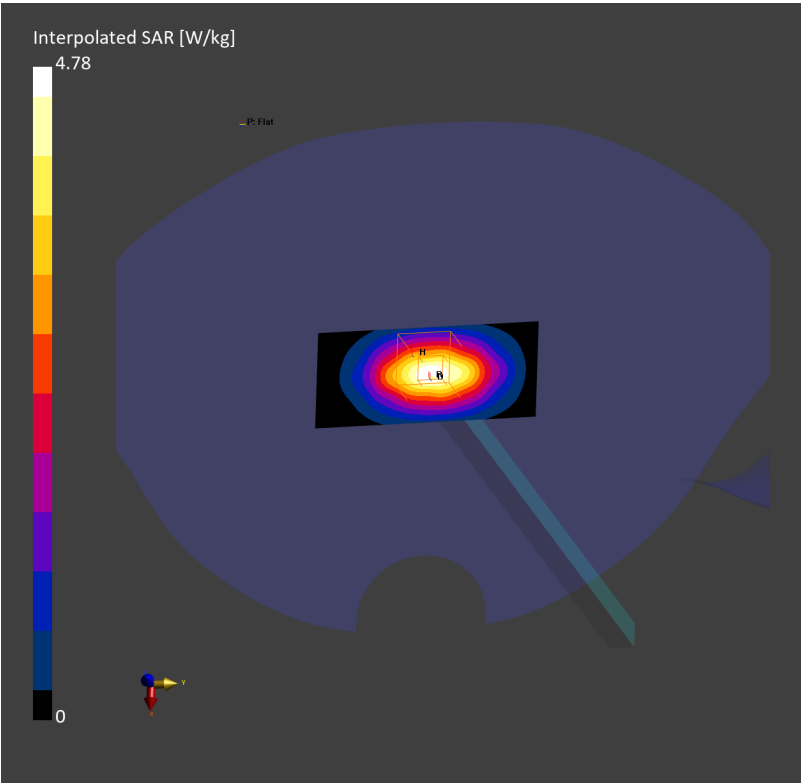
Phantom	TSL	Probe, Calibration Date	DAE, Calibration Date
Twin-SAM V8.0 (30deg probe tilt) – 2173	HSL1750	EX3DV4 – SN7812, 2024–06–25	DAE4ip Sn1847, 2024–12–31

Scans Setup

	Area Scan	Zoom Scan
Grid Extents [mm]	40.0 x 90.0	32.0 x 32.0 x 30.0
Grid Steps [mm]	10.0 x 15.0	6.0 x 6.0 x 1.5
Sensor Surface [mm]	3.0	1.4
Graded Grid	N/A	Yes
Grading Ratio	N/A	1.5
MAIA	N/A	N/A
Surface Detection	VMS + 6p	VMS + 6p
Scan Method	Measured	Measured

Measurement Results

	Area Scan	Zoom Scan
Date	2025–03–19, 15:32	2025–03–19, 15:39
psSAR1g [W/Kg]	3.86	3.88
psSAR10g [W/Kg]	2.07	2.06
Power Drift [dB]	0.00	–0.00
Power Scaling	Disabled	Disabled
Scaling Factor [dB]		
TSL Correction	No correction	No correction



Summary

Dipole	Frequency [MHz]	TSL	Power [dBm]	Dev. 1g [%]	Dev. 10g [%]	Dev. Peak [%]	Iso. Error [%]
D1950V3 – SN1266	1950.0	HSL	20.0	−0.1	0.4	10.7	−6.4

Exposure Conditions

Phantom Section, TSL	Test Distance [mm]	Band	Group, UID	Frequency [MHz], Channel Number	Conversion Factor	TSL Conductivity [S/m]	TSL Permittivity
Flat, HSL	10		CW, 0--	1950.000, 0	7.76	1.44	40.3

Hardware Setup

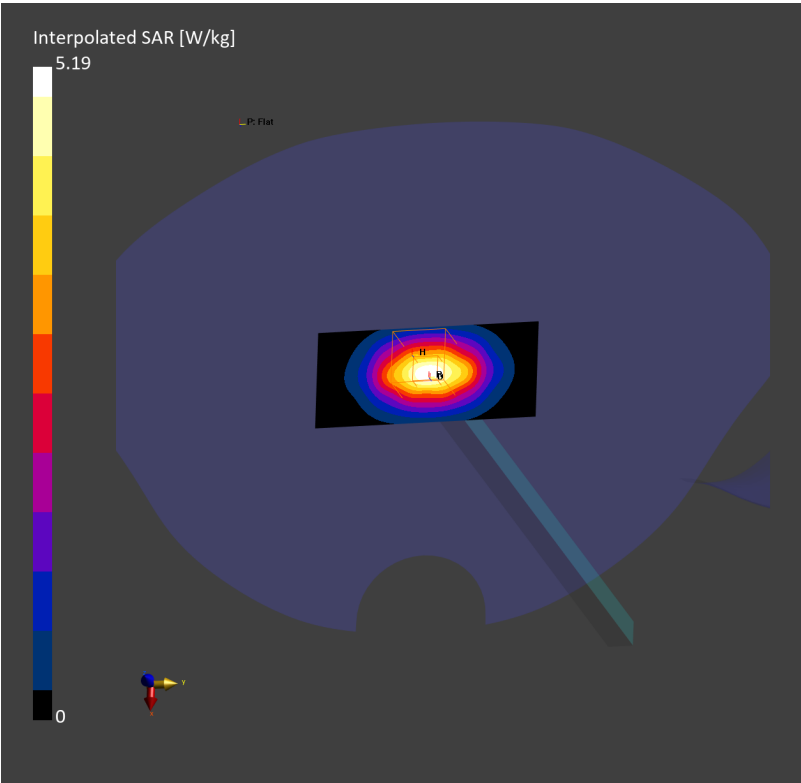
Phantom	TSL	Probe, Calibration Date	DAE, Calibration Date
Twin-SAM V8.0 (30deg probe tilt) – 2173	HSL1950	EX3DV4 – SN7812, 2024-06-25	DAE4ip Sn1847, 2024-12-31

Scans Setup

	Area Scan	Zoom Scan
Grid Extents [mm]	40.0 x 90.0	32.0 x 32.0 x 30.0
Grid Steps [mm]	10.0 x 15.0	6.0 x 6.0 x 1.5
Sensor Surface [mm]	3.0	1.4
Graded Grid	N/A	Yes
Grading Ratio	N/A	1.5
MAIA	N/A	N/A
Surface Detection	VMS + 6p	VMS + 6p
Scan Method	Measured	Measured

Measurement Results

	Area Scan	Zoom Scan
Date	2025-03-19, 15:50	2025-03-19, 15:57
psSAR1g [W/Kg]	4.12	4.12
psSAR10g [W/Kg]	2.11	2.11
Power Drift [dB]	−0.00	−0.01
Power Scaling	Disabled	Disabled
Scaling Factor [dB]		
TSL Correction	No correction	No correction



Summary

Dipole	Frequency [MHz]	TSL	Power [dBm]	Dev. 1g [%]	Dev. 10g [%]	Dev. Peak [%]	Iso. Error [%]
D2600V2 – SN1094	2600.0	HSL	20.0	2.4	4.2	2.7	6.4

Exposure Conditions

Phantom Section, TSL	Test Distance [mm]	Band	Group, UID	Frequency [MHz], Channel Number	Conversion Factor	TSL Conductivity [S/m]	TSL Permittivity
Flat, HSL	10		CW, 0--	2600.000, 0	7.09	1.99	40.6

Hardware Setup

Phantom	TSL	Probe, Calibration Date	DAE, Calibration Date
Twin-SAM V8.0 (30deg probe tilt) – 2173	HSL2600	EX3DV4 – SN7812, 2024-06-25	DAE4ip Sn1847, 2024-12-31

Scans Setup

	Area Scan	Zoom Scan
Grid Extents [mm]	40.0 x 96.0	30.0 x 30.0 x 30.0
Grid Steps [mm]	10.0 x 12.0	5.0 x 5.0 x 1.5
Sensor Surface [mm]	3.0	1.4
Graded Grid	N/A	Yes
Grading Ratio	N/A	1.5
MAIA	N/A	N/A
Surface Detection	VMS + 6p	VMS + 6p
Scan Method	Measured	Measured

Measurement Results

	Area Scan	Zoom Scan
Date	2025-03-19, 08:03	2025-03-19, 08:10
psSAR1g [W/Kg]	5.75	5.75
psSAR10g [W/Kg]	2.59	2.59
Power Drift [dB]	0.01	0.02
Power Scaling	Disabled	Disabled
Scaling Factor [dB]		
TSL Correction	No correction	No correction

