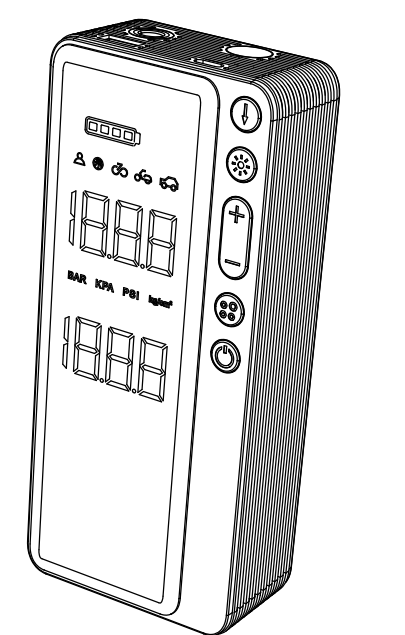


Smart Air pump manual



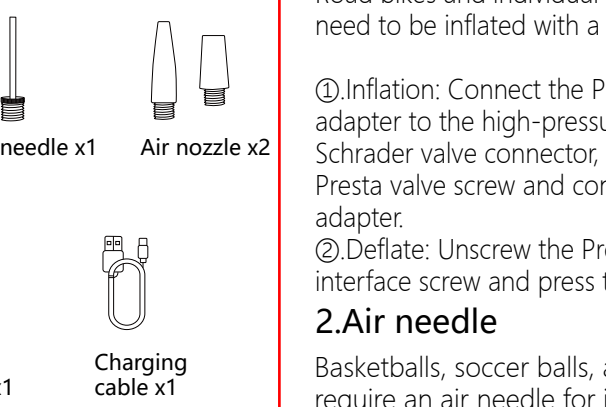
Product Introduction

This smart air pump combines advanced inflation technology with convenient APP control functions, and is precisely adapted to the inflation needs of car tires, bicycle tires, balls, inflatable mattresses, etc.

It has both emergency power bank functions and one-button lighting functions when the machine is not turned on.

It is compact and portable, easy to operate, fast to inflate, and intelligently monitored, meeting inflation needs anytime, anywhere.

Components Overview



⚠ Before inflating other equipment, connect the exposed end of the high-pressure air hose thread to the inflatable air outlet.

1.Presta valve

Road bikes and individual mountain bikes need to be inflated with a Prest valve.

①.Inflation: Connect the Presta valve adapter to the high-pressure pipe Schrader valve connector, unscrew the tire Presta valve screw and connect the adapter.

②.Deflate: Unscrew the Presta valve interface screw and press the air nozzle.

**2.Air needle**

Basketballs, soccer balls, and other balls require an air needle for inflation.

①.Inflation: Connect the air needle to the Schrader valve connector, and insert the needle into the valve inside the ball.

②.Deflation: Insert the needle directly into the ball inflation valve.

**3.Air nozzle**

The use of a swim spout is required to inflate the swim ring.

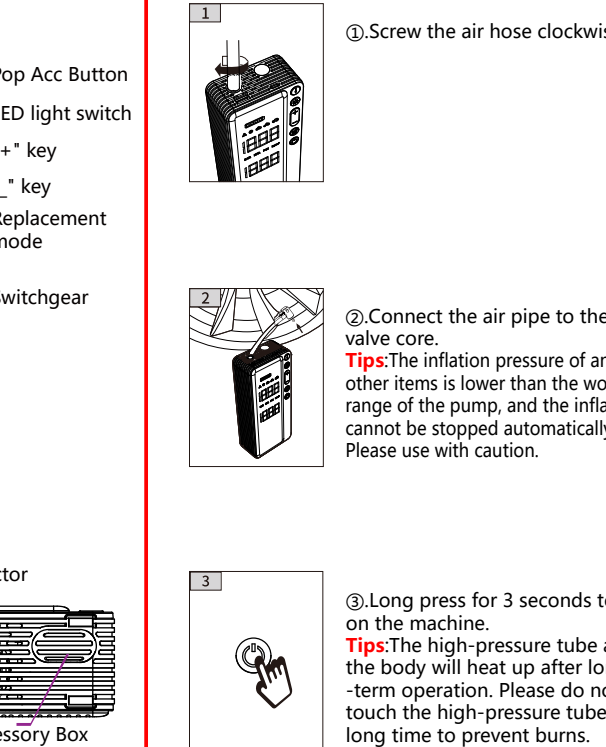
4.High pressure air inflation tube

For mountain bikes, road bikes, motorcycles, and cars.

①.Inflation: Connect the Schrader valve to the high-pressure pipe interface.

①.Deflation: Use a 4mm hexagonal tool to press the needle inside the valve.

Instructions for Use



1. Inflation steps

①.Screw the air hose clockwise.

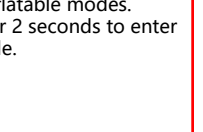
②.Connect the air pipe to the tire valve core.

**Tips:**The inflation pressure of and other items is lower than the working range of the pump, and the inflation cannot be stopped automatically. Please use with caution.

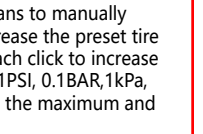
③.Long press for 3 seconds to turn on the machine.

**Tips:**The high-pressure tube and the body will heat up after long-term operation. Please do not touch the high-pressure tube for a long time to prevent burns.

④.Short press the mode " " between five inflatable modes. Press " " for 2 seconds to enter unit switch mode.

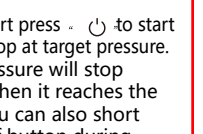


⑤." + " , " - " means to manually increase and decrease the preset tire pressure value, each click to increase or decrease by 0.1PSI, 0.1BAR, 1kPa, and 0.1Kg/cm² to the maximum and minimum values.



⑥.Preset PSI, Short press - to start inflation, Auto-stop at target pressure.

**Tips:**The air pressure will stop automatically when it reaches the preset value. You can also short press the on/off button during inflation.



⑦.Preset PSI, Short press - to start inflation, Auto-stop at target pressure.

**Tips:**The air pressure will stop automatically when it reaches the preset value. You can also short press the on/off button during inflation.

2.Mode switch

①.Short press on the mode button to switch between fiveinflation modes.

②.Long press the mode button to switch air pressure units (PSI/BAR/KPA/kg/cm²).

③.Professional mode: no mode icon in the display, preset pressures freely adjustable.

④.Adjustable range: 3-150 PSI/0.2-10.3 BAR

3.Lighting

①.Long press the light button: There are two modes: constant light and strobe.

**4.USB charging**

①.Battery level is displayed in four frames, the number of lit frames represents the remaining battery level.

5.Power on/off

①.Power on: Press and hold the power button for 2 seconds to turn on the air pump.

②.Power off: When the air pump is powered on, press and hold the power button for 2 seconds to turn off the air pump.

③.After the air pump is powered on or fully charged, it will automatically shut down if there is no operation within 3 minutes.

④.When the air pump is used as a mobile power source, only the power indicator light is on the screen. Disconnect the device being charged and the air pump will automatically shut down after 3 seconds.

Basic parameters

Product model	HX003
Bluetooth	2.4G
Inflation pressure	0.2-10.3Bar/3-150psi
maximum power	120W
Working current	8-12A
USB-A Output	5V/2A
USB-C Input	5V/2A
Working temperature	≤35℃
Rated capacity	2500mAh
Storage temperature	-15℃~45℃
Product weight	810g
Product size	7.17inX3.19inX1.81in

Warning

1.Age limit: Only for users aged 16 and above, keep children away during inflation.

2.Battery use: Only use batteries approved by the manufacturer, avoid high temperature, impact or damage.

3.Environmental requirements: Use in a dry and clean environment, the product is not waterproof.

4.Abnormal handling: If an abnormality occurs, try to restart; if it does not work, contact customer service.

5.Usage suggestions: It is recommended to charge the battery every 3 to 6 months to help extend the battery life.

6.Basketball inflation: Inflate multiple times to achieve the ideal pressure.

Troubleshooting

Fault	Troubleshooting methods
Slow inflation	① Make sure the power supply is sufficient. ② Check if there is any air leakage in the air pipe. ③ Confirm whether the connection parts at both ends of the air pipe are tightened. ④ Check if the inflatable items are leaking.
Powered but not inflated.	① Check if the power supply is sufficient. ② Confirm whether the current tire pressure exceeds the preset value.
Unable to increase or decrease the preset pressure.	Make sure the inflation mode is correct. Select the mode and adjust the preset value within the range of 3 to 150 psi.
Inflation is normal, but the pressure is displayed as zero	Low-pressure inflatable products such as balloons cannot be measured by this device due to range limitations.

Leakage in the air pipe

The battery icon display in the inflation state is inconsistent with the standby state.

The voltage of the power lithium battery drops significantly during the discharge process, and the voltage is consistent when powered on and in standby. This phenomenon is not a fault.

Replace the adapter with a safe and compliant one and the original charging cable to recharge.

Ensure sufficient power, verify 5V/2A compatibility, avoid using as a power bank when inflated, and use the original charging cable.

Fixed cyclone.

The voltage of the power lithium battery drops significantly during the discharge process, and the voltage is consistent when powered on and in standby. This phenomenon is not a fault.

Replace the adapter with a safe and compliant one and the original charging cable to recharge.

Ensure sufficient power, verify 5V/2A compatibility, avoid using as a power bank when inflated, and use the original charging cable.

FCC Warning

**15.19 Labeling requirements.**  
This device complies with part 15 of the FCC Rules. Operation is subject to the following two conditions: (1) This device may not cause harmful interference, and (2) this device must accept any interference received, including interference that may cause undesired operation.

**15.21 Information to user.**  
Any Changes or modifications not expressly approved by the party responsible for compliance could void the user's authority to operate the equipment.

**15.105 Information to the user.**  
Note: This equipment has been tested and found to comply with the limits for a Class B digital device, pursuant to part 15 of the FCC Rules. These limits are designed to provide reasonable protection against harmful interference in a residential installation. This equipment generates uses and can radiate radio frequency energy and, if not installed and used in accordance with the instructions, may cause harmful interference to radio communications. However, there is no guarantee that interference will not occur in a particular installation. If this equipment does cause harmful interference to radio or television reception, which can be determined by turning the equipment off and on, the user is encouraged to try to correct the interference by one or more of the following measures:  
-Reorient or relocate the receiving antenna.  
-Increase the separation between the equipment and receiver.  
-Connect the equipment into an outlet on a circuit different from that to which the receiver is connected.  
-Consult the dealer or an experienced radio/TV technician for help.

**FCC RF Radiation Exposure Statement:**  
1. This Transmitter must not be co-located or operating in conjunction with any other antenna or transmitter.  
2. This equipment complies with RF radiation exposure limits set forth for an uncontrolled environment.  
3. This equipment should be installed and operated with minimum distance 5mm between the radiator and your body.