

# KartaDashcam

## User Manual (Online Version)

Update: Apr 28, 2024



## Introduction

KartaDashcam (Will be unified once the brand is confirmed afterwards) empowered the in-car eco system with best-in-class hardware and software platforms. Together with other smart IoT devices, KartaDashcam can offer advanced safety features to drivers, e.g. video proof, incident recording, SOS emergency service, incident risk alert. On the other hand, Fleet administrators can also benefit from the 7&24h footage of assets to significantly improve the fleet management efficiency.

The various components and buttons on the camera body are as follows:  
<Illustration of product wireframe with annotation>

---

# Product overview

## Standard components (With images)

- a) Outward KDC
- b) OBD port cable
- c) Clips
- d) Stick pads
- e) Alcohol cotton
- f) Trim removal tool
- g) SOS button

## Optional accessories

- a) Inward camera
- b) Inward camera cable
- c) Hardwiring kit
- d) Cigarette port cable
- e) Cigarette port extension module
- f) Harness wiring for immobilizer

---

# Installation

To minimize distractions and objects obscuring your view even further we strongly suggest installing KartaDashcam in our recommended professional workshop or strictly follow our guidelines as below.

1. **Inserting SIM-Card:** One nano SIM card should be inserted to devices



Open the right side cover of KDC

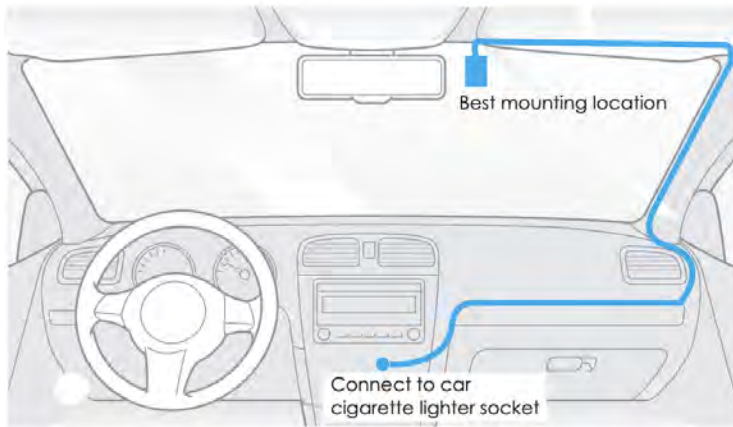


Use needle to pull out the SIM card holder



Insert the SIM card

2. **Power the device:** You can power KDC with three ways (Default is solution b)
- a) Temporary installation: Use a cigarette cable to connect KDC with cigarette port, get the power supply once the car is turned on. SOS button is attached also.



- b) Plugin and Plugout installation: Use OBD port cable to connect with OBD port in Car. Get the power supply and Can bus permanently. SOS button is attached, ACC and immobilizer are also supported (immobilizer need additional harness wiring cable, reused from KD)

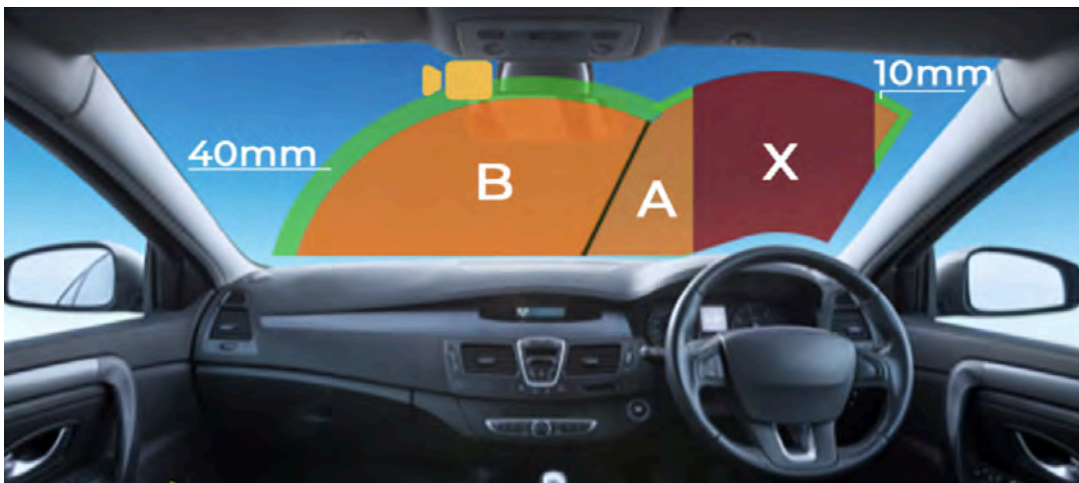


- c) Permanently power supply installation: User hardwiring kit to connect with car battery and ACC signal permanently.



### 3. Find the best location before installation

With the help of a companion APP, Please find the right location for both outward and inward cameras. We recommend the location of KartaDashcam in the green part of area B (As top as you can)



And the key principle of camera location are

- Do not install / mount the camera in a location that interferes with the driver's visibility and safety.

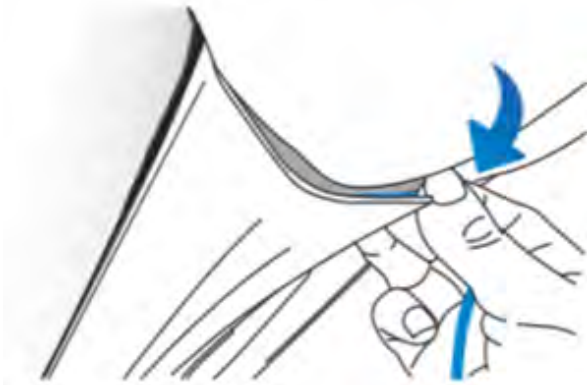


- b. Install / mount the camera close to the rearview mirror so that both sides of the scene being recorded are equally covered by the camera's FOV (field of view).
- a. To ensure a clear view on rainy days, the lens should be positioned within the windshield wiper's sweeping range.
- b. Do not install / mount the camera on or near airbag panels.
- c. Installation / mounting location should not be affected by sun control film (window tint). There should not be any other electronic equipment close to the camera for optimal performance.
- d. Do not install / mount the camera or cables near an airbag panel or within the airbag's working range. The manufacturer is not liable for any injury or death caused by the deployment of the airbag.
- e. For inward camera, please make sure can detect both the driver and back seat of car clearly

Via companion APP live stream preview, please adjust the angle of outward and inward cameras

#### 4. Fix the device

We strongly suggest hiding the cable in the lining of your car, which can make it as safe as possible and also neat and tidy.



## Basic Operation

### Indicator Lights

Component	Status	Behavior
-----------	--------	----------

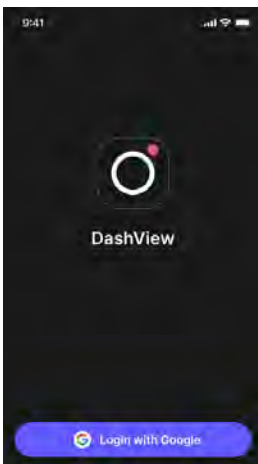
Status LED	LED status	Description
	Stable GREEN ON	System works normally
	Stable RED ON	Device fatal Error indication
	Flashing GREEN (0.5Hz)	Inward recording is working
	Flashing of RED (2Hz)	SOS emergency recording
	All LED OFF	No power or Device failure

Voice/Sound notification (WIP)

## Connect with <KartaDashcam>

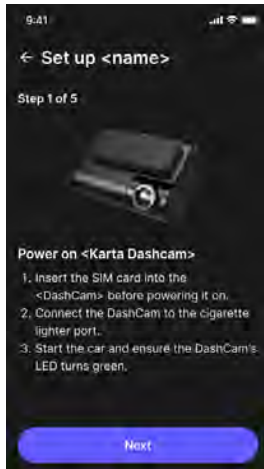
Easily connect to your <KartaDashcam> using the <KartaLink> App. Here's how:  
~~(which can be downloaded from app store and google store), Follow the steps to connect with KDC.~~

- 1. Download the App:** Get the <KartaLink> App from the [App Store](#) or [Google Play](#).
- 2. Sign In:** Open the <KartaLink> App and sign in using your Google Account.

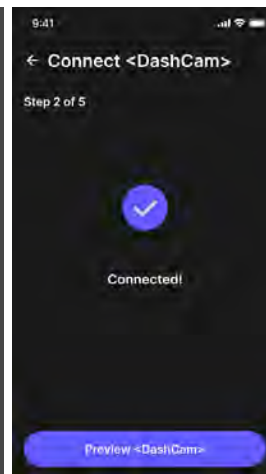
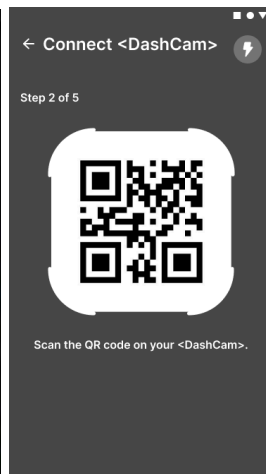
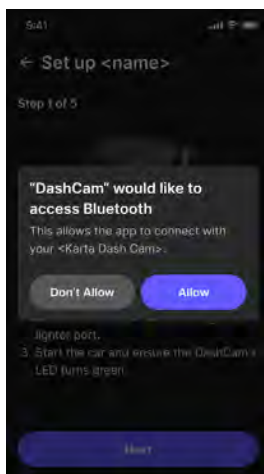


- 3. Turn On Your DashCam:** Switch on your <Karta DashCam> and follow the on-screen instructions.

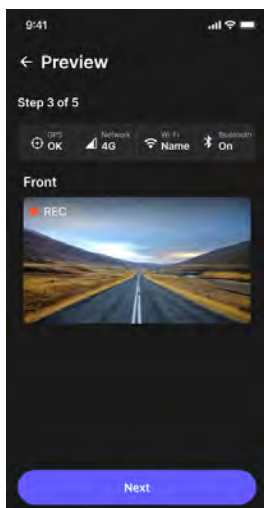




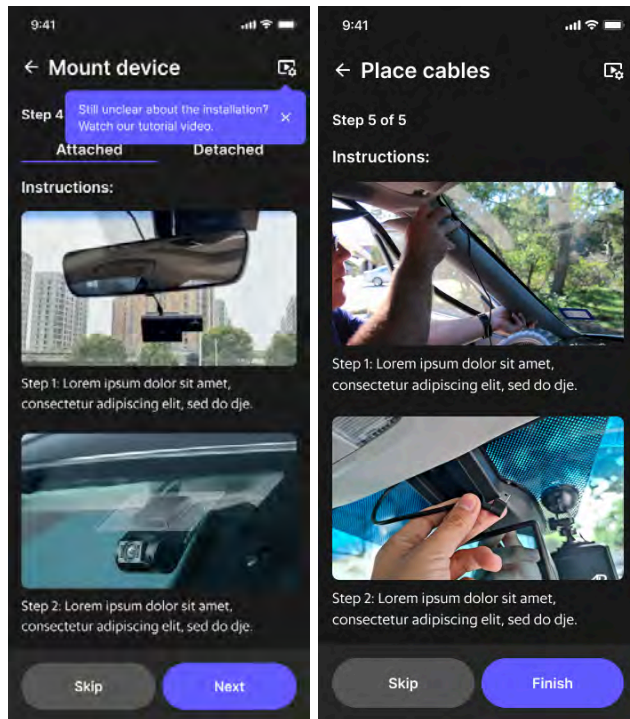
**4. Bluetooth Connection:** Allow Bluetooth access in the app and scan the QR code on your dashcam to connect.



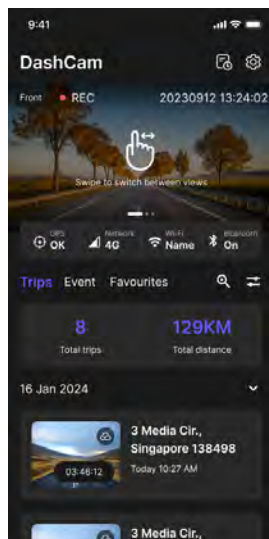
**5. Check WiFi Connection:** Ensure your WiFi is connected to view live previews in the app.



**6. Install Your <DashCam>:** Follow the instructions for mounting your device and arranging the cables properly.



**7. Access the Home Page:** You should now be on the DashCam's homepage and ready to go.



~~Here list the companion APP screen of connection (P0, Enable BLE, Connect WIFI, Live stream view)~~

**Note:**

- KDC can only be connected and accessed with authorization
- 

## Recording

### Outward camera

Once KartaDashcam is powered on, one outward camera will continuously record the video in 1080p, 24fps quality. Typical latest 8h videos can be recorded in 1080p, 15Mbps. Green LED will stable ON to indicate KartaDashcam is working with loop recording.

### Inward camera

One inward camera can be supported for recording for safety purpose only, e.g. Driver pressed the SOS emergency button or in-ride safety protection for both driver and passenger protection once get the consent. Red LED will be flashed to indicate the inward camera is recording.

---

## Parking surveillance

During the car parking, KDC can detect unattended broken or movement, and trigger a parking mode event recording. The camera will automatically record a video clip.

Note: Parking mode is only available with OBD power supply or hardwiring kit connection

---

## SOS service

One physical SOS button is available together with KDC.

Once the SOS button is installed properly, In case of some emergency cases, drivers can press this button for some emergency help from the police or Grab service center. In the meantime, KartaDashcam will record less than 3 minutes audio/videos for both outward and inward cameras, which is very important info for accident processing. Please understand this feature will only be used for emergency cases and users should be well trained to use it properly.

---

## Reset

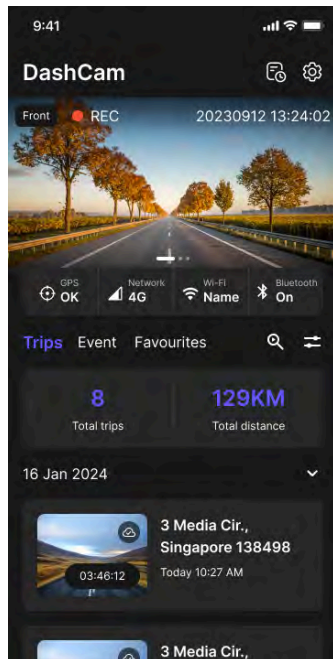
On top of KartaDashcam, there is one reset button for users in case user find the device is in abnormal status, e.g. Red LED is ON to indicate device error or none LED is ON. Once Rest button is pressed, the device will restart and will not impact any parameters and storages.

---

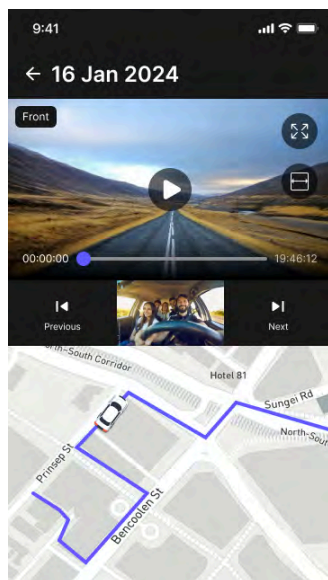
## View Recordings in the App

Easily access and manage your trip recordings with these steps:

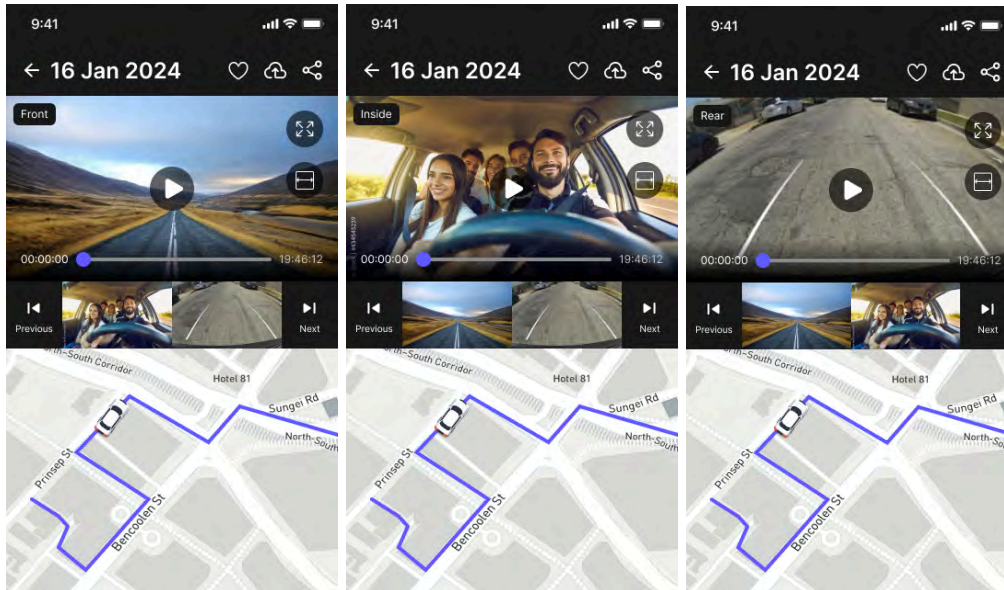
**1. Find Recordings:** Go to the DashCam homepage to see all your trip recordings.



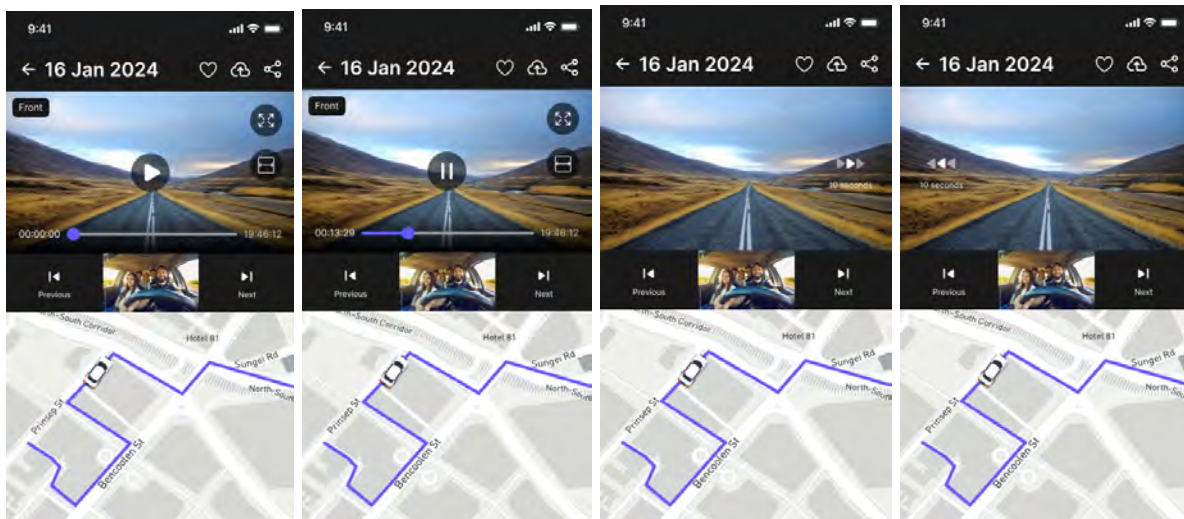
**2. Select a Recording:** Choose the one you want to view. The video will appear at the top, and the route map will be displayed at the bottom of the screen.



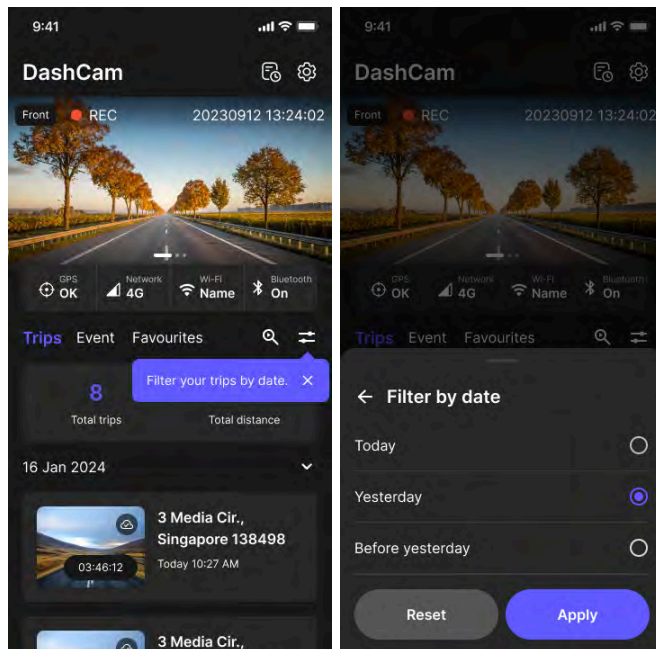
**3. Switch Views:** Tap the video thumbnail to switch views between the 'Front', 'Inside', and 'Rear' cameras. Note: 'Inside' and 'Rear' cameras are optional and may require installation.



**4. Video Controls:** Use the 'Play' and 'Pause' buttons to control the video. Tap multiple times to fast forward or rewind.

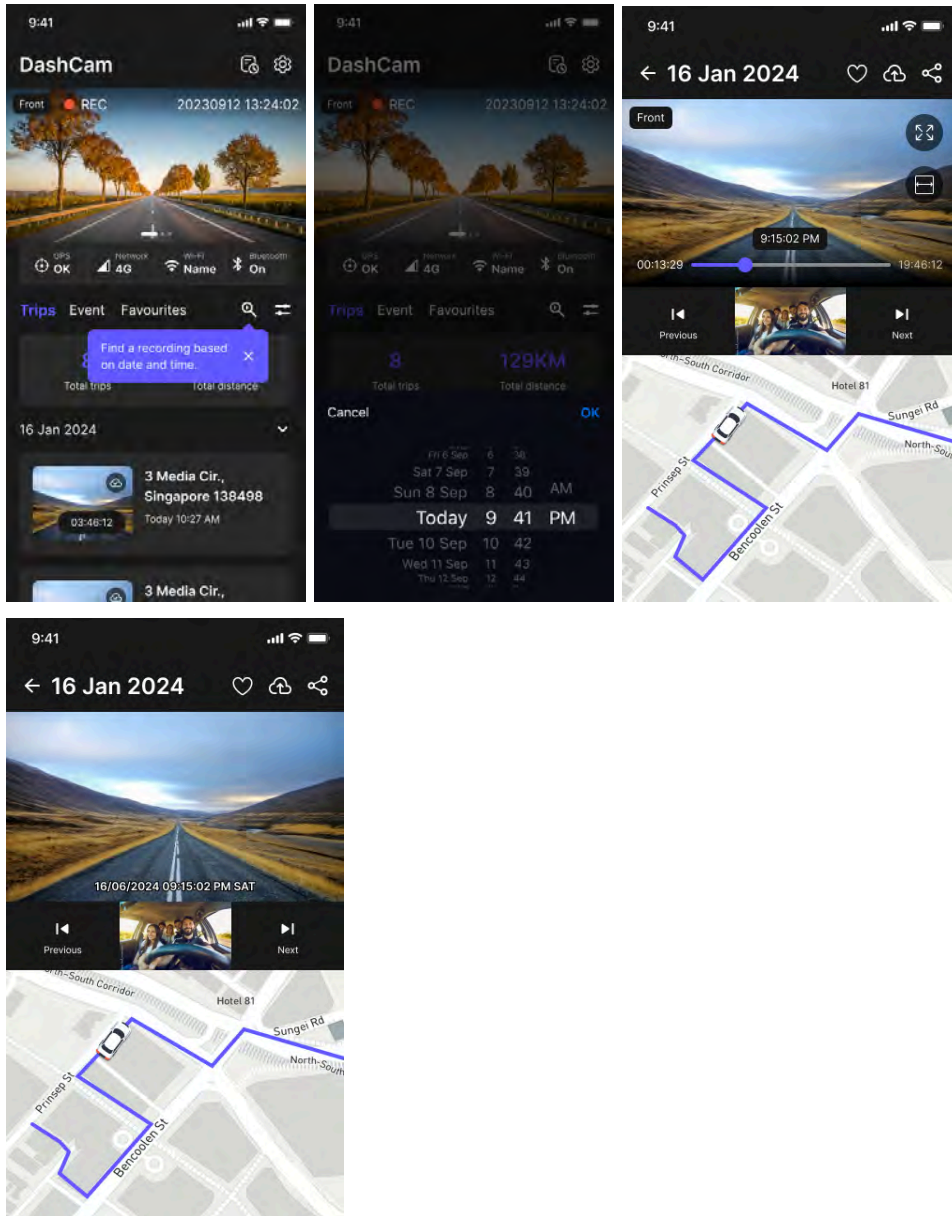


**5. Filter Recordings:** Use the 'Filter' icon to sort your trip recordings by date.



**6. Search for a Video:** Click the 'Search video' icon to find recordings by specific dates and times. Drag the video timeline to pinpoint an exact moment.





## Device Settings

Open the companion APP, Do the device setting for Date/Time

- MM, DD, YYYY
- HH:MM:SS

Zone

- Automatically

- Manual setting (Zone + N)

#### WIFI Setting

- Enable/Disable
- Name and password

#### BLE setting

- Enable/Disable

#### 4G connection

- APN

#### Inprint watermark

- Datetime
- GPS

#### User profile

- Account email
- Car license plate

#### Parking mode alert notification

- Email lists

---

## End-user license agreement (EULA)

You can find the online EULA via companion APP or scan the below QR code, Terms of service are also available.



---

## Specifications

Power supply	DC12V~24V, 1.5A
Main processor	Qualcomm® QCS6490
Outward Camera	F1.8, 4K@30fps, DFOV:148.2°, with night vision
Inward Camera	F2.3, 1080P@25fps, DFOV:172°, infrared LED supported
GPS	L1 band:GPS/GLONASS/Galileo/BeiDou/QZSS/SBAS L5 band:GPS/Galileo/ BeiDou/IRNSS With interior and exterior antenna, Accuracy 1-3m Up to 10Hz, Max. 135 satellites tracking
2G/3G/4G	LTE FDD:B1/2/3/4/5/7/8/12/13/14/20/28/66/71, Max power: 25dBm LTE TDD:B38/40/41, Max power: 24.5dBm WCDMA:B1/2/4/5/8, Max power: 25dBm GSM:3/8, Max power: 34dBm
Bluetooth	Bluetooth V5.2 Dual mode Frequency:2.402GHz ~ 2.480 GHz
Wi-Fi	802.11 a/b/g/n/ac/ax, support Wi-Fi 6 2.4GHz~2.4835GHz, 5.15GHz~5.85GHz EIRP 2.4 GHz: <33 dBm(FCC), <20 dBm(CE) EIRP 5.8 GHz: <33 dBm(FCC), <14 dBm(CE)
OBD	Support for all legislated OBD-II protocols: ISO 15765-4 (CAN)
IMU	3-axis Accelerometer 3-axis Gyroscope
Storage	FHD outward recording, ~8h
Size	76mm*63mm*45mm (L×W×H)
Weight	230g
Protection	IP20
Operating Environment	-10°C ~ +50°C, 5% to 95% non condensing
Storage Environment	-20°C ~ +70°C, 5% to 95% non condensing
Certifications	CE,FCC IMDA, SDPPI, NBTC, NTC, SIRIM

---

## FCC Statement

FCC ID of KartDashcam GSP is 2BB5A-GSP.

This equipment has been tested and found to comply with the limits for a Class B digital device, pursuant to Part 15 of the FCC (Federal Communications Commission) Rules.

These limits are designed to provide reasonable protection against harmful interference in a residential installation. This equipment generates uses and can radiate radio frequency energy and, if not installed and used in accordance with the instructions, may cause harmful interference to radio communications. However, there is no guarantee that interference will not occur in a particular installation.

If this equipment does cause harmful interference to radio or television reception, which can be determined by turning the equipment off and on, the user is encouraged to try to correct the interference by one or more of the following measures:

- Reorient or relocate the receiving antenna.
- Increase the separation between the equipment and receiver.
- Connect the equipment into an outlet on a circuit different from that to which the receiver is connected.
- Consult the dealer or an experienced radio/TV technician for help.

This device complies with part 15 of the FCC Rules. Operation is subject to the following two conditions: (1) This device may not cause harmful interference, and (2) this device must accept any interference received, including interference that may cause undesired operation.

Changes or modifications not expressly approved by the party responsible for compliance could void the user's authority to operate the equipment.

## FCC Radiation Exposure Statement

This equipment complies with FCC radiation exposure limits set forth for an uncontrolled environment. This equipment should be installed and operated with a minimum distance 20cm between the radiator & your body.

We declare that this device is in compliance with the essential requirements and other relevant provisions of Directive 2014/53/EU.

This product does not contain the AC/DC adapter. You need to purchase the DC 12V/3A that is compliant with the directive 2014/30/EU.

The adapter shall be installed near the equipment and shall be easily accessible.

---

## **Caution**

1. The temperature of KartaDashcam surface will become higher because of the heating generation, and overheating risk will happen on the front side of devices, please do not touch the surface of KartaDashcam for more than 1s.