

**Shenzhen Magic Treasure Times Technology Co., Ltd**

*Add: Magic Treasure, 2nd Floor, Building 3, Longhui Industrial Park, Xinhe Community,  
Fuhai Street, Bao'an, Shenzhen, China*

*Date: 2025/4/28*

*FCC ID: 2BB4V-G06*

*Dear Sir/Madam,*

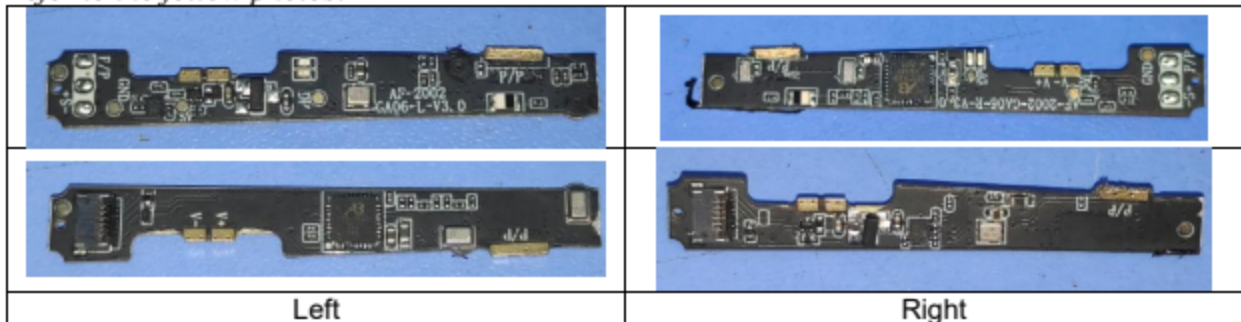
*We, Shenzhen Magic Treasure Times Technology Co., Ltd Hereby declares the following statement for Federal Communications Commission, for each model above, the left&right parts are the same schematic circuits, but the locations of components are different.*

**Product name: Smart glasses**

**Model no.: G06, G05, E13V**

*Additionally, for each model above, the left&right earphones are the same schematic circuits, but the locations of components are different.*

*Refer to the follow photos:*



Sincerely,

*WEN CONG YUN*

Name/Title : WEN CONG YUN/CEO  
Company: Shenzhen Magic Treasure Times Technology Co., Ltd  
Address: Magic Treasure, 2nd Floor, Building 3, Longhui Industrial Park, Xinhe Community, Fuhai Street, Bao'an, Shenzhen, China  
Phone: 8613076929999  
Fax: N/A  
E-Mail: 13076929999@163.com