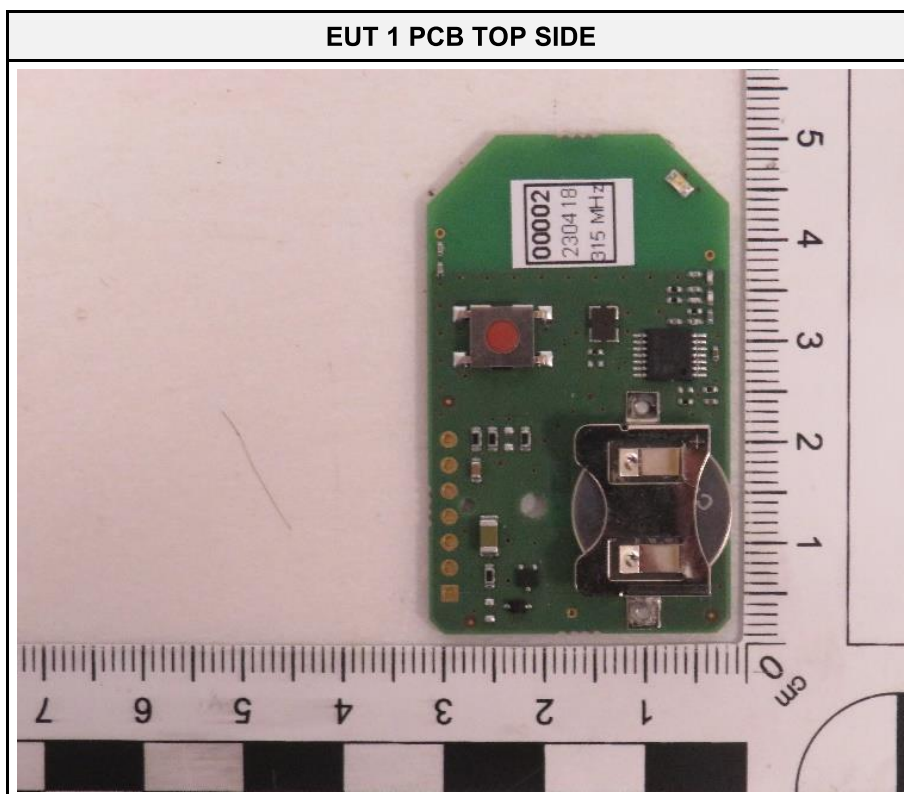
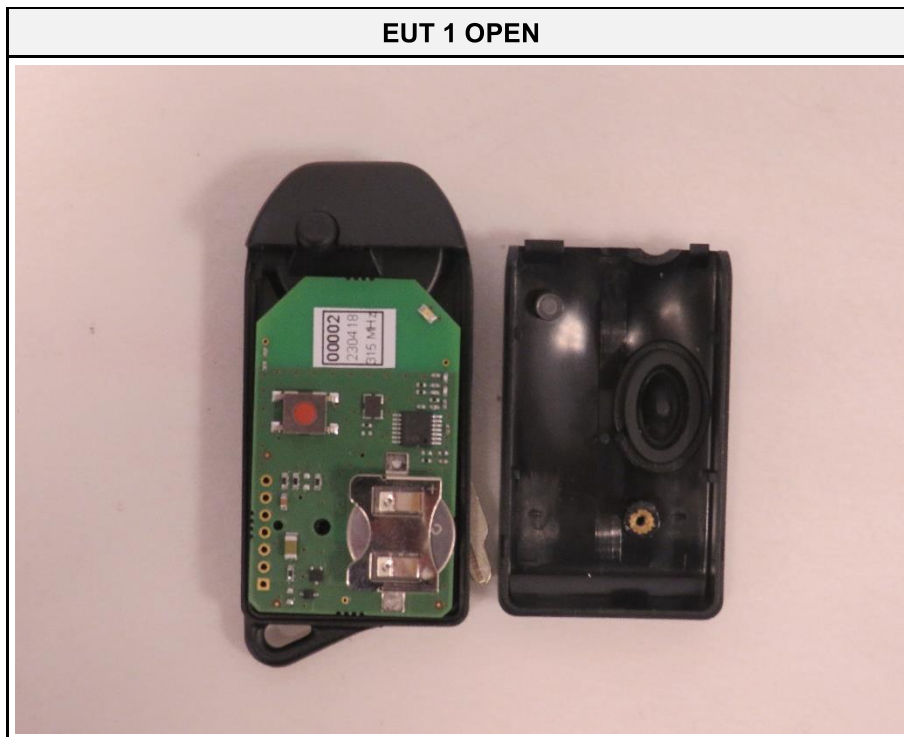
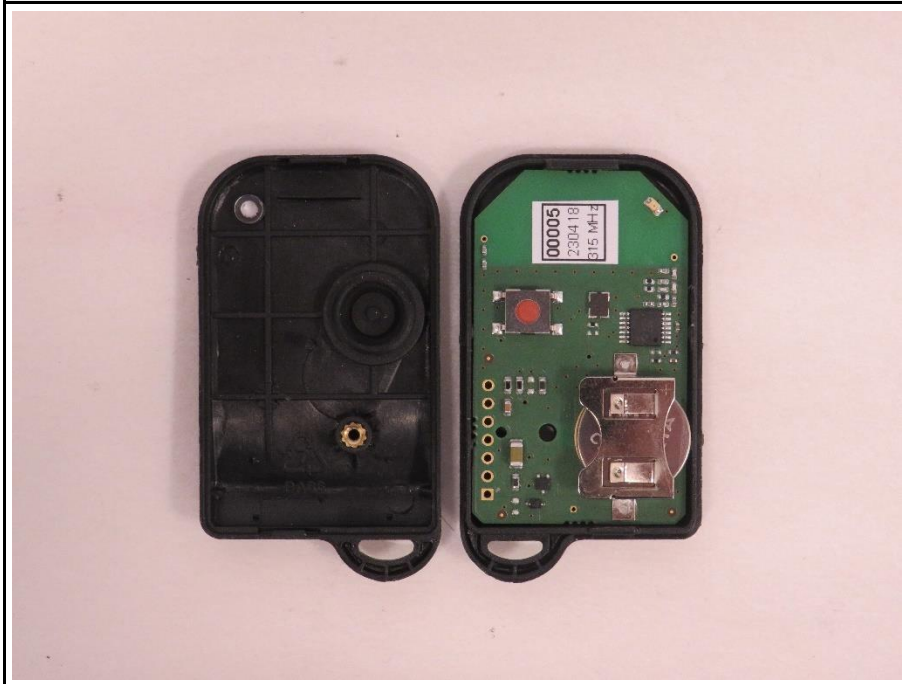


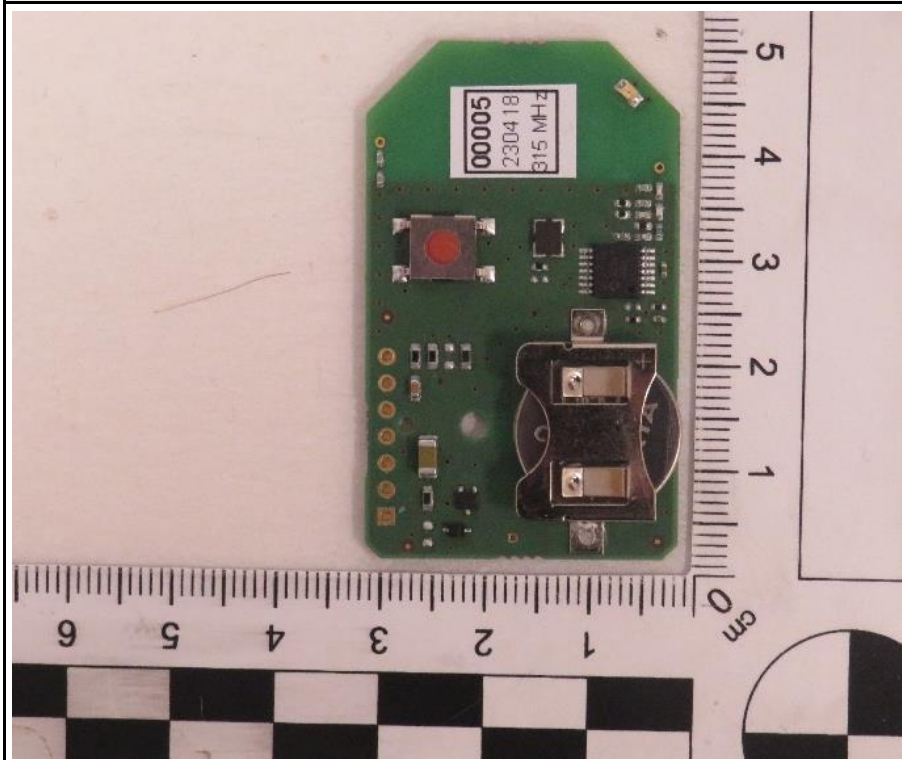
1.2 Equipment Photos – Internal

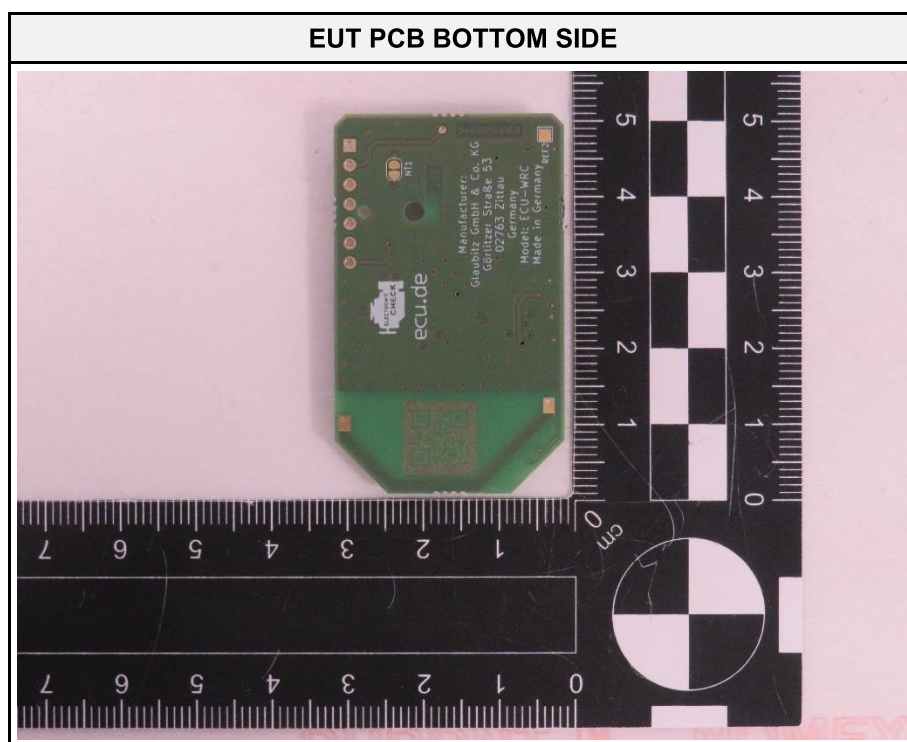


EUT 2 OPEN

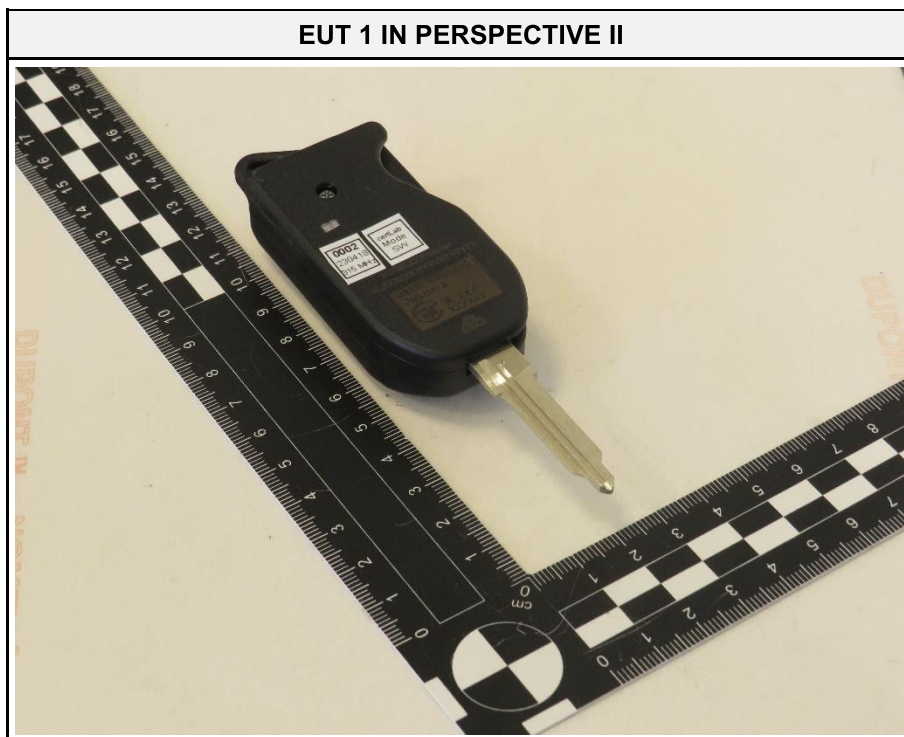
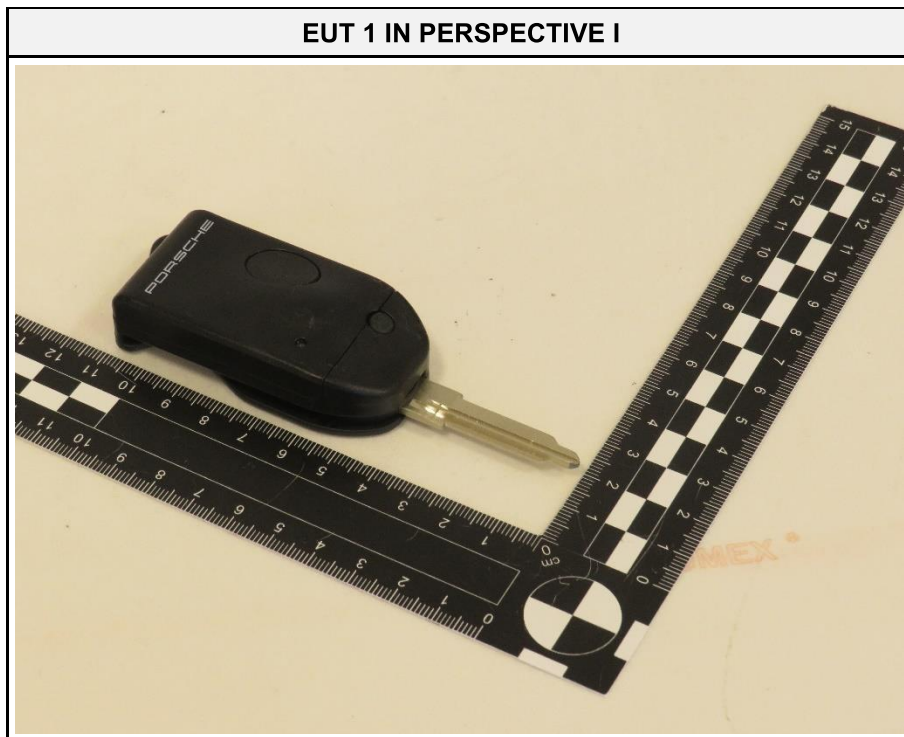


EUT 2 PCB TOP SIDE

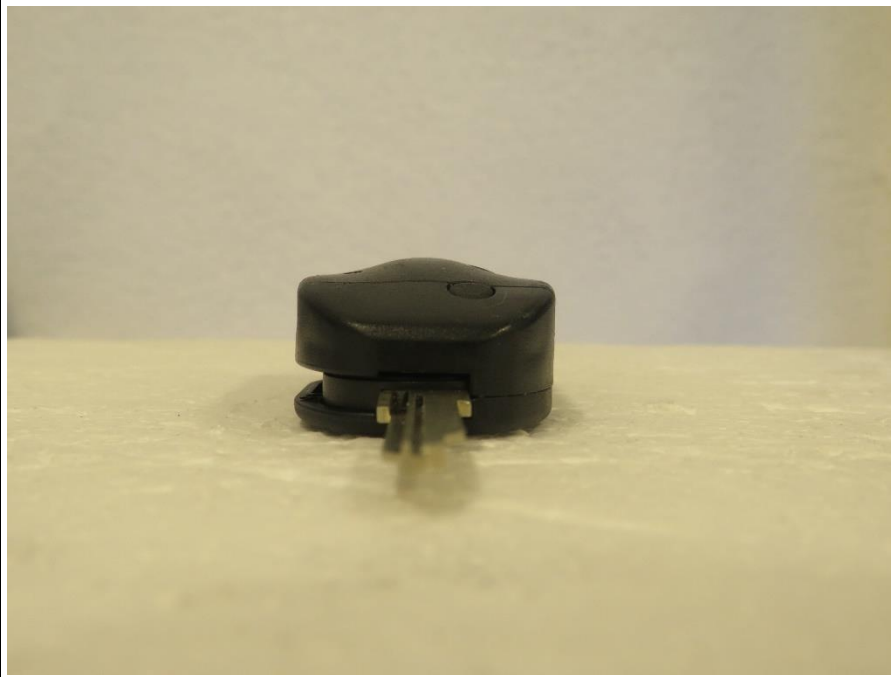




1.3 Equipment Photos - External



EUT 1 FRONT SIDE



EUT 1 REAR SIDE



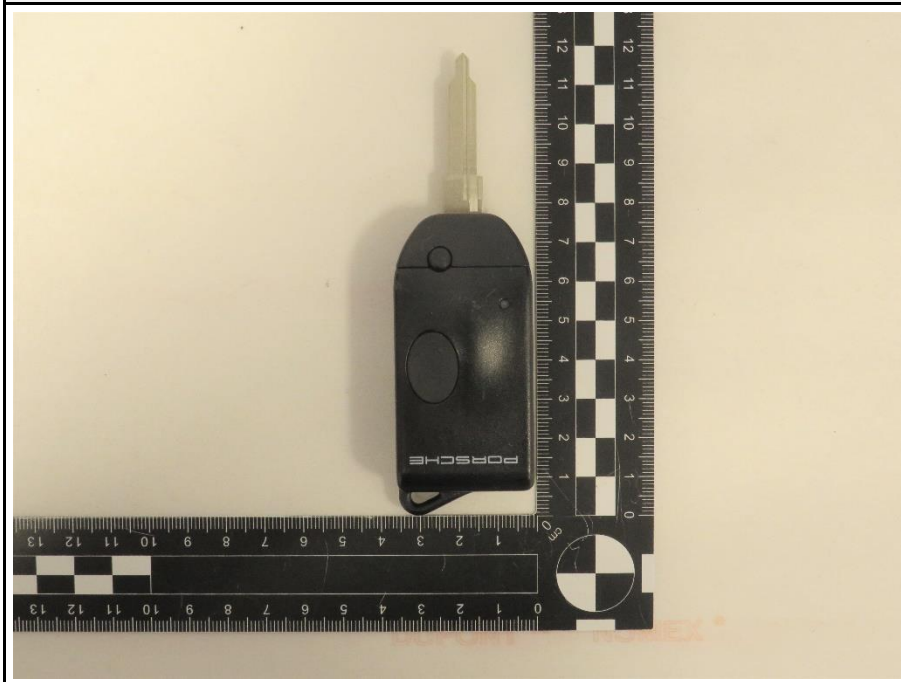
EUT 1 RIGHT SIDE



EUT 1 LEFT SIDE



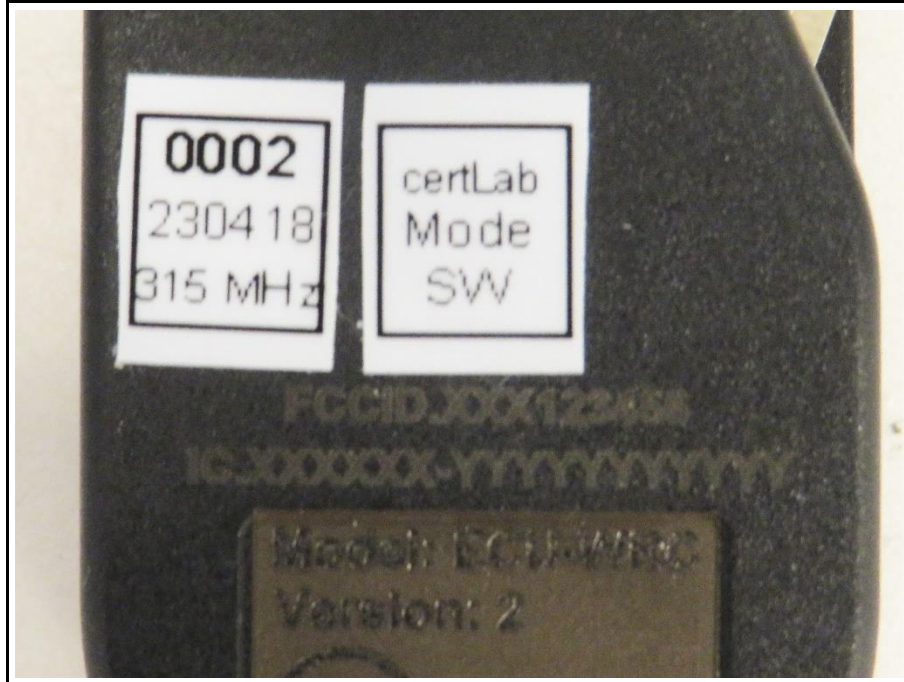
EUT 1 TOP SIDE



EUT 1 BOTTOM SIDE



EUT 1 LABEL



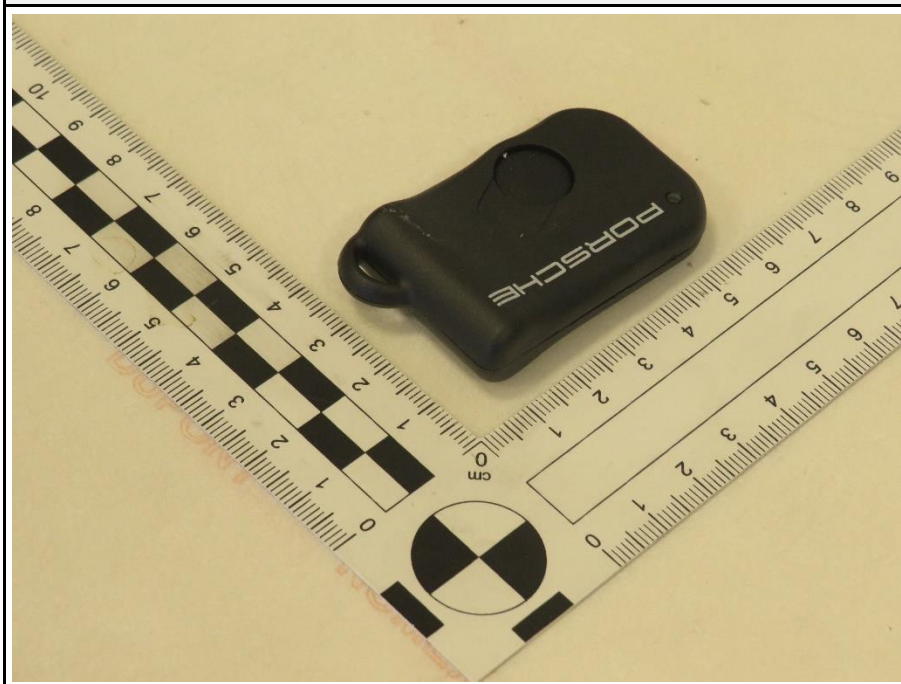
EUT 1 WITH ALL ACCESSORIES



EUT 2 IN PERSPECTIVE I



EUT 2 IN PERSPECTIVE II



EUT 2 FRONT SIDE



EUT 2 REAR SIDE

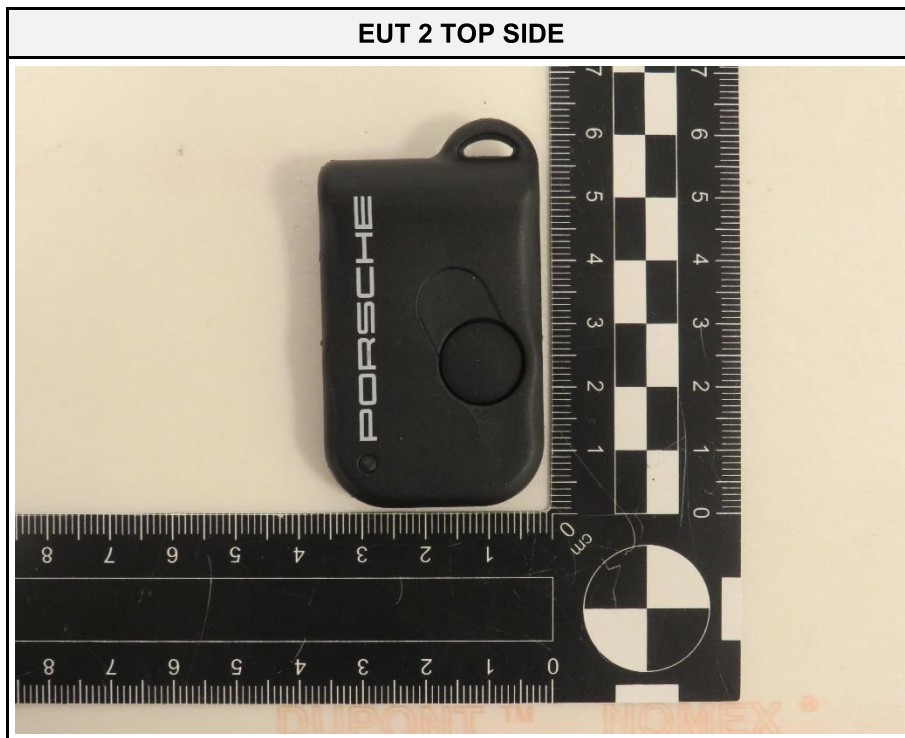


EUT 2 RIGHT SIDE

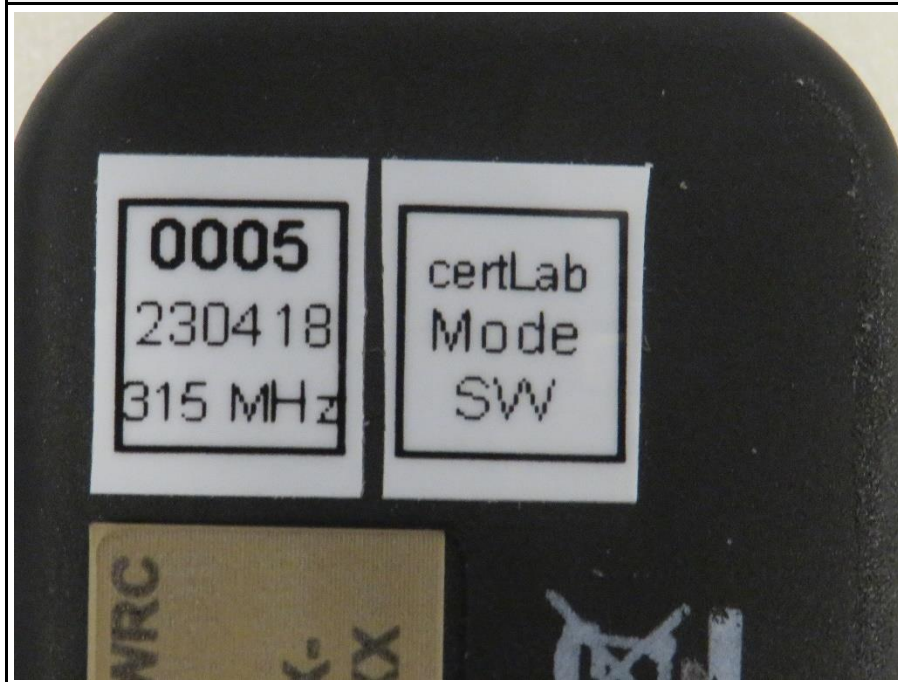


EUT 2 LEFT SIDE





EUT 2 LABEL



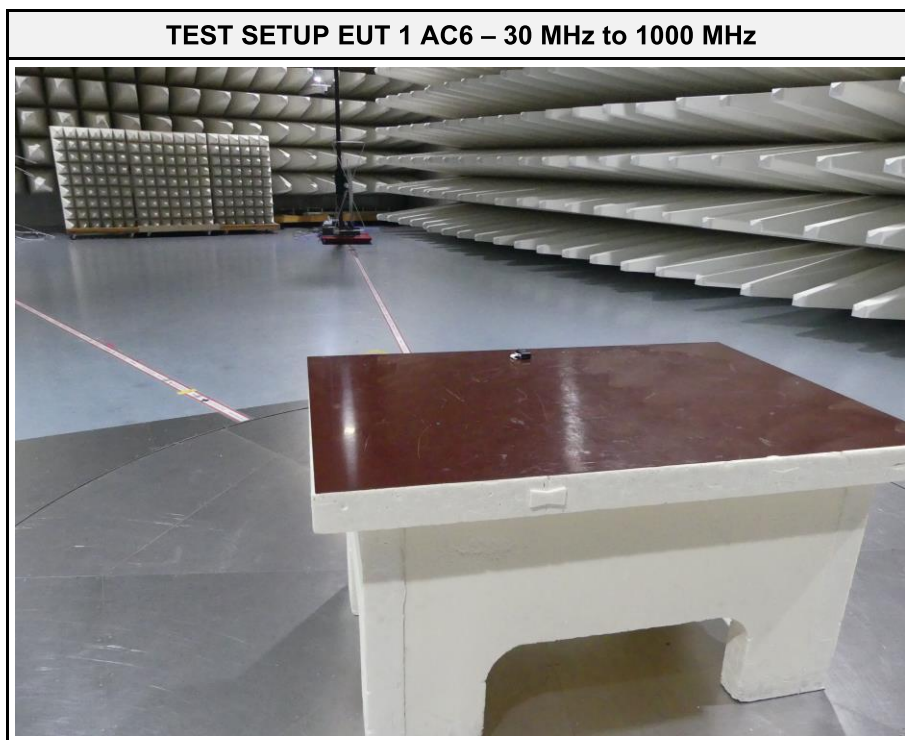
EUT 2 WITH ALL ACCESSORIES



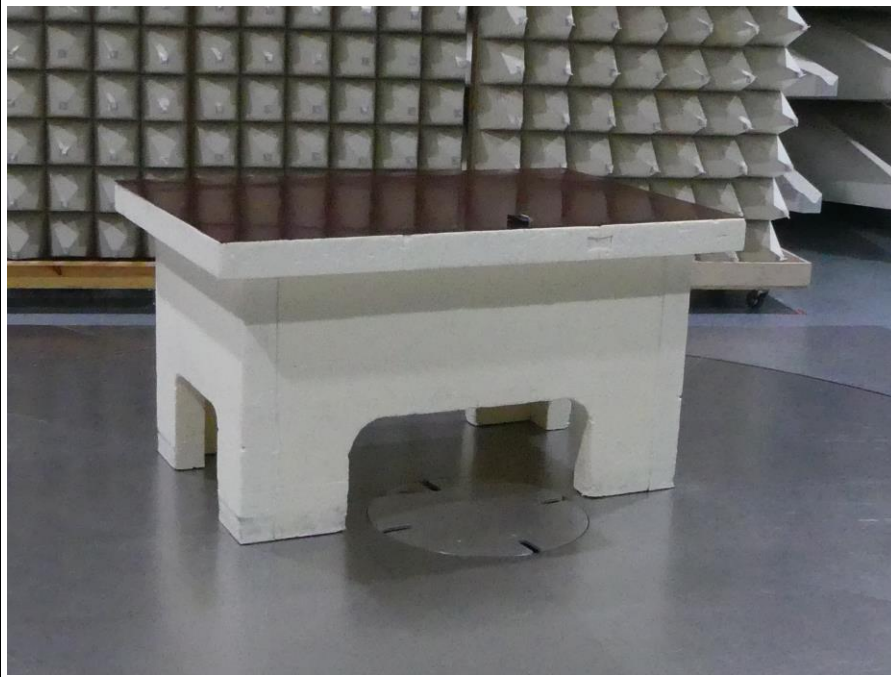
EUT 1 & 2 BATTERY



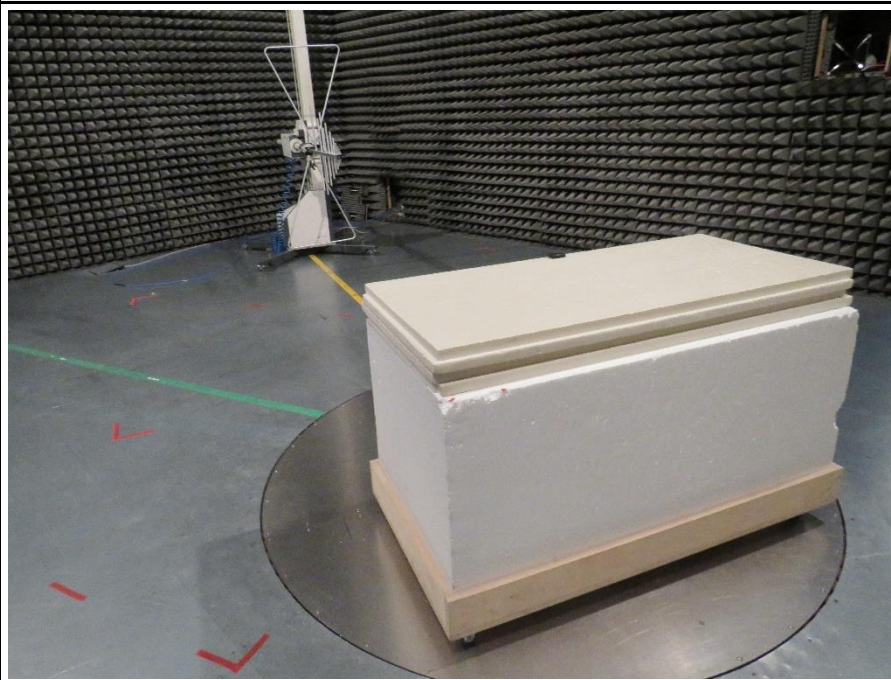
2.1.7 Setup Photos



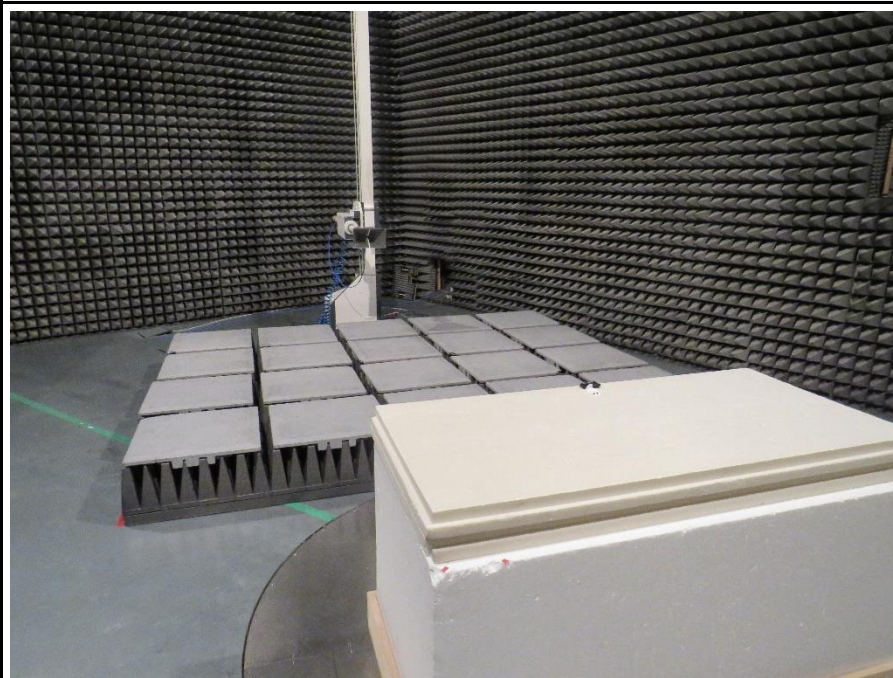
TEST SETUP EUT 1 AC6 – FOCUS



TEST SETUP EUT 2 AC1 – 30 MHz to 1000 MHz



TEST SETUP EUT 2 AC1 – 1000MHz to 2000MHz



TEST SETUP EUT 2 AC1 – FOCUS

