

Dual
myAquaSolar





8498

Follow us on




www.claber.com

CLABER


CLABER SPA - Via Pontebbana, 22 - 33080 Fiume Veneto PN - Italy
Tel. +39 0434 958836 - Fax +39 0434 957193
info@claber.com - www.claber.com

TECHNICAL DATA								
Power supply						solar powered		
Irrigation cycles with maximum charge						20		
Degree of protection						TBD		
Operating temperature						3 - 50 °C		
Operating pressure						MIN: 0,5 bar MAX: 10 bar		
Plastic materials						>ABS< - >PC< >POM< - >TPE<		
Water pressure table								
Bar	0,5	1	2	2,5	3	4	5	
l/min	16	20	28	30	32	38	42	


GENERAL INFORMATION



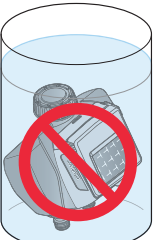
NO FROST



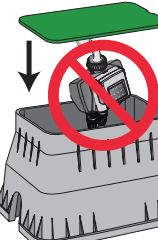
NOT SUITABLE
FOR CHILDREN



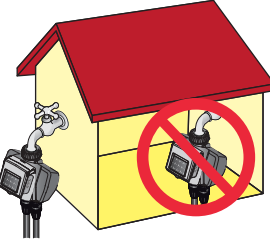
OUTDOOR



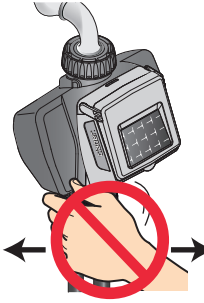
DO NOT PUT
UNDER WATER



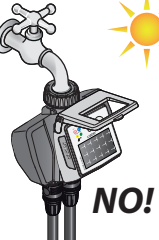
DO NOT INSTALL
IN THE VALVE BOX




TO BE INSTALLED
OUTDOORS




Always keep the cover closed



NO!



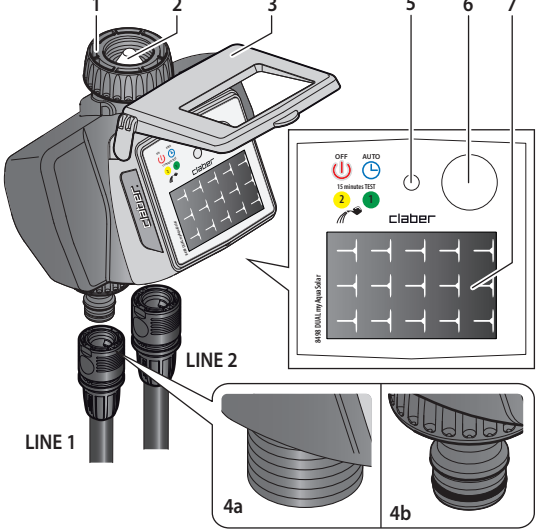
OK!



FILTERED
WATER

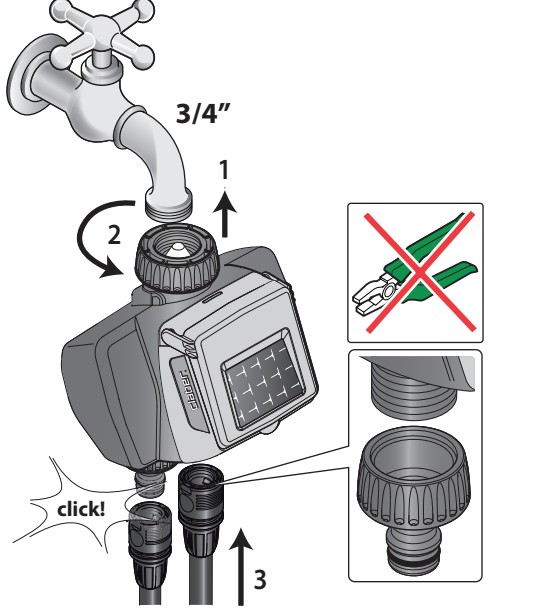
Use water from the mains tap or filter the water before using it

DESCRIPTION

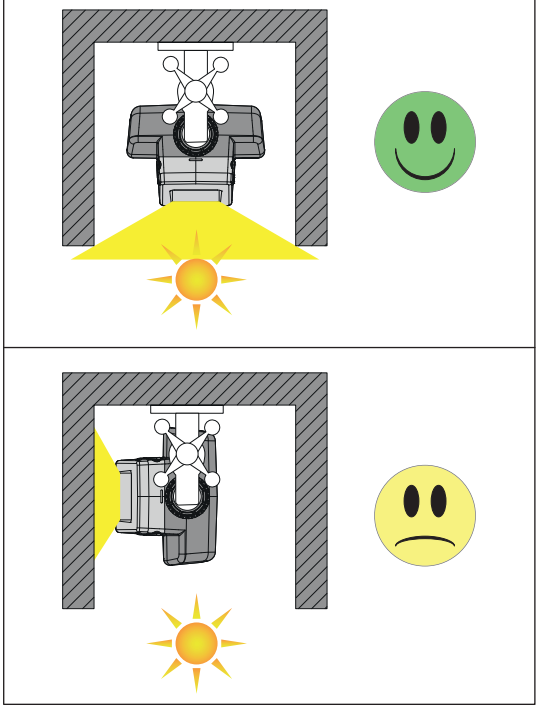


1 3/4" tap connector F with screw collar
2 Inspectable and washable filter
3 Protective cover
4a 3/4" M threaded connector
4b Quick-Click male connector
5 LED:
● automatic watering active
● watering in progress on line 1
● watering in progress on line 2
● no automatic watering
6 Function/colour selection button
7 Photovoltaic panel

INSTALLATION

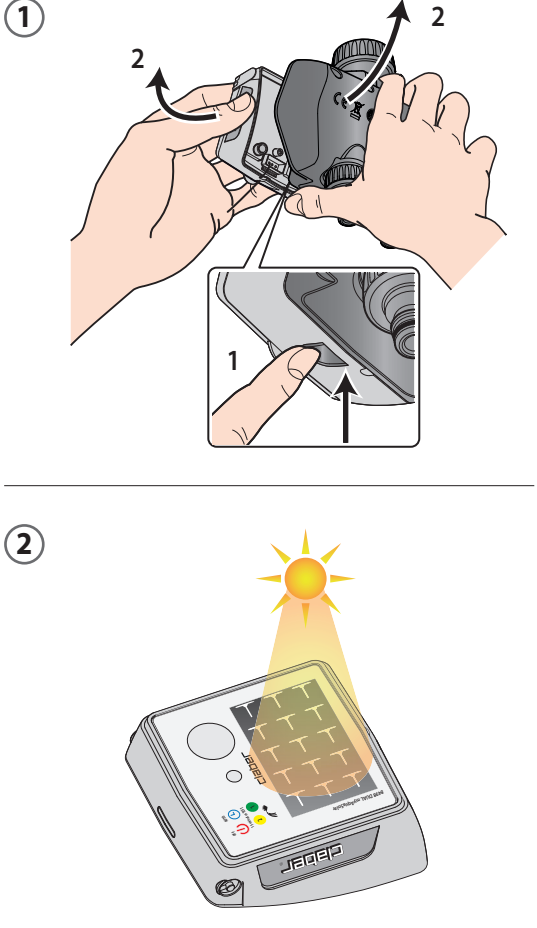


1 3/4" tap connector F with screw collar
2 Inspectable and washable filter
3 Protective cover
4a 3/4" M threaded connector
4b Quick-Click male connector
5 LED:
● automatic watering active
● watering in progress on line 1
● watering in progress on line 2
● no automatic watering
6 Function/colour selection button
7 Photovoltaic panel



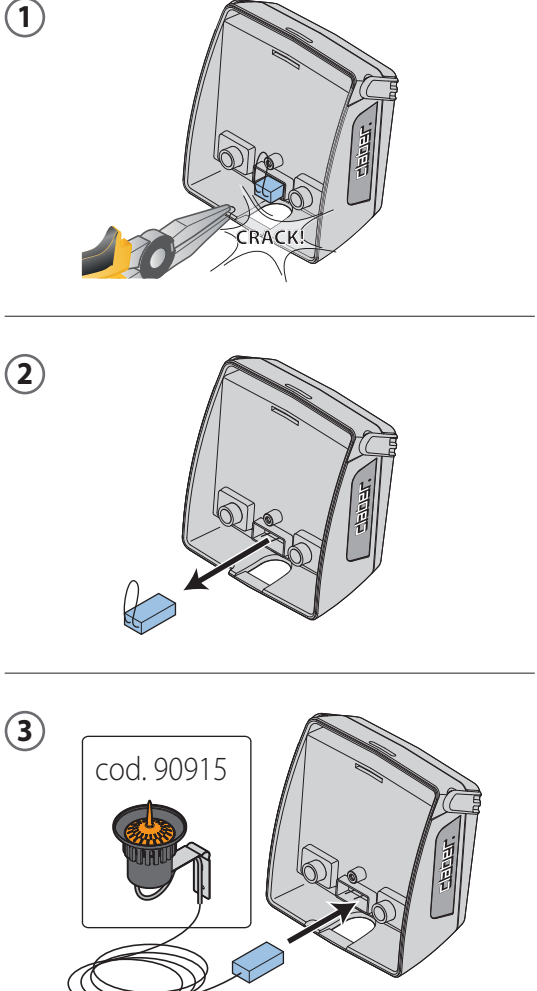
UK Do not install the water timer inside valve boxes, below ground level or indoors. Do not use the water timer with operating pressures lower than 0.5 bar (7.3 psi) or higher than 10 bar (145psi). Once the timer is installed, make sure that the photovoltaic panel is pointed in the direction of the open area from which most light comes during the day. This is to ensure it charges correctly.

FIRST START-UP



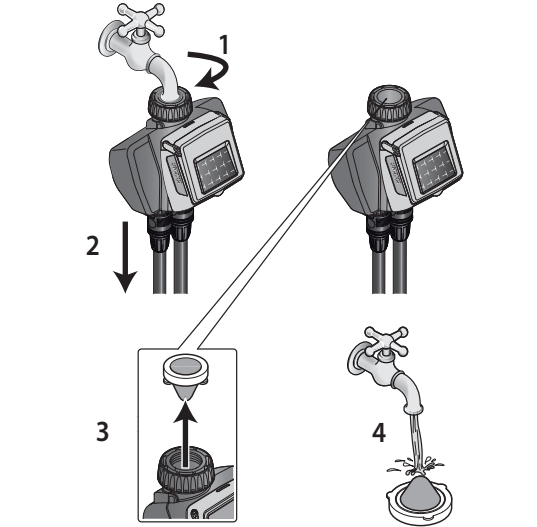
1 The timer is ready for use only if it has enough internal charge. To make sure that it is charged correctly before use, disconnect the front control unit and put it in the sun. Make sure you have installed the myAquaSolar app and paired the timer (as described in the USE section). The app will provide information about the charge status and the time remaining until charging is completed (from 30 to 90 minutes depending on how strong the light is). Once it is fully charged, the timer can be used to its full potential.

RAIN SENSOR (optional)



1 With the help of small pliers, break the plastic plug for preparing the slot of the Rain Sensor cable (1). Remove the bridge connector on the timer (2) and insert the Rain Sensor connector (3). The timer checks the sensor status every 30 seconds: if the container is full (rainfall of at least 5 mm), the valve will stay closed, otherwise the valve is opened automatically during the times set. Manual opening of the valve, using either the button or the app, is always enabled.

MAINTENANCE



1 Turn the tap handle to the 'on' position.
2 Turn the tap handle to the 'off' position.
3 Turn the tap handle to the 'on' position.
4 Turn the tap handle to the 'off' position.

TRADEMARK ATTRIBUTION FOOTNOTE

UK The Bluetooth® word mark and logos are registered trademarks owned by Bluetooth SIG, Inc. and any use of such marks by Claber S.p.A. is under license. Other trademarks and trade names are those of their respective owners.

WARNING

UK Read this instruction manual carefully and keep it handy for future reference. This device has been designed and manufactured exclusively for the setting of watering time by adults with experience and knowledge. Any use other than that described in this manual is considered improper: the manufacturer acknowledges no liability for damages arising from improper use, which will also void the warranty.

Do not power the water timer with sources other than those specified. It is good policy - when the water timer is used for the first time - to make certain that the programmes run correctly. Do not use the water timer with chemicals or liquids other than water.

At the end of the season, before the winter frosts, disconnect the timer from the tap and store the timer in a sheltered place, away from damp, where the temperature does not fall below 3°C.

RAEE DISPOSAL

UK The symbol in question applied to the product or the packaging indicates that the product must not be considered as normal domestic waste, but must be taken to a special centre for the collection and recycling of waste electrical and electronic equipment. Take care to dispose of this product in the proper way; this will help to avoid the negative consequences that could arise from unsorted collection or dumping. For more detailed information on the recycling of this product, contact the municipal authority, the local refuse collection service or the dealer from whom the item was purchased.

CE UK CA

Declaration of Conformity
Claber S.P.A. Via Pontebbana, 22 - 33080 - Fiume Veneto - Pordenone - Italy

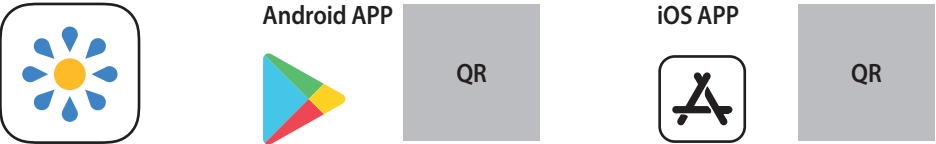
TBD

USE

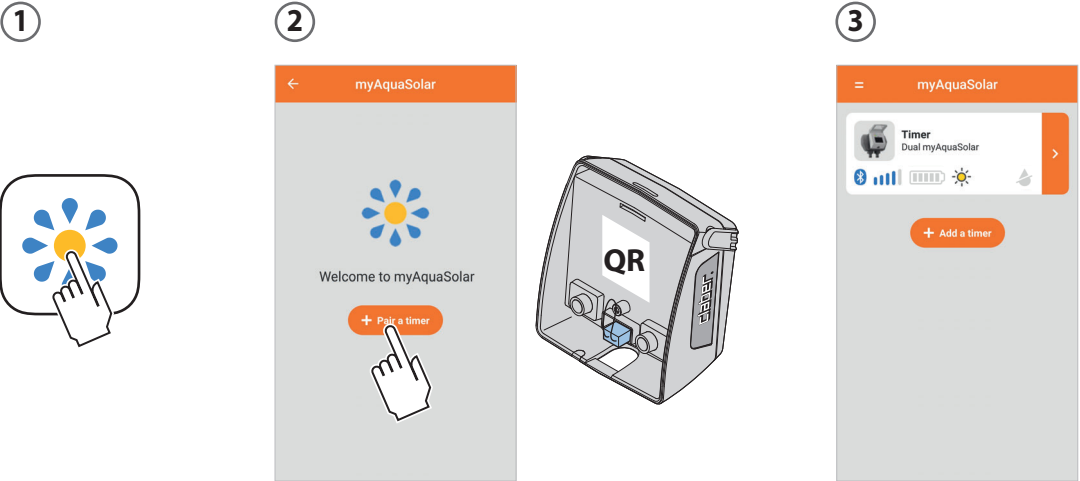
1 APP MYAQUASOLAR

UK Download the myAquaSolar app from the Play Store for Android devices or the App Store for Apple devices to start using the Dual myAquaSolar.
Minimum Android version required: 10.
Minimum iOS version required: 8.

Download the app

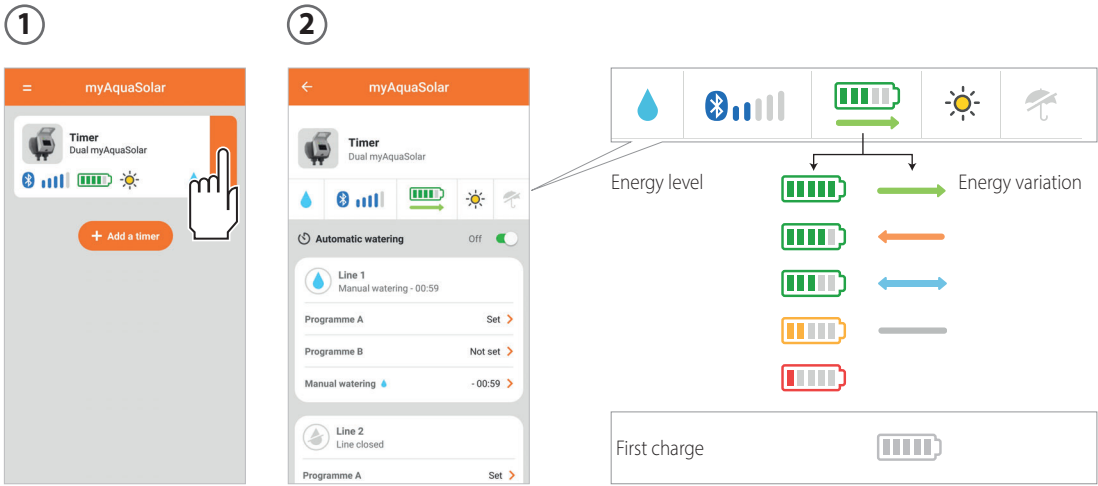


2 CONNECTION



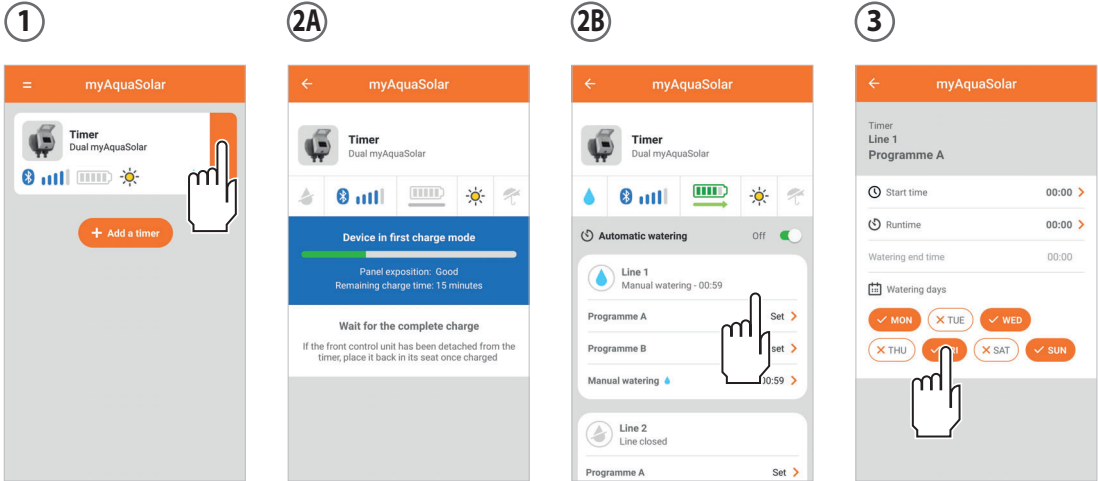
UK During the communication between the app and the timer, you have to be within a range of 10 m from the timer.
Open the myAquaSolar app. N.B. these operations will require the use of Bluetooth® technology.
From the app's main screen, press pair a timer.
Enter the numerical code or scan the QR code inside the control unit.
The timer profile will appear on the main page of the app.
N.B. the myAquaSolar app can manage up to 4 timers.
To check the timer status, make sure you are in a well-lit area.
The Bluetooth® icon on the timer profile shows whether it can be reached (blue) or not (grey). If the icon is grey, the timer might not have enough light, it might not be charged (follow the instructions in FIRST START-UP), or it might need to be nearer to the smartphone.

3 TIMER STATUS



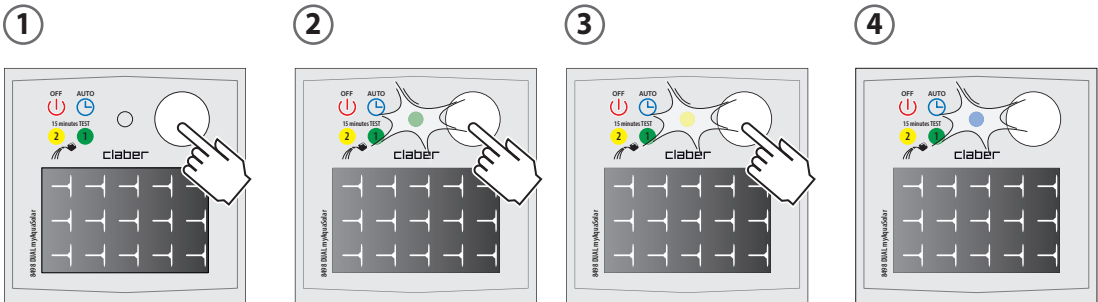
UK Select the timer profile to see information on its status on the top bar: watering in progress, Bluetooth® signal, energy level and variation or first charge (during FIRST START-UP), solar irradiation and Rain Sensor.
Energy level and variation are particularly important.
There are 5 energy levels. If the energy level goes into energy saving, the timer will still guarantee automatic watering cycles for at least 1 day. When there isn't enough energy, all the functions will be disabled. The date and time are saved in the memory for approximately 16 hours before the timer turns off. If the timer turns off, or may have turned off, tap the profile in the app. The timer will update automatically with the current date and time. If it is during the first charge, wait (FIRST START-UP).
The energy variation supplies information on how good the installation is, showing whether the charge accumulated by the timer over time is positive, balanced or negative. If the level continues to go down, consider installing the timer in a different place else or adjusting the angle (see INSTALLATION).

4 AUTOMATIC PROGRAMMING



UK (1) Tap the timer profile to start programming.
(2A) If the timer is not sufficiently charged, the app will notify you. Wait for charging to complete, making sure the photovoltaic panel is directly exposed to the sun to speed up the process (FIRST START-UP).
(2B) If the timer is sufficiently charged, you can enable/disable automatic watering, set/change the watering programmes or activate manual watering. To enable automatic watering, make sure the switch is ON. Dual myAquaSolar offers 2 irrigation programmes, A and B, for each line.
(3) You can set a start time, duration (from 1 minute to 3 hours and 59 minutes) and the days of the week you want to irrigate on for each programme.

5 MANUAL WATERING



UK You can run manual irrigation from the myAquaSolar app or directly from the timer.
To activate manual watering from the app, proceed as for automatic programming, this time selecting the manual opening option, setting the watering time (from 1 minute to 3 hours and 59 minutes), and confirming.
To activate manual irrigation from the timer, repeatedly press the Dual myAquaSolar button until the LED flashes green or yellow, according to the desired line. In this case, manual irrigation will run for 15 minutes on the chosen line. To pause it before it is finished, repeatedly press the timer key to set the desired status: automatic watering on (blue LED flashes) or no automatic watering (red LED flashes).



UK **The Bluetooth® icon stays grey.**
If the timer is in a well-lit area and the smartphone is near it but the situation does not change, select the timer from the app, then edit and delete it. Repeat the PAIRING procedure.

What happens if I delete a timer from the myAquaSolar app?
A timer deleted from the app continues the automatic watering cycles set but will no longer appear on the app's main screen.

Watering will not start.
Check the tap is turned on, the timer is not in the first charge stage and has sufficient charge, and the watering programmes are correctly set and enabled.

The irrigation cycles start at different times than those set by the myAquaSolar app.
Tap the timer profile in the app. The timer will update automatically with the current date and time. Check the watering programmes set.

Can I stop a manual irrigation cycle before the end?
Yes, from the manual watering page on the myAquaSolar app by tapping STOP, or from the timer, by repeatedly pressing the button until the desired status is set: automatic watering on (blue LED flashes) or no automatic watering (red LED flashes).

Can I stop an automatic irrigation cycle before the end?
Yes, from the myAquaSolar app by moving the Automatic Watering switch to OFF (to return to Automatic Watering, switch it back to ON), or from the timer, by repeatedly pressing the button until the no automatic watering status is set (red LED flashes). To return to automatic irrigation cycles, repeatedly press the timer button until the blue LED flashes.

Can I run automatic and manual irrigations at the same time?
No. During manual irrigation, automatic irrigation cycles are deactivated.

While an automatic irrigation cycle is running on one line, can I start manual irrigation on the other?
Yes, but automatic irrigation will be interrupted.

While a manual irrigation cycle is running on one line, can I start manual irrigation on another?
Yes, but the second manual opening will close the line that was open previously.

The timer behaves abnormally.
Restart the timer by holding down the button for 20-30 seconds until the LED stops flashing. Make sure it is in a well-lit area and repeatedly press the button to set the desired status: automatic watering on (blue LED flashes) or no automatic watering (red LED flashes).

FCC Caution:
This device complies with part 15 of the FCC Rules. Operation is subject to the following two conditions:(1) this device may not cause harmful interference, and (2) this device must accept any interference received, including interference that may cause undesired operation.
Any changes or modifications not expressly approved by the party responsible for compliance could void the user's authority to operate the equipment.
NOTE: This equipment has been tested and found to comply with the limits for a Class B digital device, pursuant to Part 15 of the FCC Rules. These limits are designed to provide reasonable protection against harmful interference in a residential installation. This equipment generates, uses and can radiate radio frequency energy and, if not installed and used in accordance with the instructions, may cause harmful interference to radio communications. However, there is no guarantee that interference will not occur in a particular installation.
If this equipment does cause harmful interference to radio or television reception, which can be determined by turning the equipment off and on, the user is encouraged to try to correct the interference by one or more of the following measures:
→ Reorient or relocate the receiving antenna.
→ Increase the separation between the equipment and receiver.
→ Connect the equipment into an outlet on a circuit different from that to which the receiver is connected.
→ Consult the dealer or an experienced radio/TV technician for help.
To maintain compliance with FCC's RF Exposure guidelines, This equipment should be installed and operated with minimum distance between 20cm the radiator your body. Use only the supplied antenna.