

INSTALLATION MANUAL

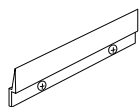
LED Bathroom Mirror with Bluetooth

CONTACT US

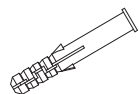
Thank you for shopping with us! We hope that our products have added a touch of brightness to your life. If you need any assistance, please don't hesitate to reach out. Our dedicated team is available 24/7 to ensure your satisfaction.

✉ BM@ZRSupport.com ☎ 1-888-204-3326 📱 ZRSupport

ACCESSORIES LIST



Bracket



Wall Anchor-A



Wall Anchor-B

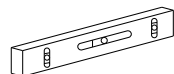


Short Screw



Long Screw

TOOLS REQUIRED



Level Ruler



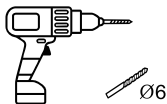
Marker



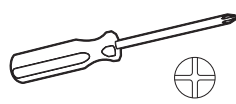
Hammer



Tape Measure



Electric Drill



Phillips Screwdriver



Safety Goggles

BEFORE INSTALLATION

To ensure the best experience, **please read carefully and follow the instructions provided below before assembling and installing the product.**

1. Important Safety Instructions:

- Assemble the product by two or more adults to ensure proper installation.
- To connect the wires to electrical junction box, consultation with a qualified technician or electrician is highly recommended.
- Disconnect power before installing, adding, or changing any components.
- Make sure that the fixing location can support the weight of the entire fixture .
- To prevent injury, the mirror must be installed according to the instructions provided.

2. Pre-assembly:

- Inspect the product immediately upon receipt for any transit damage or missing parts.

- The voltage for your product should be between 100V and 120V.

If the voltage exceeds 120V, please use a transformer.

- Please do not remove the plastic corner guards and transparent film on the mirror until the installation is finished.

3. Before Installation:

- Please check and make sure that the mirror is functioning properly.

• Power Check

After powering on, the backlight of two buttons will activate automatically.

• Touch Switch

There are two editions of our LED bathroom mirrors: those with a single color temperature and those with three color temperatures. A long press in standby mode will turn off the indicator light.

If the mirror you purchased is three-color temperature edition, the touch switch works as follows:

The button controls the light brightness and color temperature. Keep holding it and the brightness will change. You can adjust the color temperature as well: the first tap is white light, the second one is warm light, and the third one is natural light. If no button is pressed within 15 seconds, the next tap will turn off the light immediately.

If the mirror you purchased is single-color temperature edition, the touch switch works as follows:

The button controls the light brightness. Keep holding it to adjust the brightness level.

• Memory Function

Your current settings will be saved, and it will resume in the same settings when you turn it on again.

If the mirror you purchased is not anti-fog edition, then there will be no anti-fog button as below:

• Anti-fog

The anti-fog function helps resist the troubling fog and keep a clear reflection image. To save energy, it will automatically turn off after one hour. A long press in standby mode will turn off the indicator light.

• Bluetooth

1. Turn on the mirror;
2. Connect "Mirror Multimedia" through the mobile phone's bluetooth function;
3. Play the songs in your mobile phone.

A long press in standby mode will turn off the indicator light.

NOTE:

Changes or modifications not expressly approved by the party responsible for compliance could void the user's authority to operate the equipment. FCC Radiation Exposure Statement This device complies with FCC RF radiation exposure limits set forth for an uncontrolled environment. This transmitter must not be co-located or operating in conjunction with any other antenna or transmitter.

FCC STATEMENT

This device complies with Part 15 of the FCC rules. Operation is subject to the following two conditions:

1. This device may not cause interference.
2. This device must accept any interference, including interference that may cause undesired operation of the device.

NOTE:

This equipment has been tested and found to comply with the limits for a Class B digital device, pursuant to part 15 of the FCC Rules. These limits are designed to provide reasonable protection against harmful interference in a residential installation. This equipment generates uses and can radiate radio frequency energy and, if not installed and used in accordance with the instructions, may cause harmful interference to radio communications. However, there is no guarantee that interference will not occur in particular installation. If this equipment does cause harmful interference to radio or television reception, which can be determined by turning the equipment off and on, the user is encouraged to try to correct the interference by one or more of the following measures:

- Reorient or relocate the receiving antenna.
- Increase the separation between the equipment and receiver.
- Connect the equipment into an outlet on a circuit different from that to which the receiver is connected.
- Consult the dealer or an experienced radio/TV technician for help.

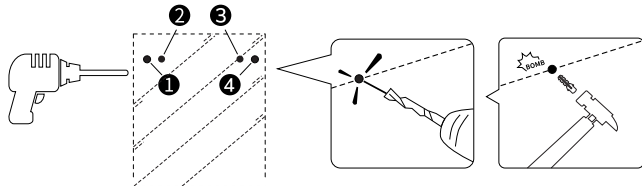
This device must operate with a minimum distance of 20 cm between the radiator and user body.

INSTRUCTIONS

1. Confirm the locations of four drill holes with the positioning ruler provided, and mark them on the wall.



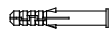
2. Use an electric drill to punch holes at the marked spots, and then apply wall anchors with a hammer.



Thickness of Wall

Recommended Drill Bit

> 16mm



1/4" (6mm) drill bit, drilling depth in 1 31/32" (50mm)

8 ~ 16mm



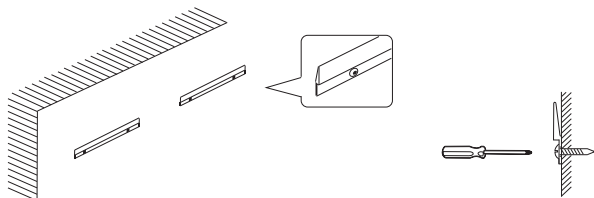
25/64" (10mm) drill bit

< 8mm

Unapplicable

Note: Please wear goggles and pay attention to safety.

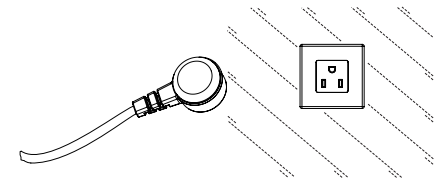
3. Screw the two brackets to the wall.



4. Connect the power by plugging into an outlet or hardwired to a standard circuit panel.

• Option 1: Plug-in

After hanging the mirror securely, plug the power cable to a standard socket.



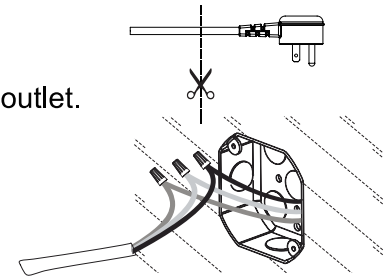
• Option 2: Hardwired

Cut the head off the plug and hardwire it into an outlet.

Black wire --- power supply L (LIVE)

White wire --- power supply N (NEUTRAL)

Green wire --- power supply E (EARTH)



! WARNING: This mirror must be earthed.

! REMINDER: Please make sure the power is cut off before installation.

5. Place the mirror against the wall, align the hook with the mounted bracket, slowly lower the mirror down, and make sure that it slots into the right position and hangs securely.

