

## ComXim intelligent turntable instruction



Used for product rotation display  
360 degree shooting  
3D scanning

- ① Plug in power supply and turn on the turntable.
- ② Use the remote control to control the rotation modes, rotation speeds and rotation angles.)
- ③ This Series of electric turntables support 3 rotation modes: continuous, intermittent and left-and-right swing.

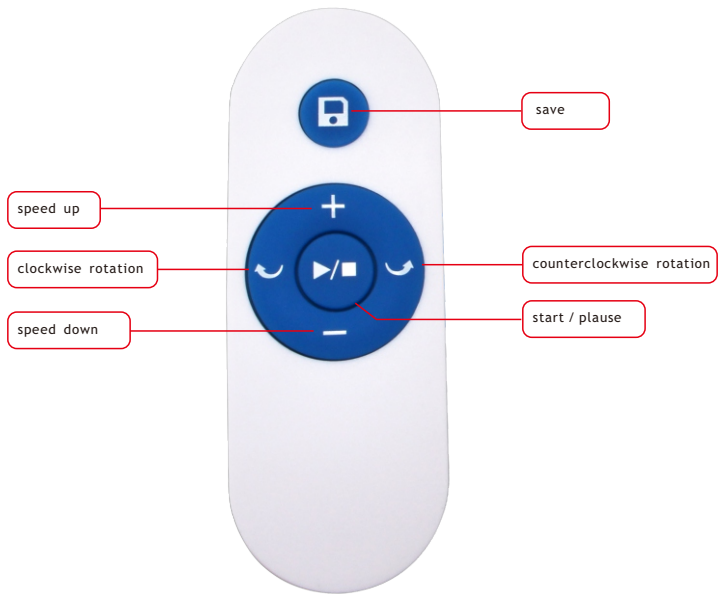
## ● Product parameters

Item No.	Voltage	Speed (S/Lap)	Max Load (Kg)
MT200RL20x	100V - 240vAC	20-68(S/Lap)	20 Kg
MT320RL40x	100V - 240vAC	25-72(S/Lap)	40 Kg
MT350RL40x	100V - 240vAC	28-74(S/Lap)	40 Kg
MT400RL40x	100V - 240vAC	27-76(S/Lap)	40 Kg
NT400RL40x	100V - 240vAC	25-72(S/Lap)	40 Kg
MT500RL200x	100V - 240vAC	34-90(S/Lap)	200 Kg
NT600RL200x	100V - 240vAC	34-90 (S/Lap)	200 Kg
MT800RL300x	100V - 240vAC	55-140(S/Lap)	300 Kg

## ● MT Series turntable model naming rules, identification and main characteristics

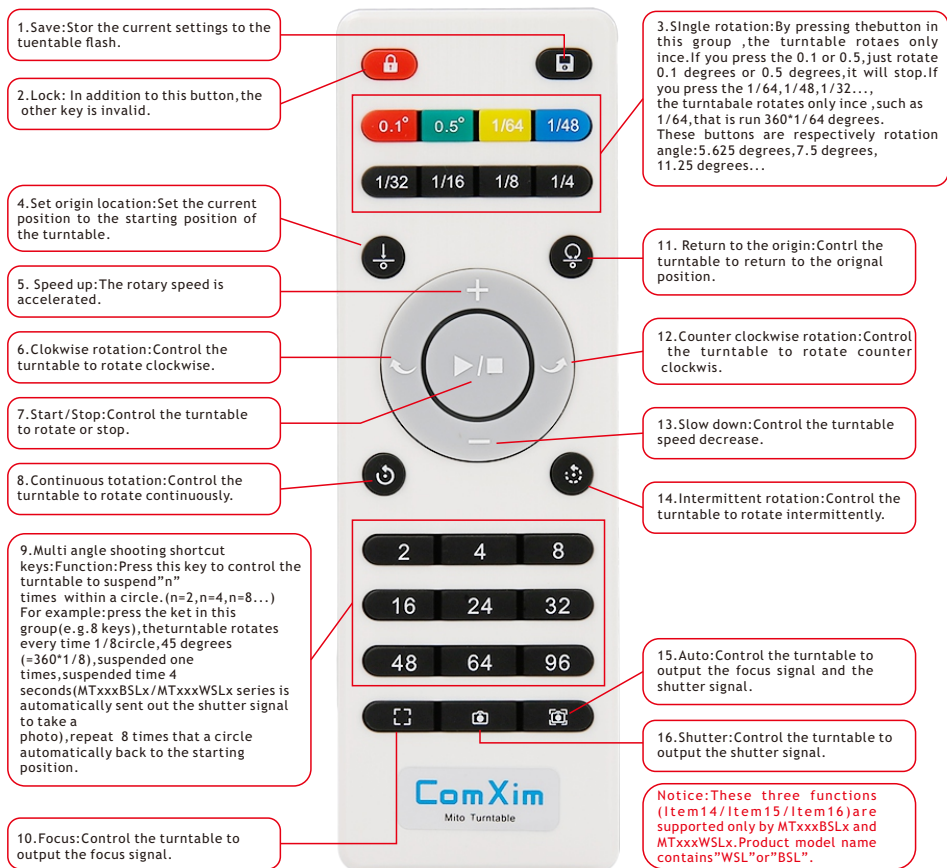
<u>MT</u>	<u>200</u>	<u>RL</u>	<u>L20</u>	<u>X</u>
	<u>320</u>	<u>RL</u>	<u>L40</u>	
Series	Turntable	Sub code	Max Load	International or color
name	Model	R: Remote control	(Kg)	
	code			
	Diameter			
	(cm)			

## • Small remote controller instructions



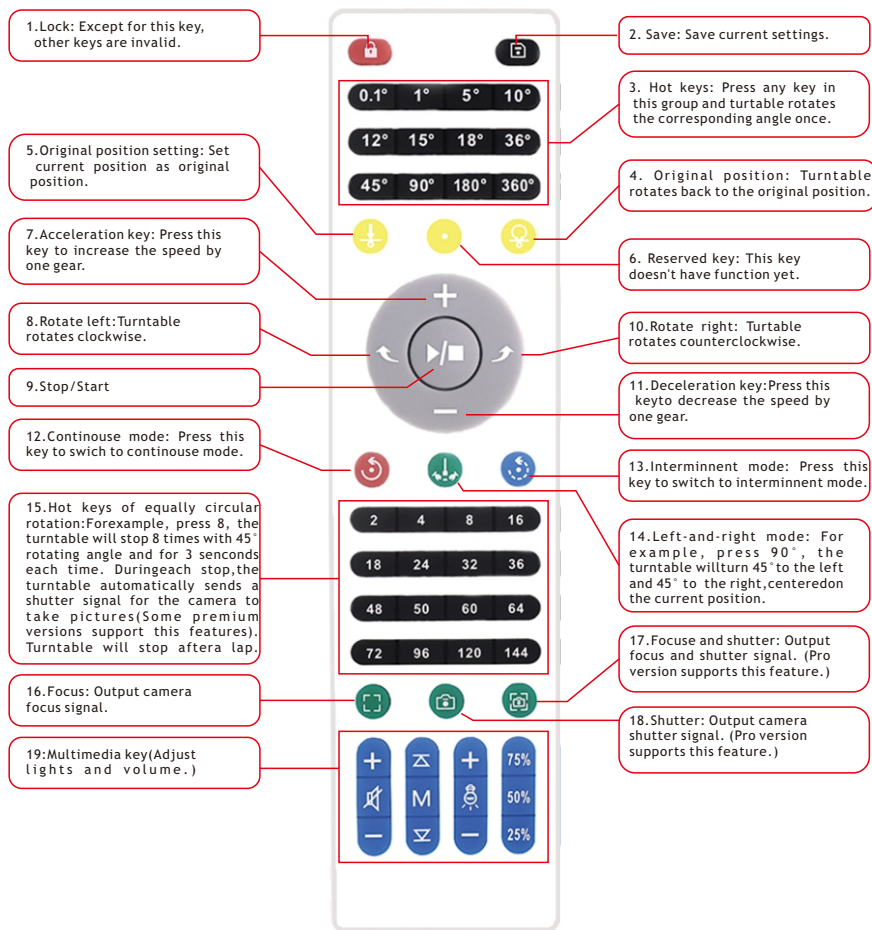
**Note:ACR2025 button battery is used to provide power for the remote controller.**

# • Medium remote controller instructions



**Note: AAA battery is used to provide power for the remote controller.**

# • Large remote controller instructions



**Note:** AAA battery is used to provide power for the remote controller.

## ● Plrecautions

- ①Attention: Electric turntables are of electric products. They are Not waterproof and not heat resistant.
- ②In cases when turntable doesn't work, please check whether the turntable is powered on, whether the power cord is plugged in tightly, and whether the switch is turned on. If the turntable still cannot work normally, please contact us.
- ③The load-bearing capacity of the turntable refers to the maximum load that the turntable can bear when the item is smaller than the diameter of the turntable. If the item exceeds the diameter of the turntable, the load-bearing capacity will be greatly reduced, and even it will not turn.
- ④In order to prolong the service life of the turntable, it is recommended to stop for 2 hours after working continuously for 8 hours.
- ⑤In order to protect the safety of users, unauthorized modification or repair of the product is prohibited. Please contact us if necessary.

## ● Notes



§ 15.19 Labelling requirements. This device complies with part 15 of the FCC Rules. Operation is subject to the following two conditions: (1) This device may not cause harmful interference, and (2) this device must accept any interference received, including interference that may cause undesired operation.

§ 15.21 Information to user. Any Changes or modifications not expressly approved by the party responsible for compliance could void the user's authority to operate the equipment.

§ 15.105 Information to the user. Note: This equipment has been tested and found to comply with the limits for a Class B digital device, pursuant to part 15 of the FCC Rules. These limits are designed to provide reasonable protection against harmful interference in a residential installation. This equipment generates uses and can radiate radio frequency energy and, if not installed and used in accordance with the instructions, may cause harmful interference to radio communications. However, there is no guarantee that interference will not occur in a particular installation. If this equipment does cause harmful interference to radio or television reception, which can be determined by turning the equipment off and on, the user is encouraged to try to correct the interference by one or more of the following measures: -Reorient or relocate the receiving antenna. -Increase the separation between the equipment and receiver. -Connect the equipment into an outlet on a circuit different from that to which the receiver is connected. -Consult the dealer or an experienced radio/TV technician for help.

\*RF warning for Mobile device: This equipment complies with FCC radiation exposure limits set forth for an uncontrolled environment. This equipment should be installed and operated with minimum distance 20cm between the radiator & your body.