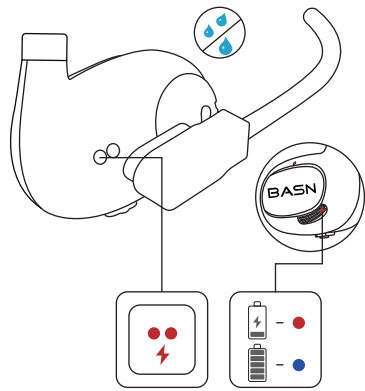
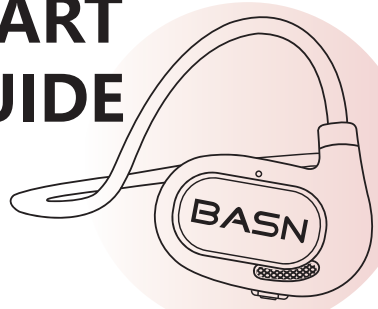
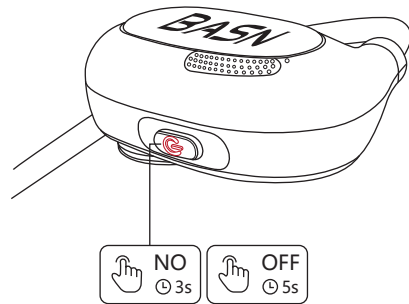




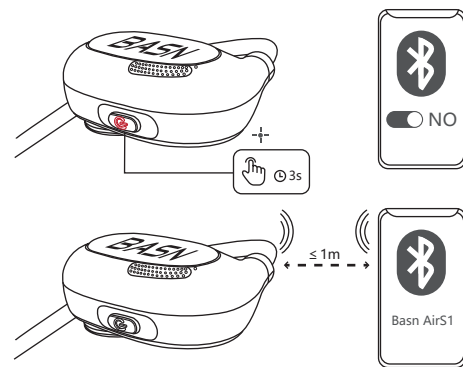
BASN AirS1 QUICK START GUIDE



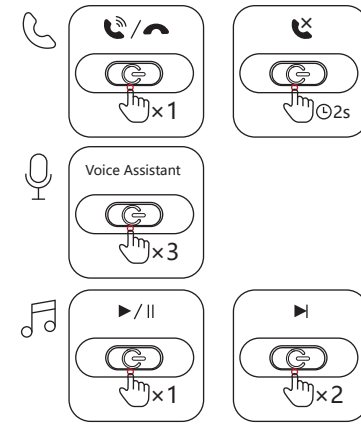
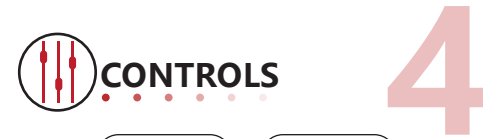
Fully dry off the USB charging port before charging.



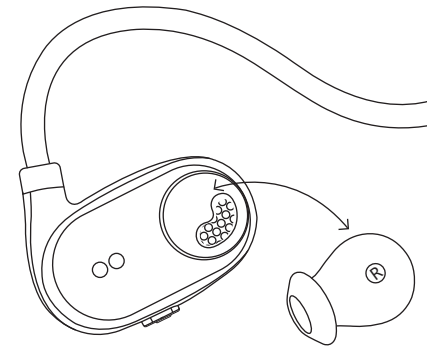
Hold down the power button for 3 seconds to power on, and hold down the power button again for 5 seconds to power off.



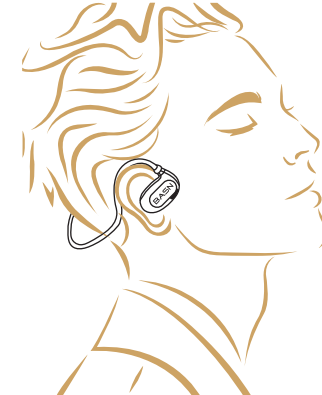
When the headset is turned off, press and hold the power button for 3 seconds until the red and blue indicators flash alternately to enter the Bluetooth connection mode.



x1: Press once x2: Press twice x3: Press 3 times
⌚2s: Press and hold for 2 seconds



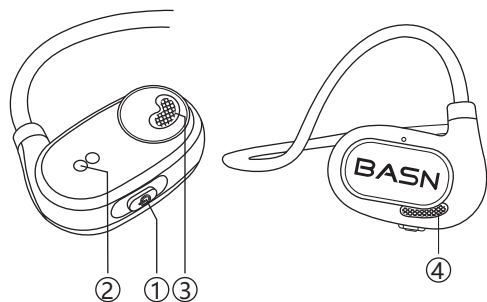
For better noise isolation, please put on the ear tips.



For better listening experience, please adjust the wearing angle when using the headsets.

Product Overview

- Headphone
- USB Charging Cable
- Quick Start Guide



1. Multi Function Button (MFB)
2. Charging Contact
3. Microphone
4. LED Indicator

Power/Charging

For better enjoyment, fully charge the headphone before use. A USB-C charging cable (charge only) is included for standard USB compatible device. Please use a 5V/1A or above power adapter (not included).

Caution:

- Use compatible standard 5 volt power adapter ONLY.
- Other incompatible chargers may cause damages.
- Do not use if the connector or device is wet or damaged.

Power On/Off

To turn on the headphone, press and hold the Power On/Off Button (MFB) for 3 seconds, you will hear a power on tone. To turn off the headphone, press and hold the Power On/Off Button (MFB) for 5 seconds, you will hear a power off tone. Caution: If no Bluetooth device is connected, the headphone will turn off in 5 minutes with a voice prompt "Power off".

Pairing

When power on, the headphone will automatically enter pairing mode for connection, turn on Bluetooth function on your phone and search for "Basn AirS1" for pairing. When the headphone is connected, a prompt tone "connected" will be heard, the blue indicator will flash every 5 seconds.

Music

Play/Pause: Short press the MFB once time to play or pause. Next song: Short press MFB 3 times.

Call

Answer call: Short press the MFB once time. Reject call: Press and hold the MFB for about 2 seconds. End call: Short press the MFB.

Reset Paired Device List

When headphone is off, press and hold the MFB for 5 seconds to reset paired device.

LED Indicator Guide

Status	Description	Voice Prompt
Power On	Blue light on (for one second)	Power on
Power Off	Red light on (for one second)	Power Off
Pairing	Red and blue indicators flash alternately	Pairing
Bluetooth Connected	Blue light flashes every 15 seconds	Connected
Battery low	Red light flashes every 5 seconds	Alarm sound
Charging	The red lights up during charging, and blue light turns on when the battery is fully charged	-

Cautions

- Self replacement of battery is prohibited.
- Do not expose battery (battery pack or battery pack combination) in direct sunlight, fire or high temperatures.

Specifications

Bluetooth Version: 5.3
Bluetooth Profiles: HFP/HSP/AVRCP/A2DP
Audio Codec: /AAC, SBC
Noise Cancellation: 2 ENC MEMS Microphone
Range: up to 12m
Headset Battery: 70mAh

FCC Statement

This device complies with part 15 of the FCC Rules. Operation is subject to the following two conditions: (1) this device may not cause harmful interference, and (2) this device must accept any interference received, including interference that may cause undesired operation. Any changes or modifications not expressly approved by the party responsible for compliance could void the user's authority to operate the equipment.

NOTE: This equipment has been tested and found to comply with the limits for a Class B digital device, pursuant to Part 15 of the FCC Rules. These limits are designed to provide reasonable protection against harmful interference in a residential installation. This equipment generates, uses and can radiate radio frequency energy and, if not installed and used in accordance with the instructions, may cause harmful interference to radio communications.

However, there is no guarantee that interference will not occur in a particular installation. If this equipment does cause harmful interference to radio or television reception, which can be determined by turning the equipment off and on, the user is encouraged to try to correct the interference by one or more of the following measures:

- Reorient or relocate the receiving antenna.
- Increase the separation between the equipment and receiver.
- Connect the equipment into an outlet on a circuit different from that to which the receiver is connected.
- Consult the dealer or an experienced radio/TV technician for help.

The device has been evaluated to meet general RF exposure requirement. The device can be used in portable exposure condition without restriction.

FCC ID: 2BAYG-AIR23



www.basnaudio.com

We greatly value your satisfaction at BASN.

If you have any questions, please contact us

Email: support@basnaudio.com

Designed by BASN in California