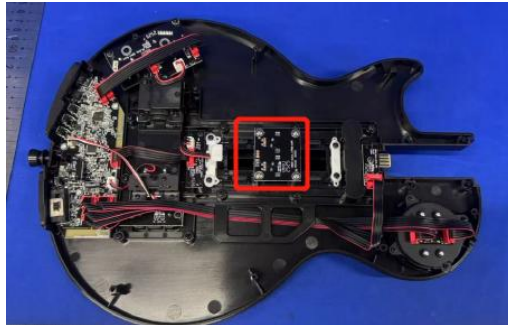
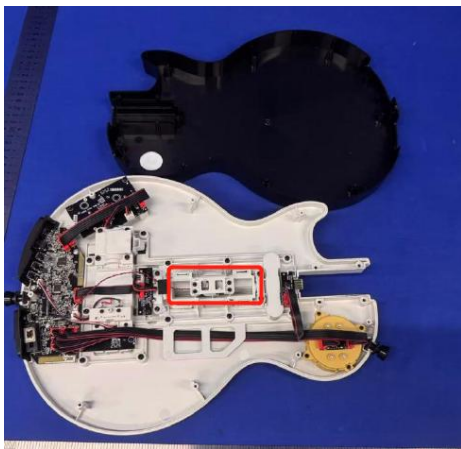


Declaration

2025-09-10

We, Freemode Go LLC dba CRKD the undersigned hereby declare that the device's (FCC ID: 2BAXLCK25GX, IC: 30307-CK25GX) schematics, PCB layout and all other electrical aspects of the device are identical. The only differences are below.

The difference of Strum bar (strum bar) : The blue version uses a Hall switch to achieve the up and down playing function (with a linear motor to simulate the string vibration effect of playing), while the black version uses two mechanical switches to achieve the up and down playing function (simply simulate the string vibration effect of playing by mechanical switches).



Signature: 

Name: Stephen Withers

Applicant: Freemode Go LLC dba CRKD

Address: 3142 Constitution drive , Livermore, California, United States

TEL: +1 925 344 4045