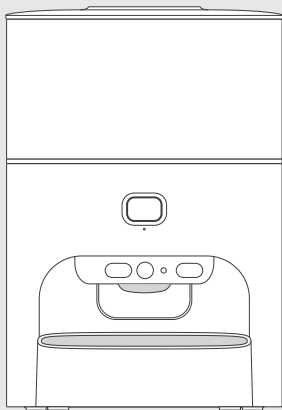




PET MARVEL®



Smart Pet Feeder [Cubie M3 Pro]

Welcome

Great thank you for choosing us!

This manual is hereby to guide you to fully understand and quickly install this product, meanwhile provide detailed information about usage and maintenance to help you achieve the best product experience.

If you have any questions during use, please feel free to contact User Service Department:

✉ customerservice@petmarvel.com

Or directly contact the distributor who you bought this product from.

Scan the QR code below or search "PET MARVEL" in App Store/Google Play to download our App to unlock more features.



Scan to download App



Scan to view tutorials on use

TECHNOLOGY
CARES FOR PET
HEALTH

1 User's Guide

Read this manual carefully before using the product and keep it properly.

Warnings:

Indoors use only. Do not use in places with direct sunlight such as balconies.

Do not place items other than pet dry food and freeze-dried food in the food bucket, as it may cause device malfunction or pose a risk of accidental pet ingestion.

Manage the power cord to prevent pets from biting it, which could lead to electric shock hazards.

Do not wash the device body directly with water to avoid damage to internal electronic components.

Notices:

To prevent pets from knocking over the device, place it in a corner or against a wall.

Do not disassemble, modify, or repair the device yourself, as this will void all warranty and after-sales service rights.

This device is compatible with dry pet food with a diameter of 15mm or less.

Do not place wet pet food to prevent blockage of the food dispensing channel and moisture damage to electronic components.

The shape and density of pet food particles affect the actual capacity of the food bucket; the weight per portion may vary depending on the food's density. If planning a short trip (e.g., business travel), load dry batteries into the device to prevent it from stopping working due to a temporary power outage at home.

This equipment has been tested and found to comply with the limits for a Class B digital device, pursuant to Part 15 of the FCC Rules. These limits are designed to provide reasonable protection against harmful interference in a residential installation. This equipment generates uses and can radiate radio frequency energy and, if not installed and used in accordance with the instructions, may cause harmful interference to radio communications. However, there is no

guarantee that interference will not occur in a particular installation. If this equipment does cause harmful interference to radio or television reception, which can be determined by turning the equipment off and on, the user is encouraged to try to correct the interference by one of the following measures:

- Reorient or relocate the receiving antenna.
- Increase the separation between the equipment and receiver.
- Connect the equipment into an outlet on a circuit different from that to which the receiver is connected.
- Consult the dealer or an experienced radio/TV technician for help.

"This device complies with part 15 of the FCC Rules. Operation is subject to the following two conditions: (1) This device may not cause harmful interference, and (2) this device must accept any interference received, including interference that may cause undesired operation."

Radiation Exposure Statement:

1. This equipment complies with FCC/IC radiation exposure limits set forth for an uncontrolled environment.

This equipment should be installed and operated with minimum distance 20cm between the radiator & your body.

2. The device has been evaluated to meet general RF exposure requirement.

① This appliance can be used by children aged from 8 years and above and persons with reduced physical, sensory or mental capabilities or lack of experience and knowledge if they have been given supervision or instruction concerning use of the appliance in a safe way and understand the hazards involved.

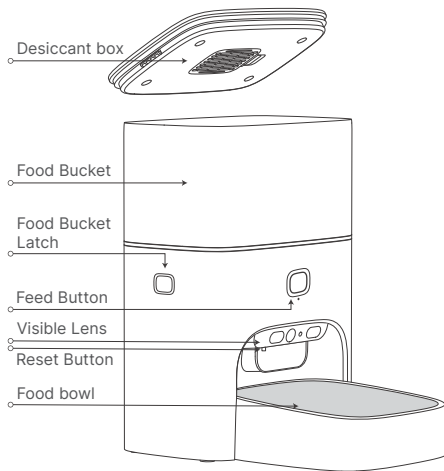
② Children shall not play with the appliance.

③ Cleaning and user maintenance shall not be made by children without supervision.

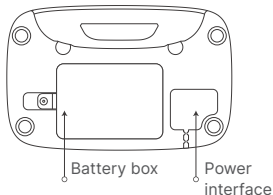
④ This appliance must only be supplied at safety extralow voltage corresponding to the marking on the appliance.

"Changes or modifications not expressly approved by the party responsible for compliance could void the user's authority to operate the equipment".

2 Product Introduction



Device bottom



Function Keys and Indicator Lights Description

Feed Button: Press twice to dispense two portions of food.

Reset Button: Press and hold for 7s to reset the network and camera.

Indicator Lights:

White blinking: Waiting to connect to the network

White: Connected to the network

White breathing: Device is upgrading

Orange blinking: Food bucket not installed

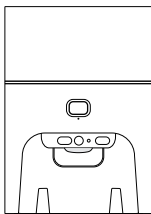
Orange: Food bucket is low on food

Red steady: Food jam/low battery/device malfunction

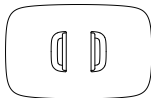
③ Package Contents

Note

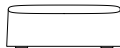
After opening the product package, check whether the product is intact and whether all accessories are complete according to the following list. Due to product updates, some accessories may be adjusted; please refer to the actual product.



Feeder body *1



Top cover *1



Food bowl *1



Stainless steel bowl *1



Product manual *1



Type-C power cord *1

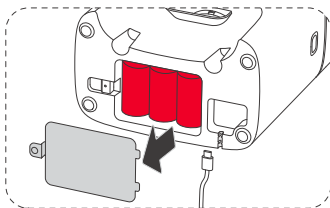


Desiccant *1

4 Product Usage

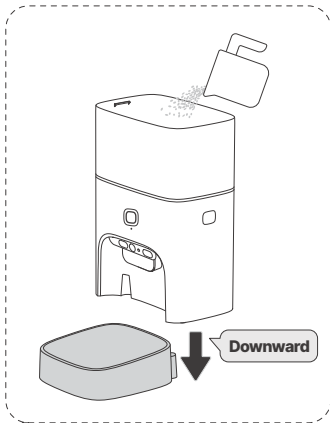
Product Assembly

1 Connecting the Power Adapter:
Connect the power adapter to the power port at the bottom of the device, then plug it into the socket. When you hear a short beep sound and the white indicator light blinks, the device is powered on successfully.



2 Replacing the Battery:
Open the bottom battery cover, replace with 3 new #1 batteries, then close the battery cover.

3 Assemble the food bucket, main unit, and food bowl as shown.



APP Download

❶ Scan the QR code shown or search for "PET MARVEL" in the App Store/Google Play Store to download the APP and register.

❷ Connect your phone to a 2.4GHz WiFi (5GHz bands and special certification WiFi such as hotel or airport networks are not supported). Avoid special characters in the WiFi name to prevent connection issues.

Device Networking and Use

❶ Open the "PET MARVEL" APP, bring the phone close to the device, follow the APP prompts to search and add the device, then operate according to the network configuration process interface guide. Scan the QR code shown to view the tutorial. Enable Bluetooth and location authorization on your phone.

❷ After successful network configuration, the device indicator light will be steady white. If network configuration fails, please be patient and try again, ensuring the WiFi password is entered correctly. If multiple attempts fail, contact after-sales support for assistance. Once the above steps are completed, the intelligent feeder's related functions can be used normally.

❸ For more remote interactions and visual functions on the APP side, first connect the device to the network, then experience it on the APP side.



Scan to download App



Scan to view tutorials

Product Use

Adding Pet Food

Open the top cover and add pet food to the food bucket. The device will automatically detect if the pet food in the bucket is sufficient. If not, the indicator light will be steady orange.

Replacing Desiccant

Open the desiccant box, remove the used desiccant pack, place a new desiccant pack into the box, close the lid, and put the top cover back in place. It is recommended to replace the desiccant pack every 1-3 months.

Manual Feeding

Quickly press the device button twice to dispense two portions of food.

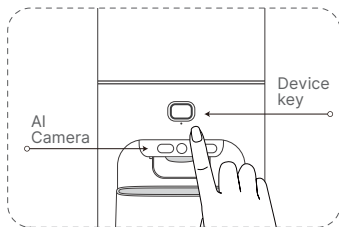
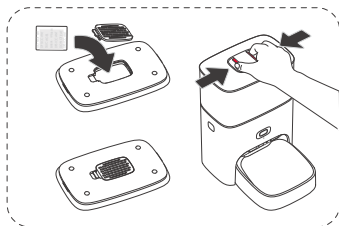
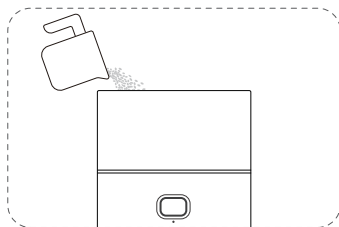
AI Camera

① **Visible Food Bowl:** With a 160° ultra-wide-angle view, it monitors the food bowl in real-time for food dispensing, intake, and food quantity.

② **Live Streaming:** Supports real-time video streaming. Watch your pet's live feed anytime through the mobile app, with options for recording, taking screenshots, adding food, and voice intercom.

③ **Night Vision:** Records your pet's activities clearly even in nighttime environments.

④ **Playback:** Replay your pet's activity tracks to understand their behavior when you're not at home.



5 Maintenance and Care

For the health of your pets, it is recommended to regularly clean the feeder storage barrel components and food bowl.

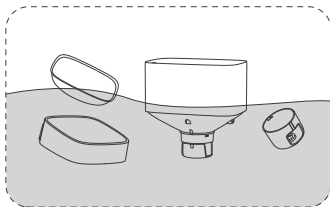
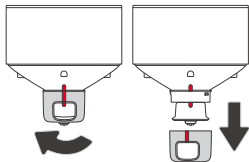
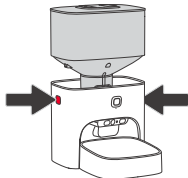
Food Bucket Cleaning

- 1 Remove the food bucket by pressing the buttons on both sides of the main unit and lifting it out.
- 2 Remove the turntable cover as shown in the diagram, wipe or wash it, and ensure thorough cleaning.
- 3 After ensuring all parts are completely dry, reassemble the main unit and continue use.

Food Bowl Cleaning

It is recommended to clean the food bowl every three days. Remove the food bowl and wipe or rinse it. Ensure it is completely dry before reassembling and using it.

Note: Do not wash the main unit with water; only use a damp cloth for wiping. Only the stainless steel bowl can be cleaned in the dishwasher.



Camera Care

To maintain camera clarity and stability, regularly care for and clean it (use a clean, soft cloth or paper towel to gently wipe the camera lens surface, removing dust, dirt, and fingerprints. Avoid using chemical cleaners or alcohol-based solutions to prevent damage to the lens surface).

6 Troubleshooting

If you encounter the following issues during product use, refer to the solutions below.

No.	Issue	Possible Cause	Solution
1	Red light steady, APP prompts E1	Food jam/device malfunction	Check the food outlet or food turntable for blockages. If present, clear and try again. If the issue persists, contact customer service.
2	Red light steady, APP prompts E2	Micro switch malfunction	Contact customer service.
3	Red light steady, APP prompts E3	Motor malfunction	Contact customer service.
4	Red light steady, APP prompts E4	Sensor malfunction	Contact customer service.
5	Red light steady, APP prompts E5	Serial port malfunction	Contact customer service.
6	Network failure	Operation error/device malfunction	Contact customer service.

7 Product Specifications

Product Name: Smart Pet Feeder [Cubie M3 Pro]

Product Model: NDSFD005

Main Materials: ABS, PP, SUS304

Product Size: 294*234*342mm

N.W.: ≈2.1kg

Connect Method: Wi-Fi(2.4GHz)

Input: 5V $\overline{\text{---}}$ 1A

9 Warranty Terms

Dear customers, thank you for purchasing this product, please read the below warranty terms carefully before using:

12-month Warranty & Lifetime Customer Support

Only apply to eligible purchases made directly from the Pet Marvel authorized distributors. Warranty coverage applies to the original owner and the original product only. And is not transferable.

The following conditions are not covered by the warranty:

- Any malfunction or defect caused by improper use of environment or conditions;
- Any fault or defect caused by improper installation, misuse, unauthorized maintenance, force majeure events, or other external reasons;
- Any fault or defect caused by the use of non-original fittings or accessories;
- The product has exceeded the warranty period;
- Other failures or damages caused by none of the product design, technology, manufacturing process, or quality problems;
- Normal fading, wear and tear, or consumption during the use of the product;
- Not able to provide a valid purchase certificate.

**For warranty service and more information, please get in touch via
Email: customerservice@petmarvel.com**



Note: Pictures on this brochure are for reference only, and the product is subject to the real object.

4

3

2

1

D

C

B

A

版本号

发布日期

变更内容

执行者

V1.0

2024-07-12

新版发行

宋雪丽

V1.1

2024-08-22

增加FCC警示

张明

logo文字颜色:90k

标题颜色:90k

产品线框:90k

正文颜色:80k

物料代码

XXXXXXX

物料名称

小方M3 Pro-智能锁鲜喂食器-英文

产品型号

ND5FD005

上海鸟语花香宠物有限公司

设计

张明

日期

2024-08-22

审核

XXX

日期

XXXX-XX-XX

批准

XXX

日期

XXXX-XX-XX

尺寸

110*110mm(16页)

公差

±1mm

印刷颜色

CMYK+PT185C

材质

108g哑粉纸

表面工艺

N/A

4

3

2

1