



# EMC TEST REPORT

Product Name: 4G Tablet

Model Name: OB-P08, TANK Pad E

FCC ID: 2BAVY-OBP08

Issued For : Shenzhen OBLUE Communication Technology Co.,Ltd.  
Room 702, Hepingdayou industrial and trade industrial park,  
No. 41, Yonghe Road, Heping Community, Fuhai Street,  
Baoan District, Shenzhen City,China

Issued By : Shenzhen LGT Test Service Co., Ltd.  
Room 205, Building 13, Zone B, Zhenxiong Industrial Park,  
No.177, Renmin West Road, Jinsha, Kengzi Street, Pingshan  
District, Shenzhen, Guangdong, China

Report Number: LGT25A017EM03

Sample Received Date: Jan. 03, 2025

Date of Test: Jan. 03, 2025 – Jan. 22, 2025

Date of Issue: Jan. 22, 2025

The test report is effective only with both signature and specialized stamp. This report shall not be reproduced except in full without the written approval of the Laboratory. The results in this report only apply to the tested sample.



## TEST REPORT CERTIFICATION

**Applicant:** Shenzhen OBLUE Communication Technology Co.,Ltd.  
Room 702, Hepingdayou industrial and trade industrial park, No. 41,  
**Address:** Yonghe Road, Heping Community, Fuhai Street, Baoan District,  
Shenzhen City,China

**Manufacturer:** Shenzhen OBLUE Communication Technology Co.,Ltd.  
Room 702, Hepingdayou industrial and trade industrial park, No. 41,  
**Address:** Yonghe Road, Heping Community, Fuhai Street, Baoan District,  
Shenzhen City,China

**Product Name:** 4G Tablet

**Trademark:** 8849, Unihertz, iHunt

**Model Name:** OB-P08, TANK Pad E

**Sample Status:** Normal

APPLICABLE STANDARDS	
STANDARD	TEST RESULTS
FCC 47 CFR Part 15 Subpart B ANSI C63.4-2014	PASS

Prepared by:

*Terry Zhao*

Terry Zhao  
Engineer

Approved by:

*Vita Li*

Vita Li  
Technical Director





## Table of Contents

<b>1. TEST SUMMARY</b>	<b>5</b>
1.1 TEST LABORATORY	6
1.2 MEASUREMENT UNCERTAINTY	6
<b>2. GENERAL INFORMATION</b>	<b>7</b>
2.1 GENERAL DESCRIPTION OF THE EUT	7
2.2 DESCRIPTION OF THE TEST MODES	8
2.3 DESCRIPTION OF THE SUPPORT UNITS	8
2.4 MEASUREMENT INSTRUMENTS LIST	9
<b>3. EMC EMISSION TEST</b>	<b>10</b>
3.1 CONDUCTED EMISSION MEASUREMENT	10
3.2 RADIATED EMISSION MEASUREMENT	14
<b>APPENDIX I - TEST SETUP</b>	<b>19</b>
<b>APPENDIX II - PHOTOGRAPHS OF EUT CONSTRUCTIONAL DETAILS</b>	<b>21</b>



### **Revision History**

Rev.	Issue Date	Revisions
00	Jan. 22, 2025	Initial Issue



## 1. TEST SUMMARY

EMC Emission				
Standard	Test Item	Limit	Judgement	Remark
FCC 47 CFR Part 15 Subpart B ANSI C63.4-2014	Conducted Emissions	Class B	PASS	
	Radiated Emissions Below 1GHz	Class B	PASS	
	Radiated Emissions Above 1GHz	Class B	PASS	Note 2

Note:

- 1 "N/A" denotes test is not applicable in this Test Report
- 2 If the highest frequency of the internal sources of the EUT is less than 108 MHz, the measurement shall only be made up to 1 GHz. If the highest frequency of the internal sources of the EUT is between 108 MHz and 500 MHz, the measurement shall only be made up to 2 GHz. If the highest frequency of the internal sources of the EUT is between 500 MHz and 1 GHz, measurement shall only be made up to 5 GHz. If the highest frequency of the internal sources of the EUT is above 1 GHz, the measurement shall be made up to 5 times the highest frequency or 40 GHz, whichever is less.



## 1.1 TEST LABORATORY

Company Name:	Shenzhen LGT Test Service Co., Ltd.
Address:	Room 205, Building 13, Zone B, Zhenxiong Industrial Park, No.177, Renmin West Road, Jinsha, Kengzi Street, Pingshan District, Shenzhen, Guangdong, China
Accreditation Certificate	A2LA Certificate No.: 6727.01
	FCC Registration No.: 746540
	CAB ID: CN0136

## 1.2 MEASUREMENT UNCERTAINTY

Test Item	Measurement Frequency Range MHz	Uncertainty dB
Conducted Emissions at AC mains power port	0.009 ~ 30	2.80
Radiated Emissions	0.009 ~ 30	2.16
Radiated Emissions	30 ~ 1000	4.40
Radiated Emissions	1000 ~ 18000	5.49
Note: 1. This uncertainty represents an expanded uncertainty expressed at approximately the 95% confidence level using a coverage factor of k=2. 2. The measurement uncertainty is not included in the test result.		



## 2. GENERAL INFORMATION

### 2.1 GENERAL DESCRIPTION OF THE EUT

Product Name:	4G Tablet
Trademark:	8849, Unihertz, iHunt
Model Name:	OB-P08
Series Model:	TANK Pad E
Model Difference:	Market model differences only.
Adapter:	Input: 100-240V, 50/60Hz, 1.5A Output: 5V, 3A 15W OR 9V, 3A 27W OR 12V, 3A 36W OR 15V, 3A 45W OR 20V, 3.25A 65W OR 11V, 6A 66W MAX
Battery:	Capacity: 10550mAh Rated Voltage: 7.82V
Test Voltage:	AC 120V/60Hz Battery: 7.82V
Hardware Version:	G92_V1.2
Software Version:	OB-P08_20250102
Connecting I/O Port(s):	Please refer to the Note 1.

*Note: For a more detailed features description, please refer to the manufacturer's specifications or the User's Manual.*



## 2.2 DESCRIPTION OF THE TEST MODES

To investigate the maximum EMI emission characteristics generated from EUT, the test system was pre-scanning tested based on the consideration of following EUT operation mode or test configuration mode which possibly have effect on EMI emission level. Each of these EUT operating mode(s) or test configuration mode(s) mentioned above was evaluated respectively.

Test Mode	Description
Mode 1	Charging+GSM link+BT+Wi-Fi+GPS+NFC+Camera recording+Earphone
Mode 2	Charging+WCDMA link+BT+Wi-Fi+GPS+NFC+Camera recording+Earphone
Mode 3	Charging+LTE link+BT+Wi-Fi+GPS+NFC+Camera recording+Earphone
Mode 4	USB Data Transmission

Note: Only the data of worst-case was recorded in this report.

## 2.3 DESCRIPTION OF THE SUPPORT UNITS

The EUT has been tested as an independent unit together with other necessary accessories or support units. The following support units or accessories were used to form a representative test configuration during the tests.

### Accessories Equipment

Description	Manufacturer	Model	S/N	Rating
Adapter	Shenzhen Huajin Electronics Co.,Ltd	HJ-PD66W-US	N/A	Input: 100-240V, 50/60Hz, 1.5A Output: 5V, 3A 15W OR 9V, 3A 27W OR 12V, 3A 36W OR 15V, 3A 45W OR 20V, 3.25A 65W OR 11V, 6A 66W MAX
USB-C to USB-C Cable	N/A	N/A	N/A	1m

### Auxiliary Equipment

Description	Manufacturer	Model	S/N	Rating
Laptop	Lenovo	HKF-16	N/A	N/A
Earphone	VESAFE	39630078	N/A	N/A

Note:

- (1) For detachable type I/O cable should be specified the length in cm in 『Length』 column.





## 2.4 MEASUREMENT INSTRUMENTS LIST

Conducted Emission					
Equipment	Manufacturer	Model No.	Serial No.	Cal. Date	Cal. Until
EMI Test Receiver	R&S	ESU8	100372	2024.03.09	2025.03.08
LISN	COM-POWER	LI-115	02032	2024.03.09	2025.03.08
LISN	SCHWARZBECK	NNLK 8122	00160	2024.03.09	2025.03.08
Transient Limiter	CYBERTEK	EM5010A	E2250100049	2024.03.09	2025.03.08
Temperature & Humidity	KTJ	TA218B	N.A	2024.03.09	2025.03.08
Testing Software	EMC-I_V1.4.0.3_SKET				
Radiated Emission					
Equipment	Manufacturer	Model No.	Serial No.	Cal. Date	Cal. Until
EMI Test Receiver	R&S	ESU8	100372	2024.03.09	2025.03.08
Spectrum Analyzer	Keysight	N9020A	MY50530994	2024.03.09	2025.03.08
Spectrum Analyzer	Keysight	N9010B	MY60242508	2024.08.05	2025.08.04
Active loop Antenna	ETS	6502	00049544	2023.10.13	2025.10.12
Bilog Antenna	SCHWARZBECK	VULB 9168	01447	2022.12.12	2025.12.11
Horn Antenna	SCHWARZBECK	3115	10SL0060	2022.06.02	2025.06.01
Pre-amplifier (9kHz-1GHz)	EMtrace	RP01A	02017	2024.03.09	2025.03.08
Pre-amplifier (1-26.5G)	Agilent	8449B	3008A4722	2024.03.09	2025.03.08
Antenna Tower	SAEMC	BK-4AT-BS-D	SK2021093008	N.A	N.A
Temperature & Humidity	JINGCHUANG	BT-3	N.A	2024.03.11	2025.03.10
Testing Software	EMC-I_V1.4.0.3_SKET				



### 3. EMC EMISSION TEST

#### 3.1 CONDUCTED EMISSION MEASUREMENT

##### 3.1.1 LIMITS

FREQUENCY (MHz)	Conducted Emission Limits (dBuV)			
	Class A		Class B	
	Quasi-peak	Average	Quasi-peak	Average
0.15 ~ 0.5	79.00	66.00	66 - 56 *	56 - 46 *
0.5 ~ 5	73.00	60.00	56.00	46.00
5 ~ 30	73.00	60.00	60.00	50.00

Note:

- (1) The tighter limit applies at the band edges.
- (2) The limit of " \* " marked band means the limitation decreases linearly with the logarithm of the frequency in the range.
- (3) The test result calculated as following:  
Measurement Value = Reading Level + Correct Factor  
Correct Factor = Insertion Loss + Cable Loss + Attenuator Factor  
Margin Level = Measurement Value - Limit Value

The following table is the setting of the receiver

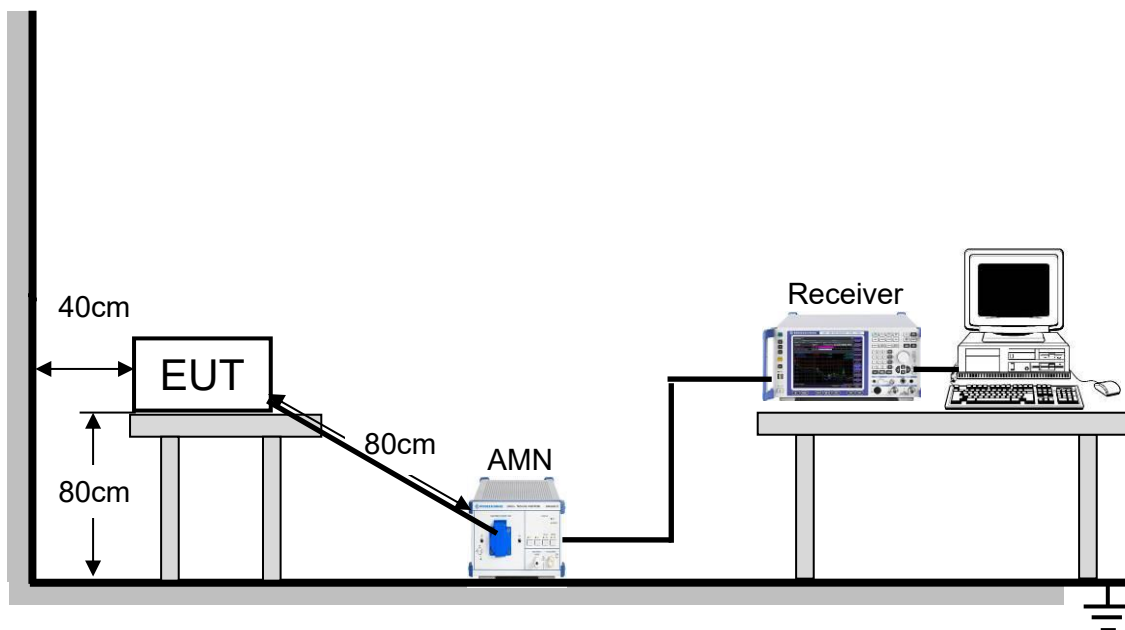
Receiver Parameters	Setting
Attenuation	10 dB
Start Frequency	0.15 MHz
Stop Frequency	30 MHz
IF Bandwidth	9 kHz

##### 3.1.2 TEST PROCEDURE

- a. The EUT was placed 0.4 meters from the conducting wall of the shielded room with EUT being connected to the power mains through a line impedance stabilization network (LISN). Other support units were connected to the power mains through another LISN. The two LISNs provide 50 Ohm/ 50uH of coupling impedance for the measuring instrument.
- b. Interconnecting cables that hang closer than 40 cm to the ground plane shall be folded back and forth in the center forming a bundle 30 to 40 cm long.
- c. I/O cables that are not connected to a peripheral shall be bundled in the center. The end of the cable may be terminated, if required, using the correct terminating impedance. The overall length shall not exceed 1 m.
- d. LISN at least 80 cm from nearest part of EUT chassis.
- e. For the actual test configuration, please refer to the related Item - EUT Test Photos.



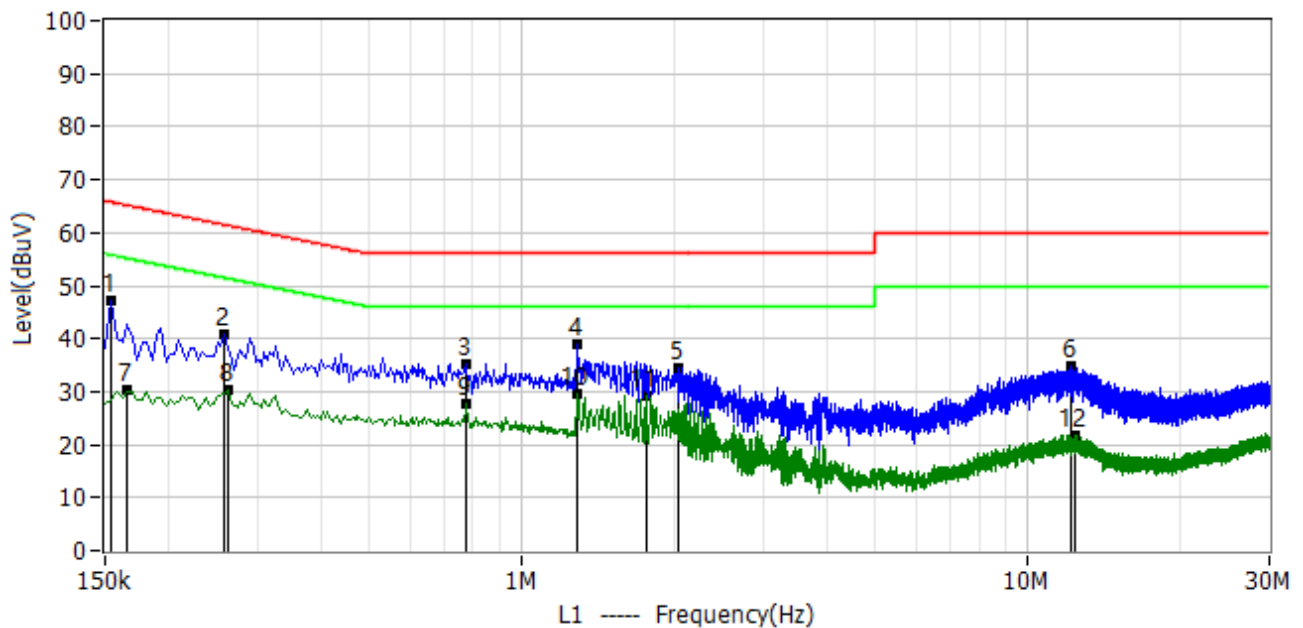
### 3.1.3 TEST SETUP





### 3.1.4 TEST RESULTS

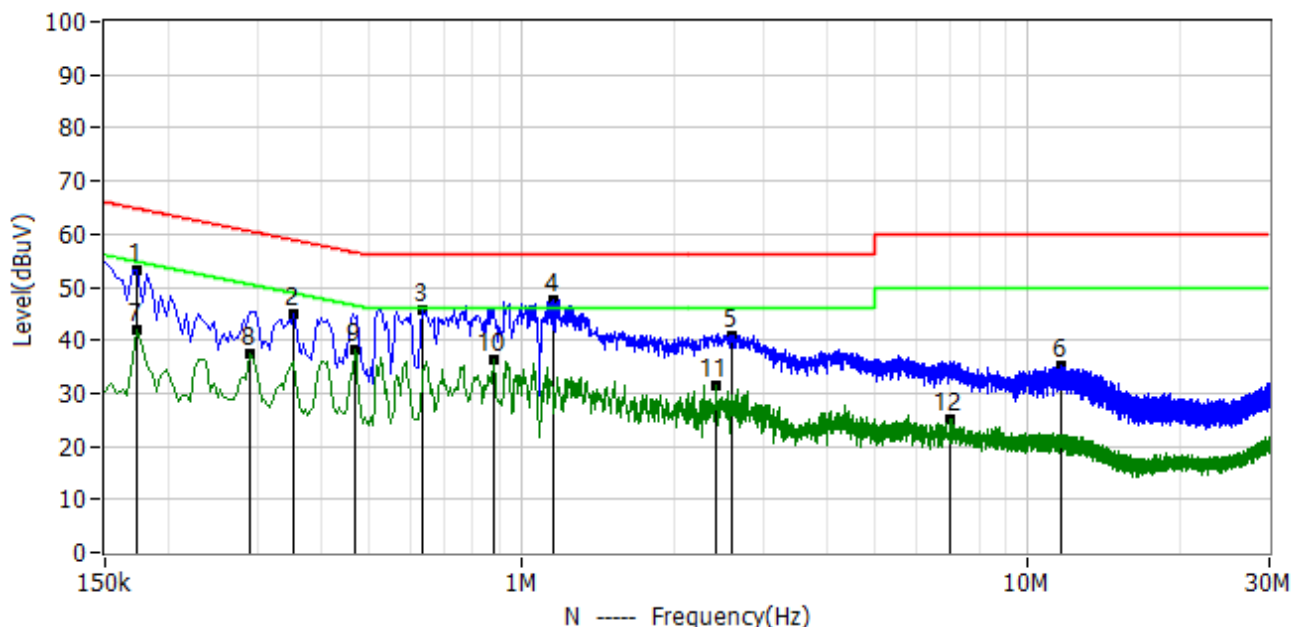
Project: LGT25A017	Test Engineer: LiuH
EUT: 4G Tablet	Temperature: 22.5°C
M/N: OB-P08	Humidity: 45%RH
Test Voltage: AC 120V/60Hz	Test Data: 2025-01-08
Test Mode: Charging+GSM link+BT+Wi-Fi+GPS+NFC+Camera recording+Earphone	
Note:	



No.	Frequency MHz	Reading dBuV	Factor dB	Level dBuV	Limit dBuV	Margin dB	Detector	Polar
1*	0.154	36.51	10.58	47.09	65.80	-18.70	QP	L1
2*	0.258	30.15	10.60	40.75	61.50	-20.70	QP	L1
3*	0.774	24.79	10.60	35.39	56.00	-20.60	QP	L1
4*	1.290	28.27	10.78	39.05	56.00	-17.00	QP	L1
5*	2.038	23.48	11.00	34.48	56.00	-21.50	QP	L1
6*	12.194	23.61	11.18	34.79	60.00	-25.20	QP	L1
7*	0.166	19.56	10.59	30.15	55.20	-25.00	AV	L1
8*	0.262	19.71	10.59	30.30	51.40	-21.10	AV	L1
9*	0.778	17.03	10.60	27.63	46.00	-18.40	AV	L1
10*	1.290	18.77	10.78	29.55	46.00	-16.40	AV	L1
11*	1.762	18.37	10.92	29.29	46.00	-16.70	AV	L1
12*	12.378	10.46	11.20	21.66	50.00	-28.30	AV	L1



Project: LGT25A017	Test Engineer: LiuH
EUT: 4G Tablet	Temperature: 22.5°C
M/N: OB-P08	Humidity: 45%RH
Test Voltage: AC 120V/60Hz	Test Data: 2025-01-08
Test Mode: Charging+GSM link+BT+Wi-Fi+GPS+NFC+Camera recording+Earphone	
Note:	



No.	Frequency MHz	Reading dBuV	Factor dB	Level dBuV	Limit dBuV	Margin dB	Detector	Polar
1*	0.174	42.78	10.56	53.34	64.80	-11.40	QP	N
2*	0.354	34.24	10.59	44.83	58.90	-14.00	QP	N
3*	0.634	35.05	10.56	45.61	56.00	-10.40	QP	N
4*	1.150	36.94	10.57	47.51	56.00	-8.50	QP	N
5*	2.606	30.18	10.77	40.95	56.00	-15.00	QP	N
6*	11.638	24.15	11.11	35.26	60.00	-24.70	QP	N
7*	0.174	31.27	10.56	41.83	54.80	-12.90	AV	N
8*	0.290	26.91	10.59	37.50	50.50	-13.00	AV	N
9*	0.466	27.55	10.56	38.11	46.60	-8.50	AV	N
10*	0.878	25.62	10.55	36.17	46.00	-9.80	AV	N
11*	2.422	20.74	10.77	31.51	46.00	-14.50	AV	N
12*	7.026	14.43	10.81	25.24	50.00	-24.80	AV	N



## 3.2 RADIATED EMISSION MEASUREMENT

### 3.2.1 LIMITS

#### Below 1 GHz

Frequency (MHz)	Class A	Class B
	Field strength (dBuV/m) (at 3m)	Field strength (dBuV/m) (at 3m)
30 - 88	49.5	40
88 - 216	53.9	43.5
216 - 960	56.9	46
Above 960	60	54

#### Above 1 GHz

Frequency (MHz)	Class A		Class B	
	Field strength (dBuV/m) (at 3m)		Field strength (dBuV/m) (at 3m)	
	Peak	Average	Peak	Average
Above 1000	80	60	74	54

#### Frequency Range of Radiated Disturbance Measurement

Highest frequency generated or Upper frequency of measurement used in the device or on which the device operates or tunes (MHz)	Range (MHz)
Below 1.705	30
1.705 - 108	1000
108 - 500	2000
500 - 1000	5000
Above 1000	5th harmonic of the highest frequency or 40 GHz, whichever is lower

Note:

- (1) The limit for radiated test was performed according to FCC Part 15, Subpart B;
- (2) The tighter limit applies at the band edges;
- (3) The test result calculated as following:  
 Measurement Value = Reading Level + Correct Factor,  
 Correct Factor = Antenna Factor + Cable Loss - Amplifier Gain(if use),  
 Margin Level = Measurement Value - Limit Value.

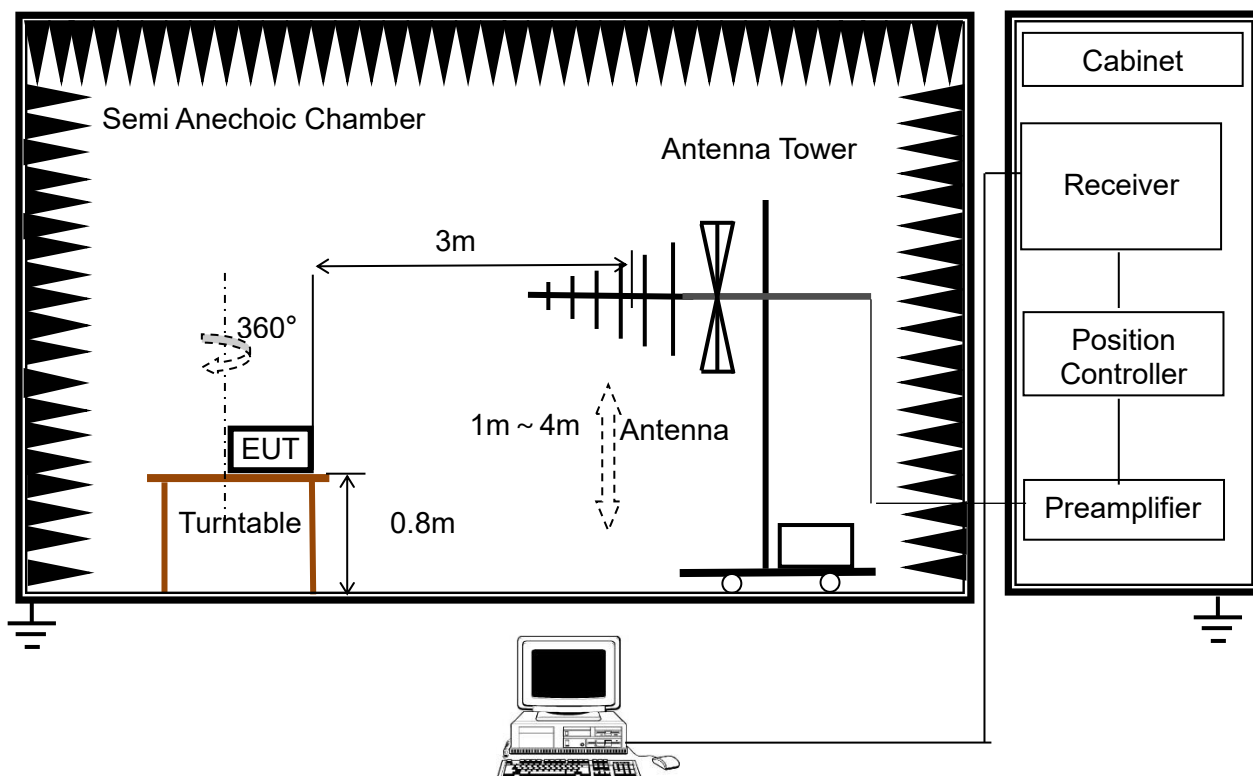
### 3.2.2 TEST PROCEDURE

- a. The EUT was placed on the top of a rotating table 0.8 meter above the ground at a 3 meter semi-anechoic chamber room. The table was rotated 360 degrees to determine the position of the highest radiation.
- b. EUT as the center to the edge of the auxiliary device, the distance from the maximum edge to the center of the antenna is 3 meter.
- c. The height of antenna is varied from 1 meter to 4 meter above the ground to determine the maximum value of the field strength. Both horizontal and vertical polarizations of the antenna are set to make the measurement.
- d. For each suspected emission, the EUT was arranged to its worst case and then the antenna was tuned to heights from 1 meter to 4 meter and the rotatable table was turned from 0 degrees to 360 degree to find the maximum reading.
- e. The test-receiver system was set to quasi-peak detect function and specified bandwidth with maximum hold mode when the test frequency is below 1GHz.
- f. For the actual test configuration, please refer to the related Item –EUT Test Photos.

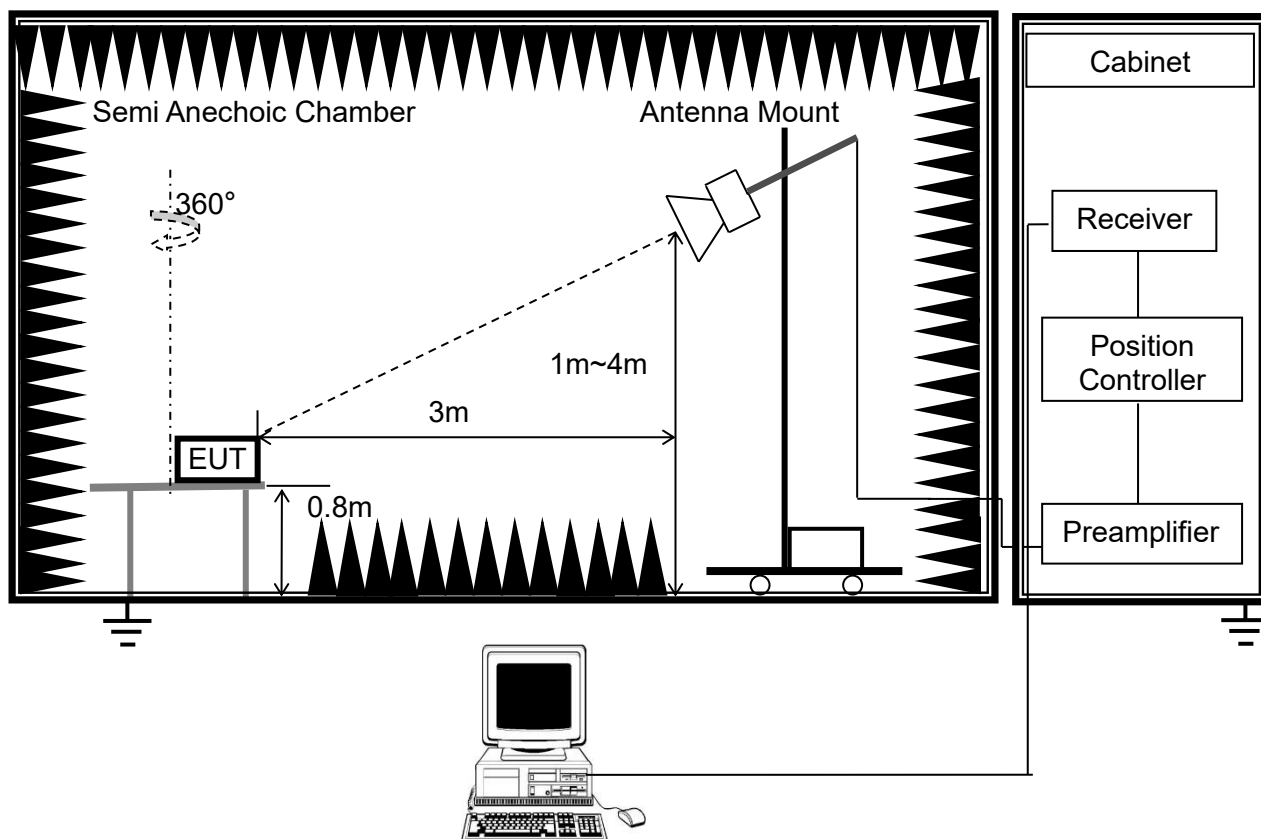


### 3.2.3 TEST SETUP

#### (A) Radiated Emission Test Set-Up Frequency Below 1 GHz



#### (B) Radiated Emission Test Set-Up Frequency Above 1GHz

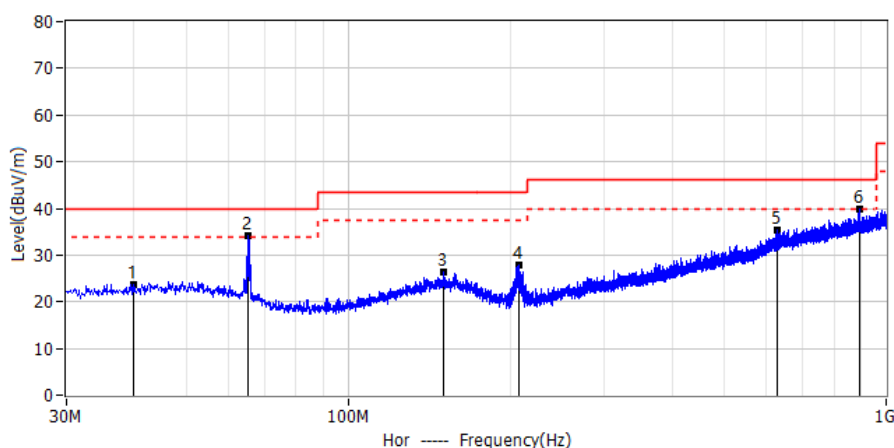




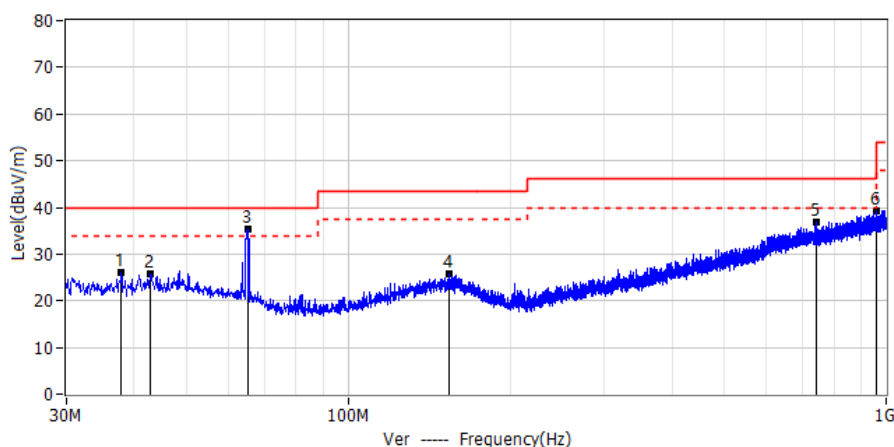
### 3.2.4 TEST RESULTS

#### BELOW 1GHZ

Project: LGT25A017	Test Engineer: LiuH
EUT: 4G Tablet	Temperature: 23.8°C
M/N: OB-P08	Humidity: 42.1%RH
Test Voltage: AC 120V/60Hz	Test Data: 2025-01-17
Test Mode: Charging+GSM link+BT+Wi-Fi+GPS+NFC+Camera recording+Earphone	
Note:	



No.	Frequency MHz	Reading dBuV	Factor dB/m	Level dBuV/m	Limit dBuV/m	Margin dB	Detector	Polar
1*	40.064	3.80	20.01	23.81	40.00	-16.19	QP	Hor
2*	65.405	15.63	18.54	34.17	40.00	-5.83	QP	Hor
3*	150.644	4.81	21.46	26.27	43.50	-17.23	QP	Hor
4*	207.268	10.55	17.46	28.01	43.50	-15.49	QP	Hor
5*	626.550	5.97	29.26	35.23	46.00	-10.77	QP	Hor
6*	893.785	6.66	33.10	39.76	46.00	-6.24	QP	Hor

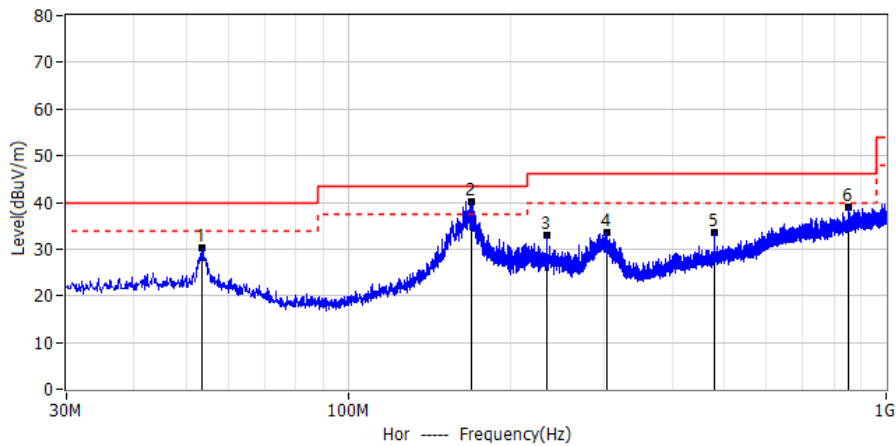


No.	Frequency MHz	Reading dBuV	Factor dB/m	Level dBuV/m	Limit dBuV/m	Margin dB	Detector	Polar
1*	37.881	6.37	19.77	26.14	40.00	-13.86	QP	Ver
2*	42.853	5.06	20.76	25.82	40.00	-14.18	QP	Ver
3*	65.405	16.78	18.54	35.32	40.00	-4.68	QP	Ver
4*	154.039	4.09	21.60	25.69	43.50	-17.81	QP	Ver
5*	740.040	6.03	30.89	36.92	46.00	-9.08	QP	Ver
6*	959.988	5.88	33.39	39.27	46.00	-6.73	QP	Ver

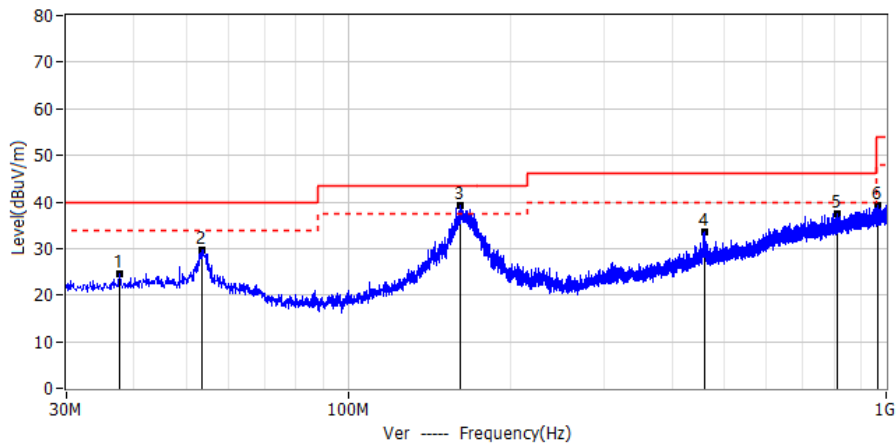




Project: LGT25A017	Test Engineer: LiuH
EUT: 4G Tablet	Temperature: 23.8°C
M/N: OB-P08	Humidity: 42.1%RH
Test Voltage: Battery	Test Data: 2025-01-17
Test Mode: USB Data Transmission	
Note:	



No.	Frequency MHz	Reading dBuV	Factor dB/m	Level dBuV/m	Limit dBuV/m	Margin dB	Detector	Polar
1*	53.523	9.68	20.48	30.16	40.00	-9.84	QP	Hor
2*	170.044	19.48	20.77	40.25	43.50	-3.25	QP	Hor
3*	233.821	14.34	18.65	32.99	46.00	-13.01	QP	Hor
4*	303.055	12.04	21.48	33.52	46.00	-12.48	QP	Hor
5*	479.959	6.95	26.59	33.54	46.00	-12.46	QP	Hor
6*	852.681	6.50	32.53	39.03	46.00	-6.97	QP	Hor

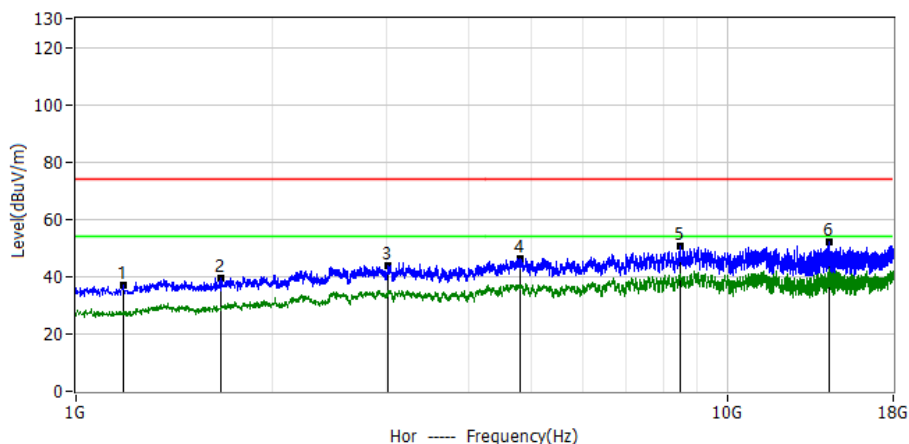


No.	Frequency MHz	Reading dBuV	Factor dB/m	Level dBuV/m	Limit dBuV/m	Margin dB	Detector	Polar
1*	37.639	4.74	19.80	24.54	40.00	-15.46	QP	Ver
2*	53.644	9.17	20.43	29.60	40.00	-10.40	QP	Ver
3*	161.556	17.83	21.29	39.12	43.50	-4.38	QP	Ver
4*	460.680	7.66	25.76	33.42	46.00	-12.58	QP	Ver
5*	813.275	5.38	32.11	37.49	46.00	-8.51	QP	Ver
6*	963.868	5.81	33.56	39.37	54.00	-14.63	QP	Ver

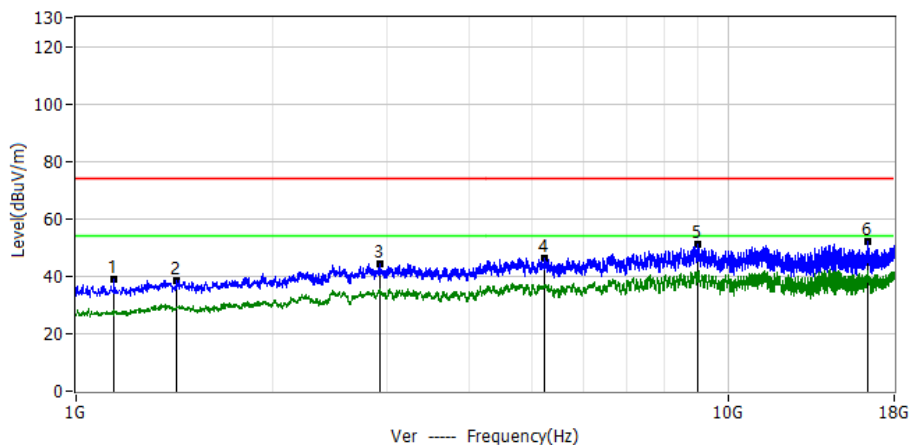


## ABOVE 1GHZ

Project: LGT25A017	Test Engineer: LiuH
EUT: 4G Tablet	Temperature: 23.8°C
M/N: OB-P08	Humidity: 42.1%RH
Test Voltage: AC 120V/60Hz	Test Data: 2025-01-17
Test Mode: Charging+GSM link+BT+Wi-Fi+GPS+NFC+Camera recording+Earphone	
Note:	



No.	Frequency MHz	Reading dBuV	Factor dB/m	Level dBuV/m	Limit dBuV/m	Margin dB	Detector	Polar
1*	1184.9000	60.14	-23.14	37.00	74.00	-37.00	PK	Hor
2*	1671.5000	59.31	-19.63	39.68	74.00	-34.32	PK	Hor
3*	3016.6000	52.61	-8.78	43.83	74.00	-30.17	PK	Hor
4*	4820.7000	53.29	-6.82	46.47	74.00	-27.53	PK	Hor
5*	8477.9000	55.17	-4.63	50.54	74.00	-23.46	PK	Hor
6*	14362.0000	51.53	0.72	52.25	74.00	-21.75	PK	Hor

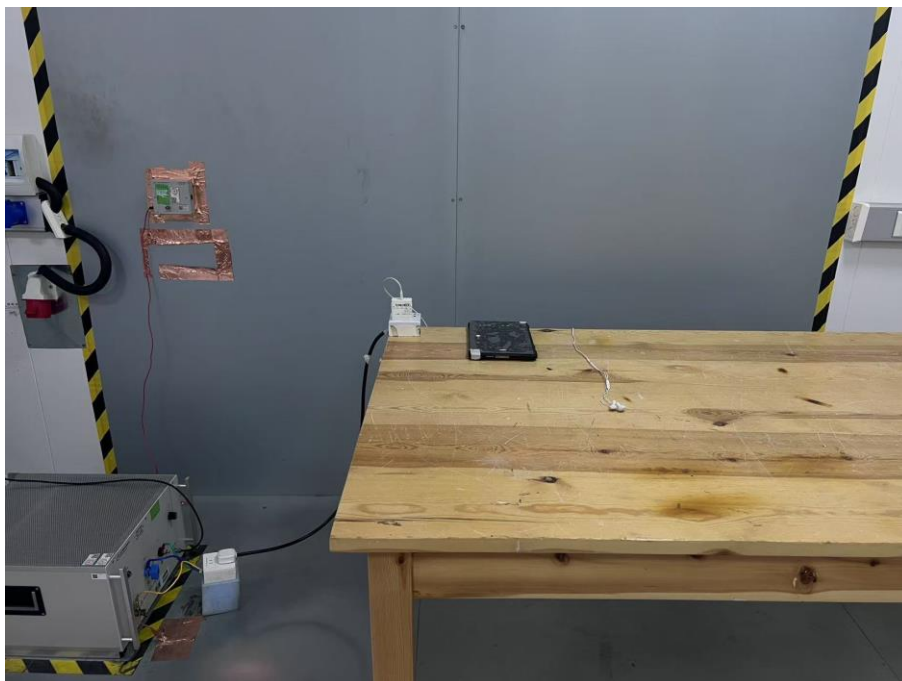


No.	Frequency MHz	Reading dBuV	Factor dB/m	Level dBuV/m	Limit dBuV/m	Margin dB	Detector	Polar
1*	1142.4000	62.26	-23.51	38.75	74.00	-35.25	PK	Ver
2*	1427.1000	60.02	-21.33	38.69	74.00	-35.31	PK	Ver
3*	2918.9000	53.47	-9.18	44.29	74.00	-29.71	PK	Ver
4*	5233.0000	54.26	-7.79	46.47	74.00	-27.53	PK	Ver
5*	8985.7000	54.78	-3.70	51.08	74.00	-22.92	PK	Ver
6*	16380.7000	51.10	0.76	51.86	74.00	-22.14	PK	Ver

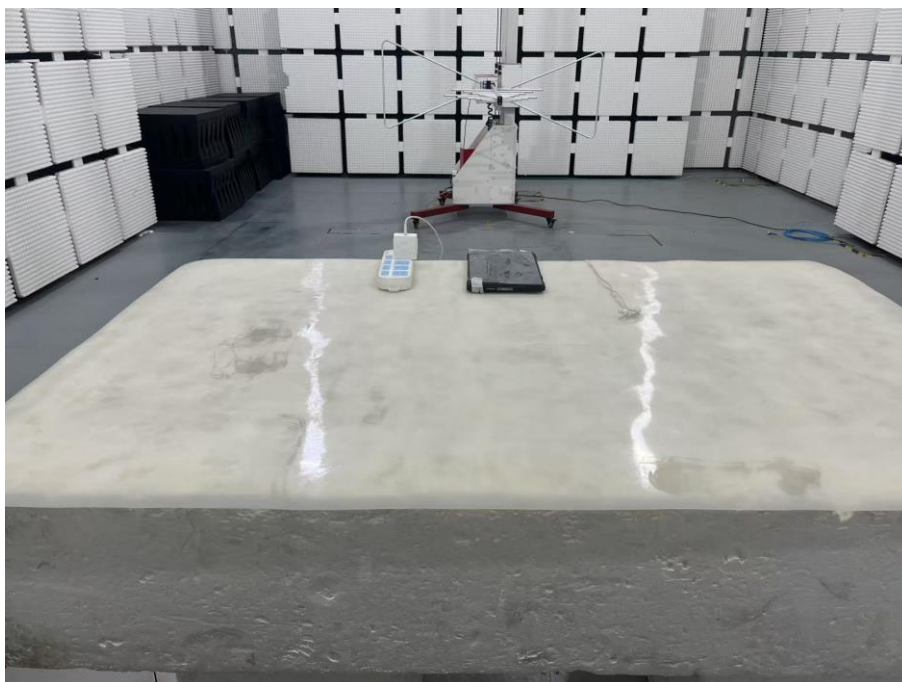


## APPENDIX I - TEST SETUP

### Set-up for Conducted Emission on AC Mains (CE)

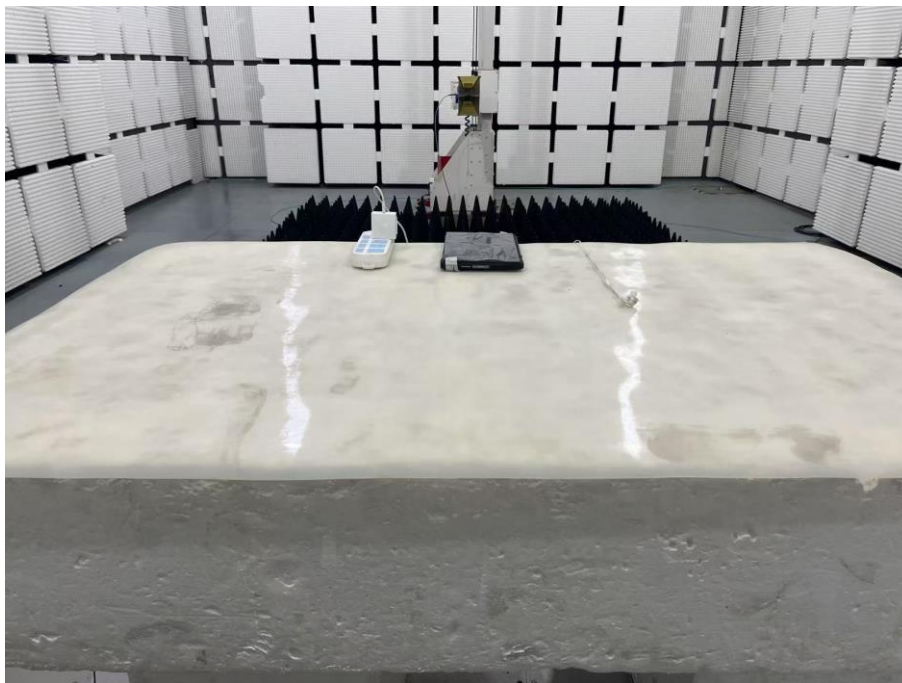


### Set-up for Radiated Emission (RE), Below 1GHz





### Set-up for Radiated Emission (RE), Above 1GHz





## APPENDIX II - PHOTOGRAPHS OF EUT CONSTRUCTIONAL DETAILS

Photo 1



Photo 2

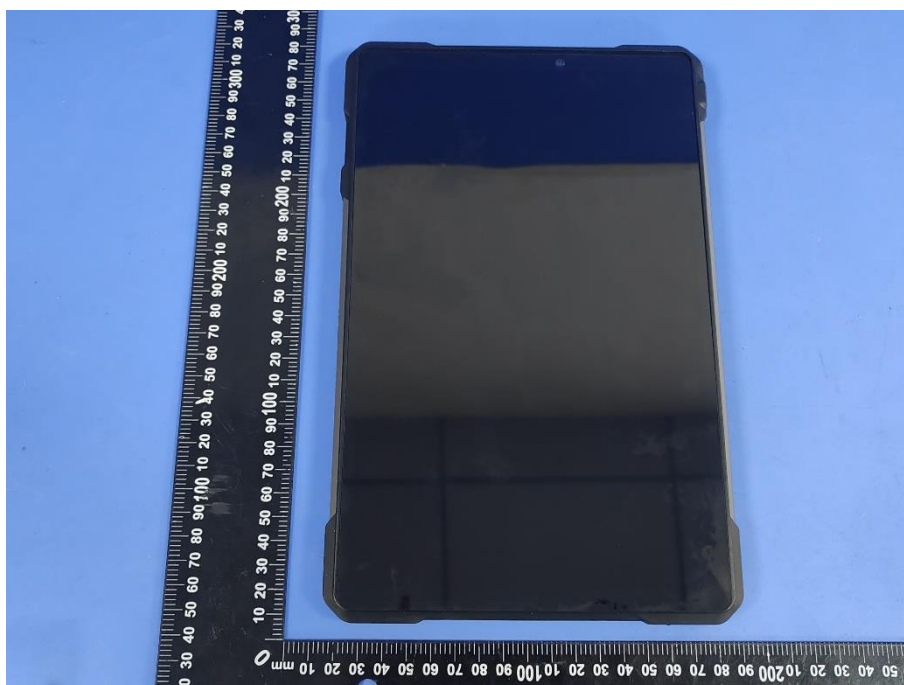




Photo 3



Photo 4



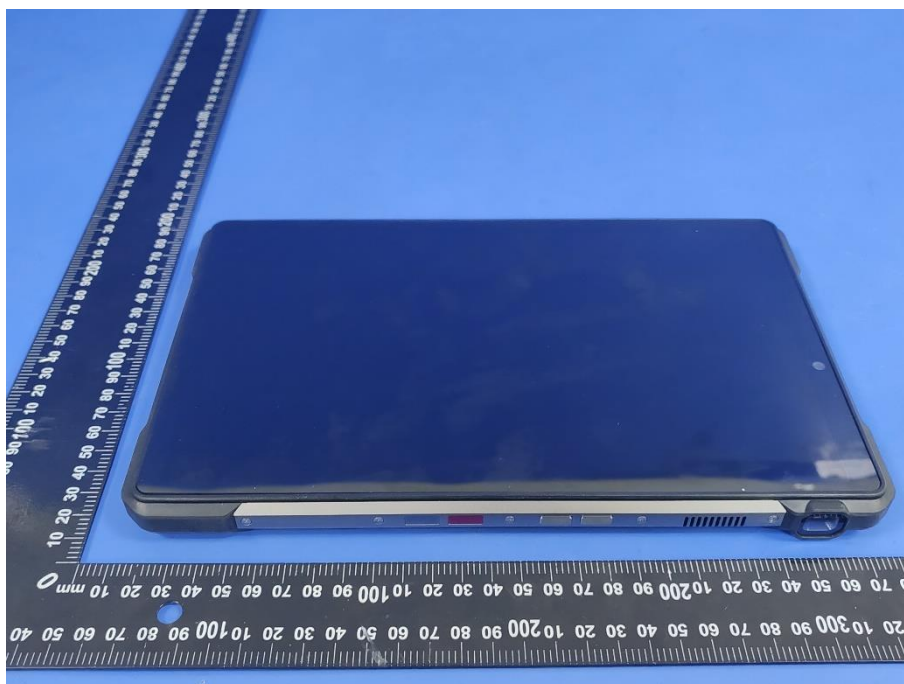




Photo 5

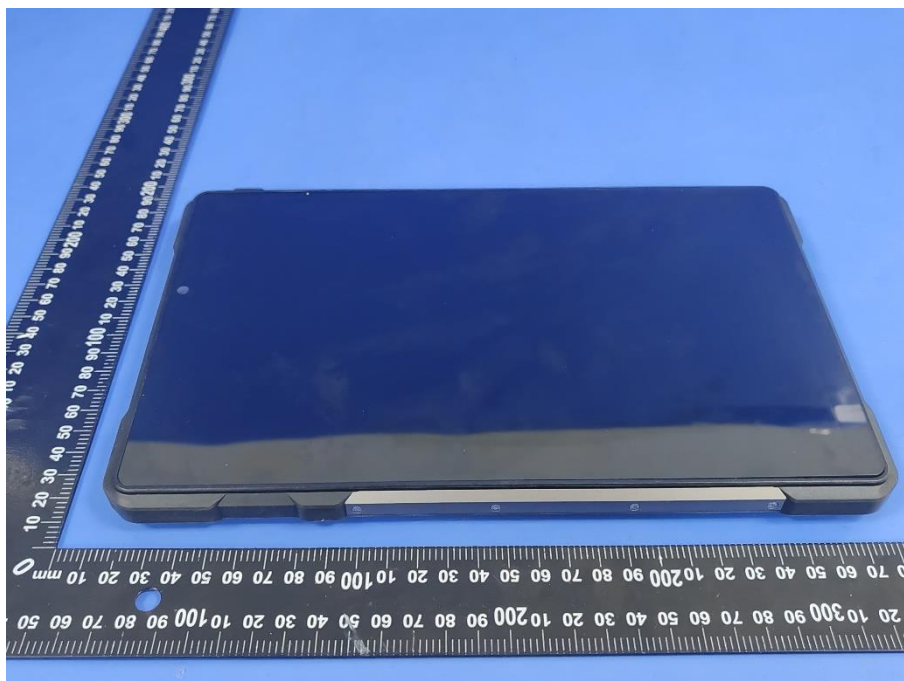


Photo 6





**Photo 7**



**Photo 8**







Photo 9

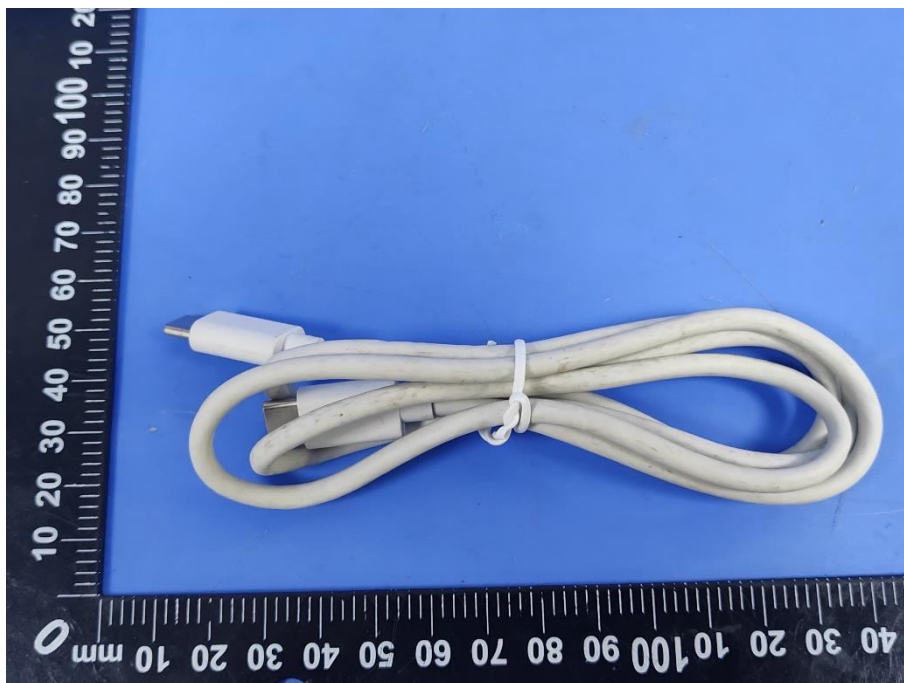
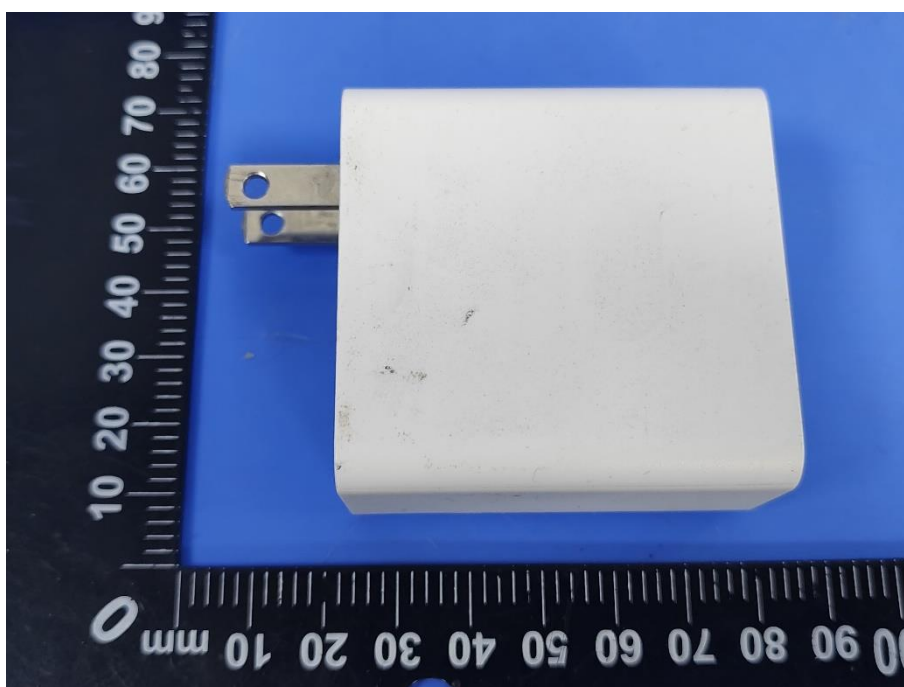
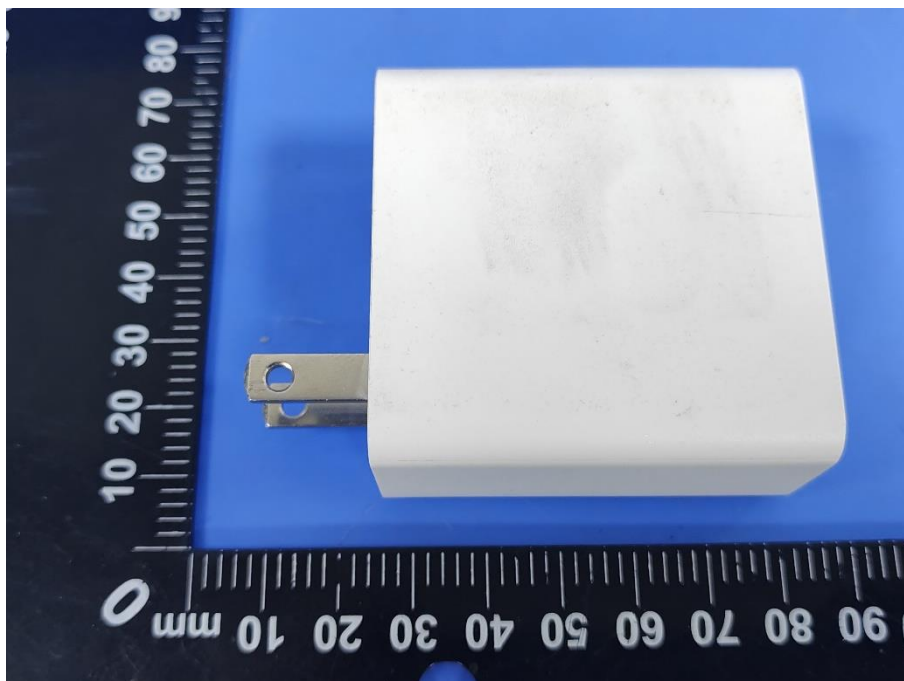


Photo 10





**Photo 11**



**Photo 12**

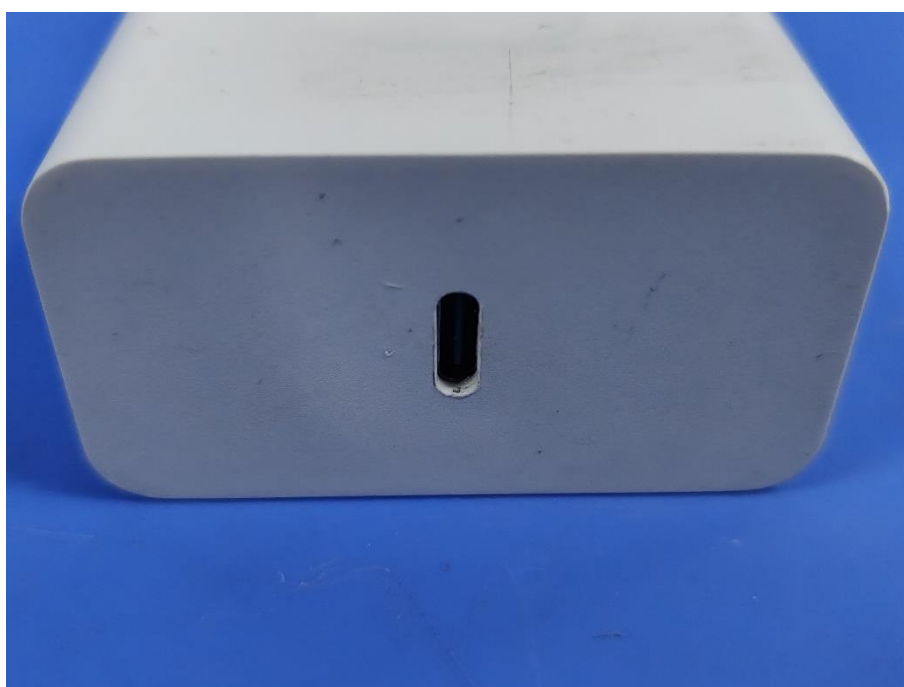




Photo 13



Photo 14

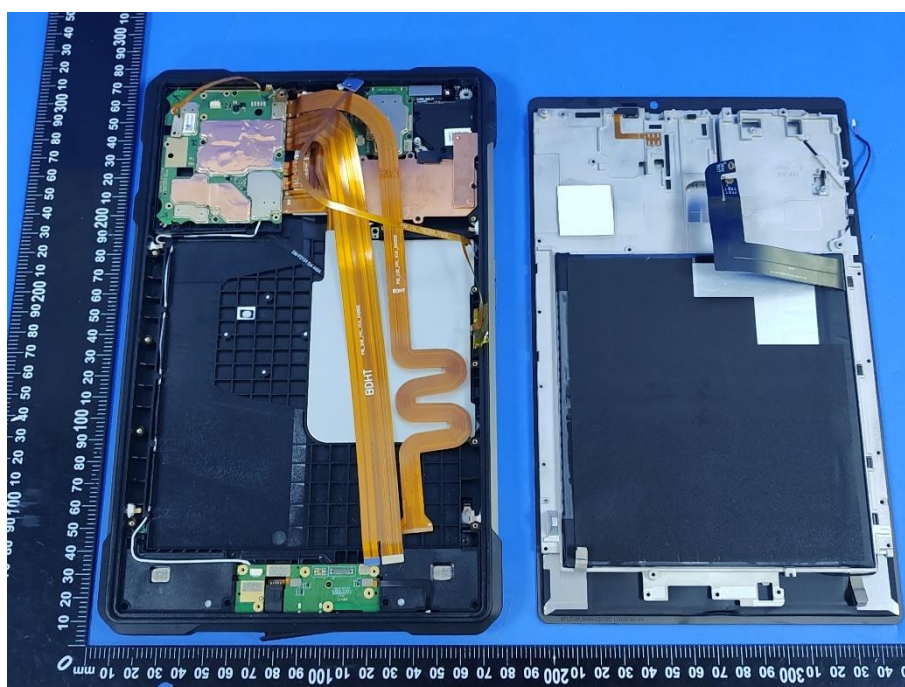




Photo 15

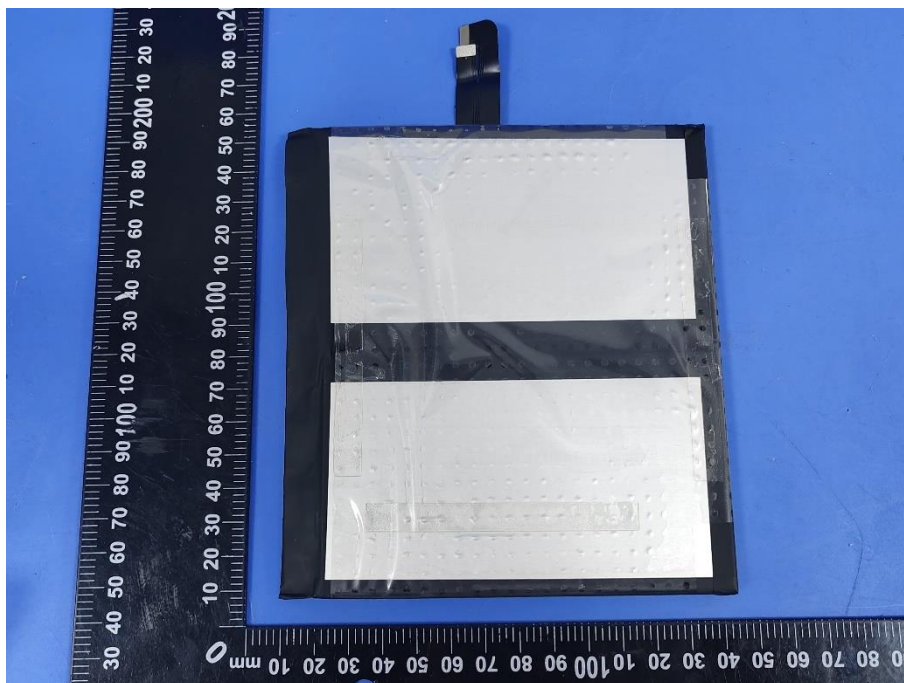


Photo 16







Photo 17



Photo 18





Photo 19

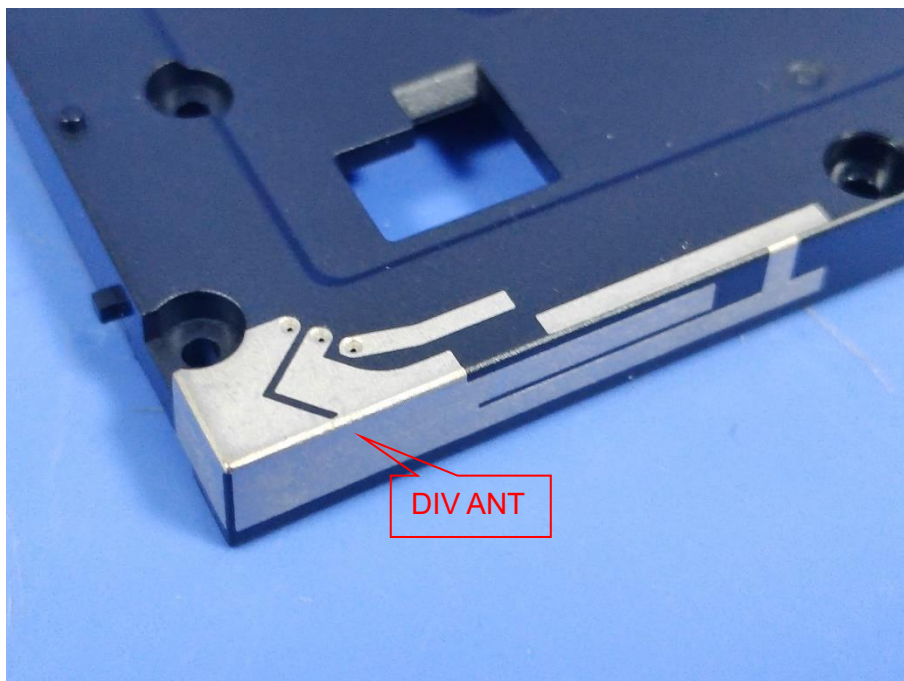


Photo 20





Photo 21

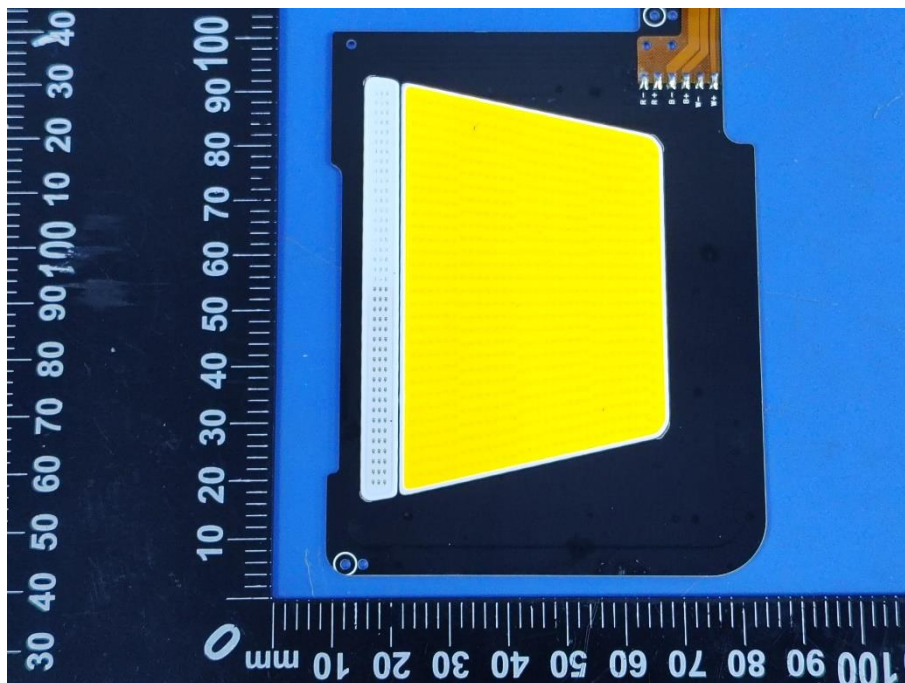


Photo 22







Photo 23

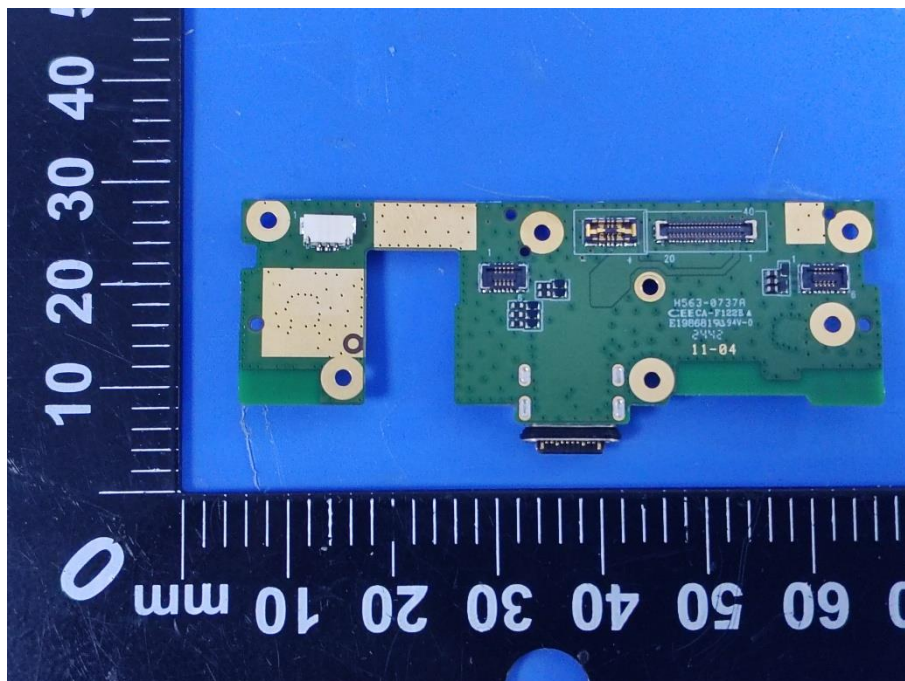


Photo 24

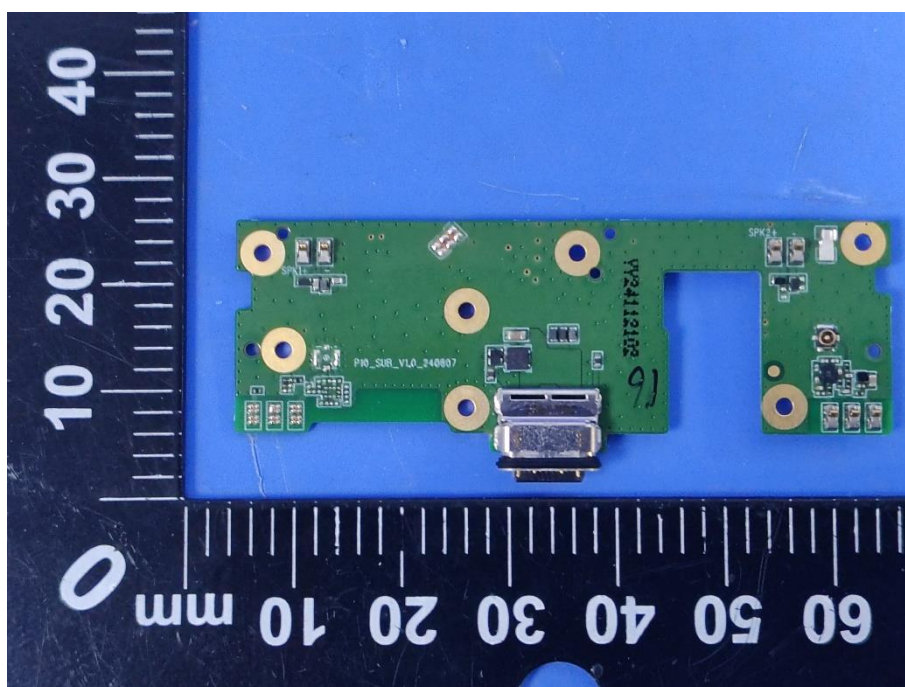






Photo 25

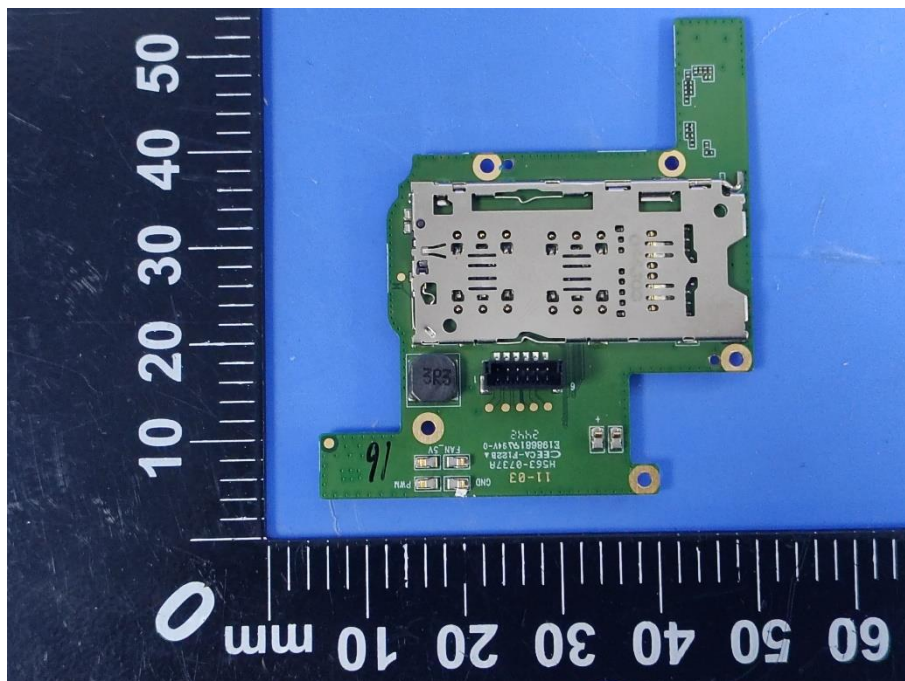


Photo 26

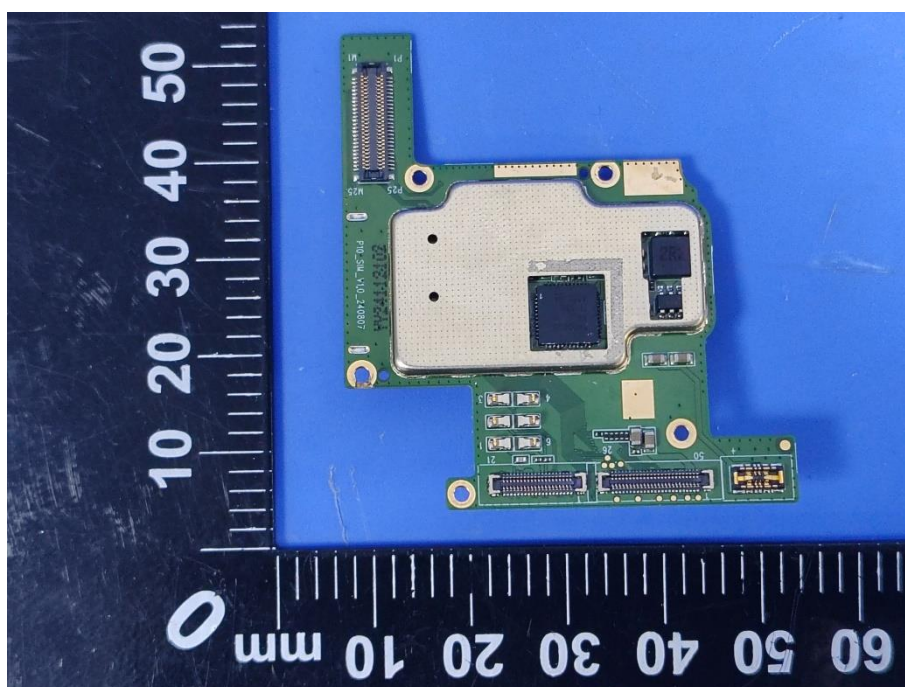




Photo 27

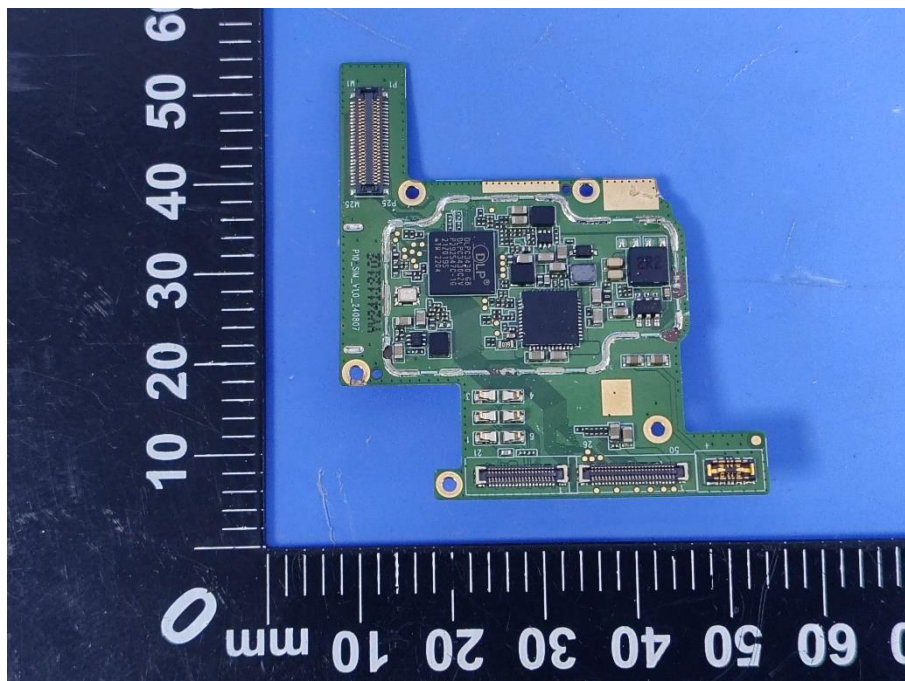


Photo 28

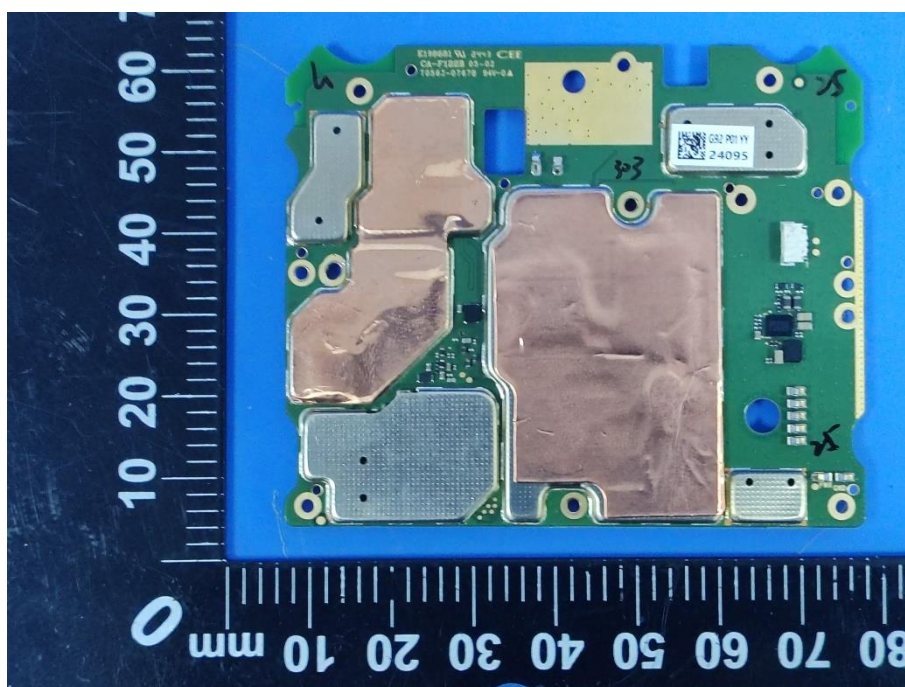






Photo 29

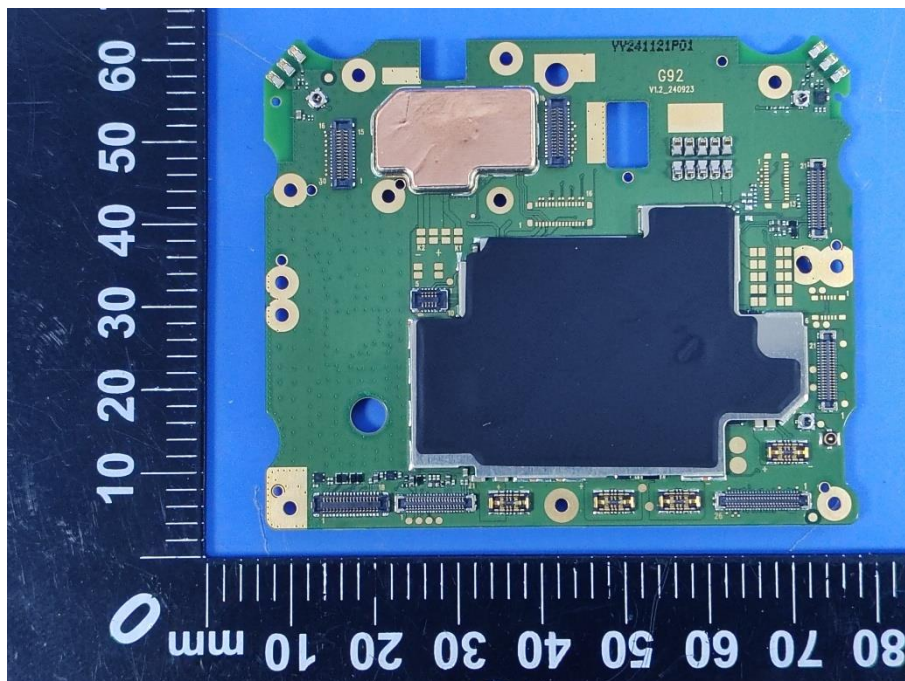


Photo 30

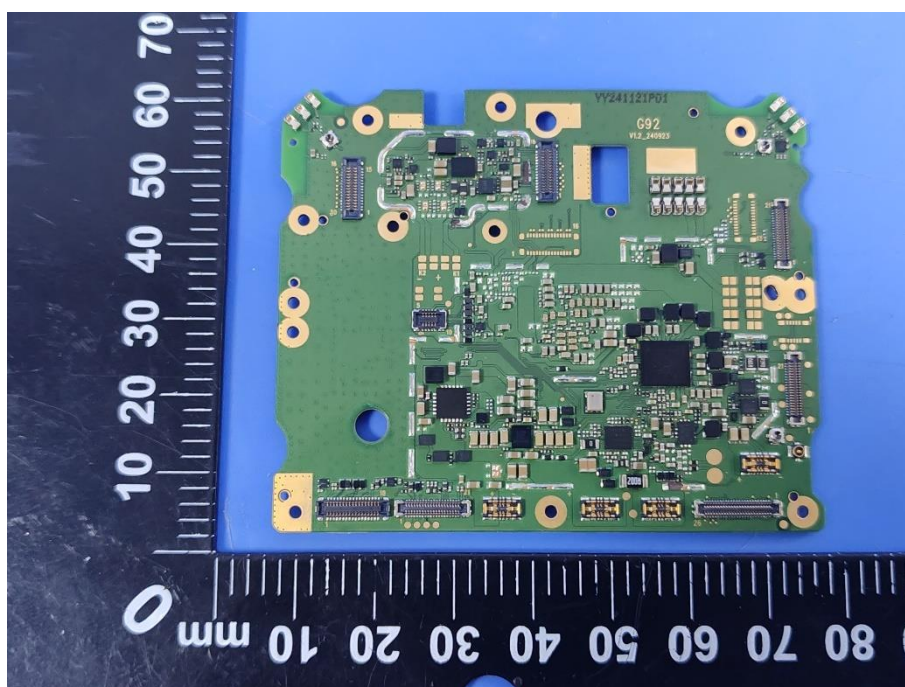




Photo 31

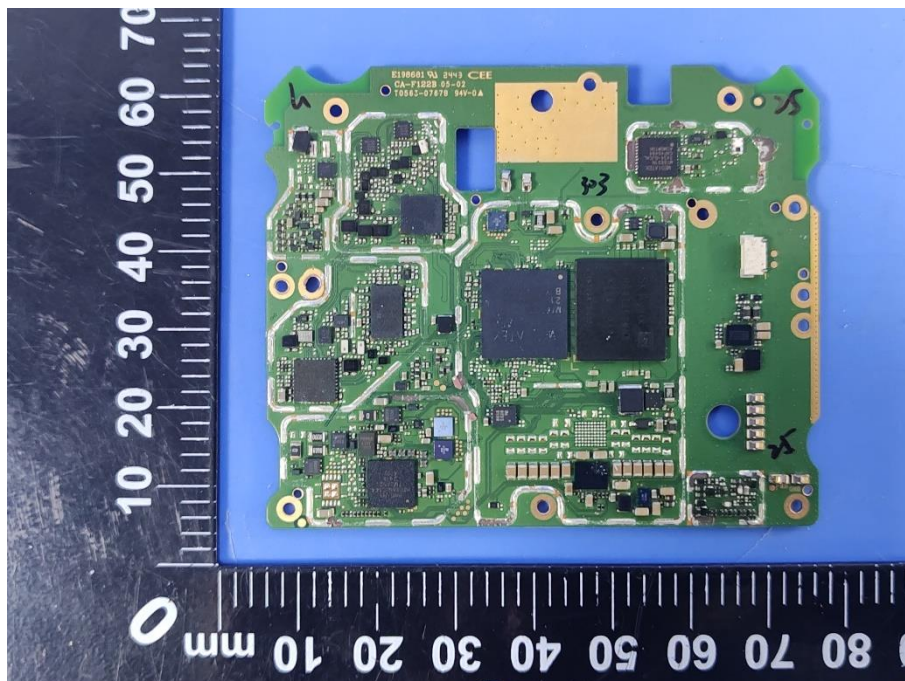


Photo 32

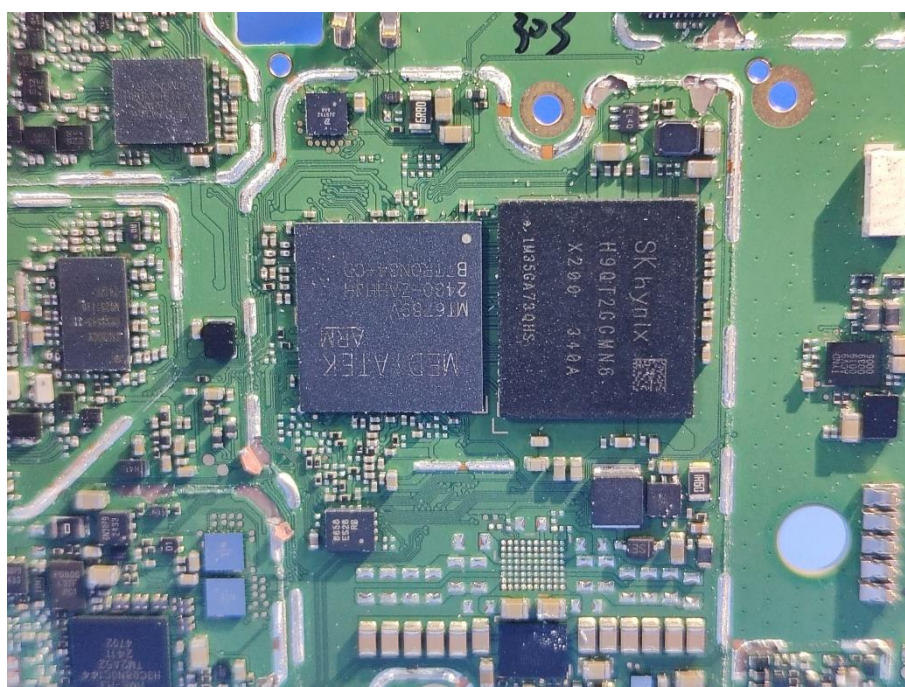






Photo 33

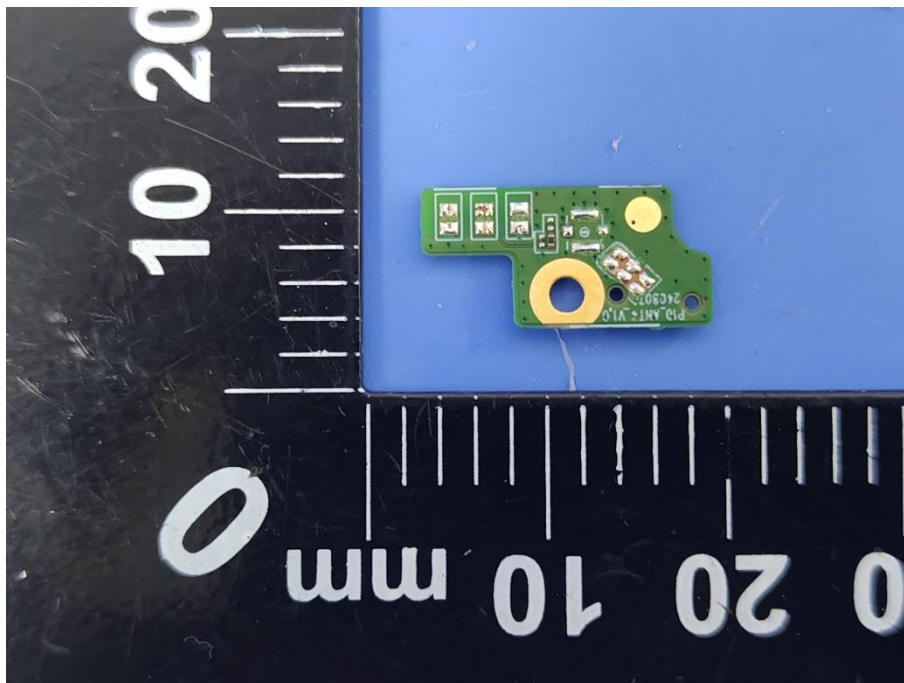
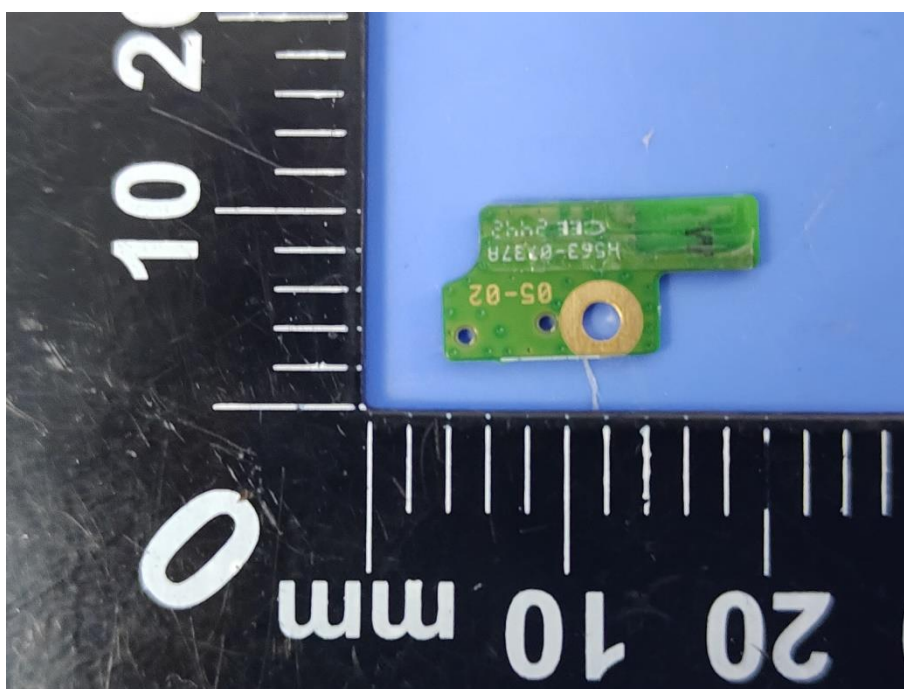


Photo 34



\*\*\*\*\*END OF THE REPORT\*\*\*\*\*