

# 三合一折叠式磁吸无线充 产品说明书

## 前言

尊敬的用户，感谢您选购我公司产品。  
为了进一步了解产品，使用前请仔细阅读本说明书。  
祝您体验愉快！

## 产品示意图

1. 无线充电区域1 ( wireless phone )
2. 无线充电区域2 ( TWS )
3. 无线充电区域3 ( iwatch )
4. Type-C USB



## 产品规格

输入: 9V-2A, 12V-2A  
输出1: 15W Max ( Wireless Phone )  
输出2: 5W Max ( TWS )  
输出3: 2.5W Max (iWatch)  
产品尺寸: 120\*60\*14 (mm)

## 注意事项

1. 仅限在室内和干燥环境下使用，避免放置于高温、潮湿、油污的环境中使用。
2. 严禁将产品在强磁环境下放置或使用。
3. 避免放在婴儿和儿童容易触及的地方。
4. 若产品进水或粘有污物、尘土，请勿使用。
5. 非专业人员请勿擅自拆开维修。

## 产品清单

产品x1 说明书x1 数据线x1

# 3in1 Foldable Magnetic Wireless Charger Product Manual

## preface

Thankyou for purchasing our company'S Products.  
For optimum operation , please read this manual carefully  
before use.

## product Details

1. wireless charging Area 1 ( wireless phone )
2. wireless charging Area 2 ( TWS )
3. wireless charging Area 3 ( iwatch)
4. Type- C USB



## specification

Input: 9V-2A, 12V- 2A  
Output1: 15W Max ( Wireless Phone )  
Output2: 5W Max ( TWS )  
Output3: 2.5W Max (iWatch)  
Size: 120\*60\*14 (mm)

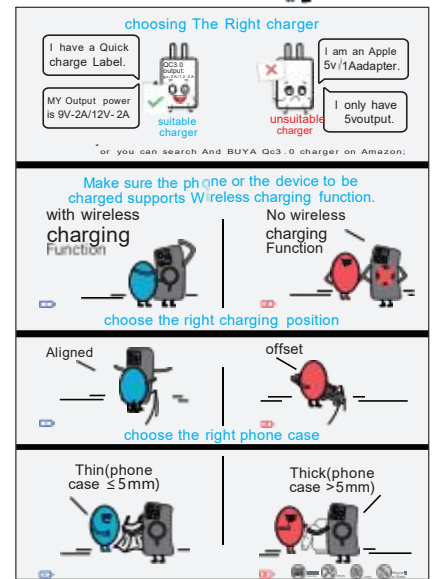
## product and safety info

1. Do not store or use it in high temperature, humidity or dirty areas.
2. Do not store or use it in strong magnetic fie ds.
3. keep out of the reach of chi dren.
4. Do not expose to water or heavy dust. keep it dry and C ean .
5. Non-professional workers do not maintenance device without authorization .

## package content

1 x product 1 x user Manual  
1 x charging cable

## wireless charging Guide



## FCC WARNING

This device complies with part 15 of the FCC Rules. Operation is subject to the following two conditions: (1) this device may not cause harmful interference, and (2) this device must accept any interference received, including interference that may cause undesired operation.

Any changes or modifications not expressly approved by the party responsible for compliance could void the user's authority to operate the equipment.

NOTE: This equipment has been tested and found to comply with the limits for a Class B digital device, pursuant to Part 15 of the FCC Rules. These limits are designed to provide reasonable protection against harmful interference in a residential installation. This equipment generates, uses and can radiate radio frequency energy and, if not installed and used in accordance with the instructions, may cause harmful interference to radio communications. However, there is no guarantee that interference will not occur in a particular installation. If this equipment does cause harmful interference to radio or television reception, which can be determined by turning the equipment off and on, the user is encouraged to try to correct the interference by one or more of the following measures:

- Reorient or relocate the receiving antenna.
- Increase the separation between the equipment and receiver.
- Connect the equipment into an outlet on a circuit different from that to which the receiver is connected.
- Consult the dealer or an experienced radio/TV technician for help.

To maintain compliance with FCC's RF Exposure guidelines, This equipment should be installed and operated with minimum distance between 20cm the radiator your body: Use only the supplied antenna.