

## Operating Instructions

Please read the operating instructions carefully before use

### Function Introduction //

The product expands the Android system platform through the car USB interface, support the installation of various APP to realize music, video playing and other entertainment functions, and support mobile phone interconnection and access to realize wireless CarPlay and wireless Android Auto functions.

### Compatible Cars And Mobile Phones //

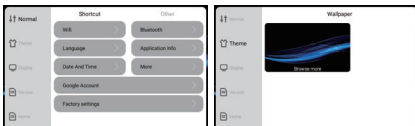
Applicable Models: The original car with wired CarPlay  
iPhone: For iOS 10.0 and above  
Android phone: Support Android 11.0 and above

### Connection Instruction //

1. Insert the product into the USB interface of your car.
2. Click "CarPlay" on the screen in original car system interface, then enter to product's Android system.

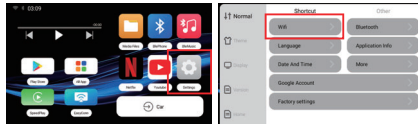


3. Click the "Settings" icon to connect to network, change languages, customize wallpapers etc.

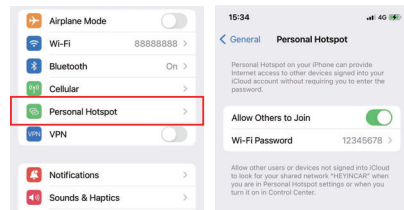


### Networking And APP Installation //

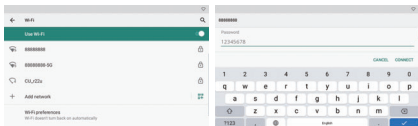
1. Click "Settings" on Android system interface - [WiFi] to enter the interface for connecting to the network.



2. Turn on the hotspot of your mobile phone or other network-sharing devices.



3. Select [WLAN] to enter the network list, then select the network and fill the password to connect it.



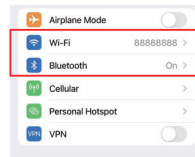
4. Click the "Play Store", there you can download various apps, which makes your driving life joyful.

### Wireless CarPlay/Android Auto Connection Instructions //

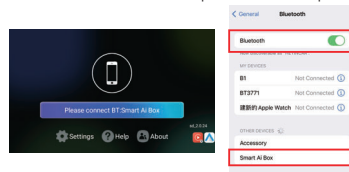
1. Click the "SpeedPlay" icon to enter the connection interface.



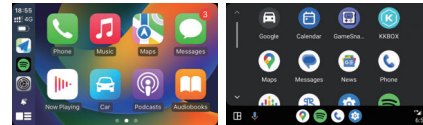
2. Turn on the Bluetooth & WiFi of the iPhone/Android Phone.



3. Search the Bluetooth name displayed on the car screen in the Bluetooth list of the mobile phone, and click pairing.



4. Wait for the connection to succeed, and the wireless CarPlay/Android Auto will work.



### TF Card Slot Instruction //

TF Card slot: Expandable up to 128GB (TF Card is inserted with the metal face up)



### Product Specification //

CPU: Qualcomm QCM2290, quad-core 64-bit ARM Cortex-A53 processor @2.0GHz  
GPU: Adreno™ 702  
Chip process: 11nm process  
Operating system: Android system  
Storage: 2GB (RAM) + 16GB (ROM)  
Network: 802.11a/b/g/n, 2.4/5GHz  
Bluetooth: 5.0BR/EDR  
Power input: 5V==1A  
Temperature: -20 °C to 75 °C

### After-sales Service //

Dear client, hello! Thank you for choosing and trusting us among thousands of merchants. It is our luck to meet you in the vast network. I hope you can feel our sincerity and intention when you using our products. Please contact us at any time if you have any questions. We will continue to serve you wholeheartedly and give you a satisfactory answer regardless of pre-sales or after-sales question. The final interpretation right of product after-sales service belongs to the company.

Thank you sincerely, please keep in touch!

### Warranty Card

Name		Purchase date	
Phone number		E-Mail	
Address			
Dealer's name			
Warranty content			

### Certificate

Product model: \_\_\_\_\_  
Product specification: PASS  
date of manufacture: \_\_\_\_\_  
examination clerk: \_\_\_\_\_

**FCC Warning:**

This equipment has been tested and found to comply with the limits for a Class B digital device, pursuant to part 15 of the FCC Rules. These limits are designed to provide reasonable protection against harmful interference in a residential installation. This equipment generates, uses and can radiate radio frequency energy and, if not installed and used in accordance with the instructions, may cause harmful interference to radio communications. However, there is no guarantee that interference will not occur in a particular installation. If this equipment does cause harmful interference to radio or television reception, which can be determined by turning the equipment off and on, the user is encouraged to try to correct the interference by one or more of the following measures:

- Reorient or relocate the receiving antenna.
- Increase the separation between the equipment and receiver.
- Connect the equipment into an outlet on a circuit different from that to which the receiver is connected.
- Consult the dealer or an experienced radio/TV technician for help.

**Caution:** Any changes or modifications to this device not explicitly approved by manufacturer could void your authority to operate this equipment.

This device complies with part 15 of the FCC Rules. Operation is subject to the following two conditions:

(1) This device may not cause harmful interference, and (2) this device must accept any interference received, including interference that may cause undesired operation.

This equipment complies with FCC radiation exposure limits set forth for an uncontrolled environment. This equipment should be installed and operated with minimum distance 20cm between the radiator and your body.