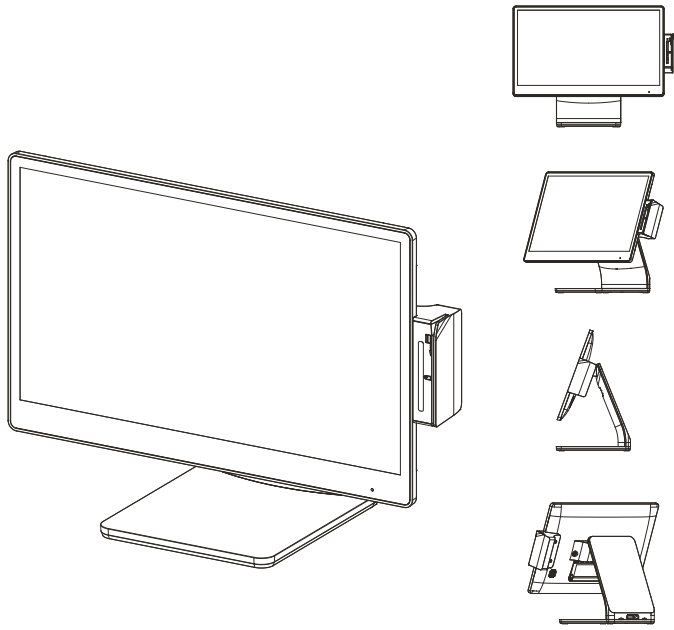


Installation Guide



ACT

Check the model name/utility version and download the applicable utility on www.posbank.com

⚠ Cautions

● Warning

- Instruction for low reliability or fire/electric shock/damage
1. Do not disassemble or remodeling the products except professional engineer.
 2. Do not pour water or liquid into the system.
 3. Ground the product before install the system.
 4. Do not touch power cord during extreme thunder storm.
 5. Do not touch power cord with wet hand.
 6. Do not pull power cord or other peripheral device cables.
 7. If abnormal smell, sound, or smoke is occurred, remove power cord immediately and call to your close service center.
 8. Do not use damaged power cord or plug (outlet).
 9. Keep away the product and vinyl package from children.
 - Children can be choked, if they pull the vinyl over their head.
 10. In case of boot failure after abnormal(forced) termination, please unplug the power cord and plug it in again.
 11. This device, its installed OS and software are vulnerable to security, so you should use a separate security program.
- Do not use unnecessary shared folders / Set up PC firewalls / Do not install illegal software / Illegal OS, no software, no unverified site access
- ※ In case of hacking or equipment malfunction, the user shall not be held responsible.

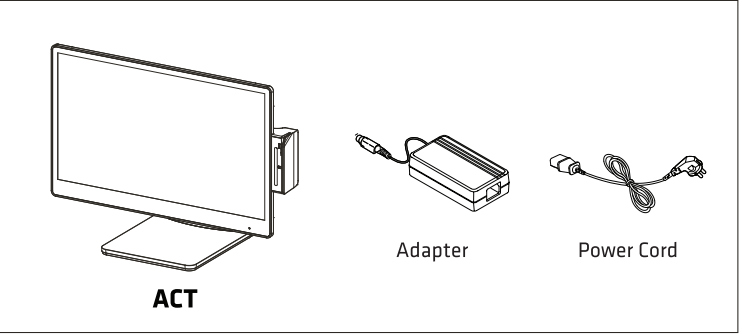
● Caution

1. We recommend using proper power voltage (110V/220v) as a precaution against fire and electrical shock
2. Before install the product, check suitable and safe place to use.
 - Find well ventilated place. Avoid the place close to possibility of fire.
 - Avoid high moisture and humidity.
3. Do not install or keep the product on steep place.
 - It can cause damage or malfunction by falling (crash).
4. Be aware of electro-static on PCB of system with anti-static appliance;
 - This may cause low reliability and short life term.
5. Place a product away from highly static areas.
6. Do not put metal or obstacle in product.
7. Use product in simple power cord plug-in circumstance.
8. Only use adapter supplied.
 - If an incorrect adapter is used, the product's performance may decrease and there is an increased risk of explosion.
9. Use standard outer port.
 - Port can be damaged by connecting not standardized device.

1. Package contents

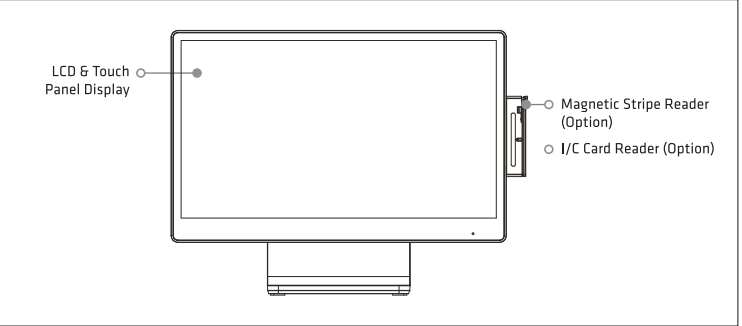
The following items are included when you purchase this product.
If any of these items are damaged or missing, contact your dealer for assistance.

▶ Packing list

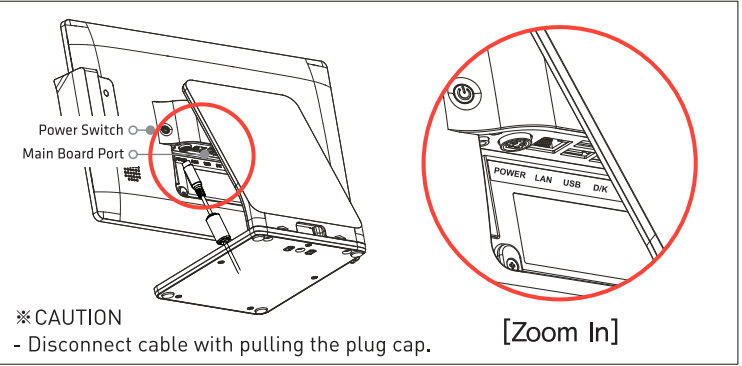


2. Configuration

▶ Front View



▶ Side View & Power connecting



3. Power management

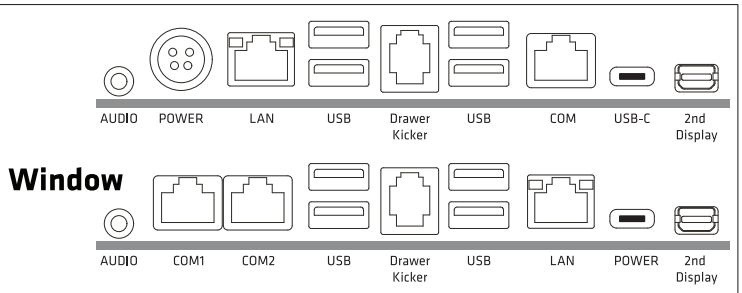
Android

- ※ To turn on the power, press and hold the power button for a few seconds.
- ※ To turn off the power, press and hold the power button for a few seconds and select the a [Power off] displayed on the screen.

Window

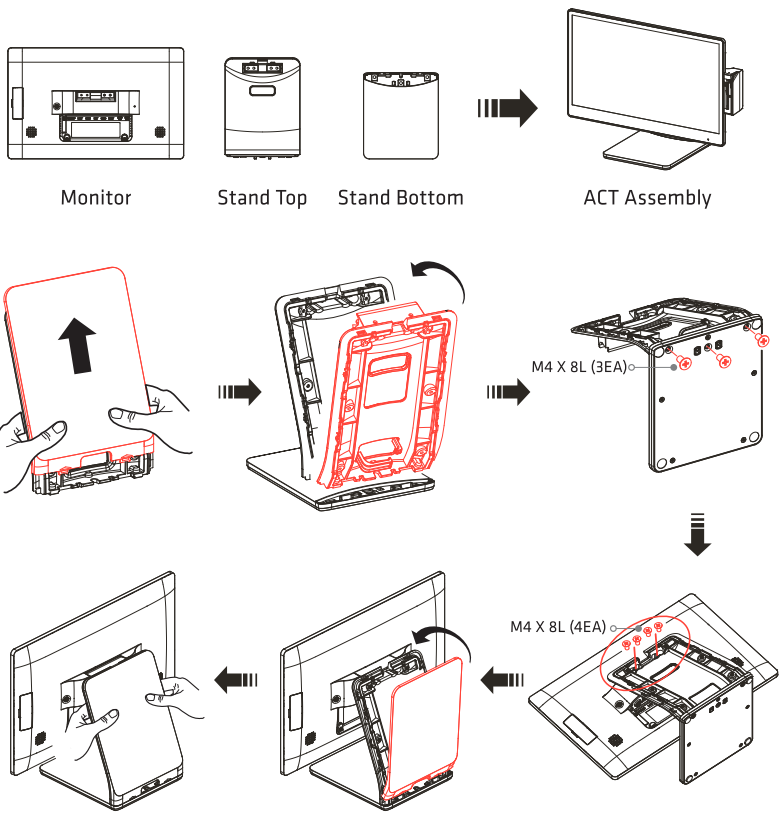
- ※ To turn on the power, press and hold the power button.
- ※ To turn off the power, → → clicking [Shutdown]

4. I/O specifications

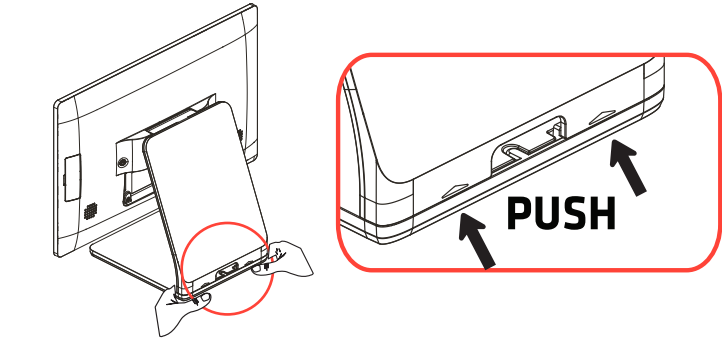


※ I/O ports may differ according to product model or options.

5. Stand Assembly



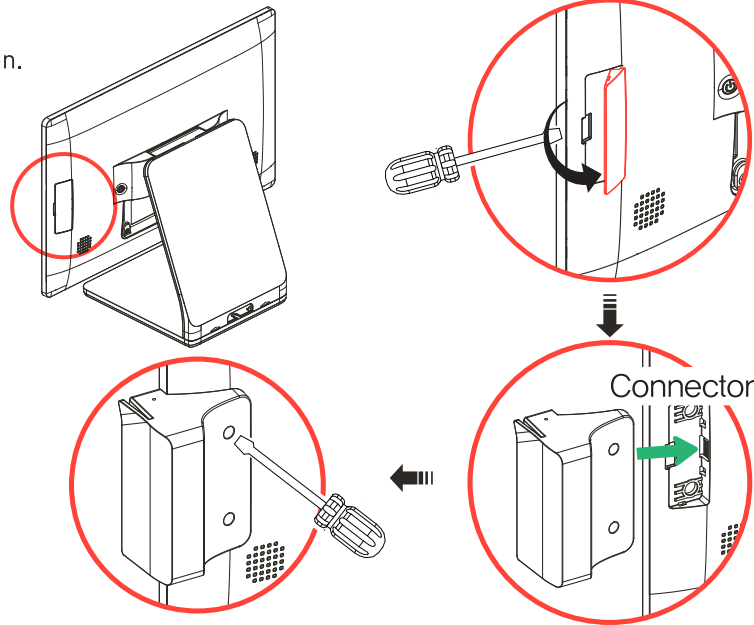
※ Remove an Assembled Stand Cover



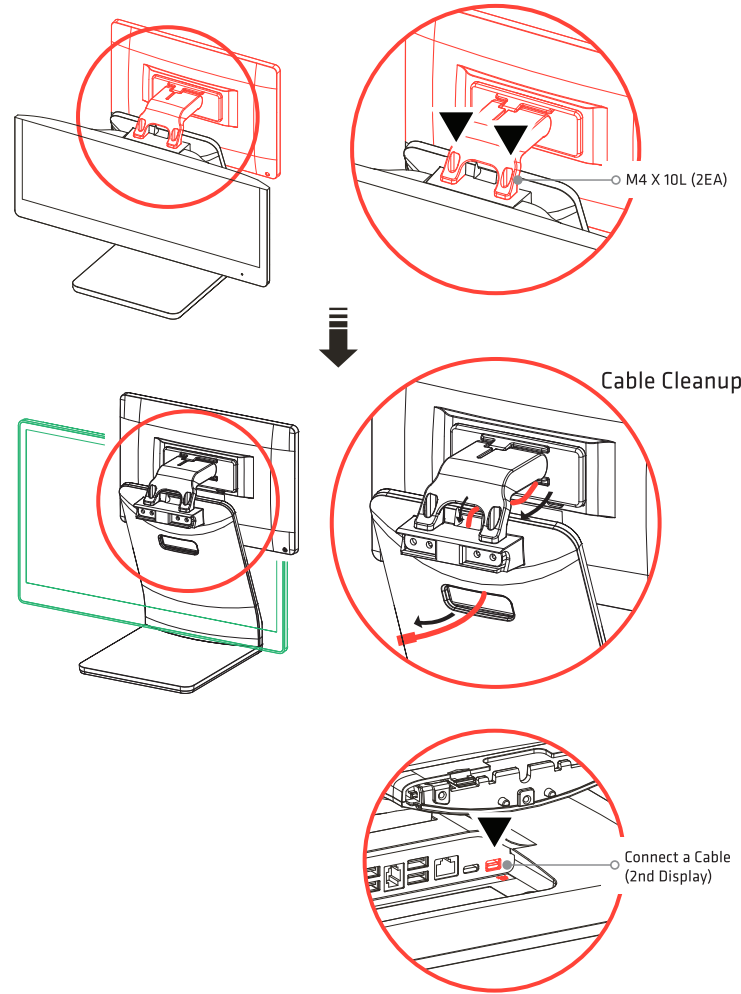
6. Optional item

- ※ Caution: Power AC cord must be disconnected before installing or removing optional device.
- ※ Specifications may differ according to product model or options.

6-1. MSR Assembly (Option:SCR)



6-2. 2nd Display (9.7inch, 10.1inch, 13.3inch)



Information

* Copyright

This publication, including all photographs, illustrations and software, is protected under international copyright law with all rights reserved to the manufacturer. Neither this manual, nor any of the material contained herein, may be reproduced without express written consent of the author.
This manual are furnished for informational use only.
The information contained in this document is subject to change without notice.
We make no warranty of any kind with regard to this material, including, but not limited to, the implied warranties of merchantability and fitness for a particular purpose. We shall not be liable for errors contained herein or for incidental or consequential damages in connection with the furnishing, performance, or use of this material.

* Warranty & Service

1. For specific technical follow-up service and customer support, contact distributor in your country (seller or importer).
2. We guarantee our POS terminal product and its parts against defects in materials and workmanship under proper use for a standard period of 2 years from the date of original purchase.
3. For following cases, we will charge for repair and delivery.
 - HDD & SSD partition division or re-installation of newly purchased OS which is requested by user.
 - Customer's requests for connecting and setting-up Internet or Network (LAN).
 - Re-installation of OS or software by customer's request.
 - Request of instruction or service about other company's software (Contact the relevant company).
 - Re-installation or reset of OS or software which is not caused by Hardware defect.
 - Request for installation of optional parts (memory, SSD, etc.) purchased by customer additionally.
 - Installation request or inquiry of new kind of devise purchased by customer additionally (Contact the relevant company).
 - Requesting engineer's visit or instruction without any specific problem.
 - Request related to changing place caused by moving or transfer.
 - Malfunction caused by user's carelessness, intention and mistake.
 - Disorder caused by not suitable environment according to 'Warning' and 'Caution' instructions.
 - Breakdown caused by user's mistake and careless treatment (falling, drowning, clash, crack).
 - Breakdown caused by random repair or remodeling.
 - Defect caused by connecting incorrect AC adapter.
 - Malfunction caused after getting inappropriate repair by not assigned service center.
 - Error caused by using optional devices (cable, adaptor, paper, etc.) not supplied by us.
 - Abnormal functioning caused by using pirated Software and not using original Software.
 - Reinstalling printer driver because of environment change (system change/reset) or virus infection.
 - Using unstable AC power which cannot absorb impulsive current of electricity.
 - Breakdown caused by natural disaster (fire, earthquake, flood, etc.)
 - Reaching the life span of expendable devices (mechanism, auto cutter, battery, etc.).
4. The WINDOWS OS is not related to policies of VAN and POS manufacturers and is subject to policies of Microsoft.



FCC ID : 2BASH-ACT1560

This device complies with Part 15 of the FCC Rules. Operation is subject to the following two conditions: (1) this device may not cause harmful interference, and (2) this device must accept any interference received, including interference that may cause undesired operation.

FCC compliance information

THIS DEVICE COMPLIES WITH PART 15 OF THE FCC RULES.

Operation is subject to the following two conditions: (1) This device may not cause harmful interference, and (2) This device must accept any interference received, including interference that may cause undesired operation.

Note: This equipment has been tested and found to comply with the limits for a Class B digital device, pursuant to part 15 of the FCC Rules. These limits are designed to provide reasonable protection against harmful interference in a residential installation. This equipment generates, uses, and can radiate radio frequency energy and, if not installed and used in accordance with the instructions, may cause harmful interference to radio communications. However, there is no guarantee that interference will not occur in a particular installation. If this equipment does cause harmful interference to radio or television reception, which can be determined by turning the equipment off and on, the user is encouraged to try to correct the interference by one or more of the following measures:

- Reorient or relocate the receiving antenna.
- Increase the separation between the equipment and receiver.
- Connect the equipment into an outlet on a circuit different from that to which the receiver is connected.
- Consult the dealer or an experienced radio/TV technician for help.

Modifications not expressly approved by the manufacturer may void the user's authority to operate the equipment under FCC rules.