



🌐 heygears.com

✉ info@heygears.com

☎ Tel: +1 (318) 353-4295 (Global) / +1 (949) 418-9418 (USA) / +44 148-396-8549 (EU)

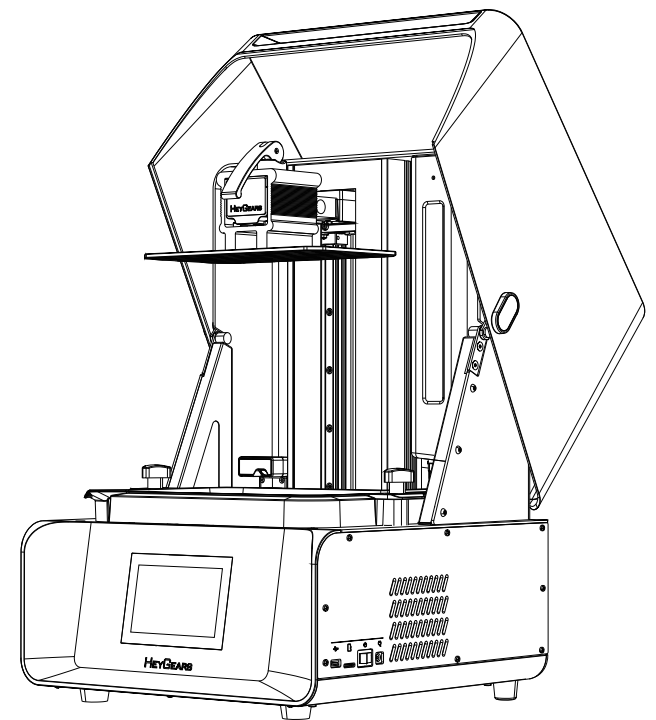
📍 USA-17931 Sky Park Circle, Suite E, Irvine, CA, 92614
CHN-Block B2, 501, 601, Enterprise Accelerator, Kaifu District, Guangzhou City

Follow us @HeyGears



Reflex RS

Professional-Grade Printer

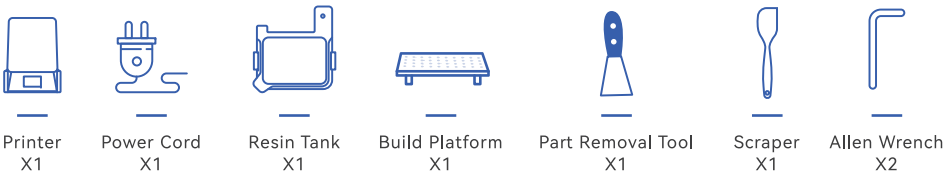



Please make sure to read and understand this Quick Start before unpacking and installing.

Thank you for choosing HeyGears. For your own safety, please operate as per this Quick Start. If you fail to comply with the instructions in this manual, HeyGears will not be liable for the consequential damages unless required by all applicable laws and regulations.

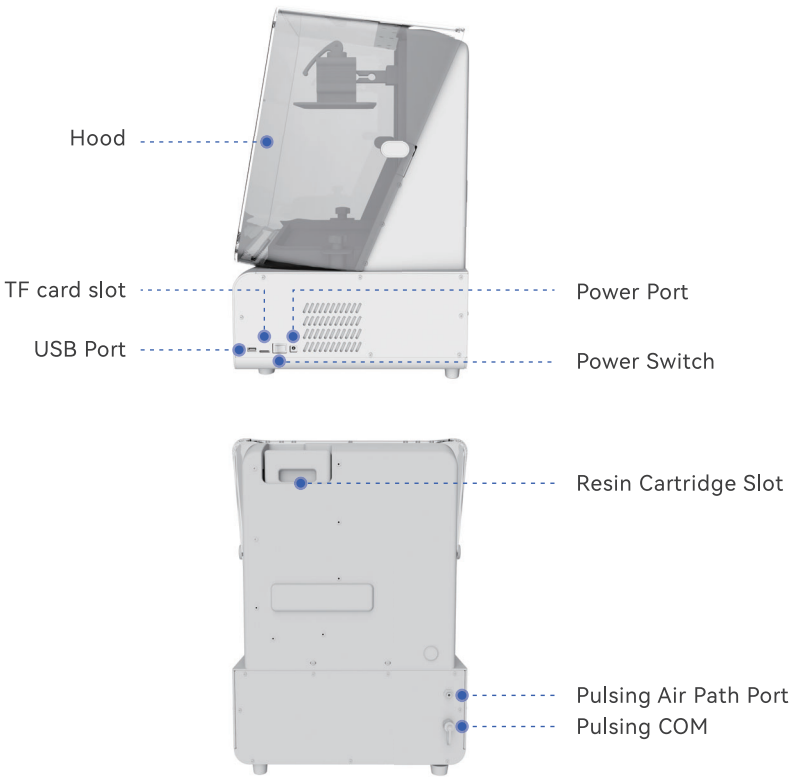
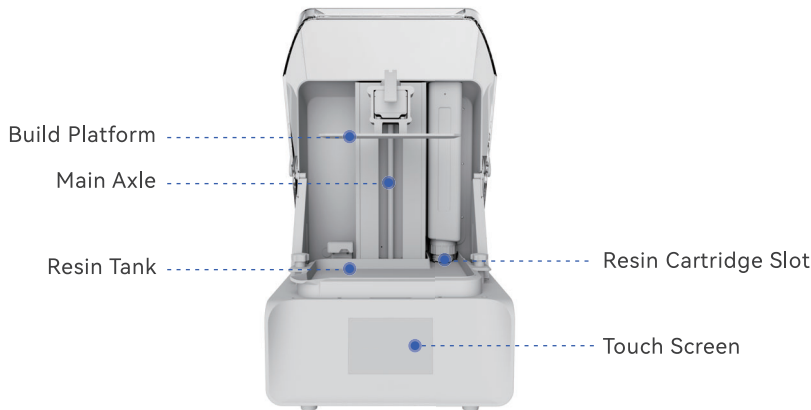
Please keep this operation manual properly for future reference. The pictures are for reference only and the products are subject to the actual product.

1 Items & Parameters

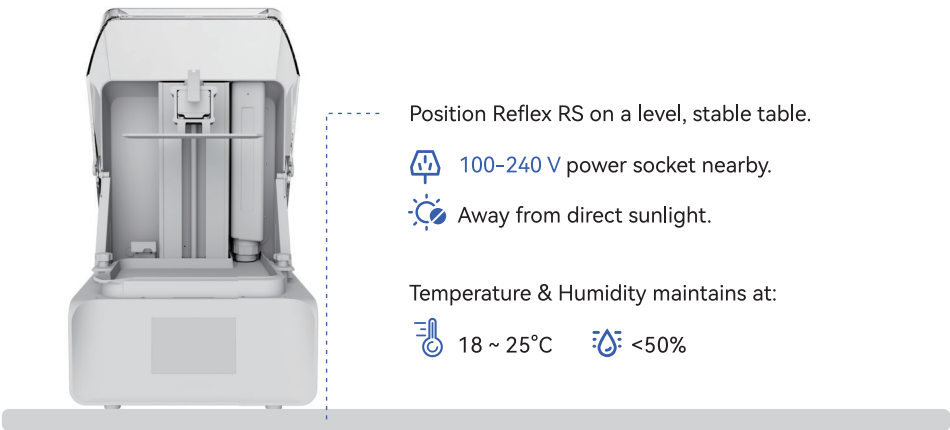


Name	UltraCraft Rapid Production System	Input	24V  7.5 A
Model	UltraCraft Reflex RS	Weight	20 kg
Dimensions	380*360*584 mm	Power	180 W

2 Components



3 Installation Requirements

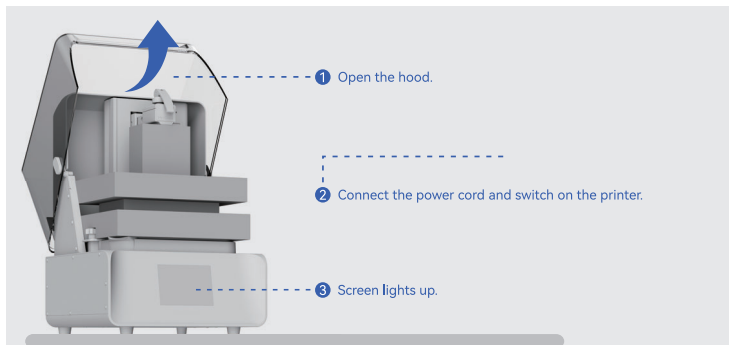


4 Operation Steps

STEP 1

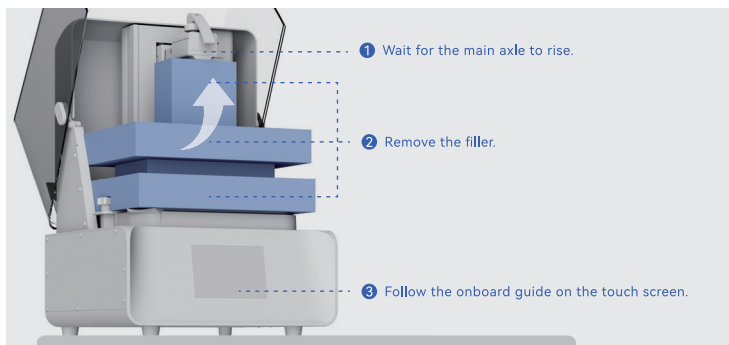
Place the printer on a level, stable table, and check its appearance to confirm if it's in good condition. Lift the provided power cord in the power port, connect it to power supply and turn on the power switch. The touch screen lights up, indicating the power is successfully connected.

***Please DO NOT remove the filler in the cabinet before connecting to power.**



STEP 2

Wait until the printer's main axle rises to top, and then remove the filler in the cabinet. Follow the onboard guide on the touch screen to finish installation.



STEP 3

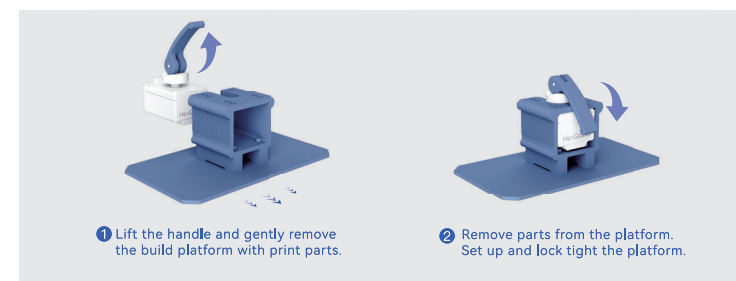
Afterward, please download Blueprint Studio from <https://www.heygears.com/SAP/Blueprint>, follow its onboard guide for print preparation (pre-processing) and send the finished printable slice file to your Reflex RS. Then print it on your printer by operating on the printer's touch screen. Videos of guides are available in Help Center on Blueprint Studio.

Download Blueprint >>>

1 Download Blueprint Studio.

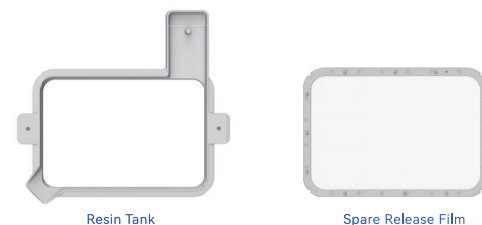
STEP 4

When printing is done, open the hood, unlock and take out the build platform. Then follow the instructions for post-processing like washing, part removing, support removing and post-curing, etc..



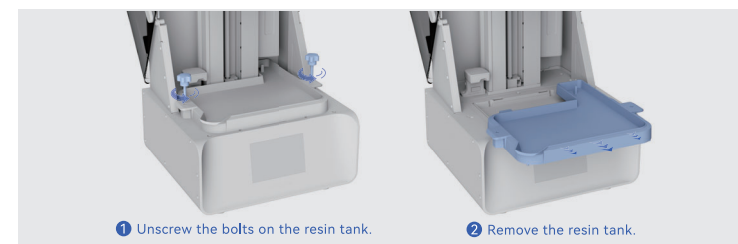
5 Release Film Replacement

Images below are examples of the resin tank and the spare release film.



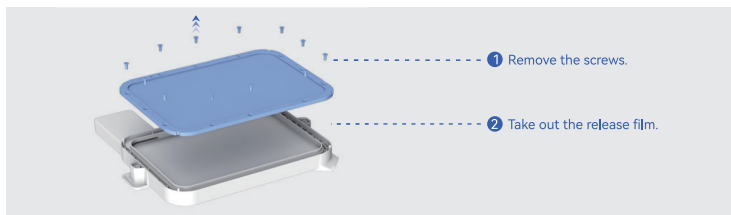
STEP 1

Remove the resin cartridge. Then unscrew (counterclockwise) the bolts on both sides of the resin tank, and lift the tank to remove it. If there's resin or any residues in it, make sure to clean it well, and only then can you remove its release film.



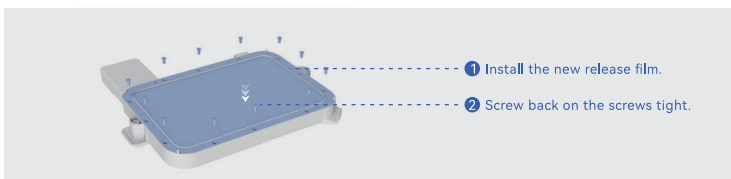
STEP 2

Remove all the screws on the release film from the bottom of the resin tank with the provided wrench. Then remove the film.



STEP 3

Set up a new release film back onto the tank. Screw back tight the screws on the diagonals and then other screws. When the film is installed well in place, its frame should be level with the resin tank frame. Mount back the tank onto the printer.



6 Cautions



01

Always remember to close the hood in time whenever you open it for operation. Do NOT open the hood during printing, or print precision might be affected due to dusts, vibration or so.



02

Plastic components such as hood and touch screen are not resistant to long-time exposure to resin or alcohol. Please wipe them clean if there's resin or alcohol on them.



03

Please place the printer and resin cartridges properly, away from any light, dusts, or direct sunlight, or printing quality or precision might be affected.



04

Keep the device away from fire.



05

When you use your Reflex RS, please pay attention to whether there's any resin on the projection screen. If any, it indicates that the resin tank's release film might have been broken and is leaking resin, which might cause damages to the printer. In this case, clean off the resin as soon as possible, enter the printer's settings and project a pure white image to check the printer's condition. If the printer does not work properly, please contact HeyGears Support.

Caution: The user is cautioned that changes or modifications not expressly approved by the party responsible for compliance could void the user's authority to operate the equipment.

This device complies with Part 15 of the FCC Rules. Operation is subject to the following two conditions: (1) this device may not cause harmful interference, and (2) this device must accept any interference received, including interference that may cause undesired operation.

NOTE: This equipment has been tested and found to comply with the limits for a Class B digital device, pursuant to Part 15 of the FCC Rules. These limits are designed to provide reasonable protection against harmful interference in a residential installation. This equipment generates, uses and can radiate radio frequency energy and, if not installed and used in accordance with the instructions, may cause harmful interference to radio communications. However, there is no guarantee that interference will not occur in a particular installation.

If this equipment does cause harmful interference to radio or television reception, which can be determined by turning the equipment off and on, the user is encouraged to try to correct the interference by one or more of the following measures:

- Reorient or relocate the receiving antenna.
- Increase the separation between the equipment and receiver.
- Connect the equipment into an outlet on a circuit different from that to which the receiver is connected.
- Consult the dealer or an experienced radio/TV technician for help.

FCC Radiation Exposure Statement

This equipment complies with FCC radiation exposure limits set forth for an uncontrolled environment. This equipment should be installed and operated with a minimum distance of 20cm between the radiator and your body.

This transmitter must not be co-located or operating in conjunction with any other antenna or transmitter.

