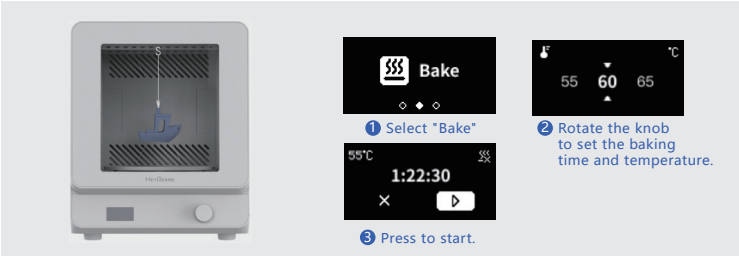


STEP 2

Turn the knob to select "Bake" and press the knob to enter the baking parameter setting page, then you can set the baking time and temperature. After setting, you can press to start.



The diagram illustrates the control interface of the curing unit. It shows a physical unit on the left with a digital display and a control knob. On the right, three panels detail the steps: 1. Select "Bake" (indicated by a flame icon), 2. Rotate the knob to set the baking time and temperature (showing a range from 55 to 65 °C), and 3. Press to start (showing a timer at 1:22:30).

STEP 3

Take out the models when finished.



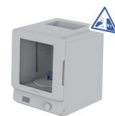
The diagram shows the process of removing the cured items. It consists of three panels: 1. Open the cabinet door (indicated by a blue arrow pointing left), 2. Take out the items (indicated by a blue arrow pointing right), and 3. Close the door (indicated by a blue arrow pointing right).

5 Caution



01

Do not open the door during curing.



02

The temperature of curing/baking process may be high, please do not touch or block the air outlet, and be careful of burns when removing the finished cured/baked parts.



03

Fast curing mode can be selected according to the needs of direct curing, or the parts can be cured in water. For underwater curing, you should prepare your own glass container with high light transmission, which will improve the surface quality of the cured parts. It is also necessary to avoid damage to the device due to water spillage inside the device.



04

Do not look directly at the device if there is still residual light when opening the door and removing the parts. It is recommended to wear goggles for operation.



© 广州黑格智造信息科技有限公司
www.heygears.com sales@heygears.com
+86 020-22042035 (China) / +1 (318) 353-4295 (Global)
中国：广东省广州市黄埔区开源大道11号企业加速器B2栋5-6层
U.S.: 17931 Sky Park Circle, Suite E, Irvine, CA, 92614

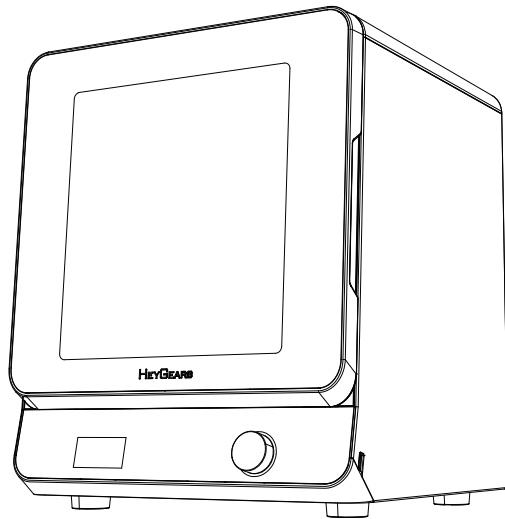


快速使用手册 V1.0



Cure

Personal Desktop Post Curing Unit



This quick start must be read and understood before operating the machine.

Thank you for choosing HeyGears. For safety, please contact HeyGears support staff for assistance regarding unpacking and installing the machine. If you fail to comply with the instructions in this manual, HeyGears will not be liable for the consequential damages unless required by federal and local ordinances. Please keep this operation manual properly for future reference. The pictures are for reference only and the products are subject to the actual product.

1 Items & Parameters



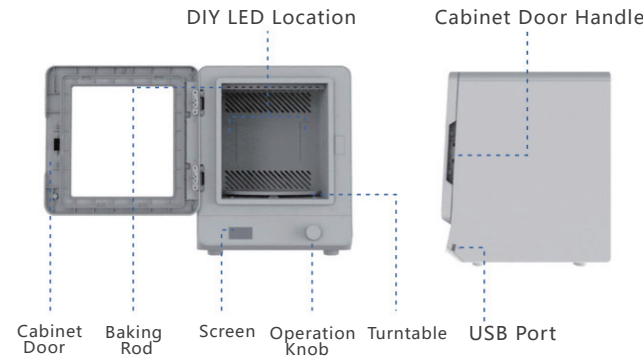
UltraCraft Cure
X1



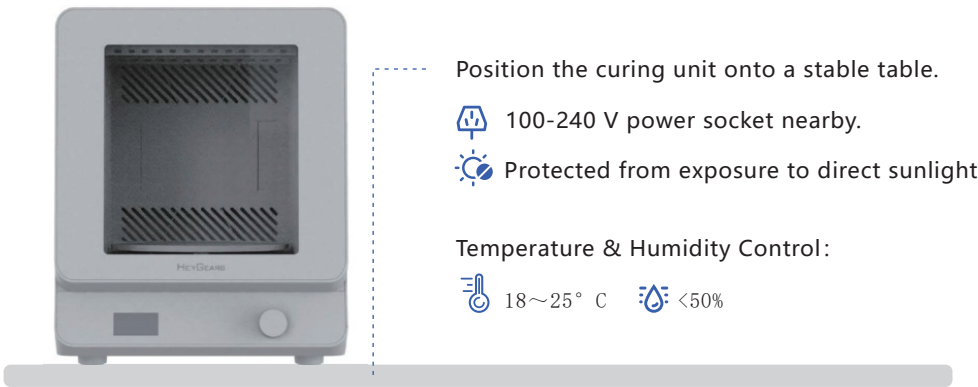
Power Cord
X1

Name	UltraCraft Post Curing Unit	Input	100-240 V~ 50/60 Hz
Model	UltraCraft Cure	Weight	12 kg
Size	370*387*456 mm	Power	350 W

2 Components



3 Installation Requirements



4 Operation Steps:

Curing Mode

STEP 1

Take out the curing unit and place it on an even and horizontal surface. Take out the power cord supplied in the package, and connect the unit to the power supply as shown in picture. Turn on the power switch, then the screen lights up to indicate that the power is successfully connected.

1 Connect to the power supply

2 Turn on the switch

3 Screen lights up

STEP 2

Open the cabinet door and place the clean models (Remove supports as required) on the turntable, and then close the door.

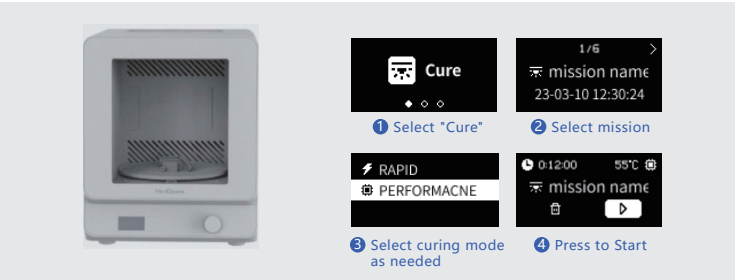
1 Open the cabint door

2 Place the models on the turntable

3 Close the door

STEP 3

Rotate the knob and select "Curing" by pressing the knob down to enter jobs list. Rotate the knob to select curing job and press to select curing mode (Quick/High Performance) according to your needs, then rotate the knob to the start button and press down. If you want to customize the curing time and temperature, turn the knob to the "Customize" menu at the end of the task list.



STEP 4

Open the cabinet door when finished and take out the models.



Baking Mode

STEP 1

If baking function is needed, open the door and hang the items in the hole of the rod with hooks, or place them on the turntables, and then closde the door to start baking.



FCC Compliance Information Statement

Caution

Caution: The user is cautioned that changes or modifications not expressly approved by the party responsible for compliance could void the user's authority to operate the equipment.

This device complies with part 15 of the FCC Rules. Operation is subject to the following two conditions:

- ① This device may not cause harmful interference, and
- ② this device must accept any interference received, including interference that may cause undesired operation.

NOTE

This equipment has been tested and found to comply with the limits for a Class B digital device, pursuant to Part 15 of the FCC Rules. These limits are designed to provide reasonable protection against harmful interference in a residential installation. This equipment generates, uses and can radiate radio frequency energy and, if not installed and used in accordance with the instructions, may cause harmful interference to radio communications. However, there is no guarantee that interference will not occur in a particular installation. If this equipment does cause harmful interference to radio or television reception, which can be determined by turning the equipment off and on, the user is encouraged to try to correct the interference by one or more of the following measures:

- Reorient or relocate the receiving antenna.
- Increase the separation between the equipment and receiver.
- Connect the equipment into an outlet on a circuit different from that to which the receiver is connected.
- Consult the dealer or an experienced radio/TV technician for help.

FCC Radiation Exposure Statement

This equipment complies with FCC radiation exposure limits set forth for an uncontrolled environment. This equipment should be installed and operated with a minimum distance of 20cm between the radiator and your body.

This transmitter must not be co-located or operating in conjunction with any other antenna or transmitter.



HEYGEARS

