

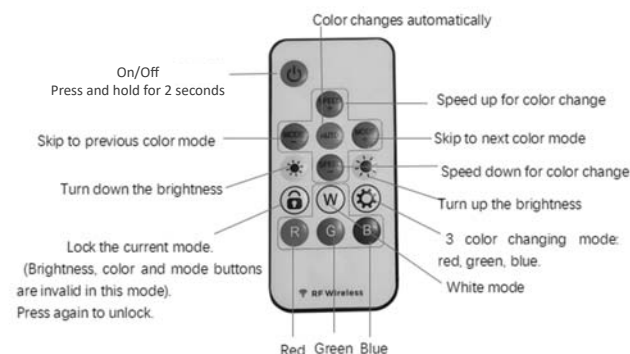
## 5.Remote Control

Please remove the insulation film at the bottom of the remote control.



Please ensure the light is turned on when you use this remote control.

One remote control can control all lights, no need to aim at the lights one by one. (Press longer when some lights don't response. If it still doesn't work, please try to replace a new battery for the remote control or charge the LED pool light.)



## 6.FCC Statement

This device complies with Part 15 of the FCC rules. Operation is subject to the following two conditions: (1) this device may not cause harmful interference, and (2) this device must accept any interference reviewed, including interference that may cause undesired operation.

Changes or modifications not expressly approved by the party responsible for compliance could void the user's authority to operate the equipment.

Note: this equipment has been tested and found to comply with the limits for a Class B digital device, pursuant to Part 15 of the FCC Rules.

These limits are designed to provide reasonable protection against harmful interference in a residential installation. This equipment generates uses and can radiate radio frequency energy and, if not installed and used in accordance with the instructions, may cause harmful interference to radio communications. However, there is no guarantee that interference will not occur in a particular installation. If this equipment does cause harmful interference to radio or television reception, which can be determined by turning the equipment off and on, and user is encouraged to try to correct the interference by one or more of the following measures:

--Reorient or relocate the receiving antenna.  
--Increase the separation between the equipment and receiver.

--Connect the equipment into an outlet on a circuit different from that to which the receiver is connected.

--Consult the dealer of an experienced radio/TV technician for help.

Note: this device and its antenna(s) must not be co-located or operation in conjunction with any other antenna or transmitter.

## 7.RF Exposure Statement

The device has been evaluated to meet general RF exposure requirement. The device can be used in portable exposure condition without restriction.<sup>4)</sup>

## 8.Correct Disposal of This Product



(Waste Electrical & Electronic Equipment)

This marking shown on the product or its literature indicate that it should not be disposed with other household wastes at the end of its working life.

To prevents possible harm to the environment or human health from uncontrolled waste disposal, please separate this from other types of wastes and recycle it responsibly to promote the sustainable reuse of material resources. Household user should contact either the retailer where they purchased this product or their local government office, for details of where and how they can take item for environmentally safe recycling.

Business users should contact their supplier and check terms and conditions of the purchase contract. This product should not be mixed with other commercial wastes for disposal.

# User Guide



## Rechargeable LED Pool Light



Remote Control



Magnetic or Glue Installation



Type-C Charging



IP68 Waterproof



No Drilling Required



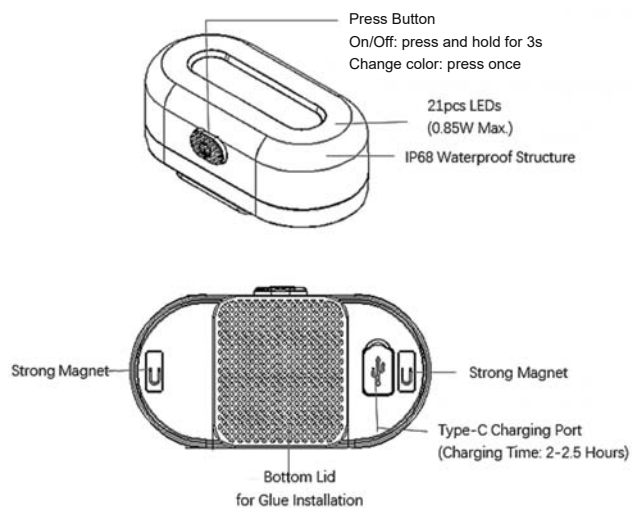
Safe to Use Underwater 1M

Thank you for purchasing this professional rechargeable LED pool light. This light is widely used for indoor or outdoor swimming pools. Please carefully read this user guide before using this product. Please don't hesitate to contact the seller when you have any question or concern.

## 1. Warnings & Cautions

1. For safety, children are not allowed to operate and install this product.
2. Please keep this product away from fire, heat sources and other unsafe sources.
3. The remote control is not waterproof, it is forbidden to submerge remote control under the water.
4. To prolong its lifespan, please clean the product when not in use.
5. Please keep the Type-C charging port clean and dry.
6. Please ensure that Type-C charging port is sealed well before putting the pool light in the water.
7. Avoid using while charging.
8. Working temperature:  $-4^{\circ}\text{F}$ - $104^{\circ}\text{F}$  ( $-20^{\circ}\text{C}$ ~ $+40^{\circ}\text{C}$ ). Don't use in extreme temperature for too long for extending its lifespan.

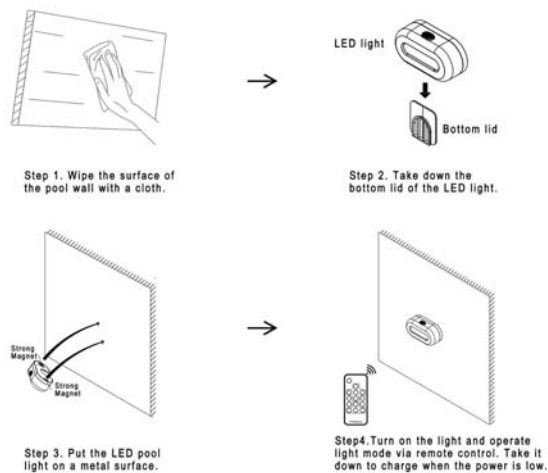
## 2. Product Overview



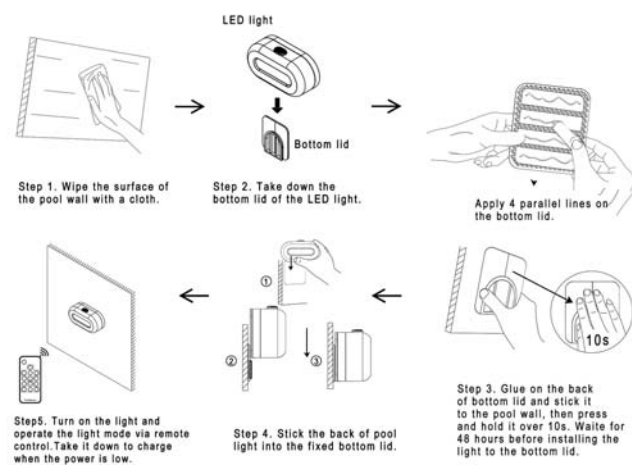
## 3. Install the Light

There are 2 methods to install the light into the swimming pool's wall.

### Method 1. Magnetic Installation



### Method 2. Glue Installation



# User Guide

