

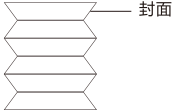
Q30 Plus-智能手表使用说明书（英文版）

产品型号：Q30 Plus

产品名称：智能手表

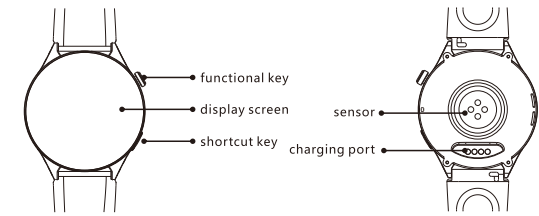
零件图号：-

规格：成形后 83x53mm（风琴折）； 105g哑粉纸



01 Product Introduction

Please read this operation guide carefully before using the watch and keep it properly.



Note:  
Product pictures such as products, accessories, user interfaces shown on the operation guide are for illustration purpose only and actual product may vary due to product update and enhancement.

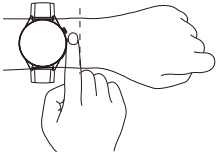
01

Smartwatch User Manual  
Q30 Plus

02 Wearing

Wear your watch one finger from the wrist bone and adjust the strap tightness to ensure the heart rate sensor collects data properly.

Note:  
Too loose wearing may affect the accuracy of heart rate monitoring data.



02

4. Do not place the device in direct sunlight, such as car dashboard or window ledge.  
5. Do not place the device near heat source or naked flames, such as electric heaters, microwave ovens, ovens, water heaters, candles and other places where high temperature may be generated.

Water and dust resistant:  
This device shows water-resistant and dust-proof performance under specific environments after being tested.

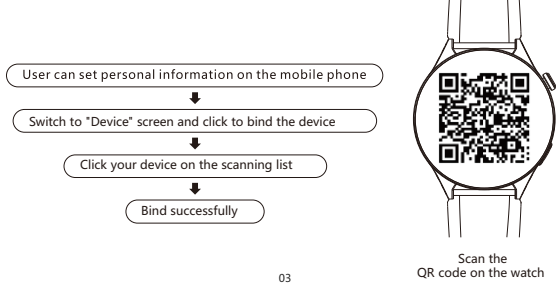
Children Health:  
1. This device and its accessories may contain some small parts, please keep the device and its accessories out of the reach of children. Children may inadvertently damage this device and its accessories, or swallow small part that may result in a gastric shock or other hazards.  
2. This device is not a toy and children should use it under the supervision of an adult.

Data Security:  
Using unauthorized third party software to upgrade your device's firmware and system may cause the device to malfunction or lead to the security risks such as leaking your personal information. It is recommended to use online upgrade or consult official customer service for the upgrade.

09

03 Connection

Scan QR code or search "GloryFit" in AppStore (IOS) or Google Play (Android) to download and install the app



03

Scan the QR code on the watch

08 Limitation of Liability

Disclaimer of Liability:  
The contents of this manual are provided by "as is" and, except as required by applicable laws, Ultra Easy Health Technology (Guangzhou) Co., Ltd., does not disclaim any expressed or implied warranties, including but not limit to warranties to marketability or fitness for a particular purpose, with respect to the contents of this manual.

To the extent permitted by applicable laws, Ultra Easy Health Technology (Guangzhou) Co., Ltd., shall in not event be liable for any special, incidental, indirect or consequential damages, nor for any loss of profit, data or anticipated savings, arising out of the use of the relevant contents of this manual, and the product described in this manual.

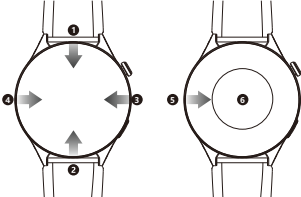
To the extent permitted by relevant laws, in any event, the maximum liability of Ultra Easy Health Technology (Guangzhou) Co., Ltd., for damages arising from using the product described in this manual (except for damages under applicable law in cases involving personal injury) is limited to the product price paid by you.

10

04 Using

Screen Operation

1. Enable shortcut menu.  
2. Enable message notifications.  
3. Switch functional card.  
4. Enter functional menu.  
5. Return to the last level.  
6. Select other watch face setting.



04

09 Warranty Service

Warranty Notice:  
1. In normal use, if there are product quality problems caused by manufacturing, materials, design, etc. one year free warranty for the motherboard and six months warranty for the battery and charger from the date of purchase.

No free warranty will be provided for failures caused by user's personal reasons, as follows:  
•Failures caused by unauthorized disassembly and modification of the watch.  
•Failures caused by dropping while use.

•All man-made damage or damage caused by third party's negligence or misuse (e.g. water in the body, external shocks, scratches on peripheral parts, etc.) is not covered by the warranty.

2. When requesting a free warranty, please provide warranty card with the date of purchase date and the seal of the purchase store.

3. When repairing the product, the user should take the product to our company or to our distribution site.

4. All functions of the product are based on the actual product.

11

05 Recharging

When the watch indicates that battery is low, please charge it promptly.

The watch is magnetic charging. Please match the charging pins of the charging cable to the watch's charging port until the watch screen shows the recharging reminder.

1. Please use the exclusive charging cable to charge. The charging way is unidirectional, so please pay attention to the charging direction, correct charging will absorb, while wrong direction will repel, please do not force charging.  
2. When charging, to ensure stable charging, the watch screen will be off and users can click the button to wake up the screen. When the watch power is too low, it will take 3 to 5 minutes to charge before waking up the watch, which is normal. Please wait for 5 minutes and then check the watch charging status.

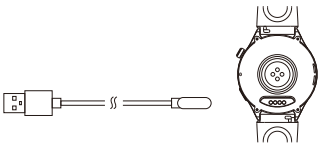
05

10 Basic Parameters

**Product name:** smartwatch  
**Product model:** Q30 Plus  
**Display screen size:** 1.43 Amoled  
**Resolution:** 466\*466  
**Battery capacity:** 280mAh  
**Standby time:** 5-15 days  
**Product weight:** about 52g  
**Working environment:** 0°C~45°C  
**Product size:** 52.5\*46\*11.3mm  
**Wristband material:** silicon  
**Master control chip:** single chip, dual mode  
**Bluetooth:** Bluetooth 5.2  
**Compatible system:** Android5.0+IOS9.0  
**Packing list:** device, charging cable and User Manual


12

- 3.Please connect charging socket to power adapter (5V/0.5A) or PC with USB cable.



06

11 Three-guarantee Service

Three-guarantee Service				
Customer Data				
Model		Sales Store		Customer Phone
Contact Phone		Sales Phone		Purchase Date
Customer Address				
Sales Address				
Abstract	Date			
Failure Phenomenon				
Inspection & Repair				
Remark				

13

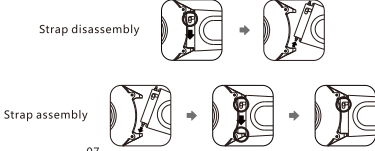
06 Strap adjustment and disassembly

Strap adjustment

Adjust the watch buckle according to your wrist to ensure the strap and watch cling to your wrist.

Strap disassembly and assembly

1. Pull the buckle of the strap and lift the strap to remove it.  
2. Insert one side of the strap into the lugs, pull the buckle of the strap, align the other side with the lugs and release the buckle, then the strap is fitted with a click.  
3. Pull and tug the strap to ensure it is well-installed.



07

12 Precautions

- Note:  
1. It is forbidden to use a power adapter with a charging voltage greater than 5V and a charging current greater than 2A. Charging hour is 2 to 3 hours.  
2. It is forbidden to charge in the presence of water damage.  
3. This device is not for medical use, the data and information provided are for reference only.  
4. Do not use this device in places where the use of wireless devices is expressly prohibited, as this may interfere with other electronic devices or cause other hazards.  
5. Do not place the device in direct sunlight, such as car dashboard or window ledge.  
6. Do not place the device near heat source or naked flames, such as induction cookers, microwave ovens, ovens, water heaters, fires, candles and other places where high temperature may be generated.  
7. Do not allow children or pets to swallow the device or its accessories, as this may cause injury to them or lead to device failure.  
8. This device is not a toy and children should use it under the supervision of an adult.  
9. This device is equipped with a non-removable built-in battery, please do not replace the battery by yourself.

14

07 Safety Information

Electronic device:

Please do not use this device in places where the use of wireless devices is expressly prohibited, as this may interfere with other electronic devices or cause other hazards.

Flammable and explosive area:

Do not use the device in any flammable or explosive areas such as petrol station (service station) or near flammable chemicals, and observe all graphic or written instructions. This device may cause explosion or fire in or around storage and transport areas of fuel and chemicals or explosive sites.

Operation Environment:

1. Do not use the device in humid or near magnetic places as it may cause the internal circuit malfunction of the device.  
2. Do not use the device during thunderstorm which may lead to device failure or electric shocks.  
3. Use this device within the temperature range of -20℃~45℃. When the ambient temperature is too high or too low, it may cause device to malfunction.

08

**FCC Caution:**

This device complies with part 15 of the FCC Rules. Operation is subject to the following two conditions: (1) This device may not cause harmful interference, and (2) this device must accept any interference received, including interference that may cause undesired operation.

Any Changes or modifications not expressly approved by the party responsible for compliance could void the user's authority to operate the equipment.

Note: This equipment has been tested and found to comply with the limits for a Class B digital device, pursuant to part 15 of the FCC Rules. These limits are designed to provide reasonable protection against harmful interference in a residential installation. This equipment generates uses and can radiate radio frequency energy and, if not installed and used in accordance with the instructions, may cause harmful interference to radio communications. However, there is no guarantee that interference will not occur in a particular installation. If this equipment does cause harmful interference to radio or television reception, which can be determined by turning the equipment off and on, the user is encouraged to try to correct the interference by one or more of the following measures:

15

**Product name:** smartwatch  
**Product model:** Q30 Plus  
**Wireless connection:** Bluetooth 5.2  
**Manufacturer:** Ultra Easy Health Technology (Guangzhou) Co., LTD  
**Office address:** 228 Huadi Avenue Middle, Liwan District, Guangzhou,China 51000

- Reorient or relocate the receiving antenna.  
-Increase the separation between the equipment and receiver.  
-Connect the equipment into an outlet on a circuit different from that to which the receiver is connected.  
-Consult the dealer or an experienced radio/TV technician for help.  
The device has been evaluated to meet general RF exposure requirement. The device can be used in portable exposure condition without restriction.