

# Manual

Product Name: Motorcycle Media Player

## 1 catalogs

1. Security information .....	5
2. Basic operations .....	6
2.1. Opening the system .....	6
2.2. Rebooting the system .....	6
2.3. Shutting down the system .....	6
2.4. Use of the touch screen .....	7
2.5 Description of multimedia button functions .....	7
3. Bluetooth.....	11
3.1 Pre-use instructions .....	11
3.1.1 What is wireless Bluetooth technology? .....	11
3.1.2 Safe Driving Precautions .....	11
3.1.3 Connecting a cell phone with Bluetooth warning .....	11
3.2 Pairing and connecting your phone's Bluetooth .....	12
3.3 Bluetooth control .....	12
4. WIFI .....	12
4.1 WiFi connection and disconnection .....	12
4.2 Functions after WIFI connection .....	13
5. Multimedia operations .....	13
5.1 USB Music .....	13

5.2 Bluetooth music .....	14
5.3 Online Music .....	14
6. Cell phone connectivity .....	15
6.1 Cellular Interconnection Connection Requirements .....	15
6.2 Cellular Connection Connection and Exit .....	15
6.2.1. first interconnection connection method: .....	15
6.2.2. Non-first-time interconnection (i.e. non-sensitive connection) connection method .....	16
6.2.3. Disconnection method: .....	16
6.3 Mobile phone interconnection casting mode .....	16
7. CarPlay .....	17
7.1 CarPlay connection methods .....	17
7.2. CarPlay connection and exit .....	18
7.2.1. First connection .....	18
7.2.2. Automatic reconnection .....	19
7.2.3. Sensorless connection .....	19
7.2.4. Non-first-time connections .....	20
7.2.5. Exit .....	20
7.3 CarPlay requirements for WIFI .....	20
7.4 CarPlay and Mobile Connectivity Competition .....	20

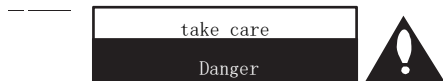
8.	Bluetooth phone .....	21
8.1	Bluetooth phone activation .....	21
8.2	Functions .....	21
9.	Basic Functions .....	21
9.1	Map Login .....	21
9.2	Initiating navigation .....	22
9.3	Introduction to Function Keys .....	22
9.3.1	Fn button .....	22
9.3.2*	Key .....	22
9.3.3	VR buttons .....	23
9.4	Quick Settings .....	23
10.	Notice.....	25
10.1	FCC Statement .....	215
10.2	Europe CE.....	26

## 1. Security information

This device complies with part 15 of the FCC Rules. Operation is subject to the following two conditions :

(1) This device may not cause harmful interference,

(2) this device must accept any interference received, including interference that may cause undesired operation.



Note: To avoid electric shock, please do not disassemble without authorization. If any internal parts are damaged, please contact a professional repairer.

Alert the user to the presence of uninsulated hazardous voltage within the product enclosure, which may be sufficient to pose a risk of electric shock to personnel.

The user is reminded of the existence of product-related operating and maintenance (service) instructions in this manual.

Always maneuver the vehicle in a safe manner. Do not get distracted while driving and always pay attention to the driving situation. Do not change settings or any other function options. First confirm the safety and legality of the operation, and then do the above. To ensure safety, some functions will be restricted while driving until the vehicle comes to a complete stop.

To minimize the risk of electric shock, do not remove the housing or back cover without authorization. There are no user-serviceable parts in the product. If it fails, please contact a professional for repair.

To minimize the risk of fire and electric shock, do not expose this product to high moisture or wet areas such as rain.

When driving, make sure that the sound volume inside the vehicle does not interfere with the fact that you can hear sounds from outside.

Hold and place lightly, no heavy objects can be stacked on this product.

Drivers should no longer look at the display while driving. If the driver looks at the display while driving, he or she may be distracted and cause a crash.

Warning.

- Do not use your cell phone while driving. You must park in a safe place when you need to use your cell phone.

Caution.

- Do not disassemble or modify this product. Because doing so may result in accidents, fire, and electric shock.

## 2. basic operation

### 2.1.Open the system.

Click the ignition button to change the power mode to ACC or ACC ON and the system will automatically power up. Once the system boots up, the display will show the power on "CFMOTO" logo screen.

### 2.2.reboot

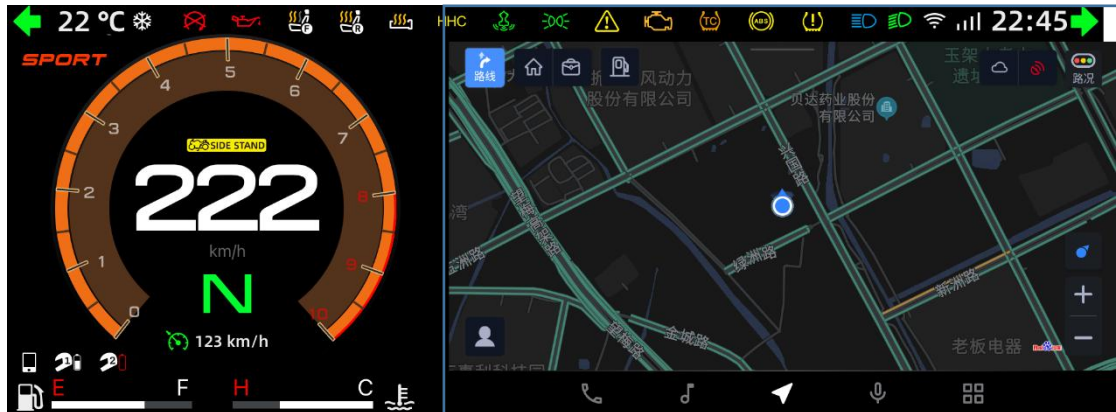
Long press the left + \* keys for 10S to reboot the system.

### 2.3.Shut down the system

Vehicle ACC OFF.

## 2.4. Use of the touch screen

Single Finger Tap: Tap any function in the Android area of the screen. Touch screen functions are not available in the gauge area.



Instrumentation area Android area

## 2.5. Multimedia buttons Functional description

serial number	name (of a thing)	functionality	take	short press	long press
1	first (of multiple parts)	Volume control/ switching full instrument windows	full instrumentation	Volume +	Cycle forward to switch full instrument small window information (1S one)
			split-screen mode	Volume +	Volume increases continuously (200MS by one frame)
2	arrive at (a decision, conclusion etc)	Volume control/ switching full instrument	full instrumentation	Volume-	Cycle backward to toggle full instrument small window information (1S one)
			split-screen mode	Volume-	Volume decreases continuously (200MS increases by one frame)

		wind ows			
3	queer	Answer the phone/  Changing the song and station/ Cycling the menu / Switching the instrument window	Calls/Incoming Calls	Hang up/reject/cancel dialed calls	Hang up/reject/cancel dialed calls
			talk back and forth	Hanging up before and after a call	Hanging up before and after a call
			When calling up the circular menu window	Adjust floating window menu items according to Fn settings	Adjust floating window menu items according to Fn settings
			Motion camera connection in progress	null	Issuing motion camera control commands
			multimedia playback	Previous song/previous radio station	Toggle full instrument small window forward in full instrument mode, otherwise invalid
			(sth. or sb) else	null	Toggle full instrument small window forward in full instrument mode, otherwise invalid
4	right (-hand)	Hanging up front and back calls/ Hanging up the phone/  Changing the song and channel/	Calls/Incoming Calls	answer the phone	answer the phone
			When calling up the circular menu window	Adjust floating window menu items according to Fn settings	Adjust floating window menu items according to Fn settings
			multimedia playback	Next song/next radio station	Toggle full instrument small window backward in full instrument mode, otherwise invalid
			(sth. or sb) else	null	Toggle full instrument small window backward in full instrument mode, otherwise invalid



		Cycling the menu / Switching the instrument window			
5	VR	Activate/end voice	Telephone / Front & Back	null	null
			network intercom	Activate/End VR Voice	rush for food
			non-network intercom	Activate/End VR Voice	Activate Siri/Connect to CarPlay
6	Fn	Calling up the cycle menu / negative screen	In call/incoming call	null	null
			talk back and forth	null	null
			full instrumentation	Call up the cycle menu Fn, no operation 3S automatically disappears	null
			split-screen mode	Call up the cycle menu Fn, no operation 4S automatically disappears	Call up the negative screen and pin/press again to exit the negative screen
7	*	Customized Keys	Arbitrary mode	Play/Pause (default)	Turn on/off full meter mode
			Arbitrary mode	Activate/deactivate pre- and post-calls (two helmets connected to the motorcycle)	/
8	Left ++	reopen	Arbitrary mode	null	Press and hold both buttons at the same time for 10S to restart MMI

9	Right +*	Total Mileage Zeroed	Arbitrary mode	null	Press and hold both buttons at the same time for 10S, ODO will be cleared (at the same time, average fuel consumption, average power consumption, average speed, duration and TRIP information will be reset).
---	----------	----------------------	----------------	------	--

- The keys are defined as follows:

Short press: the time  $t < 600\text{ms}$  between the user pressing and holding the key and lifting the hand to release it, a short press command is issued;

Long press: a long press command is issued directly if the user presses and holds the key for a time  $t \geq 600\text{ms}$  until the hand is lifted and released;

Combination of keys: time  $t \geq 10\text{s}$  between the user pressing and holding the key and lifting the hand to release it;

- Key Response Method:

1) Keys with only a short press function respond to a short case action when the key is raised, regardless of how long it takes;

2) Keys with only short press function respond to the long case action immediately when the long press time is reached, regardless of whether they are lifted or not;

3) During power-up, when the meter is activated and Android is not activated, none of the buttons to adjust the Android function are effective.

- Push-button exclusion processing:

Except for combination keys, two hard keys are pressed at the same time, and when key A is pressed and not released, key B is pressed and does not respond to B's action.

- Key jam handling:

Key long press more than 30S, no longer respond to the long security action, until the key is lifted and then the next key detection, all the way to the key jam does not affect the other keys work.

## 3. bluetooth

### 3.1 Pre-use instructions

#### 3.1.1 What is wireless Bluetooth technology?

- Wireless Bluetooth technology is based on short-range wireless network technology, using the frequency of 2402MHz ~ 2480MHz to allow different devices to connect in a short distance.
- It supports a variety of different electronic devices such as computer terminal, external devices, Bluetooth phones, PDAs, etc. In the driving environment, wireless Bluetooth technology enables high-speed transmission without the use of connecting cables.

#### 3.1.2 Safe Driving Precautions

- Prolonged screen viewing is dangerous and can lead to accidents. When driving a vehicle, do not watch the screen for long periods of time.

#### 3.1.3 Bluetooth warning for connecting to cell phones


- Before connecting to the main unit with your cell phone, check whether your cell phone has Bluetooth function.
- If you do not want your vehicle to automatically connect to your Bluetooth device, turn off the Bluetooth function in your Bluetooth device.
- Please stop the car while the phone is paired with the car.

- Some Bluetooth features may not work properly due to the hardware version of your phone. If these features work after a software update provided by your cell phone manufacturer, cancel all pairings and pair again before use.

## 3.2 Pairing and connecting your phone's Bluetooth

Before using the Bluetooth function, make sure that the Bluetooth function of your phone is turned on. Refer to your cell phone instruction manual.

## 3.3 Bluetooth Control

1. Go to "Settings"-"Bluetooth"-"Bluetooth Device Connection"-"Search for Devices"  
"Start searching for devices.
2. Radio host device name : GEELY RADIO.
3. Search for Bluetooth devices through your cell phone, enter the passkey to connect and match for the first time. Connect again without pairing and connect automatically.
4. After successful matching, the car display " " icon is highlighted.
5. Bluetooth connection can use the Bluetooth music function and Bluetooth phone function (must authorize MMI to obtain the address book de-authorization on the cell phone side)

## 4. WIFI

### 4.1 WiFi Connection and Disconnection

- 1) The car connects to the cell phone hotspot and only supports 5G hotspot.
- 2) Enter Settings-Connections-WI-FI and open it on the camera side, search for mobile hotspot (at this time, the hotspot on the cell phone side needs to be opened), select the WIFI that needs to be connected and connect it.

3) After successful connection, the icon " " will appear on the screen.

4) Connecting again will connect automatically. Ignoring the device on the phone or car terminal will not connect automatically.

5) When the distance between the car phone and cell phone is too far, or the car phone is powered down, or the cell phone is turned off, it will automatically disconnect. You can also manually disconnect at the car or cell phone end.

## 4.2 Functions after WIFI connection

1) The car gets network time through WIFI.

2) The car gets the temperature via WIFI.

3) The car gets network via WIFI and can use online music function.

4) The car gets network via WIFI and can use the map function.

## 5. multimedia operation

### 5.1 USB Music

1. When the USB device is connected, the music interface displays the USB music icon.

2. USB file requirements:

Support USB 1.1/2.0, support OTG

Folder directories in USB flash drive can be displayed according to the hierarchy (up to 7 levels); Only audio files are supported to be displayed in

USB Music;

Supported audio formats include: MP3, AAC, FLAC, WAV, MPEG-2/MPEG-4 (other audio formats are not required);

The maximum number of supported audio files is 5000 (the sum of the number of all folders and files);


Maximum size of audio files that can be supported is 4GB, those exceeding 4GB are not displayed as playback objects in the song list;

File name/folder name (including Path) length can be supported up to 255 bytes;

3、Pause Play: Pause the current track.

4, the user can select the next or previous track, short press 〈right button, left button〉 to realize; if it is already the last track, and then select the next track will play the first track; if it is already the first track, and then select the last track will jump to the last track to play; support playback location memory function;

## 5.2 Bluetooth music

After successful Bluetooth matching, the screen displays the Bluetooth connection icon  .

1. Bluetooth music cannot be played when Bluetooth is not connected.
2. The system supports automatic connection of Bluetooth devices that have already been connected;
3. The cell phone searches for Bluetooth to connect;
4. When the phone uses a third-party music player for music playback, the system also supports playback;
5. When in the state of ACC OFF, the Bluetooth connection is disconnected;
- 6, Bluetooth music support switch the previous song, the next song, pause playback.

## 5.3 Online music

1. Car phone integrated online music, cool my music.
2. Online music needs to be used when connected to the Internet: local TBOX network, or connected to a cell phone hotspot network.

3. You can open Cool My Music by voice control.
4. Support the binding and unbinding of Spring ID and Coolmusic ID, after successful binding, you can log in to Coolmusic directly through Spring ID; support the synchronization of data between the car terminal and the cell phone terminal, including account information, collection list, song list information, paid rights, member rights, and so on;

## 6. cell phone connection

### 6.1 Cellular Interconnect Connection Requirements

- 1) Mobile phone connects to MMI through a combination of BT+WIFI, Bluetooth version is 4.2, in order to avoid mutual interference with the Bluetooth band, WIFI only uses the 5GHz band;
- 2) Mobile phone interconnection supports mapping the content on the cell phone to the MMI host screen;

### 6.2 Cellular Connection Connection and Exit

Every time you interconnect to cast screen, you need to connect WIFI+Bluetooth, WIFI is used to cast screen and Bluetooth is used to transfer audio.

After successful wifi casting, if it recognizes that the Bluetooth of the cell phone and the car is not paired/connected, it will prompt the user to do Bluetooth pairing/connection first, if the Bluetooth connection is successful, the interconnected audio will be output from the car's speakers/Bluetooth headset, if the Bluetooth connection is skipped, the interconnected audio will be output from the cell phone side. (When Bluetooth is not connected, the interface prompts to skip Bluetooth connection, but will not automatically perform Bluetooth pairing)

The following requirements are for the operation of screen casting connection and disconnection for cell phone connectivity (distinguishing between Android and iOS).

#### 6.2.1. first interconnection connection method:

Android phone operation:

Turn on WIFI for both cell phone and car, connect the Bluetooth of cell phone to the car, open the driving companion of cell phone and car, click the button of "scanning code to connect" on the cell phone, and scan the QR code of Android on the screen of the car to interconnect.

iOS phone operation:

Cell phone connects to the hotspot of the car, the car connects to the Bluetooth of the cell phone, open the cell phone and the driving partner of the car, click on the "Scanning Code

Connection" button on the cell phone, and scan the QR code of Apple on the screen of the car to interconnect.

Explanation: When user scans Android QR code, Mobile Internet will send broadcast to the system to apply for "turn on car wifi", when user scans Apple QR code, Mobile Internet will send broadcast to the system to apply for "turn on car hotspot", the system needs to determine the current wifi mode and switch to the desired mode for the Mobile Internet after receiving the broadcast. When the system receives the broadcast, it needs to determine the current wifi mode and switch to the desired mode for the cell phone interconnection.

### **6.2.2. Non-first-time interconnection (i.e. non-sensitive connection) connection method**

Android phone operation:

The phone and the car at the same time open WIFI, the car connects to the phone Bluetooth, open the phone and the car driving partner, at this time the phone and the car will automatically interconnect the screen casting.

iOS phone operation:

The phone connects to the car hotspot, the car connects to the Bluetooth of the phone, open the driving partner of the cell phone and the car, at this time, the cell phone and the car will be automatically interconnected with the screen casting.

Description: Memorize the hotspot/wifi on/off status each time power is down to ensure sensorless connectivity for cellular interconnectivity (Requirement #543, wifi/hotspot switch)

### **6.2.3. Disconnection method:**

- (1) In the interconnection, click the "Disconnect" button in the Driving Companion App on the cell phone (after clicking the "Disconnect" button, the next time the interconnection is made, after the wifi and Bluetooth connection is successful, it is still necessary to click the "Reconnect" button on the cell phone). (After clicking "Disconnect", you need to click "Reconnect" button on the mobile phone after successful wifi and Bluetooth connection in the next interconnection;)
- 2) In the interconnection, exit the process of the Driving Companion App on the cell phone.

Special Instructions:

Sensorless connection: means that after the first connection, connecting again does not need to repeat the previous connection steps; instead of automatically opening the APP after connecting, the action of opening the APP needs to be performed manually by the user; For cell phone connectivity, as a third-party application it can't self-start, can't realize the forced pop-up window like Apple system, and can't realize the car terminal and cell phone terminal wake each other up.

## **6.3 Mobile phone interconnection screen casting mode**

Supports both app casting and phone mirroring.



The language of the cell phone connectivity application should be consistent with the MMI system settings, and the interface should follow the HMI specification of MMI.

#### 1, cast screen mode:

Display the mobile connectivity customization UI (i.e., in widget form) on the car's console. When casting mode, IOS doesn't support phone lock screen and split screen casting (the front of the phone must be a casting app), Android supports it;  
In casting mode, domestic customized apps: Gaode Navigation, QQ Music, Himalaya, Internet Radio, Local Music, and foreign customized apps: Mapbox;  
When casting mode, Android supports adding three-way apps, IOS does not;

#### 2. Mirror mode:

Cast your phone screen directly to the car end without UI adaptation.  
When mirroring mode, iOS does not support phone lock screen and call, Android does not support phone lock screen;  
Under the mirror mode, after the Android phone lock screen, the interface shows the lock screen prompt and home button, click the home button to return to the desktop of the car system.  
Under the mirror mode, after the iOS phone lock screen, the interface shows the lock screen prompt and the back button, click the back button to return to the previous page of the car system.

## 7. CarPlay

### 7.1 CarPlay connection method

1. Connection mode: wireless connection (Bluetooth connection + WIFI hotspot connection, the car works in hotspot mode, Bluetooth is responsible for establishing the connection, WIFI is responsible for data transmission)

The Apple device first pairs and establishes a connection with the car via Bluetooth, and then establishes a WiFi link via the IAP2 protocol. Once the Carplay session is established, the Bluetooth link is disconnected and the information interaction is transmitted via WiFi.

#### 2. Bluetooth, WiFi switch description

- ①When Carplay is not connected: Connect Carplay via Bluetooth, the car will automatically turn off WiFi and turn on the hotspot; after connecting successfully, Bluetooth will be disconnected automatically;
- ②When Carplay is connected: turning on Bluetooth will disconnect carplay, WiFi stays off;
- ③When Carplay is connected: turning on WiFi will disconnect Carplay and Bluetooth will turn on automatically.

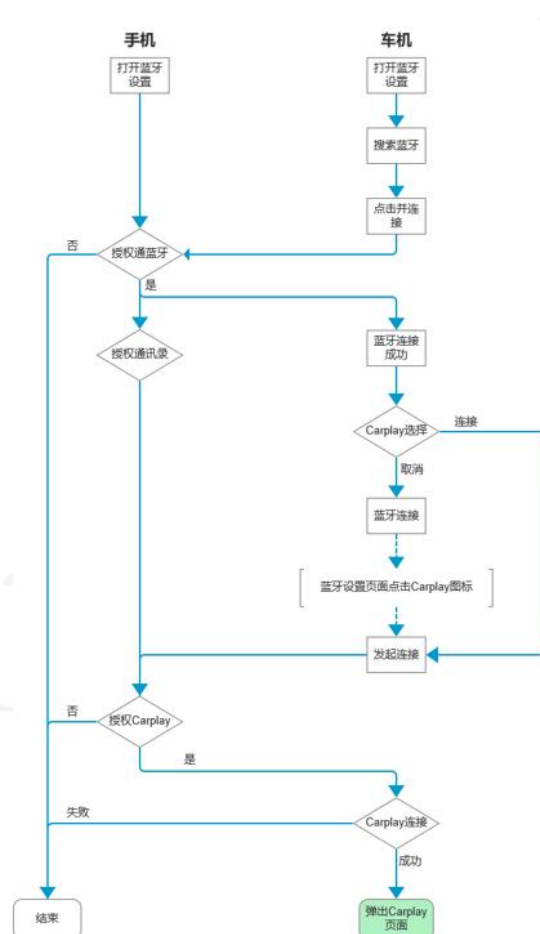
## 7.2. CarPlay connection and exit

### 7.2.1. First connection

1. Definition: First time connection refers to connecting an iPhone device that has not been connected before or an iPhone device that has been connected but deleted.

When a user outputs a memorized Bluetooth device, its corresponding CarPlay connection memory should be deleted at the same time. When that phone connects again, it is treated as a new device.

#### 2. First connection process



When connecting Bluetooth to an iPhone device for the first time, a pop-up window allows users to select "Use Bluetooth" or "Use Apple CarPlay", users select and remember the option; if users select "Use Bluetooth", when connecting to the device again, there is no pop-up window and only Bluetooth is connected; if users select "Use Apple CarPlay", they will enter CarPlay. If the user selects "Use Bluetooth", then when connecting to the device

again, there will be no more pop-up window and only Bluetooth will be connected; if the user selects "Use Apple CarPlay", then it will enter CarPlay.

3. Since CarPlay connection takes some time, during the CarPlay connection process, there should be a pop-up window to remind the user that the CarPlay connection is currently being established until the CarPlay connection is successful, and after the CarPlay connection is successful, it will be displayed in the foreground. If the connection fails, the user will be prompted that the connection has failed.

### 7.2.2. Automatic reconnection

1. Auto Reconnect applies to scenarios where the connection is passively disconnected, including carrying the phone away from and then close to it, disconnecting the Wi-Fi from the cellular side of the phone and then turning it back on, and only applies to iPhone devices that have been connected the most recent time.
2. Disconnection caused by operating the settings on the vehicle terminal is regarded as active disconnection, and the cancellation of authorization on the mobile terminal is regarded as active disconnection, neither of which triggers automatic reconnection.
3. Auto reconnect does not need user's confirmation, if CarPlay is displayed in the foreground at the time of disconnection, CarPlay should still be in the foreground after auto-connect; if CarPlay is in the background of the system at the time of disconnection, CarPlay should still be in the background after auto-connect, and at the same time, Toast prompts the user that "CarPlay has been connected". If CarPlay is in the background when disconnecting, CarPlay should still be in the background after auto-connecting, meanwhile Toast prompts the user "CarPlay is connected".

### 7.2.3. Sensorless connection

1. Sensorless Connection is a setting item and is turned on by factory default. If CarPlay is connected when the car is switched off, you need to judge whether to initiate CarPlay connection according to the state of the sensorless connection when the car is switched off and on again.
2. When the setting is off, the CarPlay connection is not automatically initiated when the power is turned on, and then only the Bluetooth connection is triggered without prompting.
3. When the setting item is On, CarPlay connection is automatically initiated once when the device is turned on, and no user confirmation is required for sensorless connection. Whether or not to display in the foreground after a successful connection follows the policy of **2.3 Auto-reconnection**.

#### 7.2.4. Non-first connection

1. For a new iPhone device, the first time you connect to the system actively ask whether to connect to the carplay, the user choose to decline, you can in the Bluetooth connection page to initiate the connection again.
2. The connection method is to click the CarPlay icon in the Bluetooth device list, and if the connection is successful, it will enter the CarPlay foreground page, if the connection fails, it will prompt the user that the connection has failed. If the connection fails, the user will be prompted to know that the CarPlay connection is currently being established.

#### 7.2.5.

(1) CarPlay can be disconnected in the following ways, at which time there is no prompt from the car:

- Turn off the engine.
- Keep your cell phone away.
- Turn off cellular Wi-fi
- Cancel CarPlay authorization on cell phone

(2) CarPlay can be disconnected in the following ways, at which time a pop-up window on the vehicle reminds the user that the operation will cause CarPlay to quit:

- Enable Bluetooth in the car
- Turn on the car Wi-fi

(3) CarPlay can be backed up to the background by clicking the "CFMOTO" icon on the CarPlay APP page, and then the system should display the App Center page.

#### 7.3 WIFI requirements for CarPlay

- 1) The frequency band is required to work in 2.4GHz or 5GHz, and it is recommended to work in 5GHz band;
- 2) 2.4 GHz band: Requires the on-board equipment (AP) to operate only on channels 1 (2.412 GHz), 6 (2.437 GHz) or 11 (2.462 GHz);
- 3) 5 GHz band: the on-board equipment (AP) is required to operate in channels 36 (5.180 GHz), 40 (5.200 GHz), 44 (5.220 GHz), 48 (5.240 GHz), 149 (5.745 GHz), 153 (5.765 GHz), 157 (5.785 GHz), or 161 (5.805 GHz );

#### 7.4 CarPlay and Mobile Connectivity Competition

Cellular Connectivity and Carplay Mutually Exclusive Description:

After the successful connection of cell phone interconnection, if users want to switch to Carplay casting, they can connect to Carplay through the Bluetooth page in the settings item;

After Carplay is successfully connected, users who want to switch to cell phone connected cast screen can directly open the cell phone connected application and scan the code to connect.

Phone Connect and CarPlay can't connect at the same time

## 8. Bluetooth phone

### 8.1 Bluetooth phone activation

When the Bluetooth connection between the cell phone and the car is successful, and the cell phone authorizes the car to get the access to the address book, you can make and receive calls on the car side.

### 8.2 Functions

1. Support answering, hanging up, rejecting, and dialing out calls in the car phone terminal.

The MMI can only end an active call on the handset side; a Hold call on the handset side cannot be ended. When the Hold call on the handset side is switched to Active, the system needs to display according to the status of the Active call on the handset side.

2. Display

1) Talk time: range is 00:00:00~99:59:59, after exceeding the maximum time, it will retime from 00:00:00;

2) Phonebook/Call Log button:

The call interface supports direct browsing of phonebook or call logs via on-screen buttons;

3) The other party's phone number (the other party's contact name is displayed if it has been synchronized in the phonebook)

Note: The call information displayed on a Bluetooth phone depends on the information transmitted from the cell phone side, so the information displayed during a call may vary for different cell phones.

## 9. Basic Functions

### 9.1 Map Login

I: Click on the avatar at the bottom left to enter the Map Center screen.

Two: Click Login and Register on the vehicle side. Choose to scan the QR code to login.

Third: Open the Baidu Maps App on your cell phone and click the camera button next to the search bar at the top. Scan the QR code on the camera side of the car and confirm.

At this point, the map page will synchronize your mobile shortcut address.

## 9.2 Initiate navigation

I. Go to the map page and click on the blue route icon at the top left.

Second, click on the search box and enter the destination. Select the exact destination address.

Third, choose the program you want.

IV. Click Start Navigation.

## 9.3 Introduction to Function Keys

### 9.3.1 Fn button

FN short press function:

I: Tap the App Center icon on the far right of the navigation bar

Second: Click on the Settings icon, enter Settings and select the System icon at the bottom of the left side.

Third: Select FN key setting and check the function you need. Short press the FN key to bring up the selected cycle menu.

IV: After the cycle menu is called up, you can switch between different states by left or right button

FN long press function

In split-screen mode, press and hold the FN key to call up the negative screen or exit the negative screen.

### 9.3.2\* Key

\* Key short press function:

I: Tap the App Center icon on the far right of the navigation bar

Second: Click on the Settings icon, enter Settings and select the System icon at the bottom of the left side.

Third: Select the customized key settings, check (pause/play function), when there is multimedia running in the background, short press the \* key to control the multimedia playback and pause

Check (Activate/End front/back call function) When there are two helmets connected to the vehicle, short press the \* key to activate the front/back call, click again to hang up the front/back call, short press the left key can also hang up the front/back call.

\* Key long press function:

Press and hold the \* key to turn on or off the full meter mode.

### 9.3.3 VR buttons

Use of the VR button requires that you are not talking back and forth or on the phone and that your headset is connected.

First function: short press the VR key to activate or end the voice.

MMI can be controlled by voice

Example: Navigation functions: navigate home, zoom in map, zoom out map, exit navigation

CALL: Call Spring Dynamics

Chit chat feature: How's the weather today?


Memorize the Night of the Spring River and the Moon

System Control: Open Settings

Open Multimedia

Second function: after completing carplay connection. Long press the VR button to activate siri.

## 9.4 Shortcut Settings

Negative Screen: Slide down in the Android interface to call out the negative screen; tap the upper left corner  to pin it, otherwise it will exit the negative screen when no operation.

Basic shortcut settings can be made on the negative screen, configured according to the model.

## 10. Notice

### 10.1 FCC Statement

#### **FCC Statement**

This device complies with part 15 of the FCC rules. Operation is subject to the following two conditions: (1) this device may not cause harmful interference, and (2) this device must accept any interference received, including interference that may cause undesired operation.

Changes or modifications not expressly approved by the party responsible for compliance could void the user's authority to operate the equipment.

NOTE: This equipment has been tested and found to comply with the limits for a Class B digital device, pursuant to part 15 of the FCC Rules. These limits are designed to provide reasonable protection against harmful interference in a residential installation.

This equipment generates uses and can radiate radio frequency energy and, if not installed and used in accordance with the instructions, may cause harmful interference to radio communications. However, there is no guarantee that interference will not occur in a particular installation. If this equipment does cause harmful interference to radio or television reception, which can be determined by turning the equipment off and on, the user is encouraged to try to correct the interference by one or more of the following measures:

- Reorient or relocate the receiving antenna.
- Increase the separation between the equipment and receiver.
- Connect the equipment into an outlet on a circuit different from that to which the receiver is connected.
- Consult the dealer or an experienced radio/TV technician for help

Important Note:

#### **Radiation Exposure Statement**

This equipment complies with FCC radiation exposure limits set forth for an uncontrolled environment. This equipment should be installed and operated with minimum distance 20cm between the radiator and your body.

This transmitter must not be co-located or operating in conjunction with any other antenna or transmitter.

Caution:



- (i) The device for operation in the band 5150–5250 MHz is only for indoor use to reduce the potential for harmful interference to co-channel mobile satellite systems;
  - (ii) For devices with detachable antenna(s), the maximum antenna gain permitted for devices in the bands 5250-5350 MHz and 5470-5725 MHz shall be such that the equipment still complies with the EIRP limit;
  - (iii) For devices with detachable antenna(s), the maximum antenna gain permitted for devices in the band 5725-5850 MHz shall be such that the equipment still complies with the EIRP limits specified for point-to-point and non-point-to-point operation as appropriate; and
- Operations in the 5.15-5.25GHz band are restricted to indoor usage only.

## 10.2 Europe CE

### Europe



#### EU Declaration of Conformity

BDStar Intelligent & Connected Vehicle Technology Co.,Ltd. hereby declares that this product [Motorcycle Media Players, the model name CFDLMMI001] is in compliance with the essential requirements and other relevant provisions of Directive 2014/53/EU. This product is allowed to be used in all EU member states. [www.bdstar.com](http://www.bdstar.com)

Under normal use of condition, this equipment should be kept a separation distance of at least 20cm between the antenna and the body of the user.

	BE	EL	LT	PT	BG	ES	LU	RO	CZ	FR
	HU	SI	DK	HR	MT	SK	DE	IT	NL	FI
	EE	CY	AT	SE	IE	LV	PL	UK		
Operations in the 5.15-5.35GHz band are restricted to indoor usage only.										

Function	Operation Frequency Range	Max Output Power
Module RG440		
Bluetooth Classic	2400 to 2483.5MHz	8±2dBm
Bluetooth BLE	2400 to 2483.5MHz	8±2 dBm
WLAN	5150 to 5725MHz	21±2 dBm
	5725 to 5875MHz	13±2 dBm
Module BE470		
Bluetooth Classic	2400 to 2483.5MHz	9±2dBm
Bluetooth BLE	2400 to 2483.5MHz	9±2 dBm
GNSS	GPS, GLONASS, Galileo 1559 to 1610MHz	/
FM	87.5 to 108MHz	/
AM	530kHz to 1710kHz	