

Repeater SRT-8200

User Manual

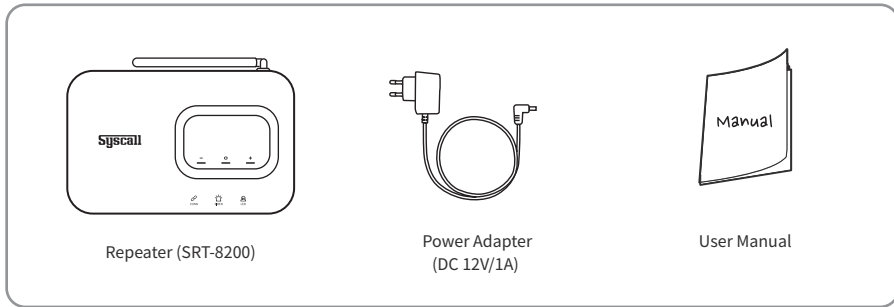
Please read the user manual carefully before start using the device.

Table of contents

1. Components & Specification	3
2. Product Overview	3
3. Call Bell Registration & Deletion	
3-1. [A1] 1 Button Bell Registration	5
3-2. [A2] 3 Button Bell Registration	6
3-3. [A3] Clear Bell Registration	6
3-4. [A4] Delete the Registered 1 Button Bell	6
3-5. [A5] Delete the Registered 3 Button Bell	7
3-6. [A6] Delete the Registered Clear Bell	7
3-7. [A7] Display Time Setting	7
3-8. [A8] Rolling Mode Setting	8
3-9. [AC] Ringtone ON/OFF Setting	8
4. Call Bell Repeater Setting	
4-1. [b1] Registration Type Setting	8
4-2. [b2] Bell Reception Mode ON/OFF	9
4-3. [b3] Repeater Time Setting	9
4-4. [b4] The number of Repeat Setting	9
4-5. [b5] Delay Time Setting	10
4-6. [b6] Protocol Version Setting	10
4-7. [b7] Repeater Number Setting	10
5. ST-5020 Repeater Setting	
5-1. [C1] Channel Number Setting	11
5-2. [C2] Group Number Setting	11
5-3. [C3] ST-5020 Reception Mode ON/OFF	11
5-4. [C4] ST-5020 Repeater Mode ON/OFF	12
5-5. [C5] Repeater Time Setting	12
5-6. [C6] The number of Repeat Setting	12
5-7. [C7] Delay Time Setting	13
6. DT-5020 Repeater Setting	
6-1. [d1] Channel Number Setting	13
6-2. [d2] DT-5020 Reception Mode ON/OFF	13
6-3. [d3] DT-5020 Repeater Mode ON/OFF	14
6-4. [d4] Repeater Time Setting	14
6-5. [d5] The number of Repeat Setting	14
6-6. [d6] Delay Time Setting	15
7. Guest Pager Repeater Setting	
7-1. [P1] Channel Number Setting	15
7-2. [P2] Group Number Setting	16
7-3. [P3] GP Reception Mode ON/OFF	16
7-4. [P4] GP Repeater Mode ON/OFF	16
7-5. [P5] Repeater Time Setting	17
7-6. [P6] The number of Repeat Setting	17
7-7. [P7] Delay Time Setting	17
8. Device Setting	
8-1. [E1] Firmware Version Information	18
8-2. [E2] Repeater Output Power Control	18
8-3. [E3] RF Output Check	18
8-4. [E4] Rebooting	19
8-5. [E5] Initialization	19

1. Components & Specification

Components



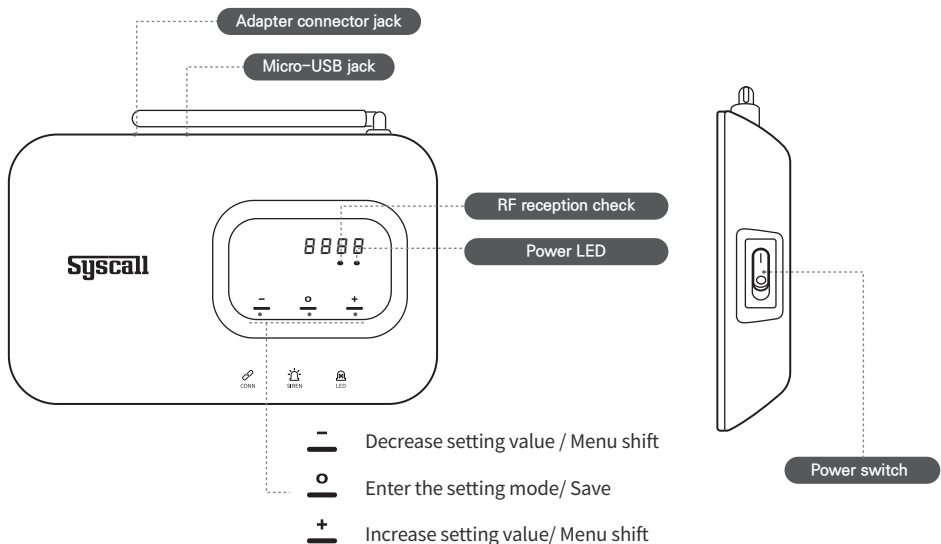
Specification

Frequency	FSK/433.42MHz
Power Source	DC 12V/1A
Dimension	W159 X L110 X H23mm
Weight	150g
Color	Black

Features

1. Enhance the signal coverage between the products
2. Easy to set up with touch switches
3. Available in registration or non-registration mode
4. Compatible with all Syscall products

2. Product Overview



Description of Functions

No.	Functions	Default	Range
<i>R1</i>	1 Button Bell Registration	-	Up to 4 digits
<i>R2</i>	3 Button Bell Registration	-	Up to 4 digits
<i>R3</i>	Clear Bell Registration	-	Up to 4 digits
<i>R4</i>	Delete the Registered 1 Button Bell	-	Up to 4 digits
<i>R5</i>	Delete the Registered 3 Button Bell	-	Up to 4 digits
<i>R6</i>	Delete the Registered Clear Bell	-	Up to 4 digits
<i>R7</i>	Display Time Setting	10	1~3600sec / 0000: Stay displayed
<i>R8</i>	Rolling Mode Setting	0	0(OFF), 1(Rolling mode)
<i>R9</i>	Ringtone ON/OFF Setting	0	0(OFF), 1(ON)
<i>b1</i>	Registration Type Setting	0	0(Non-registration mode), 1(Registration mode)
<i>b2</i>	Bell Reception Mode ON/OFF	1	0(OFF), 1(ON)
<i>b3</i>	Repeater Time Setting	1	1~60step (1step=0.5sec)
<i>b4</i>	The number of Repeat Setting	1	1~10
<i>b5</i>	Delay Time Setting	10	1~180sec
<i>b6</i>	Protocol Version Setting	2	2(For call button signal), 3(For ST/DT-5020 signal)
<i>b7</i>	Repeater Number Setting	0	0~120
<i>ℓ1</i>	Channel Number Setting	0	0~15
<i>ℓ2</i>	Group Number Setting	0	0~99
<i>ℓ3</i>	ST-5020 Reception Mode ON/OFF	0	0(OFF), 1(ON)
<i>ℓ4</i>	ST-5020 Repeater Mode ON/OFF	0	0(OFF), 1(ON)
<i>ℓ5</i>	Repeater Time Setting	1	1~60step (1step=0.5sec)
<i>ℓ6</i>	The number of Repeat Setting	1	1~10
<i>ℓ7</i>	Delay Time Setting	10	1~180sec
<i>d1</i>	Channel Number Setting	0	0~99
<i>d2</i>	DT-5020 Reception Mode ON/OFF	0	0(OFF), 1(ON)
<i>d3</i>	DT-5020 Repeater Mode ON/OFF	0	0(OFF), 1(ON)
<i>d4</i>	Repeater Time Setting	1	1~60step (1step=0.5sec)
<i>d5</i>	The number of Repeat Setting	1	1~10
<i>d6</i>	Delay Time Setting	10	1~180sec
<i>P1</i>	Channel Number Setting	0	0~99
<i>P2</i>	Group Number Setting	0	0~99
<i>P3</i>	GP Reception Mode ON/OFF	1	0(OFF), 1(ON)
<i>P4</i>	GP Repeater Mode ON/OFF	1	0(OFF), 1(ON)
<i>P5</i>	Repeater Time Setting	1	1~60step (1step=0.5sec)
<i>P6</i>	The number of Repeat Setting	1	1~10
<i>P7</i>	Delay Time Setting	10	1~180sec

No.		Default	Range
E1	Firmware Version Information	-	
E2	Repeater Output Power Control	2	1(Minimum), 2(Normal)
E3	RF Output Check	0	0(Carrier signal), 1(Modulating signal)
E4	Rebooting	-	
E5	Initialization	-	

3. Call Bell Registration & Deletion

⚠ Caution! As the default setting of the device is Non-registration mode*, it is not necessary to set up the following 3.1 [A1] to 3.6 [A6].

You can set it as Registration mode** in Registration Type Setting [b1].

(Please refer to page 8.)

***Non-registration mode** : Repeats all call bells' signal

****Registration mode** : Repeats only the signal of call bells which are registered from [A1] to [A3]

3-1. [A1] 1 Button Bell Registration

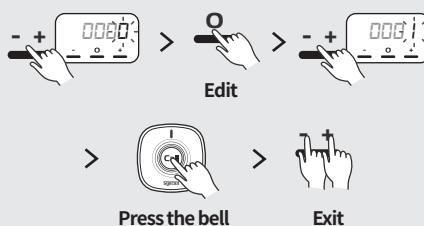
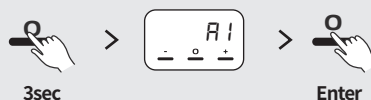
1. Touch and hold **O** for 3sec until "A1" is displayed.

2. Tap **O** to enter the setting mode.

3. Move to the next digit by tapping **-** or **+**, then tap **O** to enter the edit mode.

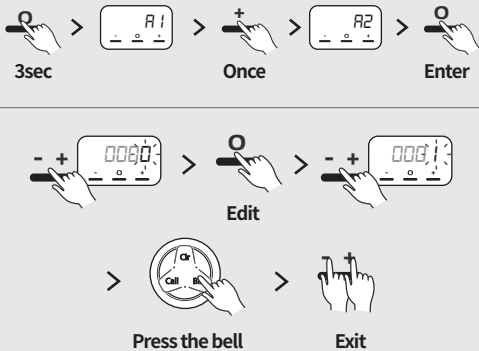
4. Set the call bell number by tapping **-** or **+**, and then press the bell.

5. Tap **-** & **+** together to exit from the setting mode.



3-2. [A2] 3 Button Bell Registration

1. Touch and hold **O** for 3sec until “A1” is displayed.
 2. Tap **+** once and then, Tap **O** to enter the setting mode.
 3. Move to the next digit by tapping **-** or **+**, then tap **O** to enter the edit mode.
 4. Set the call bell number by tapping **-** or **+**, and then press the bell.
- *Register only 1 button from 3 button bell, then the other buttons will be automatically registered.
5. Tap **-** & **+** together to exit from the setting mode.



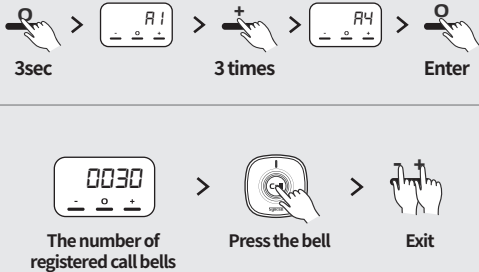
3-3. [A3] Clear Bell Registration

1. Touch and hold **O** for 3sec until “A1” is displayed.
2. Tap **+** twice and then, Tap **O** to enter the setting mode.
3. Move to the next digit by tapping **-** or **+**, then tap **O** to enter the edit mode.
4. Set the clear bell number by tapping **-** or **+**, and then press the bell.
5. Tap **-** & **+** together to exit from the setting mode.



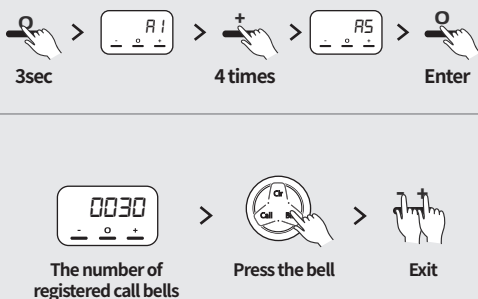
3-4. [A4] Delete the Registered 1 Button Bell

1. Touch and hold **O** for 3sec until “A1” is displayed.
2. Tap **+** 3-times and then, Tap **O** to enter the setting mode.
3. The number of registered call bells will be displayed on the screen.
4. Press the bell which you want to delete. If succeed, the number on the screen will be decreased.
5. Tap **-** & **+** together to exit from the setting mode.



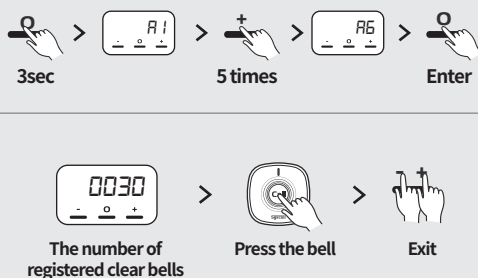
3-5. [A5] Delete the Registered 3 Button Bell

1. Touch and hold **O** for 3sec until "A1" is displayed.
2. Tap **+** 4-times and then, Tap **O** to enter the setting mode.
3. The number of registered call bells will be displayed on the screen. (ex. 0006=2pcs of 3 button bell)
4. Press the bell which you want to delete. If succeed, the number on the screen will be decreased.
*Press only 1 button from 3 button bell, then the other buttons will be automatically deleted as well.
5. Tap **-** & **+** together to exit from the setting mode.



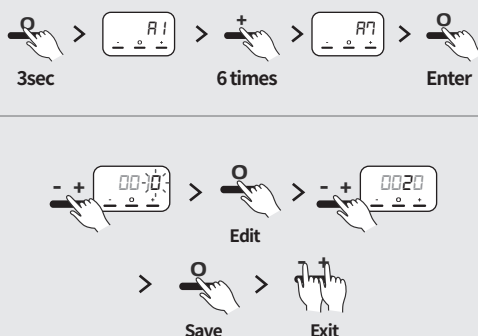
3-6. [A6] Delete the Registered Clear Bell

1. Touch and hold **O** for 3sec until "A1" is displayed.
2. Tap **+** 5-times and then, Tap **O** to enter the setting mode.
3. The number of registered clear bells will be displayed on the screen.
4. Press the bell which you want to delete. If succeed, the number on the screen will be decreased.
5. Tap **-** & **+** together to exit from the setting mode.



3-7. [A7] Display Time Setting

1. Touch and hold **O** for 3sec until "A1" is displayed.
2. Tap **+** 6-times and then, Tap **O** to enter the setting mode.
3. Move to the next digit by tapping **-** or **+**, then tap **O** to enter the edit mode.
4. Set the display time by tapping **-** or **+**.
*Range: 1~3600sec [Default: 10sec]
*0000: Stay displayed
5. Touch and hold **O** for 2sec to save.
6. Tap **-** & **+** together to exit from the setting mode.



3-8. [A8] Rolling Mode Setting

Rolling mode will show the received calls by circulation mode.

1. Touch and hold **O** for 3sec until “A1” is displayed.

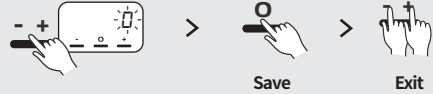
2. Tap **+** 7-times and then, Tap **O** to enter the setting mode.

3. Select ‘0’ or ‘1’ by tapping **-** or **+**.

*0: Function OFF / 1: Rolling mode [Default: 0]

4. Touch and hold **O** for 2sec to save.

5. Tap **-** & **+** together to exit from the setting mode.



3-9. [AC] Ringtone ON/OFF Setting

1. Touch and hold **O** for 3sec until “A1” is displayed.

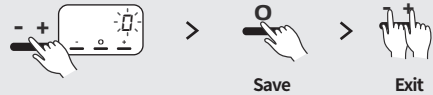
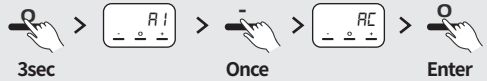
2. Tap **-** once and then, Tap **O** to enter the setting mode.

3. Select ‘0’ or ‘1’ by tapping **-** or **+**.

*0: OFF / 1: ON [Default: 0]

4. Touch and hold **O** for 2sec to save.

5. Tap **-** & **+** together to exit from the setting mode.



4. Call Bell Repeater Setting

4-1. [b1] Registration Type Setting

1. Touch and hold **O** for 5sec until “b1” is displayed.

2. Tap **O** to enter the setting mode.

3. Select ‘0’ or ‘1’ by tapping **-** or **+**.

*0: Non-registration mode / 1: Registration mode [Default: 0]

4. Touch and hold **O** for 2sec to save.

5. Tap **-** & **+** together to exit from the setting mode.



4-2. [b2] Bell Reception Mode ON/OFF

1. Touch and hold **O** for 5sec until “b1” is displayed.

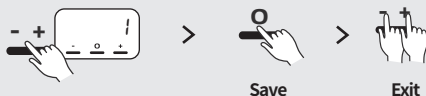
2. Tap **+** once and then, Tap **O** to enter the setting mode.

3. Select ‘0’ or ‘1’ by tapping **-** or **+**.

*0: OFF / 1: ON [Default: 1]

4. Touch and hold **O** for 2sec to save.

5. Tap **-** & **+** together to exit from the setting mode.



4-3. [b3] Repeater Time Setting

Set the repeater as whether repeats immediately or after some delays.

1. Touch and hold **O** for 5sec until “b1” is displayed.

2. Tap **+** twice and then, Tap **O** to enter the setting mode.

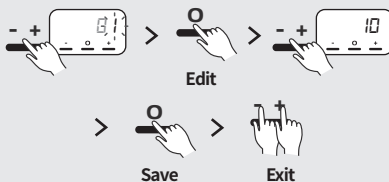
3. Move to the next digit by tapping **-** or **+**, then tap **O** to enter the edit mode.

4. Set the repeater delay time by tapping **-** or **+**.

* Range: 1~60step (1step=0.5sec) [Default: 1]

5. Touch and hold **O** for 2sec to save.

6. Tap **-** & **+** together to exit from the setting mode.



4-4. [b4] The number of Repeat Setting

Set the number of repeats.

1. Touch and hold **O** for 5sec until “b1” is displayed.

2. Tap **+** 3-times and then, Tap **O** to enter the setting mode.

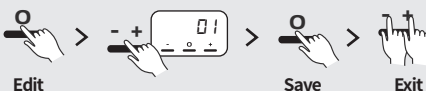
3. Tap **O** to enter the edit mode.

4. Set the number of repeats by tapping **-** or **+**.

* Range: 1~10 [Default: 1]

5. Touch and hold **O** for 2sec to save.

6. Tap **-** & **+** together to exit from the setting mode.



4-5. [b5] Delay Time Setting

Ignore the same bell signals during the delay time.

1. Touch and hold **O** for 5sec until “b1” is displayed.



2. Tap - 3-times and then, Tap **O** to enter the setting mode.

3 times

Enter

3. Move to the next digit by tapping - or +, then tap **O** to enter the edit mode.



4. Set the time by tapping - or +.

* Range: 1~180sec [Default: 10]

5. Touch and hold **O** for 2sec to save.



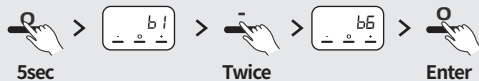
6. Tap - & + together to exit from the setting mode.

Exit

4-6. [b6] Protocol Version Setting

Set the version for SRT-8200_PC only, when connecting with the software.

1. Touch and hold **O** for 5sec until “b1” is displayed.



2. Tap - twice and then, Tap **O** to enter the setting mode.

Twice

Enter

3. Select '2' or '3' by tapping - or +.

* 2: For call button signal (ex. Monitoring SW)

3: For ST/DT-5020 signal (ex. Server paging SW)
[Default: 2]



Exit

4. Touch and hold **O** for 2sec to save.

5. Tap - & + together to exit from the setting mode.

4-7. [b7] Repeater Number Setting

Assign the number to repeater in order.

1. Touch and hold **O** for 5sec until “b1” is displayed.



2. Tap - once and then, Tap **O** to enter the setting mode.

Once

Enter

3. Move to the next digit by tapping - or +, then tap **O** to enter the edit mode.



4. Set the repeater number by tapping - or +.

* Range: 0~120 [Default: 0]

5. Touch and hold **O** for 2sec to save.



Exit

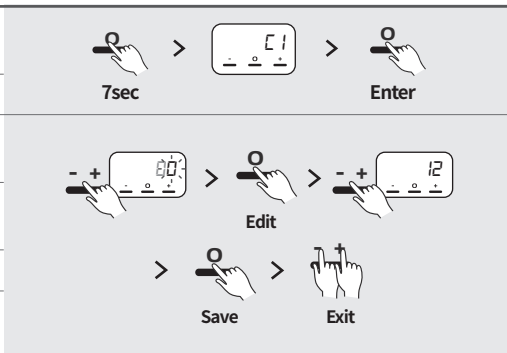
6. Tap - & + together to exit from the setting mode.

5. ST-5020 Repeater Setting

5-1. [C1] Channel Number Setting

Set the same Pn of both SRT-8200 and ST-5020.

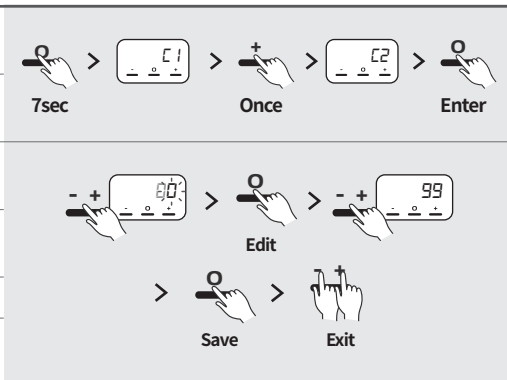
1. Touch and hold **O** for 7sec until "C1" is displayed.
2. Tap **O** to enter the setting mode.
3. Move to the next digit by tapping **-** or **+**, then tap **O** to enter the edit mode.
4. Set the channel number by tapping **-** or **+**.
* Range: 0~15 ('0'=Receive all Pn) [Default: 0]
5. Touch and hold **O** for 2sec to save.
6. Tap **-** & **+** together to exit from the setting mode.



5-2. [C2] Group Number Setting

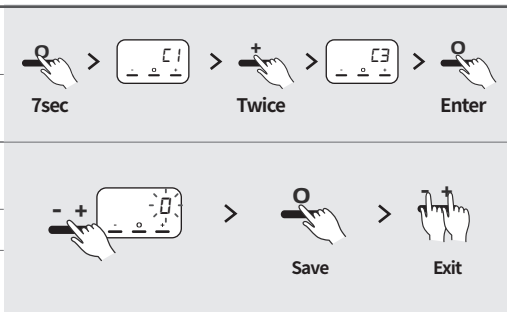
Set the same Gn of both SRT-8200 and ST-5020.

1. Touch and hold **O** for 7sec until "C1" is displayed.
2. Tap **+** once and then, Tap **O** to enter the setting mode.
3. Move to the next digit by tapping **-** or **+**, then tap **O** to enter the edit mode.
4. Set the group number by tapping **-** or **+**.
* Range: 0~99 ('0'=Receive all Gn) [Default: 0]
5. Touch and hold **O** for 2sec to save.
6. Tap **-** & **+** together to exit from the setting mode.



5-3. [C3] ST-5020 Reception Mode ON/OFF

1. Touch and hold **O** for 7sec until "C1" is displayed.
2. Tap **+** twice and then, Tap **O** to enter the setting mode.
3. Select '0' or '1' by tapping **-** or **+**.
*0: OFF / 1: ON [Default: 0]
4. Touch and hold **O** for 2sec to save.
5. Tap **-** & **+** together to exit from the setting mode.



5-4. [C4] ST-5020 Repeater Mode ON/OFF

1. Touch and hold **O** for 7sec until “C1” is displayed.



2. Tap + 3-times and then, Tap **O** to enter the setting mode.

3 times

Enter

3. Select '0' or '1' by tapping - or +.

* 0: OFF / 1: ON [Default: 0]

* If choose ON, ST-5020 Reception Mode [C3] should be ON as well.



4. Touch and hold **O** for 2sec to save.

5. Tap - & + together to exit from the setting mode.

5-5. [C5] Repeater Time Setting

Set the repeater as whether repeats immediately or after some delays.

1. Touch and hold **O** for 7sec until “C1” is displayed.



2. Tap - 3-times and then, Tap **O** to enter the setting mode.

3 times

Enter

3. Move to the next digit by tapping - or +, then tap **O** to enter the edit mode.



4. Set the repeater delay time by tapping - or +.

* Range: 1~60step (1step=0.5sec) [Default: 1]

5. Touch and hold **O** for 2sec to save.



6. Tap - & + together to exit from the setting mode.

5-6. [C6] The number of Repeat Setting

Set the number of repeats.

1. Touch and hold **O** for 7sec until “C1” is displayed.



2. Tap - twice and then, Tap **O** to enter the setting mode.

Twice

Enter

3. Tap **O** to enter the edit mode.

4. Set the number of repeats by tapping - or +.

* Range: 1~10 [Default: 1]



5. Touch and hold **O** for 2sec to save.

6. Tap - & + together to exit from the setting mode.

5-7. [C7] Delay Time Setting

Ignore the same ST-5020 signals during the delay time.

1. Touch and hold O for 7sec until “C1” is displayed.	
2. Tap - once and then, Tap O to enter the setting mode.	
3. Move to the next digit by tapping - or + , then tap O to enter the edit mode.	
4. Set the time by tapping - or + . * Range: 1~180sec [Default: 10]	
5. Touch and hold O for 2sec to save.	
6. Tap - & + together to exit from the setting mode.	

6. DT-5020 Repeater Setting

6-1. [d1] Channel Number Setting

Set the same Pn of both SRT-8200 and DT-5020.

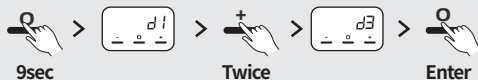
1. Touch and hold O for 9sec until “d1” is displayed.	
2. Tap O to enter the setting mode.	
3. Move to the next digit by tapping - or + , then tap O to enter the edit mode.	
4. Set the channel number by tapping - or + . * Range: 0~99 ('0'=Receive all Pn) [Default: 0]	
5. Touch and hold O for 2sec to save.	
6. Tap - & + together to exit from the setting mode.	

6-2. [d2] DT-5020 Reception Mode ON/OFF

1. Touch and hold O for 9sec until “d1” is displayed.	
2. Tap + once and then, Tap O to enter the setting mode.	
3. Select '0' or '1' by tapping - or + . *0: OFF / 1: ON [Default: 0]	
4. Touch and hold O for 2sec to save.	
5. Tap - & + together to exit from the setting mode.	

6-3. [d3] DT-5020 Repeater Mode ON/OFF

1. Touch and hold **O** for 9sec until “d1” is displayed.



2. Tap **+** twice and then, Tap **O** to enter the setting mode.

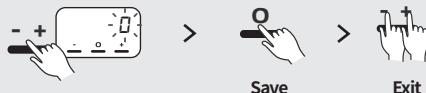
Twice

Enter

3. Select '0' or '1' by tapping **-** or **+**.

* 0: OFF / 1: ON [Default: 0]

* If choose ON, DT-5020 Reception Mode [d2] should be ON as well.



4. Touch and hold **O** for 2sec to save.

5. Tap **- & +** together to exit from the setting mode.

6-4. [d4] Repeater Time Setting

Set the repeater as whether repeats immediately or after some delays.

1. Touch and hold **O** for 9sec until “d1” is displayed.



2. Tap **+** 3-times and then, Tap **O** to enter the setting mode.

3 times

Enter

3. Move to the next digit by tapping **-** or **+**, then tap **O** to enter the edit mode.



4. Set the repeater delay time by tapping **-** or **+**.

* Range: 1~60step (1step=0.5sec), [Default: 1]

5. Touch and hold **O** for 2sec to save.

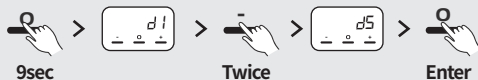


6. Tap **- & +** together to exit from the setting mode.

6-5. [d5] The number of Repeat Setting

Set the number of repeats.

1. Touch and hold **O** for 9sec until “d1” is displayed.



2. Tap **-** twice and then, Tap **O** to enter the setting mode.

Twice

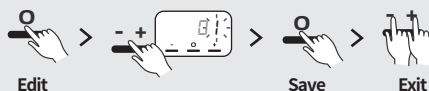
Enter

3. Tap **O** to enter the edit mode.

4. Set the number of repeats by tapping **-** or **+**.

* Range: 1~10 [Default: 1]

5. Touch and hold **O** for 2sec to save.



6. Tap **- & +** together to exit from the setting mode.

6-6. [d6] Delay Time Setting

Ignore the same DT-5020 signal during the delay time.

1. Touch and hold **O** for 9sec until “d1” is displayed.



2. Tap **-** once and then, Tap **O** to enter the setting mode.

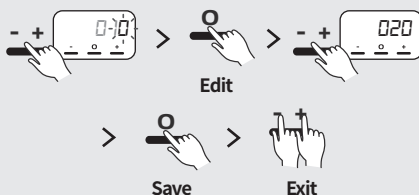
3. Move to the next digit by tapping **-** or **+**, then tap **O** to enter the edit mode.

4. Set the time by tapping **-** or **+**.

* Range: 1~180sec [Default: 10]

5. Touch and hold **O** for 2sec to save.

6. Tap **-** & **+** together to exit from the setting mode.



7. Guest Pager Repeater Setting

7-1. [P1] Channel Number Setting

Set the same Pn of both SRT-8200 and Guest pagers.

1. Touch and hold **O** for 12sec until “P1” is displayed.



2. Tap **O** to enter the setting mode.

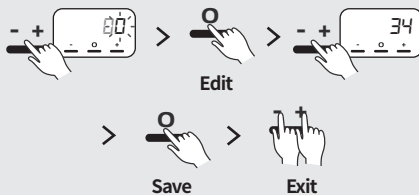
3. Move to the next digit by tapping **-** or **+**, then tap **O** to enter the edit mode.

4. Set the channel number by tapping **-** or **+**.

* Range: 0~99 ('0'=Receive all Pn) [Default: 0]

5. Touch and hold **O** for 2sec to save.

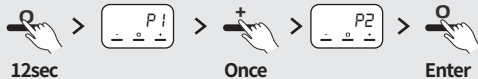
6. Tap **-** & **+** together to exit from the setting mode.



7-2. [P2] Group Number Setting

Set the same Gn of both SRT-8200 and Guest pagers.

1. Touch and hold **O** for 12sec until “P1” is displayed.



2. Tap **+** once and then, Tap **O** to enter the setting mode.

Once

Enter

3. Move to the next digit by tapping **-** or **+**, then tap **O** to enter the edit mode.



4. Set the group number by tapping **-** or **+**.

* Range: 0~99 ('0'=Receive all Gn) [Default: 0]

5. Touch and hold **O** for 2sec to save.

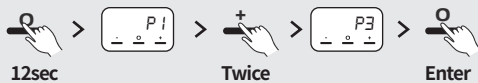


6. Tap **- & +** together to exit from the setting mode.

Exit

7-3. [P3] GP Reception Mode ON/OFF

1. Touch and hold **O** for 12sec until “P1” is displayed.



2. Tap **+** twice and then, Tap **O** to enter the setting mode.

Twice

Enter

3. Select '0' or '1' by tapping **-** or **+**.

*0: OFF / 1: ON [Default: 1]

4. Touch and hold **O** for 2sec to save.



Exit

5. Tap **- & +** together to exit from the setting mode.

7-4. [P4] GP Repeater Mode ON/OFF

1. Touch and hold **O** for 12sec until “P1” is displayed.



2. Tap **+** 3-times and then, Tap **O** to enter the setting mode.

3 times

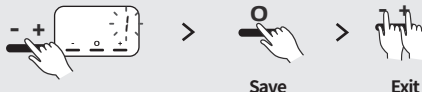
Enter

3. Select '0' or '1' by tapping **-** or **+**.

*0: OFF / 1: ON [Default: 1]

* If choose ON, GP Reception Mode [P3] should be ON as well.

4. Touch and hold **O** for 2sec to save.



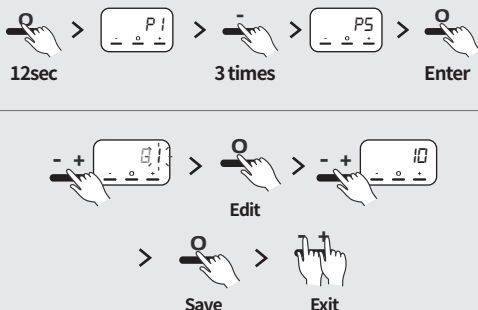
Exit

5. Tap **- & +** together to exit from the setting mode.

7-5. [P5] Repeater Time Setting

Set the repeater as whether repeats immediately or after some delays.

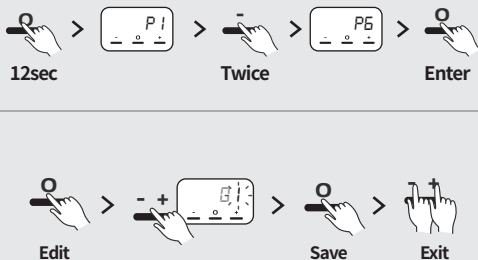
1. Touch and hold **O** for 12sec until “P1” is displayed.
2. Tap - 3-times and then, Tap **O** to enter the setting mode.
3. Move to the next digit by tapping - or +, then tap **O** to enter the edit mode.
4. Set the repeater delay time by tapping - or +.
* Range: 1~60step (1step=0.5sec) [Default: 1]
5. Touch and hold **O** for 2sec to save.
6. Tap - & + together to exit from the setting mode.



7-6. [P6] The number of Repeat Setting

Set the number of repeats.

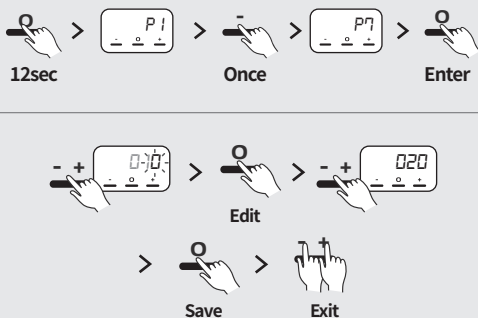
1. Touch and hold **O** for 12sec until “P1” is displayed.
2. Tap - twice and then, Tap **O** to enter the setting mode.
3. Tap **O** to enter the edit mode.
4. Set the number of repeats by tapping - or +.
* Range: 1~10 [Default: 1]
5. Touch and hold **O** for 2sec to save.
6. Tap - & + together to exit from the setting mode.



7-7. [P7] Delay Time Setting

Ignore the same Guest pager signals during the delay time.

1. Touch and hold **O** for 12sec until “P1” is displayed.
2. Tap - once and then, Tap **O** to enter the setting mode.
3. Move to the next digit by tapping - or +, then tap **O** to enter the edit mode.
4. Set the time by tapping - or +.
* Range: 1~180sec [Default: 10]
5. Touch and hold **O** for 2sec to save.
6. Tap - & + together to exit from the setting mode.



8. Device Setting

8-1. [E1] Firmware Version Information

Able to check the firmware version information of the repeater.

1. Touch and hold **O** for 14sec until "E1" is displayed.



2. Tap **O** to confirm the Firmware Version Information.

Enter

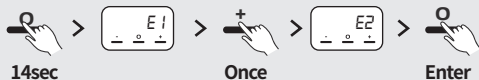
3. Tap **-** & **+** together to exit from the setting mode.



8-2. [E2] Repeater Output Power Control

Able to set the RF output power of the repeater.

1. Touch and hold **O** for 14sec until "E1" is displayed.



2. Tap **+** once and then, Tap **O** to enter the setting mode.

Once

Enter

3. Set the output of the repeater by tapping **-** or **+**.

*1: Minimum, 2: Normal [Default: 2]



4. Touch and hold **O** for 2sec to save.

5. Tap **-** & **+** together to exit from the setting mode.

8-3. [E3] RF Output Check

1. Touch and hold **O** for 14sec until "E1" is displayed.



2. Tap **+** twice and then, Tap **O** to enter the setting mode.

Twice

Enter

3. Select '0' or '1' by tapping **-** or **+**.

*0: Carrier signal, 1: Modulating signal [Default: 0]

4. Tap **O** to confirm the RF output



5. Tap **-** & **+** together to exit from the setting mode.

8-4. [E4] Rebooting

1. Touch and hold **O** for 14sec until “E1” is displayed.



2. Tap **+** 3-times and then, Tap **O** to enter the setting mode.



3. Tap **O** once again for 2sec and release the button.



4. It will be rebooted after displaying the firmware version.

8-5. [E5] Initialization

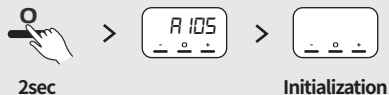
1. Touch and hold **O** for 14sec until “E1” is displayed.



2. Tap **+** 4-times and then, Tap **O** to enter the setting mode.



3. Tap **O** once again for 2sec and release the button.



4. It will be rebooted after initialization.

FCC Information

This device complies with part 15 of the FCC Results.
Operation is subject to the following two conditions :

- (1) This Device may not cause harmful interface, and
- (2) This device must accept any interference received, including interference that may cause undesired operation.

Note: This equipment has been tested and found to comply with the limits for CLASS B digital device, pursuant to Part 15 of FCC Rules. These limits are designed to provide reasonable protection against harmful interference when the equipment is operated in a commercial environment. This equipment generates, uses and can radiate radio frequency energy and, if not installed and used in accordance with the instructions, may cause harmful interference to radio communications. However, there is no guarantee that interference will not occur in a particular installation. If this equipment does cause harmful interference to radio or television reception, which can be determined by turning the equipment off and on, the user is encouraged to try correct the interference by one or more of the following measures:

- 1.1. Reorient or relocate the receiving antenna.
- 1.2. Increase the separation between the equipment and receiver.
- 1.3. Connect the equipment into an outlet on a circuit different from that to which receiver is connected.
- 1.4. Consult the dealer or experienced radio/TV technician for help.

WARNING

Changes or modifications not expressly approved by the manufacturer could void the user's authority to operate the equipment.

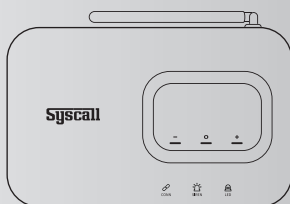
CAUTION : Exposure to Radio Frequency Radiation.

Antenna shall be mounted in such a manner to minimize the potential for human contact during normal operation. The antenna should not be contacted during operation to avoid the possibility of exceeding the FCC radio frequency exposure limit.

IMPORTANT NOTE:

FCC RF Radiation Exposure Statement:

This equipment complies with FCC RF radiation exposure limits set forth for an uncontrolled environment. This equipment should be installed and operated with a minimum distance of 20 centimeters between the radiator and your body. This transmitter must not be co-located or operating in conjunction with any other antenna or transmitter.



Syscall

- NTTWORKS Bldg, 5-10, Tongil-ro 89-gil, Eunpyeong-Gu, Seoul, Korea
- TEL: +82-2-352-8677 FAX: +82-2-352-8672
- WEB: www.syscallglobal.com E-mail: sales@syscallglobal.com