

# **Peacall Dash Cam**



## **User Manual**

**(Peacall-ZD01)**

**Service Email: [hongjitai2019@outlook.com](mailto:hongjitai2019@outlook.com)**

**Preface**

Thank you for purchasing this dashcam. We hope it may bring a better and more colorful life to you.

This user manual will detail how to use and operate, precautions, technical specifications, and so on. Please read this manual carefully before use and fully understand it. Please keep this manual in good condition. We hope this product can meet your requirements and serve you for a long time!

This product complies with the certification indicators of FCC&CE and other authoritative organizations to ensure customers' safety.

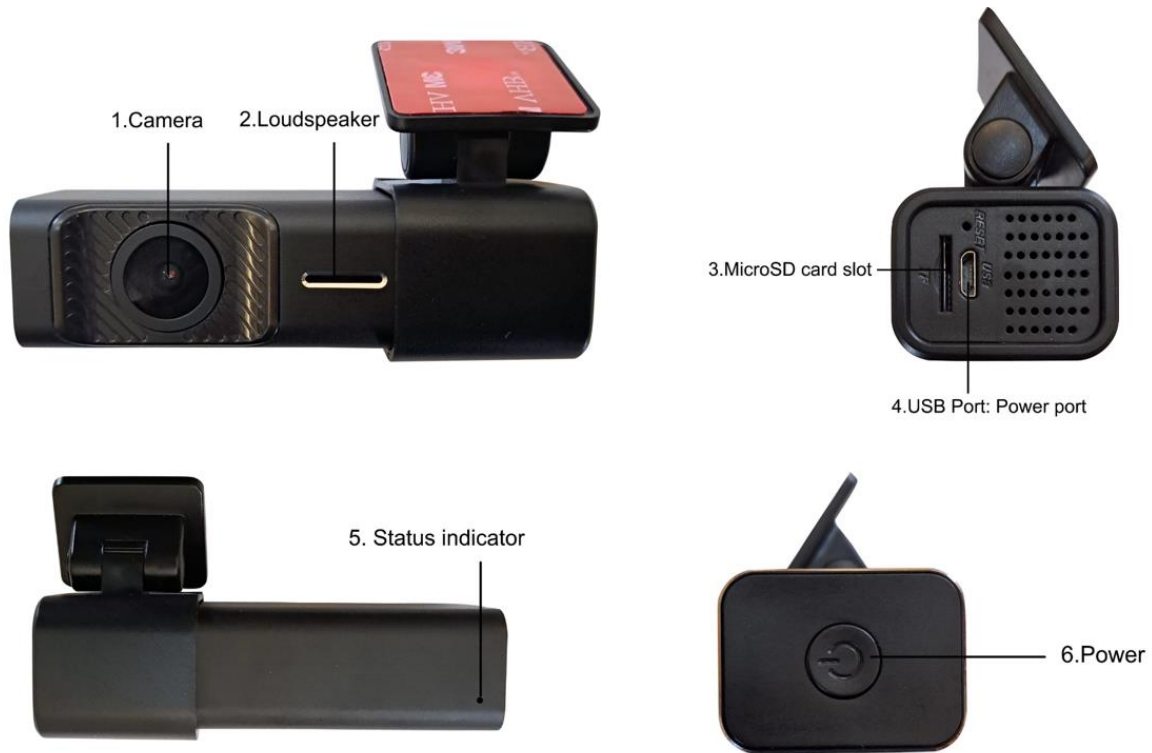
**Warm tips:**

- 1. When switching on the power supply, the dash cam automatically powers on and starts recording; when powered off, it will immediately shut down.**
- 2. The first time using this dashcam, we recommend you format the memory card through the machine.**

# Contents

Preface .....	1
Contents .....	3
One. Appearance and fundamental function .....	4
Two. App Download and Installation .....	5
Three. Install instruction .....	7
Four. APP basic function .....	12
Five. Parameters .....	14
Six. FAQ .....	15

# One. Appearance and fundamental function



- 1. Camera:** Recording Video.
- 2. Loudspeaker:** Play Audio.
- 3. MicroSD card slot:** Default a 64G microSD card exists.
- 4. USB Port:** Power port.
- 5. Status indicator:** None / Red / Green (blinking when recording).
- 6. Power:** Restore the factory settings.

## Two. App Download and Installation

### 1. RoadCam APP download



Android and iPhone phones can scan the QR code above to directly download and install the 'RoadCam' APP or download 'RoadCam' from iOS App Store or Google Play Store.

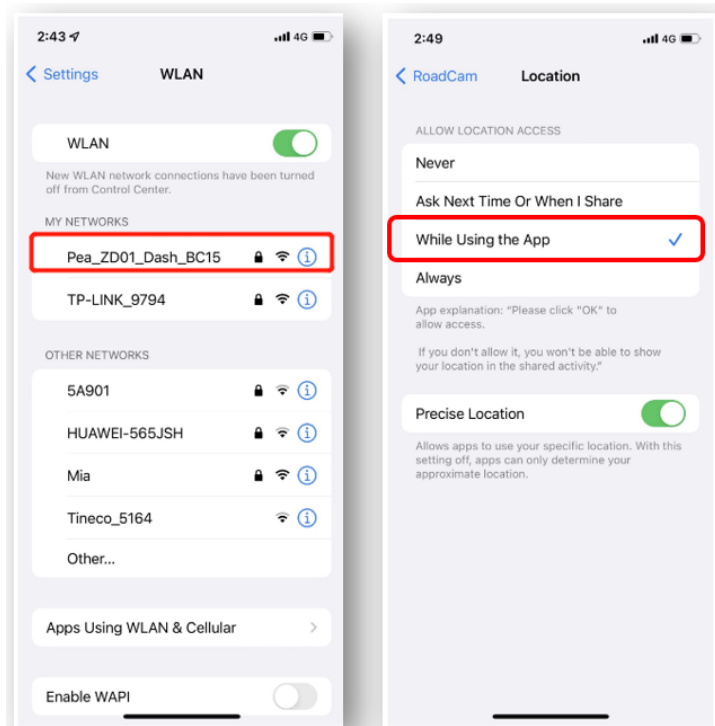
### 2. WiFi connecting

(1). Power on the dash cam, and open the settings on your mobile phone to connect the WIFI.

Default WiFi Name: **Pea-ZD01-XXXX**(generated the last four bits randomly)

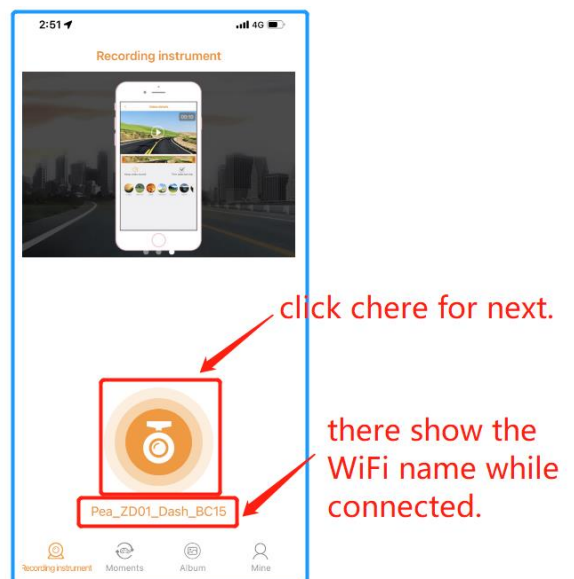
Default Password: **12345678**

**Note: You must open the APP's location and the permission to access the image.**



(iPhone iOS example)

(2)Then open RoadCam APP to connect the dash cam.

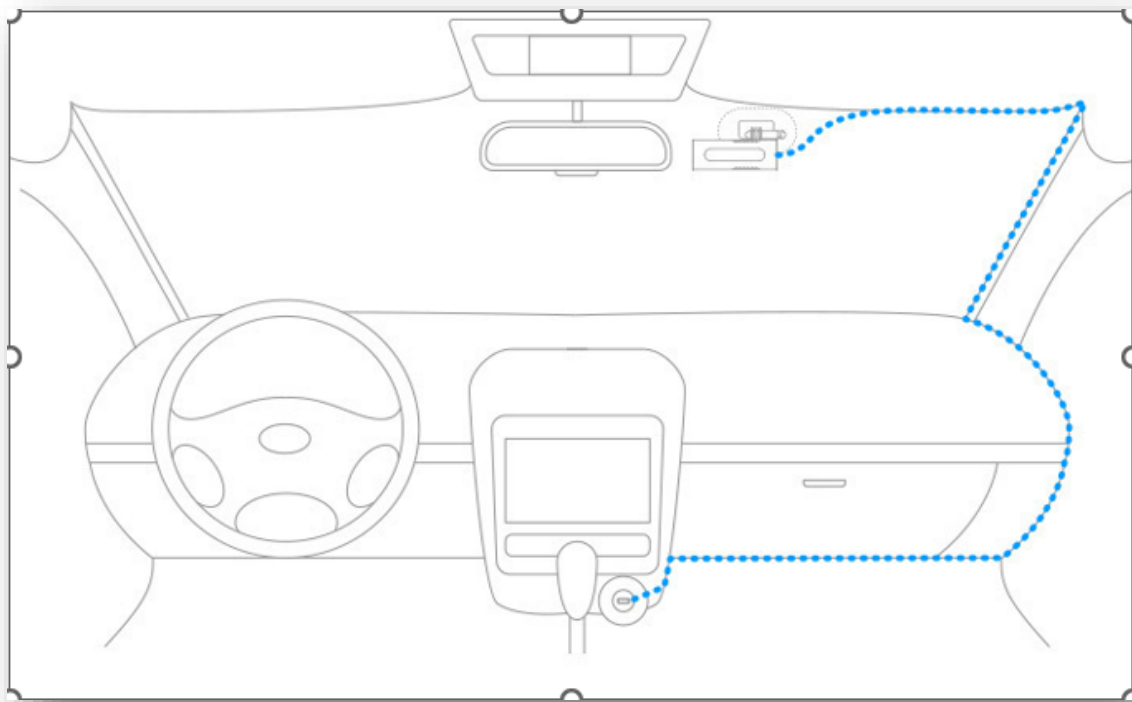


(iPhone iOS example)

**Notices:** When the Android system mobile phone is connected to the dashcam's WiFi, it will not be able to use network data. The link must be disconnected manually if you need to use the mobile phone's network data.  
**Don't set Android system phones to connect to the WiFi automatically.**

### Three. Install instruction

The installation is simple, as shown in the figure below:



1. **Paste electrostatic sticker:** Wipe the glass and then paste the electrostatic sticker;

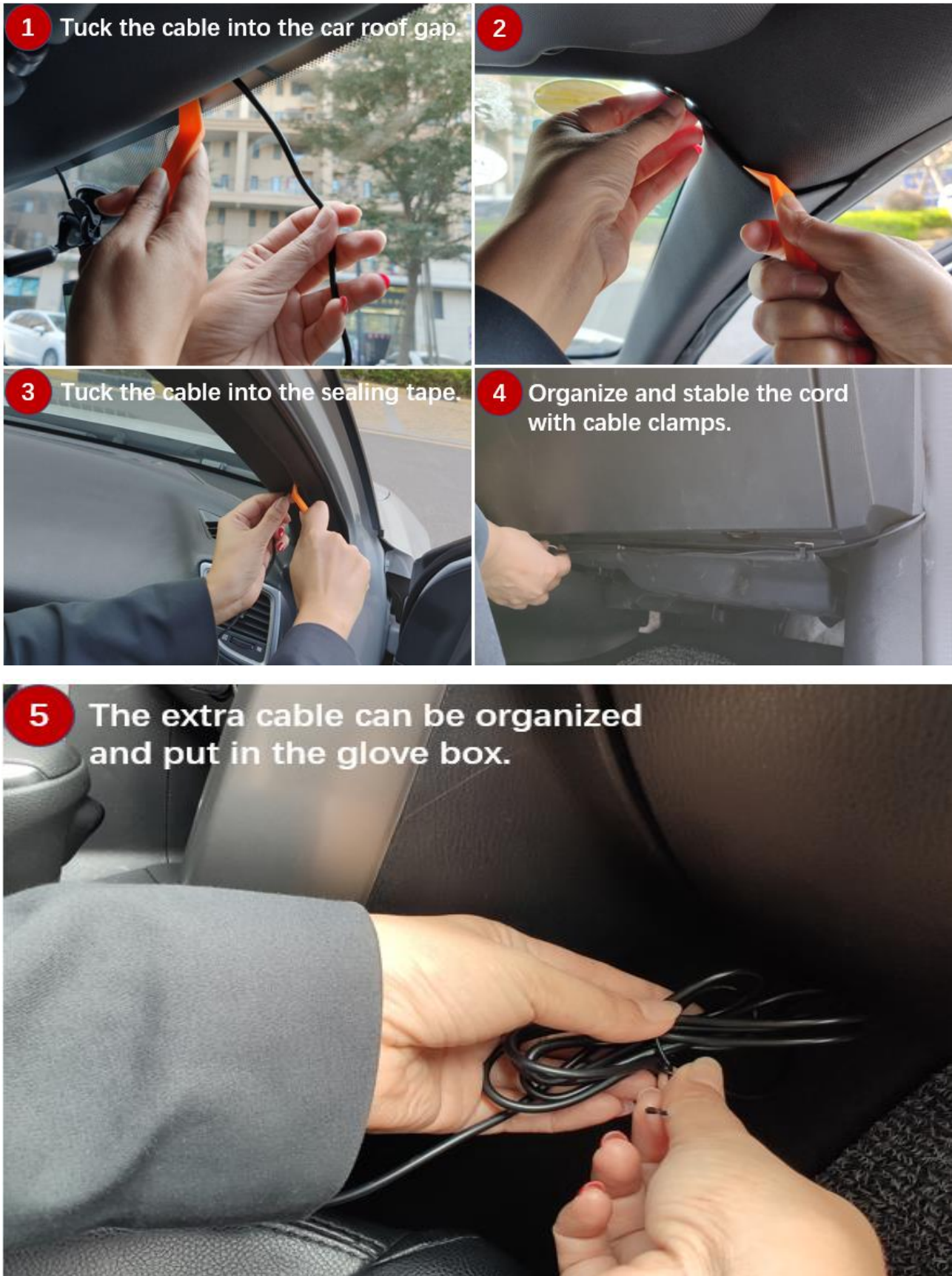




**2. Paste the machine:** First, please connect the machine to the power supply, use the APP to view the video, and ensure that the machine is in the correct direction. Then tear off the lens protective film and 3M adhesive protective sticker, and paste the machine on the electrostatic sticker. Don't let the electrostatic sticker block the lens;



**3. Complete the wiring:** The crowbar can assist with the wiring, and the wiring diagram is shown below;



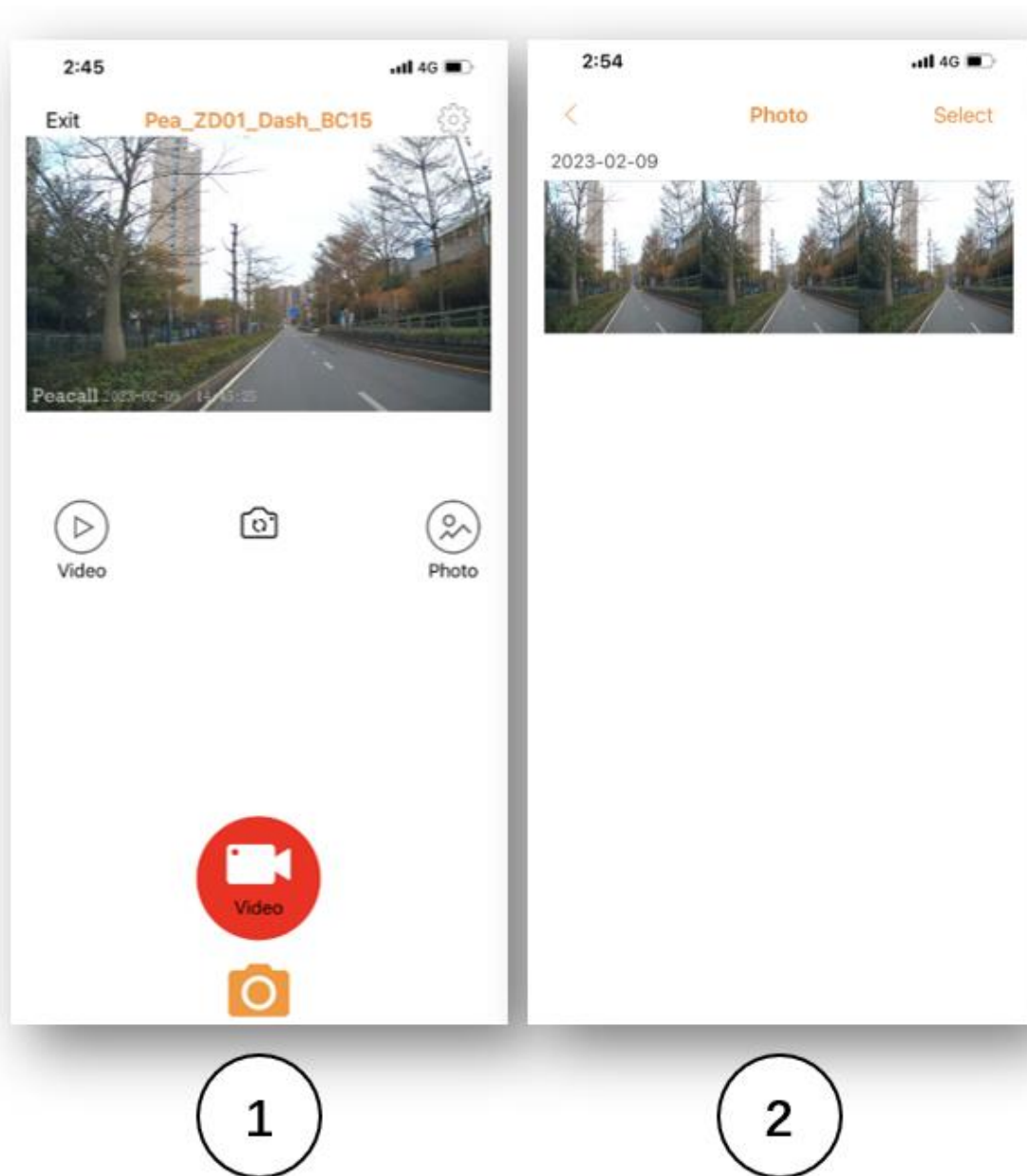


- 4. Adjust the machine angle to complete the installation:** Preview the video through APP. After adjusting the video angle, the entire installation is finished.



## Four. APP basic function

1. **Real-time preview:** Check the recorded video in the dashcam by connecting to the WiFi. You can switch different cameras(optional);
2. **Photo:** Check and download the images;
3. **Video files:** Check and download the video files;
4. **Setting:** Set up the dashcam from the RoadCam WIFI APP.





3



4

## Five. Parameters

<b>DSP</b>	GK7202
<b>Video resolution</b>	1080P/30FPS
<b>Sensor</b>	GC3238/155 degrees
<b>WIFI</b>	Support
<b>GPS</b>	None
<b>compressed format</b>	H.264
<b>Exposure</b>	+2.0, +1.7, +1.0, +0.7, +0.3, 0, -0.3, -0.7, -1.0, -1.7, -2.0
<b>Screen</b>	No screen
<b>Recording mode</b>	Recording; loop recording
<b>Picture format</b>	JPEG
<b>Video format</b>	Mp4
<b>Memory card</b>	MicroSD(Class 10,U1 above), MAX up to 128G
<b>Power</b>	ACC
<b>Mic</b>	Built-in
<b>Loudspeaker</b>	Built-in
<b>Language</b>	English
<b>OS</b>	Windows XP/7/8/10 SP3/Vista and Mac 10.5 or above
<b>Work Temperature</b>	-20℃ ~ +70℃
<b>Storage Temperature</b>	-40℃ ~ +80℃
<b>ROM</b>	1GB

## Six. FAQ

Under normal operating conditions, if the dash cam goes wrong, please refer to the following solutions:

- **Record video is abnormal**

Check the MicroSD card to see whether there is enough space. You can format the MicroSD card.

- **When recording the video, the dashcam automatically stops.**

Due to the massive UHD video data, please use a high-speed MicroSD card (above C10 level) that matches SDHC.

- **The image is hazy**

Check whether the lens has dirt/ fingerprint; before taking a recording, please clean the lens.

- **The image is very dark when recording the sky and water surface.**

It will affect the automatic exposure function in the big contrast scene.

- **Downtimes**

**When there is downtime, Please power down and reconnect the power. If the problem still exists, you can long press the power button on the side of the machine for 10 seconds to restore the factory settings.**

## FCC Note

This device complies with part 15 of the FCC Rules. Operation is subject to the following two conditions: (1) this device may not cause harmful interference, and (2) this device must accept any interference received, including interference that may cause undesired operation. Any changes or modifications not expressly approved by the party responsible for compliance could void the user's authority to operate the equipment.

NOTE: This equipment has been tested and found to comply with the limits for a Class B digital device, pursuant to Part 15 of the FCC Rules. These limits are designed to provide reasonable protection against harmful interference in a residential installation. This equipment generates, uses and can radiate radio frequency energy and, if not installed and used in accordance with the instructions, may cause harmful interference to radio communications. However, there is no guarantee that interference will not occur in a particular installation.

If this equipment does cause harmful interference to radio or television reception, which can be determined by turning the equipment off and on, the user is encouraged to try to correct the interference by one or more of the following measures:

- Reorient or relocate the receiving antenna.
- Increase the separation between the equipment and receiver.
- Connect the equipment into an outlet on a circuit different from that to which the receiver is connected.
- Consult the dealer or an experienced radio/TV technician for help.

To maintain compliance with FCC's RF Exposure guidelines, This equipment should be installed and operated with minimum 20cm distance between the radiator and your



body: Use only the supplied antenna.