

Shenzhen Yishengbang Technology Co.,
Ltd.

SPECIFICATION FOR APPROVAL

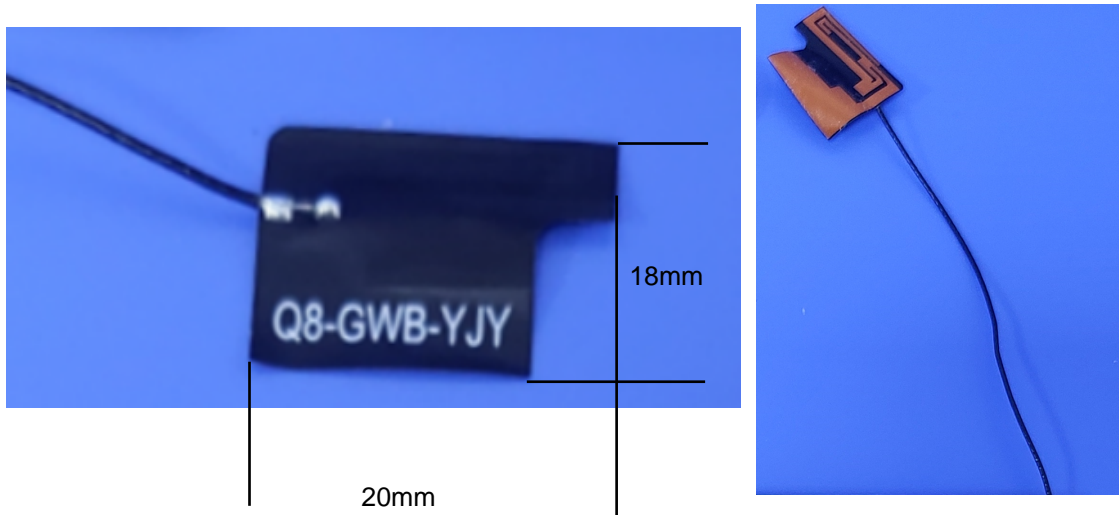
Male Division Name (customer to fill in): Shenzhen Puner Electronics Co., Ltd.
things Material Generation Code: (to be completed by customer):
Gauge Lattice Type No. (to be filled in by customer) K07
Commitment Recognize Day (to be completed by the customer):
ent Should Business (SLK to be filled in):
For name Shenzhen yishengbang technology co., ltd
For Should business type GPS + WIFI:SLK-PNE-5019A-L-97-B No. (SLK to be filled in):

Commitment			Signature		
Recognize					
For Should Merchant Commitment Recognize					
Engineer	Audit	Approved	Engineer	Audit	Approved
Fan Hsinchu	Huang Zhong	Min Jicai			
Seal and Sign			Seal and Sign		
Day	Period	2023-12-20	Date		
Instructions: <input type="checkbox"/> Accepted <input type="checkbox"/> Conditional Acceptance					
(Customer) Remarks:					

Supplier Name: Shenzhen Yishengbang Technology Co., Ltd.
Supplier's address: 101, Building C, Qianwan Hard Technology Industrial Park, Nanchang Community, xixiang street, Bao'an District, Shenzhen Tel: 18666299104 Fax: 0769-82553116

GPS+WIFI

1. Explanation of Product number :



Product Code:

- (1) Customer:
- (2) Antenna Name:WIFI (WIFI Antenna)
- (3) Connector:1.13 97mm

2. Features

- *Stable and reliable in performances
- *Compact size
- *RoHS compliance

3. Applications

- * IEEE802.11 (b/g/n)
- * Hand-held devices when WIFI (802.11b/g/n) GPS functions are needed

4. Description

Holy bond's FPC antenna series are specially designed for WIFI (802.11b/g/n) GPS applications. Based on Holy bond's proprietary design and processes, this FPC antenna has excellent stability and sensitivity to consistently provide high signal reception efficiency

5. Electrical Specifications

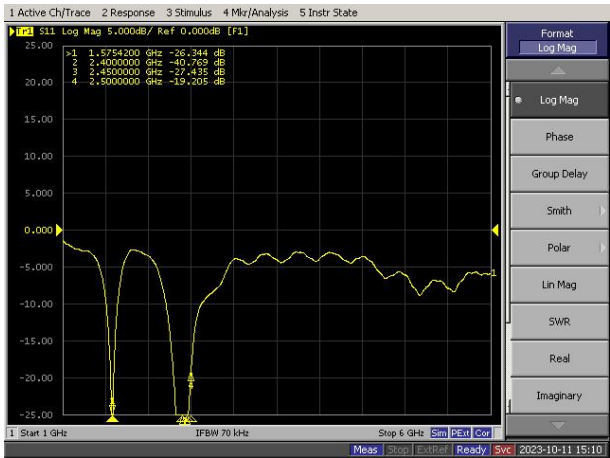
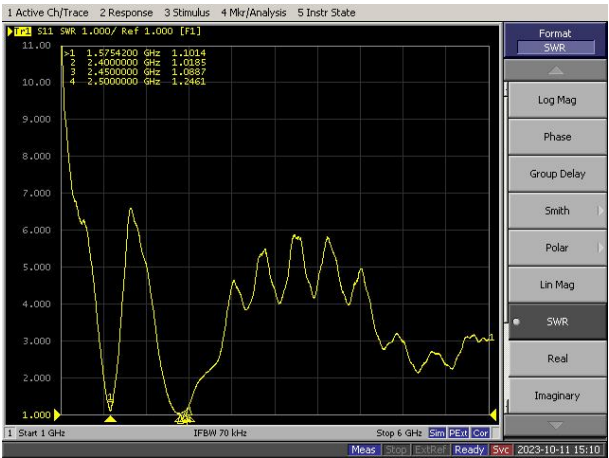
5-1

Characteristics	Specifications	Unit
Outline Dimensions	49.79x19.13x0.12	mm
Center Frequency	1.575+2.4-2.5	GHz
Bandwidth(under-10dB return loss)	130min	MHz
VSWR	3max	

5-2.

VSWR

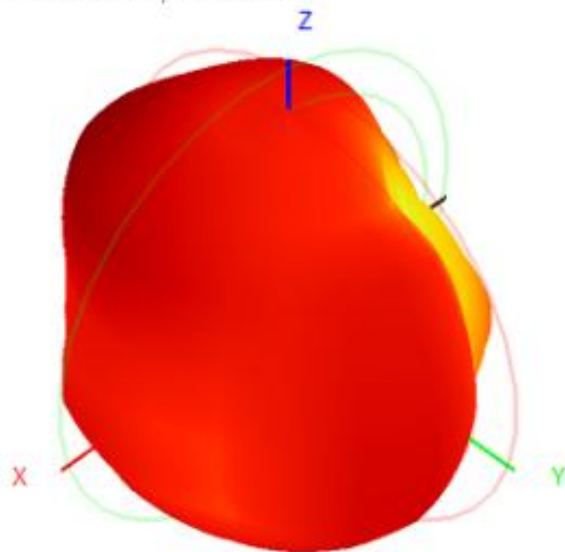
S11



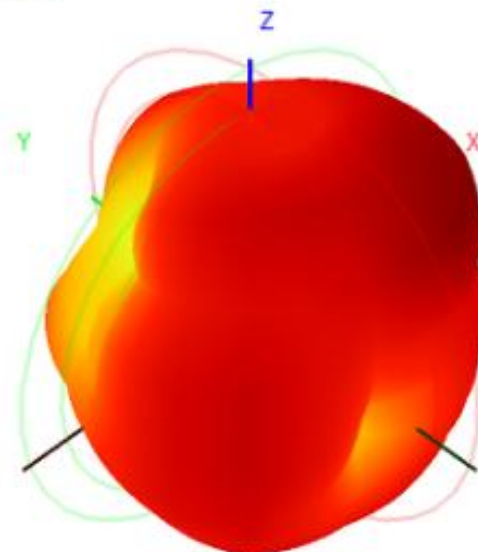
5-3.WIFI +BT Antenna Gain/Efficiency/Radiation Pattern of 3D

Frequency (MHz)	1575.0	2400.0	2410.0	2420.0	2430.0	2440.0	2450.0	2460.0	2470.0	2480.0	2490.0	2500.0
Efficiency (dBi)	-2.62	-2.84	-2.58	-2.45	-2.37	-2.59	-2.64	-2.42	-2.69	-2.53	-2.60	-2.71
Gain (dBi)	2.11	2.25	2.70	2.59	2.59	2.09	1.72	1.90	1.39	1.71	1.68	1.52
Efficiency (%)	54.69	52.03	55.24	56.83	57.97	55.13	54.42	57.32	53.84	55.85	54.96	53.64

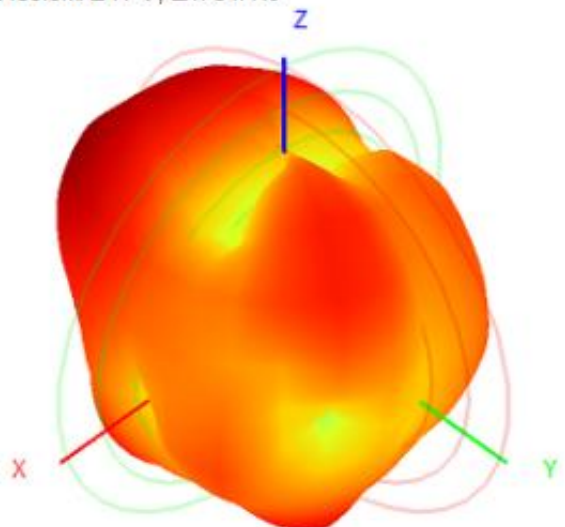
1575.0MHz H+V, Eff: 54.7%



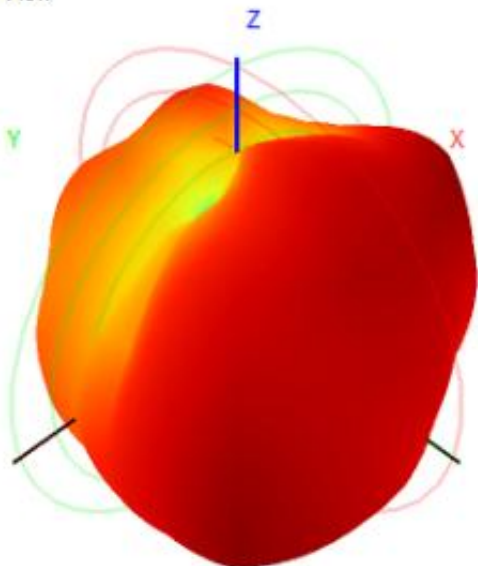
Back View



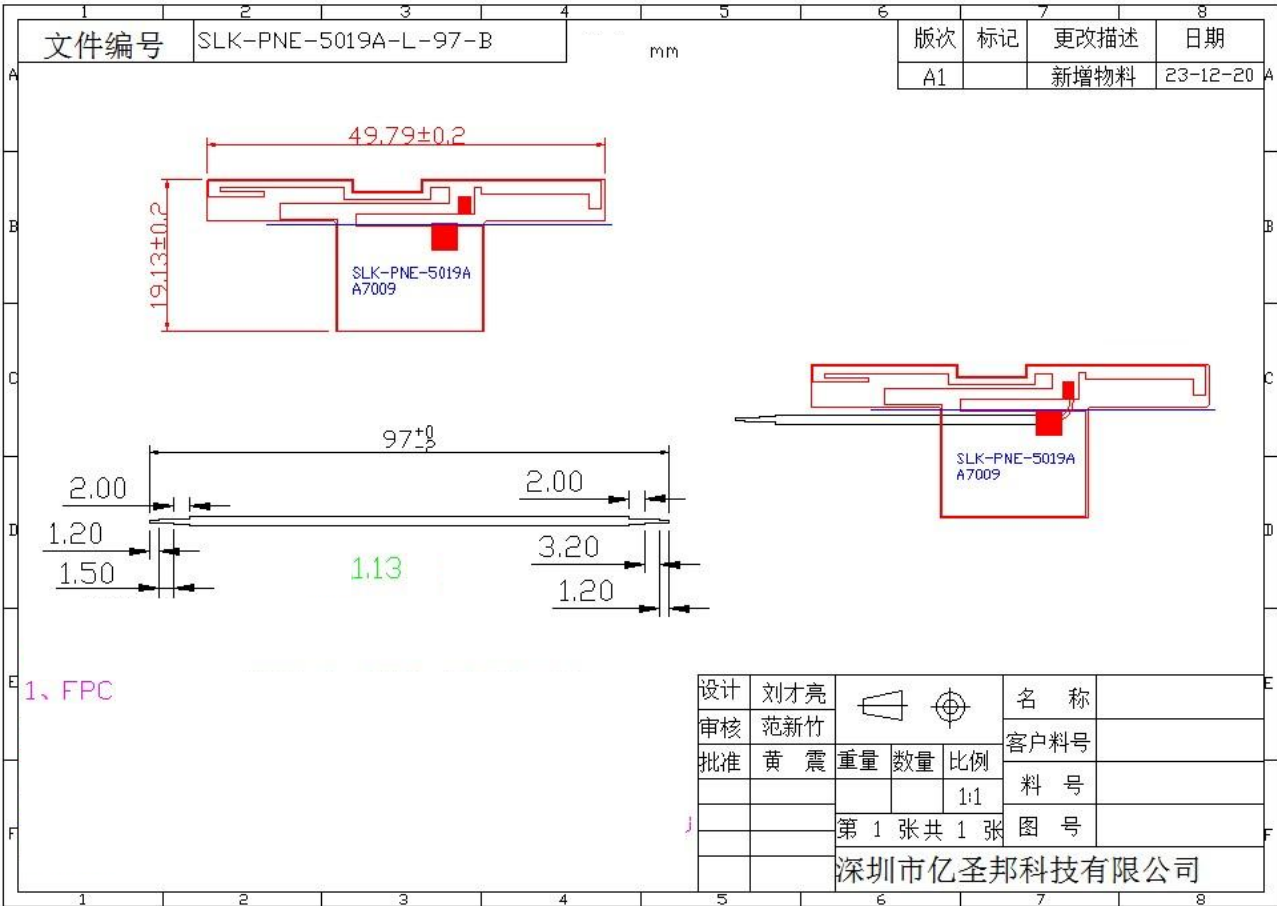
2450.0MHz H+V, Eff: 54.4%



Back View



6. Antenna Dimensions (unit: mm)



7. Antenna Picture

