

# DC HOUSE APP USER MANUAL

**Disclaimer & Warning:**

1. Thank you for choosing our products! Before using this product, please read this manual carefully. It includes important information and advice on installation, use, etc., and please keep this manual in a safe place.
2. The warranty does not cover failure of the product due to accidental damage, unauthorised repair, improper storage and use.

# I. Download and Install the App

## Requirements

- Mobile phone operating system requirements: Android 5.0, IOS 6.0 and above.
- The Bluetooth function and location services of the mobile phone system need to be turned on before use.
- The permissions required to run the software needs to be agreed after entering the software, otherwise it will affect the use of software functions.
- If the device is not searched for a long time, please check whether the Bluetooth and location services of the mobile phone system is turned on, whether the device is turned on and whether the software has been given the permission to locate the device.

## Steps

Android mobile phone users: search 'DC HOUSE' in google play, or scan the QR code below to download and install.



Apple mobile phone users: search for 'DC HOUSE' in the app store or scan the QR code below to download and install.

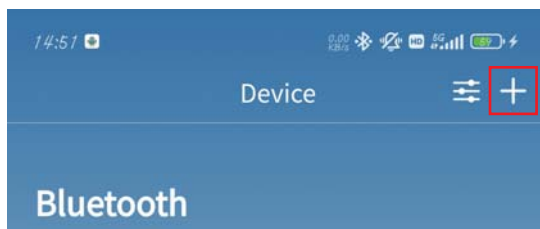


## II. Using Bluetooth Mode

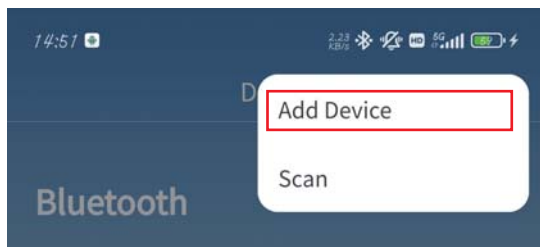
Bluetooth mode can be used both when you are logged in to your account or not, and the distance limitation is required between your mobile phone and the device when you use it.

### Steps

1.Put your mobile phone as close as possible to the device, then open eco-worthy APP to enter the device interface, and click the icon in the upper right corner.



2.Select the Add Device function. If the device has a QR code sticker on the back, you can select the scanning function to connect.



3.Select the number corresponding to the device to complete the Bluetooth connection.





## Warning:

This device complies with Part 15 of the FCC Rules. Operation is subject to the following two conditions:

- (1) this device may not cause harmful interference, and
- (2) this device must accept any interference received, including interference that may cause undesired operation.

Changes or modifications not expressly approved by the party responsible for compliance could void the user's authority to operate the equipment.

### **NOTE:**

This equipment has been tested and found to comply with the limits for a Class B digital device, pursuant to Part 15 of the FCC Rules. These limits are designed to provide reasonable protection against harmful interference in a residential installation. This equipment generates, uses and can radiate radio frequency energy and, if not installed and used in accordance with the instructions, may cause harmful interference to radio communications. However, there is no guarantee that interference will not occur in a particular installation.

If this equipment does cause harmful interference to radio or television reception which can be determined by turning the equipment off and on, the user is encouraged to try to correct the interference by one or more of the following measures:

--Reorient or relocate the receiving antenna.

-- Increase the separation between the equipment and receiver

--Connect the equipment into an outlet on a circuit different from that to which the receiver is connected.

--Consult the dealer or an experienced radio/TV technician for help

**NOTE:**

This device and its antenna(s) must not be co-located or operation in conjunction with any other antenna or transmitter.

**RF exposure:**

The device has been evaluated to meet general RF exposure requirement.



**DCHOUSE**



[service@dchousepower.com](mailto:service@dchousepower.com)



[www.dchousepower.com](http://www.dchousepower.com)

# DC HOUSE

## APP-BENUTZERHANDBUCH

### **Haftungsausschluss und Warnung:**

1. Vielen Dank, dass Sie sich für unsere Produkte entschieden haben! Bevor Sie dieses Produkt verwenden, lesen Sie bitte dieses Handbuch sorgfältig durch. Es enthält wichtige Informationen und Ratschläge zur Installation, Verwendung usw. und bewahren Sie dieses Handbuch bitte an einem sicheren Ort auf.
2. Die Garantie deckt keine Ausfälle des Produkts aufgrund von Unfallschäden, unbefugter Reparatur, unsachgemäßer Lagerung und Verwendung ab.