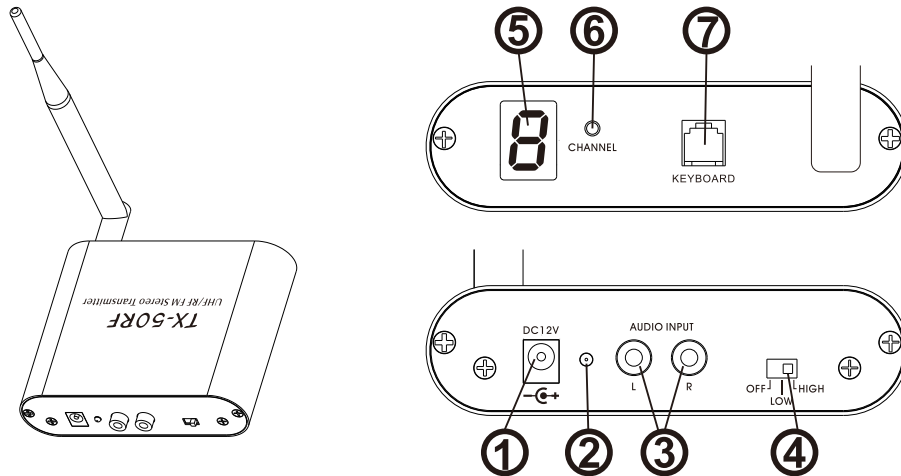


TX-50RF(10 channels) *USER MANUAL*

Wireless Stereo Transmitter Using the transmitter



- ① Power input
- ② Power Indicator
- ③ Audio input RCA connector
- ⑦ Keyboard connector

- ④ The power on/off and low/high switch
- ⑤ LED Indicator for transmit channel
- ⑥ Button for transmit channel selection

Technical Specifications

- 1) System: UHF/ RF
- 2) Modulation: FM
- 3) Mode: stereo
- 4) Channel: 3 channels
- 5) Operation distance: 100 meters(LOW)/ 300 meters(HIGH) open air
- 6) Channel separation: > 50dB
- 7) Distortion: < 1%
- 8) Frequency response: 30-20,000HZ
- 9) Power supply of transmitter: DC 12V 0.5A (included)

Using the transmitter

1. Switch ON audio /video component connected to the transmitter. When the audio signal input to the transmitter, turn on LOW / HIGH switch of the transmitter and the Power indicator illuminate. 'LOW' for 100 meters range and 'HIGH' for 300 meters range.
2. Slide the Power OFF Switch to power off the transmitter when it's not in use.
3. The channel option will be displayed on the screen.
4. Do not keep the transmitter very close to the headphones, especially for 'HIGH' output.

“This device complies with Industry Canada’s license-exempt RSSs. Operation is subject to the following two conditions:

(1) This device may not cause interference; and

(2) This device must accept any interference, including interference that may cause undesired operation of the device.”

« Le présent appareil est conforme aux CNR d'Industrie Canada applicables aux appareils radio exempts de licence.

L'exploitation est autorisée aux deux conditions suivantes : (1) l'appareil ne doit pas produire de brouillage, et

(2) l'utilisateur de l'appareil doit accepter tout brouillage radioélectrique subi, même si le brouillage est susceptible d'en compromettre le fonctionnement. »

FCC Warning

This device complies with Part 15 of the FCC Rules. Operation is subject to the following two conditions:

(1) This device may not cause harmful interference, and (2) this device must accept any interference received, including interference that may cause undesired operation.

NOTE 1: This equipment has been tested and found to comply with the limits for a Class B digital device, pursuant to part 15 of the FCC Rules. These limits are designed to provide reasonable protection against harmful interference in a residential installation. This equipment generates, uses and can radiate radio frequency energy and, if not installed and used in accordance with the instructions, may cause harmful interference to radio communications. However, there is no guarantee that interference will not occur in a particular installation. If this equipment does cause harmful interference to radio or television reception, which can be determined by turning the equipment off and on, the user is encouraged to try to correct the interference by one or more of the following measures:

- Reorient or relocate the receiving antenna.
- Increase the separation between the equipment and receiver.
- Connect the equipment into an outlet on a circuit different from that to which the receiver is connected.
- Consult the dealer or an experienced radio/TV technician for help.

NOTE 2: Any changes or modifications to this unit not expressly approved by the party responsible for compliance could void the user's authority to operate the equipment.

RF Exposure Statement

To maintain compliance with FCC'S RF Exposure guidelines, This equipment should be installed and operated with minimum distance of 20cm the radiator your body. This device and its antenna(s) must not be co-located or operation in conjunction with any other antenna or transmitter.