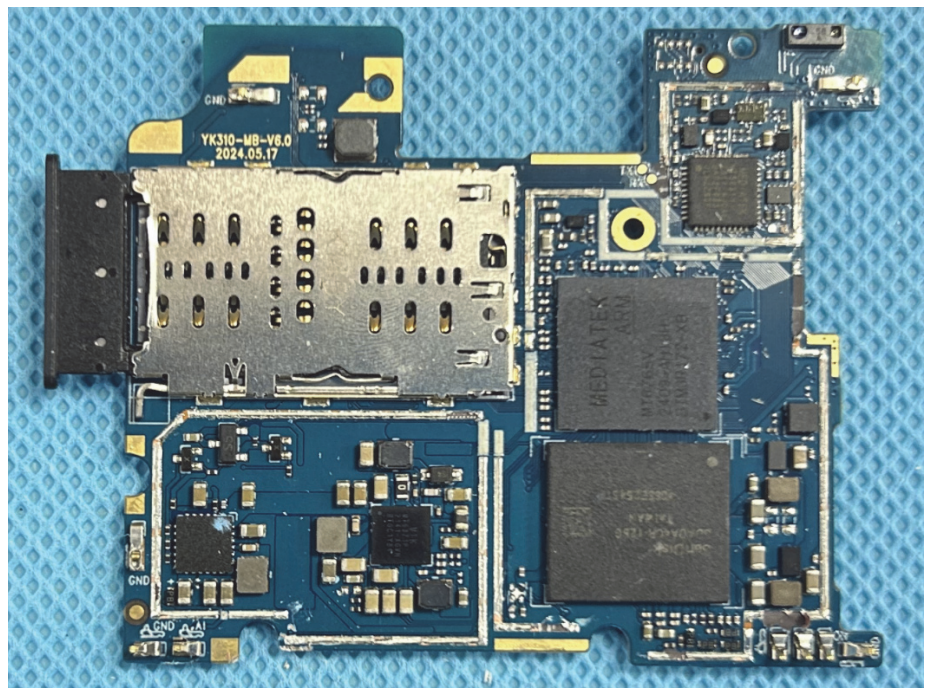
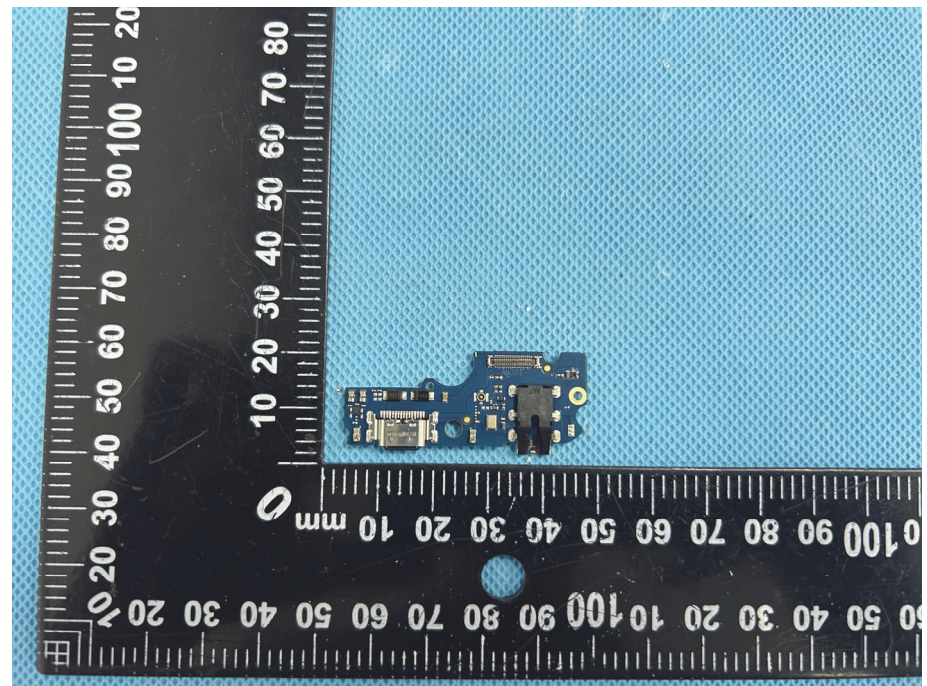
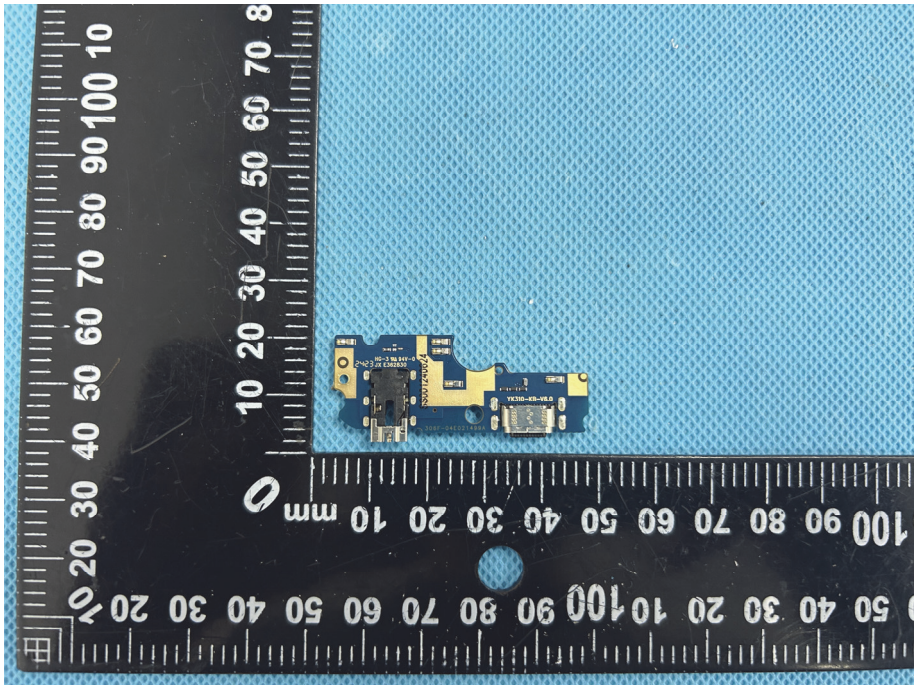



**Solder
Board-Component
View 6**



**Solder
Board-Component
View 7**



<p>Solder Board-Component View 8</p>	 <p>A photograph of a small blue printed circuit board (PCB) component, likely an antenna, resting on a blue textured surface. A black ruler with white markings is placed to the left and below the component for scale. The ruler shows measurements in millimeters, with markings every 10 mm and sub-markings every 1 mm. The component is rectangular with several gold-colored pads and a small connector.</p>
<p>Antenna View</p>	 <p>A photograph of the back of a smartphone chassis, showing the internal antenna layout. The chassis is black and set against a blue textured background. Three red boxes with callout lines point to specific antenna locations. The top-left box is labeled "GSM1900 ;WCDMA B2 ;WCDMA B4; LTE B2/B4/B66/B41Ant.". The top-right box is labeled "WIFI/BT/GPS Ant". The bottom box is labeled "GSM850; WCDMA B5 ; LTE B5/ /B12/B13/B17/B71Ant.". The antenna layout includes a large rectangular area at the top, a circular area in the middle, and a smaller rectangular area at the bottom.</p>