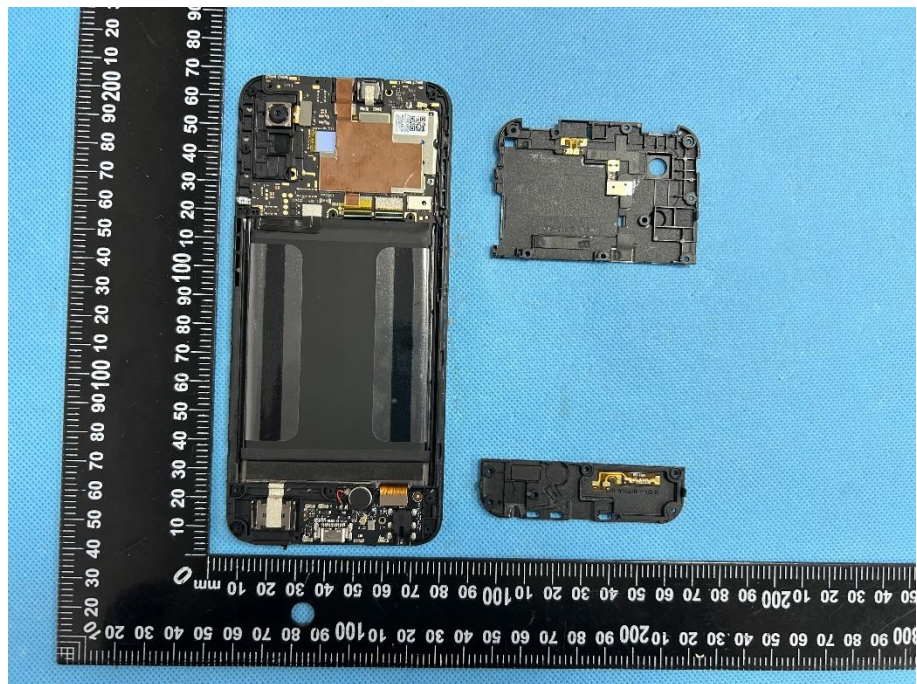


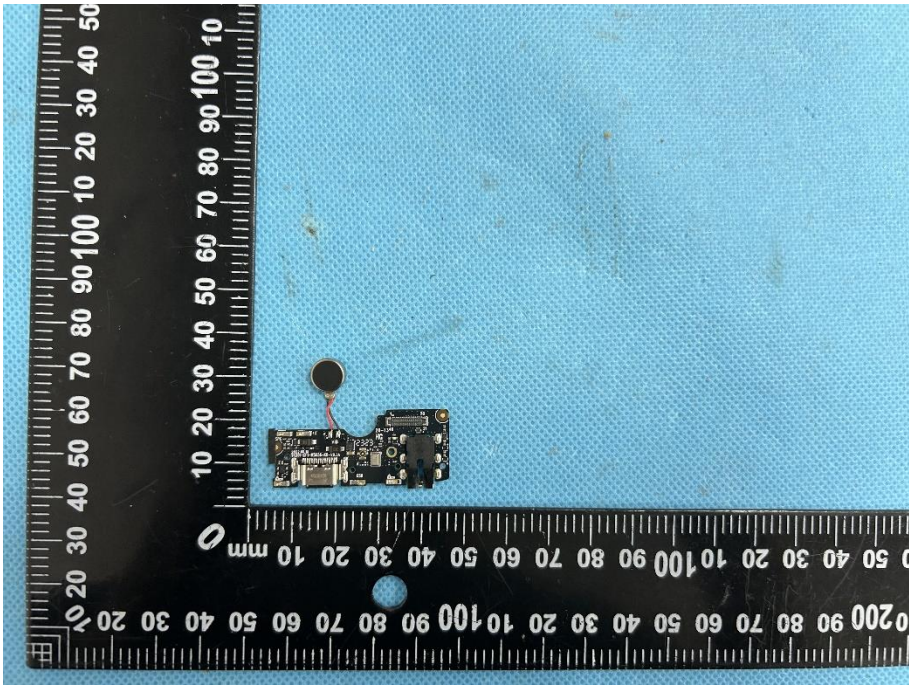

EXHIBIT 3 - EUT INTERNAL PHOTOGRAPHS

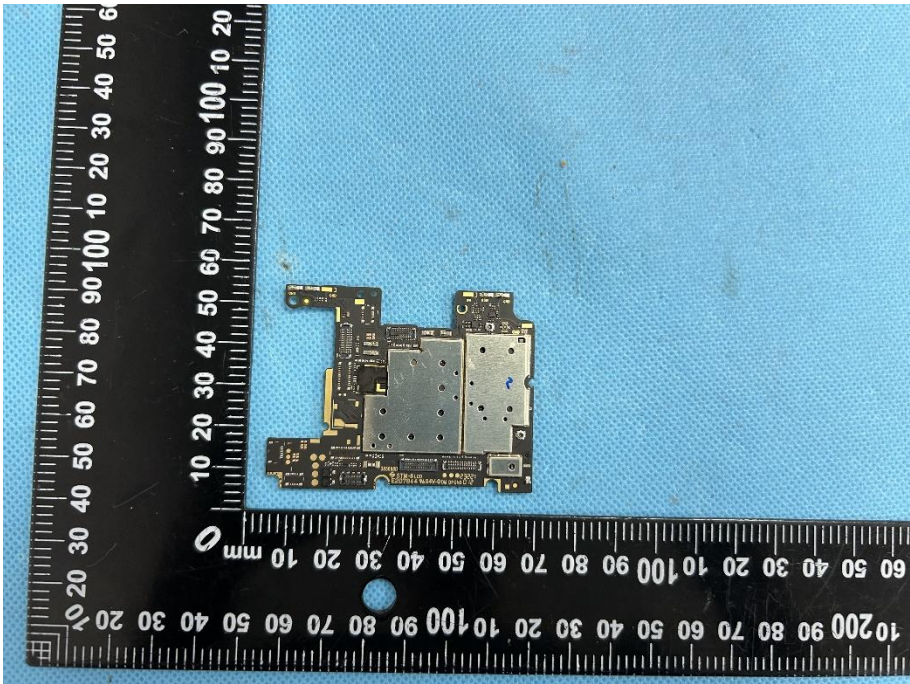
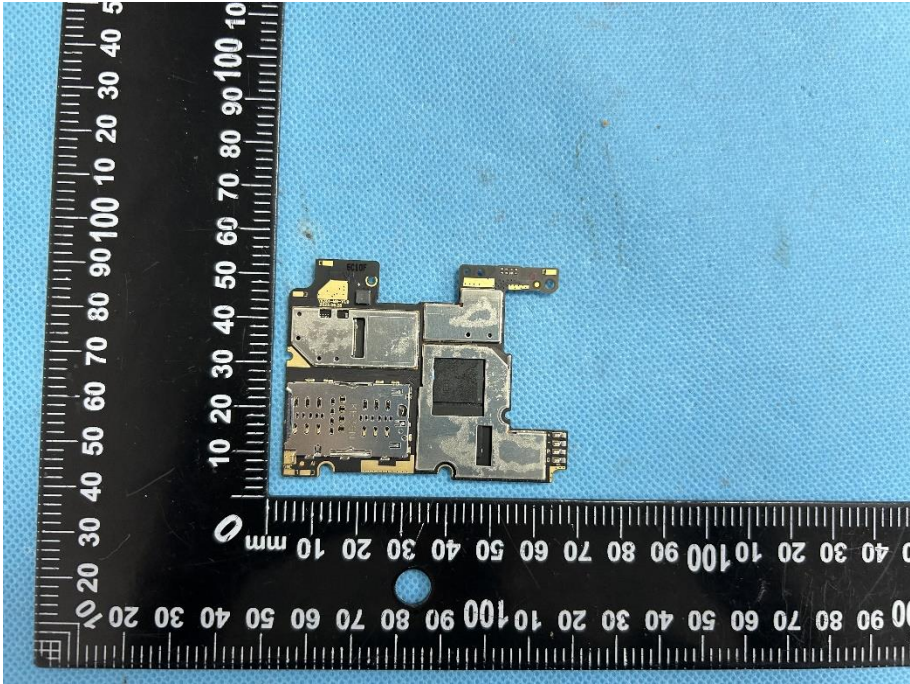
EUT Housing and Board View 1

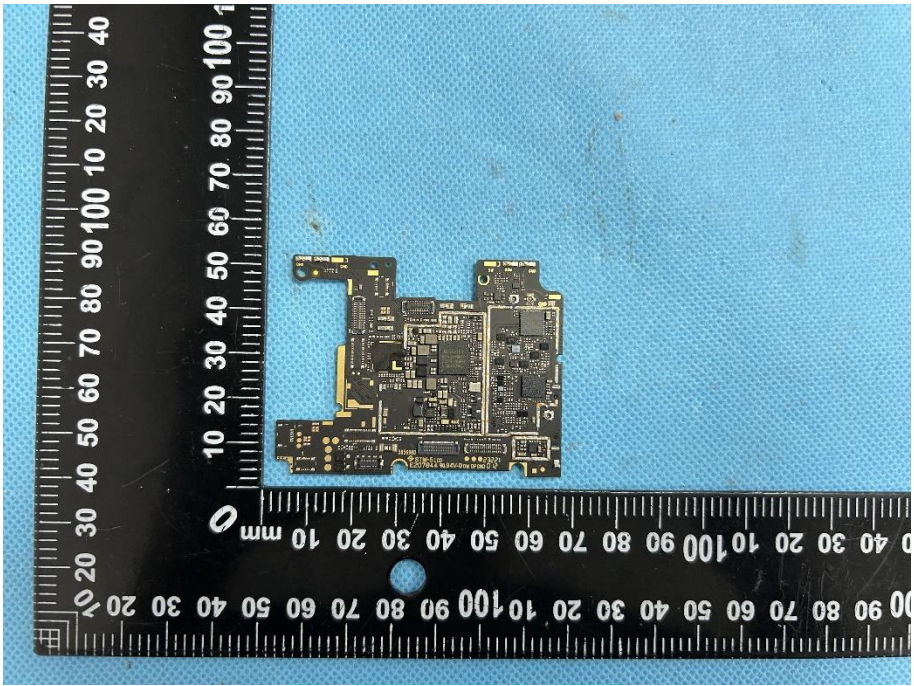
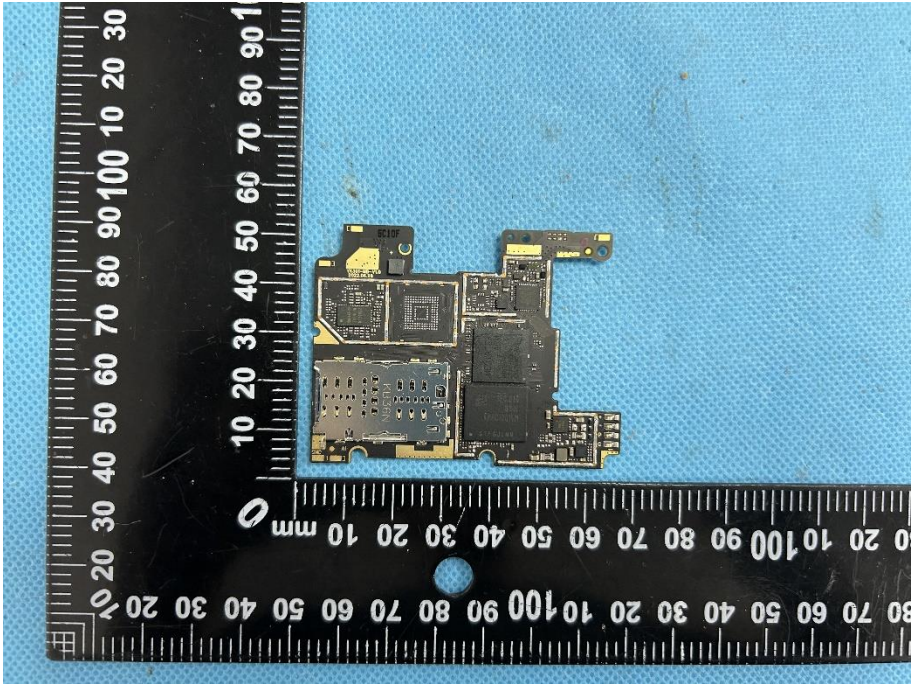


EUT Housing and Board View 2

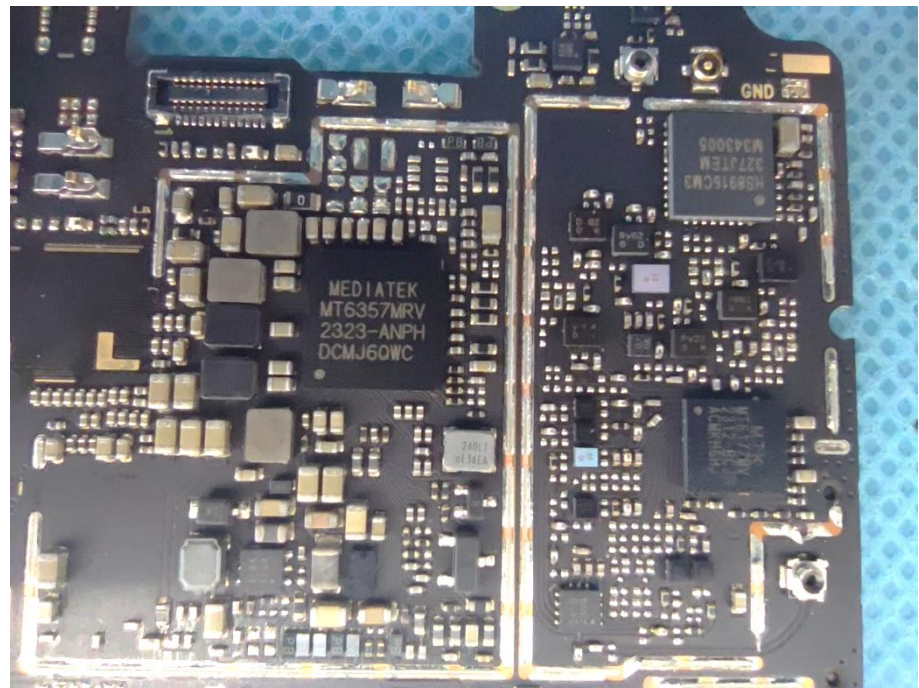


<p>Solder Board-Component View 1</p>	 A photograph showing a small, dark-colored printed circuit board (PCB) component with a circular component attached to its top surface. The component is placed on a blue textured surface next to a black L-shaped ruler for scale. The ruler has markings in millimeters, with the vertical scale on the left and the horizontal scale at the bottom. The component is positioned approximately between the 10-20 mm marks on both scales.
<p>Solder Board-Component View 2</p>	 A photograph showing the same PCB component from a different perspective, likely the reverse side. The component is dark-colored with a circular component attached to its top surface. It is placed on a blue textured surface next to a black L-shaped ruler for scale. The ruler has markings in millimeters, with the vertical scale on the left and the horizontal scale at the bottom. The component is positioned approximately between the 10-20 mm marks on both scales.

<p>Solder Board-Component View 3</p>	 A photograph of a soldered board component, likely a SIM card reader, placed on a blue textured surface. A black ruler with white markings is positioned vertically to the left of the component, showing measurements in millimeters. The component is a small, rectangular printed circuit board (PCB) with various electronic components, including a SIM card slot and several integrated circuits. The solder joints are visible, and the component is oriented horizontally.
<p>Solder Board-Component View 4</p>	 A photograph of the same soldered board component from a different perspective. The component is oriented vertically, showing the SIM card slot and the internal components more clearly. A black ruler with white markings is positioned vertically to the left of the component, showing measurements in millimeters. The component is placed on a blue textured surface.

<p>Solder Board-Component View 5</p>	 <p>A photograph of a small, irregularly shaped printed circuit board (PCB) component, likely a solder mask or a small board, placed on a blue textured surface. The component is dark green and features various electronic components, including a central square chip, several smaller rectangular chips, and numerous surface-mount components. A black ruler with white markings is positioned vertically to the left of the component, showing measurements in millimeters from 0 to 100. The component's length is approximately 60 mm and its width is approximately 40 mm.</p>
<p>Solder Board-Component View 6</p>	 <p>A photograph of the same PCB component as in View 5, but from a different perspective. The component is shown from a slightly different angle, highlighting its irregular shape and the placement of various components. A black ruler with white markings is positioned vertically to the left of the component, showing measurements in millimeters from 0 to 100. The component's length is approximately 60 mm and its width is approximately 40 mm.</p>

**Solder
Board-Component
View 7**



GSM1900;WCDMA B2;WCDMA B4;
LTE B2/B4/B66Ant.

WIFI/BT/GPS Ant

Antenna View



GSM850; WCDMA B5; LTE B5/
/B12/B71Ant.