

THE POWER OF

**REDARC**®

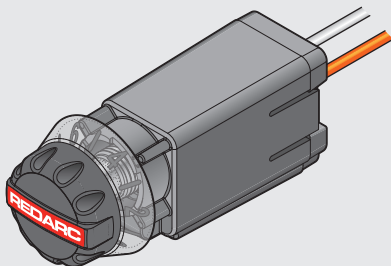
**INSTALL GUIDE**

## **TOW-PRO LINK™**

Dash Mounted Remote

**MODEL:**

- **EBRHX-DMT-RH**



# CONTENTS

<b>WARNINGS &amp; SAFETY INSTRUCTIONS</b>	<b>3</b>
<b>OVERVIEW</b>	<b>5</b>
Parts	5
<b>INSTALLATION – MOUNTING</b>	<b>6</b>
Mounting Steps	6
<b>INSTALLATION – WIRING</b>	<b>8</b>
Wiring Steps	8
Splice Connector Wiring	8
Wiring Diagram	9
<b>PAIRING TO THE MAIN UNIT</b>	<b>10</b>
Manual Pairing Steps	10
<b>OPERATION</b>	<b>11</b>
<b>TROUBLESHOOTING</b>	<b>11</b>
<b>TECHNICAL SPECIFICATIONS</b>	<b>12</b>
General Specifications	12
Dimensions	12
<b>COMPLIANCE AND STANDARDS</b>	<b>13</b>
<b>WARRANTY</b>	<b>15</b>

## LOOKING FOR MORE INFORMATION?

This Install Guide includes safety information and installation instructions relating to the **EBRHX-DMT-RH Dash Mounted Remote** only.

For installation instructions for the Tow-Pro Link Main Unit, refer to the supplied Install Guide.

For operation instructions, important safety information, specifications and compliance information for the Tow-Pro Link system, refer to the User Manual.



For the latest version of this document and any available translations, visit the REDARC website:  
[www.redarcelectronics.com/downloads](http://www.redarcelectronics.com/downloads)

## WARNINGS & SAFETY INSTRUCTIONS

**SAVE THESE INSTRUCTIONS** — This manual contains important safety instructions.

Do not operate the product unless you have read and understood this manual. The products referenced in this manual must be installed by a suitably qualified person.

**Disclaimer:** REDARC accepts no liability for any injury, loss or property damage which may occur from the improper or unsafe installation or use of its products.

### **▲ WARNING**

1. Any attempt to disassemble/reassemble the Remote or make unapproved repairs or modifications will void the warranty and the user's authority to operate the Tow-Pro Link.
2. Do not mount the Remote in a location that may affect the activation of vehicle air-bags.

### **▲ CAUTION**

3. It is the installers responsibility to ensure that the installation complies with local safety standards for dashboard mounted devices.
4. Ensure that a correct grounding point is used. Vehicles often have ungrounded metal reinforcements under the dashboard and these points are not suitable grounds. Bad grounding of the unit will result in poor or no operation.
5. Do not route cables over hot surfaces or sharp objects, or over/through parts of the vehicle that move during operation or maintenance.

### PERSONAL SAFETY PRECAUTIONS:

To assist with the safe installation of the Tow-Pro:

- a.** Wear complete eye protection and clothing protection. Avoid touching eyes while working near a battery.
- b.** If battery acid contacts your skin or clothing, remove the affected clothing and wash the affected area of your skin immediately with soap and water. If battery acid enters your eye, immediately flood the eye with running cold water for at least 10 minutes and seek medical assistance immediately.
- c.** Use Personal Protective Equipment (PPE). Wear complete eye protection and clothing protection.



## OVERVIEW

The EBRHX-DMT-RH Dash Mounted Remote wirelessly connects to and controls the Main Unit of the Tow-Pro Link electric brake controller. It is hard-wired and mounts permanently to the dashboard, to the centre console, or through a spare switch blank insert.

## PARTS

### 1. CONTROL KNOB

### 2. PLASTIC NUT

### 3. BEZEL

4. Level Marker

5. Adhesive Backing

### 6. REMOTE BODY

7. Shaft

8. Connector Socket

### 9. POWER WIRING LOOM

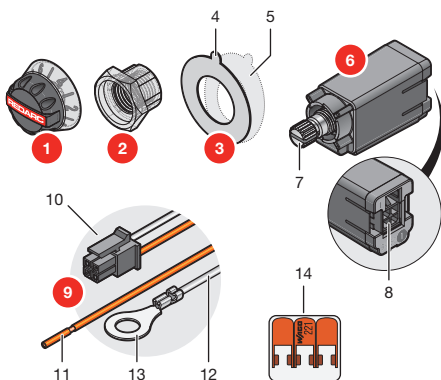
10. Connector

11. Power Wire 2 m (6'6"), 0.5 mm<sup>2</sup> (20 AWG)

12. Ground Wire 1 m (3'3"), 0.5 mm<sup>2</sup> (20 AWG)

13. M6 Ring Terminal

### 14. SPLICE CONNECTOR (Wago® 221-413)



## INSTALLATION — MOUNTING

The Remote mounts directly to the dashboard or centre console or through a spare switch blank insert. Mount the Remote within easy reach of the driver for immediate access in emergency situations.

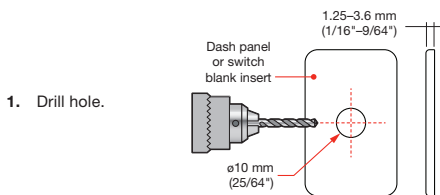
If mounting the Tow-Pro Link Remote to panels thinner than 1.25 mm (1/16"), use washers to reinforce the structure of the panel.

**⚠ WARNING:** Do not mount the Remote in a location that may affect the activation of vehicle air-bags.

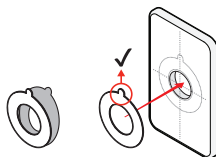
### ⚠ CAUTION:

- It is the installers responsibility to ensure that the installation complies with local safety standards for dashboard mounted devices.
- Make sure the Control Knob activates correctly when installed into panels thicker than 3.0 mm (0.12"). If the Control Knob cannot be pressed all the way down, the SwayStop manual override will not work.

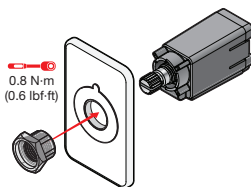
## MOUNTING STEPS



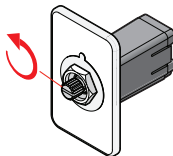
2. Remove the adhesive backing from the Bezel. With the Level Marker at the top, apply the Bezel to the cleaned surface.



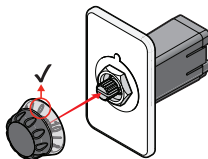
- 
3. Insert the Control Knob's shaft through the hole and fasten using the supplied Plastic Nut.



4. Turn shaft fully anti-clockwise.



5. Apply the Control Knob with '0' at the top (aligned to level marker on the Bezel).



6. Test the installed Control Knob to make sure it can be pressed all the way down until it makes a soft 'click' sound.



## INSTALLATION — WIRING

**⚠ CAUTION:** Wiring must only be carried out by a suitably qualified installer.

### WIRING STEPS

1. Connect the M6 Ring Terminal on the Ground Wire (white) to a ground point on the vehicle body. These are usually located behind the glove box or the removable kick panels on the driver or passenger side of the vehicle.  
Make sure the ground point is clean (not rusty or painted) to ensure a good electrical connection.
2. The Power Supply Wire (orange) should ideally be spliced into a 5 A fused 12V accessory wire using the supplied Splice Connector.  
If connecting to a wire that is fused to 5 A or higher, a 2 A fuse must be added to the orange wire as close to the Splice Connector as possible.
3. Plug the Connector on the Power Wiring Loom into back of the Remote Body.
4. **Test the Remote to make sure it is working;** If the Control Knob does not illuminate when you completely press it down for a few seconds, try removing the optional Bezel and then test again.

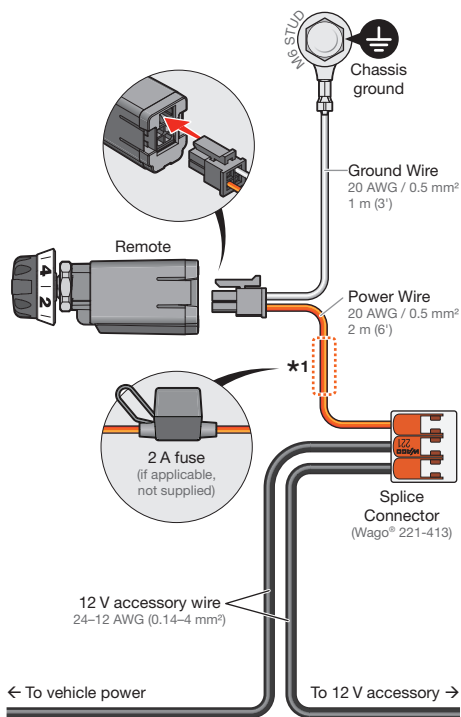
### SPLICE CONNECTOR WIRING

To connect wires to the Splice Connector:

1. Make sure the 12 V accessory wire gauge is at least 24–12 AWG (0.14–4 mm<sup>2</sup>).
2. Strip 11 mm (½") from the end of the wire.
3. Open the lever on an available Splice Connector terminal.
4. Push the stripped wire into the Splice Connector terminal.
5. Close the lever.



## WIRING DIAGRAM



**\*1** If connecting to a wire that is fused to 5A or higher, a 2A fuse must be added to the orange wire as close to the Splice Connector as possible.

## PAIRING TO THE MAIN UNIT

The Tow-Pro Main Unit and Remote are supplied factory-paired when purchased as a complete system, so Manual Pairing is not needed.

If the Main Unit or Remote were purchased separately or as a replacement, they must be paired before use.

### MANUAL PAIRING STEPS

**Before you begin the pairing process, make sure:**

- ✓ the trailer is attached;
- ✓ the vehicle is completely stationary and the hand brake is applied;
- ✓ accessories/ignition is turned on (i.e., the Main Unit and Remote have power);
- ✓ the Remote starts, at power-on, with no LED indication;
- ✓ the Main Unit is not connected to another Remote.

1. Pump the vehicle brakes 3 times to enter pairing mode on the Main Unit. When pairing mode is active, the trailer's brake lights will flash slowly.

**NOTE:** The Main Unit will exit pairing mode if no device is found within 10 minutes, or if the vehicle moves. If this happens, you need to unplug the trailer plug and then reconnect it before entering pairing mode again.

2. Reduce the Braking Force to '0' (zero) by turning the Control Knob fully counter-clockwise.
3. On the Remote, press-and-hold the Control Knob until the LED begins to flash rapidly blue, then release it.
4. The LED will continue to flash blue as it attempts to connect to nearby devices.
5. When the Main Unit establishes communication with the Remote, the LEDs will begin to flash faster.
6. To confirm pairing, immediately press-and-hold the vehicle brakes, then press-and-release the Control Knob once. When successfully paired, the LEDs will remain solid blue (if in Everyday/Proportional mode) or solid green (if in Manual Off-road/User Controlled mode). Release the vehicle brakes.
7. If this process fails at any stage the LEDs will turn off. Return to step 1 and try again.

## **OPERATION**

For operation instructions, refer to the User Manual supplied with the Main Unit.

The User Manual can be downloaded at:

[\*\*www.redarcelectronics.com/downloads\*\*](http://www.redarcelectronics.com/downloads)

## **TROUBLESHOOTING**

For troubleshooting information, refer to the User Manual.

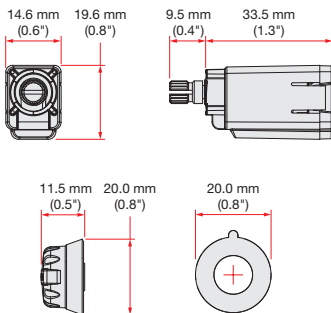
## TECHNICAL SPECIFICATIONS

### GENERAL SPECIFICATIONS

	EBRHX-DMT-RH
Nominal voltage range*	12 V $\approx$
Operating voltage range*	5 to 16 V $\approx$
Operating current (Max.)	< 500 mA
Standby current	< 5 mA
Operating temp	-40°C to +60°C -40°F to 140°F
Main Unit Compatibility	EBRHX-MU, EBRHX-MU-NA
Braking Levels	0 (off) to 10
Waterproof	No

\*Voltages specified are  $\pm 100$  mV.

### DIMENSIONS



# COMPLIANCE AND STANDARDS

Standards



ICES

CAN ICES-003 (B)/ NMB-003(B)

## FEDERAL COMMUNICATIONS COMMISSION (FCC) STATEMENT

### FCC Statement — Class B

**Note:** This equipment has been tested and found to comply with the limits for a Class B digital device, pursuant to part 15 of the FCC Rules. These limits are designed to provide reasonable protection against harmful interference in a residential installation. This equipment generates, uses and can radiate radio frequency energy and, if not installed and used in accordance with the instructions, may cause harmful interference to radio communications. However, there is no guarantee that interference will not occur in a particular installation. If this equipment does cause harmful interference to radio or television reception, which can be determined by turning the equipment off and on, the user is encouraged to try to correct the interference by one or more of the following measures:

- Reorient or relocate the receiving antenna.
- Increase the separation between the equipment and receiver.
- Connect the equipment into an outlet on a circuit different from that to which the receiver is connected.
- Consult the dealer or an experienced radio/TV technician for help.

This equipment complies with the FCC and ICSED Canada radiation exposure limits set forth for an uncontrolled environment. This equipment should be installed and operated with a minimum distance of 20 cm between the radiator and all persons during normal operation.

**WARNING:** Any changes or modifications not expressly approved by the grantee could void the user's authority to operate this equipment.

FCC ID: 2BAH6-EBRHXDMTRH

### Details of the Responsible party:

REDARC Corporation, 1701 Northwest Highway, Suite 100  
Grapevine TX, 76051, USA  
Phone: +1 (704) 247 5150

## **INDUSTRY CANADA (IC) COMPLIANCE NOTICE**

This equipment complies with the FCC and ISCED Canada radiation exposure limits set forth for an uncontrolled environment. This equipment should be installed and operated with a minimum distance of 20 cm between the radiator and all persons during normal operation.

### **ICES Statement — Intentional Transmitter**

This device complies with Part 15 of the FCC Rules and with Innovation, Science and Economic Development Canada's licence-exempt RSS(s). Operation is subject to the following two conditions:

1. This device may not cause interference.
2. This device must accept any interference, including interference that may cause undesired operation of the device.

IC: 30290-EBRHXMTRH

## **AVIS DE CONFORMITÉ D'INDUSTRIE CANADA (IC)**

Cet équipement est conforme aux limites d'exposition aux rayonnements de la FCC et ISCED Canada établies pour un environnement non contrôlé. Cet équipement doit être installé et utilisé avec une distance minimale de 20 cm entre le radiateur et toutes les personnes pendant le fonctionnement normal.

### **Déclaration du CIEM — Émetteur intentionnel**

L'émetteur/récepteur exempt de licence contenu dans le présent appareil est conforme aux CNR d'Innovation, Sciences et Développement économique Canada applicables aux appareils radio exempts de licence. L'exploitation est autorisée aux deux conditions suivantes:

- L'appareil ne doit pas produire de brouillage.
- L'appareil doit accepter tout brouillage radioélectrique subi, même si le brouillage est susceptible d'en compromettre le fonctionnement

IC: 30290-EBRHXMTRH

## WARRANTY

For full warranty terms and conditions, visit the Warranty page of the REDARC website at [www.redarcelectronics.com/warranty](http://www.redarcelectronics.com/warranty).

### AUSTRALIA, NEW ZEALAND & EUROPE

REDARC Electronics Pty Ltd, 23 Brodie Road (North),  
Lonsdale SA 5160, Australia

**Australia**..... +61 8 8322 4848  
**New Zealand**..... +64 9 222 1024  
**UK & Europe** ..... +44 (0)20 3930 8109

### NORTH AMERICA

REDARC Corporation, c/o Shallco, Inc., 308 Component Dr.,  
Smithfield, NC 27577, USA

**USA** ..... +1 (704) 247 5150  
**Canada**..... +1 (604) 260 5512  
**Mexico** ..... +52 (558) 526 2898

### CHECKING THE PRODUCT SERIAL NUMBER

The product serial number is located on the side of the Remote Body and on the product packaging.

**PATENTS:** This product may have patent(s) granted and/or pending, design and eligible layout rights may also subsist.  
Visit [www.redarcelectronics.com/patent](http://www.redarcelectronics.com/patent).

Design, product configuration and technical specifications are subject to change without notice. | Copyright © REDARC Electronics Pty Ltd. All rights reserved. | REDARC®, THE POWER OF REDARC®, Tow-Pro® and Tow-Pro Link™ are trademarks of REDARC Electronics Pty Ltd.

**REDARC Electronics Pty Ltd** | ABN 77 136 785 092  
REDARC Electronics Pty Ltd, 23 Brodie Road (North),  
Lonsdale SA 5160, Australia



**Tech Support**

1300 REDARC (1300-733-272)

**Australia**

+61 8 8322 4848

**New Zealand**

+64 9 222 1024

**UK & Europe**

+44 (0)20 3930 8109

**USA**

+1 (704) 247-5150

**Canada**

+1 (604) 260-5512

**Mexico**

+52 (558) 526-2898

**redarcelectronics.com**

INST199-1