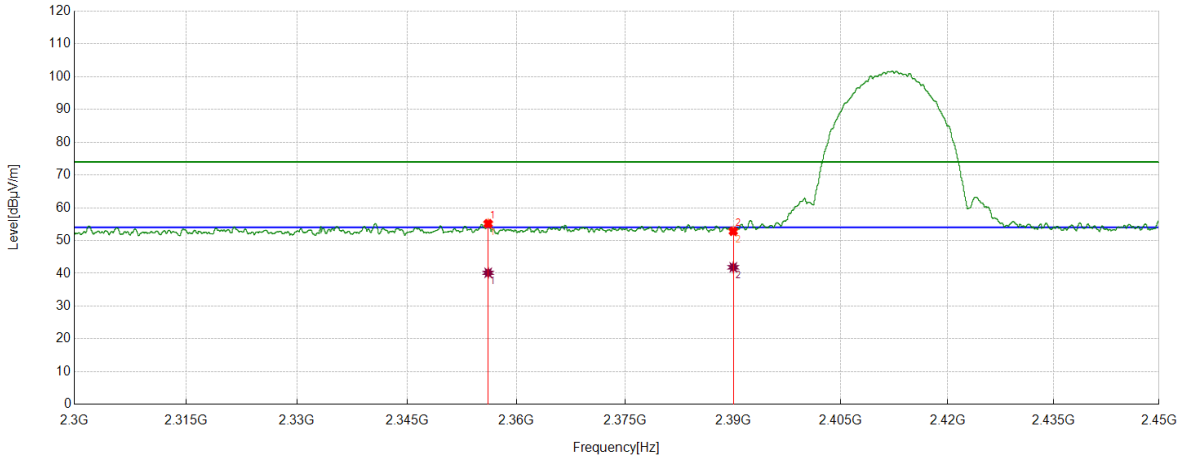


TEST GRAPHS

Test Mode	Channel	Polarization	Verdict
11B	LCH	Horizontal	PASS



PK Result:

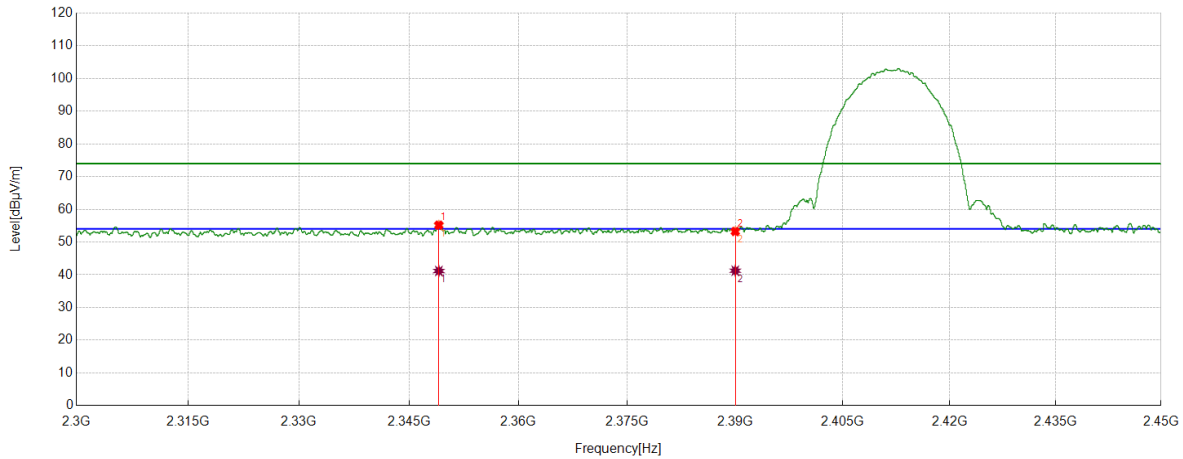
No.	Frequency	Reading Level	Correct Factor	Result	Limit	Margin	Remark
	[MHz]	[dBuV]	[dB/m]	[dBuV/m]	[dBuV/m]	[dB]	
1	2356.1258	45.25	9.91	55.16	74.00	-18.84	Horizontal
2	2390.0000	42.49	10.35	52.84	74.00	-21.16	Horizontal

AV Result:

No.	Frequency	Reading Level	Correct Factor	Result	Limit	Margin	Remark
	[MHz]	[dBuV]	[dB/m]	[dBuV/m]	[dBuV/m]	[dB]	
1	2356.1258	30.25	9.91	40.16	54.00	-13.84	Horizontal
2	2390.0000	31.49	10.35	41.84	54.00	-12.16	Horizontal

- Note: 1. Peak detector: RBW: 1 MHz, VBW: 3 MHz.
 2. Average detector: RBW: 1 MHz, VBW: 1/T MHz(refer to clause 7.1.).
 3. Measurement = Reading Level + Correct Factor,
 Correct Factor = Antenna Factor + Loss (Cable + Attenuator) – Amplifier Gain.
 4. Only the worst case emission was recorded, if it complies with the limit, the other emissions deemed to comply with the limit.

Test Mode	Channel	Polarization	Verdict
11B	LCH	Vertical	PASS



PK Result:

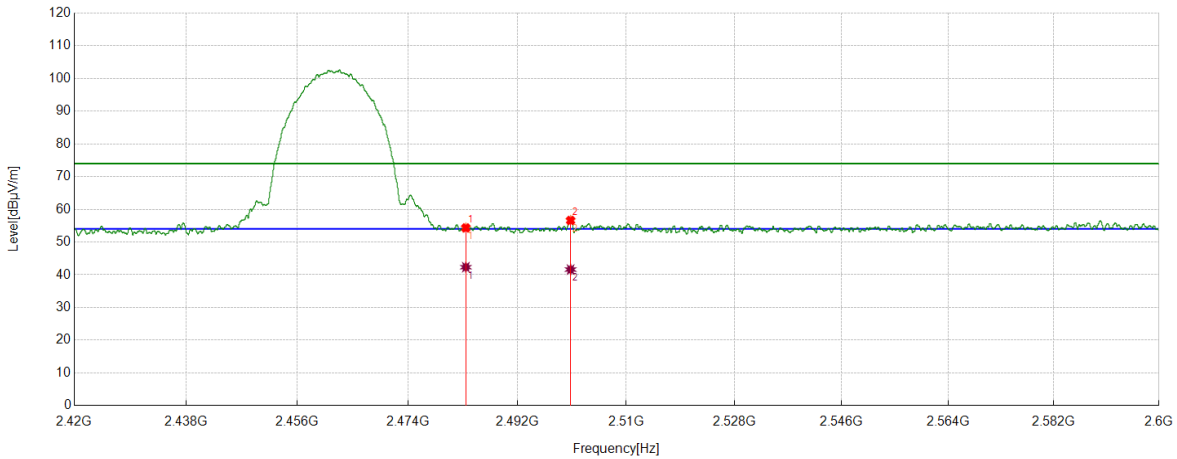
No.	Frequency	Reading Level	Correct Factor	Result	Limit	Margin	Remark
	[MHz]	[dBuV]	[dB/m]	[dBuV/m]	[dBuV/m]	[dB]	
1	2349.0936	45.25	9.91	55.16	74.00	-18.84	Vertical
2	2390.0000	42.89	10.35	53.24	74.00	-20.76	Vertical

AV Result:

No.	Frequency	Reading Level	Correct Factor	Result	Limit	Margin	Remark
	[MHz]	[dBuV]	[dB/m]	[dBuV/m]	[dBuV/m]	[dB]	
1	2349.0936	31.25	9.91	41.16	54.00	-12.84	Vertical
2	2390.0000	30.89	10.35	41.24	54.00	-12.76	Vertical

- Note: 1. Peak detector: RBW: 1 MHz, VBW: 3 MHz.
 2. Average detector: RBW: 1 MHz, VBW: 1/T MHz(refer to clause 7.1).
 3. Measurement = Reading Level + Correct Factor,
 Correct Factor = Antenna Factor + Loss (Cable + Attenuator) – Amplifier Gain.
 4. Only the worst case emission was recorded, if it complies with the limit, the other emissions deemed to comply with the limit.

Test Mode	Channel	Polarization	Verdict
11B	HCH	Horizontal	PASS



PK Result:

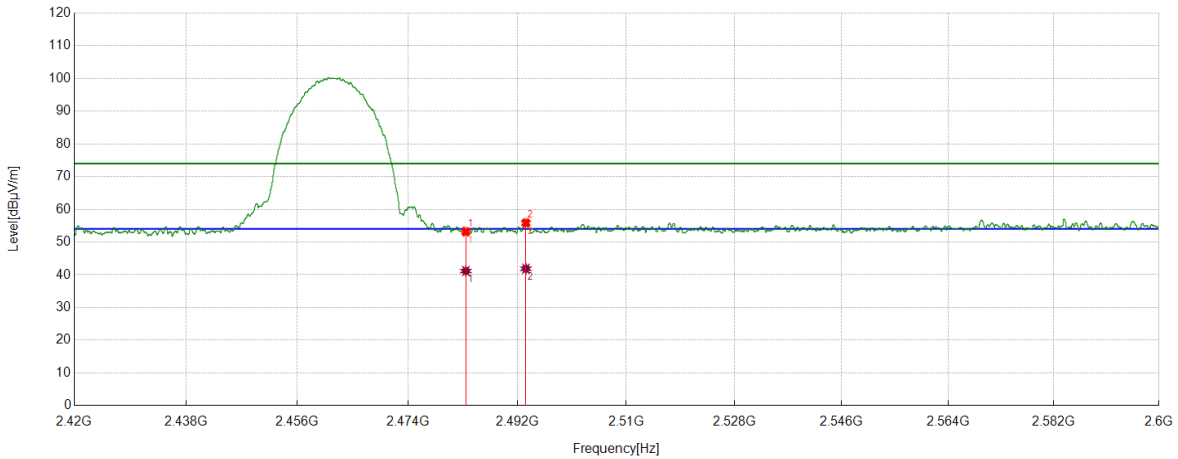
No.	Frequency	Reading Level	Correct Factor	Result	Limit	Margin	Remark
	[MHz]	[dBuV]	[dB/m]	[dBuV/m]	[dBuV/m]	[dB]	
1	2483.5000	43.68	10.64	54.32	74.00	-19.68	Horizontal
2	2500.7626	45.84	10.76	56.60	74.00	-17.40	Horizontal

AV Result:

No.	Frequency	Reading Level	Correct Factor	Result	Limit	Margin	Remark
	[MHz]	[dBuV]	[dB/m]	[dBuV/m]	[dBuV/m]	[dB]	
1	2483.5000	31.68	10.64	42.32	54.00	-11.68	Horizontal
2	2500.7626	30.84	10.76	41.60	54.00	-12.40	Horizontal

- Note: 1. Peak detector: RBW: 1 MHz, VBW: 3 MHz.
 2. Average detector: RBW: 1 MHz, VBW: 1/T MHz(refer to clause 7.1.).
 3. Measurement = Reading Level + Correct Factor,
 Correct Factor = Antenna Factor + Loss (Cable + Attenuator) – Amplifier Gain.
 4. Only the worst case emission was recorded, if it complies with the limit, the other emissions deemed to comply with the limit.

Test Mode	Channel	Polarization	Verdict
11B	HCH	Vertical	PASS



PK Result:

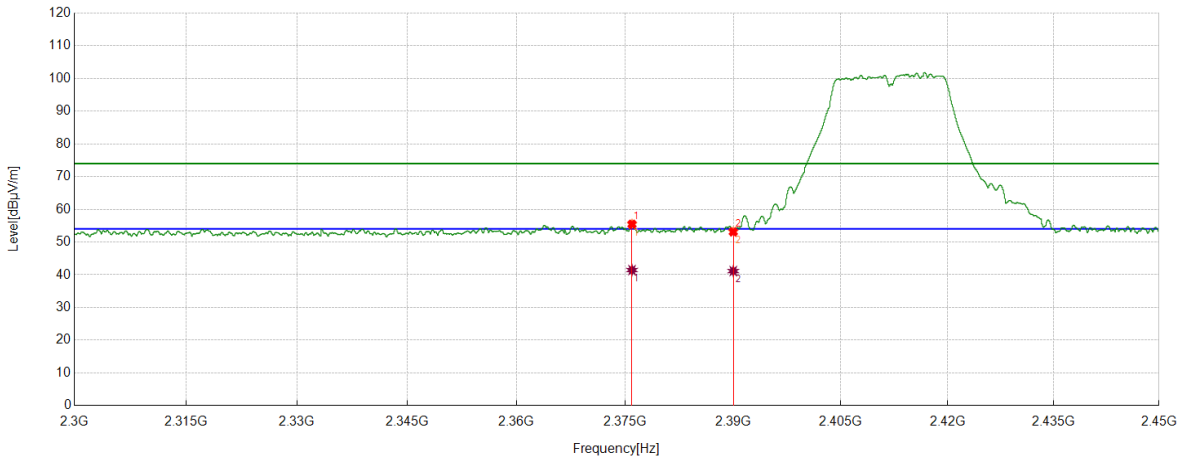
No.	Frequency	Reading Level	Correct Factor	Result	Limit	Margin	Remark
	[MHz]	[dBuV]	[dB/m]	[dBuV/m]	[dBuV/m]	[dB]	
1	2483.5000	42.51	10.64	53.15	74.00	-20.85	Vertical
2	2493.3817	45.08	10.77	55.85	74.00	-18.15	Vertical

AV Result:

No.	Frequency	Reading Level	Correct Factor	Result	Limit	Margin	Remark
	[MHz]	[dBuV]	[dB/m]	[dBuV/m]	[dBuV/m]	[dB]	
1	2483.5000	30.51	10.64	41.15	54.00	-12.85	Vertical
2	2493.3817	31.08	10.77	41.85	54.00	-12.15	Vertical

- Note: 1. Peak detector: RBW: 1 MHz, VBW: 3 MHz.
 2. Average detector: RBW: 1 MHz, VBW: 1/T MHz(refer to clause 7.1.).
 3. Measurement = Reading Level + Correct Factor,
 Correct Factor = Antenna Factor + Loss (Cable + Attenuator) – Amplifier Gain.
 4. Only the worst case emission was recorded, if it complies with the limit, the other emissions deemed to comply with the limit.

Test Mode	Channel	Polarization	Verdict
11G	LCH	Horizontal	PASS



PK Result:

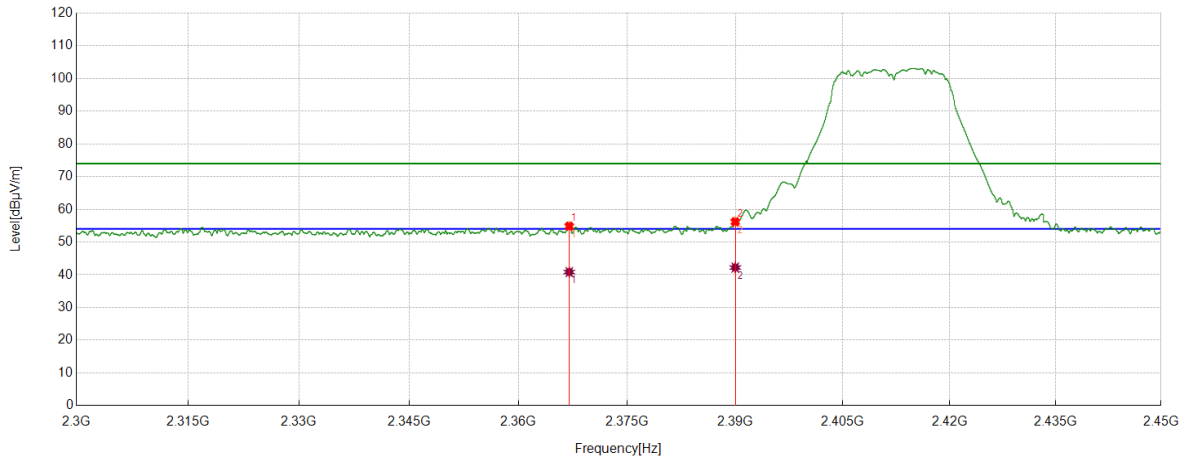
No.	Frequency	Reading Level	Correct Factor	Result	Limit	Margin	Remark
	[MHz]	[dBuV]	[dB/m]	[dBuV/m]	[dBuV/m]	[dB]	
1	2375.947	45.21	10.23	55.44	74.00	-18.56	Horizontal
2	2390.0000	42.78	10.35	53.13	74.00	-20.87	Horizontal

AV Result:

No.	Frequency	Reading Level	Correct Factor	Result	Limit	Margin	Remark
	[MHz]	[dBuV]	[dB/m]	[dBuV/m]	[dBuV/m]	[dB]	
1	2375.947	31.21	10.23	41.44	54.00	-12.56	Horizontal
2	2390.0000	30.78	10.35	41.13	54.00	-12.87	Horizontal

- Note: 1. Peak detector: RBW: 1 MHz, VBW: 3 MHz.
 2. Average detector: RBW: 1 MHz, VBW: 1/T MHz(refer to clause 7.1.).
 3. Measurement = Reading Level + Correct Factor,
 Correct Factor = Antenna Factor + Loss (Cable + Attenuator) – Amplifier Gain.
 4. Only the worst case emission was recorded, if it complies with the limit, the other emissions deemed to comply with the limit.

Test Mode	Channel	Polarization	Verdict
11G	LCH	Vertical	PASS



PK Result:

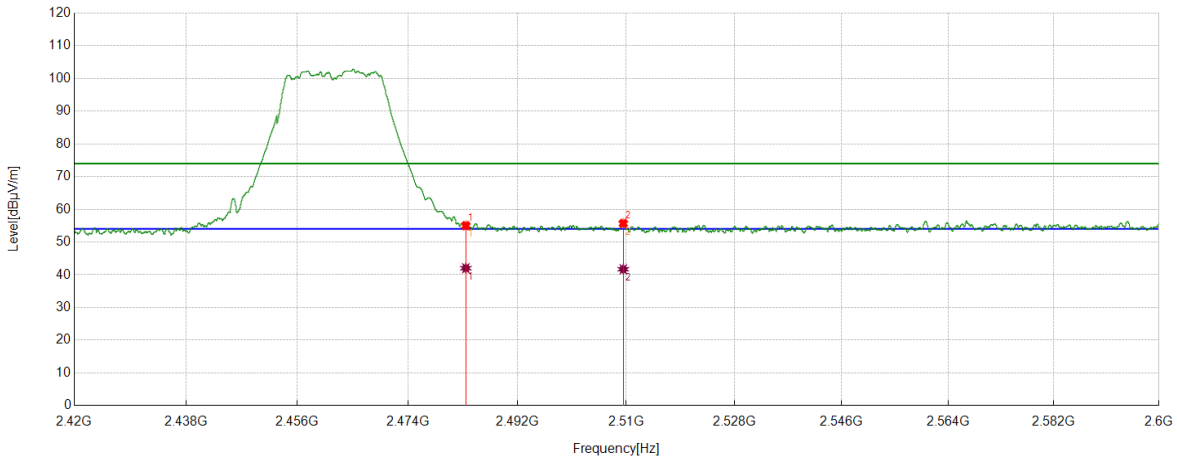
No.	Frequency	Reading Level	Correct Factor	Result	Limit	Margin	Remark
	[MHz]	[dBuV]	[dB/m]	[dBuV/m]	[dBuV/m]	[dB]	
1	2367.0021	44.78	10.06	54.84	74.00	-19.16	Vertical
2	2390.0000	45.86	10.35	56.21	74.00	-17.79	Vertical

AV Result:

No.	Frequency	Reading Level	Correct Factor	Result	Limit	Margin	Remark
	[MHz]	[dBuV]	[dB/m]	[dBuV/m]	[dBuV/m]	[dB]	
1	2367.0021	30.78	10.06	40.84	54.00	-13.16	Vertical
2	2390.0000	31.86	10.35	42.21	54.00	-11.79	Vertical

- Note: 1. Peak detector: RBW: 1 MHz, VBW: 3 MHz.
 2. Average detector: RBW: 1 MHz, VBW: 1/T MHz(refer to clause 7.1).
 3. Measurement = Reading Level + Correct Factor,
 Correct Factor = Antenna Factor + Loss (Cable + Attenuator) – Amplifier Gain.
 4. Only the worst case emission was recorded, if it complies with the limit, the other emissions deemed to comply with the limit.

Test Mode	Channel	Polarization	Verdict
11G	HCH	Horizontal	PASS



PK Result:

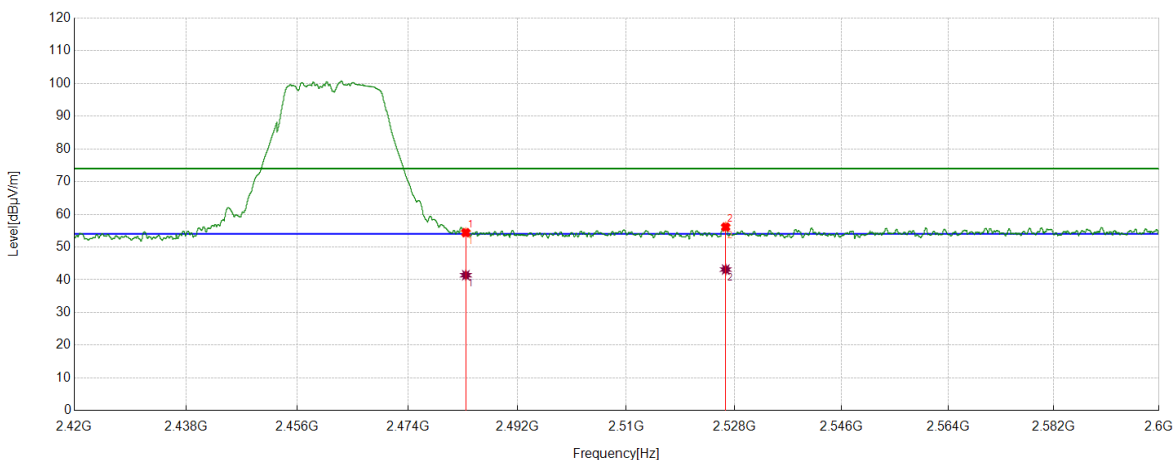
No.	Frequency	Reading Level	Correct Factor	Result	Limit	Margin	Remark
	[MHz]	[dBuV]	[dB/m]	[dBuV/m]	[dBuV/m]	[dB]	
1	2483.5000	44.37	10.64	55.01	74.00	-18.99	Horizontal
2	2509.4937	44.61	11.08	55.69	74.00	-18.31	Horizontal

AV Result:

No.	Frequency	Reading Level	Correct Factor	Result	Limit	Margin	Remark
	[MHz]	[dBuV]	[dB/m]	[dBuV/m]	[dBuV/m]	[dB]	
1	2483.5000	31.37	10.64	42.01	54.00	-11.99	Horizontal
2	2509.4937	30.61	11.08	41.69	54.00	-12.31	Horizontal

- Note: 1. Peak detector: RBW: 1 MHz, VBW: 3 MHz.
 2. Average detector: RBW: 1 MHz, VBW: 1/T MHz(refer to clause 7.1.).
 3. Measurement = Reading Level + Correct Factor,
 Correct Factor = Antenna Factor + Loss (Cable + Attenuator) – Amplifier Gain.
 4. Only the worst case emission was recorded, if it complies with the limit, the other emissions deemed to comply with the limit.

Test Mode	Channel	Polarization	Verdict
11G	HCH	Vertical	PASS



PK Result:

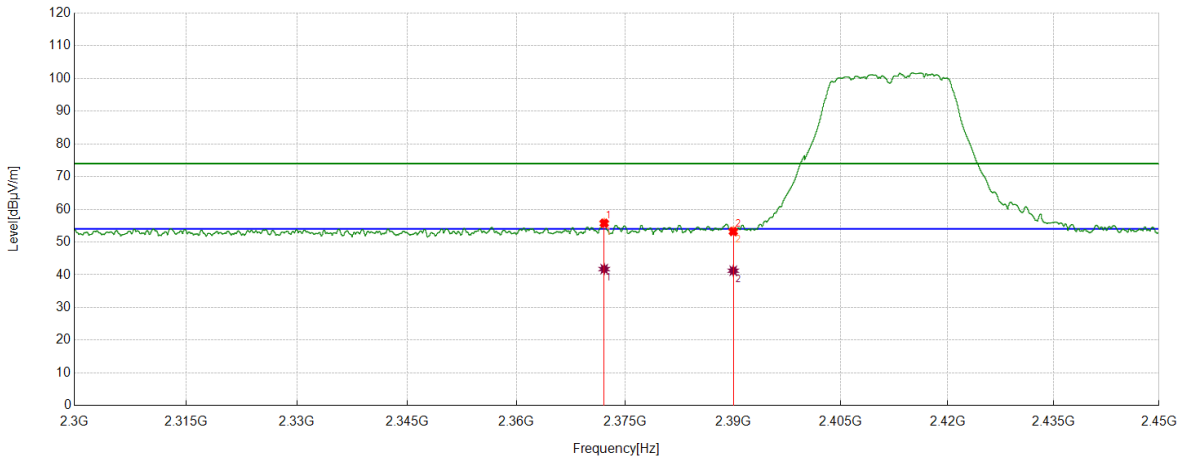
No.	Frequency	Reading Level	Correct Factor	Result	Limit	Margin	Remark
	[MHz]	[dBuV]	[dB/m]	[dBuV/m]	[dBuV/m]	[dB]	
1	2483.5000	43.76	10.64	54.40	74.00	-19.60	Vertical
2	2526.5508	44.91	11.22	56.13	74.00	-17.87	Vertical

AV Result:

No.	Frequency	Reading Level	Correct Factor	Result	Limit	Margin	Remark
	[MHz]	[dBuV]	[dB/m]	[dBuV/m]	[dBuV/m]	[dB]	
1	2483.5000	30.76	10.64	41.40	54.00	-12.60	Vertical
2	2526.5508	31.91	11.22	43.13	54.00	-10.87	Vertical

- Note: 1. Peak detector: RBW: 1 MHz, VBW: 3 MHz.
 2. Average detector: RBW: 1 MHz, VBW: 1/T MHz(refer to clause 7.1.).
 3. Measurement = Reading Level + Correct Factor,
 Correct Factor = Antenna Factor + Loss (Cable + Attenuator) – Amplifier Gain.
 4. Only the worst case emission was recorded, if it complies with the limit, the other emissions deemed to comply with the limit.

Test Mode	Channel	Polarization	Verdict
11N HT20	LCH	Horizontal	PASS



PK Result:

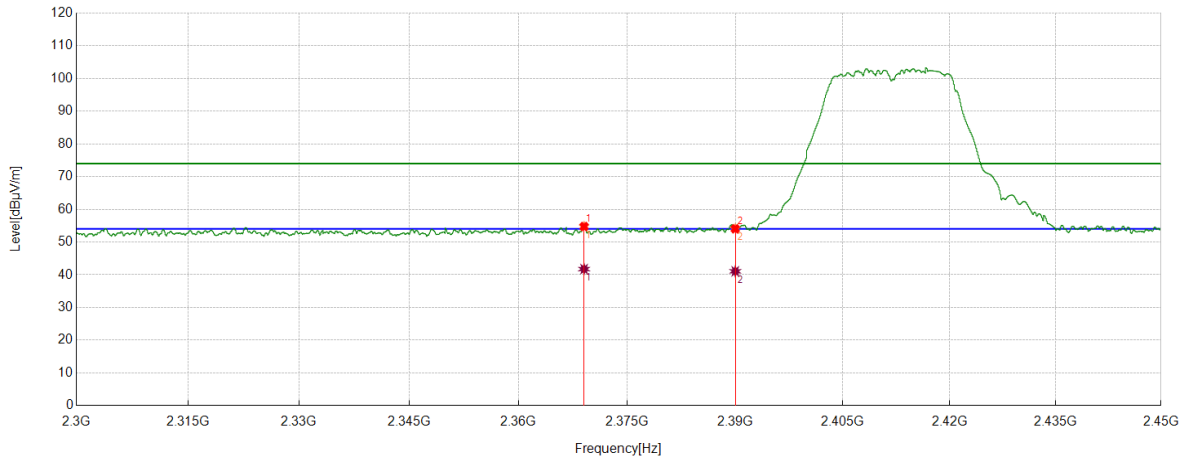
No.	Frequency	Reading Level	Correct Factor	Result	Limit	Margin	Remark
	[MHz]	[dBuV]	[dB/m]	[dBuV/m]	[dBuV/m]	[dB]	
1	2372.1028	45.59	10.16	55.75	74.00	-18.25	Horizontal
2	2390.0000	42.89	10.35	53.24	74.00	-20.76	Horizontal

AV Result:

No.	Frequency	Reading Level	Correct Factor	Result	Limit	Margin	Remark
	[MHz]	[dBuV]	[dB/m]	[dBuV/m]	[dBuV/m]	[dB]	
1	2372.1028	31.59	10.16	41.75	54.00	-12.25	Horizontal
2	2390.0000	30.89	10.35	41.24	54.00	-12.76	Horizontal

- Note: 1. Peak detector: RBW: 1 MHz, VBW: 3 MHz.
 2. Average detector: RBW: 1 MHz, VBW: 1/T MHz(refer to clause 7.1.).
 3. Measurement = Reading Level + Correct Factor,
 Correct Factor = Antenna Factor + Loss (Cable + Attenuator) – Amplifier Gain.
 4. Only the worst case emission was recorded, if it complies with the limit, the other emissions deemed to comply with the limit.

Test Mode	Channel	Polarization	Verdict
11N HT20	LCH	Vertical	PASS



PK Result:

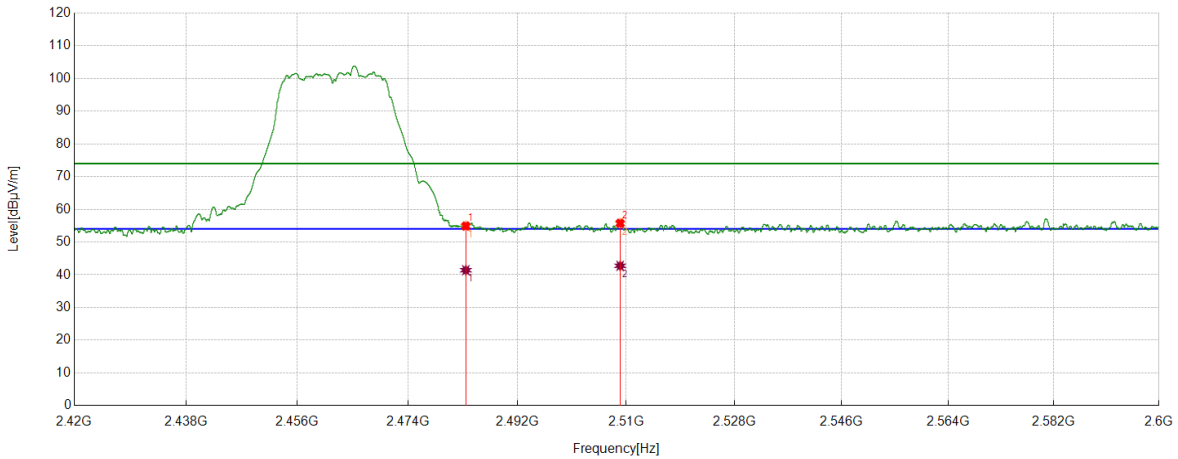
No.	Frequency	Reading Level	Correct Factor	Result	Limit	Margin	Remark
	[MHz]	[dBuV]	[dB/m]	[dBuV/m]	[dBuV/m]	[dB]	
1	2369.0461	44.64	10.10	54.74	74.00	-19.26	Vertical
2	2390.0000	43.71	10.35	54.06	74.00	-19.94	Vertical

AV Result:

No.	Frequency	Reading Level	Correct Factor	Result	Limit	Margin	Remark
	[MHz]	[dBuV]	[dB/m]	[dBuV/m]	[dBuV/m]	[dB]	
1	2369.0461	31.64	10.10	41.74	54.00	-12.26	Vertical
2	2390.0000	30.71	10.35	41.06	54.00	-12.94	Vertical

- Note: 1. Peak detector: RBW: 1 MHz, VBW: 3 MHz.
 2. Average detector: RBW: 1 MHz, VBW: 1/T MHz(refer to clause 7.1.).
 3. Measurement = Reading Level + Correct Factor,
 Correct Factor = Antenna Factor + Loss (Cable + Attenuator) – Amplifier Gain.
 4. Only the worst case emission was recorded, if it complies with the limit, the other emissions deemed to comply with the limit.

Test Mode	Channel	Polarization	Verdict
11N HT20	HCH	Horizontal	PASS



PK Result:

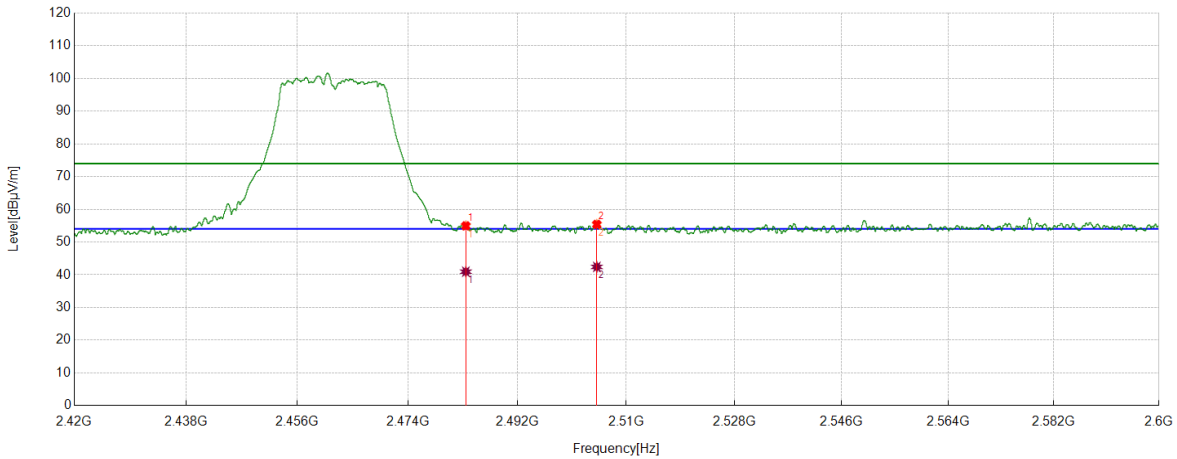
No.	Frequency	Reading Level	Correct Factor	Result	Limit	Margin	Remark
	[MHz]	[dBuV]	[dB/m]	[dBuV/m]	[dBuV/m]	[dB]	
1	2483.5000	44.26	10.64	54.90	74.00	-19.10	Horizontal
2	2508.9761	44.68	11.06	55.74	74.00	-18.26	Horizontal

AV Result:

No.	Frequency	Reading Level	Correct Factor	Result	Limit	Margin	Remark
	[MHz]	[dBuV]	[dB/m]	[dBuV/m]	[dBuV/m]	[dB]	
1	2483.5000	30.76	10.64	41.40	54.00	-12.60	Horizontal
2	2508.9761	31.68	11.06	42.74	54.00	-11.26	Horizontal

- Note: 1. Peak detector: RBW: 1 MHz, VBW: 3 MHz.
 2. Average detector: RBW: 1 MHz, VBW: 1/T MHz(refer to clause 7.1.).
 3. Measurement = Reading Level + Correct Factor,
 Correct Factor = Antenna Factor + Loss (Cable + Attenuator) – Amplifier Gain.
 4. Only the worst case emission was recorded, if it complies with the limit, the other emissions deemed to comply with the limit.

Test Mode	Channel	Polarization	Verdict
11N HT20	HCH	Vertical	PASS



PK Result:

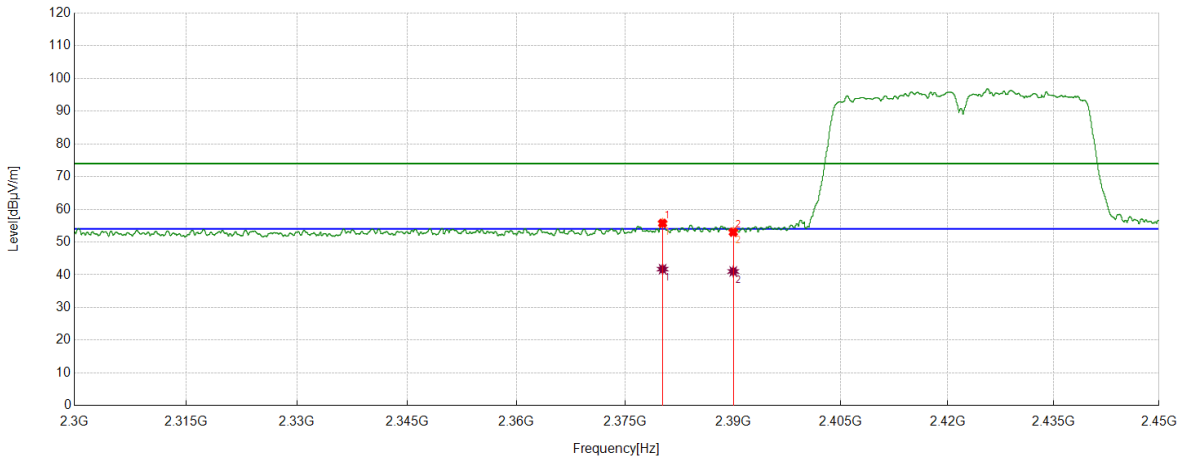
No.	Frequency	Reading Level	Correct Factor	Result	Limit	Margin	Remark
	[MHz]	[dBuV]	[dB/m]	[dBuV/m]	[dBuV/m]	[dB]	
1	2483.5000	44.31	10.64	54.95	74.00	-19.05	Vertical
2	2505.1056	44.49	10.92	55.41	74.00	-18.59	Vertical

AV Result:

No.	Frequency	Reading Level	Correct Factor	Result	Limit	Margin	Remark
	[MHz]	[dBuV]	[dB/m]	[dBuV/m]	[dBuV/m]	[dB]	
1	2483.5000	30.31	10.64	40.95	54.00	-13.05	Vertical
2	2505.1056	31.49	10.92	42.41	54.00	-11.59	Vertical

- Note: 1. Peak detector: RBW: 1 MHz, VBW: 3 MHz.
 2. Average detector: RBW: 1 MHz, VBW: 1/T MHz(refer to clause 7.1.).
 3. Measurement = Reading Level + Correct Factor,
 Correct Factor = Antenna Factor + Loss (Cable + Attenuator) – Amplifier Gain.
 4. Only the worst case emission was recorded, if it complies with the limit, the other emissions deemed to comply with the limit.

Test Mode	Channel	Polarization	Verdict
11N HT40	LCH	Horizontal	PASS



PK Result:

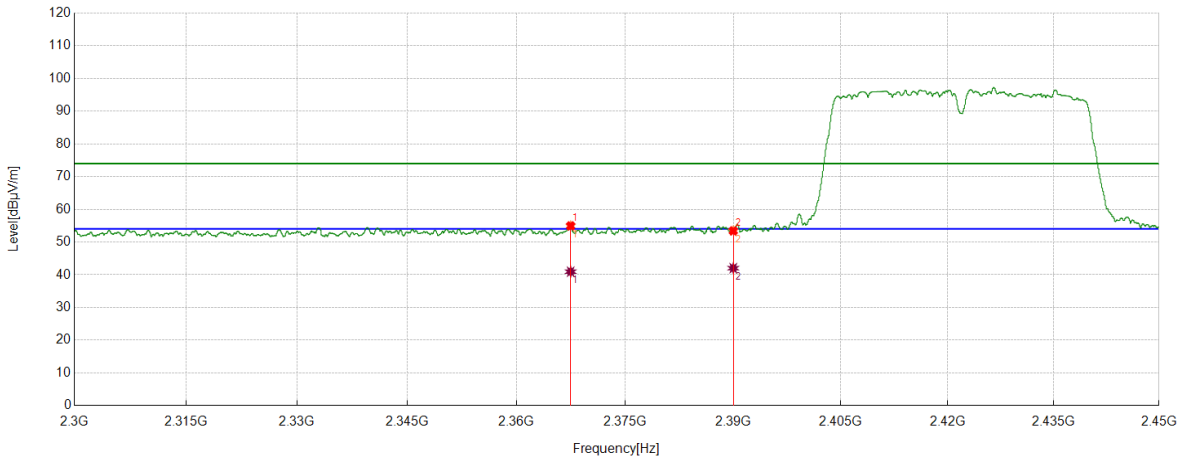
No.	Frequency	Reading Level	Correct Factor	Result	Limit	Margin	Remark
	[MHz]	[dBuV]	[dB/m]	[dBuV/m]	[dBuV/m]	[dB]	
1	2380.185	45.43	10.30	55.73	74.00	-18.27	Horizontal
2	2390.0000	42.68	10.35	53.03	74.00	-20.97	Horizontal

AV Result:

No.	Frequency	Reading Level	Correct Factor	Result	Limit	Margin	Remark
	[MHz]	[dBuV]	[dB/m]	[dBuV/m]	[dBuV/m]	[dB]	
1	2380.185	31.43	10.30	41.73	54.00	-12.27	Horizontal
2	2390.0000	30.68	10.35	41.03	54.00	-12.97	Horizontal

- Note: 1. Peak detector: RBW: 1 MHz, VBW: 3 MHz.
 2. Average detector: RBW: 1 MHz, VBW: 1/T MHz(refer to clause 7.1.).
 3. Measurement = Reading Level + Correct Factor,
 Correct Factor = Antenna Factor + Loss (Cable + Attenuator) – Amplifier Gain.
 4. Only the worst case emission was recorded, if it complies with the limit, the other emissions deemed to comply with the limit.

Test Mode	Channel	Polarization	Verdict
11N HT40	LCH	Vertical	PASS



PK Result:

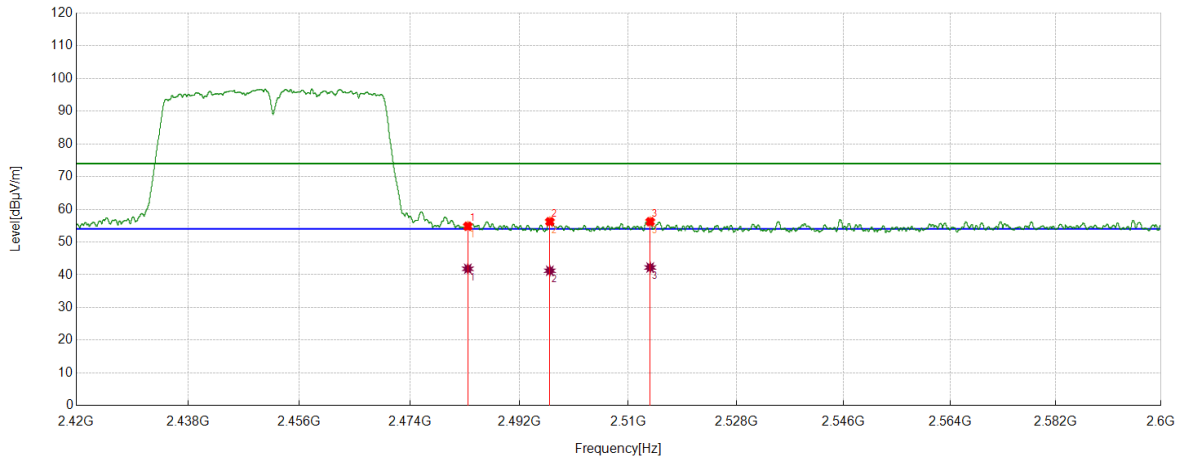
No.	Frequency	Reading Level	Correct Factor	Result	Limit	Margin	Remark
	[MHz]	[dBuV]	[dB/m]	[dBuV/m]	[dBuV/m]	[dB]	
1	2367.4709	44.88	10.07	54.95	74.00	-19.05	Vertical
2	2390.0000	43.07	10.35	53.42	74.00	-20.58	Vertical

AV Result:

No.	Frequency	Reading Level	Correct Factor	Result	Limit	Margin	Remark
	[MHz]	[dBuV]	[dB/m]	[dBuV/m]	[dBuV/m]	[dB]	
1	2367.4709	30.88	10.07	40.95	54.00	-13.05	Vertical
2	2390.0000	31.67	10.35	42.02	54.00	-11.98	Vertical

- Note: 1. Peak detector: RBW: 1 MHz, VBW: 3 MHz.
 2. Average detector: RBW: 1 MHz, VBW: 1/T MHz(refer to clause 7.1.).
 3. Measurement = Reading Level + Correct Factor,
 Correct Factor = Antenna Factor + Loss (Cable + Attenuator) – Amplifier Gain.
 4. Only the worst case emission was recorded, if it complies with the limit, the other emissions deemed to comply with the limit.

Test Mode	Channel	Polarization	Verdict
11N HT40	HCH	Horizontal	PASS



PK Result:

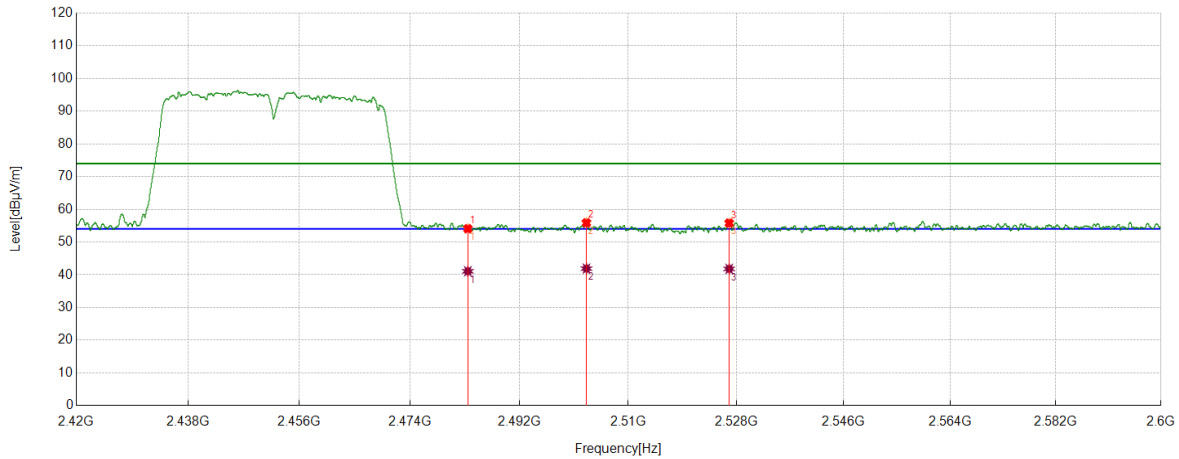
No.	Frequency	Reading Level	Correct Factor	Result	Limit	Margin	Remark
	[MHz]	[dBuV]	[dB/m]	[dBuV/m]	[dBuV/m]	[dB]	
1	2483.5000	44.19	10.64	54.83	74.00	-19.17	Horizontal
2	2497.0046	45.48	10.75	56.23	74.00	-17.77	Horizontal
3	2513.6342	45.16	11.07	56.23	74.00	-17.77	Horizontal

AV Result:

No.	Frequency	Reading Level	Correct Factor	Result	Limit	Margin	Remark
	[MHz]	[dBuV]	[dB/m]	[dBuV/m]	[dBuV/m]	[dB]	
1	2483.5000	31.19	10.64	41.83	54.00	-12.17	Horizontal
2	2497.0046	30.48	10.75	41.23	54.00	-12.77	Horizontal
3	2513.6342	31.16	11.07	42.23	54.00	-11.77	Horizontal

- Note: 1. Peak detector: RBW: 1 MHz, VBW: 3 MHz.
 2. Average detector: RBW: 1 MHz, VBW: 1/T MHz(refer to clause 7.1.).
 3. Measurement = Reading Level + Correct Factor,
 Correct Factor = Antenna Factor + Loss (Cable + Attenuator) – Amplifier Gain.
 4. Only the worst case emission was recorded, if it complies with the limit, the other emissions deemed to comply with the limit.

Test Mode	Channel	Polarization	Verdict
11N HT40	HCH	Vertical	PASS



PK Result:

No.	Frequency	Reading Level	Correct Factor	Result	Limit	Margin	Remark
	[MHz]	[dBuV]	[dB/m]	[dBuV/m]	[dBuV/m]	[dB]	
1	2483.5000	43.43	10.64	54.07	74.00	-19.93	Vertical
2	2503.0579	45.03	10.85	55.88	74.00	-18.12	Vertical
3	2526.7984	44.57	11.23	55.80	74.00	-18.20	Vertical

AV Result:

No.	Frequency	Reading Level	Correct Factor	Result	Limit	Margin	Remark
	[MHz]	[dBuV]	[dB/m]	[dBuV/m]	[dBuV/m]	[dB]	
1	2483.5000	30.43	10.64	41.07	54.00	-12.93	Vertical
2	2503.0579	31.03	10.85	41.88	54.00	-12.12	Vertical
3	2526.7984	30.57	11.23	41.80	54.00	-12.20	Vertical

- Note: 1. Peak detector: RBW: 1 MHz, VBW: 3 MHz.
 2. Average detector: RBW: 1 MHz, VBW: 1/T MHz(refer to clause 7.1.).
 3. Measurement = Reading Level + Correct Factor,
 Correct Factor = Antenna Factor + Loss (Cable + Attenuator) – Amplifier Gain.
 4. Only the worst case emission was recorded, if it complies with the limit, the other emissions deemed to comply with the limit.

8.4. SPURIOUS EMISSIONS

TEST RESULTS TABLE

1) For 1GHz~18GHz

Test Mode	Channel	Puw(dBm)	Verdict
11B	LCH	<Limit	PASS
	MCH	<Limit	PASS
	HCH	<Limit	PASS
11G	LCH	<Limit	PASS
	MCH	<Limit	PASS
	HCH	<Limit	PASS
11N HT20	LCH	<Limit	PASS
	MCH	<Limit	PASS
	HCH	<Limit	PASS
11N HT40	LCH	<Limit	PASS
	MCH	<Limit	PASS
	HCH	<Limit	PASS

2) For 9kHz~30MHz

Test Mode	Channel	Puw(dBm)	Verdict
11B	MCH	<Limit	PASS

Remark:

1) Through pre-testing all the test modes and test channels, but only the data of the worst case is included in this test report.

3) For 30MHz~1GHz

Test Mode	Channel	Puw(dBm)	Verdict
11B	MCH	<Limit	PASS

Remark:

1) Through pre-testing all the test modes and test channels, but only the data of the worst case is included in this test report.

4) For 18GHz~26.5GHz

Test Mode	Channel	Puw(dBm)	Verdict
11B	MCH	<Limit	PASS

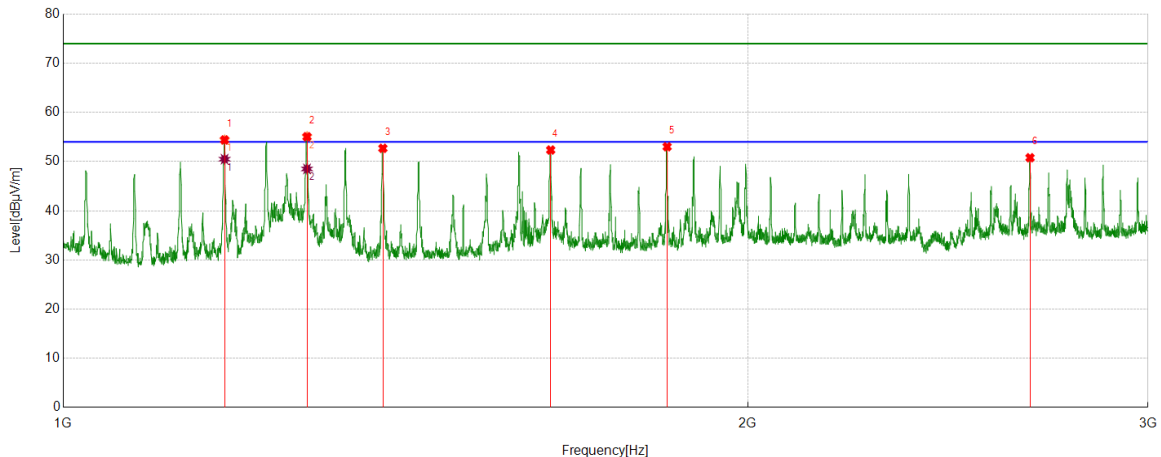
Remark:

1) Through pre-testing all the test modes and test channels, but only the data of the worst case is included in this test report.

Part 1: 1GHz~3GHz

HARMONICS AND SPURIOUS EMISSIONS

Test Mode	Channel	Polarization	Verdict
11B	LCH	Horizontal	PASS



PK Result:

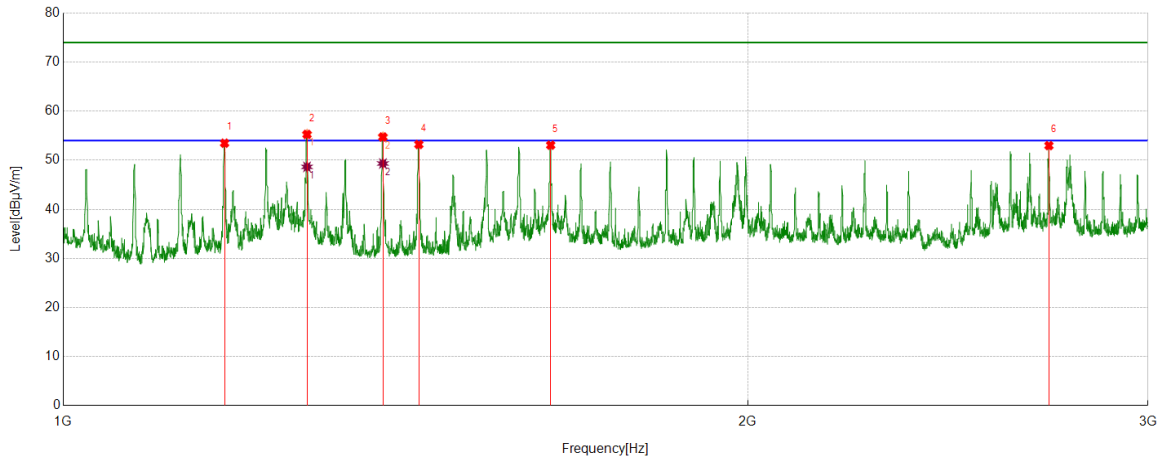
No.	Frequency	Reading Level	Correct Factor	Result	Limit	Margin	Remark
	[MHz]	[dBuV]	[dB/m]	[dBuV/m]	[dBuV/m]	[dB]	
1	1177.5222	76.14	-21.73	54.41	74.00	-19.59	Horizontal
2	1280.0350	75.89	-20.83	55.06	74.00	-18.94	Horizontal
3	1382.2978	73.28	-20.58	52.70	74.00	-21.30	Horizontal
4	1638.3298	70.77	-18.42	52.35	74.00	-21.65	Horizontal
5	1843.3554	70.23	-17.21	53.02	74.00	-20.98	Horizontal
6	2662.2078	64.01	-13.23	50.78	74.00	-23.22	Horizontal

AV Result:

No.	Frequency	Reading Level	Correct Factor	Result	Limit	Margin	Remark
	[MHz]	[dBuV]	[dB/m]	[dBuV/m]	[dBuV/m]	[dB]	
1	1177.5222	72.22	-21.73	50.49	54.00	-3.51	Horizontal
2	1280.0350	69.34	-20.83	48.51	54.00	-5.49	Horizontal

- Note: 1. Measurement = Reading Level + Correct Factor,
Correct Factor = Antenna Factor + Loss (Cable + Filter) – Amplifier Gain.
2. If Peak Result complies with AV limit, AV Result is deemed to comply with AV limit.
3. Test setup: RBW: 1 MHz, VBW: 3 MHz, Sweep time: auto.
4. Peak: Peak detector.
5. For below 3GHz part, filter losses were only considered in the spurious frequency bands and the authorized band was not corrected for Band Reject Filter losses.
6. Only the worst case emission was recorded, if it complies with the limit, the other emissions deemed to comply with the limit.

Test Mode	Channel	Polarization	Verdict
11B	LCH	Vertical	PASS



PK Result:

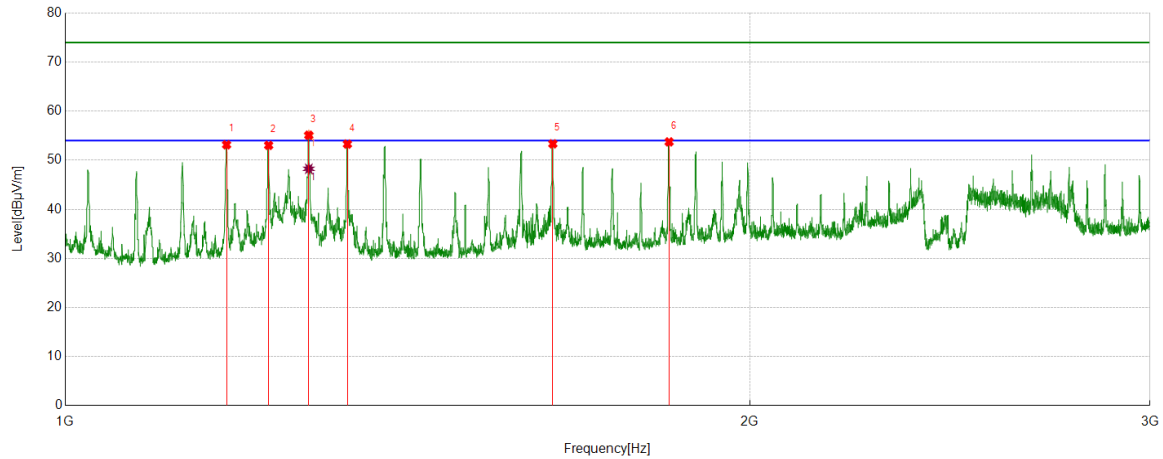
No.	Frequency	Reading Level	Correct Factor	Result	Limit	Margin	Remark
	[MHz]	[dBuV]	[dB/m]	[dBuV/m]	[dBuV/m]	[dB]	
1	1177.5222	75.21	-21.73	53.48	74.00	-20.52	Vertical
2	1280.0350	76.10	-20.83	55.27	74.00	-18.73	Vertical
3	1382.2978	75.32	-20.58	54.74	74.00	-19.26	Vertical
4	1433.5542	73.12	-19.91	53.21	74.00	-20.79	Vertical
5	1638.3298	71.49	-18.42	53.07	74.00	-20.93	Vertical
6	2713.7142	65.59	-12.61	52.98	74.00	-21.02	Vertical

AV Result:

No.	Frequency	Reading Level	Correct Factor	Result	Limit	Margin	Remark
	[MHz]	[dBuV]	[dB/m]	[dBuV/m]	[dBuV/m]	[dB]	
1	1280.035	69.48	-20.83	48.65	54.00	-5.35	Vertical
2	1382.2978	69.91	-20.58	49.33	54.00	-4.67	Vertical

- Note: 1. Measurement = Reading Level + Correct Factor,
Correct Factor = Antenna Factor + Loss (Cable + Filter) – Amplifier Gain.
- If Peak Result complies with AV limit, AV Result is deemed to comply with AV limit.
 - Test setup: RBW: 1 MHz, VBW: 3 MHz, Sweep time: auto.
 - Peak: Peak detector.
 - For below 3GHz part, filter losses were only considered in the spurious frequency bands and the authorized band was not corrected for Band Reject Filter losses.
 - Only the worst case emission was recorded, if it complies with the limit, the other emissions deemed to comply with the limit.

Test Mode	Channel	Polarization	Verdict
11B	MCH	Horizontal	PASS



PK Result:

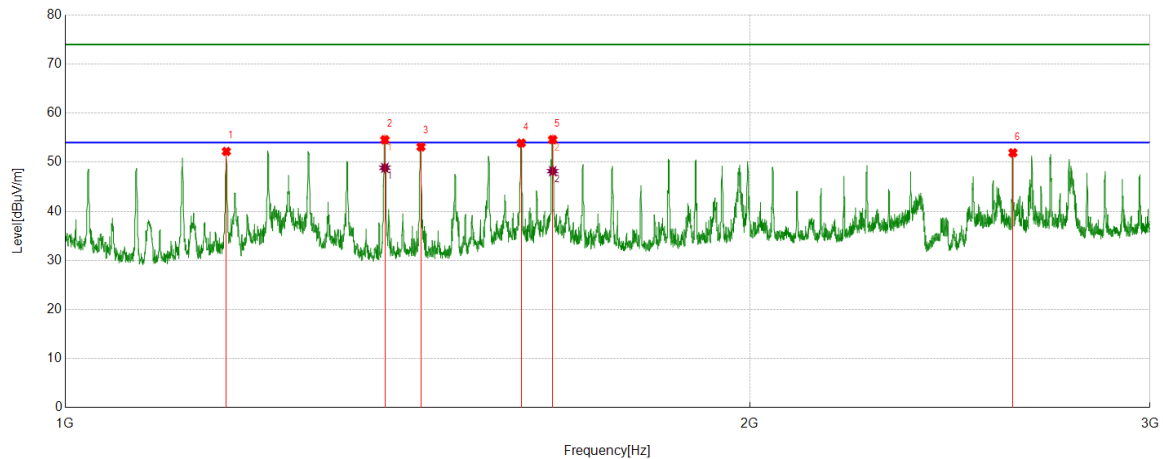
No.	Frequency	Reading Level	Correct Factor	Result	Limit	Margin	Remark
	[MHz]	[dBuV]	[dB/m]	[dBuV/m]	[dBuV/m]	[dB]	
1	1177.5222	74.88	-21.73	53.15	74.00	-20.85	Horizontal
2	1228.7786	74.11	-21.07	53.04	74.00	-20.96	Horizontal
3	1279.785	75.93	-20.83	55.10	74.00	-18.90	Horizontal
4	1330.7913	73.87	-20.58	53.29	74.00	-20.71	Horizontal
5	1638.5798	71.75	-18.41	53.34	74.00	-20.66	Horizontal
6	1843.3554	70.95	-17.21	53.74	74.00	-20.26	Horizontal

AV Result:

No.	Frequency	Reading Level	Correct Factor	Result	Limit	Margin	Remark
	[MHz]	[dBuV]	[dB/m]	[dBuV/m]	[dBuV/m]	[dB]	
1	1279.785	69.09	-20.83	48.26	54.00	-5.74	Horizontal

- Note: 1. Measurement = Reading Level + Correct Factor,
Correct Factor = Antenna Factor + Loss (Cable + Filter) – Amplifier Gain.
2. If Peak Result complies with AV limit, AV Result is deemed to comply with AV limit.
3. Test setup: RBW: 1 MHz, VBW: 3 MHz, Sweep time: auto.
4. Peak: Peak detector.
5. For below 3GHz part, filter losses were only considered in the spurious frequency bands and the authorized band was not corrected for Band Reject Filter losses.
6. Only the worst case emission was recorded, if it complies with the limit, the other emissions deemed to comply with the limit.

Test Mode	Channel	Polarization	Verdict
11B	MCH	Vertical	PASS



PK Result:

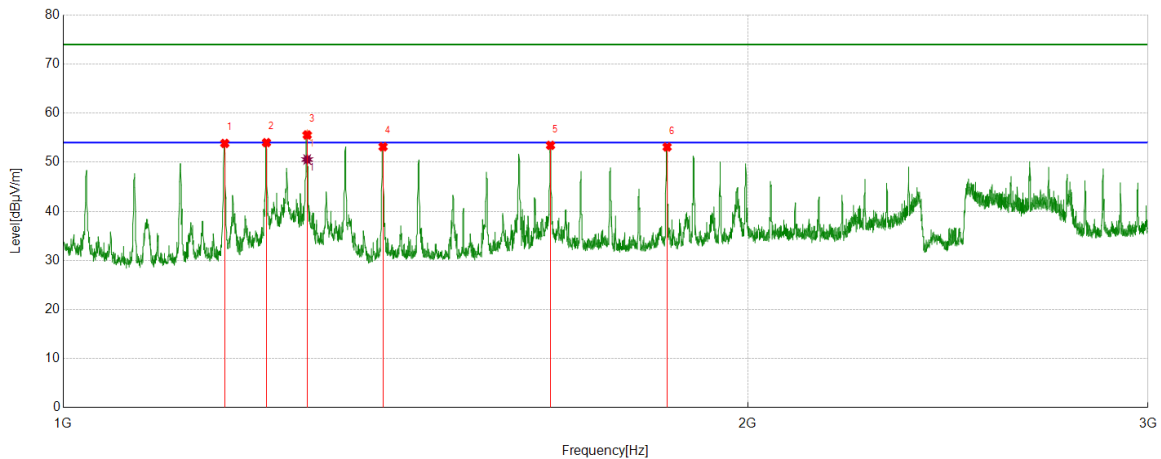
No.	Frequency	Reading Level	Correct Factor	Result	Limit	Margin	Remark
	[MHz]	[dBuV]	[dB/m]	[dBuV/m]	[dBuV/m]	[dB]	
1	1177.2722	73.93	-21.73	52.20	74.00	-21.80	Vertical
2	1382.2978	75.16	-20.58	54.58	74.00	-19.42	Vertical
3	1433.8042	73.03	-19.90	53.13	74.00	-20.87	Vertical
4	1587.0734	72.74	-18.83	53.91	74.00	-20.09	Vertical
5	1638.3298	73.03	-18.42	54.61	74.00	-19.39	Vertical
6	2611.2014	65.13	-13.20	51.93	74.00	-22.07	Vertical

AV Result:

No.	Frequency	Reading Level	Correct Factor	Result	Limit	Margin	Remark
	[MHz]	[dBuV]	[dB/m]	[dBuV/m]	[dBuV/m]	[dB]	
1	1382.2978	69.45	-20.58	48.87	54.00	-5.13	Vertical
2	1638.3298	66.61	-18.42	48.19	54.00	-5.81	Vertical

- Note: 1. Measurement = Reading Level + Correct Factor,
Correct Factor = Antenna Factor + Loss (Cable + Filter) – Amplifier Gain.
2. If Peak Result complies with AV limit, AV Result is deemed to comply with AV limit.
3. Test setup: RBW: 1 MHz, VBW: 3 MHz, Sweep time: auto.
4. Peak: Peak detector.
5. For below 3GHz part, filter losses were only considered in the spurious frequency bands and the authorized band was not corrected for Band Reject Filter losses.
6. Only the worst case emission was recorded, if it complies with the limit, the other emissions deemed to comply with the limit.

Test Mode	Channel	Polarization	Verdict
11B	HCH	Horizontal	PASS



PK Result:

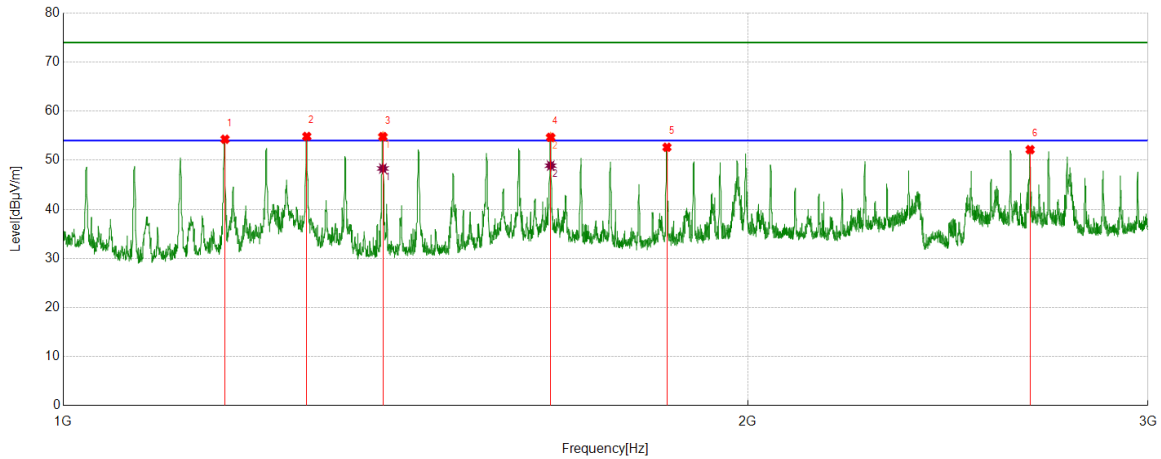
No.	Frequency	Reading Level	Correct Factor	Result	Limit	Margin	Remark
	[MHz]	[dBuV]	[dB/m]	[dBuV/m]	[dBuV/m]	[dB]	
1	1177.7722	75.58	-21.74	53.84	74.00	-20.16	Horizontal
2	1228.5286	75.08	-21.08	54.00	74.00	-20.00	Horizontal
3	1280.2850	76.38	-20.82	55.56	74.00	-18.44	Horizontal
4	1382.5478	73.73	-20.58	53.15	74.00	-20.85	Horizontal
5	1638.0798	71.86	-18.42	53.44	74.00	-20.56	Horizontal
6	1843.3554	70.31	-17.21	53.10	74.00	-20.90	Horizontal

AV Result:

No.	Frequency	Reading Level	Correct Factor	Result	Limit	Margin	Remark
	[MHz]	[dBuV]	[dB/m]	[dBuV/m]	[dBuV/m]	[dB]	
1	1280.285	71.38	-20.82	50.56	54.00	-3.44	Horizontal

- Note: 1. Measurement = Reading Level + Correct Factor,
Correct Factor = Antenna Factor + Loss (Cable + Filter) – Amplifier Gain.
- If Peak Result complies with AV limit, AV Result is deemed to comply with AV limit.
 - Test setup: RBW: 1 MHz, VBW: 3 MHz, Sweep time: auto.
 - Peak: Peak detector.
 - For below 3GHz part, filter losses were only considered in the spurious frequency bands and the authorized band was not corrected for Band Reject Filter losses.
 - Only the worst case emission was recorded, if it complies with the limit, the other emissions deemed to comply with the limit.

Test Mode	Channel	Polarization	Verdict
11B	HCH	Vertical	PASS



PK Result:

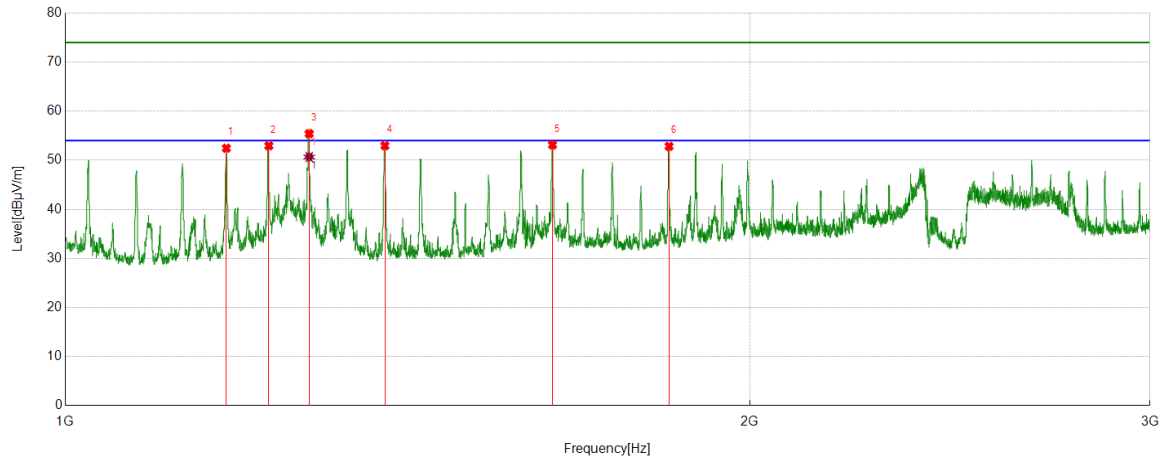
No.	Frequency	Reading Level	Correct Factor	Result	Limit	Margin	Remark
	[MHz]	[dBuV]	[dB/m]	[dBuV/m]	[dBuV/m]	[dB]	
1	1178.0223	76.02	-21.74	54.28	74.00	-20.72	Vertical
2	1279.785	75.68	-20.83	54.85	74.00	-20.65	Vertical
3	1382.2978	75.39	-20.58	54.81	74.00	-19.19	Vertical
4	1638.3298	73.09	-18.42	54.67	74.00	-19.33	Vertical
5	1843.1054	69.85	-17.21	52.64	74.00	-21.36	Vertical
6	2662.4578	65.38	-13.23	52.15	74.00	-21.85	Vertical

AV Result:

No.	Frequency	Reading Level	Correct Factor	Result	Limit	Margin	Remark
	[MHz]	[dBuV]	[dB/m]	[dBuV/m]	[dBuV/m]	[dB]	
1	1382.2978	68.90	-20.58	48.32	54.00	-5.68	Vertical
2	1638.3298	67.32	-18.42	48.90	54.00	-5.10	Vertical

- Note: 1. Measurement = Reading Level + Correct Factor,
Correct Factor = Antenna Factor + Loss (Cable + Filter) – Amplifier Gain.
- If Peak Result complies with AV limit, AV Result is deemed to comply with AV limit.
 - Test setup: RBW: 1 MHz, VBW: 3 MHz, Sweep time: auto.
 - Peak: Peak detector.
 - For below 3GHz part, filter losses were only considered in the spurious frequency bands and the authorized band was not corrected for Band Reject Filter losses.
 - Only the worst case emission was recorded, if it complies with the limit, the other emissions deemed to comply with the limit.

Test Mode	Channel	Polarization	Verdict
11G	LCH	Horizontal	PASS



PK Result:

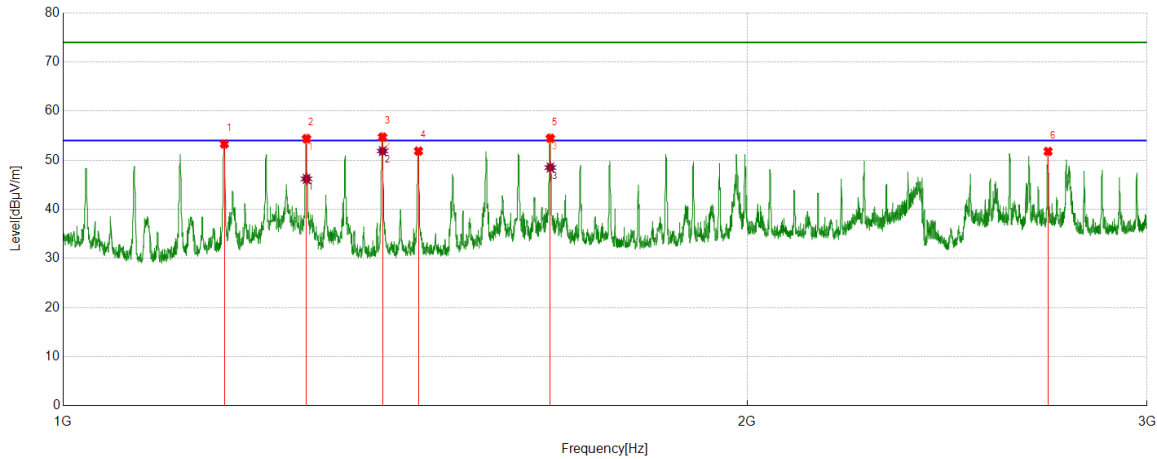
No.	Frequency	Reading Level	Correct Factor	Result	Limit	Margin	Remark
	[MHz]	[dBuV]	[dB/m]	[dBuV/m]	[dBuV/m]	[dB]	
1	1177.2722	74.18	-21.73	52.45	74.00	-21.55	Horizontal
2	1229.0286	74.00	-21.06	52.94	74.00	-21.06	Horizontal
3	1280.285	76.24	-20.82	55.42	74.00	-18.58	Horizontal
4	1382.2978	73.54	-20.58	52.96	74.00	-21.04	Horizontal
5	1638.0798	71.54	-18.42	53.12	74.00	-20.88	Horizontal
6	1843.3554	70.04	-17.21	52.83	74.00	-21.17	Horizontal

AV Result:

No.	Frequency	Reading Level	Correct Factor	Result	Limit	Margin	Remark
	[MHz]	[dBuV]	[dB/m]	[dBuV/m]	[dBuV/m]	[dB]	
1	1280.285	71.48	-20.82	50.66	54.00	-3.34	Horizontal

- Note: 1. Measurement = Reading Level + Correct Factor,
Correct Factor = Antenna Factor + Loss (Cable + Filter) – Amplifier Gain.
- If Peak Result complies with AV limit, AV Result is deemed to comply with AV limit.
 - Test setup: RBW: 1 MHz, VBW: 3 MHz, Sweep time: auto.
 - Peak: Peak detector.
 - For below 3GHz part, filter losses were only considered in the spurious frequency bands and the authorized band was not corrected for Band Reject Filter losses.
 - Only the worst case emission was recorded, if it complies with the limit, the other emissions deemed to comply with the limit.

Test Mode	Channel	Polarization	Verdict
11G	LCH	Vertical	PASS



PK Result:

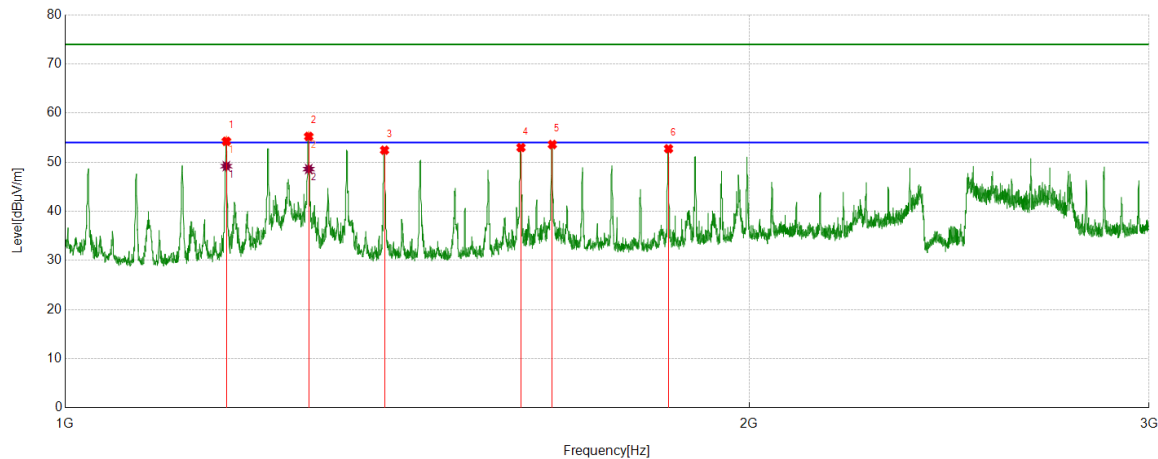
No.	Frequency	Reading Level	Correct Factor	Result	Limit	Margin	Remark
	[MHz]	[dBuV]	[dB/m]	[dBuV/m]	[dBuV/m]	[dB]	
1	1177.5222	75.04	-21.73	53.31	74.00	-20.69	Vertical
2	1279.7850	75.22	-20.83	54.39	74.00	-19.61	Vertical
3	1382.2978	75.30	-20.58	54.72	74.00	-19.28	Vertical
4	1433.5542	71.78	-19.91	51.87	74.00	-22.13	Vertical
5	1638.5798	72.89	-18.41	54.48	74.00	-19.52	Vertical
6	2713.7142	64.41	-12.61	51.80	74.00	-22.20	Vertical

AV Result:

No.	Frequency	Reading Level	Correct Factor	Result	Limit	Margin	Remark
	[MHz]	[dBuV]	[dB/m]	[dBuV/m]	[dBuV/m]	[dB]	
1	1279.785	67.04	-20.83	46.21	54.00	-7.79	Vertical
2	1382.2978	72.45	-20.58	51.87	54.00	-2.13	Vertical
3	1638.5798	66.93	-18.41	48.52	54.00	-5.48	Vertical

- Note: 1. Measurement = Reading Level + Correct Factor,
Correct Factor = Antenna Factor + Loss (Cable + Filter) – Amplifier Gain.
2. If Peak Result complies with AV limit, AV Result is deemed to comply with AV limit.
3. Test setup: RBW: 1 MHz, VBW: 3 MHz, Sweep time: auto.
4. Peak: Peak detector.
5. For below 3GHz part, filter losses were only considered in the spurious frequency bands and the authorized band was not corrected for Band Reject Filter losses.
6. Only the worst case emission was recorded, if it complies with the limit, the other emissions deemed to comply with the limit.

Test Mode	Channel	Polarization	Verdict
11G	MCH	Horizontal	PASS



PK Result:

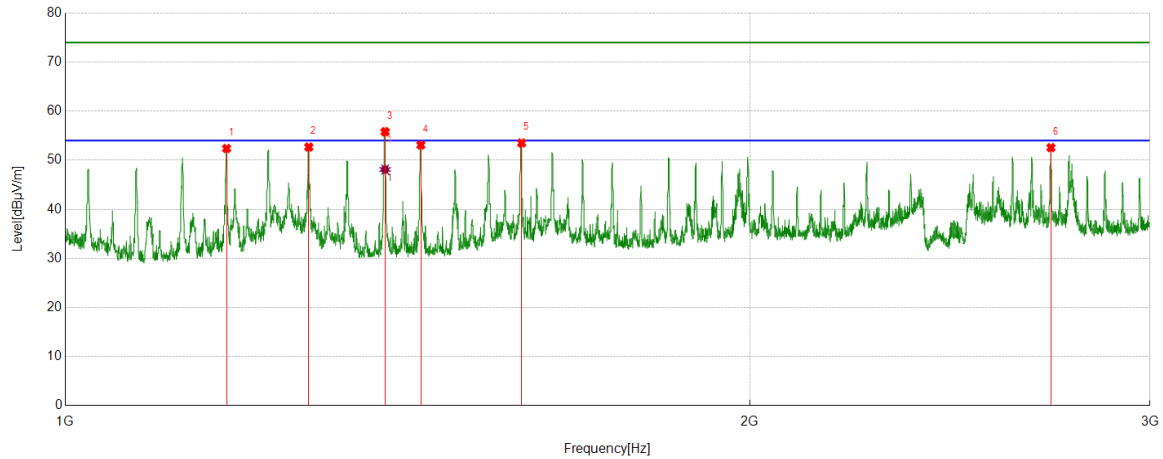
No.	Frequency	Reading Level	Correct Factor	Result	Limit	Margin	Remark
	[MHz]	[dBuV]	[dB/m]	[dBuV/m]	[dBuV/m]	[dB]	
1	1177.5222	75.99	-21.73	54.26	74.00	-19.74	Horizontal
2	1280.035	76.08	-20.83	55.25	74.00	-18.75	Horizontal
3	1382.2978	73.04	-20.58	52.46	74.00	-21.54	Horizontal
4	1587.3234	71.80	-18.81	52.99	74.00	-21.01	Horizontal
5	1638.5798	72.02	-18.41	53.61	74.00	-20.39	Horizontal
6	1843.3554	69.96	-17.21	52.75	74.00	-21.25	Horizontal

AV Result:

No.	Frequency	Reading Level	Correct Factor	Result	Limit	Margin	Remark
	[MHz]	[dBuV]	[dB/m]	[dBuV/m]	[dBuV/m]	[dB]	
1	1177.5222	70.94	-21.73	49.21	54.00	-4.79	Horizontal
2	1280.035	69.44	-20.83	48.61	54.00	-5.39	Horizontal

- Note: 1. Measurement = Reading Level + Correct Factor,
Correct Factor = Antenna Factor + Loss (Cable + Filter) – Amplifier Gain.
2. If Peak Result complies with AV limit, AV Result is deemed to comply with AV limit.
3. Test setup: RBW: 1 MHz, VBW: 3 MHz, Sweep time: auto.
4. Peak: Peak detector.
5. For below 3GHz part, filter losses were only considered in the spurious frequency bands and the authorized band was not corrected for Band Reject Filter losses.
6. Only the worst case emission was recorded, if it complies with the limit, the other emissions deemed to comply with the limit.

Test Mode	Channel	Polarization	Verdict
11G	MCH	Vertical	PASS



PK Result:

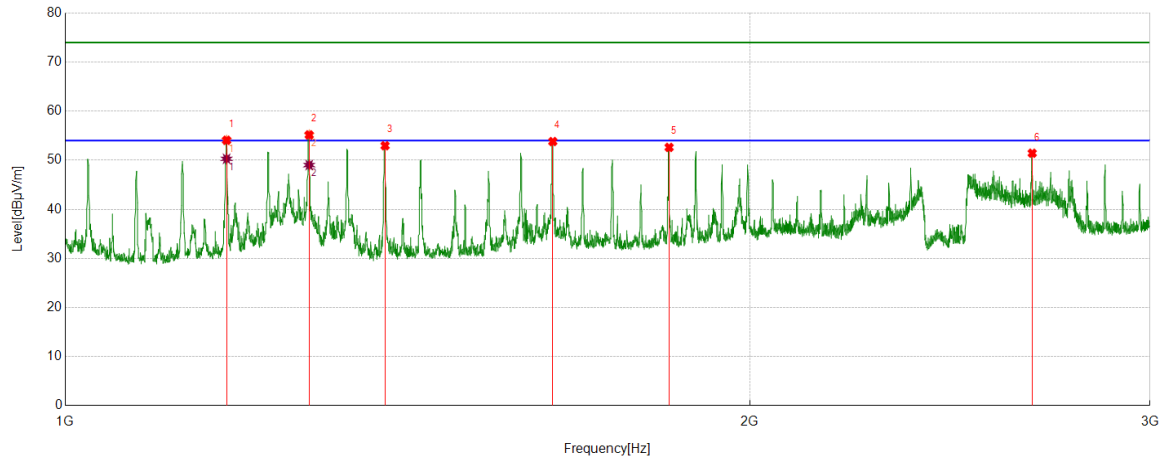
No.	Frequency	Reading Level	Correct Factor	Result	Limit	Margin	Remark
	[MHz]	[dBuV]	[dB/m]	[dBuV/m]	[dBuV/m]	[dB]	
1	1177.5222	74.12	-21.73	52.39	74.00	-21.61	Vertical
2	1279.785	73.52	-20.83	52.69	74.00	-21.31	Vertical
3	1382.5478	76.38	-20.58	55.80	74.00	-18.20	Vertical
4	1433.5542	73.01	-19.91	53.10	74.00	-20.90	Vertical
5	1587.5734	72.33	-18.81	53.52	74.00	-20.48	Vertical
6	2713.7142	65.18	-12.61	52.57	74.00	-21.43	Vertical

AV Result:

No.	Frequency	Reading Level	Correct Factor	Result	Limit	Margin	Remark
	[MHz]	[dBuV]	[dB/m]	[dBuV/m]	[dBuV/m]	[dB]	
1	1382.5478	68.70	-20.58	48.12	54.00	-5.88	Vertical

- Note: 1. Measurement = Reading Level + Correct Factor,
Correct Factor = Antenna Factor + Loss (Cable + Filter) – Amplifier Gain.
2. If Peak Result complies with AV limit, AV Result is deemed to comply with AV limit.
3. Test setup: RBW: 1 MHz, VBW: 3 MHz, Sweep time: auto.
4. Peak: Peak detector.
5. For below 3GHz part, filter losses were only considered in the spurious frequency bands and the authorized band was not corrected for Band Reject Filter losses.
6. Only the worst case emission was recorded, if it complies with the limit, the other emissions deemed to comply with the limit.

Test Mode	Channel	Polarization	Verdict
11G	HCH	Horizontal	PASS



PK Result:

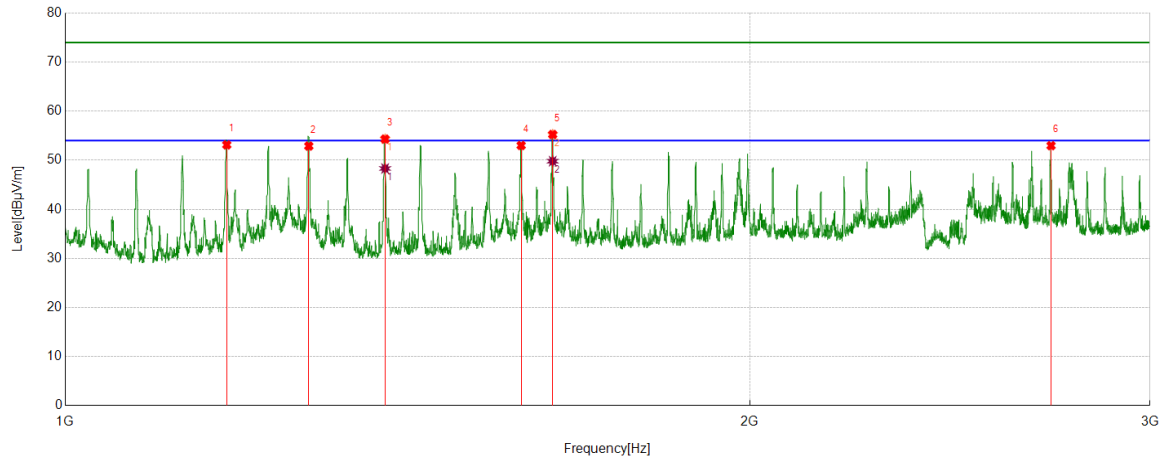
No.	Frequency	Reading Level	Correct Factor	Result	Limit	Margin	Remark
	[MHz]	[dBuV]	[dB/m]	[dBuV/m]	[dBuV/m]	[dB]	
1	1177.5222	75.80	-21.73	54.07	74.00	-19.93	Horizontal
2	1280.285	75.98	-20.82	55.16	74.00	-18.84	Horizontal
3	1382.5478	73.54	-20.58	52.96	74.00	-21.04	Horizontal
4	1638.5798	72.22	-18.41	53.81	74.00	-20.19	Horizontal
5	1843.3554	69.83	-17.21	52.62	74.00	-21.38	Horizontal
6	2662.7078	64.67	-13.24	51.43	74.00	-22.57	Horizontal

AV Result:

No.	Frequency	Reading Level	Correct Factor	Result	Limit	Margin	Remark
	[MHz]	[dBuV]	[dB/m]	[dBuV/m]	[dBuV/m]	[dB]	
1	1177.5222	72.02	-21.73	50.29	54.00	-3.71	Horizontal
2	1280.285	69.84	-20.82	49.02	54.00	-4.98	Horizontal

- Note: 1. Measurement = Reading Level + Correct Factor,
Correct Factor = Antenna Factor + Loss (Cable + Filter) – Amplifier Gain.
2. If Peak Result complies with AV limit, AV Result is deemed to comply with AV limit.
3. Test setup: RBW: 1 MHz, VBW: 3 MHz, Sweep time: auto.
4. Peak: Peak detector.
5. For below 3GHz part, filter losses were only considered in the spurious frequency bands and the authorized band was not corrected for Band Reject Filter losses.
6. Only the worst case emission was recorded, if it complies with the limit, the other emissions deemed to comply with the limit.

Test Mode	Channel	Polarization	Verdict
11G	HCH	Vertical	PASS



PK Result:

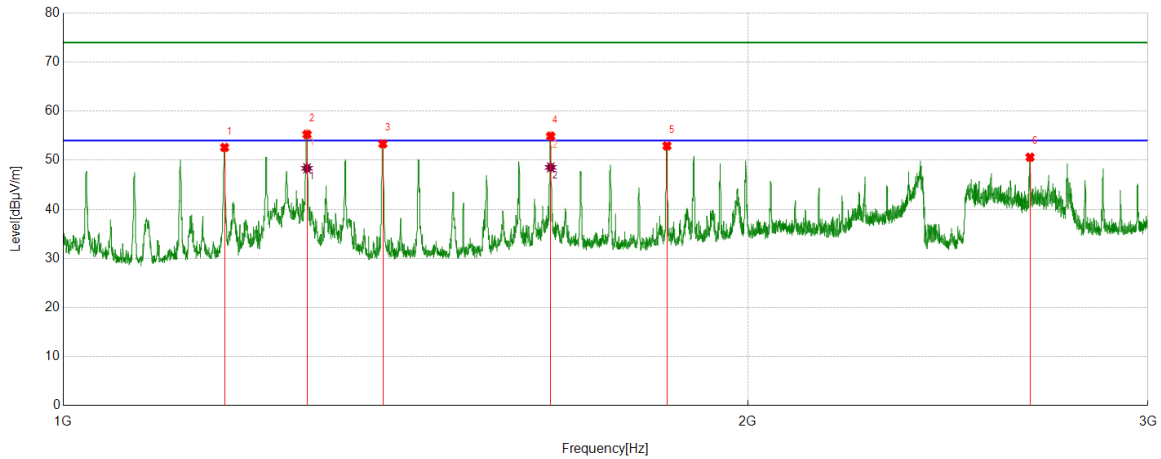
No.	Frequency	Reading Level	Correct Factor	Result	Limit	Margin	Remark
	[MHz]	[dBuV]	[dB/m]	[dBuV/m]	[dBuV/m]	[dB]	
1	1177.7722	74.87	-21.74	53.13	74.00	-20.87	Vertical
2	1279.785	73.72	-20.83	52.89	74.00	-21.11	Vertical
3	1382.5478	74.89	-20.58	54.31	74.00	-19.69	Vertical
4	1586.8234	71.85	-18.84	53.01	74.00	-20.99	Vertical
5	1638.3298	73.67	-18.42	55.25	74.00	-18.75	Vertical
6	2713.9642	65.57	-12.60	52.97	74.00	-21.03	Vertical

AV Result:

No.	Frequency	Reading Level	Correct Factor	Result	Limit	Margin	Remark
	[MHz]	[dBuV]	[dB/m]	[dBuV/m]	[dBuV/m]	[dB]	
1	1382.5478	68.90	-20.58	48.32	54.00	-5.68	Vertical
2	1638.3298	68.23	-18.42	49.81	54.00	-4.19	Vertical

- Note: 1. Measurement = Reading Level + Correct Factor,
Correct Factor = Antenna Factor + Loss (Cable + Filter) – Amplifier Gain.
2. If Peak Result complies with AV limit, AV Result is deemed to comply with AV limit.
3. Test setup: RBW: 1 MHz, VBW: 3 MHz, Sweep time: auto.
4. Peak: Peak detector.
5. For below 3GHz part, filter losses were only considered in the spurious frequency bands and the authorized band was not corrected for Band Reject Filter losses.
6. Only the worst case emission was recorded, if it complies with the limit, the other emissions deemed to comply with the limit.

Test Mode	Channel	Polarization	Verdict
11N HT20	LCH	Horizontal	PASS



PK Result:

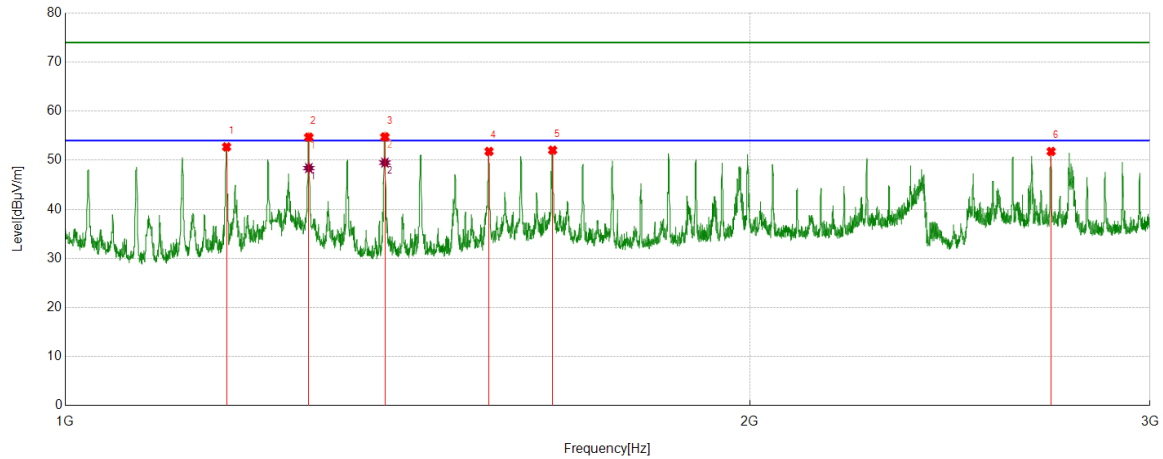
No.	Frequency	Reading Level	Correct Factor	Result	Limit	Margin	Remark
	[MHz]	[dBuV]	[dB/m]	[dBuV/m]	[dBuV/m]	[dB]	
1	1177.5222	74.34	-21.73	52.61	74.00	-21.39	Horizontal
2	1280.035	76.10	-20.83	55.27	74.00	-18.73	Horizontal
3	1382.2978	73.92	-20.58	53.34	74.00	-20.66	Horizontal
4	1638.3298	73.33	-18.42	54.91	74.00	-19.09	Horizontal
5	1843.1054	70.13	-17.21	52.92	74.00	-21.08	Horizontal
6	2662.2078	63.84	-13.23	50.61	74.00	-23.39	Horizontal

AV Result:

No.	Frequency	Reading Level	Correct Factor	Result	Limit	Margin	Remark
	[MHz]	[dBuV]	[dB/m]	[dBuV/m]	[dBuV/m]	[dB]	
1	1280.035	69.19	-20.83	48.36	54.00	-5.64	Horizontal
2	1638.3298	66.96	-18.42	48.54	54.00	-5.46	Horizontal

- Note: 1. Measurement = Reading Level + Correct Factor,
Correct Factor = Antenna Factor + Loss (Cable + Filter) – Amplifier Gain.
- If Peak Result complies with AV limit, AV Result is deemed to comply with AV limit.
 - Test setup: RBW: 1 MHz, VBW: 3 MHz, Sweep time: auto.
 - Peak: Peak detector.
 - For below 3GHz part, filter losses were only considered in the spurious frequency bands and the authorized band was not corrected for Band Reject Filter losses.
 - Only the worst case emission was recorded, if it complies with the limit, the other emissions deemed to comply with the limit.

Test Mode	Channel	Polarization	Verdict
11N HT20	LCH	Vertical	PASS



PK Result:

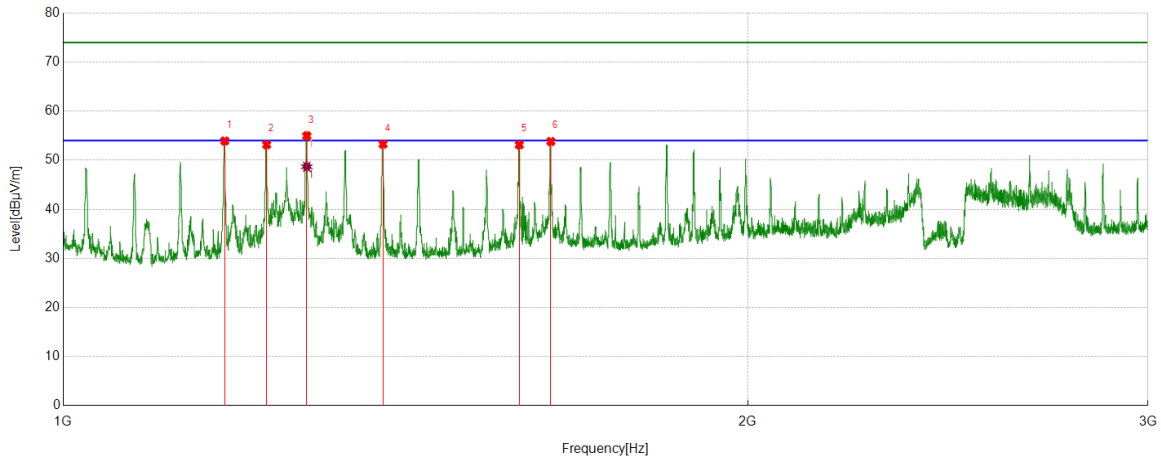
No.	Frequency	Reading Level	Correct Factor	Result	Limit	Margin	Remark
	[MHz]	[dBuV]	[dB/m]	[dBuV/m]	[dBuV/m]	[dB]	
1	1177.5222	74.44	-21.73	52.71	74.00	-21.29	Vertical
2	1279.785	75.53	-20.83	54.70	74.00	-19.30	Vertical
3	1382.2978	75.34	-20.58	54.76	74.00	-19.24	Vertical
4	1536.067	71.38	-19.58	51.80	74.00	-22.20	Vertical
5	1638.3298	70.47	-18.42	52.05	74.00	-21.95	Vertical
6	2714.2143	64.38	-12.59	51.79	74.00	-22.21	Vertical

AV Result:

No.	Frequency	Reading Level	Correct Factor	Result	Limit	Margin	Remark
	[MHz]	[dBuV]	[dB/m]	[dBuV/m]	[dBuV/m]	[dB]	
1	1279.785	69.23	-20.83	48.40	54.00	-5.60	Vertical
2	1382.2978	70.09	-20.58	49.51	54.00	-4.49	Vertical

- Note: 1. Measurement = Reading Level + Correct Factor,
Correct Factor = Antenna Factor + Loss (Cable + Filter) – Amplifier Gain.
- If Peak Result complies with AV limit, AV Result is deemed to comply with AV limit.
 - Test setup: RBW: 1 MHz, VBW: 3 MHz, Sweep time: auto.
 - Peak: Peak detector.
 - For below 3GHz part, filter losses were only considered in the spurious frequency bands and the authorized band was not corrected for Band Reject Filter losses.
 - Only the worst case emission was recorded, if it complies with the limit, the other emissions deemed to comply with the limit.

Test Mode	Channel	Polarization	Verdict
11N HT20	MCH	Horizontal	PASS



PK Result:

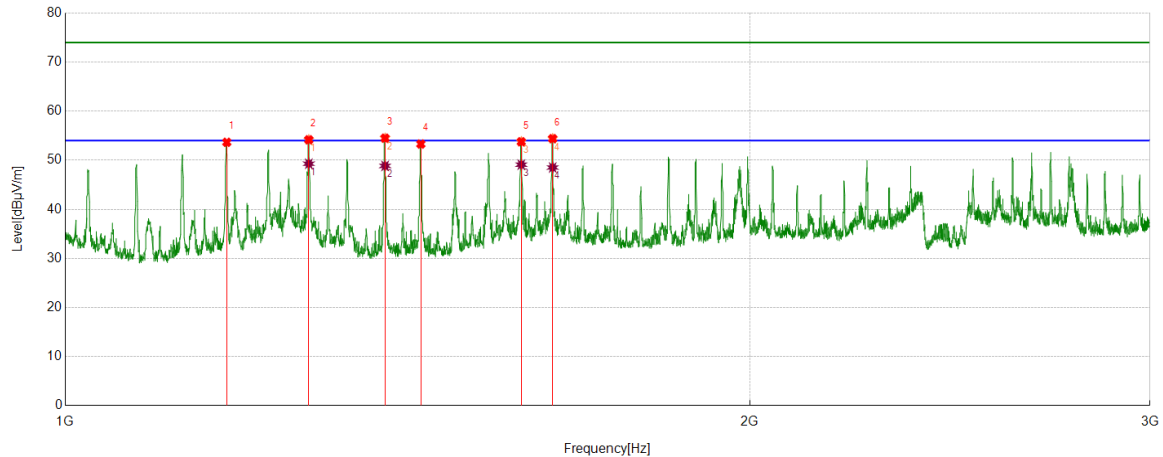
No.	Frequency	Reading Level	Correct Factor	Result	Limit	Margin	Remark
	[MHz]	[dBuV]	[dB/m]	[dBuV/m]	[dBuV/m]	[dB]	
1	1177.7722	75.67	-21.74	53.93	74.00	-20.07	Horizontal
2	1228.7786	74.23	-21.07	53.16	74.00	-20.84	Horizontal
3	1279.785	75.81	-20.83	54.98	74.00	-19.02	Horizontal
4	1382.5478	73.86	-20.58	53.28	74.00	-20.72	Horizontal
5	1587.0734	71.97	-18.83	53.14	74.00	-20.86	Horizontal
6	1638.5798	72.23	-18.41	53.82	74.00	-20.18	Horizontal

AV Result:

No.	Frequency	Reading Level	Correct Factor	Result	Limit	Margin	Remark
	[MHz]	[dBuV]	[dB/m]	[dBuV/m]	[dBuV/m]	[dB]	
1	1279.785	69.51	-20.83	48.68	54.00	-5.32	Horizontal

- Note: 1. Measurement = Reading Level + Correct Factor,
Correct Factor = Antenna Factor + Loss (Cable + Filter) – Amplifier Gain.
2. If Peak Result complies with AV limit, AV Result is deemed to comply with AV limit.
3. Test setup: RBW: 1 MHz, VBW: 3 MHz, Sweep time: auto.
4. Peak: Peak detector.
5. For below 3GHz part, filter losses were only considered in the spurious frequency bands and the authorized band was not corrected for Band Reject Filter losses.
6. Only the worst case emission was recorded, if it complies with the limit, the other emissions deemed to comply with the limit.

Test Mode	Channel	Polarization	Verdict
11N HT20	MCH	Vertical	PASS


PK Result:

No.	Frequency	Reading Level	Correct Factor	Result	Limit	Margin	Remark
	[MHz]	[dBuV]	[dB/m]	[dBuV/m]	[dBuV/m]	[dB]	
1	1177.7722	75.40	-21.74	53.66	74.00	-20.34	Vertical
2	1279.785	75.00	-20.83	54.17	74.00	-19.83	Vertical
3	1382.5478	75.08	-20.58	54.50	74.00	-19.50	Vertical
4	1433.5542	73.21	-19.91	53.30	74.00	-20.70	Vertical
5	1587.0734	72.60	-18.83	53.77	74.00	-20.23	Vertical
6	1638.3298	72.82	-18.42	54.40	74.00	-19.60	Vertical

AV Result:

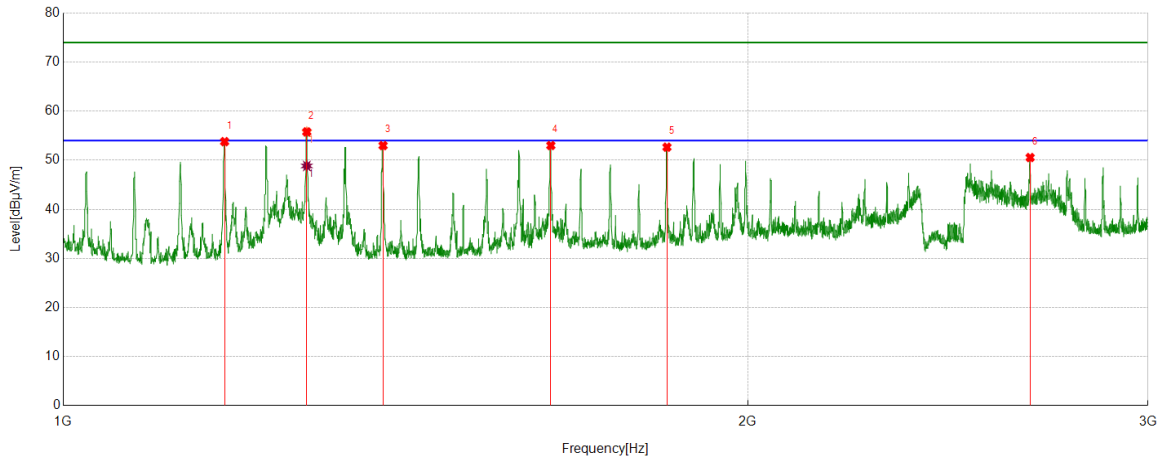
No.	Frequency	Reading Level	Correct Factor	Result	Limit	Margin	Remark
	[MHz]	[dBuV]	[dB/m]	[dBuV/m]	[dBuV/m]	[dB]	
1	1279.785	70.12	-20.83	49.29	54.00	-4.71	Vertical
2	1382.5478	69.43	-20.58	48.85	54.00	-5.15	Vertical
3	1587.0734	67.93	-18.83	49.10	54.00	-4.90	Vertical
4	1638.3298	66.94	-18.42	48.52	54.00	-5.48	Vertical

Note: 1. Measurement = Reading Level + Correct Factor,

Correct Factor = Antenna Factor + Loss (Cable + Filter) – Amplifier Gain.

2. If Peak Result complies with AV limit, AV Result is deemed to comply with AV limit.
3. Test setup: RBW: 1 MHz, VBW: 3 MHz, Sweep time: auto.
4. Peak: Peak detector.
5. For below 3GHz part, filter losses were only considered in the spurious frequency bands and the authorized band was not corrected for Band Reject Filter losses.
6. Only the worst case emission was recorded, if it complies with the limit, the other emissions deemed to comply with the limit.

Test Mode	Channel	Polarization	Verdict
11N HT20	HCH	Horizontal	PASS



PK Result:

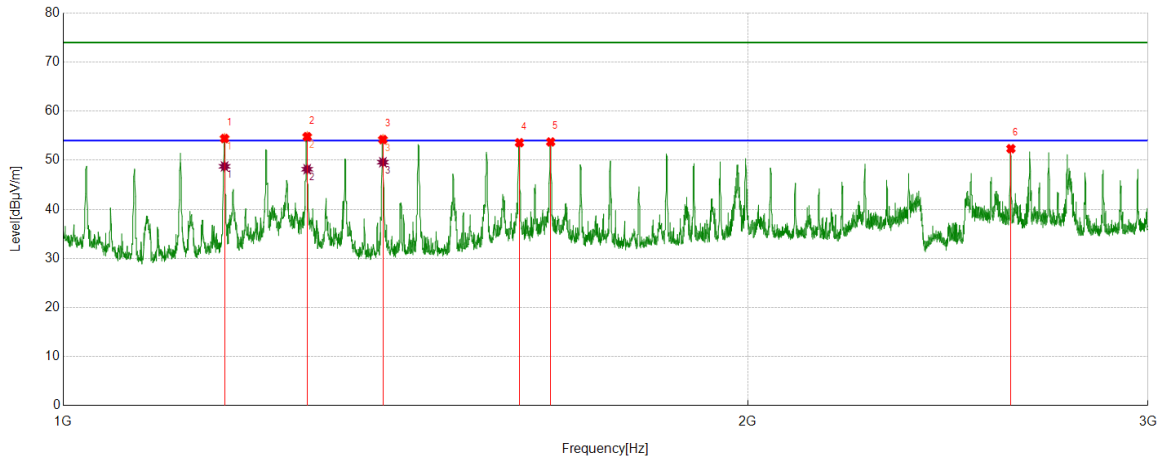
No.	Frequency	Reading Level	Correct Factor	Result	Limit	Margin	Remark
	[MHz]	[dBuV]	[dB/m]	[dBuV/m]	[dBuV/m]	[dB]	
1	1177.5222	75.52	-21.73	53.79	74.00	-20.21	Horizontal
2	1279.785	76.61	-20.83	55.78	74.00	-18.22	Horizontal
3	1382.5478	73.57	-20.58	52.99	74.00	-21.01	Horizontal
4	1638.5798	71.41	-18.41	53.00	74.00	-21.00	Horizontal
5	1843.1054	69.87	-17.21	52.66	74.00	-21.34	Horizontal
6	2662.4578	63.78	-13.23	50.55	74.00	-23.45	Horizontal

AV Result:

No.	Frequency	Reading Level	Correct Factor	Result	Limit	Margin	Remark
	[MHz]	[dBuV]	[dB/m]	[dBuV/m]	[dBuV/m]	[dB]	
1	1279.785	69.67	-20.83	48.84	54.00	-5.16	Horizontal

- Note: 1. Measurement = Reading Level + Correct Factor,
Correct Factor = Antenna Factor + Loss (Cable + Filter) – Amplifier Gain.
2. If Peak Result complies with AV limit, AV Result is deemed to comply with AV limit.
3. Test setup: RBW: 1 MHz, VBW: 3 MHz, Sweep time: auto.
4. Peak: Peak detector.
5. For below 3GHz part, filter losses were only considered in the spurious frequency bands and the authorized band was not corrected for Band Reject Filter losses.
6. Only the worst case emission was recorded, if it complies with the limit, the other emissions deemed to comply with the limit.

Test Mode	Channel	Polarization	Verdict
11N HT20	HCH	Vertical	PASS



PK Result:

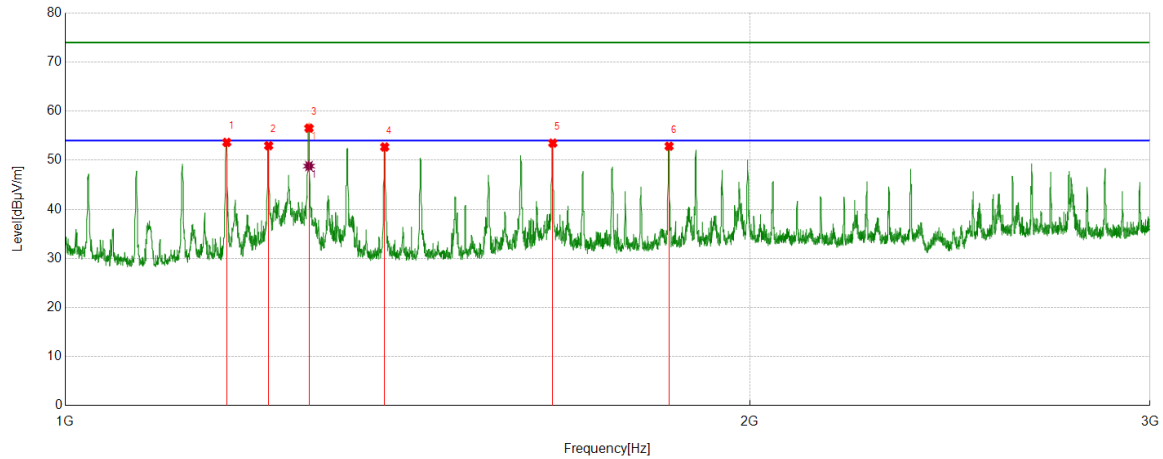
No.	Frequency	Reading Level	Correct Factor	Result	Limit	Margin	Remark
	[MHz]	[dBuV]	[dB/m]	[dBuV/m]	[dBuV/m]	[dB]	
1	1177.5222	76.16	-21.73	54.43	74.00	-19.57	Vertical
2	1280.285	75.62	-20.82	54.80	74.00	-19.20	Vertical
3	1382.2978	74.79	-20.58	54.21	74.00	-19.79	Vertical
4	1587.3234	72.38	-18.81	53.57	74.00	-20.43	Vertical
5	1638.3298	72.15	-18.42	53.73	74.00	-20.27	Vertical
6	2611.2014	65.55	-13.20	52.35	74.00	-21.65	Vertical

AV Result:

No.	Frequency	Reading Level	Correct Factor	Result	Limit	Margin	Remark
	[MHz]	[dBuV]	[dB/m]	[dBuV/m]	[dBuV/m]	[dB]	
1	1177.5222	70.48	-21.73	48.75	54.00	-5.25	Vertical
2	1280.285	68.99	-20.82	48.17	54.00	-5.83	Vertical
3	1382.2978	70.18	-20.58	49.60	54.00	-4.40	Vertical

- Note: 1. Measurement = Reading Level + Correct Factor,
Correct Factor = Antenna Factor + Loss (Cable + Filter) – Amplifier Gain.
- If Peak Result complies with AV limit, AV Result is deemed to comply with AV limit.
 - Test setup: RBW: 1 MHz, VBW: 3 MHz, Sweep time: auto.
 - Peak: Peak detector.
 - For below 3GHz part, filter losses were only considered in the spurious frequency bands and the authorized band was not corrected for Band Reject Filter losses.
 - Only the worst case emission was recorded, if it complies with the limit, the other emissions deemed to comply with the limit.

Test Mode	Channel	Polarization	Verdict
11N HT40	LCH	Horizontal	PASS



PK Result:

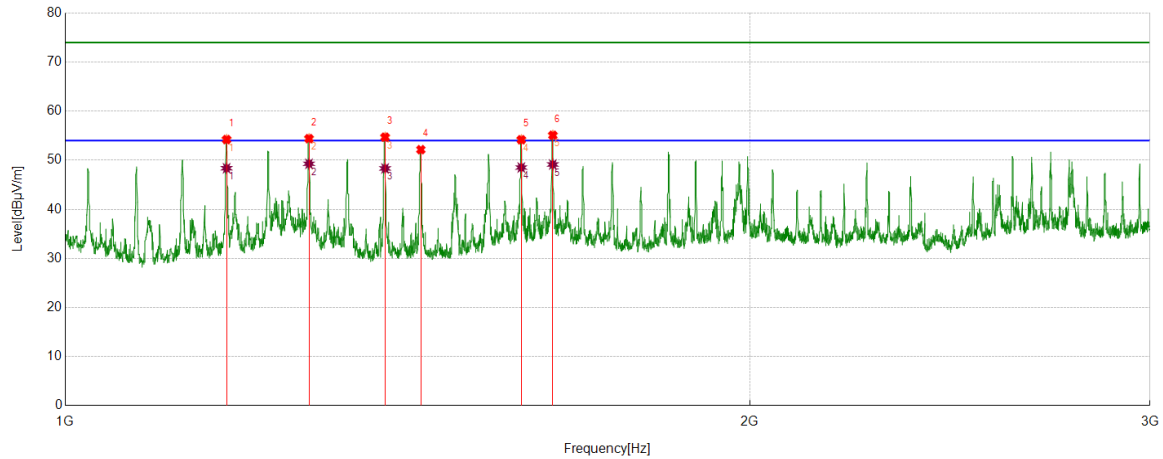
No.	Frequency	Reading Level	Correct Factor	Result	Limit	Margin	Remark
	[MHz]	[dBuV]	[dB/m]	[dBuV/m]	[dBuV/m]	[dB]	
1	1177.7722	75.38	-21.74	53.64	74.00	-20.36	Horizontal
2	1228.7786	74.03	-21.07	52.96	74.00	-21.04	Horizontal
3	1280.035	77.37	-20.83	56.54	74.00	-17.46	Horizontal
4	1382.0478	73.28	-20.58	52.70	74.00	-21.30	Horizontal
5	1638.5798	71.90	-18.41	53.49	74.00	-20.51	Horizontal
6	1843.3554	70.07	-17.21	52.86	74.00	-21.14	Horizontal

AV Result:

No.	Frequency	Reading Level	Correct Factor	Result	Limit	Margin	Remark
	[MHz]	[dBuV]	[dB/m]	[dBuV/m]	[dBuV/m]	[dB]	
1	1280.035	69.64	-20.83	48.81	54.00	-5.19	Horizontal

- Note: 1. Measurement = Reading Level + Correct Factor,
Correct Factor = Antenna Factor + Loss (Cable + Filter) – Amplifier Gain.
2. If Peak Result complies with AV limit, AV Result is deemed to comply with AV limit.
3. Test setup: RBW: 1 MHz, VBW: 3 MHz, Sweep time: auto.
4. Peak: Peak detector.
5. For below 3GHz part, filter losses were only considered in the spurious frequency bands and the authorized band was not corrected for Band Reject Filter losses.
6. Only the worst case emission was recorded, if it complies with the limit, the other emissions deemed to comply with the limit.

Test Mode	Channel	Polarization	Verdict
11N HT40	LCH	Vertical	PASS



PK Result:

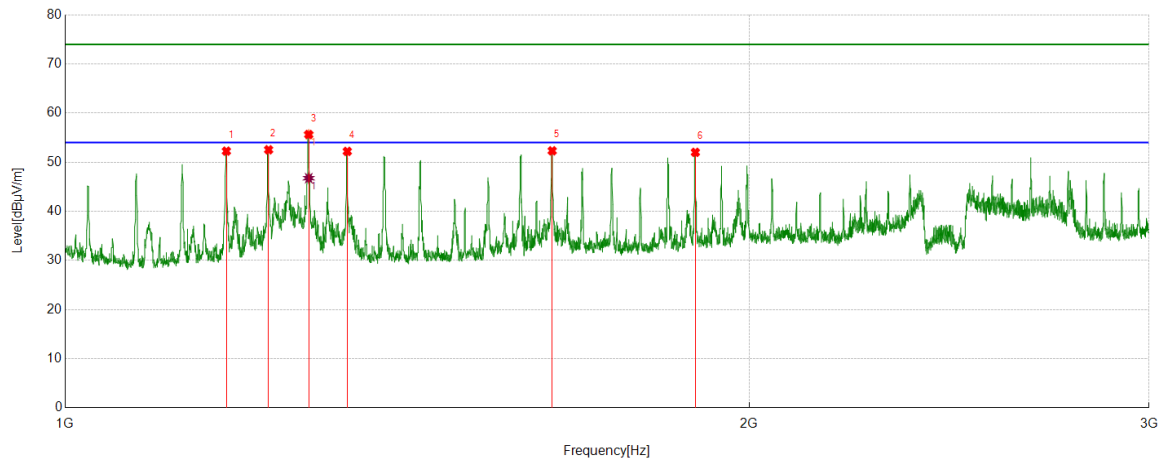
No.	Frequency	Reading Level	Correct Factor	Result	Limit	Margin	Remark
	[MHz]	[dBuV]	[dB/m]	[dBuV/m]	[dBuV/m]	[dB]	
1	1177.5222	75.94	-21.73	54.21	74.00	-19.79	Vertical
2	1280.035	75.24	-20.83	54.41	74.00	-19.59	Vertical
3	1382.5478	75.28	-20.58	54.70	74.00	-19.30	Vertical
4	1433.5542	72.07	-19.91	52.16	74.00	-21.84	Vertical
5	1587.0734	73.01	-18.83	54.18	74.00	-19.82	Vertical
6	1638.5798	73.50	-18.41	55.09	74.00	-18.91	Vertical

AV Result:

No.	Frequency	Reading Level	Correct Factor	Result	Limit	Margin	Remark
	[MHz]	[dBuV]	[dB/m]	[dBuV/m]	[dBuV/m]	[dB]	
1	1177.5222	70.10	-21.73	48.37	54.00	-5.63	Vertical
2	1280.035	70.11	-20.83	49.28	54.00	-4.72	Vertical
3	1382.5478	68.91	-20.58	48.33	54.00	-5.67	Vertical
4	1587.0734	67.35	-18.83	48.52	54.00	-5.48	Vertical
5	1638.5798	67.54	-18.41	49.13	54.00	-4.87	Vertical

- Note: 1. Measurement = Reading Level + Correct Factor,
Correct Factor = Antenna Factor + Loss (Cable + Filter) – Amplifier Gain.
- If Peak Result complies with AV limit, AV Result is deemed to comply with AV limit.
 - Test setup: RBW: 1 MHz, VBW: 3 MHz, Sweep time: auto.
 - Peak: Peak detector.
 - For below 3GHz part, filter losses were only considered in the spurious frequency bands and the authorized band was not corrected for Band Reject Filter losses.
 - Only the worst case emission was recorded, if it complies with the limit, the other emissions deemed to comply with the limit.

Test Mode	Channel	Polarization	Verdict
11N HT40	MCH	Horizontal	PASS



PK Result:

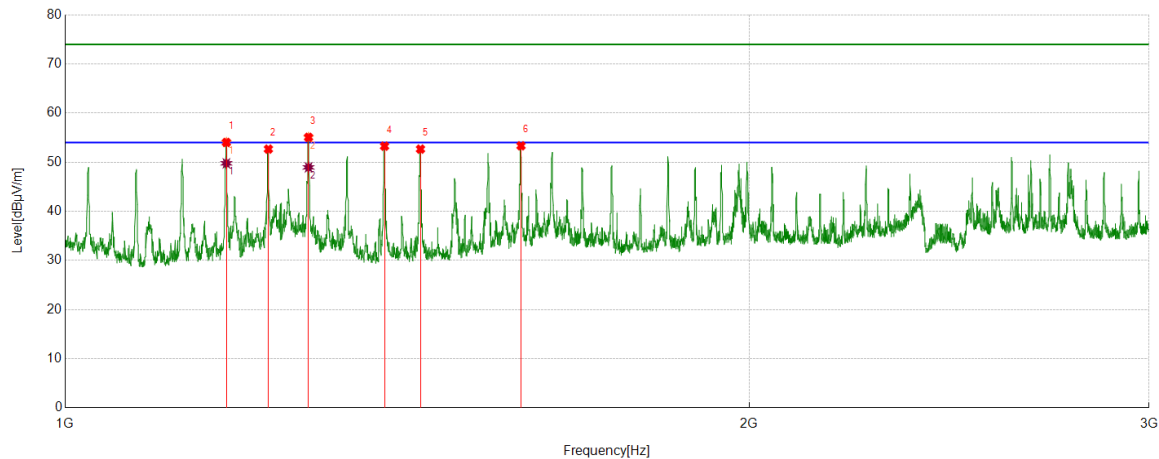
No.	Frequency	Reading Level	Correct Factor	Result	Limit	Margin	Remark
	[MHz]	[dBuV]	[dB/m]	[dBuV/m]	[dBuV/m]	[dB]	
1	1177.5222	73.99	-21.73	52.26	74.00	-21.74	Horizontal
2	1229.0286	73.60	-21.06	52.54	74.00	-21.46	Horizontal
3	1280.035	76.48	-20.83	55.65	74.00	-18.35	Horizontal
4	1331.0414	72.80	-20.59	52.21	74.00	-21.79	Horizontal
5	1638.3298	70.75	-18.42	52.33	74.00	-21.67	Horizontal
6	1894.1118	69.12	-17.10	52.02	74.00	-21.98	Horizontal

AV Result:

No.	Frequency	Reading Level	Correct Factor	Result	Limit	Margin	Remark
	[MHz]	[dBuV]	[dB/m]	[dBuV/m]	[dBuV/m]	[dB]	
1	1280.035	67.59	-20.83	46.76	54.00	-7.24	Horizontal

- Note: 1. Measurement = Reading Level + Correct Factor,
Correct Factor = Antenna Factor + Loss (Cable + Filter) – Amplifier Gain.
2. If Peak Result complies with AV limit, AV Result is deemed to comply with AV limit.
3. Test setup: RBW: 1 MHz, VBW: 3 MHz, Sweep time: auto.
4. Peak: Peak detector.
5. For below 3GHz part, filter losses were only considered in the spurious frequency bands and the authorized band was not corrected for Band Reject Filter losses.
6. Only the worst case emission was recorded, if it complies with the limit, the other emissions deemed to comply with the limit.

Test Mode	Channel	Polarization	Verdict
11N HT40	MCH	Vertical	PASS



PK Result:

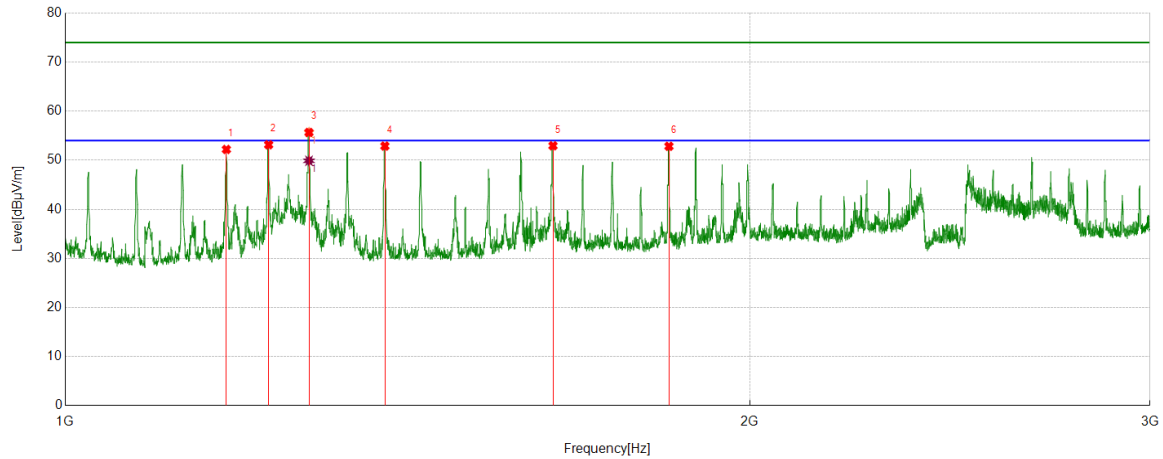
No.	Frequency	Reading Level	Correct Factor	Result	Limit	Margin	Remark
	[MHz]	[dBuV]	[dB/m]	[dBuV/m]	[dBuV/m]	[dB]	
1	1177.5222	75.77	-21.73	54.04	74.00	-19.96	Vertical
2	1228.7786	73.75	-21.07	52.68	74.00	-21.32	Vertical
3	1279.785	75.91	-20.83	55.08	74.00	-18.92	Vertical
4	1382.2978	73.86	-20.58	53.28	74.00	-20.72	Vertical
5	1433.5542	72.59	-19.91	52.68	74.00	-21.32	Vertical
6	1587.3234	72.16	-18.81	53.35	74.00	-20.65	Vertical

AV Result:

No.	Frequency	Reading Level	Correct Factor	Result	Limit	Margin	Remark
	[MHz]	[dBuV]	[dB/m]	[dBuV/m]	[dBuV/m]	[dB]	
1	1177.5222	71.51	-21.73	49.78	54.00	-4.22	Vertical
2	1279.785	69.79	-20.83	48.96	54.00	-5.04	Vertical

- Note: 1. Measurement = Reading Level + Correct Factor,
Correct Factor = Antenna Factor + Loss (Cable + Filter) – Amplifier Gain.
2. If Peak Result complies with AV limit, AV Result is deemed to comply with AV limit.
3. Test setup: RBW: 1 MHz, VBW: 3 MHz, Sweep time: auto.
4. Peak: Peak detector.
5. For below 3GHz part, filter losses were only considered in the spurious frequency bands and the authorized band was not corrected for Band Reject Filter losses.
6. Only the worst case emission was recorded, if it complies with the limit, the other emissions deemed to comply with the limit.

Test Mode	Channel	Polarization	Verdict
11N HT40	HCH	Horizontal	PASS



PK Result:

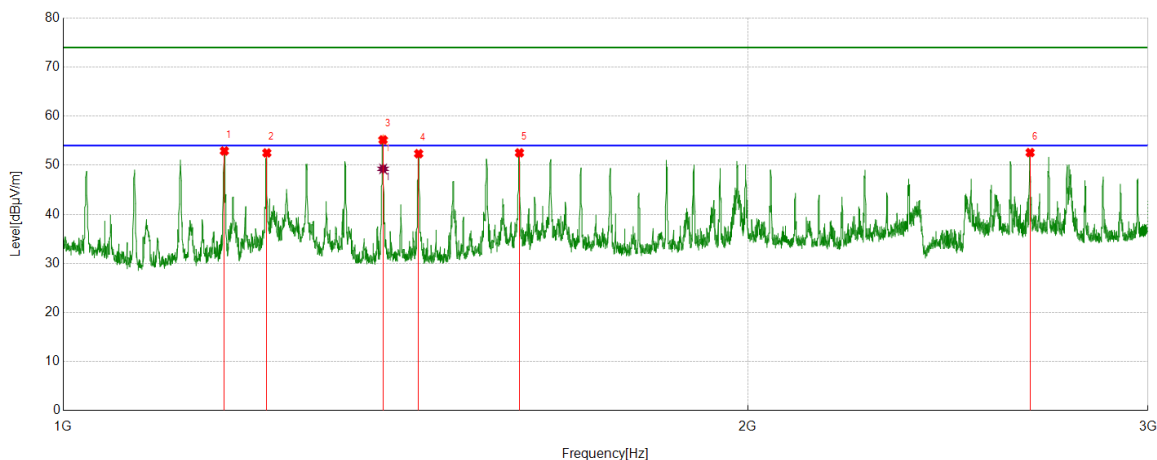
No.	Frequency	Reading Level	Correct Factor	Result	Limit	Margin	Remark
	[MHz]	[dBuV]	[dB/m]	[dBuV/m]	[dBuV/m]	[dB]	
1	1177.2722	73.93	-21.73	52.20	74.00	-21.80	Horizontal
2	1228.7786	74.22	-21.07	53.15	74.00	-20.85	Horizontal
3	1280.035	76.49	-20.83	55.66	74.00	-18.34	Horizontal
4	1382.2978	73.47	-20.58	52.89	74.00	-21.11	Horizontal
5	1638.8299	71.37	-18.42	52.95	74.00	-21.05	Horizontal
6	1843.1054	70.05	-17.21	52.84	74.00	-21.16	Horizontal

AV Result:

No.	Frequency	Reading Level	Correct Factor	Result	Limit	Margin	Remark
	[MHz]	[dBuV]	[dB/m]	[dBuV/m]	[dBuV/m]	[dB]	
1	1280.035	70.72	-20.83	49.89	54.00	-4.11	Horizontal

- Note: 1. Measurement = Reading Level + Correct Factor,
Correct Factor = Antenna Factor + Loss (Cable + Filter) – Amplifier Gain.
2. If Peak Result complies with AV limit, AV Result is deemed to comply with AV limit.
3. Test setup: RBW: 1 MHz, VBW: 3 MHz, Sweep time: auto.
4. Peak: Peak detector.
5. For below 3GHz part, filter losses were only considered in the spurious frequency bands and the authorized band was not corrected for Band Reject Filter losses.
6. Only the worst case emission was recorded, if it complies with the limit, the other emissions deemed to comply with the limit.

Test Mode	Channel	Polarization	Verdict
11N HT40	HCH	Vertical	PASS



PK Result:

No.	Frequency	Reading Level	Correct Factor	Result	Limit	Margin	Remark
	[MHz]	[dBuV]	[dB/m]	[dBuV/m]	[dBuV/m]	[dB]	
1	1177.2722	74.64	-21.73	52.91	74.00	-21.09	Vertical
2	1229.0286	73.57	-21.06	52.51	74.00	-21.49	Vertical
3	1382.5478	75.75	-20.58	55.17	74.00	-18.83	Vertical
4	1433.3042	72.27	-19.92	52.35	74.00	-21.65	Vertical
5	1587.3234	71.34	-18.81	52.53	74.00	-21.47	Vertical
6	2662.4578	65.81	-13.23	52.58	74.00	-21.42	Vertical

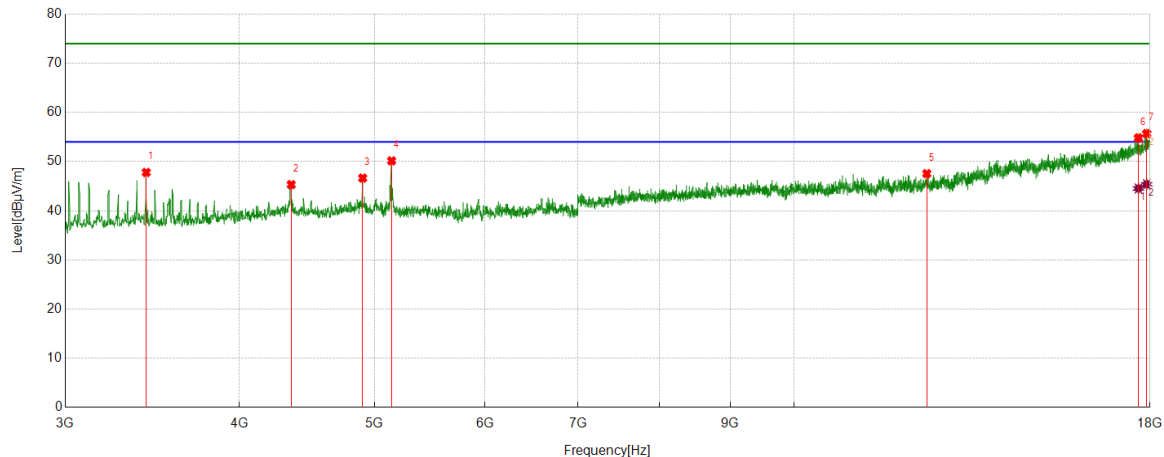
AV Result:

No.	Frequency	Reading Level	Correct Factor	Result	Limit	Margin	Remark
	[MHz]	[dBuV]	[dB/m]	[dBuV/m]	[dBuV/m]	[dB]	
1	1382.5478	69.84	-20.58	49.26	54.00	-4.74	Vertical

- Note: 1. Measurement = Reading Level + Correct Factor,
Correct Factor = Antenna Factor + Loss (Cable + Filter) – Amplifier Gain.
2. If Peak Result complies with AV limit, AV Result is deemed to comply with AV limit.
3. Test setup: RBW: 1 MHz, VBW: 3 MHz, Sweep time: auto.
4. Peak: Peak detector.
5. For below 3GHz part, filter losses were only considered in the spurious frequency bands and the authorized band was not corrected for Band Reject Filter losses.
6. Only the worst case emission was recorded, if it complies with the limit, the other emissions deemed to comply with the limit.

Part 2: 3GHz~18GHz
HARMONICS AND SPURIOUS EMISSIONS

Test Mode	Channel	Polarization	Verdict
11B	LCH	Horizontal	PASS


PK Result:

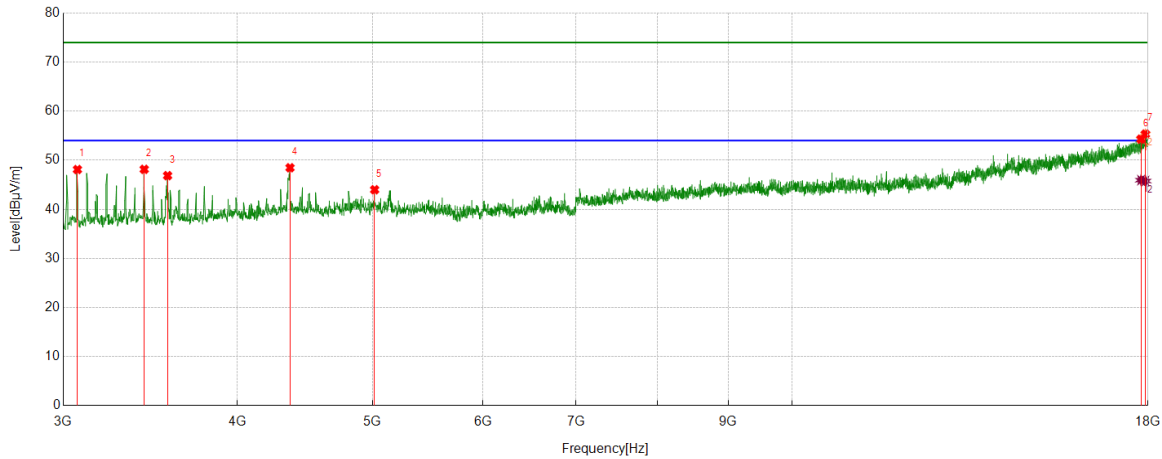
No.	Frequency	Reading Level	Correct Factor	Result	Limit	Margin	Remark
	[MHz]	[dBuV]	[dB/m]	[dBuV/m]	[dBuV/m]	[dB]	
1	3429.4287	57.16	-9.37	47.79	74.00	-26.21	Horizontal
2	4357.6697	51.07	-5.75	45.32	74.00	-28.68	Horizontal
3	4903.3629	50.45	-3.80	46.65	74.00	-27.35	Horizontal
4	5143.3929	54.07	-3.92	50.15	74.00	-23.85	Horizontal
5	12449.3062	40.56	6.99	47.55	74.00	-26.45	Horizontal
6	17658.7073	37.04	17.77	54.81	74.00	-19.19	Horizontal
7	17902.4878	36.46	19.23	55.69	74.00	-18.31	Horizontal

AV Result:

No.	Frequency	Reading Level	Correct Factor	Result	Limit	Margin	Remark
	[MHz]	[dBuV]	[dB/m]	[dBuV/m]	[dBuV/m]	[dB]	
1	17658.7073	26.76	17.77	44.53	54.00	-9.47	Horizontal
2	17902.4878	26.16	19.23	45.39	54.00	-8.61	Horizontal

- Note: 1. Measurement = Reading Level + Correct Factor,
 Correct Factor = Antenna Factor + Loss (Cable + Filter) – Amplifier Gain.
2. If Peak Result complies with AV limit, AV Result is deemed to comply with AV limit.
3. Peak detector: RBW: 1 MHz, VBW: 3 MHz.
4. Average detector: RBW: 1 MHz, VBW: 1/T MHz(refer to clause 7.1.).
5. For above 3GHz part, filter losses were only considered in the spurious frequency bands and the authorized band was not corrected for HPF losses.
6. Only the worst case emission was recorded, if it complies with the limit, the other emissions deemed to comply with the limit.

Test Mode	Channel	Polarization	Verdict
11B	LCH	Vertical	PASS



PK Result:

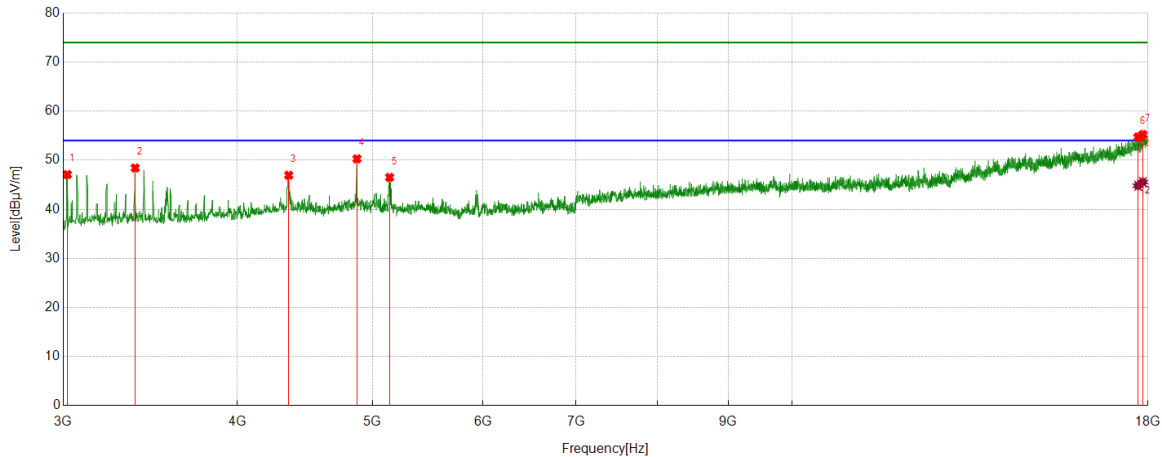
No.	Frequency	Reading Level	Correct Factor	Result	Limit	Margin	Remark
	[MHz]	[dBuV]	[dB/m]	[dBuV/m]	[dBuV/m]	[dB]	
1	3071.2589	58.01	-9.90	48.11	74.00	-25.89	Vertical
2	3429.4287	57.52	-9.37	48.15	74.00	-25.85	Vertical
3	3564.4456	55.63	-8.77	46.86	74.00	-27.14	Vertical
4	4363.2954	54.19	-5.72	48.47	74.00	-25.53	Vertical
5	5017.7522	47.64	-3.65	43.99	74.00	-30.01	Vertical
6	17793.7242	36.39	17.91	54.30	74.00	-19.70	Vertical
7	17924.9906	36.62	18.71	55.33	74.00	-18.67	Vertical

AV Result:

No.	Frequency	Reading Level	Correct Factor	Result	Limit	Margin	Remark
	[MHz]	[dBuV]	[dB/m]	[dBuV/m]	[dBuV/m]	[dB]	
1	17793.7242	28.03	17.91	45.94	54.00	-8.06	Vertical
2	17924.9906	27.06	18.71	45.77	54.00	-8.23	Vertical

- Note: 1. Measurement = Reading Level + Correct Factor,
Correct Factor = Antenna Factor + Loss (Cable + Filter) – Amplifier Gain.
- If Peak Result complies with AV limit, AV Result is deemed to comply with AV limit.
 - Peak detector: RBW: 1 MHz, VBW: 3 MHz.
 - Average detector: RBW: 1 MHz, VBW: 1/T MHz(refer to clause 7.1.).
 - For above 3GHz part, filter losses were only considered in the spurious frequency bands and the authorized band was not corrected for HPF losses.
 - Only the worst case emission was recorded, if it complies with the limit, the other emissions deemed to comply with the limit.

Test Mode	Channel	Polarization	Verdict
11B	MCH	Horizontal	PASS



PK Result:

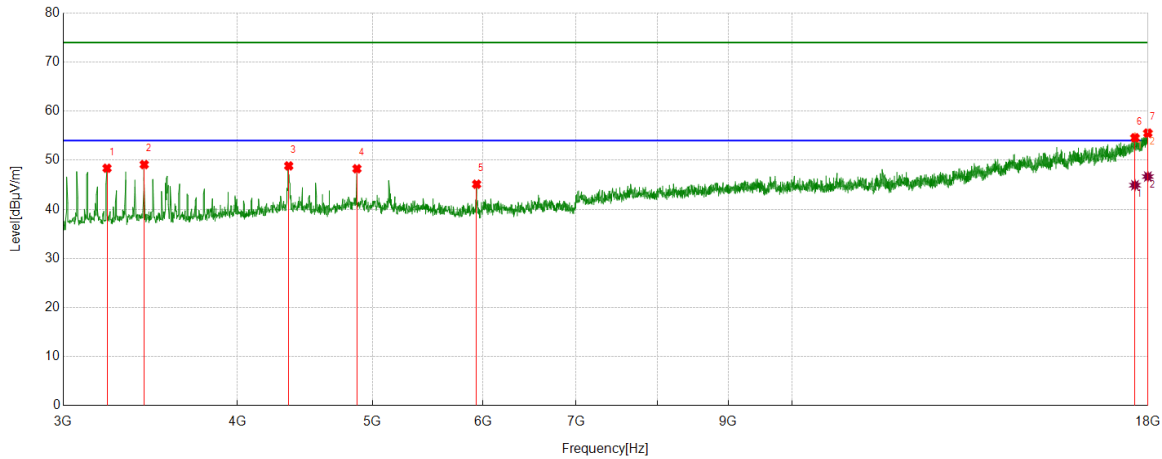
No.	Frequency	Reading Level	Correct Factor	Result	Limit	Margin	Remark
	[MHz]	[dBuV]	[dB/m]	[dBuV/m]	[dBuV/m]	[dB]	
1	3020.6276	57.65	-10.56	47.09	74.00	-26.91	Horizontal
2	3378.7974	57.87	-9.45	48.42	74.00	-25.58	Horizontal
3	4353.9192	52.66	-5.72	46.94	74.00	-27.06	Horizontal
4	4873.3592	53.91	-3.62	50.29	74.00	-23.71	Horizontal
5	5143.3929	50.43	-3.92	46.51	74.00	-27.49	Horizontal
6	17705.5882	36.94	17.78	54.72	74.00	-19.28	Horizontal
7	17848.106	36.59	18.64	55.23	74.00	-18.77	Horizontal

AV Result:

No.	Frequency	Reading Level	Correct Factor	Result	Limit	Margin	Remark
	[MHz]	[dBuV]	[dB/m]	[dBuV/m]	[dBuV/m]	[dB]	
1	17705.5882	27.03	17.78	44.81	54.00	-9.19	Horizontal
2	17848.106	26.91	18.64	45.55	54.00	-8.45	Horizontal

- Note: 1. Measurement = Reading Level + Correct Factor,
Correct Factor = Antenna Factor + Loss (Cable + Filter) – Amplifier Gain.
- If Peak Result complies with AV limit, AV Result is deemed to comply with AV limit.
 - Peak detector: RBW: 1 MHz, VBW: 3 MHz.
 - Average detector: RBW: 1 MHz, VBW: 1/T MHz(refer to clause 7.1.).
 - For above 3GHz part, filter losses were only considered in the spurious frequency bands and the authorized band was not corrected for HPF losses.
 - Only the worst case emission was recorded, if it complies with the limit, the other emissions deemed to comply with the limit.

Test Mode	Channel	Polarization	Verdict
11B	MCH	Vertical	PASS



PK Result:

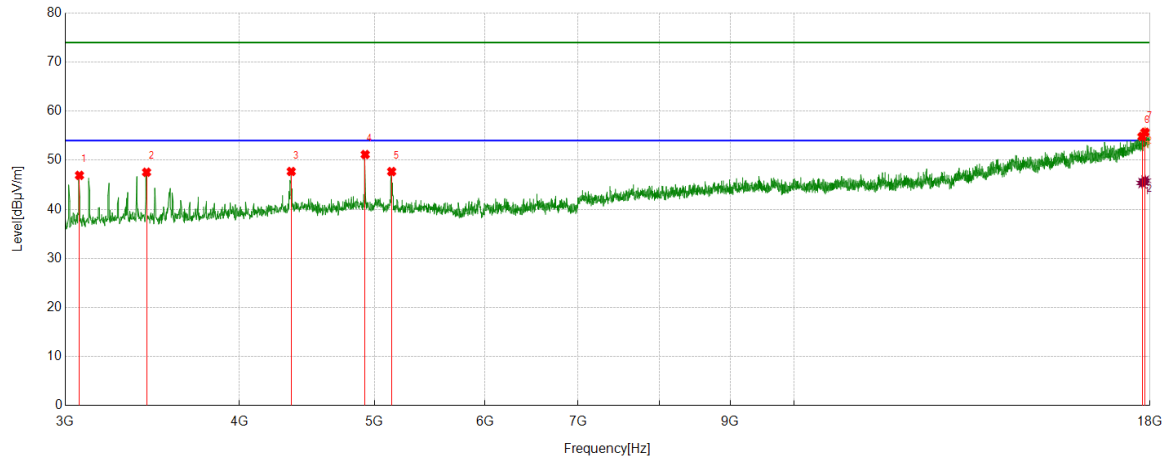
No.	Frequency	Reading Level	Correct Factor	Result	Limit	Margin	Remark
	[MHz]	[dBuV]	[dB/m]	[dBuV/m]	[dBuV/m]	[dB]	
1	3225.0281	57.63	-9.26	48.37	74.00	-25.63	Vertical
2	3429.4287	58.49	-9.37	49.12	74.00	-24.88	Vertical
3	4353.9192	54.57	-5.72	48.85	74.00	-25.15	Vertical
4	4873.3592	51.89	-3.62	48.27	74.00	-25.73	Vertical
5	5938.4923	47.81	-2.69	45.12	74.00	-28.88	Vertical
6	17617.4522	36.94	17.64	54.58	74.00	-19.42	Vertical
7	17996.2495	36.84	18.69	55.53	74.00	-18.47	Vertical

AV Result:

No.	Frequency	Reading Level	Correct Factor	Result	Limit	Margin	Remark
	[MHz]	[dBuV]	[dB/m]	[dBuV/m]	[dBuV/m]	[dB]	
1	17617.4522	27.28	17.64	44.92	54.00	-9.08	Vertical
2	17996.2495	27.98	18.69	46.67	54.00	-7.33	Vertical

- Note: 1. Measurement = Reading Level + Correct Factor,
Correct Factor = Antenna Factor + Loss (Cable + Filter) – Amplifier Gain.
- If Peak Result complies with AV limit, AV Result is deemed to comply with AV limit.
 - Peak detector: RBW: 1 MHz, VBW: 3 MHz.
 - Average detector: RBW: 1 MHz, VBW: 1/T MHz(refer to clause 7.1.).
 - For above 3GHz part, filter losses were only considered in the spurious frequency bands and the authorized band was not corrected for HPF losses.
 - Only the worst case emission was recorded, if it complies with the limit, the other emissions deemed to comply with the limit.

Test Mode	Channel	Polarization	Verdict
11B	HCH	Horizontal	PASS



PK Result:

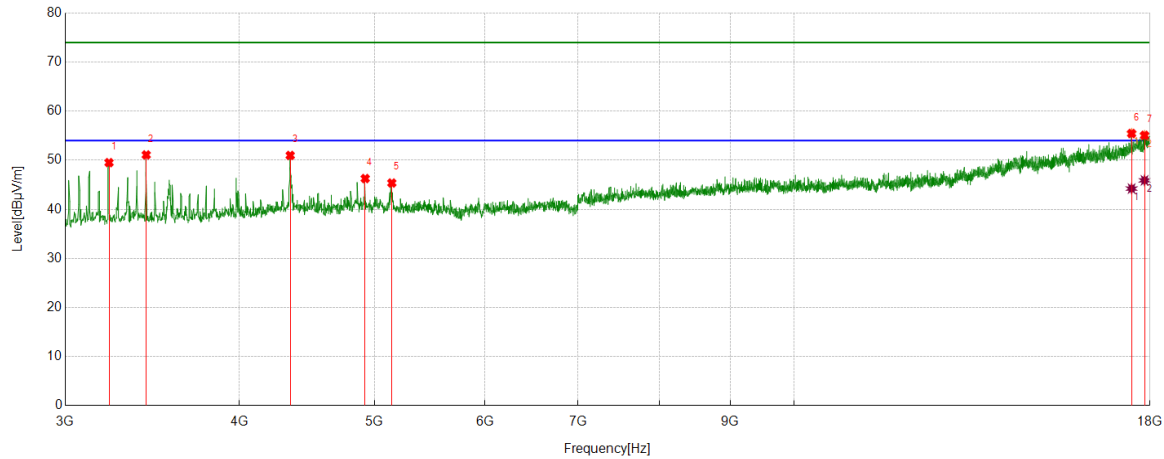
No.	Frequency	Reading Level	Correct Factor	Result	Limit	Margin	Remark
	[MHz]	[dBuV]	[dB/m]	[dBuV/m]	[dBuV/m]	[dB]	
1	3071.2589	56.82	-9.90	46.92	74.00	-27.08	Horizontal
2	3431.3039	56.90	-9.34	47.56	74.00	-26.44	Horizontal
3	4357.6697	53.46	-5.75	47.71	74.00	-26.29	Horizontal
4	4923.9905	55.04	-3.88	51.16	74.00	-22.84	Horizontal
5	5143.3929	51.61	-3.92	47.69	74.00	-26.31	Horizontal
6	17769.3462	36.69	18.15	54.84	74.00	-19.16	Horizontal
7	17855.607	36.88	18.81	55.69	74.00	-18.31	Horizontal

AV Result:

No.	Frequency	Reading Level	Correct Factor	Result	Limit	Margin	Remark
	[MHz]	[dBuV]	[dB/m]	[dBuV/m]	[dBuV/m]	[dB]	
1	17769.3462	27.21	18.15	45.36	54.00	-8.64	Horizontal
2	17855.607	27.03	18.81	45.84	54.00	-8.16	Horizontal

- Note: 1. Measurement = Reading Level + Correct Factor,
Correct Factor = Antenna Factor + Loss (Cable + Filter) – Amplifier Gain.
- If Peak Result complies with AV limit, AV Result is deemed to comply with AV limit.
 - Peak detector: RBW: 1 MHz, VBW: 3 MHz.
 - Average detector: RBW: 1 MHz, VBW: 1/T MHz(refer to clause 7.1.).
 - For above 3GHz part, filter losses were only considered in the spurious frequency bands and the authorized band was not corrected for HPF losses.
 - Only the worst case emission was recorded, if it complies with the limit, the other emissions deemed to comply with the limit.

Test Mode	Channel	Polarization	Verdict
11B	HCH	Vertical	PASS



PK Result:

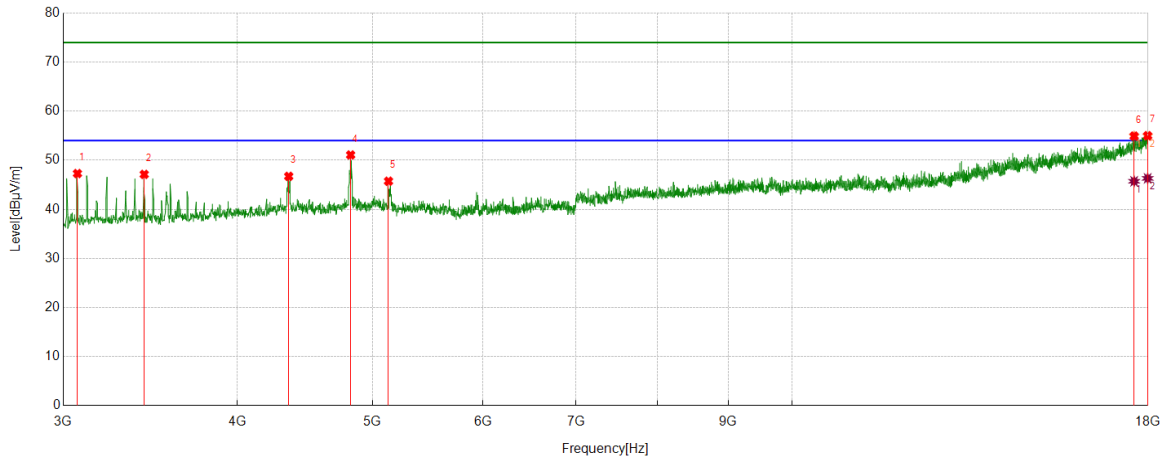
No.	Frequency	Reading Level	Correct Factor	Result	Limit	Margin	Remark
	[MHz]	[dBuV]	[dB/m]	[dBuV/m]	[dBuV/m]	[dB]	
1	3225.0281	58.77	-9.26	49.51	74.00	-24.49	Vertical
2	3429.4287	60.46	-9.37	51.09	74.00	-22.91	Vertical
3	4350.1688	56.68	-5.70	50.98	74.00	-23.02	Vertical
4	4923.9905	50.15	-3.88	46.27	74.00	-27.73	Vertical
5	5145.2682	49.38	-4.02	45.36	74.00	-28.64	Vertical
6	17461.8077	38.05	17.40	55.45	74.00	-18.55	Vertical
7	17838.7298	36.58	18.49	55.07	74.00	-18.93	Vertical

AV Result:

No.	Frequency	Reading Level	Correct Factor	Result	Limit	Margin	Remark
	[MHz]	[dBuV]	[dB/m]	[dBuV/m]	[dBuV/m]	[dB]	
1	17461.8077	26.82	17.40	44.22	54.00	-9.78	Vertical
2	17838.7298	27.41	18.49	45.90	54.00	-8.10	Vertical

- Note: 1. Measurement = Reading Level + Correct Factor,
Correct Factor = Antenna Factor + Loss (Cable + Filter) – Amplifier Gain.
- If Peak Result complies with AV limit, AV Result is deemed to comply with AV limit.
 - Peak detector: RBW: 1 MHz, VBW: 3 MHz.
 - Average detector: RBW: 1 MHz, VBW: 1/T MHz(refer to clause 7.1.).
 - For above 3GHz part, filter losses were only considered in the spurious frequency bands and the authorized band was not corrected for HPF losses.
 - Only the worst case emission was recorded, if it complies with the limit, the other emissions deemed to comply with the limit.

Test Mode	Channel	Polarization	Verdict
11G	LCH	Horizontal	PASS



PK Result:

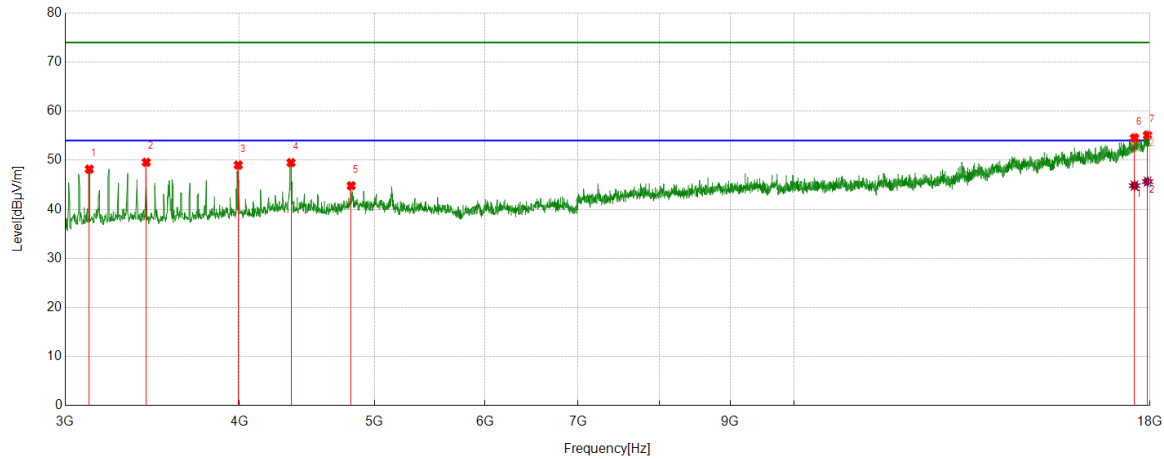
No.	Frequency	Reading Level	Correct Factor	Result	Limit	Margin	Remark
	[MHz]	[dBuV]	[dB/m]	[dBuV/m]	[dBuV/m]	[dB]	
1	3071.2589	57.19	-9.90	47.29	74.00	-26.71	Horizontal
2	3429.4287	56.49	-9.37	47.12	74.00	-26.88	Horizontal
3	4353.9192	52.44	-5.72	46.72	74.00	-27.28	Horizontal
4	4822.7278	55.17	-4.09	51.08	74.00	-22.92	Horizontal
5	5134.0168	49.28	-3.55	45.73	74.00	-28.27	Horizontal
6	17593.0741	37.28	17.64	54.92	74.00	-19.08	Horizontal
7	17990.6238	36.40	18.59	54.99	74.00	-19.01	Horizontal

AV Result:

No.	Frequency	Reading Level	Correct Factor	Result	Limit	Margin	Remark
	[MHz]	[dBuV]	[dB/m]	[dBuV/m]	[dBuV/m]	[dB]	
1	17593.0741	28.07	17.64	45.71	54.00	-8.29	Horizontal
2	17990.6238	27.72	18.59	46.31	54.00	-7.69	Horizontal

- Note: 1. Measurement = Reading Level + Correct Factor,
Correct Factor = Antenna Factor + Loss (Cable + Filter) – Amplifier Gain.
- If Peak Result complies with AV limit, AV Result is deemed to comply with AV limit.
 - Peak detector: RBW: 1 MHz, VBW: 3 MHz.
 - Average detector: RBW: 1 MHz, VBW: 1/T MHz(refer to clause 7.1.).
 - For above 3GHz part, filter losses were only considered in the spurious frequency bands and the authorized band was not corrected for HPF losses.
 - Only the worst case emission was recorded, if it complies with the limit, the other emissions deemed to comply with the limit.

Test Mode	Channel	Polarization	Verdict
11G	LCH	Vertical	PASS



PK Result:

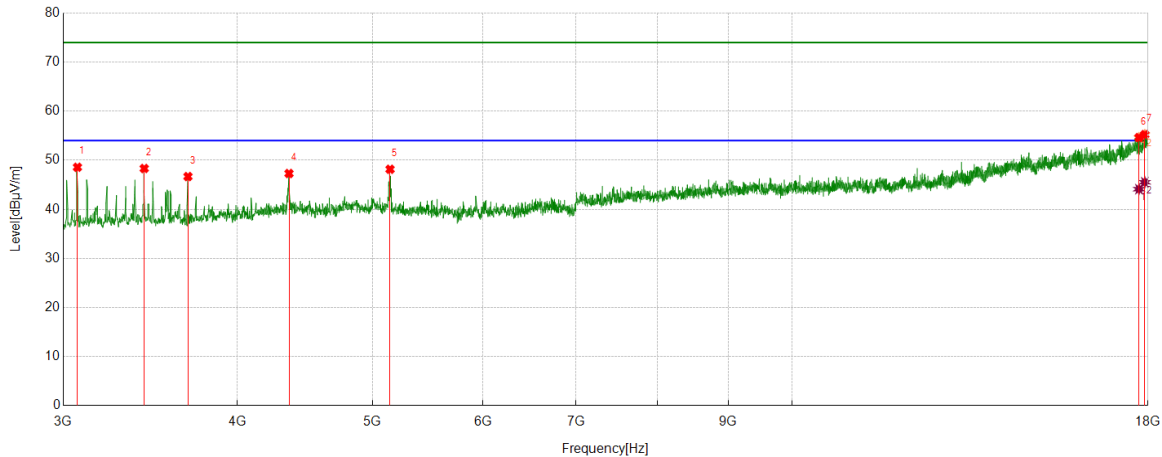
No.	Frequency	Reading Level	Correct Factor	Result	Limit	Margin	Remark
	[MHz]	[dBuV]	[dB/m]	[dBuV/m]	[dBuV/m]	[dB]	
1	3121.8902	58.24	-10.06	48.18	74.00	-25.82	Vertical
2	3429.4287	58.95	-9.37	49.58	74.00	-24.42	Vertical
3	3991.999	56.09	-7.07	49.02	74.00	-24.98	Vertical
4	4355.7945	55.24	-5.73	49.51	74.00	-24.49	Vertical
5	4811.4764	48.90	-4.10	44.80	74.00	-29.20	Vertical
6	17546.1933	37.93	16.62	54.55	74.00	-19.45	Vertical
7	17926.8659	36.39	18.72	55.11	74.00	-18.89	Vertical

AV Result:

No.	Frequency	Reading Level	Correct Factor	Result	Limit	Margin	Remark
	[MHz]	[dBuV]	[dB/m]	[dBuV/m]	[dBuV/m]	[dB]	
1	17546.1933	28.20	16.62	44.82	54.00	-9.18	Vertical
2	17926.8659	26.92	18.72	45.64	54.00	-8.36	Vertical

- Note: 1. Measurement = Reading Level + Correct Factor,
Correct Factor = Antenna Factor + Loss (Cable + Filter) – Amplifier Gain.
- If Peak Result complies with AV limit, AV Result is deemed to comply with AV limit.
 - Peak detector: RBW: 1 MHz, VBW: 3 MHz.
 - Average detector: RBW: 1 MHz, VBW: 1/T MHz(refer to clause 7.1.).
 - For above 3GHz part, filter losses were only considered in the spurious frequency bands and the authorized band was not corrected for HPF losses.
 - Only the worst case emission was recorded, if it complies with the limit, the other emissions deemed to comply with the limit.

Test Mode	Channel	Polarization	Verdict
11G	MCH	Horizontal	PASS



PK Result:

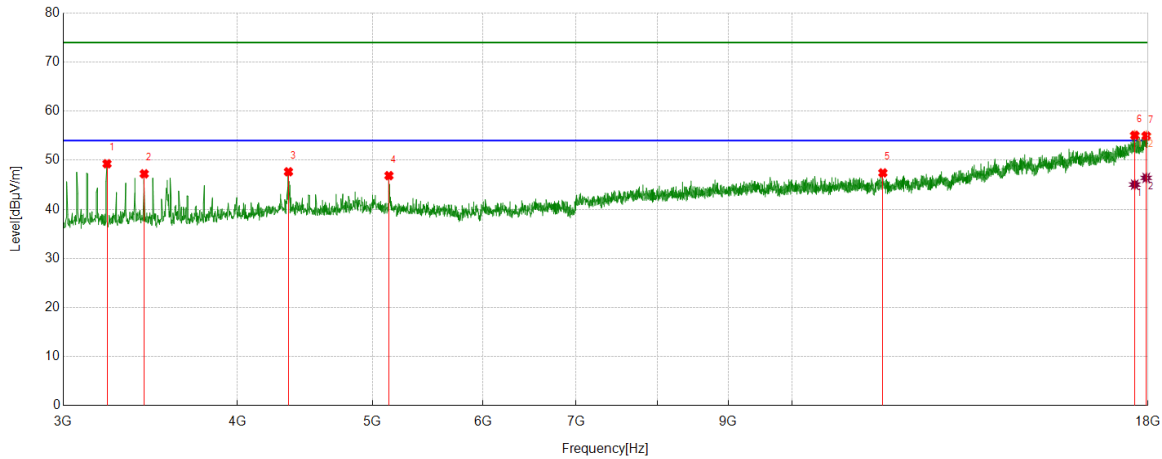
No.	Frequency	Reading Level	Correct Factor	Result	Limit	Margin	Remark
	[MHz]	[dBuV]	[dB/m]	[dBuV/m]	[dBuV/m]	[dB]	
1	3071.2589	58.47	-9.90	48.57	74.00	-25.43	Horizontal
2	3429.4287	57.69	-9.37	48.32	74.00	-25.68	Horizontal
3	3686.3358	54.92	-8.24	46.68	74.00	-27.32	Horizontal
4	4355.7945	53.03	-5.73	47.30	74.00	-26.70	Horizontal
5	5147.1434	52.28	-4.12	48.16	74.00	-25.84	Horizontal
6	17733.7167	37.03	17.60	54.63	74.00	-19.37	Horizontal
7	17906.2383	36.09	19.14	55.23	74.00	-18.77	Horizontal

AV Result:

No.	Frequency	Reading Level	Correct Factor	Result	Limit	Margin	Remark
	[MHz]	[dBuV]	[dB/m]	[dBuV/m]	[dBuV/m]	[dB]	
1	17733.7167	26.51	17.60	44.11	54.00	-9.89	Horizontal
2	17906.2383	26.38	19.14	45.52	54.00	-8.48	Horizontal

- Note: 1. Measurement = Reading Level + Correct Factor,
Correct Factor = Antenna Factor + Loss (Cable + Filter) – Amplifier Gain.
- If Peak Result complies with AV limit, AV Result is deemed to comply with AV limit.
 - Peak detector: RBW: 1 MHz, VBW: 3 MHz.
 - Average detector: RBW: 1 MHz, VBW: 1/T MHz(refer to clause 7.1.).
 - For above 3GHz part, filter losses were only considered in the spurious frequency bands and the authorized band was not corrected for HPF losses.
 - Only the worst case emission was recorded, if it complies with the limit, the other emissions deemed to comply with the limit.

Test Mode	Channel	Polarization	Verdict
11G	MCH	Vertical	PASS



PK Result:

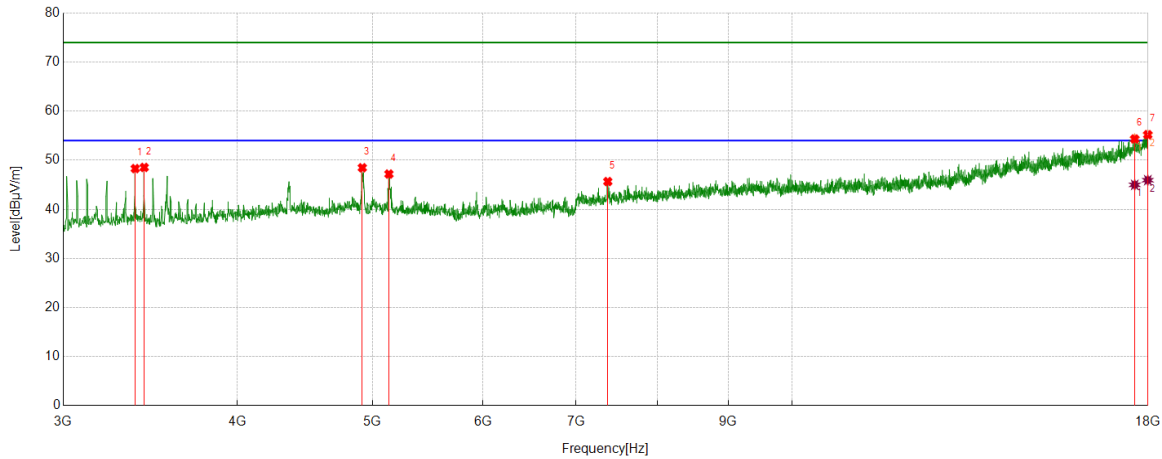
No.	Frequency	Reading Level	Correct Factor	Result	Limit	Margin	Remark
	[MHz]	[dBuV]	[dB/m]	[dBuV/m]	[dBuV/m]	[dB]	
1	3225.0281	58.54	-9.26	49.28	74.00	-24.72	Vertical
2	3429.4287	56.60	-9.37	47.23	74.00	-26.77	Vertical
3	4352.044	53.36	-5.71	47.65	74.00	-26.35	Vertical
4	5137.7672	50.53	-3.67	46.86	74.00	-27.14	Vertical
5	11616.7021	41.71	5.71	47.42	74.00	-26.58	Vertical
6	17609.9512	37.48	17.60	55.08	74.00	-18.92	Vertical
7	17947.4934	36.54	18.43	54.97	74.00	-19.03	Vertical

AV Result:

No.	Frequency	Reading Level	Correct Factor	Result	Limit	Margin	Remark
	[MHz]	[dBuV]	[dB/m]	[dBuV/m]	[dBuV/m]	[dB]	
1	17609.9512	27.44	17.60	45.04	54.00	-8.96	Vertical
2	17947.4934	27.98	18.43	46.41	54.00	-7.59	Vertical

- Note: 1. Measurement = Reading Level + Correct Factor,
Correct Factor = Antenna Factor + Loss (Cable + Filter) – Amplifier Gain.
- If Peak Result complies with AV limit, AV Result is deemed to comply with AV limit.
 - Peak detector: RBW: 1 MHz, VBW: 3 MHz.
 - Average detector: RBW: 1 MHz, VBW: 1/T MHz(refer to clause 7.1.).
 - For above 3GHz part, filter losses were only considered in the spurious frequency bands and the authorized band was not corrected for HPF losses.
 - Only the worst case emission was recorded, if it complies with the limit, the other emissions deemed to comply with the limit.

Test Mode	Channel	Polarization	Verdict
11G	HCH	Horizontal	PASS



PK Result:

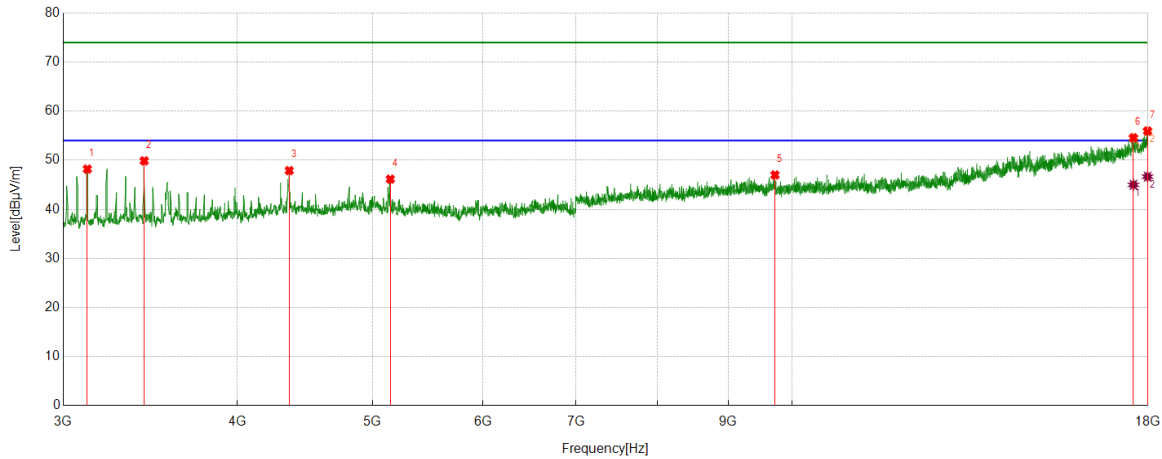
No.	Frequency	Reading Level	Correct Factor	Result	Limit	Margin	Remark
	[MHz]	[dBuV]	[dB/m]	[dBuV/m]	[dBuV/m]	[dB]	
1	3378.7974	57.75	-9.45	48.30	74.00	-25.70	Horizontal
2	3429.4287	57.91	-9.37	48.54	74.00	-25.46	Horizontal
3	4916.4896	52.34	-3.87	48.47	74.00	-25.53	Horizontal
4	5137.7672	50.86	-3.67	47.19	74.00	-26.81	Horizontal
5	7374.9219	45.62	0.04	45.66	74.00	-28.34	Horizontal
6	17609.9512	36.74	17.60	54.34	74.00	-19.66	Horizontal
7	17994.3743	36.55	18.66	55.21	74.00	-18.79	Horizontal

AV Result:

No.	Frequency	Reading Level	Correct Factor	Result	Limit	Margin	Remark
	[MHz]	[dBuV]	[dB/m]	[dBuV/m]	[dBuV/m]	[dB]	
1	17609.9512	27.39	17.60	44.99	54.00	-9.01	Horizontal
2	17994.3743	27.28	18.66	45.94	54.00	-8.06	Horizontal

- Note: 1. Measurement = Reading Level + Correct Factor,
Correct Factor = Antenna Factor + Loss (Cable + Filter) – Amplifier Gain.
- If Peak Result complies with AV limit, AV Result is deemed to comply with AV limit.
 - Peak detector: RBW: 1 MHz, VBW: 3 MHz.
 - Average detector: RBW: 1 MHz, VBW: 1/T MHz(refer to clause 7.1.).
 - For above 3GHz part, filter losses were only considered in the spurious frequency bands and the authorized band was not corrected for HPF losses.
 - Only the worst case emission was recorded, if it complies with the limit, the other emissions deemed to comply with the limit.

Test Mode	Channel	Polarization	Verdict
11G	HCH	Vertical	PASS



PK Result:

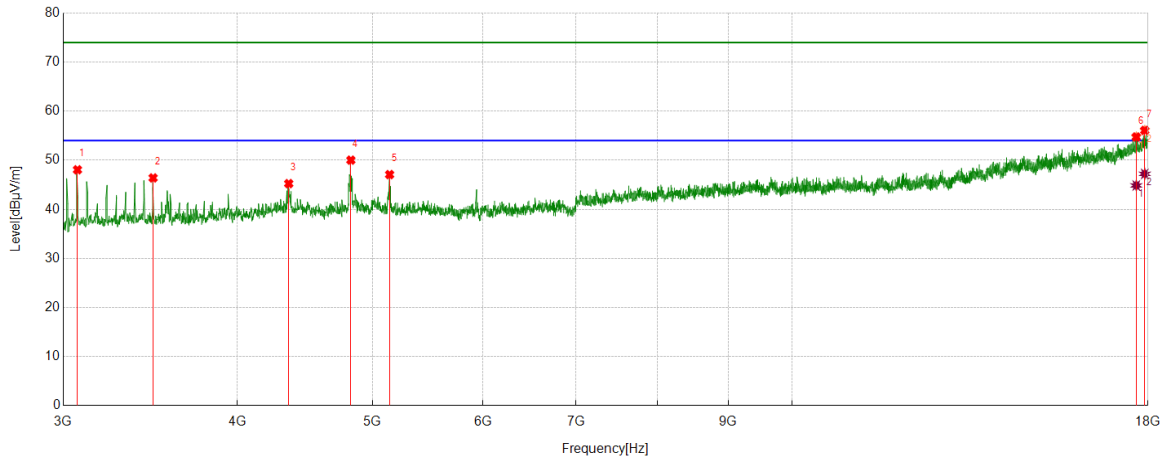
No.	Frequency	Reading Level	Correct Factor	Result	Limit	Margin	Remark
	[MHz]	[dBuV]	[dB/m]	[dBuV/m]	[dBuV/m]	[dB]	
1	3121.8902	58.26	-10.06	48.20	74.00	-25.80	Vertical
2	3429.4287	59.25	-9.37	49.88	74.00	-24.12	Vertical
3	4357.6697	53.65	-5.75	47.90	74.00	-26.10	Vertical
4	5149.0186	50.37	-4.22	46.15	74.00	-27.85	Vertical
5	9720.8401	43.29	3.71	47.00	74.00	-27.00	Vertical
6	17572.4466	37.29	17.27	54.56	74.00	-19.44	Vertical
7	17986.8734	37.35	18.60	55.95	74.00	-18.05	Vertical

AV Result:

No.	Frequency	Reading Level	Correct Factor	Result	Limit	Margin	Remark
	[MHz]	[dBuV]	[dB/m]	[dBuV/m]	[dBuV/m]	[dB]	
1	17572.4466	27.72	17.27	44.99	54.00	-9.01	Vertical
2	17986.8734	28.05	18.60	46.65	54.00	-7.35	Vertical

- Note: 1. Measurement = Reading Level + Correct Factor,
Correct Factor = Antenna Factor + Loss (Cable + Filter) – Amplifier Gain.
- If Peak Result complies with AV limit, AV Result is deemed to comply with AV limit.
 - Peak detector: RBW: 1 MHz, VBW: 3 MHz.
 - Average detector: RBW: 1 MHz, VBW: 1/T MHz(refer to clause 7.1.).
 - For above 3GHz part, filter losses were only considered in the spurious frequency bands and the authorized band was not corrected for HPF losses.
 - Only the worst case emission was recorded, if it complies with the limit, the other emissions deemed to comply with the limit.

Test Mode	Channel	Polarization	Verdict
11N HT20	LCH	Horizontal	PASS



PK Result:

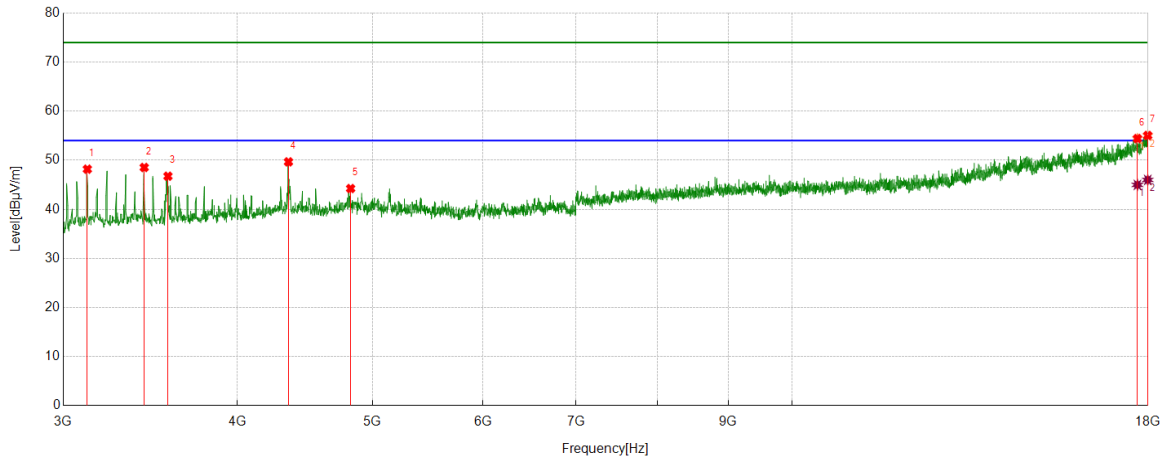
No.	Frequency	Reading Level	Correct Factor	Result	Limit	Margin	Remark
	[MHz]	[dBuV]	[dB/m]	[dBuV/m]	[dBuV/m]	[dB]	
1	3071.2589	57.96	-9.90	48.06	74.00	-25.94	Horizontal
2	3480.06	55.35	-8.95	46.40	74.00	-27.60	Horizontal
3	4353.9192	50.96	-5.72	45.24	74.00	-28.76	Horizontal
4	4824.6031	54.02	-4.00	50.02	74.00	-23.98	Horizontal
5	5143.3929	51.00	-3.92	47.08	74.00	-26.92	Horizontal
6	17654.9569	37.00	17.74	54.74	74.00	-19.26	Horizontal
7	17904.363	36.90	19.18	56.08	74.00	-17.92	Horizontal

AV Result:

No.	Frequency	Reading Level	Correct Factor	Result	Limit	Margin	Remark
	[MHz]	[dBuV]	[dB/m]	[dBuV/m]	[dBuV/m]	[dB]	
1	17654.9569	27.12	17.74	44.86	54.00	-9.14	Horizontal
2	17904.363	28.04	19.18	47.22	54.00	-6.78	Horizontal

- Note: 1. Measurement = Reading Level + Correct Factor,
Correct Factor = Antenna Factor + Loss (Cable + Filter) – Amplifier Gain.
- If Peak Result complies with AV limit, AV Result is deemed to comply with AV limit.
 - Peak detector: RBW: 1 MHz, VBW: 3 MHz.
 - Average detector: RBW: 1 MHz, VBW: 1/T MHz(refer to clause 7.1.).
 - For above 3GHz part, filter losses were only considered in the spurious frequency bands and the authorized band was not corrected for HPF losses.
 - Only the worst case emission was recorded, if it complies with the limit, the other emissions deemed to comply with the limit.

Test Mode	Channel	Polarization	Verdict
11N HT20	LCH	Vertical	PASS



PK Result:

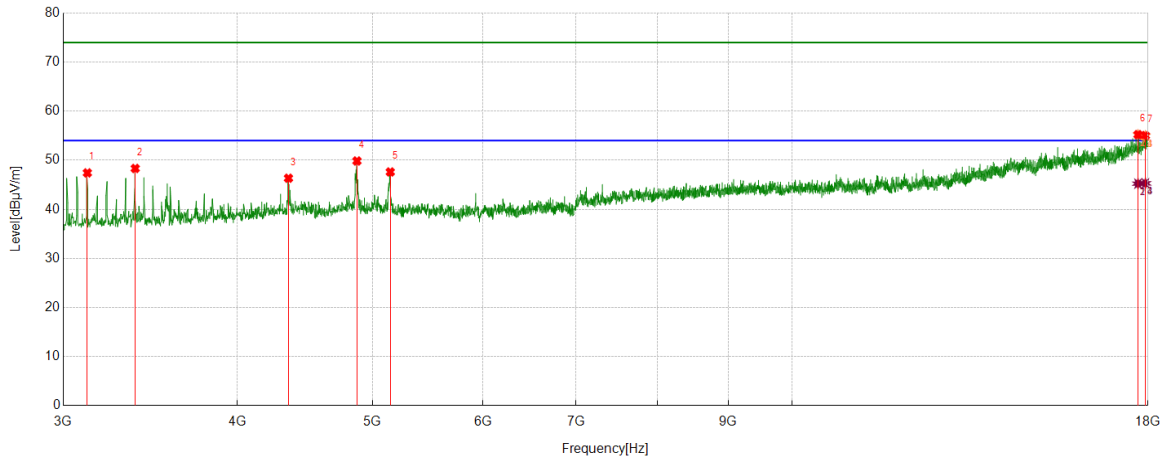
No.	Frequency	Reading Level	Correct Factor	Result	Limit	Margin	Remark
	[MHz]	[dBuV]	[dB/m]	[dBuV/m]	[dBuV/m]	[dB]	
1	3121.8902	58.24	-10.06	48.18	74.00	-25.82	Vertical
2	3429.4287	57.90	-9.37	48.53	74.00	-25.47	Vertical
3	3566.3208	55.49	-8.74	46.75	74.00	-27.25	Vertical
4	4352.044	55.38	-5.71	49.67	74.00	-24.33	Vertical
5	4822.7278	48.33	-4.09	44.24	74.00	-29.76	Vertical
6	17688.7111	36.91	17.51	54.42	74.00	-19.58	Vertical
7	17992.4991	36.42	18.63	55.05	74.00	-18.95	Vertical

AV Result:

No.	Frequency	Reading Level	Correct Factor	Result	Limit	Margin	Remark
	[MHz]	[dBuV]	[dB/m]	[dBuV/m]	[dBuV/m]	[dB]	
1	17688.7111	27.47	17.51	44.98	54.00	-9.02	Vertical
2	17992.4991	27.36	18.63	45.99	54.00	-8.01	Vertical

- Note: 1. Measurement = Reading Level + Correct Factor,
Correct Factor = Antenna Factor + Loss (Cable + Filter) – Amplifier Gain.
- If Peak Result complies with AV limit, AV Result is deemed to comply with AV limit.
 - Peak detector: RBW: 1 MHz, VBW: 3 MHz.
 - Average detector: RBW: 1 MHz, VBW: 1/T MHz(refer to clause 7.1.).
 - For above 3GHz part, filter losses were only considered in the spurious frequency bands and the authorized band was not corrected for HPF losses.
 - Only the worst case emission was recorded, if it complies with the limit, the other emissions deemed to comply with the limit.

Test Mode	Channel	Polarization	Verdict
11N HT20	MCH	Horizontal	PASS



PK Result:

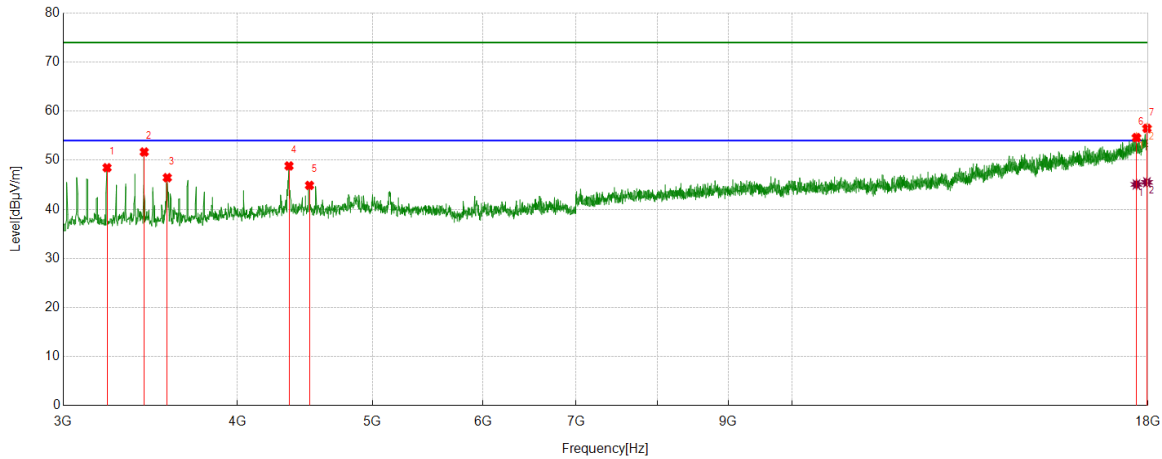
No.	Frequency	Reading Level	Correct Factor	Result	Limit	Margin	Remark
	[MHz]	[dBuV]	[dB/m]	[dBuV/m]	[dBuV/m]	[dB]	
1	3121.8902	57.48	-10.06	47.42	74.00	-26.58	Horizontal
2	3378.7974	57.78	-9.45	48.33	74.00	-25.67	Horizontal
3	4352.044	52.05	-5.71	46.34	74.00	-27.66	Horizontal
4	4873.3592	53.47	-3.62	49.85	74.00	-24.15	Horizontal
5	5149.0186	51.83	-4.22	47.61	74.00	-26.39	Horizontal
6	17705.5882	37.44	17.78	55.22	74.00	-18.78	Horizontal
7	17923.1154	36.31	18.71	55.02	74.00	-18.98	Horizontal

AV Result:

No.	Frequency	Reading Level	Correct Factor	Result	Limit	Margin	Remark
	[MHz]	[dBuV]	[dB/m]	[dBuV/m]	[dBuV/m]	[dB]	
1	17705.5882	27.45	17.78	45.23	54.00	-8.77	Horizontal
2	17923.1154	26.59	18.71	45.30	54.00	-8.70	Horizontal

- Note: 1. Measurement = Reading Level + Correct Factor,
Correct Factor = Antenna Factor + Loss (Cable + Filter) – Amplifier Gain.
- If Peak Result complies with AV limit, AV Result is deemed to comply with AV limit.
 - Peak detector: RBW: 1 MHz, VBW: 3 MHz.
 - Average detector: RBW: 1 MHz, VBW: 1/T MHz(refer to clause 7.1.).
 - For above 3GHz part, filter losses were only considered in the spurious frequency bands and the authorized band was not corrected for HPF losses.
 - Only the worst case emission was recorded, if it complies with the limit, the other emissions deemed to comply with the limit.

Test Mode	Channel	Polarization	Verdict
11N HT20	MCH	Vertical	PASS



PK Result:

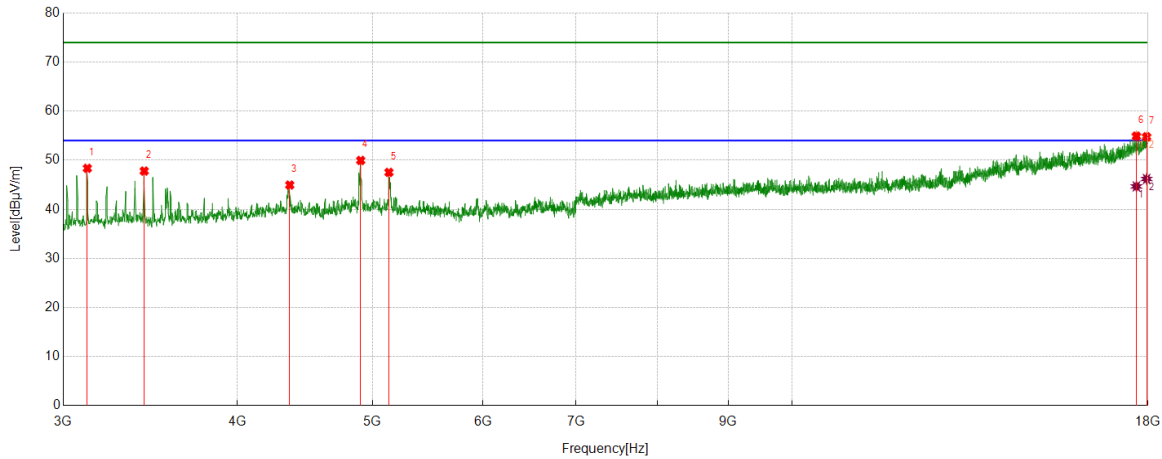
No.	Frequency	Reading Level	Correct Factor	Result	Limit	Margin	Remark
	[MHz]	[dBuV]	[dB/m]	[dBuV/m]	[dBuV/m]	[dB]	
1	3225.0281	57.74	-9.26	48.48	74.00	-25.52	Vertical
2	3429.4287	61.05	-9.37	51.68	74.00	-22.32	Vertical
3	3562.5703	55.26	-8.81	46.45	74.00	-27.55	Vertical
4	4355.7945	54.57	-5.73	48.84	74.00	-25.16	Vertical
5	4505.8132	50.18	-5.30	44.88	74.00	-29.12	Vertical
6	17660.5826	36.86	17.75	54.61	74.00	-19.39	Vertical
7	17969.9962	37.80	18.70	56.50	74.00	-17.50	Vertical

AV Result:

No.	Frequency	Reading Level	Correct Factor	Result	Limit	Margin	Remark
	[MHz]	[dBuV]	[dB/m]	[dBuV/m]	[dBuV/m]	[dB]	
1	17660.5826	27.32	17.75	45.07	54.00	-8.93	Vertical
2	17969.9962	26.80	18.70	45.50	54.00	-8.50	Vertical

- Note: 1. Measurement = Reading Level + Correct Factor,
Correct Factor = Antenna Factor + Loss (Cable + Filter) – Amplifier Gain.
- If Peak Result complies with AV limit, AV Result is deemed to comply with AV limit.
 - Peak detector: RBW: 1 MHz, VBW: 3 MHz.
 - Average detector: RBW: 1 MHz, VBW: 1/T MHz(refer to clause 7.1.).
 - For above 3GHz part, filter losses were only considered in the spurious frequency bands and the authorized band was not corrected for HPF losses.
 - Only the worst case emission was recorded, if it complies with the limit, the other emissions deemed to comply with the limit.

Test Mode	Channel	Polarization	Verdict
11N HT20	HCH	Horizontal	PASS



PK Result:

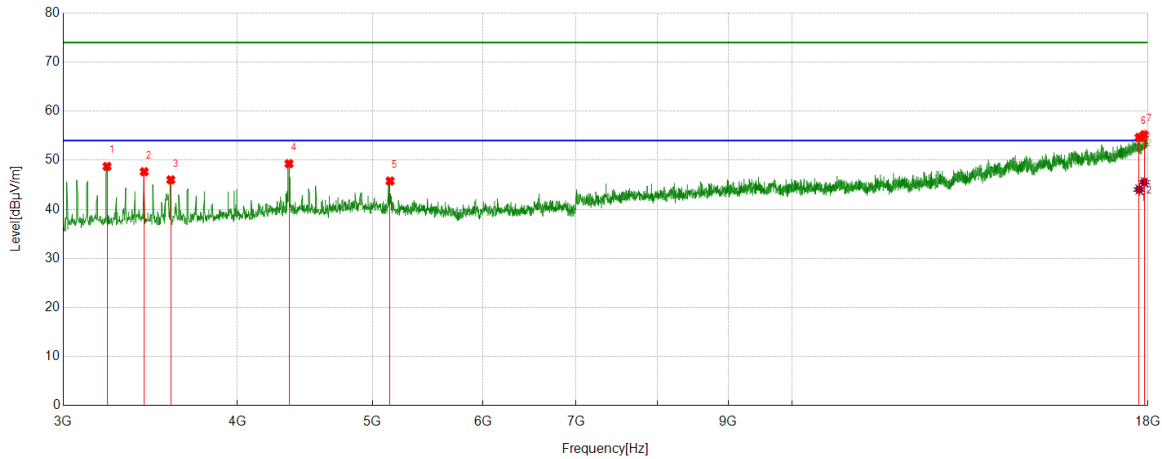
No.	Frequency	Reading Level	Correct Factor	Result	Limit	Margin	Remark
	[MHz]	[dBuV]	[dB/m]	[dBuV/m]	[dBuV/m]	[dB]	
1	3121.8902	58.42	-10.06	48.36	74.00	-25.64	Horizontal
2	3429.4287	57.17	-9.37	47.80	74.00	-26.20	Horizontal
3	4361.4202	50.69	-5.74	44.95	74.00	-29.05	Horizontal
4	4903.3629	53.76	-3.80	49.96	74.00	-24.04	Horizontal
5	5137.7672	51.20	-3.67	47.53	74.00	-26.47	Horizontal
6	17658.7073	37.14	17.77	54.91	74.00	-19.09	Horizontal
7	17958.7448	36.32	18.45	54.77	74.00	-19.23	Horizontal

AV Result:

No.	Frequency	Reading Level	Correct Factor	Result	Limit	Margin	Remark
	[MHz]	[dBuV]	[dB/m]	[dBuV/m]	[dBuV/m]	[dB]	
1	17658.7073	26.89	17.77	44.66	54.00	-9.34	Horizontal
2	17958.7448	27.74	18.45	46.19	54.00	-7.81	Horizontal

- Note: 1. Measurement = Reading Level + Correct Factor,
Correct Factor = Antenna Factor + Loss (Cable + Filter) – Amplifier Gain.
- If Peak Result complies with AV limit, AV Result is deemed to comply with AV limit.
 - Peak detector: RBW: 1 MHz, VBW: 3 MHz.
 - Average detector: RBW: 1 MHz, VBW: 1/T MHz(refer to clause 7.1.).
 - For above 3GHz part, filter losses were only considered in the spurious frequency bands and the authorized band was not corrected for HPF losses.
 - Only the worst case emission was recorded, if it complies with the limit, the other emissions deemed to comply with the limit.

Test Mode	Channel	Polarization	Verdict
11N HT20	HCH	Vertical	PASS



PK Result:

No.	Frequency	Reading Level	Correct Factor	Result	Limit	Margin	Remark
	[MHz]	[dBuV]	[dB/m]	[dBuV/m]	[dBuV/m]	[dB]	
1	3225.0281	58.00	-9.26	48.74	74.00	-25.26	Vertical
2	3429.4287	57.03	-9.37	47.66	74.00	-26.34	Vertical
3	3583.1979	54.74	-8.72	46.02	74.00	-27.98	Vertical
4	4355.7945	55.03	-5.73	49.30	74.00	-24.70	Vertical
5	5147.1434	49.89	-4.12	45.77	74.00	-28.23	Vertical
6	17741.2177	37.06	17.60	54.66	74.00	-19.34	Vertical
7	17891.2364	35.94	19.25	55.19	74.00	-18.81	Vertical

AV Result:

No.	Frequency	Reading Level	Correct Factor	Result	Limit	Margin	Remark
	[MHz]	[dBuV]	[dB/m]	[dBuV/m]	[dBuV/m]	[dB]	
1	17741.2177	26.43	17.60	44.03	54.00	-9.97	Vertical
2	17891.2364	26.27	19.25	45.52	54.00	-8.48	Vertical

- Note: 1. Measurement = Reading Level + Correct Factor,
Correct Factor = Antenna Factor + Loss (Cable + Filter) – Amplifier Gain.
- If Peak Result complies with AV limit, AV Result is deemed to comply with AV limit.
 - Peak detector: RBW: 1 MHz, VBW: 3 MHz.
 - Average detector: RBW: 1 MHz, VBW: 1/T MHz(refer to clause 7.1.).
 - For above 3GHz part, filter losses were only considered in the spurious frequency bands and the authorized band was not corrected for HPF losses.
 - Only the worst case emission was recorded, if it complies with the limit, the other emissions deemed to comply with the limit.