



—LEETOP TECH CO., LTD.—

# User Guide



## Leetop\_ALP\_608\_F\_ User\_Guide\_V1.0



Leetop Technology (Shenzhen) Co., Ltd..  
<http://www.leetop.top>

### Leetop\_ALP\_608\_F\_User\_Guide\_V1.0

#### Notice

Service and Support

Technical Support

Warranties

Warranty content:

Packing List

#### DOCUMENT CHANGE HISTORY

Leetop\_ALP\_608\_F

#### Product description

Brief

Product specifications

Processor module

I/O

Power Supply

Environmental

Install Dimension

#### Leetop\_ALP\_608\_F Interface Description

Front interface

Back interface

Board Interface Description

Carrier plate specifications

#### Function Introduction

Operating system setup

1.Hardware preparation

2.Environment requirements

3.Recovery mode

4. Install system image

5.Switching working modes

6. Install Jetpack components

Use of xshell

System configuration

View System Version

Make a backup image

Installation of Jtop tools

Developer Tools

**JetPack**

**L4T**

**DeepStream SDK on Jetson**

**Isaac SDK**

Key Features of Jetpack

Sample Applications

Developer Tools

## Notice

---

- Please read manual carefully before install, operate, or transport Leetop device.
- Ensure that the correct power range is being used before powering the device.
- Avoid hot plugging.
- To properly turn off the power, please shut down the Ubuntu system first, and then cut off the power. Due to the particularity of the Ubuntu system, on the Nvidia developer kit, if the power is turned off when the startup is not completed, there will be a 0.03% probability of abnormality, which will cause the device to fail to start. Due to the use of the Ubuntu system, the same problem also exists on the Leetop device.
- Do not use cables or connectors other than described in this manual.
- Do not use Leetop device near strong magnetic fields.
- Backup your data before transportation or Leetop device is idle.
- Recommend to transport Leetop device in its original packaging.
- Warn! This is a Class A product, in a living environment this product may cause radio interference. In this case, the user may be required to take practicable measures against the interference.
- Working in a high temperature environment for a long time, it is not recommended to touch the shell to avoid burns.
- Dismantling the machine without consent is regarded as a waiver of the warranty.



**Careful scald at high temperature**

# Service and Support

## Technical Support

Leetop is glad to help you with any questions you may have about our product, or about the use of the technology for your application. The fastest way is sending us an email: [service@leetop.top](mailto:service@leetop.top)

## Warranties

Warranty period: One year from the date of delivery.

### Warranty content:

Leetop warrants the product manufactured by us to be free from defects in material and workmanship during warranty period. Please contact [service@leetop.top](mailto:service@leetop.top) for return material authorization (RMA) prior to returning any items for repair or exchange. The product must be returned in its original packaging to prevent damage during shipping. Before returning any product for repair, it is recommended to back up your data and delete any confidential or personal data.

## Packing List

- Leetop\_ALP\_608\_F

### Non-standard equipment:

- Power adapter x 1
- Power cord x 1

## DOCUMENT CHANGE HISTORY

Document	Version	date	Description of Change
Leetop_ALP_608_F	V1.0	20231017	Initial release

# Leetop\_ALP\_608\_F

---

## Product description

---

### Brief

Leetop\_ALP\_608\_F is an embedded artificial intelligence computer that can provide up to 70/100 TOPS of computing power to many terminal devices. Leetop\_ALP\_608\_F provides fast active heat dissipation design and can meet industrial standards such as shock resistance and anti-static. At the same time, Leetop\_ALP\_608\_F has rich interfaces and high cost performance.



# Product specifications

## Processor module

Processor	Jetson Orin NX 8GB	Jetson Orin NX 16GB
<b>AI Performance</b>	70 TOPS	100 TOPS
<b>GPU</b>	1024-core NVIDIA Ampere GPU with 32 Tensor Cores	1024-core NVIDIA Ampere GPU with 32 Tensor Cores
<b>CPU</b>	6-core NVIDIA Arm® Cortex A78AE v8.2 64-bit CPU 1.5MB L2 + 4MB L3	8-core NVIDIA Arm® Cortex A78AE v8.2 64-bit CPU 2MB L2 + 4MB L3
<b>Memory</b>	8 GB 128-bit LPDDR5 102.4 GB/s	16 GB 128-bit LPDDR5 102.4 GB/s
<b>Storage</b>	(Supports external NVMe)	(Supports external NVMe)
<b>Power</b>	10W - 20W	10W - 25W
<b>PCIe</b>	1 x4 + 3 x1 (PCIe Gen4, Root Port & Endpoint)	1 x4 + 3 x1 (PCIe Gen4, Root Port & Endpoint)
<b>CSI Camera</b>	Up to 4 cameras (8 via virtual channels***) 8 lanes MIPI CSI-2 D-PHY 2.1 (up to 20Gbps)	Up to 4 cameras (8 via virtual channels***) 8 lanes MIPI CSI-2D-PHY 2.1 (up to 20Gbps)
<b>Video Encode</b>	1x4K60   3x4K30   6x1080p60   12x1080p30(H.265) 1x4K60   2x4K30   5x1080p30   11x1080p30(H.264)	1x 4K60   3x 4K30   6x 1080p60   12x 1080p30 (H.265) 1x 4K60   2x 4K30   5x 1080p60   11x 1080p30 (H.264)
<b>Video Decode</b>	1x8K30   2x4K60   4x4K30   9x1080p60   18x1080p30(H.265) 1x4K60   2x4K30   5x1080P60   11x1080P30(H.264)	1x 8K30   2x 4K60   4x 4K30   9x 1080p60   18x 1080p30 (H.265) 1x 4K60   2x 4K30   5x 1080p60   11x 1080p30 (H.264)
<b>Display</b>	1x 8K60 multi-mode DP 1.4a (+MST)/eDP1.4a/HDMI 2.1	1x 8K60 multi-mode DP 1.4a (+MST)/eDP1.4a/HDMI 2.1
<b>Networking</b>	10/100/1000 BASE-T Ethernet	10/100/1000 BASE-T Ethernet
<b>Mechanical</b>	69.6mm x 45mm 260-pin SO-DIMM connector	69.6mm x 45mm 260-pin SO-DIMM connector

Processor	Jetson Orin Nano 4GB	Jetson Orin Nano 8GB
<b>AI Performance</b>	20 TOPS	40 TOPS
<b>GPU</b>	512-core NVIDIA Ampere architecture GPU with 16 Tensor Cores	1024-core NVIDIA Ampere architecture GPU with 32 Tensor Cores
<b>CPU</b>	6-core Arm® Cortex®-A78AE v8.2 64-bit CPU 1.5MB L2 + 4MB L3	6-core Arm® Cortex®-A78AE v8.2 64-bit CPU 1.5MB L2 + 4MB L3
<b>Memory</b>	4GB 64-bit LPDDR5 34 GB/s	8GB 128-bit LPDDR5 68 GB/s
<b>Storage</b>	(Supports external NVMe)	(Supports external NVMe)
<b>Power</b>	5W - 10W	7W - 15W
<b>PCIe</b>	1 x4 + 3 x1 (PCIe Gen3, Root Port, & Endpoint)	1 x4 + 3 x1 (PCIe Gen3, Root Port, & Endpoint)
<b>CSI Camera</b>	Up to 4 cameras (8 via virtual channels***) 8 lanes MIPI CSI-2 D-PHY 2.1 (up to 20Gbps)	Up to 4 cameras (8 via virtual channels***) 8 lanes MIPI CSI-2 D-PHY 2.1 (up to 20Gbps)
<b>Video Encode</b>	1080p30 supported by 1-2 CPU cores	1080p30 supported by 1-2 CPU cores
<b>Video Decode</b>	1x 4K60 (H.265) 2x 4K30 (H.265) 5x 1080p60 (H.265) 11x 1080p30 (H.265)	1x 4K60 (H.265) 2x 4K30 (H.265) 5x 1080p60 (H.265) 11x 1080p30 (H.265)
<b>Display</b>	1x 4K30 multi-mode DP 1.2 (+MST)/eDP 1.4/HDMI 1.4**	1x 4K30 multi-mode DP 1.2 (+MST)/eDP 1.4/HDMI 1.4**
<b>Networking</b>	10/100/1000 BASE-T Ethernet	10/100/1000 BASE-T Ethernet
<b>Mechanical</b>	69.6mm x 45mm 260-pin SO-DIMM connector	69.6mm x 45mm 260-pin SO-DIMM connector

## I/O

Interface	Specification
Display	1x DP
Ethernet	2x Gigabit Ethernet (10/100/1000)
USB	4x USB 3.2 Type A (Integrated USB 2.0) 1x USB 2.0+3.2 Type C
M.2 KEY M	1x M.2 KEY M(SSD Interface) 1X M.2 KEY E(WIFI) Interface 1XM.2 KEY B(4G/5G) Interface
Camera	2X CSI Camera
FAN	1 x FAN(5V PWM)
RTC CON	1X3.0V RTC
CAN	1x CAN (FD)
Audio	1x3.5 Audio Jack 2X MIC 2X SPEAKER 1X SPEAKER FEEDBACK
Function CON	2X IIC; 1X SPI 7X IO 3.3V 2x UART 1X DEBUG 1X POWER 1X RESET 1X RECOVERY
Power Requirements	+9--+20V(MAX 60W) DC Input

## Power Supply

Power Supply	Specification
Input Type	DC
Input Voltage	+9--+20V(MAX 60W) DC Input

## Environmental

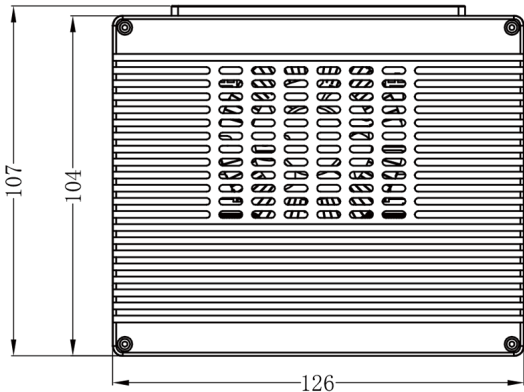
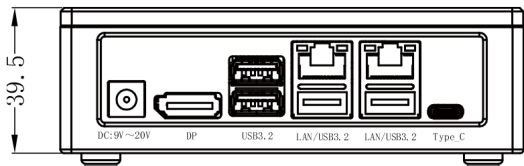
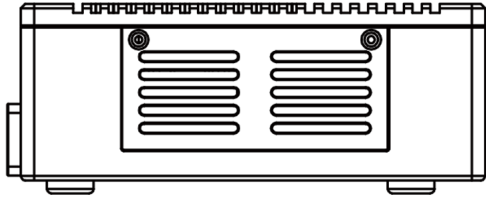
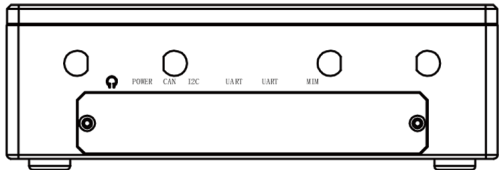
Environmental	Specification
Operating Temperature	-25 °C to +65°C
Storage temperature/humidity	-25°C-65°C 10%-90% Non condensation environment



# Install Dimension

Leetop\_ALP\_608\_F :

Dimensions as below:

Up view (Unit:mm)	Front view (Unit:mm)
	
Left view (Unit:mm)	Rear view(Unit:mm)
	

# Leetop\_ALP\_608\_F Interface Description

## Front interface



*Leetop\_ALP\_608\_F Surface interface diagram*

Interface	Interface name	Interface description
Type-C	Type-C interface	1x USB 2.0+3.2 Type C
DP	DisplayPort	1x DP
USB	USB interface	4x USB 3.2 Type A (Integrated USB 2.0)
RJ45	Ethernet Gigabit port	2x Gigabit Ethernet (10/100/1000)
DC	DC power interface	+9--+20V(MAX 60W) DC Input

Note: This product starts automatically when plugged in

## Back interface



*Leetop\_ALP\_608\_F Back interface diagram*

Interface	Interface name	Interface description
Multifunctional expansion port	Multifunctional interface	Connected I/O Spi
UART Connect	UART	UART communication device
IIC Connect	I2C	I2C device
CAN Connect	CAN	Connect to CAN device
POWER KEY	switch	On/off button interface
Audio Jack	Audio Jack	Can be connected to 3.5 American standard headphones

# Board Interface Description

## Carrier plate specifications

Interface	Specification
PCB Size / Overall Size	101.5mm x 95mm
Display	1x DP
Ethernet	2x Gigabit Ethernet (10/100/1000)
USB	4x USB 3.2 Type A (Integrated USB 2.0) 1x USB 2.0+3.2 Type C
M.2 KEY M	1x M.2 KEY M(SSD Interface) 1X M.2 KEY E(WIFI) Interface 1XM.2 KEY B(4G/5G) Interface
Camera	2X CSI Camera
FAN	1 x FAN(5V PWM)
RTC CON	1X3.0V RTC
CAN	1x CAN (FD)
Audio	1x3.5 Audio Jack 2X MIC 2X SPEAKER 1X SPEAKER FEEDBACK
Function CON	2X IIC; 1X SPI 7X IO 3.3V 2x UART 1X DEBUG 1X POWER 1X RESET 1X RECOVERY
Power Requirements	+9--+20V(MAX 60W) DC Input
Operating Temperature	-25 °C to +65 °C
Weight	0.10075KG
Warranty and Support	1 Year Warranty and Free Support

# Function Introduction

## Operating system setup


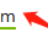
### 1. Hardware preparation

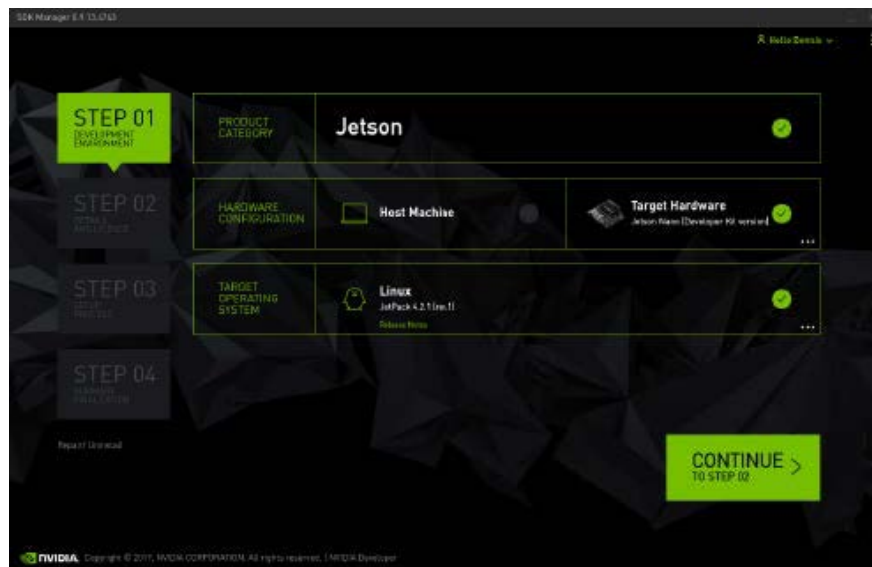
- Ubuntu 18.04 PC x1
- Type c data cable x1

### 2. Environment requirements

1. Download the system image package to the PC host of Ubuntu18.04 system: Programming steps:
  1. Use a USB cable to connect the USB Type-A of the Ubuntu18.04 system PC to the Type c of the Leetop\_ALP\_608\_F Development System;
  2. Power on the Leetop\_ALP\_608\_F Development System and enter Recovery mode;
  3. Open Nvidia-SDK-Manager on the PC, as shown in the figure below, select Jetson Orin NX/Orin NANO in the interface to download the Jetpack5.xx system image package and development tools, or download it from <https://developer.nvidia.com/embedded/downloads> Downloads the latest Jetson Linux release package and the sample file system of the Jetson Development Kit. (Jetson Linux Driver Package (L4T) )

### Downloads and Links

	Jetson Orin modules and developer kit	Jetson Xavier modules and developer kits
DRIVERS	<a href="#">Driver Package (BSP)</a> 	
	<a href="#">Sample Root Filesystem</a> 	



- 1 #If you cannot find the corresponding version using the latest SDK version, you can use this command to obtain it.
- 2 sdkmanager --archivedversions

4. Download supporting driver:

Link: <https://pan.baidu.com/s/1fXAcDyl7n5g1VKMc4FQSSw> Extraction code: oz9h

(Please download the corresponding driver file according to the actual needs of the device.)

For other information, please contact us: [service@leetop.top](mailto:service@leetop.top)

2. Unzip the downloaded image package and enter the Linux for Tegra(L4T) directory

```
1  sudo mkdir [$path] #Create a folder and freely name the path
2  cd [$path] #Enter folder
3  tar xf Jetson_Linux_R35.3.1_aarch64.tbz2
4  cd Linux_for_tegra/rootfs/
5  sudo tar xpf Tegra_Linux_Sample-Root-Filesystem_R35.3.1_aarch64.tbz2
6  cd ..
7  sudo ./apply_binaries.sh
8  sudo ./tools/l4t_flash_prerequisites.sh
9  #Replace Driver Package
10 sudo cp -r 608_xxx/Linux_for_tegra/* Linux_for_tegra/
```

3. Enter this command on a Linux host to install (flash) the Jetson version into the Jetson development kit.

Flash to NVMe:

```
1  #orin nx/orin nano flash to nvme
2  sudo ./tools/kernel_flash/l4t_initrd_flash.sh --external-device nvme0n1p1 \
3  -c tools/kernel_flash/flash_l4t_external.xml -p "-c
4  bootloader/t186ref/cfg/flash_t234_qspi.xml" \
   --showlogs --network usb0 jetson-orin-nano-devkit internal
```

Flash to USB:

```
1  #orin nx/orin nano flash to USB:
2  cd Linux_for_tegra/
3  sudo ./tools/kernel_flash/l4t_initrd_flash.sh --external-device sda1 \
4  -c tools/kernel_flash/flash_l4t_external.xml -p "-c
5  bootloader/t186ref/cfg/flash_t234_qspi.xml" \
   --showlogs --network usb0 jetson-orin-nano-devkit internal
```

Flash to SD:

```
1  #orin nx/orin nano flash to SD
2  sudo ./tools/kernel_flash/l4t_initrd_flash.sh --external-device mmcblk1p1 \
3  -c tools/kernel_flash/flash_l4t_external.xml -p "-c
4  bootloader/t186ref/cfg/flash_t234_qspi.xml" \
   --showlogs --network usb0 jetson-orin-nano-devkit internal
```

### 3.Recovery mode

Leetop\_ALP\_608\_F can update the system through USB, and the update needs to enter the USB Recovery mode. In USB Recovery mode, you can perform file system update, kernel update, boot loader update, BCT update and other operations.

Steps to enter Recovery Mode:

1. Power off the system, make sure to power off and not go into standby;
2. Connect the carrier and host using the USB Type C to USB Type A cable;
3. Power on the equipment;
4. After pressing the Recovery button and the Reset button for two seconds at the same time, first release the Reset button and then release the Recovery button to make it enter the Rec mode.
5. Open a terminal window on your host computer and enter command `lsusb`. The Jetson module is in Force Recovery Mode if you see the message:

```
1 | Bus <bbb> Device <ddd>: ID 0955: <nnnn> Nvidia Corp.
```

Where:

= `<bbb>` is any three-digit number

= `<ddd>` is any three-digit number

o `<nnnn>` is a four-digit number that represents the type of your Jetson module:

- `7023` for Jetson AGX Orin (P3701-0000 with 32GB)
- `7023` for Jetson AGX Orin (P3701-0005 with 64GB)
- `7023` for Jetson AGX Orin Industrial (P3701-0008 with 64GB)
- `7223` for Jetson AGX Orin (P3701-0004 with 32GB)
- `7323` for Jetson Orin NX (P3767-0000 with 16GB)
- `7423` for Jetson Orin NX (P3767-0001 with 8GB)
- `7523` for Jetson Orin Nano (P3767-0003 and P3767-0005 with 8GB)
- `7623` for Jetson Orin Nano (P3767-0004 with 4GB)
- `7019` for Jetson AGX Xavier (P2888-0001 with 16GB)
- `7019` for Jetson AGX Xavier (P2888-0004 with 32GB)
- `7019` for Jetson AGX Xavier (P2888-0005 with 64GB)
- `7019` for Jetson AGX Xavier Industrial (P2888-0008)
- `7e19` for Jetson Xavier NX (P3668)

Note: In the USB Recovery mode, the system will not start, and the serial port will not have debugging information output

## 4. Install system image

- a) Connect USB type-A of Ubuntu 18.04 Host to Type-c of Leetop\_ALP\_608\_F ;
- b) Power up Leetop\_ALP\_608\_F and enter Recovery mode(RCM);
- c) The PC Host enters the L4T directory and executes the flashing instruction :

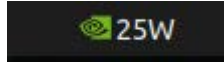
```
1 | cd Linux_for_tegra/  
2 | #orin nx/orin nano flash to nvme  
3 | sudo ./tools/kernel_flash/l4t_initrd_flash.sh --external-device nvme0n1p1 \  
4 | -c tools/kernel_flash/flash_l4t_external.xml -p "-c  
bootloader/t186ref/cfg/flash_t234_qspi.xml" \  
5 | --showlogs --network usb0 jetson-orin-nano-devkit internal
```

- d) After flashing, power on Leetop\_ALP\_608\_F again and log in to the system.



## 5. Switching working modes

After logging in to the system, you can click Operation Modification in the upper right corner of the system interface, as shown in the figure:



Or, enter the command in the terminal to switch:

```
1 | #Switch to mode 0, use the -q parameter to view the current mode
2 | sudo nvpmode1 -m 0
```

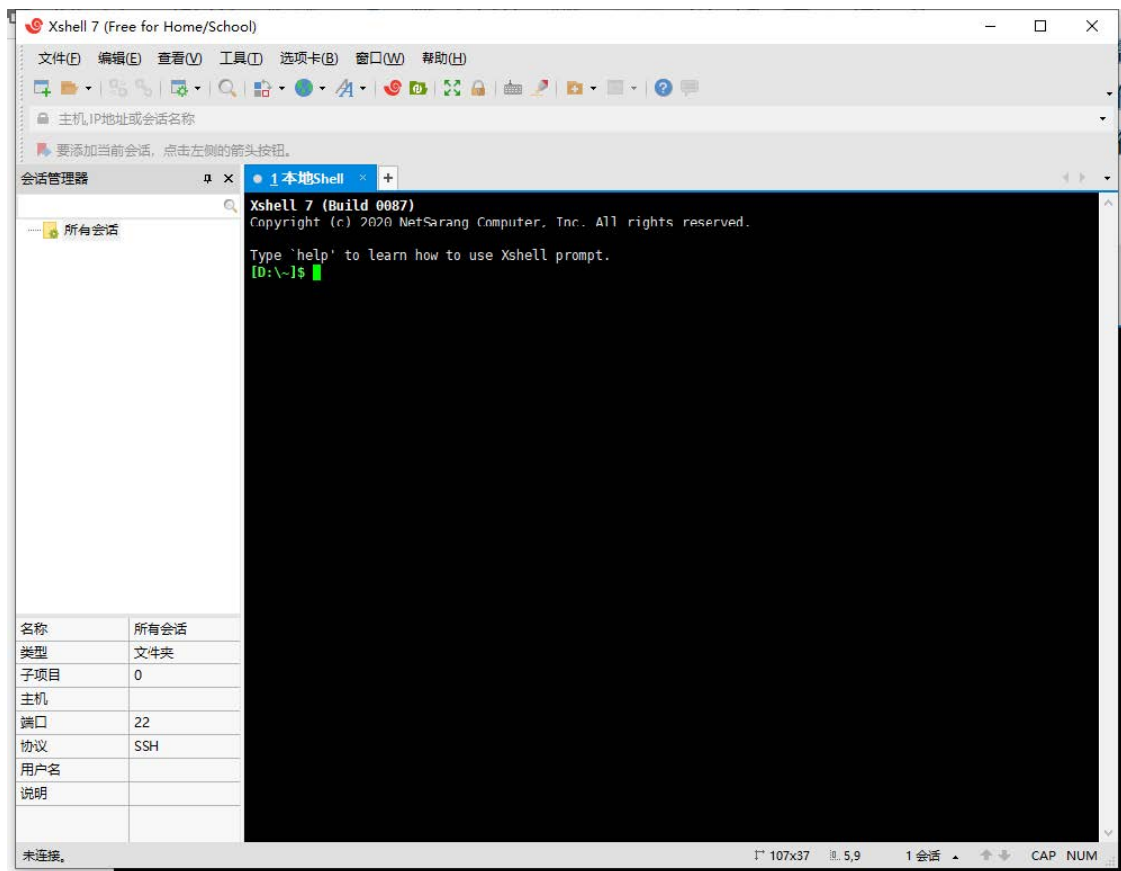
## 6. Install Jetpack components

```
1 | sudo apt update
2 | sudo reboot
3 | sudo install nvidia-jetpack
```

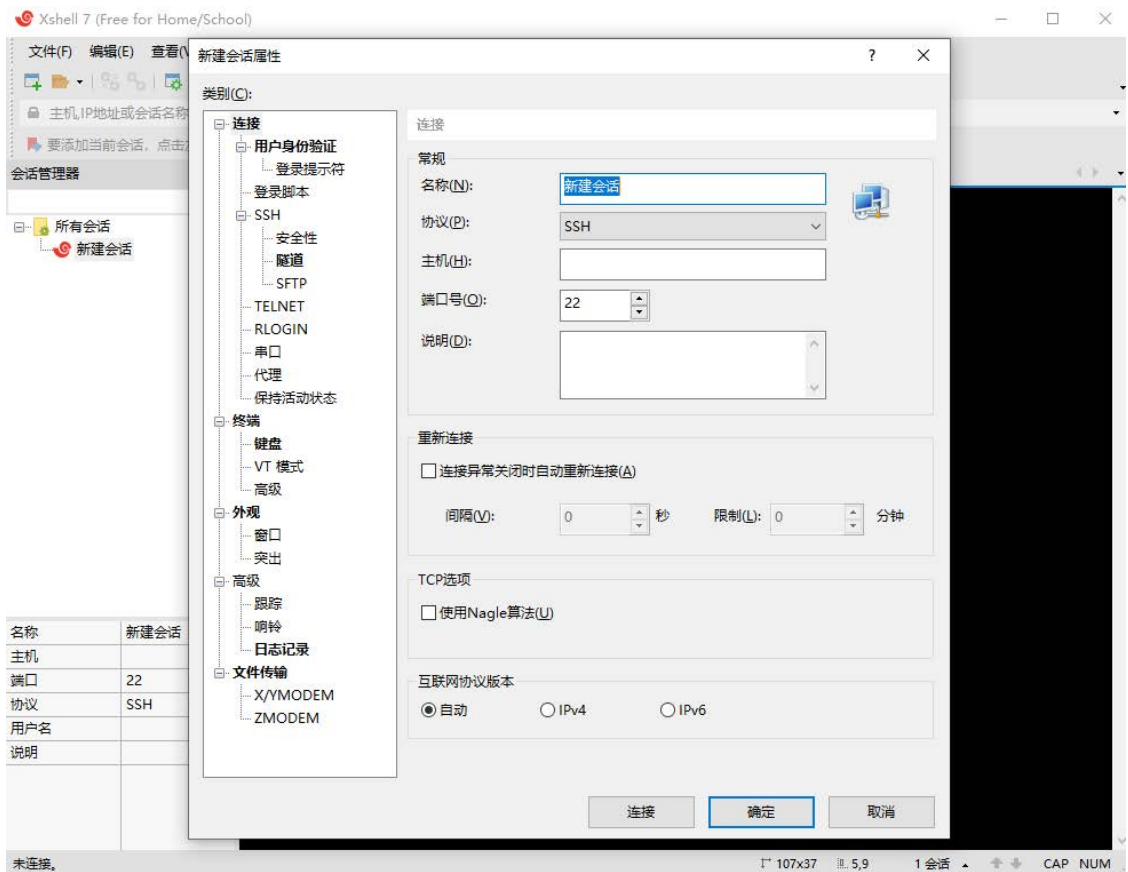
## Use of xshell

Xshell is a powerful security terminal emulation software, it supports SSH1, SSH2, and TELNET protocol of Microsoft Windows platform. Xshell's secure connection to remote hosts through the Internet and its innovative design and features help users enjoy their work in complex network environments. Xshell can be used to access servers under different remote systems under the Windows interface, so as to better achieve the purpose of remote control of the terminal. xshell is not necessary, but it can better assist us in using equipment. It can link your Windows system with your Ubuntu system, allowing you to operate your Linux system under Windows system. To install xshell, you can download and install it by searching Baidu on the Internet. (When the product cannot enter the desktop system, you can also use xshell to perform remote control and modify configuration errors).

- Open xshell

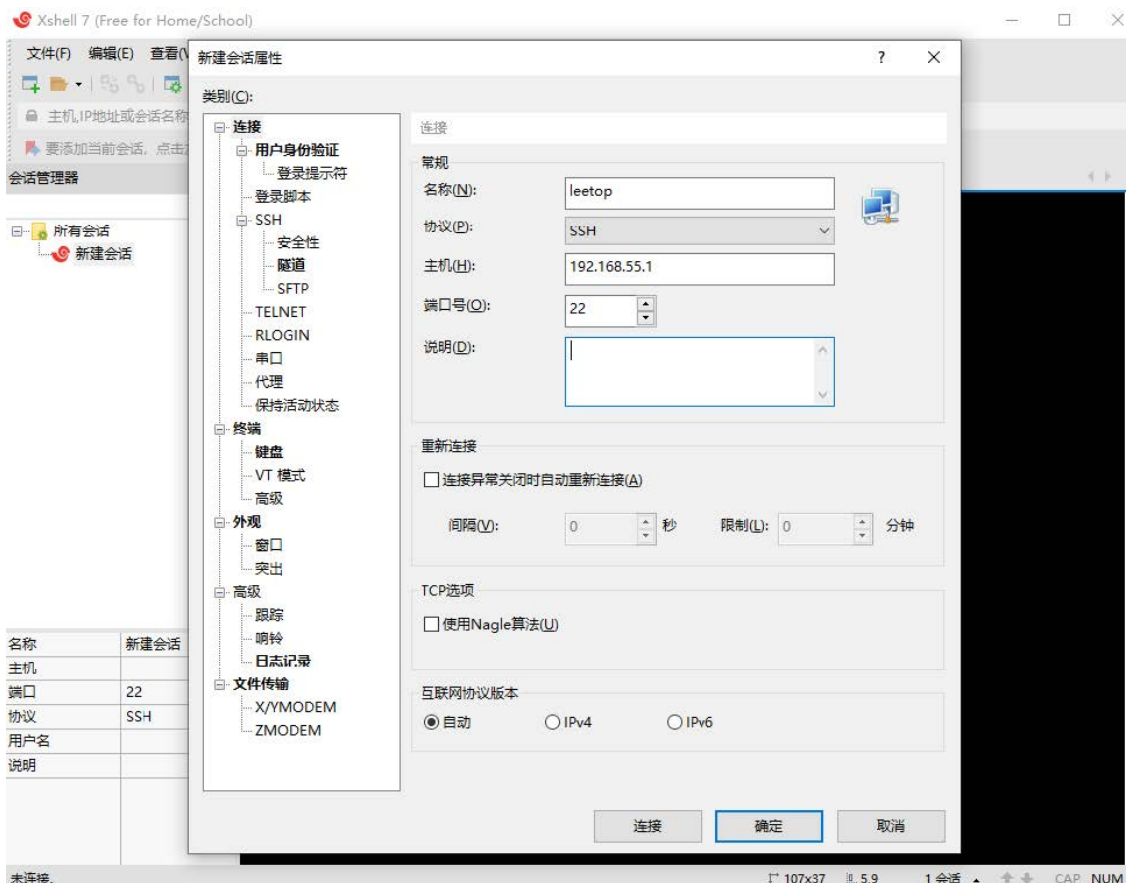


- Newly bulit

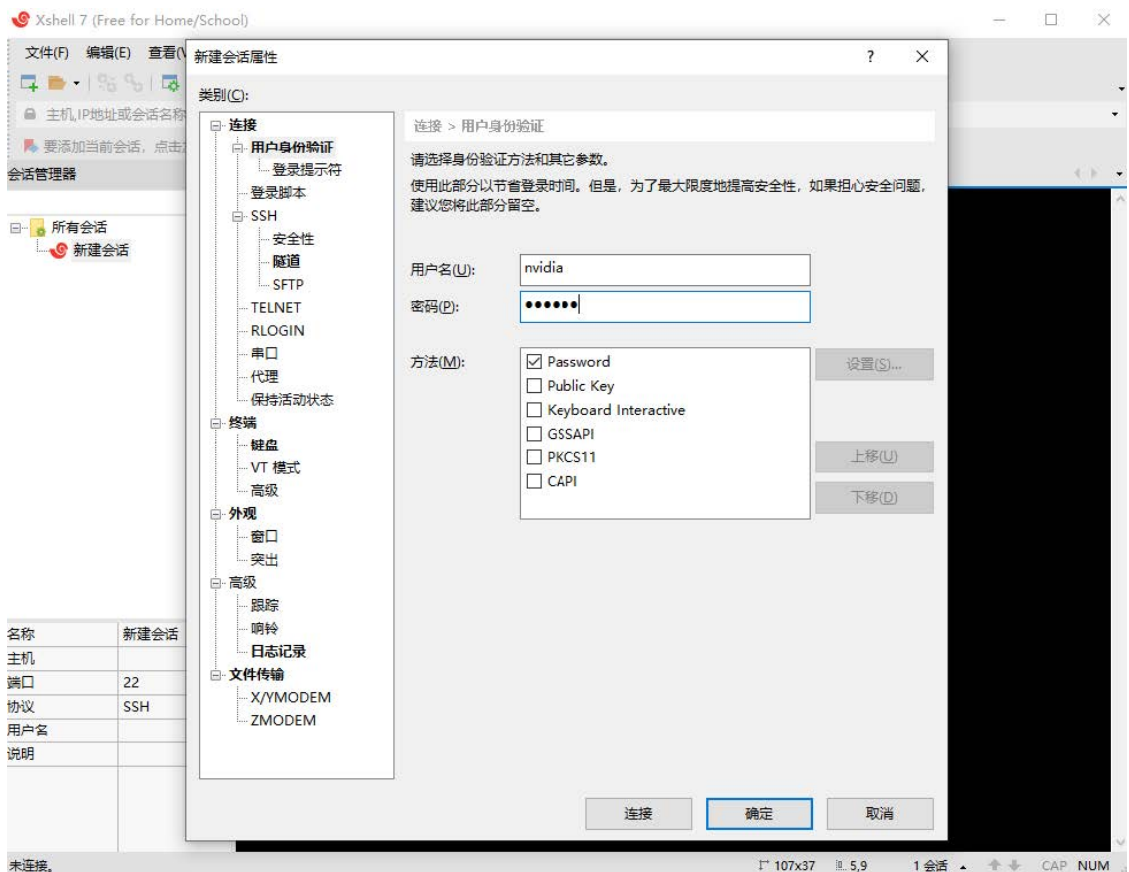


- Fill in the name and host ip(normally you can connect through the network ip, if you do not know the ip, you can connect the computer and the OTG port of the device through the usb data cable, fill in the fixed ip to connect)

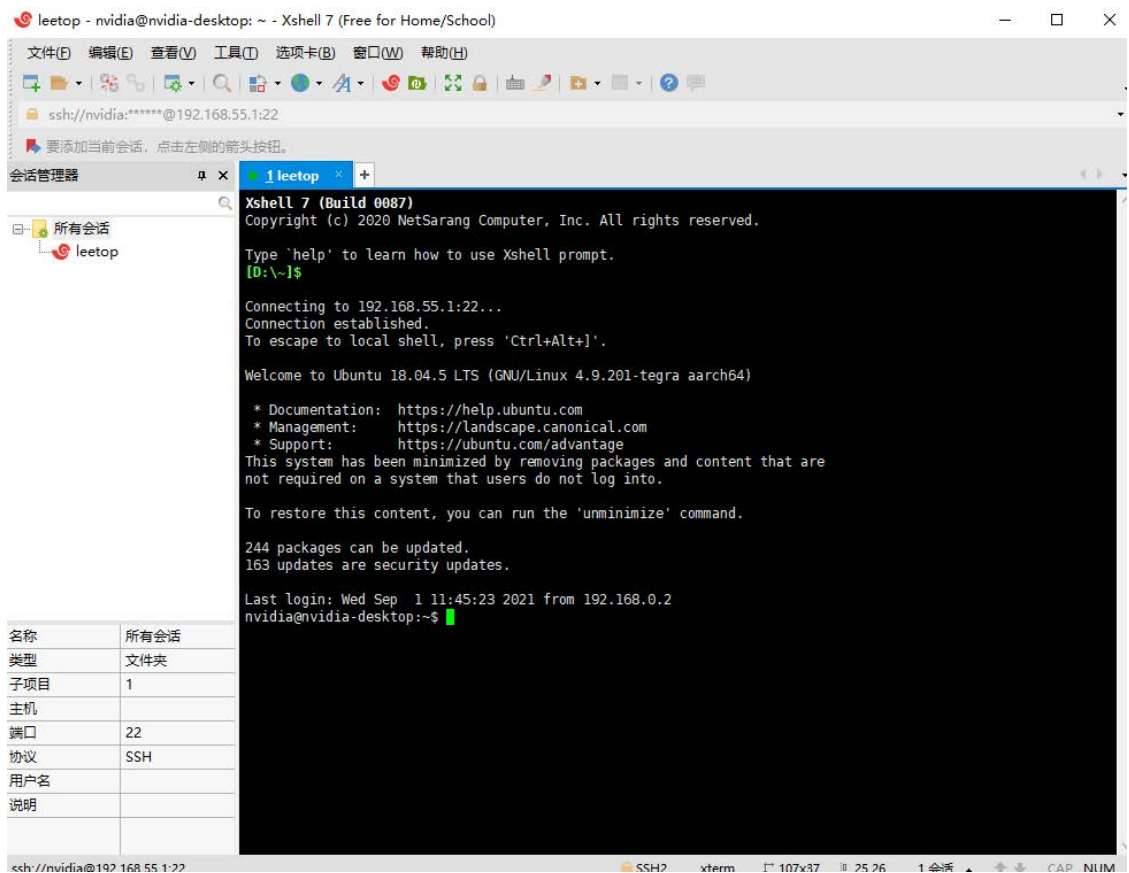
1 | 192.168.55.1



- Enter user and password



- Click Connect to enter the command line interface



- Operate jetson devices remotely through xshell

leetop - nvidia@nvidia-desktop: ~ - Xshell 7 (Free for Home/School)

文件(F) 编辑(E) 查看(V) 工具(T) 选项卡(B) 窗口(W) 帮助(H)

ssh://nvidia:\*\*\*\*\*@192.168.55.1:22

要添加当前会话，点击左侧的箭头按钮。

会话管理器

所有会话

leetop

Last login: Wed Sep 1 11:45:23 2021 from 192.168.0.2  
nvidia@nvidia-desktop:~\$ ll  
total 212  
drwxr-xr-x 23 nvidia nvidia 4096 9月 1 14:34 ./  
drwxr-xr-x 3 root root 4096 8月 24 09:34 ../  
-rw-r--r-- 1 nvidia nvidia 19998 9月 1 14:36 .bash\_history  
-rw-r--r-- 1 nvidia nvidia 220 8月 24 09:34 .bash\_logout  
-rw-r--r-- 1 nvidia nvidia 3881 8月 24 15:56 .bashrc  
drwx----- 14 nvidia nvidia 4096 8月 31 11:42 .cache/  
drwx----- 20 nvidia nvidia 4096 8月 31 11:44 .config/  
drwxrwxr-x 3 nvidia nvidia 4096 8月 25 10:50 cuda10.2\_trt7.1\_jp4.4/  
-rw-rw-r-- 1 nvidia nvidia 33831 8月 25 10:39 cuda10.2\_trt7.1\_jp4.4-20210209T001118Z-001.zip  
drwxrwxr-x 5 nvidia nvidia 4096 8月 31 11:54 deepstream\_pose\_estimation/  
drwxr-xr-x 2 nvidia nvidia 4096 8月 24 16:01 Desktop/  
drwxr-xr-x 2 nvidia nvidia 4096 8月 24 09:36 Documents/  
drwxr-xr-x 2 nvidia nvidia 4096 8月 24 13:57 Downloads/  
-rw-r--r-- 1 nvidia nvidia 8980 8月 24 09:34 examples.desktop  
drwx----- 2 nvidia nvidia 4096 8月 24 16:01 .gconf/  
drwx----- 3 nvidia nvidia 4096 8月 24 15:52 .gnupg/  
-rw-r--r-- 1 nvidia nvidia 5254 9月 1 14:35 .ICEauthority  
drwxrwxr-x 6 nvidia nvidia 4096 8月 31 14:36 jetson\_benchmarks/  
drwx----- 3 nvidia nvidia 4096 8月 24 09:36 .local/  
drwxr-xr-x 2 nvidia nvidia 4096 8月 24 09:36 Music/  
drwx----- 4 nvidia nvidia 4096 8月 25 10:10 .nv/  
drwxr-xr-x 2 nvidia nvidia 4096 8月 24 09:36 Pictures/  
drwx----- 3 nvidia nvidia 4096 8月 24 10:02 .pki/  
-rw-r--r-- 1 nvidia nvidia 807 8月 24 09:34 .profile  
drwxr-xr-x 2 nvidia nvidia 4096 8月 24 09:36 Public/  
drwxrwxr-x 7 nvidia nvidia 4096 8月 25 10:25 redaction\_with\_deepstream/  
drwx----- 2 nvidia nvidia 4096 8月 25 10:21 .ssh/  
drwxrwxr-x 2 nvidia nvidia 4096 8月 31 11:50 streams/  
-rw-r--r-- 1 nvidia nvidia 0 8月 24 09:40 .sudo\_as\_admin\_successful  
drwxr-xr-x 2 nvidia nvidia 4096 8月 24 09:36 Templates/  
-rw-r--r-- 1 nvidia nvidia 1046 8月 24 16:24 tmp\_NV\_L4T\_MULTIMEDIA\_API\_TARGET\_POST\_INSTALL\_T186\_COMP.sh\*  
drwxr-xr-x 2 nvidia nvidia 4096 8月 26 10:13 Videos/  
-rw-r--r-- 1 nvidia nvidia 12214 8月 26 09:49 .viminfo  
-rw-rw-r-- 1 nvidia nvidia 950 8月 31 14:40 .wget-hsts

名称	所有会话
类型	文件夹
子项目	1
主机	
端口	22
协议	SSH
用户名	
说明	

ssh://nvidia@192.168.55.1:22

SSH2 xterm 107x37 37,26 1 会话 CAP NUM

# System configuration

**Default username: nvidia Password: nvidia**

- ***NVIDIA Linux For Tegra (L4T)***

The load board supports native NVIDIA Linux For Tegra (L4T) Builds. HDMI, Gigabit Ethernet, USB3.0, USB OTG, serial port, GPIO, I2C bus can be supported.

Detailed instructions and tools download links: <https://developer.nvidia.com/embedded/jetson-linux-r3541>

Note: The native system does not support PWM fan control. If the native system is used, IPCall-BSP must be deployed

- ***NVIDIA Jetpack for L4T***

Jetpack is a software package released by NVIDIA that contains all of the software tools needed for Orin NX/Orin NANO development using Leetop\_ALP\_608\_F . It includes both host and target tools, including OS images, middleware, sample applications, documentation, and more. The newly released JetPack runs on Ubuntu 20.04 Linux 64-bit hosts.

It can be downloaded from the following link:

<https://developer.nvidia.com/embedded/jetpack>

- ***Default configuration system***

Leetop\_ALP\_608\_F uses Ubuntu 20.04 system, default username: nvidia password: nvidia

- ***Development MATERIALS and forums***

L4T development data: <https://developer.nvidia.com/embedded/linux-tegra>

Developer forum: <https://forums.developer.nvidia.com/>

## View System Version

View the installed system package version

```
1 | cat /etc/nv_tegra_release
```

View information about the installed JetPack

```
1 | sudo apt show nvidia-jetpack
```

## Make a backup image

Making a backup image needs to be done in the environment of command line flashing, only the system.img file is backed up

1. Use a USB cable to connect the USB Type-A of the PC computer of the Ubuntu18.04 system to the Type C of the Leetop\_ALP\_608\_F;
2. Power on the Leetop\_ALP\_608\_F and enter Recovery mode;
3. Enter the Linux\_for\_tegra directory, and refer to README\_backup\_restore.txt in backup\_restore for backup.

Instructions for backing up the Jetson Orin Nano/Orin NX system:

```
1 cd Linux_for_Tegra
2 systemctl stop udisks2.service #Automount backup restore for new external
  storage devices must be temporarily disabled.
3 sudo tools/14t_flash_prerequisites.sh #For Debian-based Linux
4 sudo service nfs-kernel-server start
5 sudo ./tools/backup_restore/14t_backup_restore.sh -e nvme0n1 -b jetson-
  orin-nano-devkit #Backup image, after the backup is successful, an image
  file will be generated under Linux_for_Tegra/tools/backup_restore.
6 sudo ./tools/backup_restore/14t_backup_restore.sh -r jetson-orin-nano-devkit
  #Backup image restoration.
```

4. Use the backup image to flash:

```
1 sudo ./tools/backup_restore/14t_backup_restore.sh -r jetson-orin-nano-devkit
2 #Backup image restoration
```

If it can be flashed normally, it means that the created backup image is available.



# Installation of Jtop tools

Jtop is a system monitoring utility for Jetson that can be run on a terminal to view and control the status of NVIDIA Jetson in real time.

Installation steps:

1. Installing the pip3 tool

```
1 | sudo apt-get install python3-pip
```

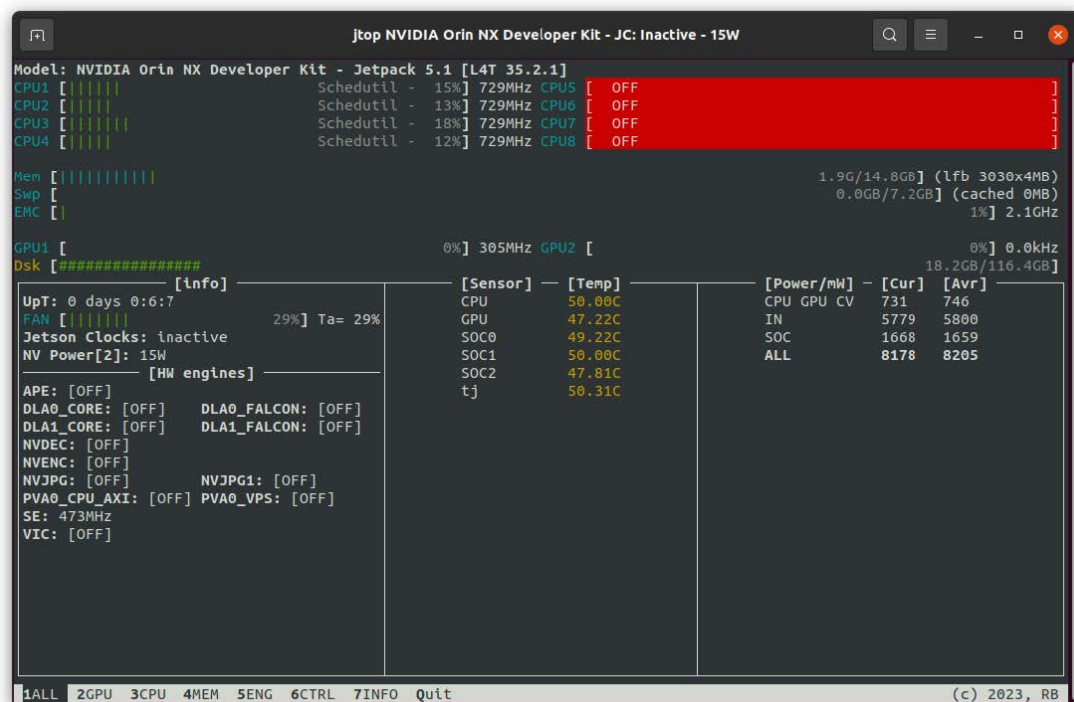
2. Installing jtop packages with pip3

```
1 | sudo -H pip3 install -U jetson-stats
```

3. Restart to run jtop

```
1 | jtop
```

After running, as shown in the figure below:



# Developer Tools

## [JetPack](#)

NVIDIA JetPack SDK is the most comprehensive solution for building AI applications. It bundles Jetson platform software including TensorRT, cuDNN, CUDA Toolkit, VisionWorks, GStreamer, and OpenCV, all built on top of L4T with LTS Linux kernel.

JetPack includes NVIDIA container runtime, enabling cloud-native technologies and workflows at the edge.

[JetPack SDK Cloud-Native on Jetson](#)

## [L4T](#)

NVIDIA L4T provides the Linux kernel, bootloader, NVIDIA drivers, flashing utilities, sample filesystem, and more for the Jetson platform.

You can customize L4T software to fit the needs of your project. By following the [platform adaptation and bring-up guide](#), you can optimize your use of the complete Jetson product feature set. Follow the links below for details about the latest software libraries, frameworks, and source packages.

## [DeepStream SDK on Jetson](#)

NVIDIA's DeepStream SDK delivers a complete streaming analytics toolkit for AI-based multi-sensor processing, video and image understanding. DeepStream is an integral part of [NVIDIA Metropolis](#), the platform for building end-to-end services and solutions that transform pixel and sensor data to actionable insights. Learn about the latest 5.1.2 developer preview features in our [developer news article](#).

## [Isaac SDK](#)

The NVIDIA Isaac SDK makes it easy for developers to create and deploy AI-powered robotics. The SDK includes the Isaac Engine (application framework), Isaac GEMs (packages with high-performance robotics algorithms), Isaac Apps (reference applications) and Isaac Sim for Navigation (a powerful simulation platform). These tools and APIs accelerate robot development by making it easier to add artificial intelligence (AI) for perception and navigation into robots.

## Key Features of Jetpack

OS	<p>NVIDIA <a href="#">Jetson Linux 35.4.1</a> provides the Linux Kernel 5.10, UEFI based bootloader, Ubuntu 20.04 based root file system, NVIDIA drivers, necessary firmwares, toolchain and more. <b>JetPack 5.1.2 includes Jetson Linux 35.4.1 which adds following highlights: (Please refer to <a href="#">release notes</a> for additional details)</b></p> <p>Adds support for Jetson AGX Orin Industrial module;</p> <p>Bootloader: Support for <a href="#">Grub as OS Loader in UEFI</a>; Support for <a href="#">PXE boot</a>;</p> <p>Camera: Enhanced error resiliency for improved stability in Argus;</p> <p>Support for multiple camera synchronization (sample argus_syncstereo added)</p> <p>Deskew calibration support for high data rate sensors (&gt; 1.5 Gbps)</p> <p>Support for alternating exposures in Argus (sample argus_userAlternatingAutoexposure added)</p> <p>Multimedia: Deprecated Nvbuf_utils is removed. Refer to migration guide to <a href="#">migrate from Nvbuf_utils to NvUtils</a>.</p> <p>Security: Support for up to <a href="#">3 signing keys to sign bootloader</a> in secure boot and ability to revoke the keys</p> <p>Ability to add and revoke UEFI signing keys</p> <p>Enhanced secure boot for <a href="#">encrypting kernel, kernel-dtb and initrd</a></p> <p>Support for delegated authentication with ability to <a href="#">sign UEFI with platform vendor owned keys</a></p> <p>Support in disk encryption for <a href="#">encrypting only User Data Partition (UDA)</a> and <a href="#">runtime enabling encryption of UDA partitions</a></p> <p>Over The Air Updates: Support for Jetson Orin NX and Jetson Orin Nano in <a href="#">Image based OTA</a> tools</p>
TensorRT	<p><a href="#">TensorRT</a> is a high performance deep learning inference runtime for image classification, segmentation, and object detection neural networks. TensorRT is built on CUDA, NVIDIA's parallel programming model, and enables you to optimize inference for all deep learning frameworks. It includes a deep learning inference optimizer and runtime that delivers low latency and high-throughput for deep learning inference applications. <b>JetPack 5.1.2 includes <a href="#">TensorRT 8.5.2</a></b></p>
DLA	<p><a href="#">NVIDIA DLA</a> hardware is a fixed-function accelerator engine targeted for deep learning operations. It's designed to do full hardware acceleration of convolutional neural networks, supporting various layers such as convolution, deconvolution, fully connected, activation, pooling, batch normalization, and others DLA software consists of the DLA compiler and the DLA runtime stack. The offline compiler translates the neural network graph into a DLA loadable binary and can be invoked using NVIDIA TensorRT™. The runtime stack consists of the DLA firmware, kernel mode driver, and user mode driver. <b>JetPack 5.1.2 includes DLA 3.12.1</b></p>
cuDNN	<p><a href="#">CUDA Deep Neural Network</a> library provides high-performance primitives for deep learning frameworks. It provides highly tuned implementations for standard routines such as forward and backward convolution, pooling, normalization, and activation layers. <b>JetPack 5.1.2 includes <a href="#">cuDNN 8.6.0</a></b></p>

CUDA	<p>CUDA Toolkit provides a comprehensive development environment for C and C++ developers building GPU-accelerated applications. The toolkit includes a compiler for NVIDIA GPUs, math libraries, and tools for debugging and optimizing the performance of your applications. <b>JetPack 5.1.2 includes <a href="#">CUDA 11.4.19</a></b> Starting with JetPack 5.0.2, upgrade to latest and greatest CUDA releases from CUDA 11.8 onwards without the need to update Jetson Linux other JetPack components. Refer to instructions in the <a href="#">CUDA documentation</a> on how to get the latest CUDA on JetPack.</p>
Multimedia API	<p>The <a href="#">Jetson Multimedia API</a> package provides low level APIs for flexible application development. Camera application API: libargus offers a low-level frame-synchronous API for camera applications, with per frame camera parameter control, multiple (including synchronized) camera support, and EGL stream outputs. RAW output CSI cameras needing ISP can be used with either libargus or GStreamer plugin. In either case, the V4L2 media-controller sensor driver API is used. Sensor driver API: V4L2 API enables video decode, encode, format conversion and scaling functionality. V4L2 for encode opens up many features like bit rate control, quality presets, low latency encode, temporal tradeoff, motion vector maps, and more. <b>JetPack 5.1.2 Camera highlights include:</b> Enhanced error resiliency for improved stability in Argus; Support for multiple camera synchronization (sample argus_syncstereo added). Deskew calibration support for high data rate sensors (&gt; 1.5 Gbps) .Support for alternating exposures in Argus (sample argus_userAlternatingAutoexposure added)</p>
Computer Vision	<p><a href="#">VPI (Vision Programming Interface)</a> is a software library that provides Computer Vision / Image Processing algorithms implemented on multiple hardware accelerators found on Jetson such as PVA (Programmable Vision Accelerator), GPU, NVDEC(NVIDIA Decoder), NVENC (NVIDIA Encoder), VIC (Video Image Compositor) and so on. OpenCV is an open source library for computer vision, image processing and machine learning. <b>JetPack 5.1.2 includes <a href="#">VPI 2.3</a> with following highlights:</b> New Brute Force Matcher algorithm supported on CPU and GPU backends ; New Transform Estimator algorithm supported on CPU backend. JetPack 5.1.2 includes OpenCV 4.5.4</p>

Graphics	<p>JetPack 5.1.2 includes the following graphics libraries: Vulkan® 1.3 (including the Roadmap 2022 Profile). <a href="#">Vulkan 1.3 Announcement</a> <a href="#">Vulkan® SC 1.0</a>: Vulkan SC is a low-level, deterministic, robust API that is based on Vulkan 1.2. This API enables state-of-the-art GPU-accelerated graphics and computation that can be deployed in safety-critical systems and that are certified to meet industry functional safety standards. Refer to <a href="https://www.khronos.org/vulkan-sc/">https://www.khronos.org/vulkan-sc/</a> for more information; Vulkan SC can also be invaluable for real-time non safety critical embedded applications. Vulkan SC increases determinism and reduces application size by shifting preparation of the run-time application environment either offline, or into application setup, as much as possible. This includes offline compilation of graphics pipelines that define how the GPU processes data, together with static memory allocation, that together enable detailed GPU control that can be rigorously specified and tested. Vulkan SC 1.0 is evolved from Vulkan 1.2 and includes: the removal of runtime functionality that is not needed in safety-critical markets, an updated design to provide predictable execution times and results, and clarifications to remove potential ambiguity in its operation. For more details see <a href="https://www.khronos.org/blog/vulkan-sc-overview">https://www.khronos.org/blog/vulkan-sc-overview</a> <b>Note:</b> Jetson support for Vulkan SC is <b>not</b> safety certified. OpenWF™ Display 1.0: OpenWF Display is a Khronos API for low overhead interaction with the native display driver on Jetson and allows interaction with Vulkan SC to display images. <b>Note:</b> Jetson support for OpenWF Display is <b>not</b> safety certified.</p>
Developer Tools	<p>CUDA Toolkit provides a comprehensive development environment for C and C++ developers building high-performance GPU-accelerated applications with CUDA libraries. The toolkit includes <a href="#">Nsight Visual Studio Code Edition</a>, <a href="#">Nsight Eclipse Plugins</a>, debugging and profiling tools including <a href="#">Nsight Compute</a>, and a toolchain for cross-compiling applications <a href="#">NVIDIA Nsight Systems</a> is a low overhead system-wide profiling tool, providing the insights developers need to analyze and optimize software performance. <a href="#">NVIDIA Nsight Graphics</a> is a standalone application for debugging and profiling graphics applications. <a href="#">NVIDIA Nsight Deep Learning Designer</a> is an integrated development environment that helps developers efficiently design and develop deep neural networks for in-app inference. Nsight System, Nsight Graphics, and Nsight Compute are all supported on Jetson Orin modules to assist development for autonomous machines. <b>JetPack 5.1.2 includes NVIDIA Nsight Systems v2022.5 ;JetPack 5.1.2 includes NVIDIA Nsight Graphics 2022.6 ;JetPack 5.1.2 includes NVIDIA Nsight Deep Learning Designer 2022.2</b></p>

Supported SDKs and Tools	<p><a href="#">NVIDIA DeepStream SDK</a> is a complete analytics toolkit for AI-based multi-sensor processing and video and audio understanding. <b>DeepStream 6.2 release supports JetPack 5.1.2</b> <a href="#">NVIDIA Triton™ Inference Server</a> simplifies deployment of AI models at scale. Triton Inference Server is open source and supports deployment of trained AI models from NVIDIA TensorRT, TensorFlow and ONNX Runtime on Jetson. On Jetson, Triton Inference Server is provided as a shared library for direct integration with C API. <a href="#">PowerEstimator</a> is a webapp that simplifies creation of custom power mode profiles and estimates Jetson module power consumption. <b>JetPack 5.1.2 adds supports for Jetson Orin NX and Jetson Orin Nano in PowerEstimator.</b> <a href="#">NVIDIA Isaac™ ROS</a> is a collection of hardware-accelerated packages that make it easier for ROS developers to build high-performance solutions on NVIDIA hardware including NVIDIA Jetson. <b>Isaac ROS DP 3.1 supports JetPack 5.1.2</b></p>
Cloud Native	<p>Jetson brings <a href="#">Cloud-Native</a> to the edge and enables technologies like containers and container orchestration. NVIDIA JetPack includes NVIDIA Container Runtime with Docker integration, enabling GPU accelerated containerized applications on Jetson platform. NVIDIA hosts several container images for Jetson on <a href="#">NVIDIA NGC</a>. Some are suitable for software development with samples and documentation and others are suitable for production software deployment, containing only runtime components. Find more information and a list of all container images at the <a href="#">Cloud-Native on Jetson page</a>.</p>
Security	<p>NVIDIA Jetson modules include various security features including Hardware Root of Trust, Secure Boot, Hardware Cryptographic Acceleration, Trusted Execution Environment, Disk and Memory Encryption, Physical Attack Protection and more. Learn about the security features by jumping to the security section of the Jetson Linux Developer guide. <b>JetPack 5.1.2 Security highlights include:</b> Support for up to <a href="#">3 signing keys to sign bootloader</a> in secure boot and ability to revoke the keys;Ability to add and revoke UEFI signing keys;Enhanced secure boot for <a href="#">encrypting kernel, kernel-dtb and initrd</a>;Support for <a href="#">signing kernel modules</a> ;Support for delegated authentication with ability to <a href="#">sign UEFI with platform vendor owned keys</a> ;Support in disk encryption for <a href="#">encrypting only User Data Partition (UDA)</a> and <a href="#">runtime enabling encryption of UDA partitions</a></p>

## Sample Applications

JetPack includes several samples which demonstrate the use of JetPack components. These are stored in the reference filesystem and can be compiled on the developer kit.

JetPack component	Sample locations on reference filesystem
TensorRT	/usr/src/tensorrt/samples/
cuDNN	/usr/src/cudnn_samples_/
CUDA	/usr/local/cuda-/samples/
Multimedia API	/usr/src/tegra_multimedia_api/
VisionWorks	/usr/share/visionworks/sources/samples/ /usr/share/visionworks-tracking/sources/samples/ /usr/share/visionworks-sfm/sources/samples/
OpenCV	/usr/share/OpenCV/samples/
VPI	/opt/nvidia/vpi/vpi-/samples

## Developer Tools

JetPack includes the following developer tools. Some are used directly on a Jetson system, and others run on a Linux host computer connected to a Jetson system.

- Tools for application development and debugging:
  - NSight Eclipse Edition for development of GPU accelerated applications: Runs on Linux host computer. Supports all Jetson products.
  - CUDA-GDB for application debugging: Runs on the Jetson system or the Linux host computer. Supports all Jetson products.
  - CUDA-MEMCHECK for debugging application memory errors: Runs on the Jetson system. Supports all Jetson products.
- Tools for application profiling and optimization:
  - NSight Systems for application multi-core CPU profiling: Runs on the Linux host computer. Helps you improve application performance by identifying slow parts of code. Supports all Jetson products.
  - NVIDIA® Nsight™ Compute kernel profiler: An interactive profiling tool for CUDA applications. It provides detailed performance metrics and API debugging via a user interface and command line tool.
  - NSight Graphics for graphics application debugging and profiling: A console-grade tool for debugging and optimizing OpenGL and OpenGL ES programs. Runs on the Linux host computer. Supports all Jetson products.



FCC Warning:

This equipment has been tested and found to comply with the limits for a Class B digital device, pursuant to part 15 of the FCC Rules. These limits are designed to provide reasonable protection against harmful interference in a residential installation. This equipment generates, uses and can radiate radio frequency energy and, if not installed and used in accordance with the instructions, may cause harmful interference to radio communications. However, there is no guarantee that interference will not occur in a particular installation. If this equipment does cause harmful interference to radio or television reception, which can be determined by turning the equipment off and on, the user is encouraged to try to correct the interference by one or more of the following measures:

- Reorient or relocate the receiving antenna.
- Increase the separation between the equipment and receiver.
- Connect the equipment into an outlet on a circuit different from that to which the receiver is connected.
- Consult the dealer or an experienced radio/TV technician for help.

Caution: Any changes or modifications to this device not explicitly approved by manufacturer could void your authority to operate this equipment.

This device complies with part 15 of the FCC Rules. Operation is subject to the following two conditions:

(1) This device may not cause harmful interference, and (2) this device must accept any interference received, including interference that may cause undesired operation.

This equipment complies with FCC radiation exposure limits set forth for an uncontrolled environment. This equipment should be installed and operated with minimum distance 20cm between the radiator and your body.