

I CONGRATULATIONS!

YOU ARE THE PROUD OWNER OF A DISPLATE LUMINO POSTER! A PREMIUM PRODUCT DESIGNED TO SPARK CONVERSATION AND GIVE THE ROOM A PLAYFUL VIBE. ALL THAT'S LEFT NOW IS TO TURN ON THE MAGIC!

I MOUNTING LUMINO ON 3D MAGNET

REQUIRED TOOLS (not included)



Power drill with
6 mm drill bit (~1/4")



Phillips-head
screwdriver or
screwdriver bit

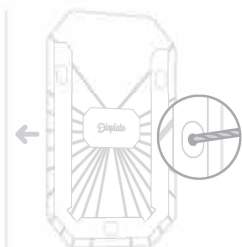


Hammer

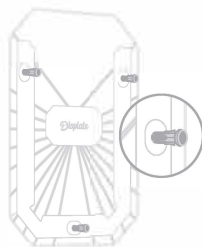


Note: The included expansion plugs are not intended for wood. If you want to mount Lumino on wooden or fibreboard walls, please skip steps 1 and 2, and use only the screws.

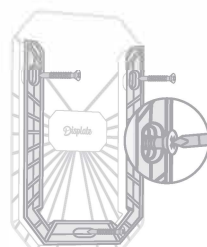
INSTALLATION



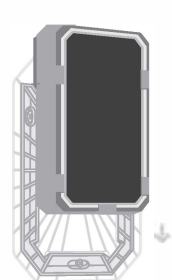
- ① **Stick** the template sticker to the wall and drill 3 holes in the indicated places.



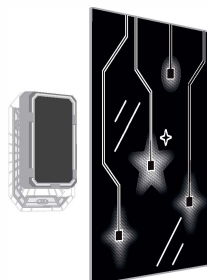
- ② **Insert 3 plastic expansion plugs** into the holes. Push them in by tapping lightly with a hammer.



- ③ Use the included screws to **fix the HD Mount** to the wall.



- ④ **Slide** the 3D Magnet inside the HD Mount.

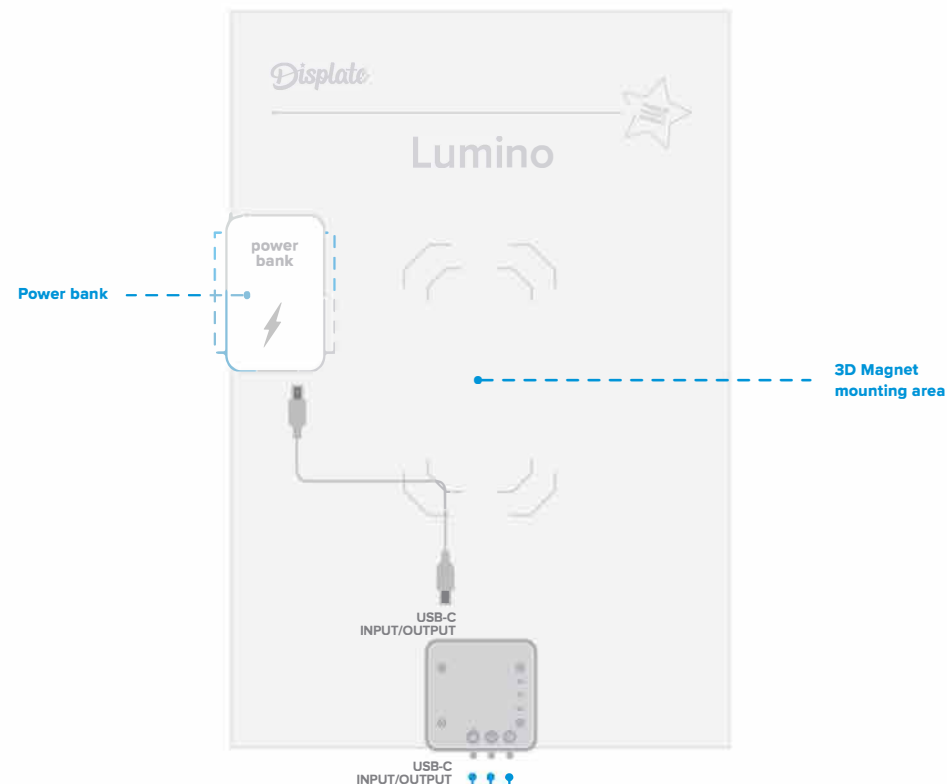


- ⑤ **Turn on the magic!**
Set up your Lumino and mount it on the 3D Magnet. Connect it to the power source, and enjoy!

I LUMINO QUICK START GUIDE

CONNECTING A POWER BANK

Stick the magnet to the power bank and mount it on the back of Lumino, outside the 3D Magnet mounting area. Use the **shorter USB-C cable** to connect the power bank to the Lumino module.



Lumino Timer

Click the timer button to switch between the Lumino working time modes. The Lumino Timer stays at the last selected time mode, even after a restart.

- ∞ Infinite mode - Lumino will work until it is turned off manually.
- 1h Lumino will turn off after one hour.
- 5h Lumino will turn off after five hours.

Lumino animation ON/OFF

If you are not mounting power bank behind Lumino, please use the longer **USB cable** to connect Lumino to any device or a wall charger with USB Power Delivery.


ON/OFF

WHAT'S IN THE BOX?

- Lumino
- 3D Magnet (Mount Set, expansion plugs and screws)
- Power Bank with USB-C cable and extra magnet
- Anti-stain gloves
- USB-C/USB-A cable
- User Manual
- Safety Manual

Manufacturer:
GWD Concept Sp z o.o.
Al. Jerozolimskie 123a
02-017 Warsaw
Poland

FCC Compliance Statement: This device complies with part 15 of the FCC Rules. Operation is subject to the following two conditions:
(1) This device may not cause harmful interference, and (2) this device must accept any interference received, including interference that may cause undesired operation.

 Lumino
MODEL: LE0001

  
MADE IN POLAND



Do not throw it in the trash, and please treat it with care.



Lumino only works indoors, since it's neither waterproof nor dustproof.

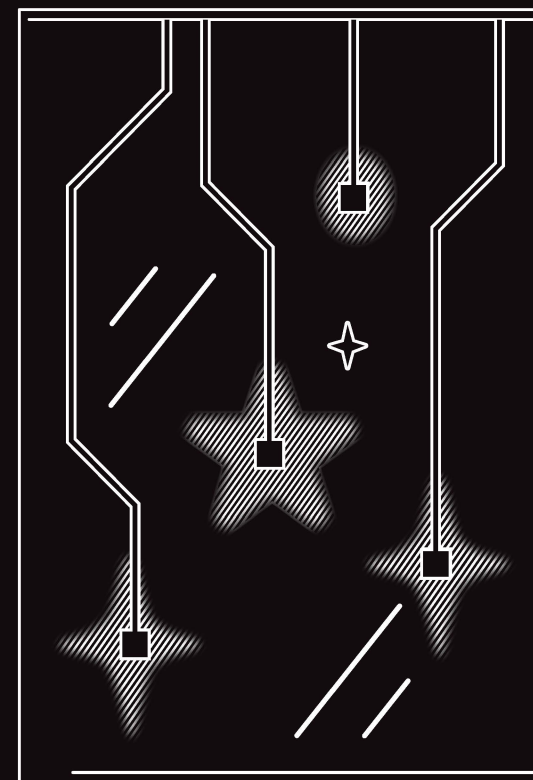


Not intended for children under 12 years of age.



We don't recommend using other mounting methods.

Displate
LUMÍNO



USER GUIDE

Turn on the magic