

Smart Touch Switch



Features:

1. High quality crystal tempered glass panel design, never fade.
2. With blue LED indicator, very distinguished.
3. Check and Control the Status of the Smart Switch by Mobile APP.
4. Backlight indicator ON/OFF can be by mobile APP.
5. You can set whether to keep the memory function after power off by mobile App : power-off/Power-on/memory of power-off
6. Applicable to incandescent lights, fluorescent lamps, led. lamps, water heater, ventilator and motor etc.
7. Support Amazon Alexa and Google Assistant etc.

- Page 1 -

Product parameters

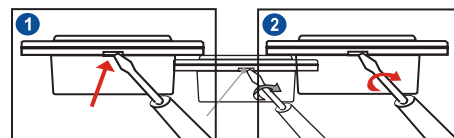
Working voltage: AC 100-240V 50-60Hz
Maximum power: 1000W/gang
Product power consumption: 0.5W
Working temperature: -10°C-60°C
Shell material: PC flame retardant material
Size: 120*72*33mm

Package

1. Smart switch*1
2. Screw*2
3. Manual*1

Installation

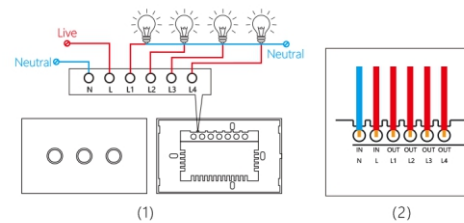
1. Remove the cover with a small screwdriver (1)
2. Turn the key to open the window (2)



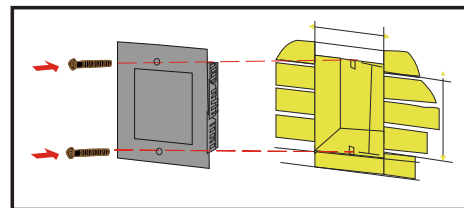
- Page 2 -

3. Wiring:

Connect wire to the correct terminal and tighten the screws.



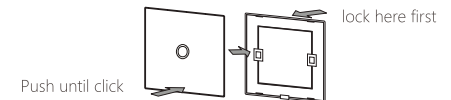
4. Fix the switch to the wall



- Page 3 -

5. Cover the panel and connect the power. (After the power is on, please wait for 3 seconds, then touch to turn on lamps.)

If you make touch testing without glass panel cover, please turn off general power after testing, then put on glass panel cover to switch, and turn on general power again.



Please scan QR code below to download APP



Smart Life App



If turn on the Bluetooth of mobile phone, it will be configured more quickly

How to configure switch with Smart Life APP ?

Mode 1: Power on the device and confirm indicator is blinking slowly. Then make configuration operations according to the APP's guidelines.

Mode 2: Hold any button of panel for 5s until the indicator is blinking slowly. Then make configuration operations according to the APP's guidelines.

How to remove the device from the APP ?

Solution 1: Remove device from APP interface directly

Solution 2: Hold any button of panel for 5s

Attention: Configure mode exit after 3min no operation

- Page 4 -

APP Connection Operation Method

1. Register an account in the app application.
2. On the device, press any key for 5 seconds.
3. The indicator light will flash quickly.
4. Follow the instructions below to connect the smart touch switch to the WiFi network.



5. Click the "+" button in the upper right position of the APP and select Electrical - switch (BLE+Wifi).
6. After entering pairing, prompt for WiFi network name and password, and follow the APP prompts to operate

- Page 5 -



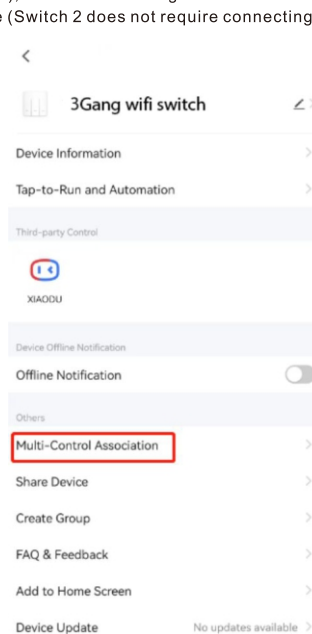
- Page 6 -

How to set up the 2way APP

1. APP operation 2way settings

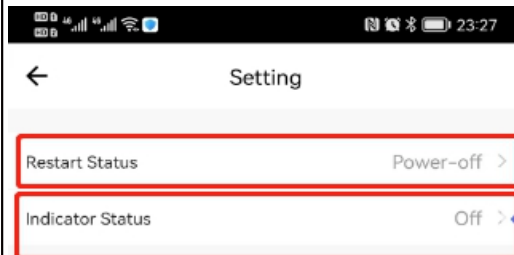
2. Switch installation method:

Switch 1: Normal wiring installation (requires connecting to the bulb), Switch 2: Installing N neutral wire and L live wire (Switch 2 does not require connecting to the bulb)



- Page 7 -

3. Set the power outage memory function and set the button backlight to turn on/off.



Warranty

Product requires professional installation by an electrician engineer. Non professional personnel should not install it to avoid damaging the switch product.

1. No warranty: unauthorized modification or modification of the electronic control circuit of the product, disassembly of the internal electronic motherboard, incorrect connection of wires, damage to the switch, shell scratches, surface damage, and glass damage.
2. Warranty period: 12 months

- Page 8 -

FCC Warning

15.19 Labeling requirements.

This device complies with part 15 of the FCC Rules. Operation is subject to the following two conditions: (1) This device may not cause harmful interference, and (2) this device must accept any interference received, including interference that may cause undesired operation.

15.21 Information to user.

Any Changes or modifications not expressly approved by the party responsible for compliance could void the user's authority to operate the equipment.

15.105 Information to the user.

Note: This equipment has been tested and found to comply with the limits for a Class B digital device, pursuant to part 15 of the FCC Rules. These limits are designed to provide reasonable protection against harmful interference in a residential installation. This equipment generates

uses and can radiate radio frequency energy and, if not installed and used in accordance with the instructions, may cause harmful interference to radio communications. However, there is no guarantee that interference will not occur in a particular installation. If this equipment does cause harmful interference to radio or television reception, which can be determined by turning the equipment off and on, the user is encouraged to try to correct the interference by one or more of the following measures:

- Reorient or relocate the receiving antenna.
- Increase the separation between the equipment and receiver.
- Connect the equipment into an outlet on a circuit different from that to which the receiver is connected.
- Consult the dealer or an experienced radio/TV technician for help.

FCC RF Radiation Exposure Statement:

1. This Transmitter must not be co-located or operating in conjunction with any other antenna or transmitter.

2. This equipment complies with RF radiation exposure limits set forth for an uncontrolled environment.

This equipment should be installed and operated with minimum distance **20cm** between the radiator and your body.