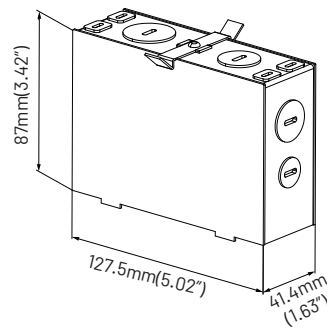
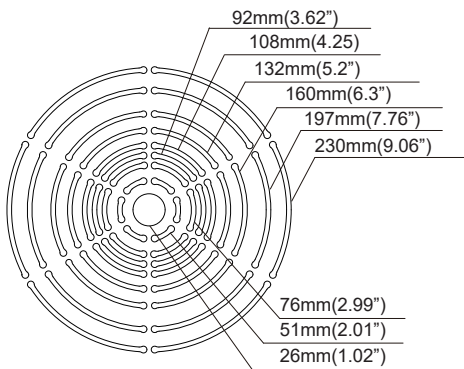
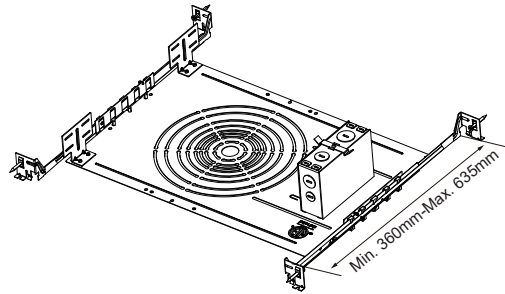


New Construction Plate Instruction

WARNING: Wear safety gloves and other appropriate safety equipment. Identification of Basic Smash Plate Options as blow:

DX-UNV-HOUSING



J-BOX

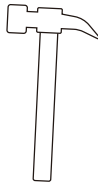
Tools Required (Not Included)



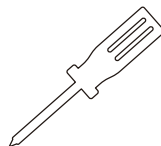
Gloves



Cutting Pliers

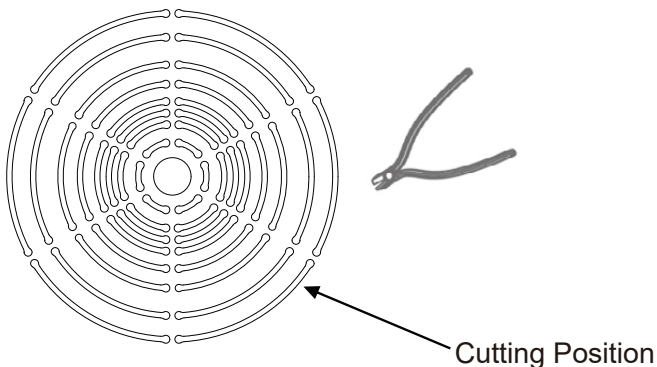


hammer



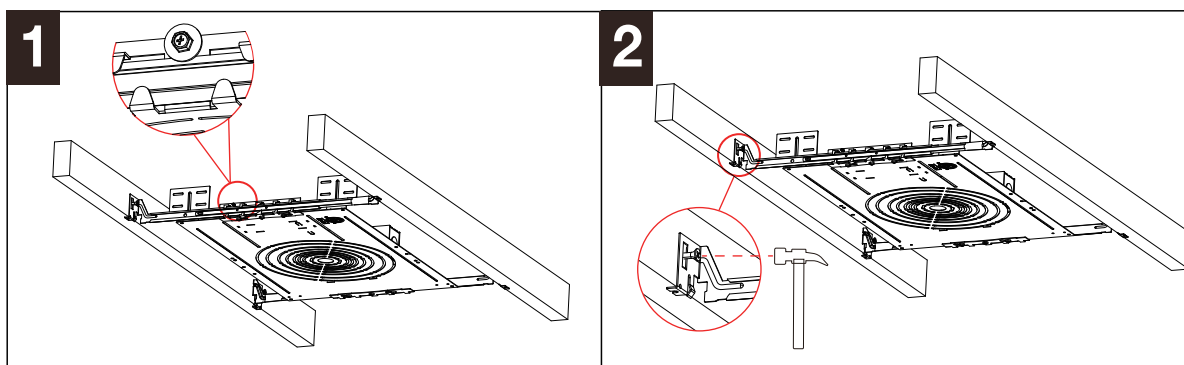
Screw Driver

Pre-Installation



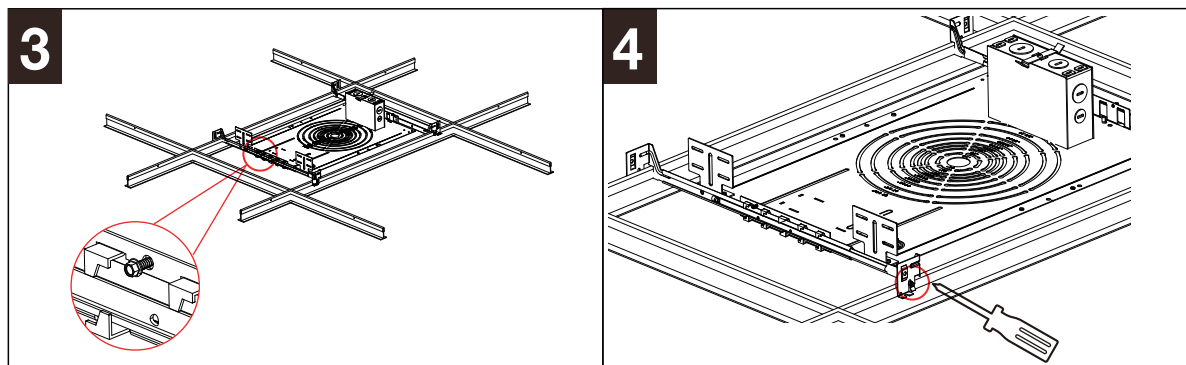
NEW CONSTRUCTION FRAME DRYWALL INSTALLATION (A)

1. Use bar hangers to attach fixture between ceiling joists. Extend the bar hangers to fit between the joists. Line up the joist locating tab with bottom of the wood joist. Each end of the bar hanger is equipped with a pre-installed nail.
2. Adjust and center the downlight opening hole as desired, by sliding the frame along the bar hangers. Lock and secure the frame with the bar hangers by tightening the edging screws. (Fig. 1)
3. For steel studs, use self-tapping sheet metal screws in place of nails. Using a hammer, secure the bar hangers to the wood joist with the nail. Secure at all four locations. (Fig. 2)



NEW CONSTRUCTION FRAME T-GRID INSTALLATION (B)

1. Extend the bar hangers and secure to the ceiling T-Grid using the vertical slots at the end of each bar hanger.
2. Adjust and center the downlight opening hole as desired, by sliding the frame along the bar hangers. Lock and secure the frame with the bar hangers by tightening the edging screws. (Fig. 3)
3. If required by code, connect the bar hangers to the T-grid with self-tapping sheet metal screws. (Fig. 4)



印刷要求

产品料号	L9601311
尺寸	648X297mm
材质	70g 双胶纸
印刷颜色	黑色
单/双面	正反印刷
来料方式	左右再上下对折
	正面： Page 1、 Page 2、 Page 3反面:Page 4、 Page 5、 空白

签核人员

拟制	唐莉莉
TPL	
包装主管	
安规工程师	
结构经理	
项目负责人	
产品经理	
销售经理	