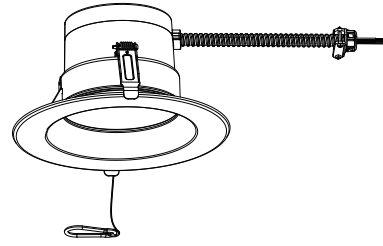


With built-in eco sensor



Without built-in eco sensor

## Set-up Options for Connecting Your Bluetooth Downlight

scan the QR code to download the SLG Sync App, follow instructions for direct to phone set-up, this Bluetooth device is compatible with SLG Lighting control system only.



### App Download:



### Commissioning:

SLG Sync mobile App is the easiest way to pair devices, create groups, set scenes, set schedules, dimming, color tuning, and adjust high trim based on needs.

### Notes:

- Please press icon  on the APP to save the setting after you change the "Sensor Settings" 
  - Please do not set the speed (S) less than 0.3 for the "Daylight Harvesting"
- |           |     |
|-----------|-----|
| Speed (S) | 0.3 |
|-----------|-----|
- Please do not turn on the sensor function if the downlight does not have this design.

## SAFETY PRECAUTIONS

**Please reset the Bluetooth function or unbind the fixture from the control terminal before you install the fixture.**

**READ CAREFULLY BEFORE INSTALLING FIXTURE. RETAIN THESE INSTRUCTIONS FOR FUTURE REFERENCE.**

This fixture must be wired in accordance with the National Electrical Code and all applicable local codes. Proper grounding is required for safety. THIS PRODUCT MUST BE INSTALLED IN ACCORDANCE WITH THE APPLICABLE INSTALLATION CODE BY A PERSON FAMILIAR WITH THE CONSTRUCTION AND OPERATION OF THE PRODUCT AND THE HAZARDS INVOLVED.

**TO PREVENT ELECTRICAL SHOCK, POWER SHOULD BE TURNED OFF AT THE FUSE BOX BEFORE INSTALLATION.**

### SAFETY WARNINGS:

Read all product labels and directions.

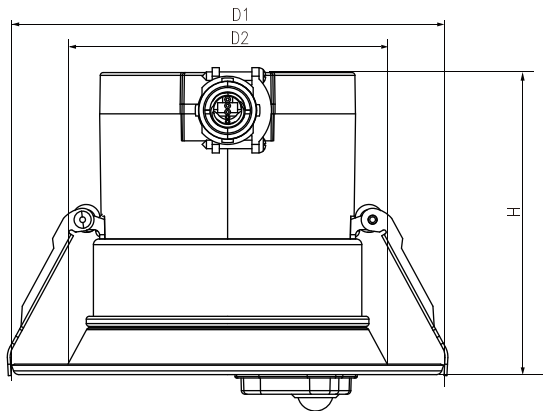
- **WARNING-Risk of fire or electric shock.** Install this kit only in the luminaires that have the construction features and dimensions shown in the photographs and/or drawings and where the input rating of the retrofit kit does not exceed the input rating of the luminaire.
- Installation should be performed only by a qualified electrician in accordance with the National Electrical Code and relevant local codes. Do not make or alter any open holes in an enclosure of wiring or electrical components during kit installation.
- **WARNING - To prevent wiring damage or abrasion, do not expose wiring to edges of sheet metal or other sharp objects.**
- **INSTALLATION SHOULD ONLY BE PERFORMED AFTER POWER TO THE FIXTURE HAS BEEN DISCONNECTED.**
- These instructions shall be included on an information sheet packaged with each unit.
- This device complies with Part 15 of the FCC Rules. Operation is subject to the following two conditions:  
(1) this device may not cause harmful interference, and (2) this device must accept any interference received, including interference that may cause undesired operation. The distance between user and products should be no less than 20cm.

Changes or modifications not expressly approved by the party responsible for compliance could void your authority to operate the equipment.

This equipment has been tested and found to comply with the limits for a Class A digital device, pursuant to part 15 of the FCC Rules. These limits are designed to provide reasonable protection against harmful interference in a residential installation. This equipment generates, uses and can radiate radio frequency energy and, if not installed and used in accordance with the instructions, may cause harmful interference to radio communications. However, there is no guarantee that interference will not occur in a particular installation. If this equipment does cause harmful interference to radio or television reception, which can be determined by turning the equipment off and on, the user is encouraged to try to correct the interference by one or more of the following measures:

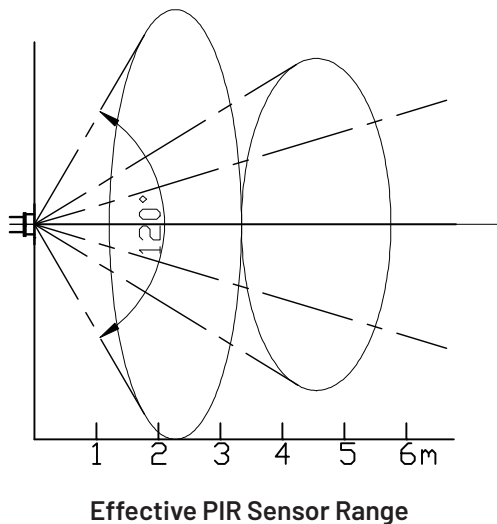
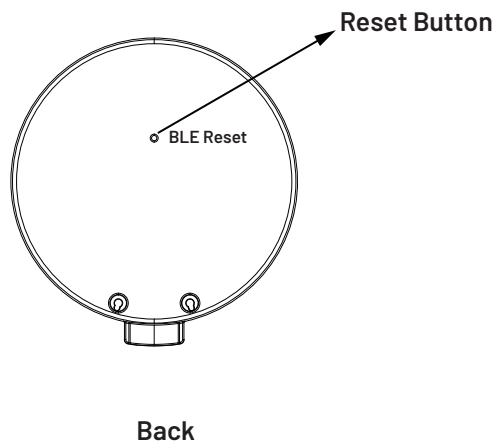
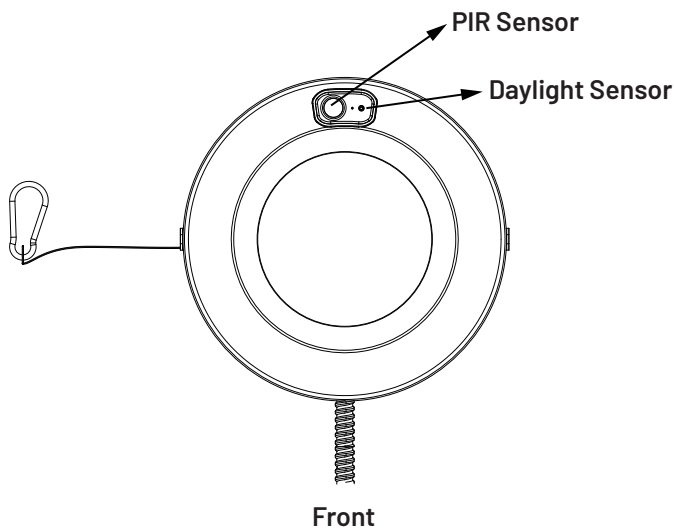
- Reorient or relocate the receiving antenna.
- Increase the separation between the equipment and receiver.
- Connect the equipment into an outlet on a circuit different from that to which the receiver is connected.
- Consult the dealer or an experienced radio/TV technician for help.

## DIMENSIONAL DRAWING



Model No.	Size	D1	D2	H	Cut-out
DRSB 4R LS11 G1 FSK	4"	6"	4-3/4"	4-3/16"	ø 4-15/16"
DRSB 6R LS22 G1 FSK	6"	8-7/16"	5-7/8"	4-13/16"	ø 6-1/8"
DRSB 8R LS33 G1 FSK	8"	10-1/16"	7-3/8"	5"	ø 7-9/16"
DRSB 10R LS40 G1 FSK	10"	11-3/8"	8-11/16"	5-1/2"	ø 9"
DRSB 4R LS11 G1 FSK MS	4"	6"	4-3/4"	4-3/16"	ø 4-15/16"
DRSB 6R LS22 G1 FSK MS	6"	8-7/16"	5-7/8"	4-13/16"	ø 6-1/8"
DRSB 8R LS33 G1 FSK MS	8"	10-1/16"	7-3/8"	5"	ø 7-9/16"
DRSB 10R LS40 G1 FSK MS	10"	11-3/8"	8-11/16"	5-1/2"	ø 9"

## ECO SENSOR



## Retrofit Installation

**Note:** The class 2 constant driver, for risk of electric shock, The junction box needs to connect the "Earth Wire".

**Step 1:** Make sure the POWER is TURNED OFF while you are installing the products.

**Step 2:** If existing fixture and trim are present, remove from ceiling or move it out of the way as it will not be needed during installation. Measure the ceiling opening to make sure the edge of the luminaire will cover the entire hole and still sit firmly in the ceiling before proceeding. (Fig. 2)

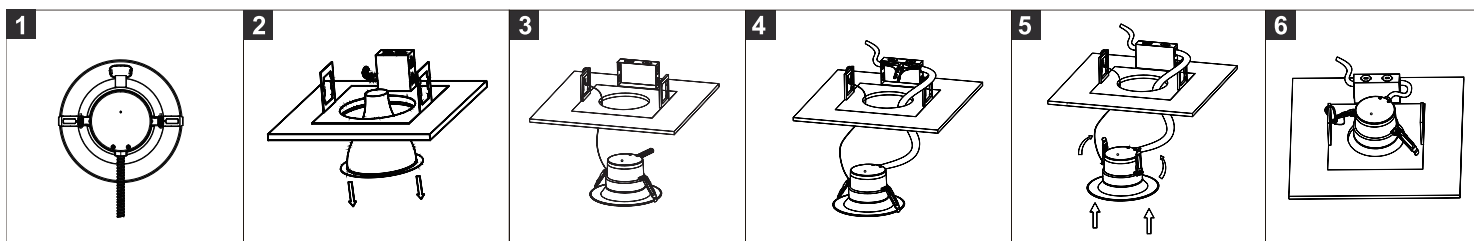
**Step 3:** Attach the carabiner safety clip to the existing fixture housing. (Fig.3)

**Step 4:** Insert fixture conduit into the J-box and wire to power source (black to hot, white to neutral, green to ground) (Fig.4). Reattach J-box cover when done.

**Step 5:** Squeeze the two housing clips so they are in an upright position and insert lamp into housing. (Fig.5)

**Step 6:** Once fixture is inside the housing, release the housing clips and continue pushing fixture into housing until securely fixed and flush with ceiling (Fig.6).

**Step 7:** Restore power at the source, installation is complete.



## New Construction Installation

**Note:** The class 2 constant driver, for risk of electric shock, The junction box needs to connect the "Earth Wire".

**Step 1:** Make sure the POWER is TURNED OFF in which you are installing the product;

**Step 2:** Attach the carabiner safety clip to the existing fixture housing. (Fig.7)

**Step 3:** Insert fixture conduit into the J-box and wire to power source (black to hot, white to neutral, green to ground) (Fig.8). Reattach J-box cover when done.

**Step 4:** Squeeze the two housing clips so they are in an upright position and insert fixture into opening (Fig.9)

**Step 5:** Once fixture is inside the opening, release the housing clips and continue pushing fixture into opening until securely fixed and flush with ceiling. (Fig.10)

**Step 7:** Restore power at the source and the installation is complete.

