

Digital Signage

User Manual

35"Shelf Edge LCD Display



Please read this manual
before use and keep it.

Contents

Contents	1
FCC compliance statement	2
FCC Radiation Exposure statement	2
Statement of use	3
Statement of liability	3
Warnings and precautions	4
Safety instruction	5
Caution	6
Packing list	7
Product introductions	8
Product drawings and interface diagrams	8
Installation instructions	9
Operating instruction	10
Product specification	11
FAQ	12

FCC compliance statement

This device complies with Part 15 of the FCC Rules. Operation is subject to the following two conditions: (1) this device may not cause harmful interference, and (2) this device must accept any interference received, including interference that may cause undesired operation.

changes or modifications not expressly approved by the party responsible for compliance could void the user's authority to operate the equipment.

This equipment has been tested and found to comply with the limits for a Class B digital device, pursuant to Part 15 of the FCC Rules. These limits are designed to provide reasonable protection against harmful interference in a residential installation. This equipment generates, uses and can radiate radio frequency energy and, if not installed and used in accordance with the instructions, may cause harmful interference to radio communications. However, there is no guarantee that interference will not occur in a particular installation.

If this equipment does cause harmful interference to radio or television reception, which can be determined by turning the equipment off and on, the user is encouraged to try to correct the interference by one or more of the following measures:

- Reorient or relocate the receiving antenna.
- Increase the separation between the equipment and receiver.
- Connect the equipment into an outlet on a circuit different from that to which the receiver is connected.
- Consult the dealer or an experienced radio/TV technician for help.

FCC Radiation Exposure statement

This equipment complies with FCC radiation exposure limits set forth for an uncontrolled environment. This equipment should be installed and operated with minimum distance 20cm between the radiator and your body. This transmitter must not be co-located or operating in conjunction with any other antenna or transmitter.

Statement of use

Thank you for choosing our digital signage products. For your safety and interests, please carefully read this user manual and all the information attached before using the product. The Company shall not be liable for any personal injury, property or other loss caused by your failure to operate and use the product in accordance with the User manual.

User manual of this product (hereinafter referred to as "Manual")

- The copyright of the manual belongs to the Company.
- The trademarks and names mentioned in the manual are inferior to their respective owners;
- If the contents of the manual are inconsistent with the actual products, the actual products shall prevail;
- The type approval code is indicated on the product nameplate.

If you do not know or have any objection to any content or terms of the manual, please raise your objection in writing to the Company within seven days after purchase, otherwise it is deemed that you have agreed, understood and accepted all the contents of the manual.

For any questions, please visit www.dnrlcd.com or call the service number 0755-27749030.

The Company reserves the right to interpret and modify the user manual.

Shenzhen DNR Technology Co., Ltd

Statement of liability

No warranty, position or other implication of any kind is given in this manual. The Company and its employees shall not be liable for any information loss or termination caused directly or indirectly by the product specifications and information mentioned in this manual. In addition, the product specifications and information mentioned in this manual are for reference only, including the hardware and software contents of the product, and are subject to change without prior notice.

Warnings and precautions

- Please insert the socket accurately to prevent the power plug from falling off. - If not connected, the screen may turn off or become a fire cause. - When disconnecting, be sure to hold the plug and disconnect it.

- Do not use damaged power cords, plugs or loose sockets. Electric shock and fire may occur. When removing the plug from the socket, do not hold wet hands or the power cord to remove it - electric shock may occur, please comply.

- Pulling the wires can lead to broken wires and leakage of electricity causing fires and disasters. Do not connect more than one plug to an outlet. - Overload fires and disasters are possible.

- If the power plug is bent excessively, it may break the line and leak electricity. - Disconnection may cause fire and disaster caused by leakage. Please be careful not to unplug the power cord when using the display.

- If the product is not used for a long time, disconnect the power cable. - Otherwise, it may be the cause of electric shock and leakage fire caused by heat, fire and insulation.

- When installing the display, be careful not to shock the monitor. - Shocks may cause the display to malfunction and be damaged.

- Do not install and use in wet and dusty places - fires and disasters caused by electrical leakage and electric shock may occur.

Safety instruction

- If you need to clean the display with a damp wiping cloth, remove the plug first. Wipe the screen with a dry cloth only after the power is turned off, but do not use alcohol, solvents or liquid containing ammonia.

- If you have followed the instructions in this manual, but the display still does not work properly, please consult the maintenance technician.

- Open rear cover only by qualified maintenance personnel.

- Keep the display out of direct sunlight and away from furnaces or other heat sources.

- Remove anything that could fall into a vent or prevent the display's electronics from dissipating heat.

- Do not touch the screen surface with hard or sharp objects.

- Keep the display dry.

- Please place the display in an environment with good ventilation and heat dissipation. The best working temperature is 5-45°C.




- To avoid electric shock and permanent damage to the product, do not place the product in an excessively humid environment or in the rain.

- When installing the display, make sure that electrical plugs and sockets are easy to use.

Caution

- Risk of explosion if the battery is replaced by an incorrect type
- disposal of a battery into fire or a hot oven, or mechanically crushing or cutting of a battery, that can result in an explosion;
- leaving a battery in an extremely high temperature surrounding environment that can result in an explosion or the leakage of flammable liquid or gas;
- a battery subjected to extremely low air pressure that may result in an explosion or the leakage of flammable liquid or gas.
- Do not ingest battery, Chemical Burn Hazard
- This product contains a button cell battery. If the button cell battery is swallowed, it can cause severe internal burns in just 2 hours and can lead to death.
- Keep new and used batteries away from children.
- If the battery compartment does not close securely, stop using the product and keep it away from children.
- If you think batteries might have been swallowed or placed inside any part of the body, seek immediate medical attention.

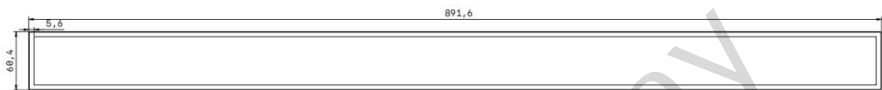
Packing list

No.	Name	Qty	Picture	Note
①	Display	1		891.6x60.4x16.1mm
②	Bracket	1		With screws
③	Adapter	1		Input: AC 100V-240V 50/60Hz Output: 12V/3A

Product introductions

Product drawings and interface diagrams

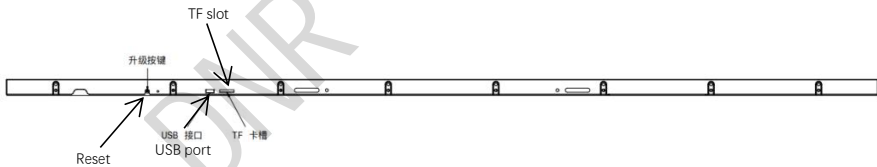
Unit: (mm)



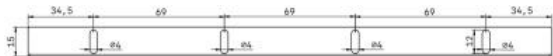
Front View



Rear View



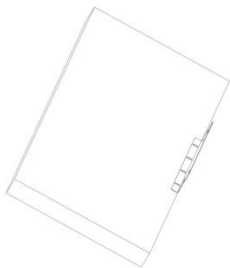
Side View



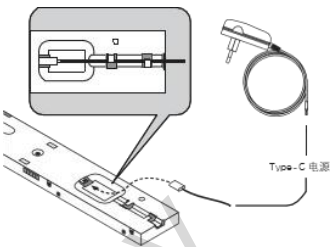
Bracket

Installation instructions

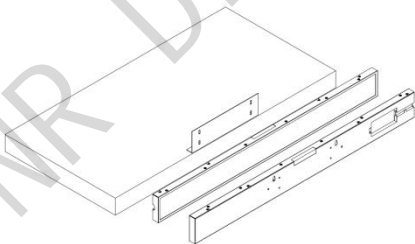
1 Install the bracket on the shelf with screws.



2 The adapter is connected to Type-C (Rear side)



3 Fix the display on the bracket by screws (see the following diagram, installation is completed). Please note that the TF card slot and USB interface face down.

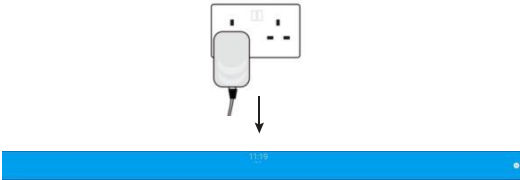


Remark: Instructions for disassembly
> Remove the screw and lift it.

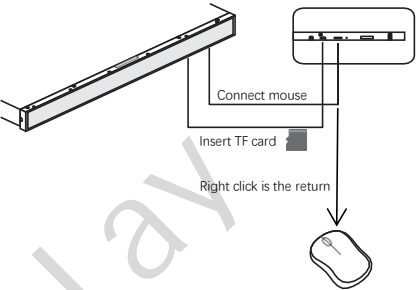


Operating instruction

1 Power on, standby screen in a few seconds:

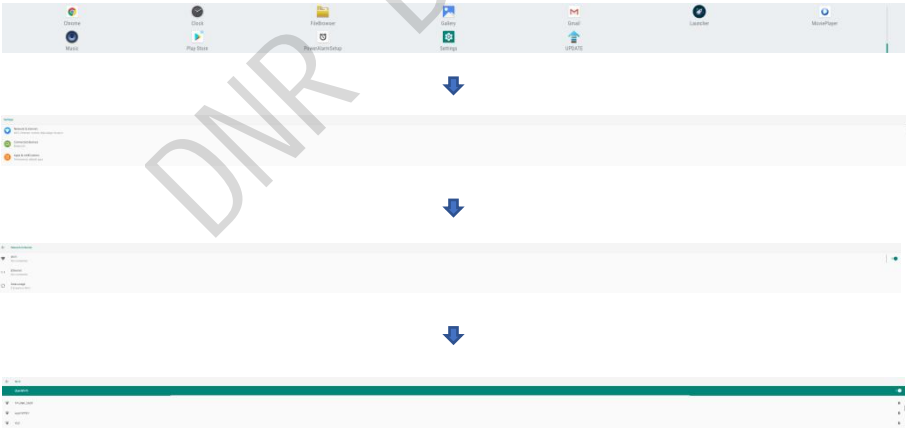


2 After connecting the mouse through USB, it can be operated. The right mouse button is the return key (Or TF card).



3  WIFI connection

Manual connection: Left mouse button click setting, enter the setting interface; Click on Network and Internet Settings, turn on the switch, select WIFI, and add a password. (The operation process is shown below)





Brightness setting

Click "Settings" to enter the setting interface as follows



APK installation and uninstall

Installation: Find the target APK through file management and click Install.

Uninstall: Hold down the APK and drag it to the uninstall icon in the leftmost part.

Product specification

Display	Size	35inch
	Display Area	878.4mm (H) * 48.19mm (V)
	Resolution	2880×158
	Brightness (Typ.)	400 cd/m²
	Contrast (Typ.)	3000:1
	View Angle (Typ.)	89/89/89/89
	Color	16.7M
Android	OS	Android 9.0
	CPU	T972 Quad-core ARM Cortex-A55
	RAM	2G DDR4
	ROM	8G
	Decoding format	MVC、MPEG-1/2/4、VC-1/WMV、AVS +、AVS2、RealVideo、MJPEG、H.264、H265-10、VP9-10、JPEG
	Interfaces	Micro_USB2.0*1 (OTG) , USB2.0*1 TF slot*1 DC12V in TYPE-C*1, DC12V in/out TYPE-C*1

	WLAN	Built-in
	Bluetooth	Built-in
	CMS	Support
	RTC clock	Supports the timer switch function

FAQ

Question 1: No image is displayed on the LCD.

Possible causes:

- LVDS cable disconnected.
- The display is powered off or has been turned off.
- No signal input to the display, in standby mode.

Solutions:

- Please check the LVDS cable connection, network cable connection is correct, plug is secure.
- Please check whether the display is powered on.
- Please check whether the display is in standby mode.

Question 2: The operation page cannot be accessed.

Possible causes:

- The network connection is incorrect.
- The device information is incorrectly configured.

Solutions:

- Check whether the network connection is correct.
- Reset the basic information.

Question 3: The image display is abnormal, flicker, shadow.

Possible causes:

- The abnormal image display may be caused by the poor quality of the signal cable.
- The abnormal image display may be due to irregularities in the file encoding format.

Solutions:

- Replace the signal cable with a better quality one.
- Replace the file with the correct encoding format.

If you still cannot eliminate the fault by referring to the above methods, or the fault situation you encounter is not one of the above problems, please contact the supplier/distributor.