

Cover, product description

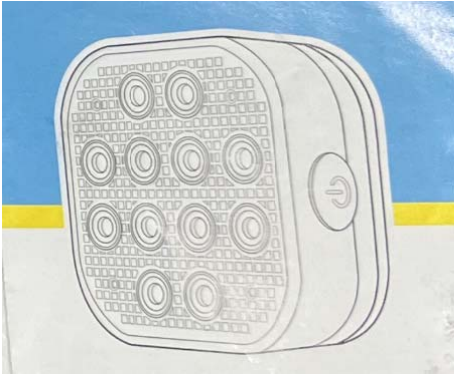
Rechargeable

Submersible

LED Light

with magnets and plastic plate [containing iron sheet]

Put the main picture of the product



Part 1: Product Introduction

Premium ABS shell

(Reliable and compression resistant)

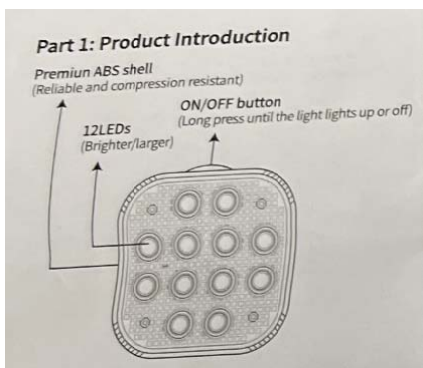
ON/OFF button

(Long press until the light lights up or off)

16LEDs

(Brighter/larger)

Product front view



Type-C charging port

Charging: indicator light on red

Fully charged (4H): indicator light is green

Contain magnet

(Attach to metal-bearing surface)

Notch

(Connection stuck point)

Contain iron sheet

(Connection magnet)

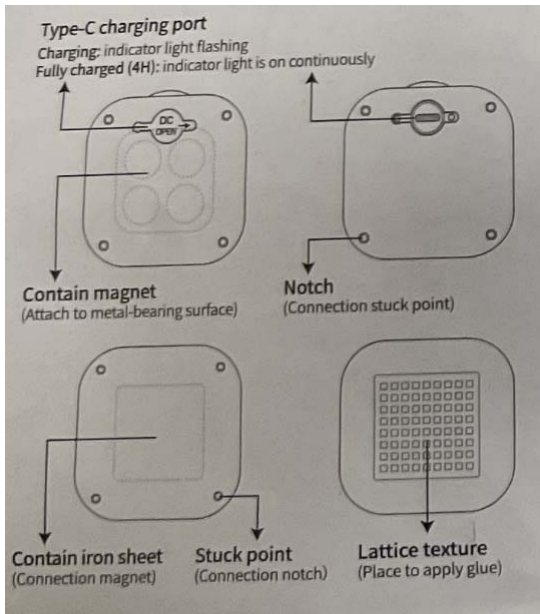
Stuck point

(Connection notch)

Lattice texture

(Place to apply glue)

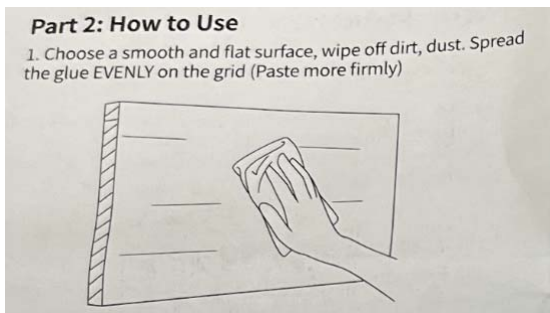
Product back view



Part 2: How to Use

1. Choose a smooth and flat surface, wipe off dirt, dust. Spread the glue EVENLY on the grid (Paste more firmly)

Tile drawing

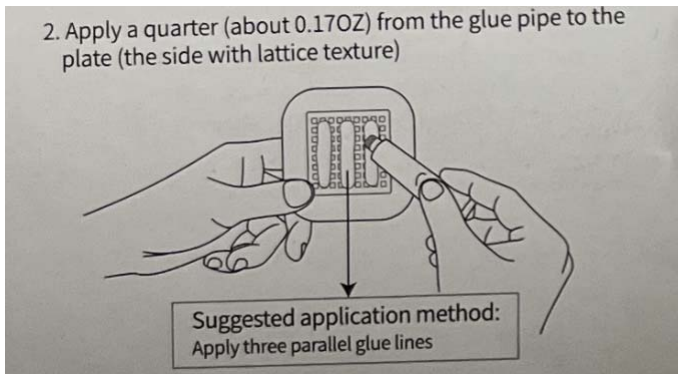


2. Apply a quarter (about 0.170Z) from the glue pipe to the plate (the side with lattice texture)

Suggested application method: Apply three parallel glue lines

Glue application diagram

2. Apply a quarter (about 0.17OZ) from the glue pipe to the plate (the side with lattice texture)

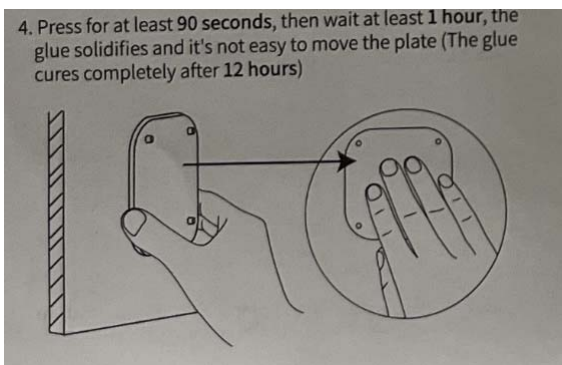


3. Glue the plate to the surface

4. Press for at least 90 seconds, then wait at least 1 hour, the glue solidifies and it's not easy to move the plate (The glue cures completely after 12 hours)

Press iron sheet diagram

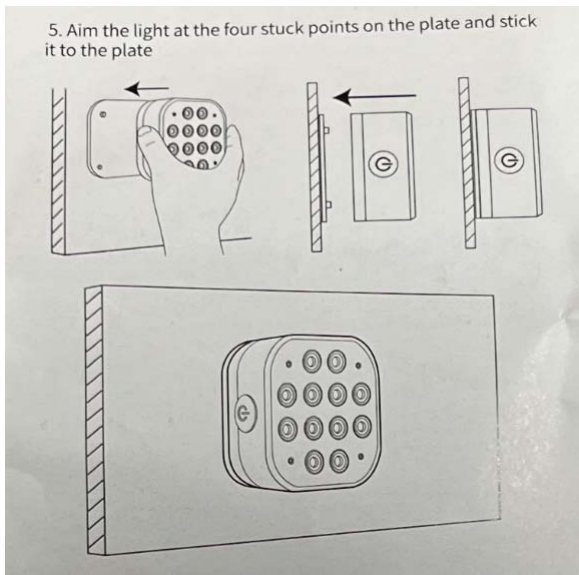
4. Press for at least 90 seconds, then wait at least 1 hour, the glue solidifies and it's not easy to move the plate (The glue cures completely after 12 hours)



5. Aim the light at the four stuck points on the plate and stick it to the plate

Lighting diagram

5. Aim the light at the four stuck points on the plate and stick it to the plate



Part 3: Component Supplement

1. Charging port

Note:

Please keep the charging port clean and dry.

Be sure that the waterproof silicone cover is close putting the pool light in the water.

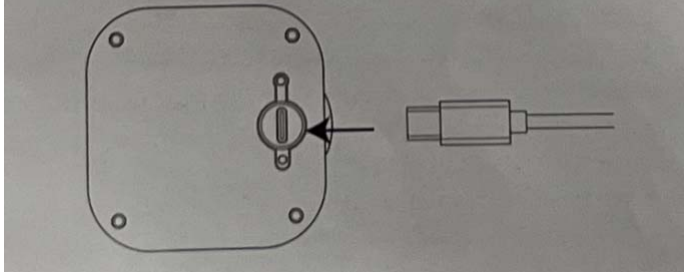
Charging diagram

1. Charging port

Note:

Please keep the charging port clean and dry.

Be sure that the waterproof silicone cover is closed before putting the pool light in the water.



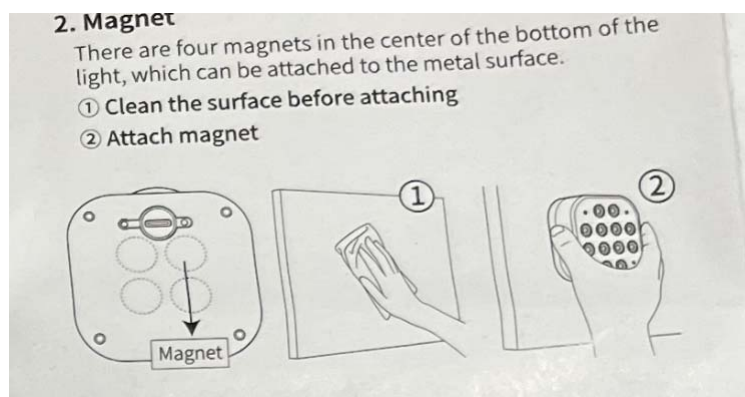
2. Magnet

There are four magnets in the center of the bottom of the light, which can be attached to the metal surface.

Clean the surface before attaching

Attach magnet

Magnetic attraction diagram

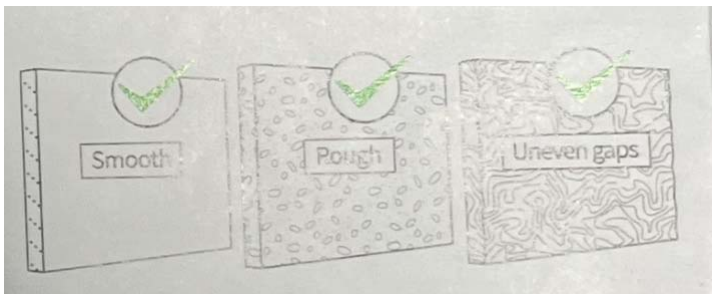


3. Plastic plate

Plastic plate (containing iron sheet) can be used for walls or floors with smooth/rough/uneven gaps, etc.

Smooth Rough Uneven gaps

Schematic diagram of plastic plate



4. Glue

Tips:

- Store in a cool and dry place away from light.
- After opening, please use it as soon as possible,

- Not edible. Please stay away from food and children.

" At water temperatures of 78-83 ° F, glue cuissier at least 1 hour.

. When stored unopened below 77 ° F, the shelf life of the product is 2 years.

The plate coated with glue is exposed to the air:

If the glue has not yet solidified, it can be used with new glue;

if the glue has solidified, it cannot be used and needs to be cleaned with a spatula. (Cured glue is easily removed with a spatula, even glue that has been cured for a long time is easy to clean)

• Preventive treatment:

Glue is environmentally friendly, insoluble in water, and has RoHS certification. When used under prescribed safety measures, it is usually harmless. However, some people with skin allergies may be affected, so we recommend that they wear impermeable rubber gloves or plastic gloves and protective glasses when using glue.

After use, wash the skin thoroughly with soap and warm water, avoiding solvents. Dry your skin with disposable paper towels instead of towel.

5. Remote control

Turn off Timer

Turn on & Check Timer

Brightness+ Brightness-

6 Dynamic modes

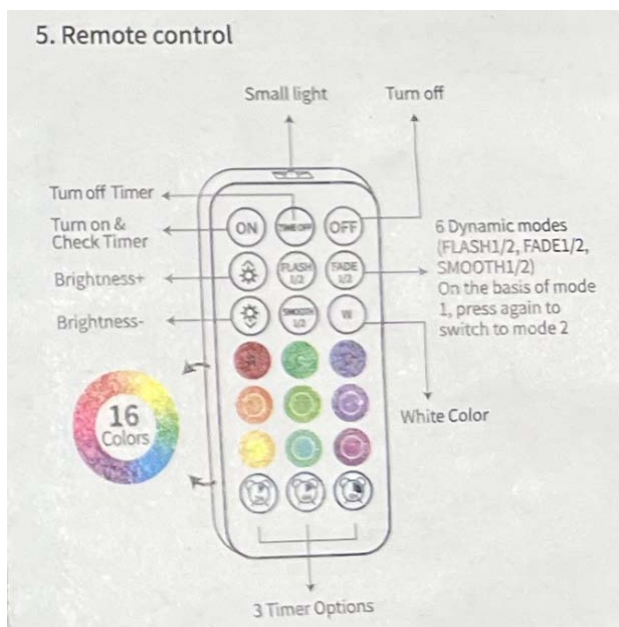
(FLASH1/2, FADE1/2, SMOOTH1/2)

On the basis of mode

1, press again to switch to mode 2

Small light

Remote control schematic

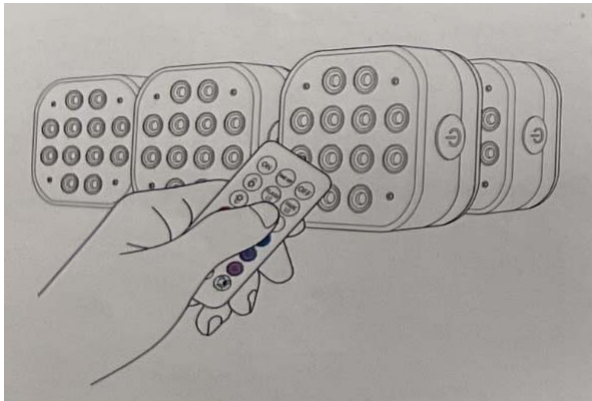


Function:

- * Steady colors: 16;
- Color changing: Yes;
- Frequency: 434.02MHz;

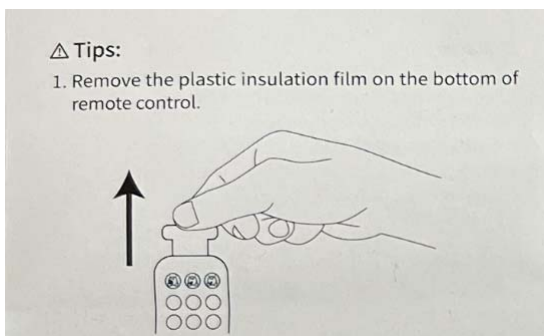
- Flash 1: Red, green, blue (3 kinds of colors of cycle);
- Flash 2: Red, yellow, green, cyan, blue, purple, white (7 kinds of colors of cycle);
- Fade 1: Red, green, blue (3 kinds of colors of cycle);
- Fade 2: Red, green, blue, cyan, yellow, purple, white (7 kinds of colors of cycle);
- Smooth 1: Yellow, green, cyan, blue, purple, white, red (16 kinds of colors of cycle);
- Smooth 2: Red, yellow, green, cyan, blue, surpie, white (7 kinds of colors of cycle);
- Timer: 2H, 4H, 6H;
- * Brightness adjustable: Yes, 5 levels;
- * Memory function: Yes.
- The max remote range is 200FT/61M(in air),10-16.4FT/3-5M (underwater), suggest remot 164FT/50M in air, 5FT/1.5M underwater.

Schematic diagram of four lamps controlled by one remote control



Tips:

1. Remove the plastic insulation film on the bottom of remote control.



2. When using remote control, make sure the rechargeable submersible light is on.
3. One remote can control all lights, no need to aim at the lights one by one. (Press longer or more when some lights don't response)
4. Check if the remote works
Remote works: Press any button on the remote, small light is on.
Remote NOT works: Press any button on the remote, small light is off. Please replace new battery.
5. Checking timer:
Press the button "ON", how many times the light flashes, it means how many hours let in timer.

Note:

This remote control is suitable for all controllable lights under the brand, and the upgraded rechargeable submersible lights can only be controlled by this remote control.

Part 4:

Tips

1. For Battery:

When the light stays in flashing red light, it means the light will be out of power soon, please charge it.

2 For Waterproof:

- Don't open the light by yourself, otherwise it will lead to leak
- Please don't use in hot water for too long, because the vapour may go into the light, it will damage the components and lead to stop working,
- * Please keep the remote control dry from water, because it's not waterproof.

Part 5: Specification

- Product Size $3.15 \times 3.15 \times 1.52$ inch
- LED 16 LEDs
- Magnetic Rustproof
- Waterproof Level IP68
- Light of fully charged 4H
- Glue Powerful
- Dimension of remote control $1.57 \times 3.39 \times 0.28$ inch
- Color 16 Colors (white, red, blue, green, yellow, purple and more)
- Dynamic modes 6 Kinds (FLASH 1/2, FADE 1/2, SMOOTH 1/2)
- Color Changing Yes
- Bright Adjustable Yes, 5 Levels
- Timer 2H, 4H, 6H
- Remote Control Radio Frequency
- " Battery polymer lithium 2500mAh (rechargeable)
- " Battery of Remote Control 1x CR2025 (included)
- Max Remote Range 100FT/30M (in air), 10-16.4FT/3-5M (underwater)
- * Suggest Remote Range 65FT/20M (in air), 5FT/1.5M (underwater)
- " Material ABS

Part 6: Wide Usage

Submersible led light works well in both wet and dry places, such as swimming pool, bathtub, pond, boat, fountain, aquarium, vase base, fish tank, flowerpot, garden, waterfall, and hallway, bar, garage, state, stage, showcase, ideal for party, birthday, events, holiday, festival decoration, like Wedding, Carnival Halloween, Christmas, Birthday party, etc.

Part 7: Warranty and Service

1. Warranty: 30 days free return and quickly unconditional refund, 2 years free replacement for product quality issue (NOT MAN MADE).

2. Service: Lifetime prompt customer service. Any questions, please don't hesitate to reach out, we will reply to you within 24 hours, and give you 100% satisfying solutions.

FCC Warning Statement

Changes or modifications not expressly approved by the party responsible for compliance could void the user's authority to operate the equipment. This equipment has been tested and found to comply with the limits for a Class B digital device, pursuant to Part 15 of the FCC Rules. These limits are designed to provide reasonable protection against harmful interference in a residential installation. This equipment generates uses and can radiate radio frequency energy and, if not installed and used in accordance with the instructions, may cause harmful interference to radio communications. However, there is no guarantee that interference will not occur in a particular installation. If this equipment does cause harmful interference to radio or television reception, which can be determined by turning the equipment off and on, the user is encouraged to try to correct the interference by one or more of the following measures:

- - Reorient or relocate the receiving antenna.
- - Increase the separation between the equipment and receiver.
- - Connect the equipment into an outlet on a circuit different from that to which the receiver is connected.
- - Consult the dealer or an experienced radio/TV technician for help.

This device complies with part 15 of the FCC Rules. Operation is subject to the following two conditions: (1) This device may not cause harmful interference, and (2) this device must accept any interference received, including interference that may cause undesired operation.

CERTIFICATION:

