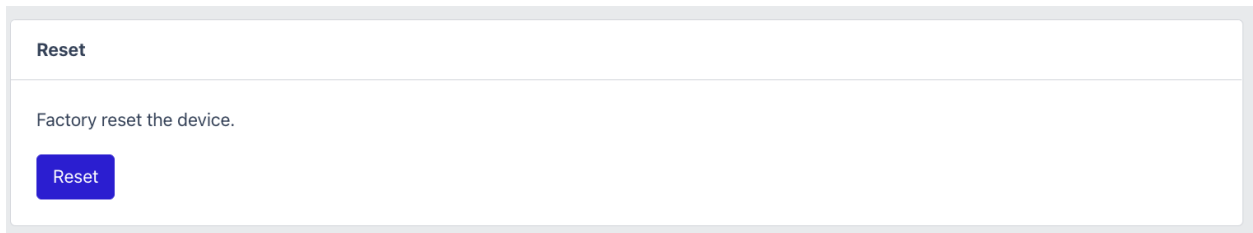
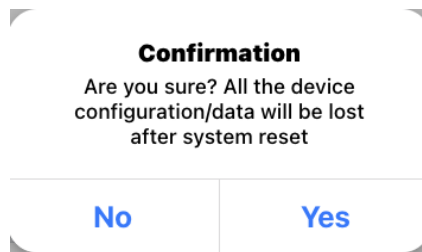


Reset the WaveTunnel device

To reset the WaveTunnel device, you can issue the request from the interfaces below. To be aware that all the configurations and user data will be lost after this reset operation.

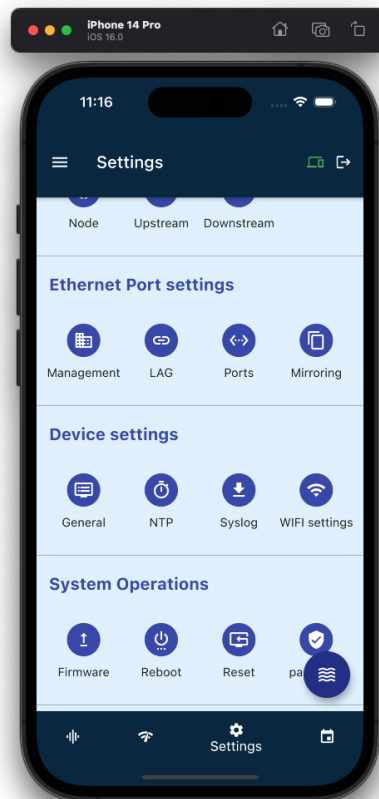
[WEB GUI]

Operations-> System Operations-> Reset

A screenshot of a web interface for resetting a device. It features a title bar labeled 'Reset'. Below the title bar, there is a text area containing the message 'Factory reset the device.' and a blue button labeled 'Reset'.A confirmation dialog box with a white background and rounded corners. It has a title 'Confirmation' in bold. Below the title, the text reads: 'Are you sure? All the device configuration/data will be lost after system reset'. At the bottom, there are two buttons: 'No' on the left and 'Yes' on the right, both in blue text.

[Mobile App]

Settings -> Reset



[CLI]

Operation -> reset

```
ssh admin@10.16.113.10
AVS(operation)#
Help:
  reboot - Reboot the device
  reset - Factory reset the device
  diag - Execute troubleshooting command
  log - Log files commands
  backup - Backup the device configurations
  restore - Restore the device configurations
  mirror - Port mirroring settings
  .. - Navigate up one category
  exit - Exit Command line interface

AVS(operation)# reset
Do you want to reset this device? (y/n):
```

Backup the configurations of the WaveTunnel device

On this page, you can back up the configurations of the WaveTunnel device for future use. For example, rollback to the earlier settings or restore it to another replacement device. You can also download the backup file to your local computer to avoid losing the configurations if the

device runs into the abnormal state. The max. Number of configurations that can be backup is up to 10.

[WEB GUI]

Operations-> System Operations-> Backup

Backup and Restore

Refresh

To backup all settings, including system and network configurations etc.click[backup] and select to open or save the backup file.

Backup

To "Download","Restore" or "Delete" the backup file, please click the button in the selected row.

Number	Name	Size	Datetime			
1	20220919_04_46_07.tar.gz	1.4K	2022-09-19 04:46:07	Download	Restore	Delete
2	20220919_04_46_09.tar.gz	1.4K	2022-09-19 04:46:09	Download	Restore	Delete

[CLI]

Operation -> backup

```
AVS(operation-backup)#  
  
Help:  
    list - List out the current backup files  
    execute - Execute the backup command  
    delete - Delete the backup file  
    .. - Navigate up one category  
    exit - Exit Command line interface  
  
AVS(operation-backup)# execute  
tar: removing leading '/' from member names  
  
Backup the device configurations successfully  
AVS(operation-backup)# list
```

Number	Name	Size	Datetime
1	20220831_22_01_39.tar.gz	1.0K	2022-08-31 22:01:40
2	20220914_18_04_11.tar.gz	1.0K	2022-09-14 18:04:11
3	20220922_23_27_52.tar.gz	1.0K	2022-09-22 23:27:52

```
AVS(operation-backup)# delete 1  
  
The backup file 20220831_22_01_39.tar.gz has been deleted  
AVS(operation-backup)#
```

Restore the configurations from the Backup file

[WEB GUI]

Operations-> System Operations-> Restore

Upload the backup file from your laptop.

To upload the backup file,click[Browse...] to select a previously saved backup file and click [Upload] to confirm.

Choose File No file chosen

Upload

Restore the configurations from the old backup file.

To "Download","Restore" or "Delete" the backup file, please click the button in the selected row.

Number	Name	Size	Datetime	
1	20220919_04_46_07.tar.gz	1.4K	2022-09-19 04:46:07	Download Restore Delete
2	20220919_04_46_09.tar.gz	1.4K	2022-09-19 04:46:09	Download Restore Delete

[CLI]

Operation-> restore

```
ssh admin@10.16.113.10
AVS(operation-restore)#

Help:
    list - List out the current backup files
    execute - Restore the device configuration from the backup file
    .. - Navigate up one category
    exit - Exit Command line interface

AVS(operation-restore)# list
```

Number	Name	Size	Datetime
1	20220914_18_04_11.tar.gz	1.0K	2022-09-14 18:04:11
2	20220922_23_27_52.tar.gz	1.0K	2022-09-22 23:27:52

```
AVS(operation-restore)# execute
Please specify the number of backup file you want to restore
AVS(operation-restore)# execute 1
```

Diagnostic and troubleshooting

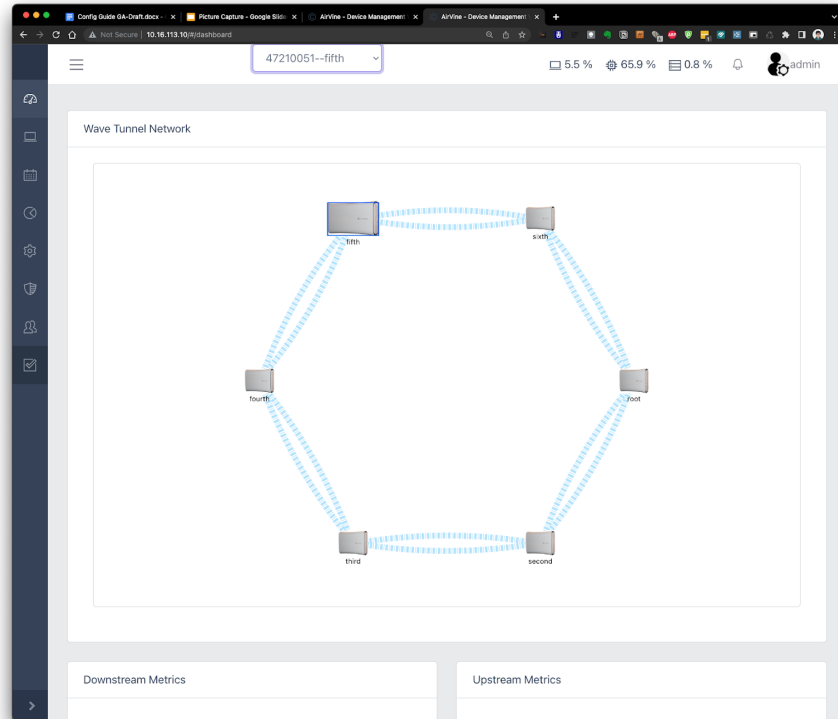
Checking the Status of the WaveTunnel connections

To check the status of the connections of WaveTunnel devices, there are several pages you can visit to get the information. See the explanations in the following sections.

[WEB GUI]

Tunnel Topology

Check the status of connections of your devices and how they are connected. Mouse hover to the device or the link to see more information.



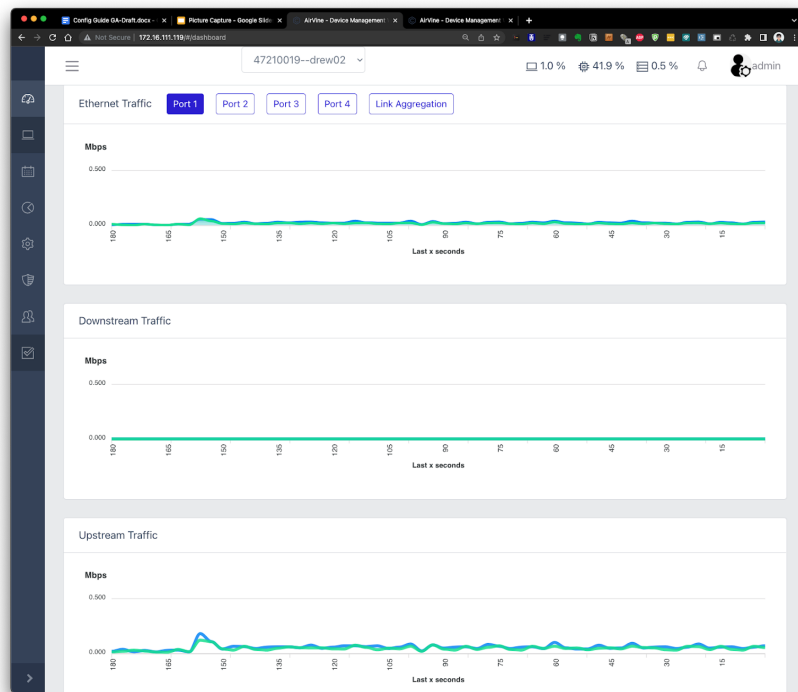
You can check the upstream/downstream tunnel metrics from the “Monitoring-> Wave Tunnel” page.

The screenshot displays the 'Wave Tunnel' monitoring page. It features two main sections: 'Upstream tunnel status' and 'Downstream tunnel status', each with a list of metrics. Below these, there is a 'Wave tunnel traffic' table showing data for 'Upstream Tunnel' and 'Downstream Tunnel'.

Upstream tunnel status		Downstream tunnel status	
Rx Power	-20.00 dBm	Rx Power	N/A
Rx Average Signal to Noise Ratio	27.25 dB	Rx Average Signal to Noise Ratio	N/A
Rx SNR over Gi64	21.50 dB	Rx SNR over Gi64	N/A
Rx Packet Error Rate (PER)	0.12 %	Rx Packet Error Rate (PER)	N/A
Tx MCS	12	Tx MCS	N/A
Rx MCS	12	Rx MCS	N/A
Tx Beam Index	33	Tx Beam Index	N/A
Rx Beam Index	34	Rx Beam Index	N/A
Modem Temperature	62 °C	Modem Temperature	62 °C
Radio Temperature	81 °C	Radio Temperature	67 °C

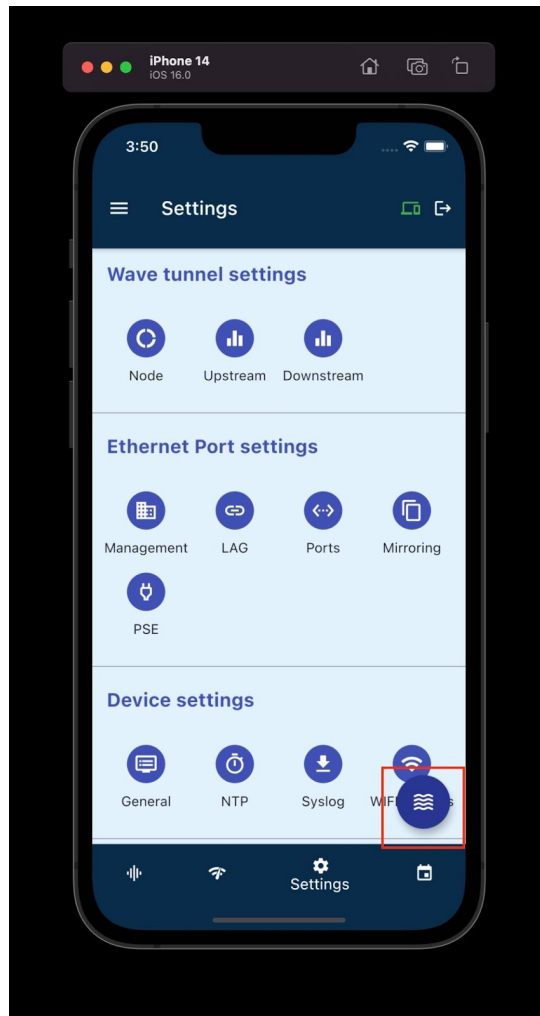
Wave tunnel traffic								
Port Name	Bytes Sent	Bytes Received	Packets Sent	Packets Received	Error In	Error Out	Drop In	Drop Out
Upstream Tunnel	503.6M	405.3M	4,991,695	4,009,107	0	0	0	0
Downstream Tunnel	0.0B	0.0B	0	0	0	0	0	268,614

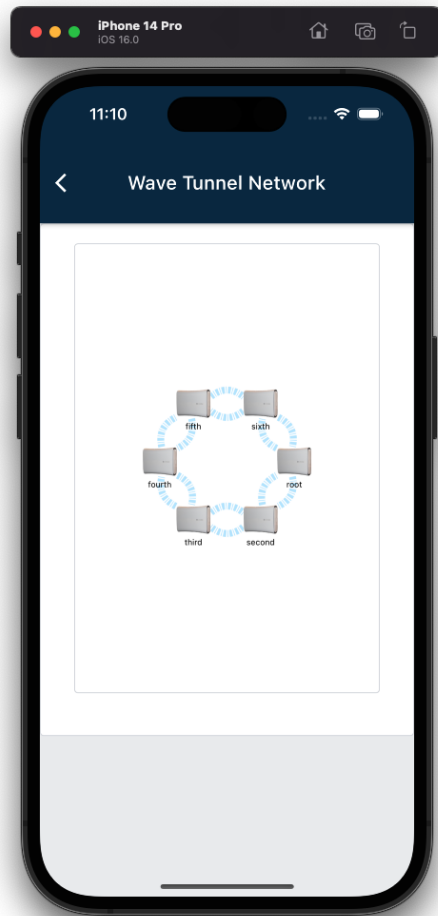
You can also check the Realtime traffic widgets on the Dashboard to see the traffic/bandwidth of your wave tunnel connections.



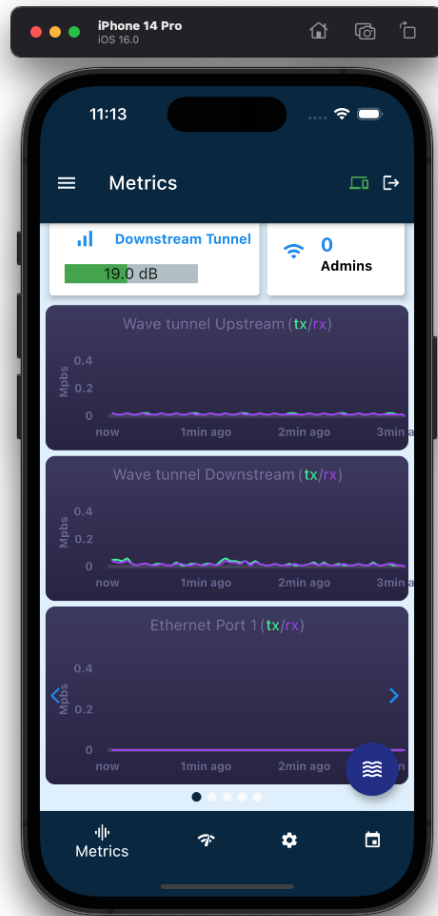
[Mobile App]

Click the button to check the WaveTunnel connection status.

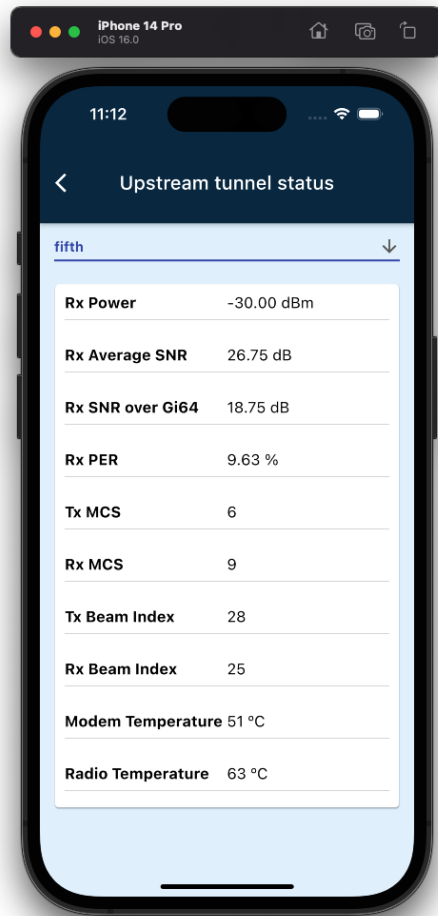




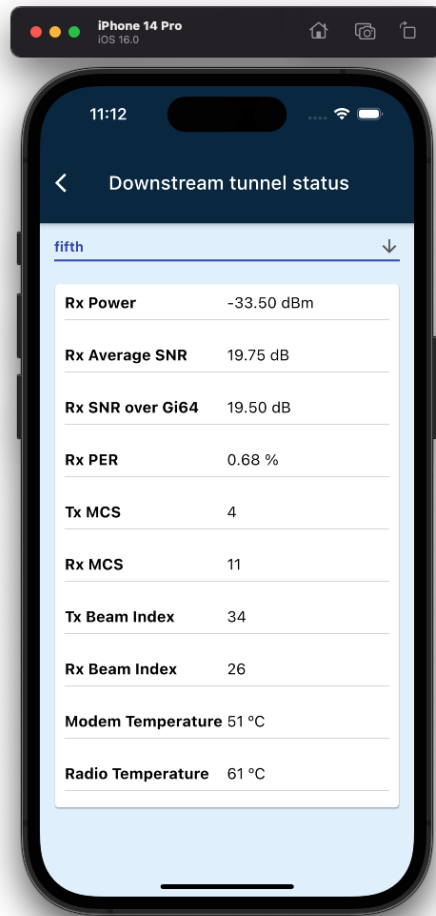
From Dashboard, you can check the real time traffic/bandwidth passing through the WaveTunnel connections.



Check the upstream connection metrics



Check the downstream connection metrics



[CLI]

show wavetunnel stats
show wavetunnel upstatus
show wavetunnel downstatus