



承 认 书

SPECIFICATION FOR APPROVAL

客 户 名 称

CUSTOMER NAME: 荣天视

产 品 名 称

PRODUCT NAME: 2.4/5.8G 3dBi 白色小黑人天线 L=350mm+端子

客 户 料 号

CUSTOMER P/N:

中联云达料号

ZLYD P/N: Z2CPAT245800011

	MANUFACTURER SIGNATURE	CUSTOMER SIGNATURE
Manufacture BY:	Victor	
Engineering BY:	 LILIU	
Character BY:	SONGYAOJIE	
DATE:	2024-02-21	

Contents

<i>Item</i>	<i>Description</i>
一、-----	变更履历
二、-----	规格表
三、-----	成品图
四、-----	测试报告



一、 变更履历

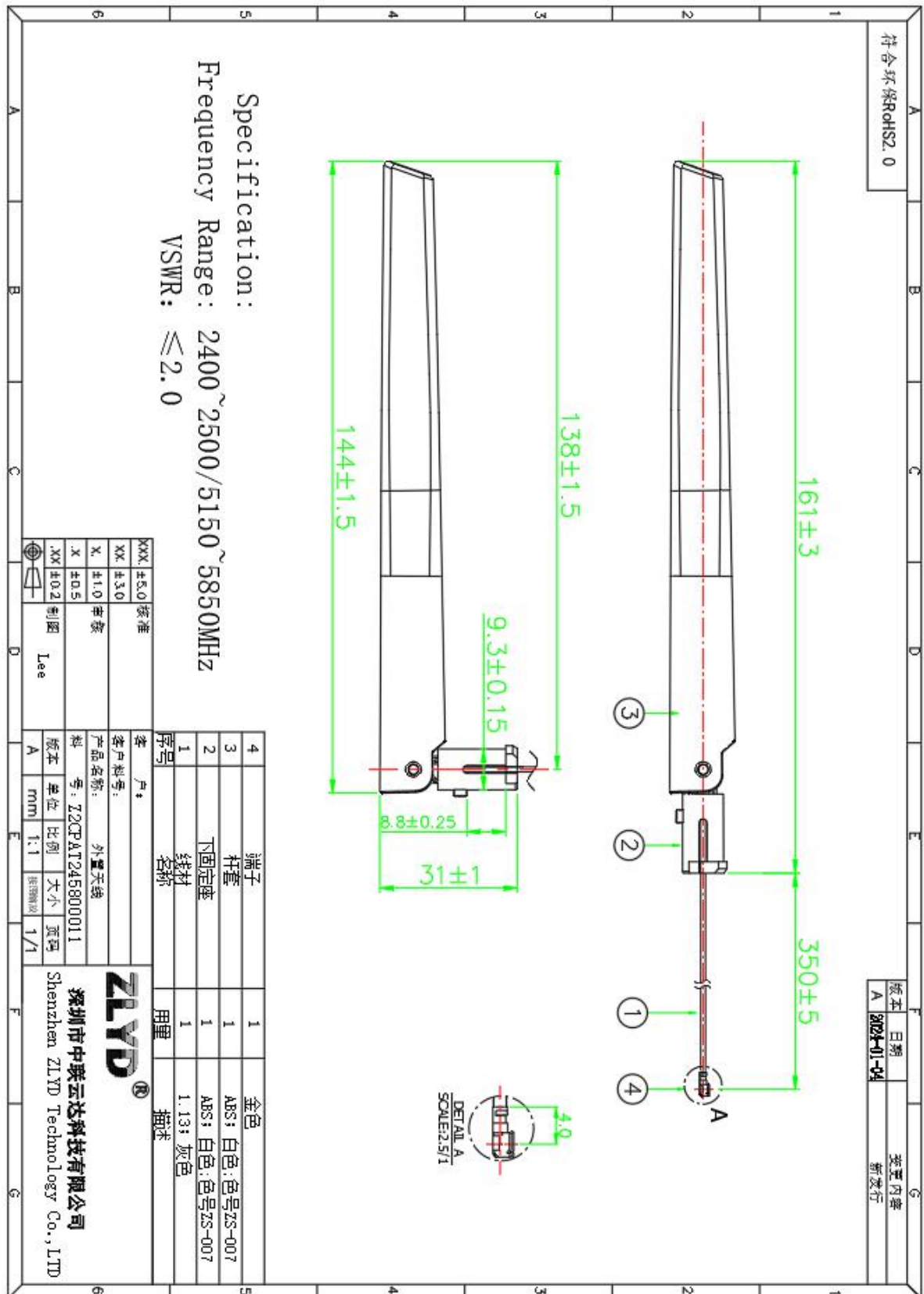
版本	日期	变更记录
V1.0	2024-01-04	初版发行

二、规格表:

产品主要技术参数

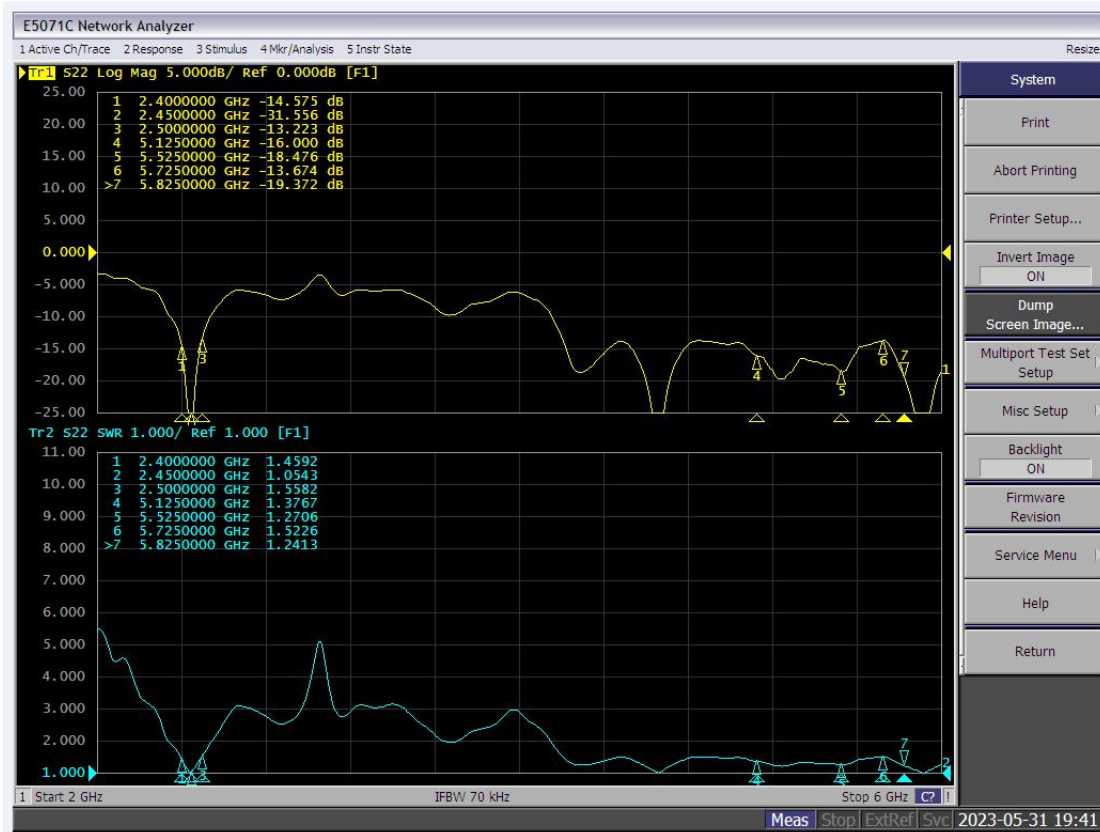
主要技术指标		Main technical specifications	
频率范围 (MHZ)	2400/5800	Frequency Range (MHZ)	2400/5800
特性阻抗(Ω)	50	Impedance(Ω)	50
峰值增益(dBi)	3.65	Peak Gain(dBi)	3.65
输出电压 驻波比	≤ 2.0	VSWR	≤ 2.0
极化方式	垂直极化	Polarization	Linear, Vertical
方向性	全向性	Radiation	Omni-directional
连接方式	IPEX	Connector Type	IPEX
物理性能		Physical Properties	
天线外套材料	TPE+ABS	Antenna cover	TPE+ABS
工作温度	-20℃~+70℃	Operating Temp	-20℃~+70℃
保存温度	-20℃~+60℃	Storage Temp	-20℃~+60℃

三、成品图:



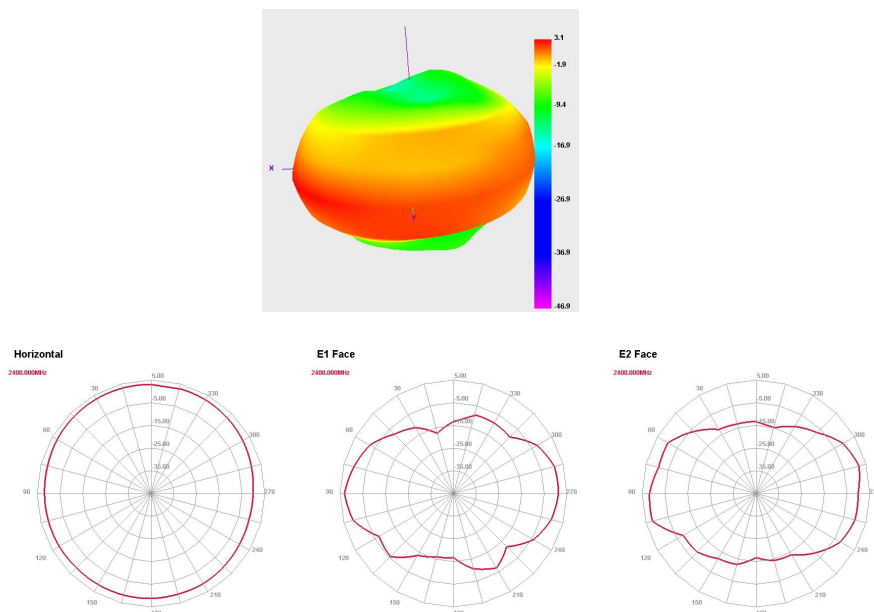
四、 测试报告：

4.1：网络分析仪测试报告

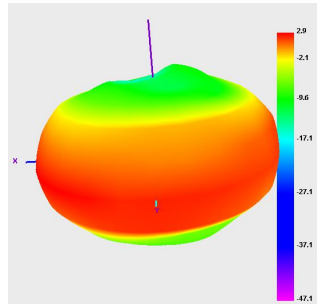


4.2：暗室 2D、3DRadiation Pattern

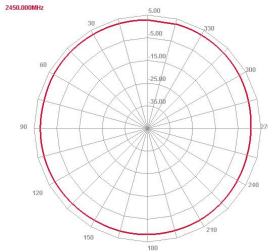
2400MHz



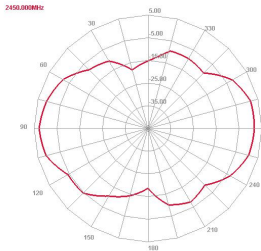
2450MHz



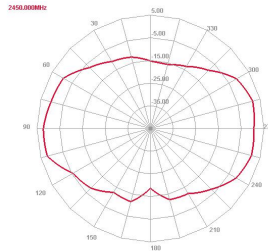
Horizontal



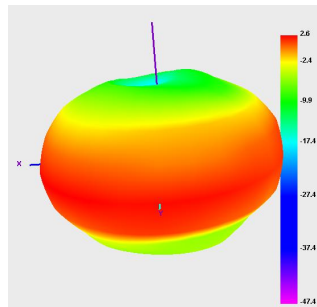
E1 Face



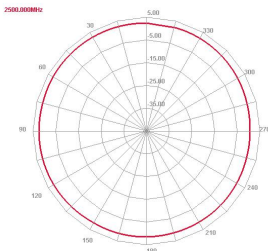
E2 Face



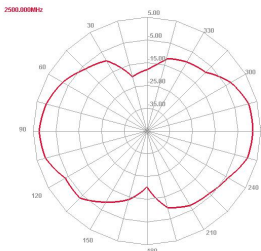
2500MHz



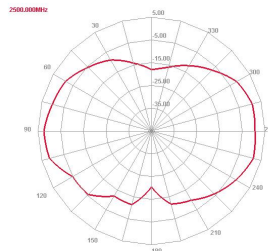
Horizontal



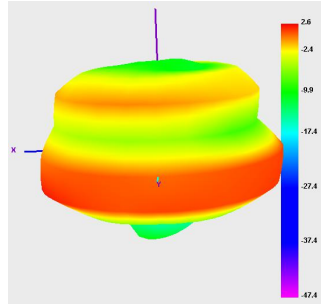
E1 Face



E2 Face

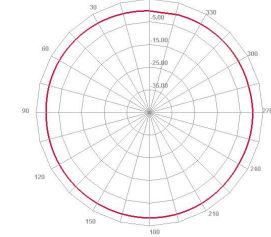


5150MHz



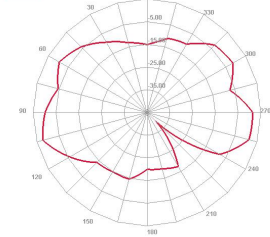
Horizontal

5150.000000MHz



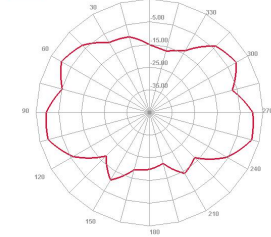
E1 Face

5150.000000MHz

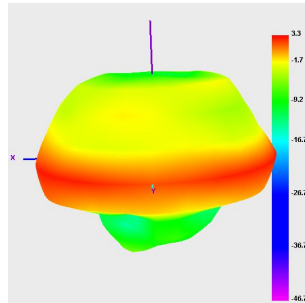


E2 Face

5150.000000MHz

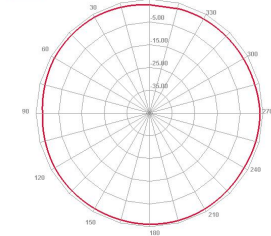


5350MHz



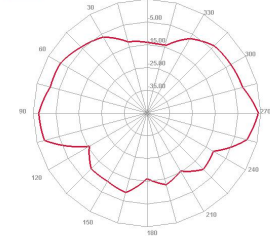
Horizontal

5350.000000MHz



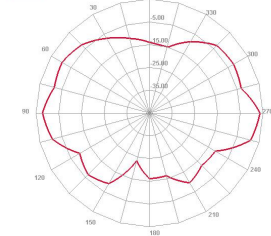
E1 Face

5350.000000MHz

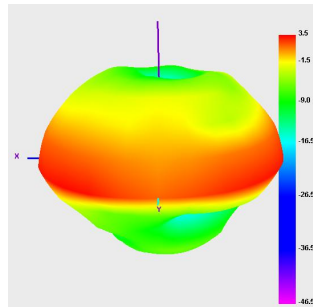


E2 Face

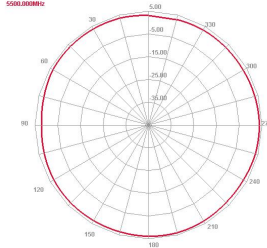
5350.000000MHz



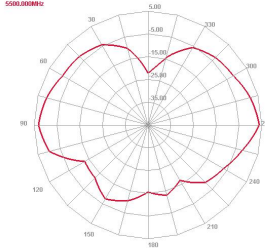
5500MHz



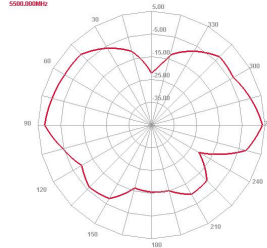
Horizontal



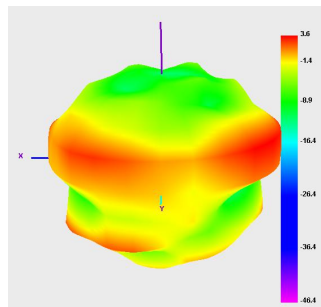
E1 Face



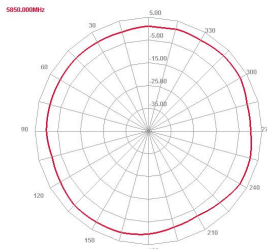
E2 Face



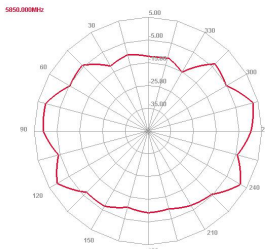
5850MHz



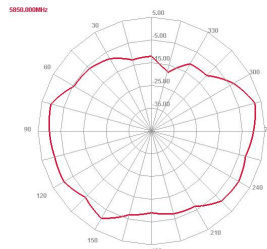
Horizontal



E1 Face



E2 Face





4.3: 天线增益与效率

ANT		
频率 (MHZ)	增益 (dBi)	效率 (%)
2400	3.32	74.51
2450	3.61	75.02
2500	3.50	75.19
5150	3.43	74.36
5350	3.39	76.01
5500	3.54	73.92
5850	3.65	74.18