

dokoo

QUICK START GUIDE

01. ! WARNING

Before using this product read all instructions and warnings in this quick start guide.

- (01). Do not use wet canned or moist food.
- (02). For dry food use only.
- (03). Do not attempt repairs on the device yourself.
- (04). Do not place any foreign object in the dog camera.
- (05). Do not use outdoors, for indoor household use only.
- (06). Please ensure the dog camera is placed in a safe place where will not fall on people or pets.
- (07). Please do not shoot at eyes.
- (08). Please keep the dog camera away from fire, water and any corrosive chemical stuffs.
- (09). Regularly clean the grain outlet to ensure the normal function of grain output.
- (10). Do not scratch the camera with sharp objects.
- (11). We recommend that you place the product in ventilated or dry place.
- (12). This device is packaged with a plastic bag, there is a risk of suffocation in the plastic bag, do not allow children and pets to touch the plastic bag.

Please Read and save these instructions

02. IN THE BOX

- Dog Camera ×1
- Power Adapter ×1
- USB Cable ×1
- Quick Start Guide ×1
- Reset Pin ×1

03. INTRODUCTION



04. LED INDICATOR

Constant on : No Wi-Fi connection
Flash for 10s : Reset Successful
Flash for 2 times : Scan Code Successful

Constant on : Live stream interface
Quick flash 4 times : Binding Successful
Blinking continuously : Feeding

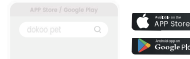
Constant on : No treats

05. GETTING STARTED

1. Plug in dog camera, make sure the device is within 10 meters of the router and mobile phone.



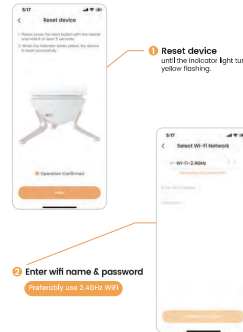
2. Download the dokoo Pet app, register an account and sign in.



3. Reset dog camera, wait till the yellow light flash for 10s.



06. ADD DEVICE



1. Reset device until the indicator light turns yellow flashing.

2. Enter wifi name & password
- Preferably use 2.4GHz WIFI



3 Scan the QR code on your phone

- Please scan the QR code on your phone from 5.9"-7.87" away.
- Hearing the "ding dong" sound means scan code successfully.



5 Device added successfully

Wait for the page to automatically jump to the next page.



7 Generates desktop icons

Click this icon to enter the device operation interface.

SUPPORTED FOODS

- Full shape
- Dry
- Food size between 0.2 inch - 0.7 inch



UNSUPPORTED FOODS

- Moist food
- Irregular shape food
- Food size < 0.2 inch
- Food size > 0.7 inch



07. MEASURE FOOD SIZE



0.2inch - 0.7inch

Put one kibble in

08. USING TIPS

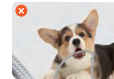
The following actions are prohibited:



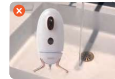
1 Eyes facing the feeding port within 1.5m



2 Touch the dog camera at work



3 Dog bites power cord



4 Washing equipment

Usage notice:

Wipe the device with a semi-dry rag

09. FAQ

Problems	Solutions
How to get your dog used to a feeder?	a. Grab a handful of dog treats and let the dog smell it.
	b. Put treats in the feeder in front of the dog.
	c. Operate the app to pop up snacks, repeat the operation twice, your pet will gradually become familiar with the feeder.
Device stops working?	a. Check whether the home power supply is normal.
	b. Check whether the power cord is damaged if it is damaged, please stop using it.
	c. Check if the device is functioning properly.
	d. Check if the app is connected to the device.

10. CERTIFICATIONS

FCC Statement:

This device complies with part 15 of the FCC rules. Operation is subject to the following two conditions

- (1) This device may not cause harmful interference.
- (2) This device must accept any interference received including interference that may cause undesired operation.

This equipment has been tested and found to comply with the limits for a Class B digital device, pursuant to Part 15 of the FCC Rules. These limits are designed to provide reasonable protection against harmful interference in a residential installation.

This equipment generates uses and can radiate radio frequency energy and, if not installed and used in accordance with the instructions, may cause harmful interference to radiocommunications. However, there is no guarantee interference will not occur in a particular installation.

If this equipment does cause harmful interference to radio or television reception, which can be determined by turning the equipment off and on, the user is encouraged to try to correct the interference by one or more of the following measures:

- Reorient or relocate the receiving antenna.
- Increase the separation between the equipment and receiver.
- Connect the equipment into an outlet on a circuit different from that to which the receiver is connected.
- Consult the dealer or an experienced radio/TV technician for help.

Changes or modifications not expressly approved by the party responsible for compliance could void the user's authority to operate the equipment.

Equipment complies with FCC radiation exposure limits set forth for an uncontrolled environment. This equipment should be installed and operated with minimum distance 20cm between the radiator & your body.

Manufacturer:

Shenzhen Zhimu Technology Co., Ltd, hereby declares that this Dog Camera, T2 is in compliance with the essential requirements and other relevant provisions of Directive 1999/5/EC.

Environmental Conditions:

Use the Dog Camera-T2 in the environment with the temperature between -20°C and 50°C (14°F-122°F).

Devices with Headphones or Earpieces:

Use careful with the earphone maybe possible excessive sound pressure from earphones and headphones can cause hearing loss.

Device with Adapter:

The plug considered as disconnect device of adapter.
Input: AC 100-240V 50/60Hz 0.4A
Output: DC 5.0V, 2.0A

Contact Us:

Web: www.dokoo.net
Email: support@dokoo.net