



# WLT8016M 天线规格书

最新版本 V1.4

维霖通(上海)通信技术有限公司

COPYRIGHT © 2011 - 2023

# 1.概述

本天线规格书中描述了WLT8016M模块板载天线的射频性能，确保当连接到50欧姆源时，在2.4 GHz ISM频段上的VSWR小于3，天线不同方向的增益图，不同频段的天线效率和增益值。

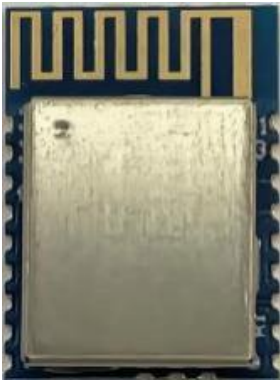
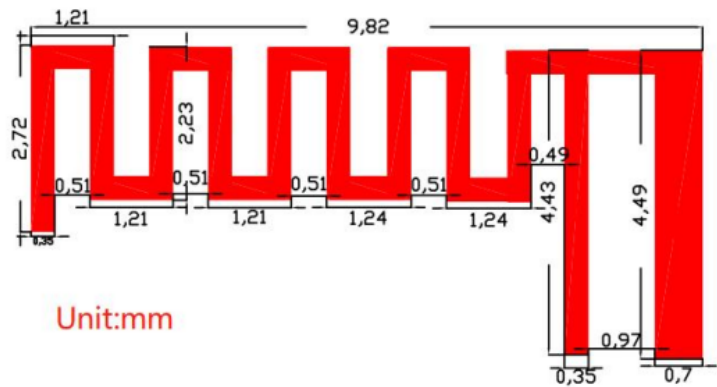


图1- 1：WLT8016M模块



WLT8016M模块天线尺寸

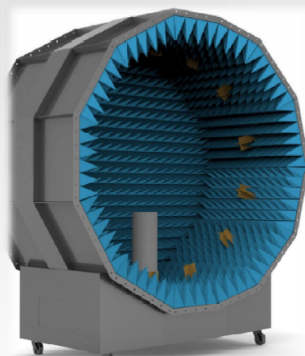
Design Specifications	Typical	Units
Antenna type	PCB antenna	
working Frequency	2400-2500	MHZ
Gain（max）	-0.06	DBi
Antenna efficiency	30~50	%
VSWR	<1.8	
Radiation pattern	omnidirectional	
impedance	50	ohm
Overall dimensions	9.8*4.49	mm
Weight	No requirement	
Operatin Temp	-40-85	℃
Storing Temp	-40-85	℃

WLT8016M天线信息

## 2.测试设备

### 测试设备 / Equipment

auden<sup>o</sup>



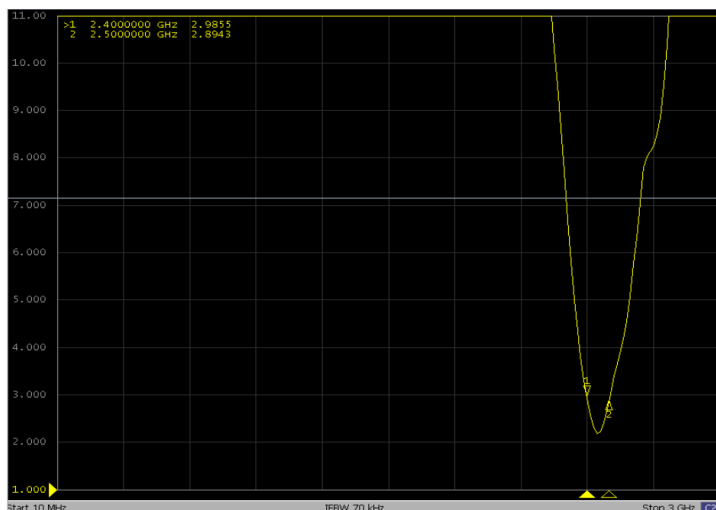
- Chamber : GTS Rayzone1800
- 网络分析仪 : Agilent E5071C
- 2G/3G综测仪 : Agilent 8960
- LTE综测仪 : Anritsu MT8820
- TD综测仪 : StarPoint SP6010
- WIFI综测仪 : Anritsu MT8860
- GPS信号源 : Agilent E4438C



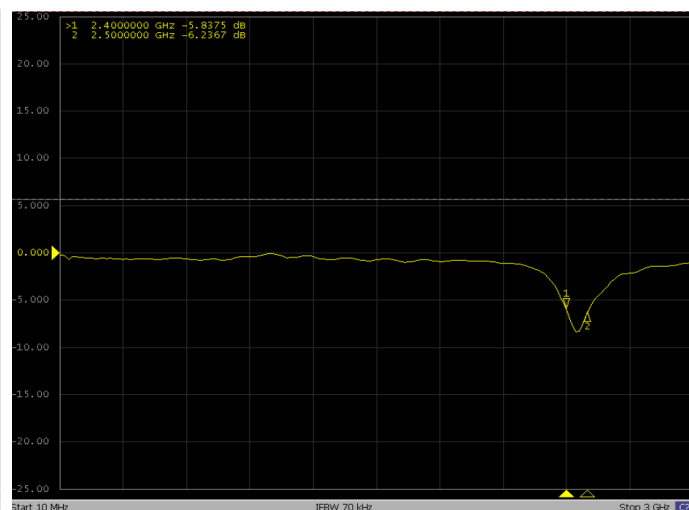
VS

2 Company Confidential, Auden  
Many aspects of this presentation are protected by US, TW, CN and international patents and patent applications

## 3.Return loss、VSWR



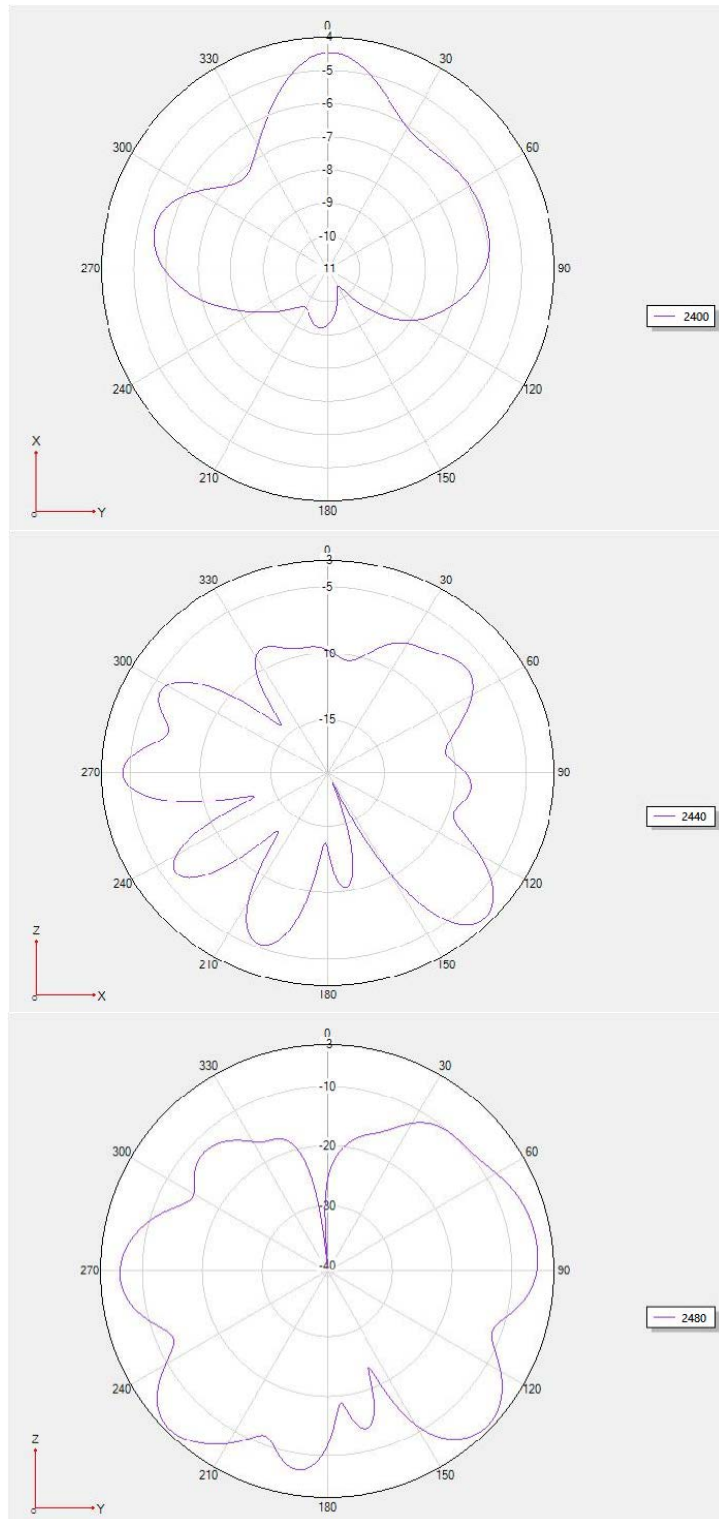
VSWR



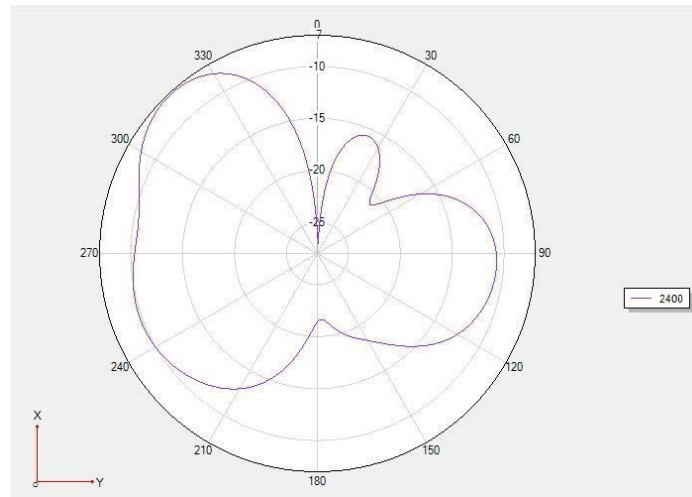
Return loss

## 4. 方向和增益图

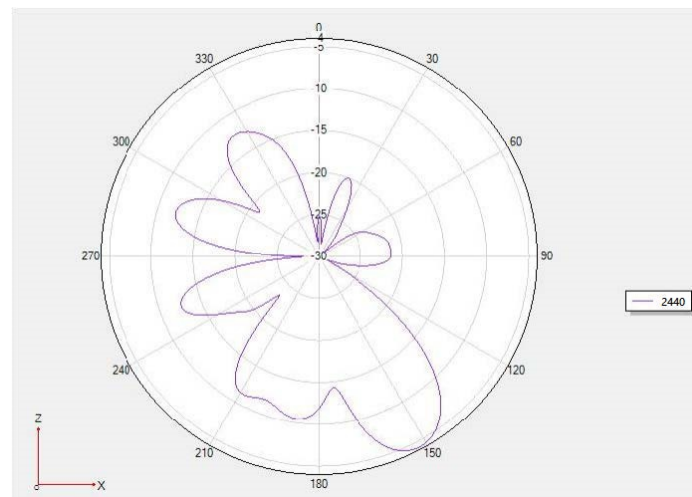
Etheta[Unit:dBi]



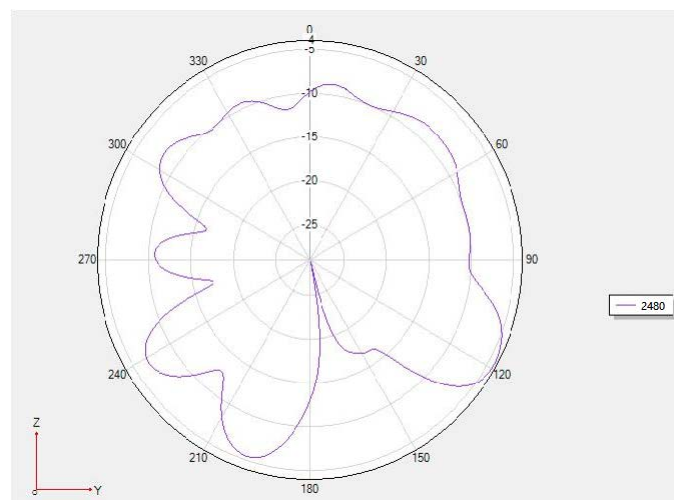
Ephi[Unit:dBi]



增益: -1.90dBi



增益: -0.72dBi



增益: -0.06dBi

## 5. 天线增益表

Frequency / MHz	Efficiency / %	Gain/ dBi
2400	22.29	-1.90
2410	24.61	-1.52
2420	26.72	-1.15
2430	28.62	-0.77
2440	27.97	-0.72
2450	30.65	-0.17
2460	30.04	-0.16
2470	28.77	-0.17
2480	28.70	-0.06
2490	26.38	-0.34
2500	25.77	-0.40