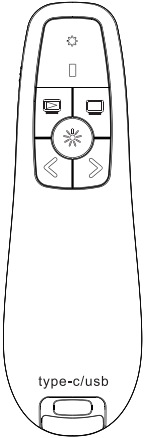
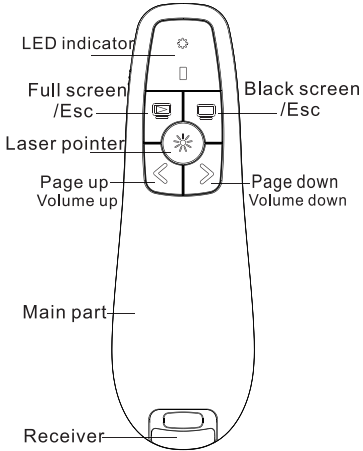


wireless laser presenter
Instruction

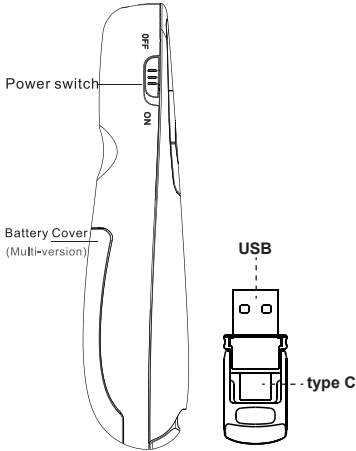


Please read the product instruction manual carefully before use , and save it for future use .

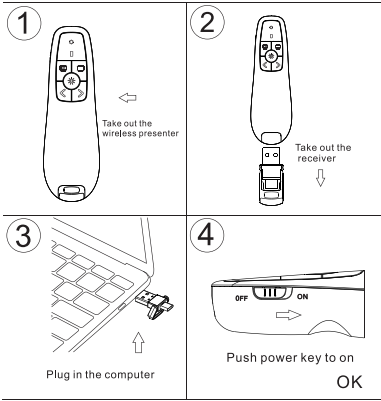
Function map



Function map



Operation



Main Features

Open Microsoft Powerpoint or Keynote files.
Page turning should be performed in full screen mode.

| | |
|--|--------------------------------------------------------------------------------|
| | Click the button / Full screen, Click the button again / Exit Full screen |
| | Click the button / Black screen, Click the button again / Exit black screen |
| | Click the button /Page up,Press and hold / Volume up |
| | Click the button / Page down, Press and hold / Volume down |
| | Press Laser pointer button to turn on the laser pointer |

- 1. Laser Class 2 safety level
- 2. 50-Meter control distance
- 3. No software to install
- 4. Precision molded usb A/C receiver.
- 5. High compatibility
- 6. Supported OS: Windows /Mac OS Android / Linux

This device complies with part 15 of the FCC Rules. Operation is subject to the following two conditions: (1) this device may not cause harmful interference, and (2) this device must accept any interference received, including interference that may cause undesired operation.

Any changes or modifications not expressly approved by the party responsible for compliance could void the user's authority to operate the equipment.

NOTE: This equipment has been tested and found to comply with the limits for a Class B digital device, pursuant to Part 15 of the FCC Rules. These limits are designed to provide reasonable protection against harmful interference in a residential installation. This equipment generates, uses and can radiate radio frequency energy and, if not installed and used in accordance with the instructions, may cause harmful interference to radio communications. However, there is no guarantee that interference will not occur in a particular installation.

If this equipment does cause harmful interference to radio or television reception, which can be determined by turning the equipment off and on, the user is encouraged to try to correct the interference by one or more of the following measures:
-- Reorient or relocate the receiving antenna.
-- Increase the separation between the equipment and receiver.

-- Connect the equipment into an outlet on a circuit different from that to which the receiver is connected.
-- Consult the dealer or an experienced radio/TV technician for help.

The device has been evaluated to meet general RF exposure requirement. The device can be used in portable exposure condition without restriction

Product Specifications
Wireless Presenter

Safety level : Laser Class 2
Laser rating: less than 1mw
Laser wave : 650nm
Laser color: red

Power : 2pcs AAA
Connection : 2.4G wireless

Control distance : over 50 meters
Laser distance : over 200 meters

Color : Black
Size : 116*37*28mm
Material: ABS
Weight : 31grams

Receiver: USB-A + USB-C
Size : 52*16.5*8mm

Supported OS : Windows Mac os
Linux Android



- 1. keep the presenter away from children
- 2. Do not point the presenter at people, especially their face.
- 3. Do not look directly into laser beam.
- 4. Do not view the presenter's laser beam with telescopic devices, such as microscope or binoculars.
- 5. Do not put the presenter in the water.
- 6. The seller may improvements or changes in the product described in this document at any time.

LED indicates the status

Laser on:laser on LED red light on,laser off LED red light is off at the same time.

Turning page work:turning page work button press LED blue light is on,LED blue light is off when the button is released.

Charging status:LED red light is always on when charging,after full LED red light is off.(Lithium battery charging style only)

Low battery reminder:work button pressed if the LED red LED blinks slowly 4-5 times when the work button is pressed,indicating that the power is low and needs to be charged in time.(Lithium battery charging style only)

Transmit and receive a successful connection reminder:

When the transmitter body and receiver is not connected successfull,tap page function key blue light flashes 2 times to remind timely connection match . when the transmitter and receiver are connected successfully,tap the page function key blue light normal blinking once to indicate that it can work normally.

Warranty Card

Customer Name: _____
Contact Number: _____
Contact Address: _____
Product Model: _____
Problem Description: _____

Warranty Description

Thank you for purchasing the equipment, in order to ensure that the legitimate rights and interests of you ,Please be informed that to read the following items.

- 1. Throught legal,formal channels for our company parts.
- 2. The non -artirical damage parts, Besides natural disasters and other circumstances It's in the guranteee period.
- 3. Please be sure to provide this card together with the part to our company after-sales when the part need maintenance.
- 4. The company reserves the final interpretation.

Model:HMP012
Zaidtek Electronic Technology (Xiamen) Co.,Ltd.
Address: No.29,XinLe Road,Haicang District, Xiamen,Fujian,China,Zip Code361028