

**MOTO**  
**REMOTE CONTROL**  
**WRC30M-MS**

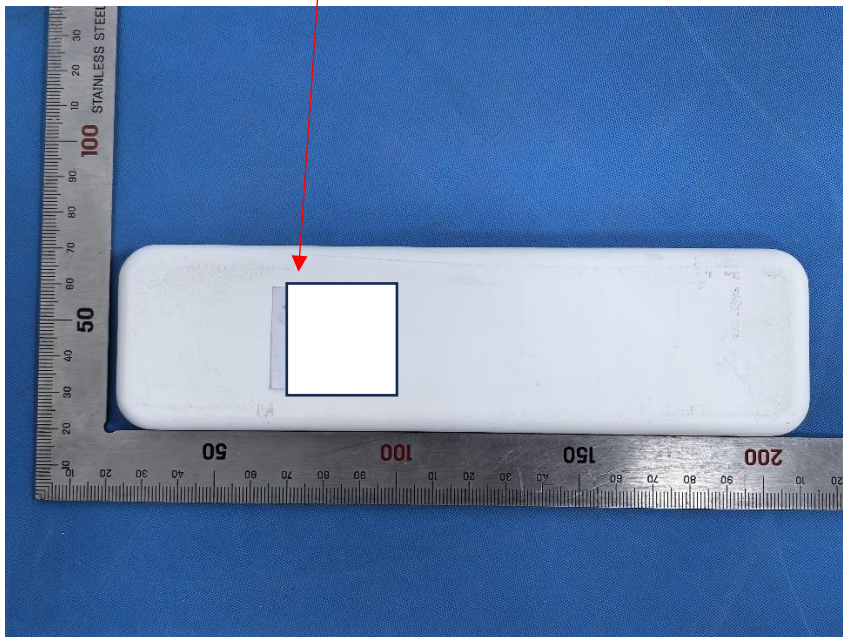
---

**Battery 3.7V-3.85V Class 2**

**WRC30**

**FCC ID:2BA76WRC30MNT017**

**S/N: L06-24708740155**



Remark: It's hard to put FCC statement on the product due to device's irregular appearance.  
FCC statement will be placed in the user manual which the device is marketed.